



PUMP COMPANY

Zoeller Family of Water Solutions™

915 SHARK SERIES

*GRINDER SYSTEMS ENGINEERED FOR
RESIDENTIAL AND LIGHT
COMMERCIAL APPLICATIONS*

“THERE’S A NEW BREED STRIKING FEAR IN THE WATER...”

915 Shark Grinder System

Zoeller Pump Company proudly introduces the prepackaged *915 Shark Grinder System*. This unit will revolutionize the sewage pump industry as we know it. Original 'grinder pumps' that have been on the market were engineered for pressure sewer systems but have traditionally been associated with a high price tag and a large physical size. The *915 Shark Series* is designed to compete with a standard sewage ejector! Sewage ejectors associate themselves with the need to pass a 2" spherical solid. By introducing a small compact *yet powerful* grinder pump, the 915 Series significantly eliminates the worries associated with a clogged pump and damage that it may cause to a basement or other lower levels.

The 915 Shark Series is designed for use in new construction, retro-fits and replacements. The package is supplied fully assembled and includes a high water alarm along with a 1 1/4" silent check valve that eliminates water hammer in the line. If it were any more preassembled, the contractor would expect Zoeller to dig the hole as well!



Zoeller Family of Water Solutions

915 Shark Grinder System

- Retro-Fits to **MOST** simplex 18"x30" or 24"X24" ejector basins. (
- Completely preassembled including silent check valve for the discharge (eliminating water hammer issues)
- Energy Efficient – Annual operating cost (approx. \$8.00) is less than $\frac{1}{4}$ of the estimated cost of a traditional 2HP grinder pump
- Engineered to grind gym socks, jeans, rubber gloves, latex products, sanitary napkins, baby wipes and disposable/cloth diapers
- Priced to compete with sewage ejectors with the capability of competing with the features of a larger 2HP grinder pump

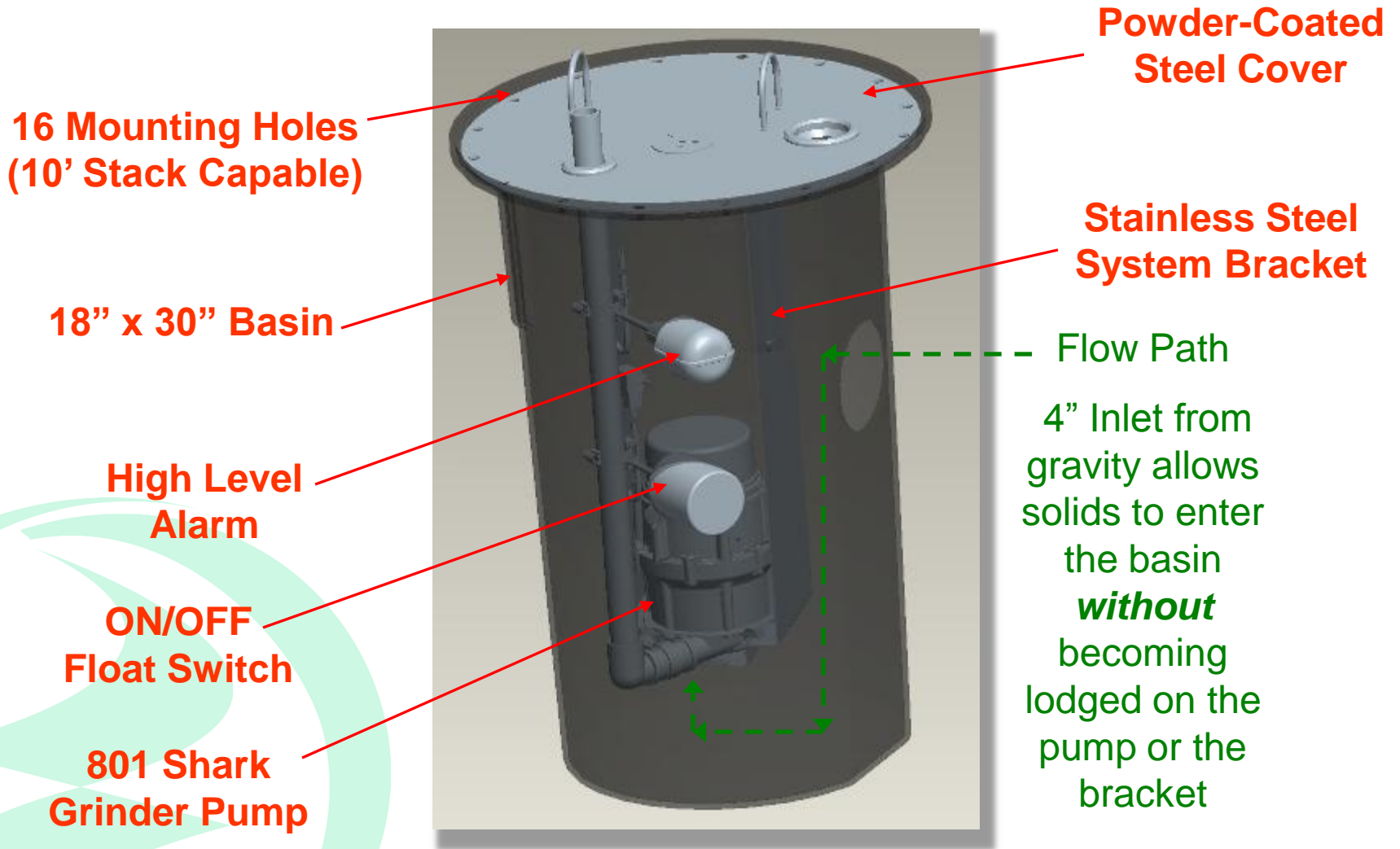


915 Shark Pump Specifications

The model 801 grinder pump included in the *915 Shark Grinder System* is not sold as a separate model and is currently only available as a package system. It has a ½ HP 3450 RPM motor. Measuring an energy efficient 7.0FLA (attributed to the dependable PSC motor), the pump is VERY inexpensive to operate. The cast iron motor shell allows for excellent heat dissipation adding years to the life expectancy of the system.

P/N	Pump	Description
915-0005	801	18" x 30" PSF basin, powder-coated steel cover with 2V1.25D, mechanical float switch, 10-1494 alarm UPC Code 053514309596 WGT: 60 lbs.
915-0006	801	24" x 24" roto molded basin, powder-coated steel cover with 2V1.25D, mechanical float switch, 10-1494 alarm UPC Code 053514312176 WGT: 65 lbs.
915-0007	801	18" x 30" fiberglass basin, powder-coated steel cover with 2V1.25D, mechanical float switch, 10-1494 alarm UPC Code 053514312183 WGT: 60 lbs.

915 Shark System Design Features



915 Shark System Design Features

Through the
cover discharge

U-Bolts mount
the system to
the lid AND
provide a
convenient
lifting means

Mechanical
Float

Pump suspended
from Lid

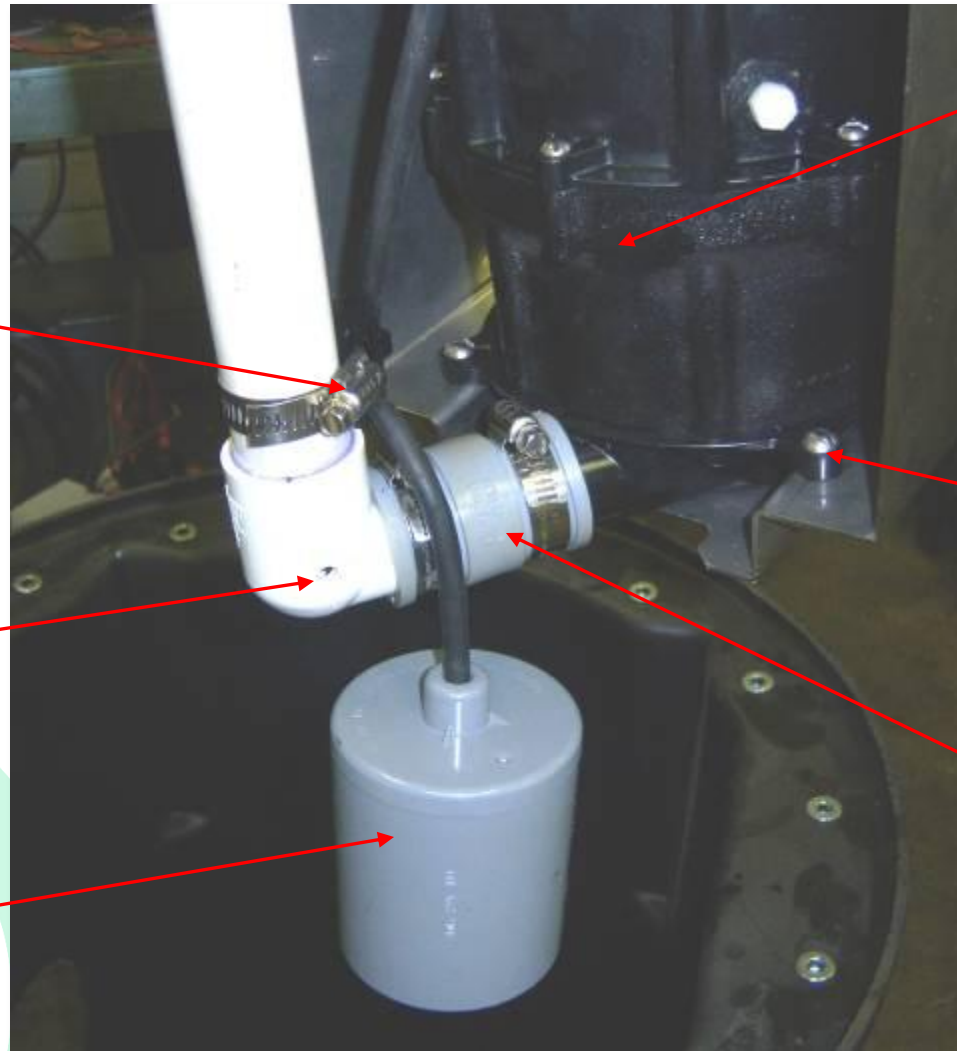


915 Shark System Design Features

Mechanical float secured to discharge pipe

Elbow with scouring system

Mechanical Float

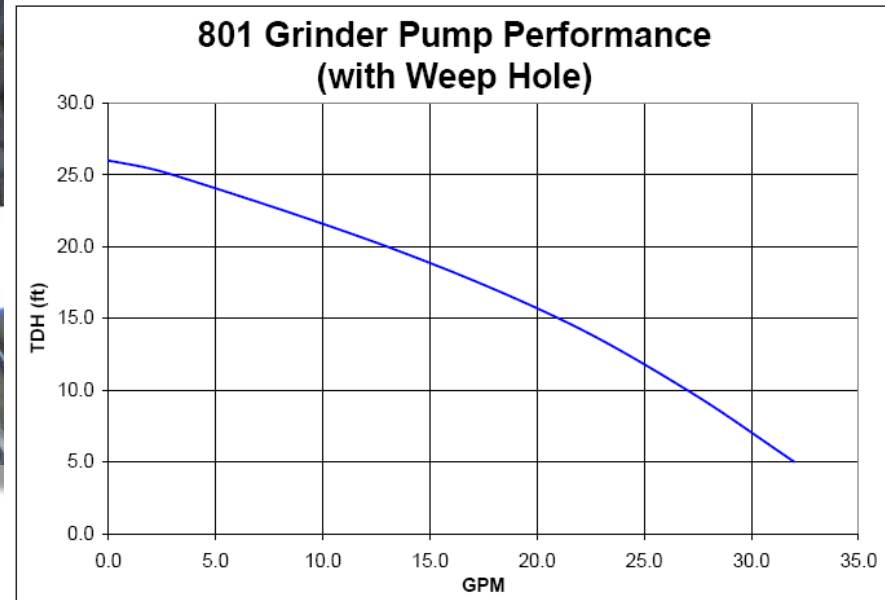
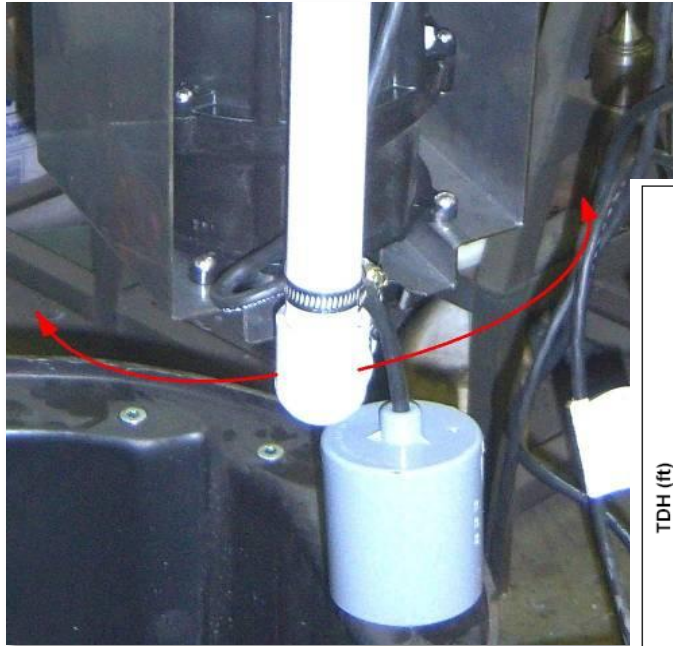


801 Shark Grinder Pump

Pump bolted to mounting bracket for easy removal

Rubber coupling for easy pump removal

801 Pump Performance



The scouring system adds a level of dependability that will ensure that the pump does not become air locked **OR** the float does not become bound on foreign objects that may build-up or enter the pit. The scouring system also helps to scour the walls of the pit assembly helping to eliminate the need to open the cover for maintenance.

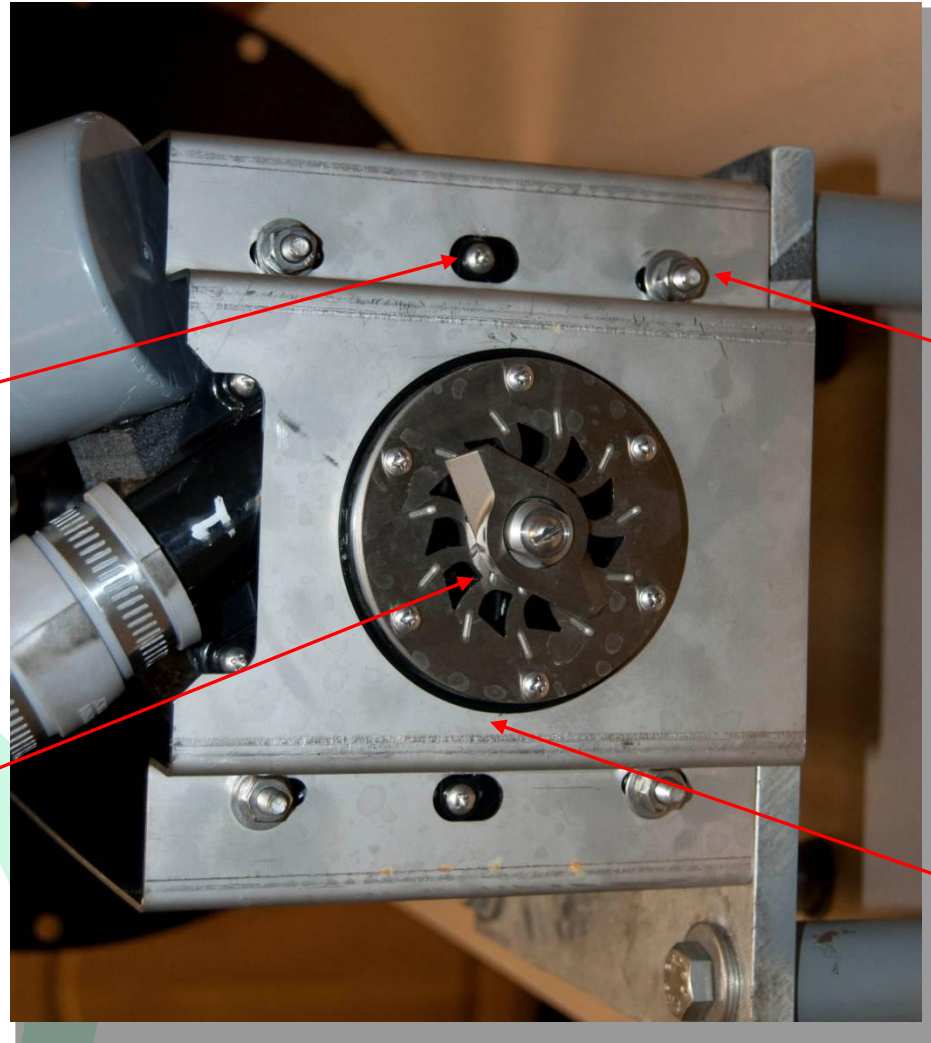
915 Shark System Design Features

**Clearance
Hole**

**Mounting
Bolts (4)**

**Tri-Slice
Cutter
System**

**Clearance
Hole for
Pump Inlet**



Additional Questions?

For any additional questions, please contact the Zoeller Pump Company.

Zoeller Pump Company

3649 Cane Run Road
Louisville, KY 40211

1(800)928-7867

(502)778-2731 - PHONE

(502)774-3624 – FAX

www.zoellerpumps.com



Zoeller Family of Water Solutions