

- ### Concrete Wall Systems
- Block
  - Insulating Concrete Forms (ICFs)
  - Removable Forms (RFs)
  - Precast Panels
- BUILDING WORKS, INC.



## Block Selection Factors

- In high-wind area
- In high block-use area (like FL)
  - Crews and equipment
  - Local officials familiar



BUILDING WORKS, INC.



## ICF Selection Factors

- In high-wind area
- Custom Home
  - Properties buyers want
  - Flexibility



BUILDING WORKS, INC.



## Removable Forms Selection Factors

- In high-wind area
- Development
  - Low cost
  - Benefits of concrete



BUILDING WORKS, INC.



## Precast Panels Selection Factors

- In high-wind area
- Near precast plant
  - Close costs
- Development
  - Even closer costs
- Site speed important



BUILDING WORKS, INC.



## Finding Crews

- Walls
- Electrical
- HVAC

BUILDING WORKS, INC.



## Wall Crews

- Block
- ICFs
- RFs
- Precast

BUILDING WORKS, INC.



## Wall Crews

- Block
  - Plentiful in FL
  - Recruit local basement or commercial crew
- ICFs
- RFs
- Precast



BUILDING WORKS, INC.



## Wall Crews

- Block
- ICFs
  - Directory of ICFA: [www.forms.org](http://www.forms.org)
- RFs
- Precast



BUILDING WORKS, INC.



## Wall Crews

- Block
- ICFs
- RFs
  - Structura service: [www.structuratech.com](http://www.structuratech.com)
- Precast



BUILDING WORKS, INC.



## Wall Crews

- Block
- ICFs
- RFs
- Precast
  - Find a plant
  - [www.pci.org](http://www.pci.org) or [www.ncpa.org](http://www.ncpa.org)



BUILDING WORKS, INC.



## Electrical Crews

- Interior insulation (pulling or cutting)
- Other insulation (conduit)



BUILDING WORKS, INC.



## HVAC Contractor

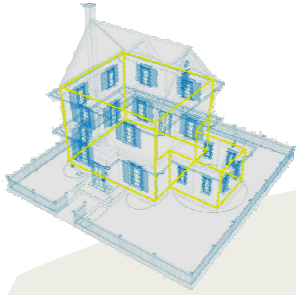
- Need accurate sizing
- Ask HERS rater ([www.natresnet.org](http://www.natresnet.org))



BUILDING WORKS, INC.



## The Concrete House



BUILDING WORKS, INC.



**BUILDING WORKS, INC.**  
EXPERTS IN THE BUSINESS  
OF CONSTRUCTION PRODUCTS

## Concrete Homes 101

Pieter VanderWerf  
Building Works, Inc.  
[pvander@buildingworks.com](mailto:pvander@buildingworks.com)  
[www.buildingworks.com](http://www.buildingworks.com)