



THERMAL COVERS & BLANKETS

"Customized
Thermal Insulated Solutions,
We Manufacture & Deliver"



MADE IN CHINA

Why Insul-Pack Pallet Covers?

- High quality Covers provide maximum strength and protection to ensure your goods arrive in tip top condition
- Validated thermal performance
- Easy to use and suitable for reuse again and again
- Space saving and cost effective
- We have blankets of 10+ different materials. Custom sizing available
- Made in China and manufactured under an ISO Quality, Safety and Environmental Management System

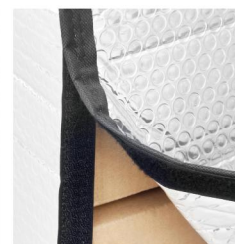


STANDARD PALLET SIZES

EU Pallet	1200mm*1000m 1200mm*800mm
US Pallet	1219mm*1016mm
JP, KR and Other Countries	1100mm*1100mm
We customize the size as per client's requirement	



Dual Locking System



Velcro / Tape Lock



Reuse System

APPLICATIONS



Perishable and Frozen Foods



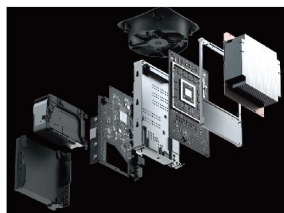
Beer/Drinks and Dry Ice



Industrial Chemicals and Paints



Medical products



High Tech and Electrical



Ice cream and dairy



Bakery



Catering/Vending



Freezer

Grades we Design & Manufacture

BP501

BP601

XPE501

XPE601

YF005-C

YF005-D

RB501

RB601

EPE01

FP001

RACK COVER

TROLLEY COVER

PE01

PE02

INSUL-CTN 3 Container Liner



Alu Bubble Features: 96% reflectivity provides optimum warmth. Free from moisture and control condensation. Gloss barrier moisture protection. Single bubble provides effective insulation and break resistance.

BP501

SPERCIFICATIONS

Parameter	97% Reflectivity, 3% Emissivity
Material	5 Sides Pure Alu+Bubble Clear or Black +(Pure Alu)
Insulation	Insulation Similar to 45 MM Standard EPS
Weight	132 or 230 g/m ²
Thickness	4 MM

APPLICATIONS

Safety Temperature Range **2-8°C** or **15-25°C**

Reusable & Affordable

Less Than **50%** Product Mass



BP601

SPERCIFICATIONS

Parameter	97% Reflectivity, 3% Emissivity
Material	6 Sides Pure Alu+Bubble Clear or Black +(Pure Alu)
Weight	132 or 230 g/m ²
Thickness	4 MM

APPLICATIONS

Safety Temperature Range **2-8°C** or **15-25°C**

Reusable & Affordable

Less Than **50%** Product Mass

90% Moisture-proof



Alu XPE Properties: One layer closed-cell foam bonded between two layers of highly reflective metalized aluminum polyester film. Industrialized strength, lightweight yet durable insulation designed to hold staples without tearing. Does not compress, collapse or disintegrate. Reflects 97% of radiant heat, emits less than 3% of heat.

XPE501



SPECIFICATIONS

Parameter	97% Reflectivity, 3% Emissivity
Material	5 Sides Pure Alu+Black XPE Foam+Pure Alu
Insulation	More Durable than BP601
Thickness	5 MM
Weight	265 g/m ²

APPLICATIONS

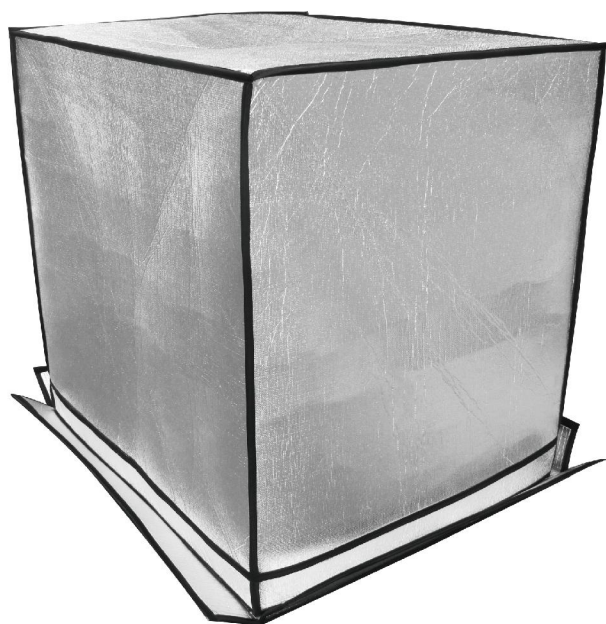
Safety Temperature Range **2-8°C** or **15-25°C**

Reusable & Affordable

Less Than **50%** Product Mass

A1 Fireproof

XPE601



SPECIFICATIONS

Parameter	97% Reflectivity, 3% Emissivity
Material	Material: 6 Sides Pure Alu+Black XPE Foam+Pure Alu
Insulation	More Durable than BP601
Thickness	5 MM
Weight	265 g/m ²

APPLICATIONS

Safety Temperature Range **2-8°C** or **15-25°C**

Reusable & Affordable

Less Than **50%** Product Mass

90% Moisture-proof

A1 Fireproof



Material Features: Woven foil is the solution for applications requiring rough handling, puncture and tear resistance. Available both single-sided and double-sided with aluminium foil and/or aluminium film. Matt-Foil is a truly adaptable solution with self-supporting properties due to its high tensile strength.

YF005-C

SPERCIFICATIONS

Parameter	97% Reflectivity, 2.5% Emissivity
Material	6 Sides Reflective YF005-C Woven
Thickness	0.5 MM
Weight	155 g/m ²

APPLICATIONS

Safety Temperature Range **2-20°C** or **15-30°C**

Reusable & Portable

Less Than **50%** Product Mass



YF005-D

SPERCIFICATIONS

Parameter	97% Reflectivity, 2.5% Emissivity
Material	6 Sides Reflective YF005-D Woven
Thickness	0.5 MM
Weight	155 g/m ²

APPLICATIONS

Safety Temperature Range **2-20°C** or **15-30°C**

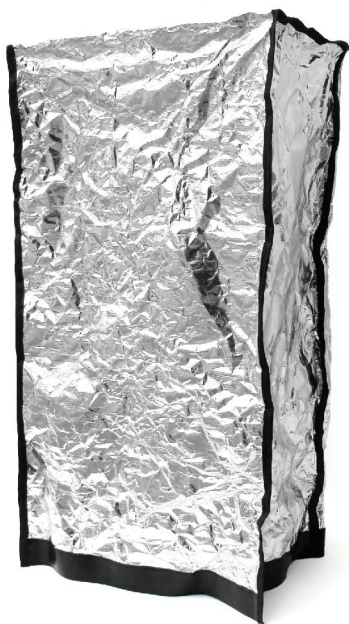
Reusable & Portable

Less Than **50%** Product Mass



Radiant Barrier Properties: Radiant barriers consist of a highly reflective material, radiant barrier is fiber-reinforced to increase durability and ease of handling. The thickness is double-sided approximately 6.5 mils in thickness (6.5 thousandths of an inch / .0065 inches), reflects (blocks) 97% of the radiant heat

RB501



SPERCIFICATIONS

Parameter	97% Reflectivity, 3% Emissivity
Material	5 Sides Alu+Woven+Alu
Thickness	135 µm
Weight	140 g/m ²

APPLICATIONS

Safety Temperature Range 2-8°C or 15-25°C
Reusable & Portable
Less Than 50% Product Mass
50% Moisture-proof

RB601



SPERCIFICATIONS

Parameter	97% Reflectivity, 3% Emissivity
Material	6 Sides Alu+Woven+Alu
Thickness	135 µm
Weight	140 g/m ²

APPLICATIONS

Safety Temperature Range 2-8°C or 15-25°C
Reusable & Portable
Less Than 50% Product Mass
100% Moisture-proof



EPE01

Alu EPE Features: Material Properties: One layer of closed-cell foam bonded between the two layers (1 layer of highly reflective metallized aluminum mylar and 1 layer of durable textured white vinyl surface). Industrial strength, lightweight and durable insulation designed to hold staples without tearing. Won't compress, fold or break. Reflects 97% of radiant heat and emits less than 3% of heat.

SPERCIFICATIONS

Parameter	97% Reflectivity, 3% Emissivity
Material	Alu+EPE Foam+Alu
Thickness	3-8 MM
Weight	140 g/m ²

APPLICATIONS

Safety Temperature Range -2-5°C or 15-25°C
Reusable & Portable
Less Than 30% Product Mass
100% Moisture-proof



FP001

Features: Thick and dense foam padding and high-quality pure aluminum film surface; fully enclosed with a magical adhesive closure, allowing for repeated use; providing 100% moisture and UV protection, ensuring temperature maintenance for pharmaceutical transportation for over 72 hours.

SPERCIFICATIONS

Parameter	97% Reflectivity, 3% Emissivity
Material	6 Sides Reflective Alu Foil Flat
Thickness	15 MM
Weight	400 g/m ²

APPLICATIONS

Safety Temperature Range <-1°C
Most Preferable in Pharmaceutical Industry
100% Moisture-proof



Alu Bubble Features: 96% reflectivity provides optimum warmth. Free from moisture and control condensation. Gloss barrier moisture protection. Single bubble provides effective insulation and break resistance.

RACK COVER



SPERCIFICATIONS

Parameter	97% Reflectivity, 3% Emissivity
Material	5 Sides Pure Alu+Bubble Clear or Black +(Pure Alu)
Insulation	Insulation Similar to 45 MM Standard EPS
Weight	132 or 230 g/m ²
Thickness	4 MM

APPLICATIONS

Safety Temperature Range **2-8°C** or **15-25°C**

Reusable & Affordable

Less Than **50%** Product Mass

TROLLEY COVER



SPERCIFICATIONS

Parameter	97% Reflectivity, 3% Emissivity
Material	5 Sides Pure Alu+Bubble Clear or Black +(Pure Alu)
Insulation	Insulation Similar to 45 MM Standard EPS
Weight	132 or 230 g/m ²
Thickness	4 MM

APPLICATIONS

Safety Temperature Range **2-8°C** or **15-25°C**

Reusable & Affordable

Less Than **50%** Product Mass

PE Features: This PE wrap can be used to shield rain, dustproof, packed, this is made of high quality PE material, flexibility and eco-friendly.

PE01

SPERCIFICATIONS

Color	Clear
Material	PE Film
Thickness	0.02~0.15 MM
Height	120 CM, 150 CM, 200 CM, Customized

APPLICATIONS

Corrugated gaylords
Furniture
Bricks and blocks
Bags of aggregate
Sand
Other Irregularly shaped objects



PE02

SPERCIFICATIONS

Color	Black
Material	PE Film
Thickness	0.02~0.15 MM
Height	120 CM, 150 CM, 200 CM, Customized

APPLICATIONS

Corrugated gaylords
Furniture
Bricks and blocks
Bags of aggregate
Sand
Other Irregularly shaped objects



Heat insulation: To eliminate rapid changes in temperature within a short period of time affect the quality of the product, the temperature difference between the inside and outside of the container bag can be up to 8-15 °C.

INSUL-CTN 3 Container Liner

SPERCIFICATIONS

Size	INSULPACK 20GP 40GP 40HQ 45HQ
Weight	20GP 14±5 Kg/pc; 40HQ 25± 5kg /pc; 45HQ 27± 5kg /pc
Material	5-layer Material Structure, Alu Foil + PE + Woven + PE + Alu Foil (135gsm)
Features	Sealed seams, Hook and loop fastener closure, Vapour-tight
After Sale Service	Online consultation, free parts support

APPLICATIONS

Container Shipping, Stack Overpack, Pallet Cover, Container House

2 workers can install it in 15-20 minutes

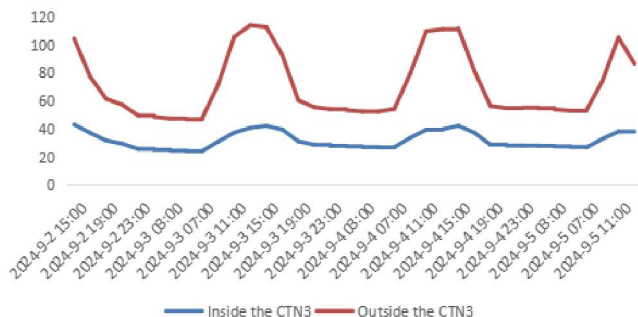
Test conditions:

Duration: 48 hours, test container placed outdoors in direct sunlight, temperature 34.8°C

INSUL CTN 3 Container Liner	Min Temp °C	Max Temp °C	Difference in Temp °C
Inside	24.22	42.33	18.11
Outside	23.46	71.35	47.89



48H Temperature Fluctuations



The Temperature Difference Between The Inside And Outside Of The Container Liner Bag Can Be Up To 10-20 °C.

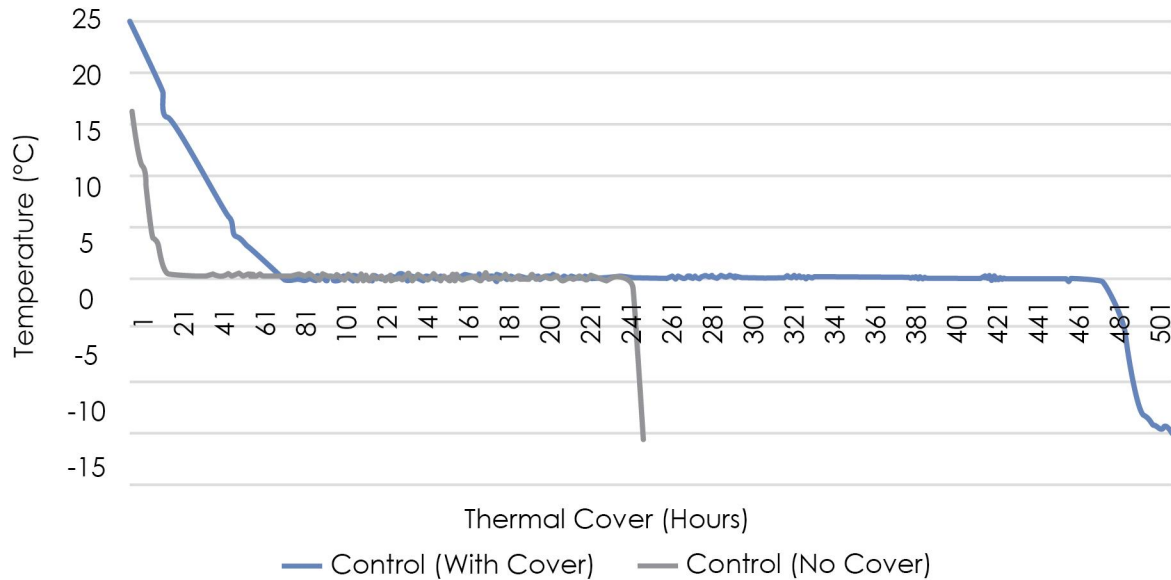
Test Items (standard)	Parameter	Unit
Tensile Strength	Vertical 650 Horizontal 520	N/50mm
Water Vapour Permeability (ASTM E96)	<0.02	g/(m².h)
Bursting Strength (ISO 2759:2014)	1366	kPa
Reflectivity	96%	
REACH (1907/2006)	PASS: 241 SVHC ≤0.1	



Performance

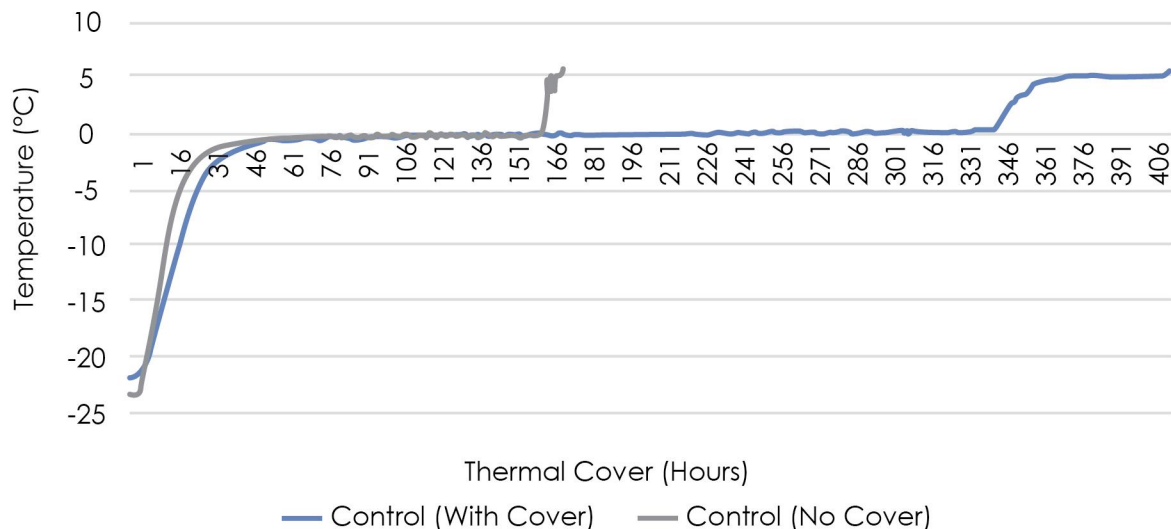
Our in-house testing proves consistency in thermal performance of our Pallet Covers. Not only will ThermoWeave protect your goods with it's superior strength, it will also maintain desired temperature over a set period of time.

Freeze Time Comparative Data



* Pallets are placed in a container freezer set to -25°C. Test ended when product reached -15°C

Thaw Time Comparative Data



* Frozen 500lb Pallecon filled with water with Pallet Covers on them, removed from freezer and placed in warehouse

**48000m² DUST-FREE WORKSHOP & WAREHOUSE
in GUANGZHOU and YANGJIANG**



Landy Guangzhou



Landy Yangjiang



Dust-Free Workshop



45 HQ Warehouse

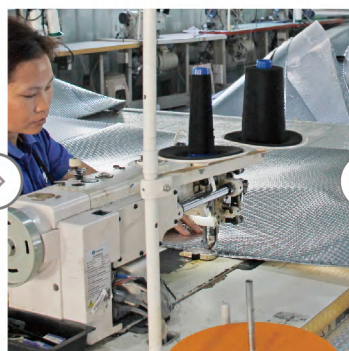
INTEGRATED PRODUCTION WITH IMPORTED MACHINES



Design



Insulation Material Production



Production



Shipping

Landy Factory Can Customize Any Shape And Size Cover for Your Needs



Air Conditioning Cover



Battery Thermal Cover



Thermal Insulation Cover For Drum



Car Cover



Attic Cover



Hot Tube Thermal Cover



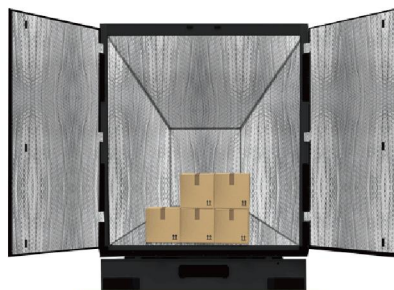
Bucket Cover



Roll Container Cover



Waterproof Machine Cover



Shipping Container Cover



Thermal Insulating Cover For Drum



INSUL-PACK

Tel: 400-803-3839

E-mail: landy@landy360.com

LANDY(Guangzhou):

No.215, Shinan Rd, Shipai Village,Dongchong Town, Nansha Dist,Guangzhou, Guangdong,China

LANDY(Yangjiang):

No.13, Area B, Yinling Technology Industrial Park, Jiangcheng Dist, Yangjiang, Guangdong, china