



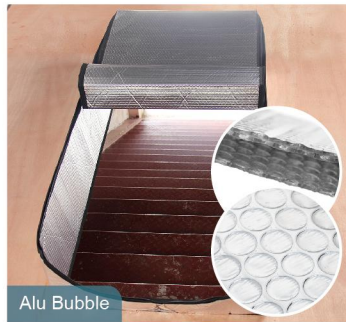
# Attic Cover Insulation

## Description

The Attic Cover by The Landy Insul-Pack is comprised of double bubble / XPE / EPE / Radiant Foil. This radiant foil is known to reflect away up to 96 -97% of radiant heat. When installed in an attic stairway opening. The Attic Cover will reflect heat away from the attic opening, while completely sealing the gaps along a traditional attic door.

## Features

Stop Dirty Attic Air From Entering the Home Through the Attic Door.  
Leaky Attic Doors Let Bugs, Dust, Heat and Allergens into the Home.



Alu Bubble



Alu XPE Foam



Alu EPE Foam



Alu Woven Foil

## Reference Size

Small	24" x 54" x 12"	Standard Scuttle Hole	24" x 42" x 06"
Standard (most popular)	26" x 54" x 12"	Small Hatch	20" x 20" x 15"
Large	30" x 54" x 15"	Medium Hatch	24" x 24" x 15"
Extra Large	30" x 60" x 15"	Large Hatch	22" x 30" x 15"
Small Tall	24" x 54" x 16"	Extra Large Hatch	30" x 30" x 15"
Standard Tall	26" x 54" x 16"	Extra Long Hatch	22" x 36" x 15"
Full Door	32" x 80" x 06"	XXL Hatch	34" x 34" x 15"
Large Full Door	36" x 82" x 06"		



## Attic Cover Kits Comes With

PE Bag, Installation Instruction,  
Manual Nailer & Nails(optional), Double-sided tape (optional)  
Unit Pack Weight: 950-1000g



## Performance

The Attic Stairway Insulator when installed properly is helps reduce energy loss from the attic opening. The Thermometer measurements shows. The Attic Cover's effectiveness.



Unsealed attic entrance



Seal with attic tent

## Testing

Pure Aluminum Thermal Conductivity (GB/T 10295-2008) 0.033 W/m-k  
Aluminum Foil Thermal Conductivity (GB/T 10295-2008) 0.028 W/m-k  
Pure Aluminum Double Bubble R Value(ASTM C518-15) 0.0925 m<sup>2</sup>/KW  
Foil Aluminum Double Bubble R Value(ASTM C518-21) 0.161 m<sup>2</sup>/KW  
XPE Foam Thermal Conductivity(ASTM C518-2010) 0.049 W/m-k  
XPE Foam R-Value 0.1337 m<sup>2</sup>/KW



Landy  
Attic Cover Patent  
(10290997)



# Attic cover installation guide

