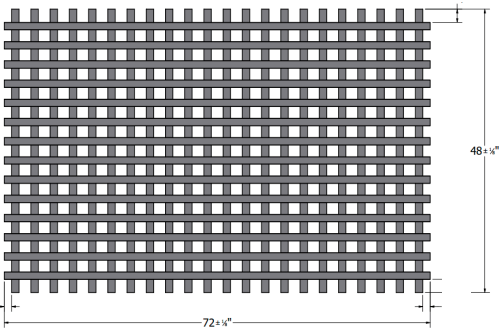
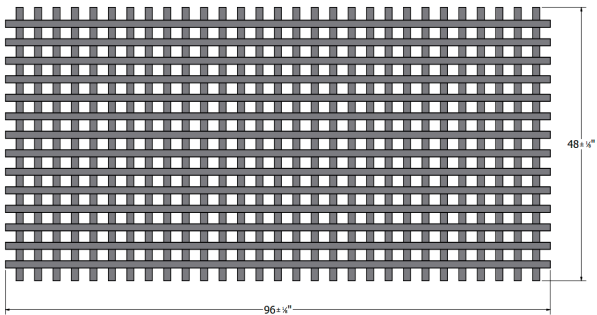


Hidden Weld Aluminum Lattice

Enhance your hardscape with Permalatt’s Hidden Weld Aluminum Lattice. Aluminum lattice will add beauty and elegance to your outdoor living area and is a great investment to your home or business.

Permalatt’s Hidden Weld Aluminum Lattice is robotically welded at every intersection providing a stronger bond to the lattice. The welds are hidden within the slats, offering a clean, finished look.

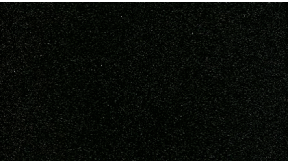
Available in 2” Square pattern in 4’ x 8’ and 4’ x 6’ sheets and eight powder coat colors.



4’ x 8’ Sheets and 4’ x 6’ Sheets Available

Aluminum Powder Coating Colors

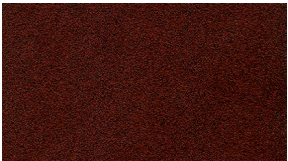
Textured Colors



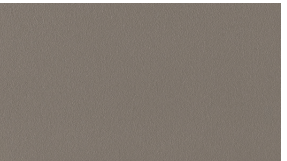
Black Fine Texture



Brown Fine Texture

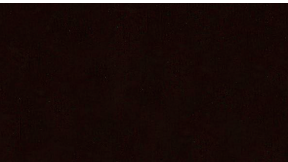


Bronze Fine Texture



Grey Fine Texture

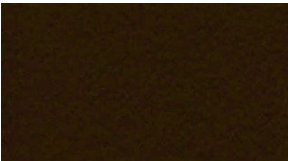
Satin Finish Colors



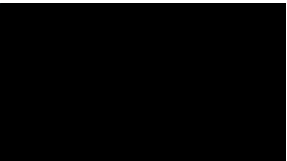
Chocolate



Gloss White



Ninety Bronze



Satin Black

Colors shown are a close representation of the true color. Please consult actual samples for accurate powder coating colors.



Permalatt Products, Inc.
Lifetime Limited Warranty
Aluminum Warranty

Permalatt Products, Inc. warrants to the purchaser that its Aluminum Products are free of defects in workmanship and materials and that, in the course of normal and proper use, its Powder Coated Aluminum Products will not crack, peel, blister, flake, rust, nor be subject to abnormal weathering per **AAMA 2603, 2604, or 2605** specifications (depending on powder coating used on product).

This warranty covers:

- Any defect in materials and workmanship.
- Powder Coating Fade and Color Retention per AAMA specifications.
- Saltwater and Corrosive Environments
 - For installations within 1500 feet of Saltwater, Salt Environments, or other Contaminants, the Lifetime Limited Warranty reverts to a 10-Year Limited Warranty for living entities and 5-Year Limited Warranty for non- living entities.

This warranty will be effective:

- For the lifetime of the owner of real estate upon which the material is installed. An online warranty registration must be completed on the Permalatt website (Permalatt.com). The original owner will have 30 days to complete this online registration for the warranty to be valid.

This warranty applies to:

- The purchasing owner. Proof of purchase must be provided. This is a Lifetime Limited Warranty.
- The Lifetime Limited Warranty applies only to living entities. Non-living entities shall include but are not limited to governments, municipalities, corporations, trusts, and commercial operations. All non-living entities shall receive a 25-year limited warranty from the date of purchase.

Warranty claim process:

- Submit a claim via the PERMALATT website within 30 days of discovering the claimed defect.
- If Permalatt Aluminum Products are found to be defective and covered by this warranty, Permalatt Products, Inc. will provide replacement of the defective products, or at the sole discretion of Permalatt Products, Inc., will provide financial compensation equal to the original purchase price of the defective product.
- Gloss Retention and Fade (Delta E) readings will be measured on a clean surface free of dirt, chalk, oxidized film or other contaminants per AAMA 2603, AAMA 2604, or AAMA 2605 depending on powder coating used on the product.

Limitations and conditions not covered:

- Damage caused by faulty installation or from improper applications. Installation instructions are available on the PERMALATT website (Permalatt.com).
- Damage attributable to fire, violent storms, earthquakes, or other Acts of God, accidents, vandalism, or other casualties, impact of objects or exposure to atmospheric pollutants or conditions other than natural weather processes.
- Damage or discoloration due to misuse, abuse, abrasion (including sand abrasion), and improper storage or the alteration of the material by paints, chemicals, or other substances not recommended for PERMALATT Aluminum Products.
- Any part relative to gate hardware, mechanism, and/or operators. Please refer to Gate Hardware Warranty.
- Cost of installation or removal, freight, labor, and similar costs.
- Any incidental or consequential damages.
- All Saltwater and Corrosive Environments installations, including installations where the atmosphere is influenced by bodies of salt water, salt environments, or contaminant conditions, must adhere to the care and cleaning guidelines specified on the PERMALATT website (Permalatt.com), as modified from time to time.

Other considerations:

- The manufacturer of this material does not recommend or approve this material for all possible end use applications. Your Local Code Authority should be consulted regarding safety and applicability for intended usage.
- The Warranty gives you specific legal rights, and you may also have other rights that vary from state to state.

The warranty statements contained in this limited warranty set forth the only warranties extended by Permalatt Products, Inc. for its PERMALATT Aluminum products, and the provisions of this warranty shall constitute the entire liability of Permalatt Products, Inc. and the property owner's exclusive remedy for breach of this warranty. No other warranty, written, made by Permalatt Products, Inc. or any agent thereof, which is not contained or authorized herein, will be recognized by Permalatt Products, Inc.

Permalatt.com

PO Box 405, Bremen, IN 46506

Effective 10-09-2023

REGISTER YOUR WARRANTY AT PERMALATT.COM



Hidden Weld
Aluminum Lattice
Patent Pending



10-Step Powder Coating Process

The 10-step powder coating process prides an uncompromising quality created by state-of-the-art technology. Our system is certified by the Powder Coating Institute providing peace of mind in your investment. Our powder coating is verified by the American Architectural Manufacturers Association, has AAMA 2604 specifications and is covered by a Lifetime Limited Warranty.

Step 1: The raw premium-grade aluminum is inspected to be free of blemishes and is not exposed to the outdoor elements.

Step 2: The product enters a heated cleaning stage to remove extrusion debris and fabrication oils.

Step 3: Clean: City water rinse.

Step 4: Cleaner: Recycling reverse osmosis water rinse.

Step 5: Cleanest: Pure reverse osmosis water rinse.

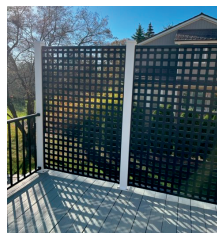
Step 6: Sealer: Dried-in-place aluminum sealer.

Step 7: A 200 MPH air blast removes water drops from the pre-treated aluminum.

Step 8: A convection oven completes the dry-off process.

Step 9: Powder is applied with 18 automated & 2 manual spray guns. Compressed process air is dried to -35°F Dew Point for superior adhesion.

Step 10: The powder coating is then bonded and adhered to the aluminum substrate in a 400 degree cure stage.



Clip & Cover Installation

Easy 1-2-3 Installation



1 Insert channel clip into slat



2 Fasten channel clip to frame

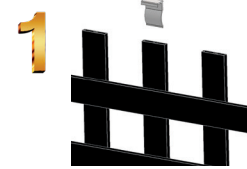


3 Snap cover over channel clips

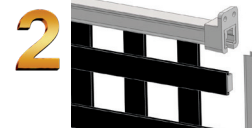


Channel Installation

Easy 1-2-3 Installation



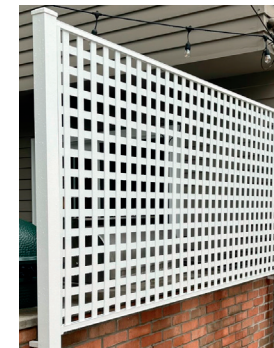
1 Insert spacer clip into slat



2 Add U-channel, mount & trim channel



3 Fasten mount to frame



Deco Post Options



53" Post Package

POST PACKAGE INCLUDES:

- One 53" 4" X 4" Aluminum Deco Post with 0.090" wall & welded plate
- One Flair
- One Cap
- Bolts
- Spacers

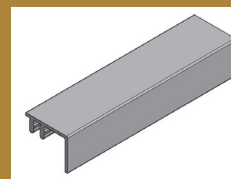
SINGLE POSTS AVAILABLE IN 8' & 10' LENGTHS

All Deco Aluminum Posts are 4" x 4" with a 0.090" wall.

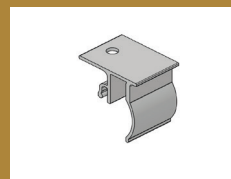
Available in all powder coating colors.



Clip & Cover Installation Accessories



Channel Cover

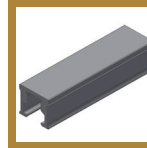


Channel Clip

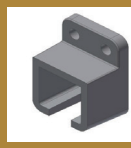
Scan for Clip & Cover Installation Instructions



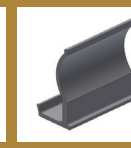
Channel Installation Accessories



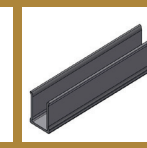
U-Channel



Mount



Spacer Clip



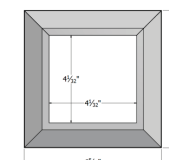
Trim Channel

Scan for Channel Installation Instructions



4" FLAIR & BRACKET KIT

Available in all powder coating colors.



APPLICATIONS



- Arbors and Trellises • Pergolas and Gazebos
- Fence & Porch Accents • Indoor or Outdoor Use



- Deck Skirting • Privacy Dividers
- Commercial or Residential



Products other than Permalatt's lattice sheets and channel accessories (such as posts, rails, gate accessories, etc.) were provided by the client and not from Permalatt Products.

LATTICE COMPARISON CHART

		OTHER LATTICE PRODUCTS		
Categories		Plastic Lattice (Polyethylene)	Hollow PVC	Wood Lattice
Traditional Appearance	EXCELLENT Ideal Replacement for Not 3-D Wood with 3-D Effect	FAIR Looks Like Imitation	GOOD Nice Replacement for Wood	GOOD For First Year
Thickness	1/2" Thick Standard, 3-D 1/4" Slat Over 1/4" Slat	7/32" Very Thin & Flat	1/2" Thick Standard, 3-D	1/2" - 3/4" Thick, 3-D
Fire Rating	EXCELLENT Class A-1 UBC Rating Approved for Interior Usage	POOR Class C-3 UBC Rating Fire Hazard, Toxic Fumes	GOOD Ask for Information Unsafe for Interior Usage	POOR Fire Hazard, Quick Burn
Thermal Expansion	GOOD Dimensionally Stable	POOR Expands 3 Times More than PVC or Wood	GOOD Dimensionally w Stable	GOOD Dimensionally Stable
Warp Resistant	EXCELLENT Dimensionally Stable	POOR Will Warp Without Expansion Room	EXCELLENT Dimensionally Stable	POOR Moisture - Twist & Bend
Easy To Cut	GOOD Cuts Like Wood	GOOD Thin Material, Hard to Handle	FAIR Hollow Core May Crack, Jagged Edges When Cut With Wood Blade	GOOD What You're Used To
Colorfast Weatherability	EXCELLENT Color Throughout, Limited Lifetime Warranty	FAIR Will Discolor in Time	EXCELLENT Will Not Discolor	POOR Weathers Quickly
Maintenance Free	EXCELLENT No Scraping & Painting, Limited Lifetime Warranty	FAIR Will Need to be Replaced in Time	EXCELLENT No Scraping & Painting	POOR Replace Every 3-4 Years Needs Painting / Treating Annually
Splinter Resistant	EXCELLENT Solid Core with the DuraShell® Surface	GOOD May Splinter or Shatter with Time	FAIR May Shatter When Cut	POOR Splits & Splinters Easily
Non-Cracking	EXCELLENT Solid Core with the DuraShell® Surface	FAIR Can Crack with Screws	GOOD Can Crack with Screws	POOR Will Crack From Sunlight Exposure
Resistant To Rotting	EXCELLENT Will Not Rot	EXCELLENT Will Not Rot	EXCELLENT Will Not Rot	POOR Will Rot Over Time
Insect Proof	EXCELLENT No Treatment Needed	EXCELLENT No Treatment Needed	EXCELLENT No Treatment Needed	POOR Insects Love Wood
Durability	EXCELLENT Solid Core with the DuraShell® Surface	FAIR Becomes Brittle With Time	GOOD Good Quality Material	POOR Breaks Down Easily

NON-PRORATED LIMITED WARRANTY

Permalatt Products, Inc. warrants to the original purchaser only that Permalatt vinyl lattice and vinyl products, under normal use and service, (a) will not peel, flake, rust, blister, crack, corrode or become brittle, and (b) will not require painting, replacement or maintenance due to deterioration.

This Limited Warranty covers defects in material and workmanship arising during the manufacturing process.

If the purchaser is a living person and the lattice is purchased for personal or household application, the warranty period is the lifetime of the purchaser; In all other instances, the warranty period is 30 years from the date of purchase.

All claims under this Limited Warranty must be made in writing to Permalatt Products, Inc., P.O. Box 405, Bremen, IN 46505, within the warranty period and promptly after discovery of the claimed defect, describing the defect claimed, together with the proof of purchase. If a claim is made, Permalatt Products, Inc. shall have a reasonable time and opportunity to inspect the lattice. If the lattice has defects in material or workmanship covered by this Limited Warranty, and the warranty claim is made in accordance with the terms hereof, then Permalatt Products, Inc. shall, at its option either replace the product or refund the original purchase price. Freight, labor and any other similar costs shall not be paid by Permalatt Products, Inc.

This Limited Warranty is void if any of the following occurs with respect to the product: (a) improper installation, (b) misuse, neglect, vandalism, accident or improper storage, (c) altering or changing the product by reason of applied heat, welding, solvent, epoxies or any other alteration, (d) impacts of objects, fire, flood, hurricane, tornado or other storms, or casualty or acts of war, (e) painting the surface of the product, or (f) adverse effects of air pollution.

This Limited Warranty contains the only express warranties made by Permalatt Products, Inc., and sets forth the purchaser's exclusive remedy for breach of warranty. No other warranties, express or implied, are made. Permalatt Products, Inc., specifically disclaims the implied warranties of merchantability and fitness for any particular purpose, and shall not be liable for any direct, special, incidental or consequential damages.

This Limited Warranty gives you specific legal rights, and you may also have other rights which vary from state to state.



888-457-4342
PERMALATT.COM



PREMIUM 3D VINYL LATTICE

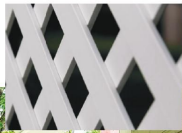


PREMIUM 3D VINYL LATTICE

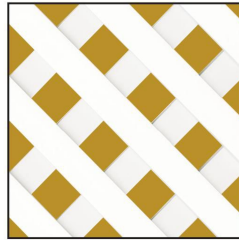
DURASHELL®

DuraShell® is Permalatt's strongest and most durable vinyl lattice. DuraShell® lattice is resistant to insects, mold and mildew and has minimal fading. Produced with a 3D solid core construction, this lattice product will last much longer than plastic or wood lattice. DuraShell® lattice is maintenance free, therefore giving you the promise of long lasting beauty!

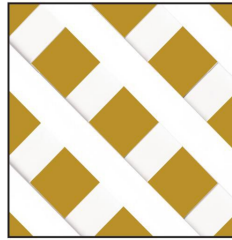
DIAGONAL LATTICE CLOSEUP



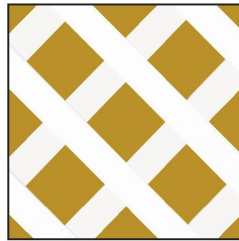
DIAGONAL LATTICE PATTERNS



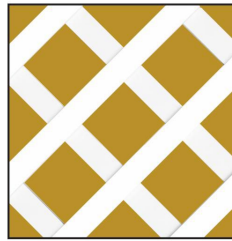
1" Diagonal Opening:
1" x 1/4" Slats
(N/A in Platinum Gray or Almond)



1-7/8" Diagonal Opening:
1-1/4" x 1/4" Slats

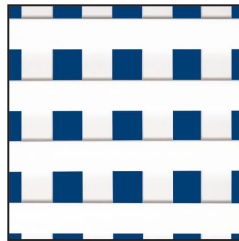


2-3/4" Diagonal Opening:
1-1/2" x 1/4" Slats
(Snow White Only)

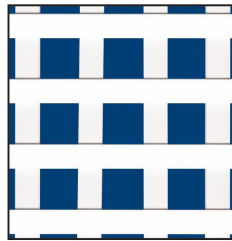


3" Diagonal Opening:
1-1/4" x 1/4" Slats

SQUARE LATTICE PATTERNS



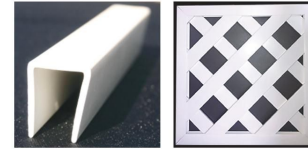
1" Square Opening:
1" x 1/4" Slats
(N/A in Platinum Gray or Almond)



2" Square Opening:
1-1/4" x 1/4" Slats

ACCESSORIES

U-CHANNEL



U-Channel installs easily and provides a finished edge to lattice projects.

H-CHANNEL

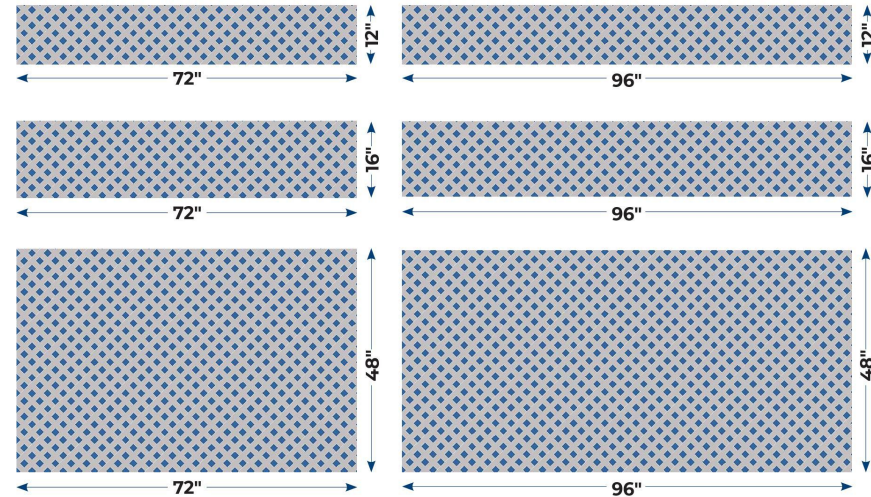


Need to connect two sheets of lattice? Try our H-Channel to connect them.



DuraShell® diagonal lattice application utilizing H-Channel and U-Channel in a commercial pergola project.

SHEET SIZES



DuraShell® vinyl lattice products are available in a number of sheet sizes. Please note that not all lattice sheets are available in all of the sizes shown. For custom sizes, please contact customer service for a free estimate. Custom sizes cannot exceed 4' x 10'

Snow White

Almond

Laguna Dune

Sandtone

Khaki

Platinum Gray