



Red Devil

ONETIME® Lightweight Spackling

ONETIME® Lightweight Spackling fills dents, cracks, nail holes, and other small and large holes in interior and exterior surfaces such as drywall, plaster, wood and stucco. This lightweight, pre-mixed formula spreads easily for fast, professional repairs to walls and ceilings in just one application. It dries fast, doesn't need sanding and won't shrink, crack or flake. It can be painted within minutes and cleans up easily with water.



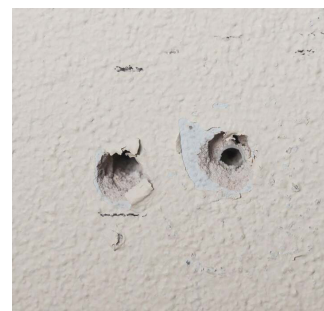
MEDIUM GAPS & HOLES

Ideal for filling medium-sized holes in walls and ceilings, such as those caused by accidental damage, the removal of light fixtures or other large wall fixtures. ONETIME® Lightweight Spackling effectively restores surfaces, making them ready for painting or other finishes. For some medium to larger gaps or holes, it may be necessary to use a ONETIME® Wall Repair Patch to ensure a solid repair.



GAPS & CRACKS

ONETIME® Lightweight Spackling is effective for patching small to medium cracks in drywall and plaster walls and ceilings. It provides professional repairs in just one application, and won't sag, shrink, or crack over time. It is also useful for repairing gaps and imperfections in wooden trim, baseboards, and molding.



SMALL HOLES

Often used to fill small holes and dents in drywall, plaster, or wood surfaces, it's particularly useful for covering holes left by nails, screws, and other fasteners, or for repairing minor damage before painting or wallpapering. ONETIME® Lightweight Spackling applies easily, smoothing out walls and surfaces with no sanding required before painting.