



PERGOLA | BIOCLIMATIC | UMBRELLA | AWNING | ZIP & GLASS SYSTEMS

OUR PRODUCTS

AluWind

Wind Breaker



With its strong, durable, and environmentally adaptable features, the system consists of a total of two panels: one fixed and one movable.

General Features

- Manual - Piston and Motorized options available

Glass Combinations

- Fixed glass 5 mm tempered, movable glass
- 5 mm tempered

Maximum Dimensions

W : 2000 mm H : 1800 mm



AluShade-C

Ceiling Zip Screen



The roof zip screen is a perfect solution for controlling sunlight and airflow in both indoor and outdoor spaces. Its durable fabric structure and zip technology provide extra resistance to wind. This screen system, which can be easily opened and closed with motorized or manual options, enhances outdoor comfort while offering an aesthetic look. The roof zip screen provides long-lasting protection against weather conditions and offers a modern and stylish shading solution.

General Features

- Remote control
- Different aluminum colors suitable for each RAL and anodizing color

Wind Resistance



110 km/h

Maximum Dimensions

W : 4000 mm H : 4000 mm



AluShade-V

Vertical Zip Screen



Zip screen is a perfect solution that combines elegance and functionality for modern spaces. Its durable fabric provides superior protection against external factors such as wind, sun, rain, and insects. While enhancing the aesthetics of interior spaces, it offers a wide range of color and fabric options to suit any style. Ideal for both residential and commercial spaces, the zip screen is a long-lasting and practical shading system.

General Features

- Remote control
- Different aluminum colors suitable for each RAL and anodizing color

Wind Resistance



110 km/h

Maximum Dimensions

W : 4000 mm H : 4000 mm



AluSky

Movable Glass Roof



With the strength and lightness of aluminum profiles, combined with the transparency of automatic sliding glass panels allowing natural light to enter, you can enjoy both structural durability and water drainage. Integrated spotlights ensure you can continuously enjoy your new living space while seamlessly taking in the view.

Glass Combinations

- 6 mm comfort cool plus glass + 9 mm H.B + 5 mm tempered glass
- 4 mm comfort cool plus glass + 10 mm HB + 4 + 4 8 mm tem. laminated

Wind Resistance



74 km/h

Maximum Dimensions

W : Unlimited P : 7000 mm



AluSunroom

Fixed Glass Roof



It is designed to be used for many years, including in adverse weather conditions. All materials used are in a design that does not harm human health and are presented with safety glass.

General Features

- 4 mm comfort cool plus glass
- 10 mm HB + 4 + 4 8 mm laminated + temper

Fixed Roof Material Types

- Glass Roof
- Sandwich Roof
- Polycarbon

Maximum Dimensions

W : Unlimited P : 4005 mm



AluSlide

Sliding Glass



It stands out with its elegance, durability, and functionality. It offers an expanded field of view and provides an aesthetic look with transparent glass panels. It ensures a seamless transition between indoor and outdoor spaces, offering effective protection against weather conditions.

Glass Combinations

6 mm + 20 mm + 6 mm

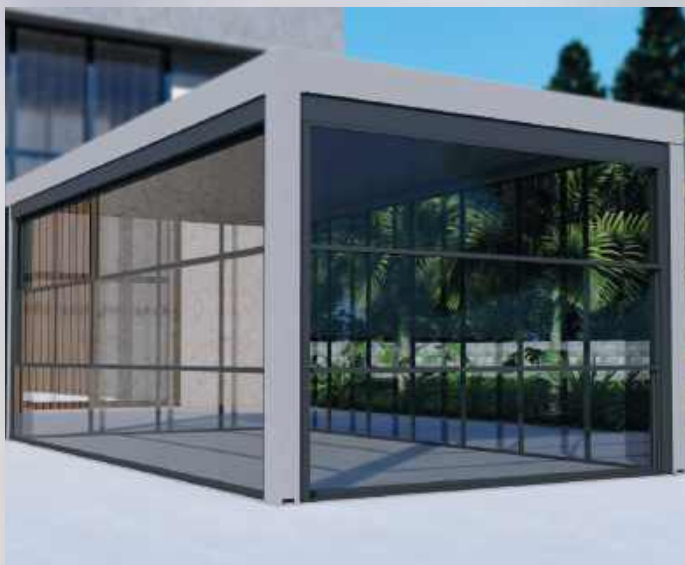
Maximum Dimensions

W : 6000 mm H : 4000 mm



AluView

Guillotine Glass



It features the ability to stop at any desired position and provide ventilation, operated by remote control or button application. Standard options include models that collect at the bottom, collect at the top, and a cleanable balcony model.

Glass Combinations

Laminated
Thermally
Toughened
Glass
Double-Glazed

Thickness

4+4 mm
8 mm
24 mm

Wind Resistance



UNE-EN 2211:2017
2000Pa 373 km/h

Maximum Dimensions

W : 4000 mm H : 3250 mm



AluPergola Classic

Bioclimatic System



The motorized aluminum Bioclimatic system is a modern and eco-friendly structure designed to provide maximum comfort and airflow in outdoor spaces. With adjustable aluminum panels that can open and close, the system offers natural climate control by regulating sunlight, shade, and ventilation according to your needs. Fully motorized, it can be easily operated via remote control or integrated into automation systems. Rainwater is efficiently drained through built-in gutters.

Snow Resistance



120 kg/sqm

Water Resistance



UNE-EN 1873:2006

150l/sqm/h

Wind Resistance



Protects against wind speeds up to 110 km

UNE-EN 13659:2016

600 pa 224 km/h

Maximum Dimensions

W : 4000 H: 8750 mm

Maximum Dimensions

W : 7000 H: 5500 mm



AluPergola Twist

Bioclimatic System



The motorized aluminum Bioclimatic system is a modern and eco-friendly structure designed to provide maximum comfort and airflow in outdoor spaces. Thanks to the axial movement of the aluminum panels, it offers natural climate control by adjusting sunlight, shade, and ventilation according to your needs. Fully motorized, the system can be easily controlled via remote control or integrated with automation systems. We also have a manual system that can be used to turn the panels with a handle. You can choose a manual or fully motorized system according to your wishes. Rainwater is efficiently drained through built-in gutters.

Snow Resistance



120 kg/sqm

Water Resistance



UNE-EN 1873:2006

150l/sqm/h

Wind Resistance



Protects against wind speeds up to 110 km

UNE-EN 13659:2016

600 pa 224 km/h

Maximum Dimensions

W : 4000 H: 8750 mm

Maximum Dimensions

W : 7000 H: 5500 mm



AluPergola +

Bioclimatic System



The motorized aluminum Bioclimatic system is a modern and eco-friendly structure designed to provide maximum comfort and airflow in outdoor spaces. Thanks to the dual functionality of the aluminum panels, which can both open and close as well as move axially, the system offers natural climate control by adjusting sunlight, shade, and ventilation according to your needs. Fully motorized, it can be easily controlled via remote control or integrated into automation systems. Rainwater is efficiently drained through built-in gutters.

Snow Resistance



120 kg/sqm

Water Resistance



UNE-EN 1873:2006

150l/sqm/h

Wind Resistance



Protects against wind speeds up to 110 km

UNE-EN 13659:2016

600 pa 224 km/h

Maximum Dimensions

W : 4000 H: 8750 mm

Maximum Dimensions

W : 7000 H: 5500 mm



AluShade Max

Pergola System



Aluminum Fabric Pergola is a stylish shading solution designed for modern outdoor spaces, offering both comfort and aesthetic appeal. With its aluminum profiles and durable fabric, it provides protection against all weather conditions. The automatic mechanism allows the pergola fabric to be easily opened and closed via remote control or integrated automation systems, giving you control over sunlight, shade, and rain. Rainwater is efficiently drained through built-in gutters.

Snow Resistance



60 kg/sqm

Water Resistance



UNE-EN 1873:2006

56l/sqm/h

Wind Resistance



Protects against wind speeds up to 110 km

UNE-EN 13659:2016

600 pa 224 km/h

Maximum Dimensions

W : 12000 mm H : 12500 mm



AluShade Flex

Pergola System



Aluminum Fabric Pergola is a stylish shading solution designed for modern outdoor spaces, offering both comfort and aesthetic appeal. With its aluminum profiles and durable fabric, it provides protection against all weather conditions. The automatic mechanism allows the pergola fabric to be easily opened and closed via remote control or integrated automation systems, giving you control over sunlight, shade, and rain. Rainwater is efficiently drained through built-in gutters.

Snow Resistance



60 kg/sqm/h

Water Resistance



UNE-EN 1873:2006

56l/sqm/h

Wind Resistance



Protects against wind speeds up to 110 km

UNE-EN 13659:2016

132 pa/ 49 km/h

Maximum Dimensions

W : 12000 mm H : 12500 mm

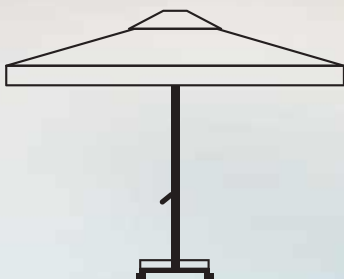


SunTema

Umbrellas



Our umbrellas, available in various sizes upon request, are the perfect solution for protection from both rain and sun. With a wide range of automatic and manual models, they add both aesthetics and functionality to your outdoor spaces.



Maximum Dimensions

W : 3000 H: 3000 mm

Maximum Dimensions

W : 5000 H: 6000 mm



SunTema Twist

Free Standing Double Sided Awning



Thanks to its double-sided opening feature, it protects both sections from harsh weather conditions and creates a comfortable space for people. It makes it possible to enjoy outdoor time without being affected by adverse weather such as sun, rain, or snow. The double-sided retractable awning model is indispensable for businesses with open areas.

General Features

- % 100 Water proof
- Rain, wind and sun sensor

Maximum Dimensions

W : 2500 H: 2400 mm

Maximum Dimensions

W : 3000 H: 4800 mm

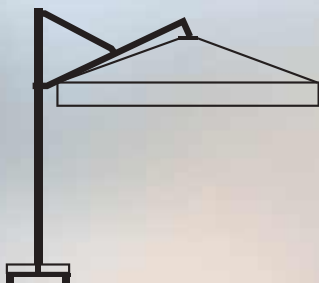


SunTema Side

Side Body Umbrella



Our umbrellas, available in various sizes upon request, are the perfect option for protection from rain and sun. Their side pole design offers a sleek appearance and easily adapts to any space.



Maximum Dimensions

W : 2500 H: 2500 mm

Maximum Dimensions

W : 3000 H: 4000 mm



SunTema Plus

Cassette Awning



A cassette awning is one of the most effective ways to protect your outdoor spaces while adding a touch of elegance. Combining aesthetics and functionality, this modern system provides superior sun protection with its stylish design, making it perfect for both residential and commercial settings.

General Features

- % 100 Waterproof
- Rain, wind and sun sensor

Maximum Dimensions

W : 3500 H: 3000 mm

Maximum Dimensions

W : 4000 H: 4800 mm





@alutemaglobal

ALUTEMA ALUMINIUM

Yeni Yol 1. Sokak
Bomonti Business Center
No:8 İç Kapı No: 79
Şişli / İSTANBUL-TR



www.alutemaglobal.com

