



PROFESSIONAL BROCHURE



Building a better future.





Building a better future.

At SuperForm we understand that the construction industry is changing, building codes are getting tighter, and our clients need a better solution in the construction industry. SuperForm is a family-owned business based in Pincher Creek, Alberta, with manufacturing facilities in Canada and the USA. We bring our customers confidence and peace of mind by providing them with environmentally sustainable, efficient, and reliable insulation products that can withstand some of Mother Nature's most extreme weather.

From the foundation to the roof, SuperForm Products provides design freedom and versatility, supporting all custom designs and allowing for every exterior finish you choose. SuperForm will enable you to build better, faster and more efficiently. We offer all our clients an eco-friendly shell with benefits such as superior strength, disaster resilience, and sound-storm proof that last a lifetime.

SuperForm is committed to leading the Construction Industry with dedication and passion for high quality, continuous improvement, and excellent customer service. We hold ourselves accountable to the SuperForm standard through our dedication to our product and our passion for quality, sustainability and continuous improvement. When specifying SuperForm, you can assure your clients that you use the best building solution available today.

You will enjoy your benefits for decades to come.



Fire Resistant

SuperForm ICF withstood exposure to intense flame without structural failure in firewall tests. The extremely low flame spread and smoke development results in up to a **4-hour fire protection rating. ASTM E119**. Conventional wood walls have a fire rating of under 20 minutes.



Rot/Mold Free

SuperForm is 100% rot and mold/mildew free, with absolutely no food source available for anything to grow.



Net Zero Green Construction

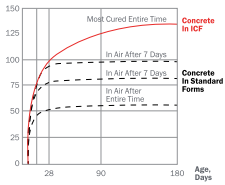
Ongoing laboratory and site testing has proven that a home or commercial building built with SuperForm ICF can meet net zero requirements. SuperForm ICF achieves **a thermal transmittance of 0.260 m²K/W (0.046 ft²-hr-°F/BTU), and thermal resistance of 3.70 W/m²K (21.0 BTU/ft²-hr-°F)**. SuperForm ICF superior energy performance is the result of our wall system working in conjunction with the thermal mass of a solid concrete core to provide one of the strongest, most energy efficient, and airtight wall systems available today. **Effective R-value performance of over R40.**





Long Term Value

SuperForm insulated building solutions are designed to be cost-effective and competitive, providing maximum value for every dollar. SuperForm ICF is designed as an all-in-one system with unique design features facilitating a quick, easy build, saving you significant time and labour. Since the structure is built with concrete and insulation that doesn't break down, off gas, or lose R-value over time, your building will have infinite durability and lower maintenance during its lifetime.



Disaster Resilience

The strength of SuperForm ICF is derived from a solid concrete core. In our forms, concrete is cured in a perfect environment, making it 30% stronger than conventional concrete walls. Combining our 12" high block, which gives engineers and builders more rebar options, creates one of today's strongest walls. SuperForm provides high impact resistance and **withstands up to 400km/h (250 mph) winds**, ensuring safety within a building.



Unmatched Comfort

SuperForm ICF brings you **confidence and peace of mind** knowing you are creating a home or space with unmatched comfort. With **continuous dense insulation and a solid concrete core, you receive the most air-tight building envelope available.** This **eliminates drafts or cold spots** resulting in a uniform temperature in your home all year round, no matter what mother nature throws at you.



Energy Efficiency

The building industry demands tighter, more energy-efficient buildings with effective R values of 40 and above. SuperForm ICF offers better energy solutions for any structure. Studies show that SuperForm ICF has a 58% better R-value than conventional wall systems, resulting in energy savings of up to 60% per year. This is achieved by the thermal mass of the concrete, superior air tightness, and continuous insulation on both sides of the wall assembly, reducing the size of heating and air conditioning equipment.



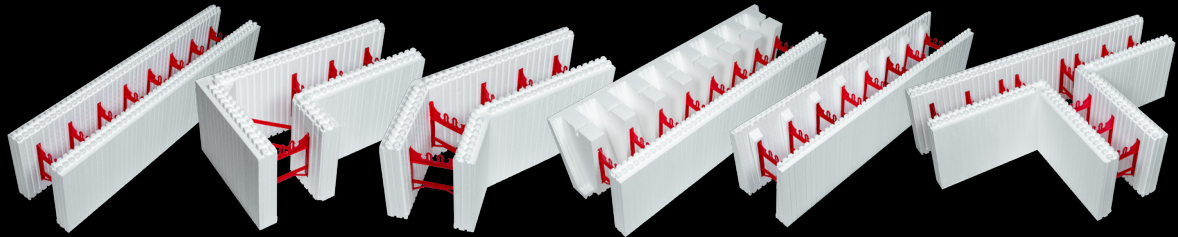
Improved Indoor Air Quality

Maintaining a healthy environment is essential in any indoor space, and SuperForm ICF provides a wall system that greatly enhances air quality. **Our walls reduce air infiltration by 75%, increasing the air quality in your home.**

For more information on tests, check out our website.

ICF Series

SuperForm ICF's series includes Straight Block, Corner Blocks, Top Blocks, T Blocks, Brickledge Blocks, 45° Blocks, Height Adjusters and End Bucks. 4', 6", 6.5", and 8" concrete core sizes to meet your **residential, commercial, agriculture, or industrial** needs.



Insulation Series



SuperForm EPS+ is a high-grade expanded polystyrene (EPS) rigid foam insulation. It provides a dependable insulation product that can be used for almost every type of building insulation application. Its stable R-value, high compressive strength, and ability to resist and quickly release moisture make EPS+ ideal for perimeter, below grade, and floor insulation. Additionally, EPS+ meets CAN/ ULC S701 and ASTM C578 Standard Specification for Rigid, Cellular Polystyrene Thermal Insulation.

Applications: Wall, Ceiling, Perimeter, Below Grade, Floor Insulation, Roofing, EIFS, Structural Insulated Panels (SIP), Precast Floor & Wall Panels



SuperForm Max+ is a premium Neopor® graphite polystyrene (GPS) rigid foam insulation. MAX+ features all of the performance attributes of EPS+, complimented by the added benefits of a unique graphite cell structure. SuperForm MAX+ delivers one of the most efficient, cost-effective, and sustainable insulation products available. Additionally, MAX+ meets CAN/ ULC S701 and ASTM C578 Standard Specification for Rigid, Cellular Polystyrene Thermal Insulation. SuperForm MAX+ uses high-purity graphite particles to create a reflective cell structure. This distinct cell structure reflects radiant heat as it travels through the insulation. Get maximum energy efficiency, stability and durability, and moisture management with MAX+.

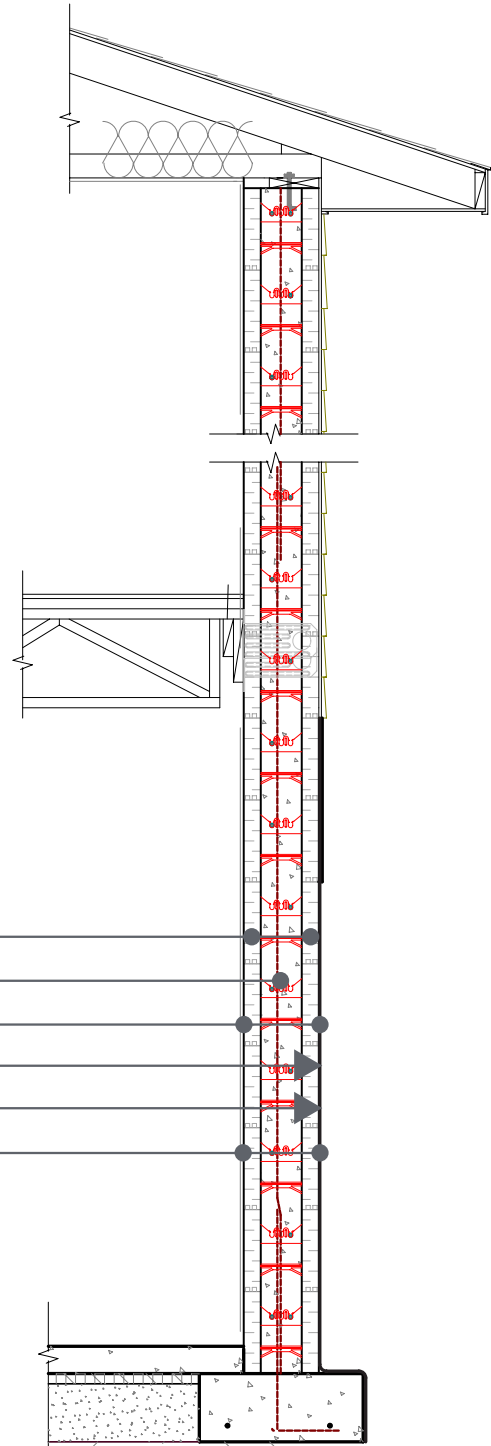
Applications: Wall, Ceiling, Perimeter, Below Grade, Floor Insulation, Roofing, EIFS, Structural Insulated Panels (SIP), Precast Floor & Wall Panels

A Complete Package

SuperForm Products offers you the Complete Package: A premium Wall System, your rigid insulation and best-in-class accessories enhancing your SuperForm Building Experience. Get your full Insulated package on one truck from one vendor, maximizing every load, order and project. 100% of SuperForm ICF components are manufactured in-house in Canada and USA, meeting all international building codes.

SuperForm ICF gives you confidence that your investment will stand the test of time by completing all major building steps into one simple process, saving significant time and resources.

- ▶ Forming System ●
- ▶ Wall Structure (rebar & concrete) ●
- ▶ Continuous Insulation ●
- ▶ Air Barrier ●
- ▶ Vapour Barrier ●
- ▶ Interior & exterior attachment points ●



Interlocking Knobs ●

Our unique square knob design offers 35% more surface friction fit than other systems on the market. The horizontal connection is so tight there are absolutely no vertical joint spreading.

Design Flexibility ●

SuperForm ICFs are designed with maximum design freedom with 1" repeating cut lines. This allows you to match any plan on the jobsite and helps reduce waste.

Bullet-proof Corners ●

Our newly updated corner tie and bracket solve one of the biggest challenges ICF installers face: corner blowouts. Our corner requires less additional support saving you time and money, and gives you peace of mind during the concrete pour.

Tie ●

The SuperForm tie stands tall with outstanding performance when compared to other systems. Our thick red tie flange (7.25mm – 5/16th) every 6" is made of virgin polypropylene resulting in a higher, more consistent tensile strength. You can have confidence that whatever you fasten to them will be secure. Our flow-through design allows concrete to flow easily and bond to all EPS surfaces.

Grooved Inside Panel ●

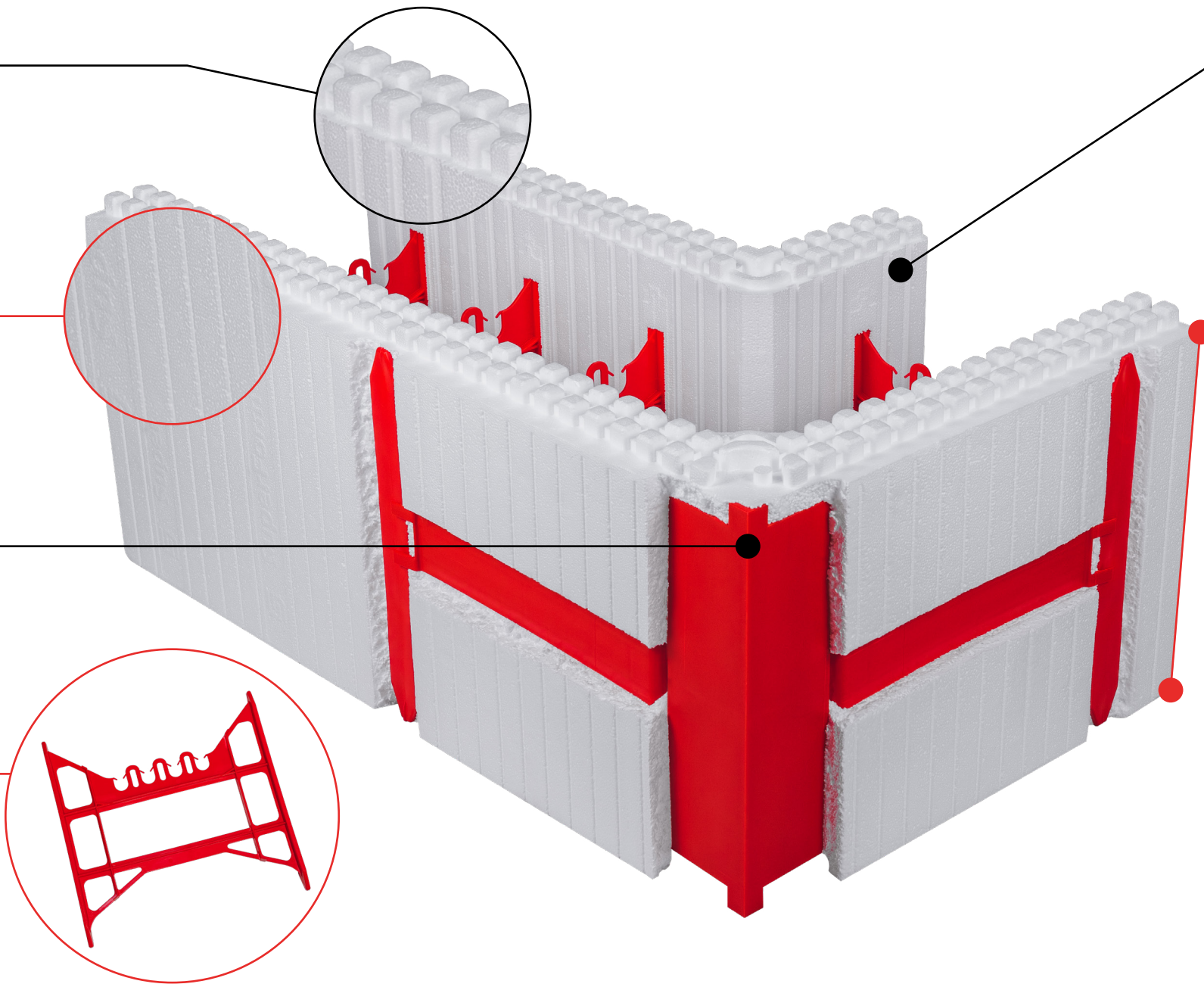
Our grooved inside panel is designed for better concrete adherence. Our panels lock the concrete and EPS together, making a connection that will not separate. The built-in anti-lift technology, locks all blocks down by concrete pressure on it. This eliminates the need to tie or lock down each row, making your installation faster.

Standard Sizing ●

Our standard sizing of 4' long x 1' high makes building and estimating extremely simple. Our light-weight block is easy to handle by yourself, making it easier to work in trenches or on scaffolding. The 12" block removes all vertical bulging in the wall giving you a flatter wall and more rebar options at 12" centers if needed.

6" Tie Spacing

Our 6" tie spacing provides up to 33% more tie per block resulting in one of the strongest blocks on the market. With only 4" of foam between ties and 2" of foam on the end of the block, this eliminates vertical or horizontal bulging along block planes and provides a flatter, straighter, and stronger wall. The 6" inch tie spacing also allows for more attachment points in your wall, giving you more options.



What SuperForm Offers

We hold ourselves accountable to the SuperForm Standard through our dedication and passion for quality, continuous improvement and excellent customer service.

► **Get started today**

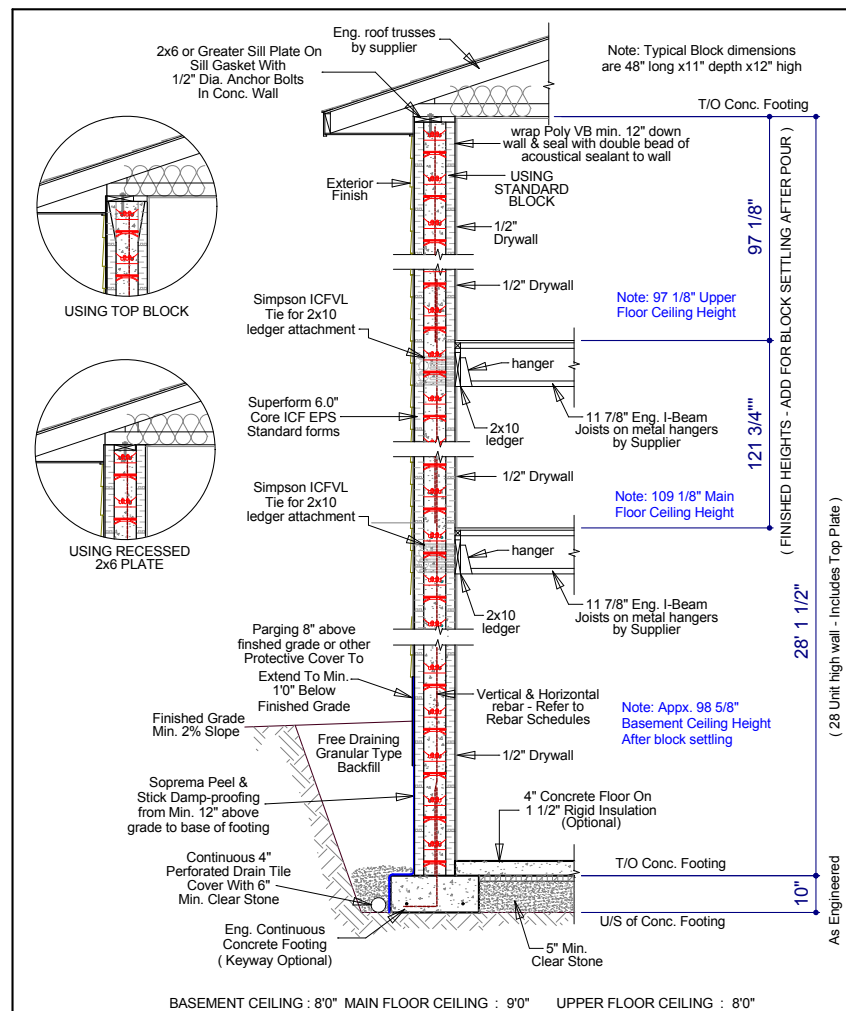
SuperForm ICF has a trained team of residential and commercial experts to help you with your SuperForm Experience. Looking to become a distributor or installer? We provide intensive training courses for you to reach your goals. We offer extensive technical support, service, and best installation practices to maximize job site efficiency and simplify your experience. We provide code compliance advice for local, regional, and national building codes. We have your back every step of the way. To get started, call 877-627-3555 to speak with a SuperForm Expert today.

► **Resources**

SuperForm products make every process as easy and efficient as possible. We offer valuable design tools and resources, like calculators, engineering schedules, technical drawings, etc. Whatever your needs are, our network of experts North America-wide provides industry-leading technical support.

► **Quality Control**

SuperForm manufactures all its components in-house, allowing full control over our manufacturing process and ensuring our products are produced to the highest standards. SuperForm follows a strict quality control process from measuring products to a visual check on everything produced. We test all products daily, and our staff are trained and audited daily to ensure 100% conformance to our quality standards. We are audited by QAI laboratories every quarter ensuring we align and exceed the industry standards.



Drawn By: Laura Trent | Date: March 2018 | Pg No: 1 of 1 | DWG No: 4.3.4
Copyright © Superform Products Ltd. 2018



T 877.627.3555
F 403.627.3553
E info@superformicf.com
superformicf.com

Follow Us On



Specs

Tie Flange Thickness: **Up 6.25mm (1/4")** | Tie Spacing: **6"**
Wind Resistance: **Up to 400km/h (250mph)**
ASTM E-119 Fire Rating: **4 Hours** | Flame Spread: **Less than 10**
Smoke Development: **Less than 300**
Sound Class Rating: **55** | R Value: **24 stand alone**
R Value Performance: **Over a R40**
Up to 22 trees saved by using ICF vs wood frame on a typical home
ICC # ESR-3466 | QAI # B1051-1

Lets discuss your next project.

Distributed by:



Construction Methods Comparison

