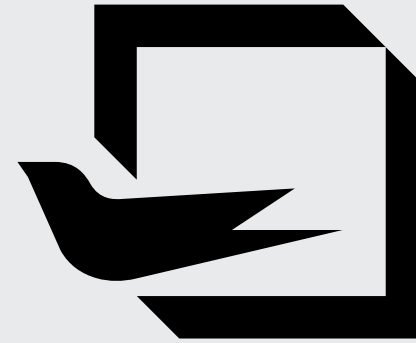


Optipro



OPENING
NEW
HORIZONS

+31
years of experience

+70.000
square meters

+2.500
partners



Optimedia has been producing PVC and Aluminum joineries since 1994, amassing an impressive and modern production system. Since 2006, we have started exporting our products currently having more than 2.500 B2B partners worldwide.

OUR VISION:

To be a leader in the production of PVC and Aluminum joineries, offering support to all our partners. To achieve this, we have kept to our core principles, maintaining the quality of our products and the relationships with our partners as top priorities.

OUR MISSION:

To produce windows and doors that have certified and proven characteristics, manufactured and delivered to the highest market standards.



GUARDIAN GLASS is one of the largest and most innovative glass manufacturers in the world. Founded in 1932 in Detroit, Michigan, the company operates on five continents, serving more than 160 countries.

guardianglass.com



SAINT-GOBAIN GLASS is the european leader in the production of construction glass. The factory in Călărași, Romania, has the most modern float glass production line in Europe. The thermal, acoustic and security performances of SAINT-GOBAIN glazings recommends them for the most creative and original architectural solutions.

saint-gobain-glass.com



WINKHAUS develops, manufactures and sells hardware for windows and doors, together with automatic closing, access and security systems. The german WINKHAUS group was founded in 1854, remaining a family business with over 2.000 partners worldwide.

winkhaus.com

OptiPro

Triple Gasket Window

PRODUCT GEOMETRY

Frame depth: **3 1⁄8 in**
Sash depth: **3 1⁄2 in**

IGU OPTIONS

Double/Triple-Pane
maximum IGU thickness: **2 3⁄8 in**

THERMAL PERFORMANCE

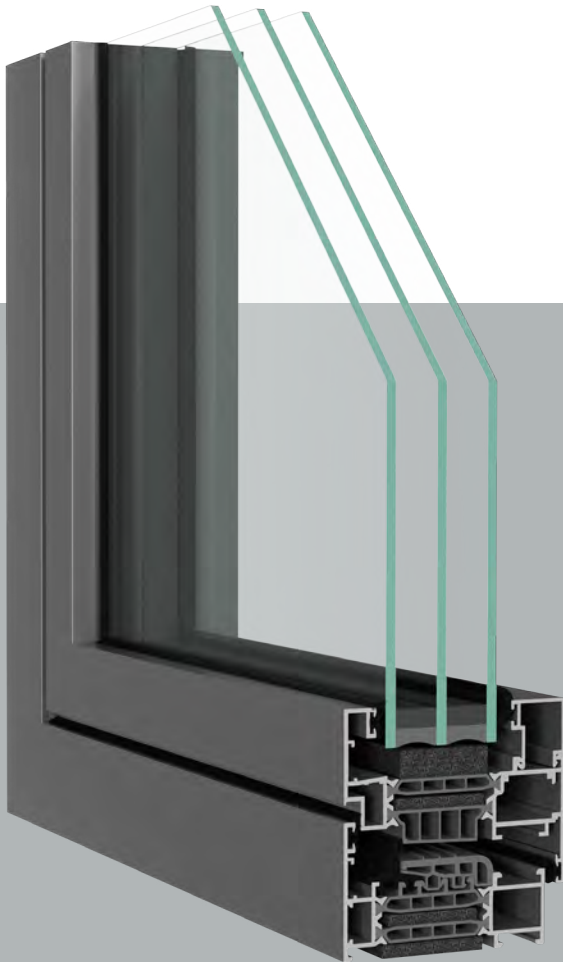
U_{factor} ≥ 0,13 Btu/h·ft²·F

MAX. ACOUSTIC PERFORMANCE

46 dB

OPENING STYLES

Tilt & Turn
Casement
Hopper / Awning
Fixed



* THE PHOTOS ARE FOR INFORMATIONAL PURPOSES ONLY.

OptiPro is an innovative system offering superior sealing, excellent energy efficiency and outstanding acoustic insulation. Adaptable to extreme conditions and with a reduced frame depth, it is perfectly suited for passive houses and provides maximum comfort. Its outstanding performance in AWS tests and easy assembly make it an ideal option for large-scale production. With a hidden hinge design option and highly secure hardware, it brings light and security to any space.



OptiPro

Triple Gasket Window
Hidden Sash

PRODUCT GEOMETRY

Frame depth: **3 1⁄8 in**
Sash depth: **3 1⁄8 in**

IGU OPTIONS

Double/Triple-Pane
maximum IGU thickness: **2 in**

THERMAL PERFORMANCE

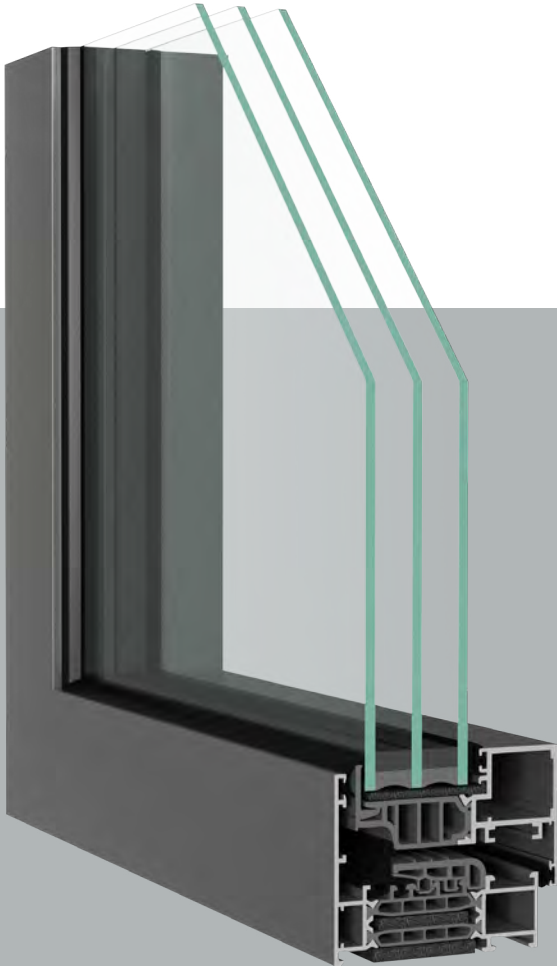
U_{factor} ≥ 0,13 Btu/h·ft²·F

MAX. ACOUSTIC PERFORMANCE

46 dB

OPENING STYLES

Tilt & Turn
Casement
Hopper / Awning
Fixed



*THE PHOTOS ARE FOR INFORMATIONAL PURPOSES ONLY.

OptiPro is an innovative system offering superior sealing, excellent energy efficiency and outstanding acoustic insulation. Adaptable to extreme conditions and with a reduced frame depth, it is perfectly suited for passive houses and provides maximum comfort. Its outstanding performance in AWS tests and easy assembly make it an ideal option for large-scale production. With a hidden hinge design option and highly secure hardware, it brings light and security to any space.



OptiPro

Entry Door

PRODUCT GEOMETRY

Frame depth: **3 1/8 in**
Sash depth: **3 1/8 in**
2 sealing gaskets

IGU OPTIONS

Double/Triple-Pane
maximum IGU thickness: **2 1/2 in**

THERMAL PERFORMANCE

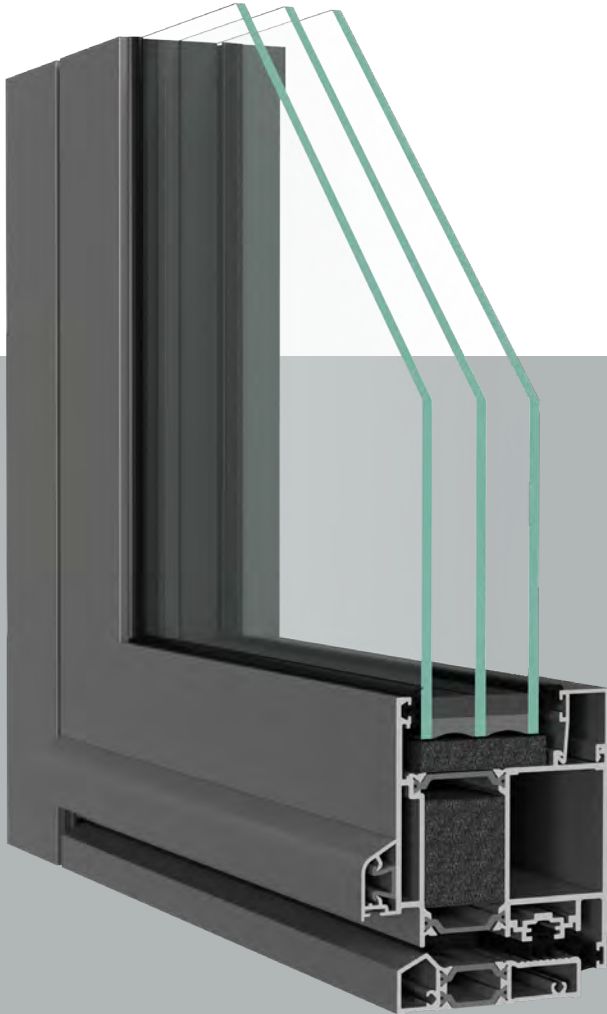
U_{factor} ≥ 0,14 Btu/h·ft²·F

MAX. ACOUSTIC PERFORMANCE

40 dB

OPENING STYLES

Inswing Door
Outswing Door



* THE PHOTOS ARE FOR INFORMATIONAL PURPOSES ONLY.

The OptiPro entry door system with improved thermal insulation is ideal for commercial premises and buildings. With outstanding performances in thermal and acoustic insulation, it is suitable for various applications including emergency exits, whilst offering the possibility of a 100° sash opening. Furthermore, OptiPro doors can be fitted with an applied decorative panel to hide the profiles and improve the door's aesthetic appearance.



OptiPro

Pivot Door

PRODUCT GEOMETRY

Frame depth: **3 1/8 in**
Sash depth: **3 1/8 in**
2 sealing gaskets

IGU OPTIONS

Double/Triple-Pane
maximum IGU thickness: **2 1/2 in**

THERMAL PERFORMANCE

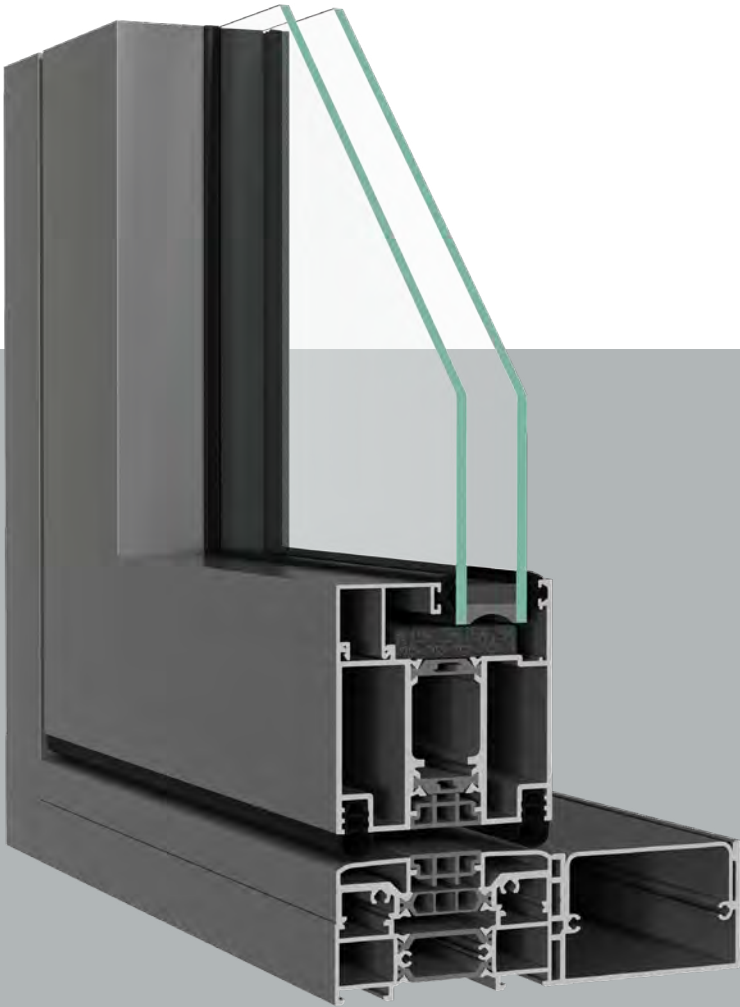
U_{factor} ≥ 0,15 Btu/h·ft²·F

MAX. ACOUSTIC PERFORMANCE

40 dB

OPENING STYLES

Pivot Door



*THE PHOTOS ARE FOR INFORMATIONAL PURPOSES ONLY.

This innovative entrance door aligns with the latest contemporary design trends. Engineered for large pivot openings, it is ideal for modern architectural projects, delivering exceptional thermal and acoustic performance while maintaining sleek and minimalist sightlines.



OptiPro

Lift & Slide

PRODUCT GEOMETRY

Frame depth: **7 1⁄8 in**
Sash depth: **3 1⁄8 in**
2 sealing gaskets

IGU OPTIONS

Double/Triple-Pane
maximum IGU thickness: **2 1⁄2 in**

THERMAL PERFORMANCE

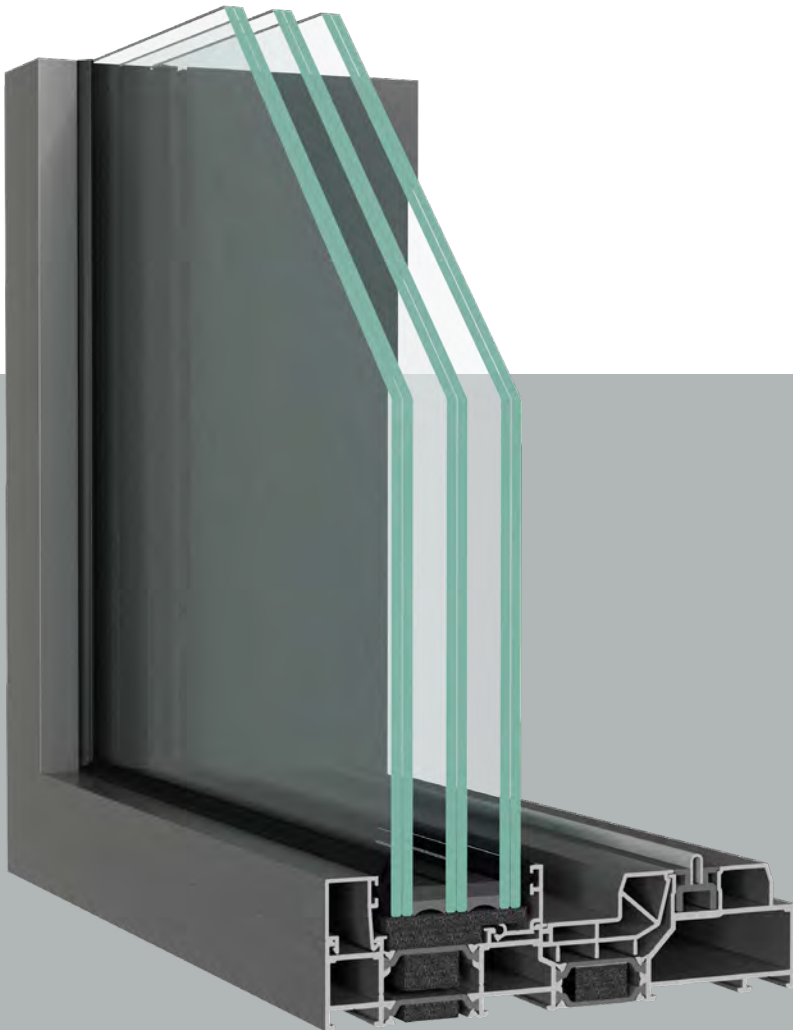
U_{factor} ≥ 0,11 Btu/h·ft²·F

MAX. ACOUSTIC PERFORMANCE

43 dB

OPENING STYLES

Multi-Slide Patio Door



* THE PHOTOS ARE FOR INFORMATIONAL PURPOSES ONLY.

The new OptiPro lift & slide system is designed to cover large openings while providing outstanding thermal insulation. With over 3 inches thick sashes and advanced polyamides, it achieves an impressive U factor value of just 0,11 Btu/h·ft²·F, ranking among the top-performing sliding systems in thermal efficiency. Additionally, the perimeter interlock profile is reduced to under 5 inches, maximizing the glazed surface whilst promoting the incidence of natural light within the interior of the premise.



OptiPro Plus

Triple Gasket Window

PRODUCT GEOMETRY

Frame depth: **3 in**
Sash depth: **3 ⅝ in**

IGU OPTIONS

Double/Triple-Pane
maximum IGU thickness: **2 ½ in**

THERMAL PERFORMANCE

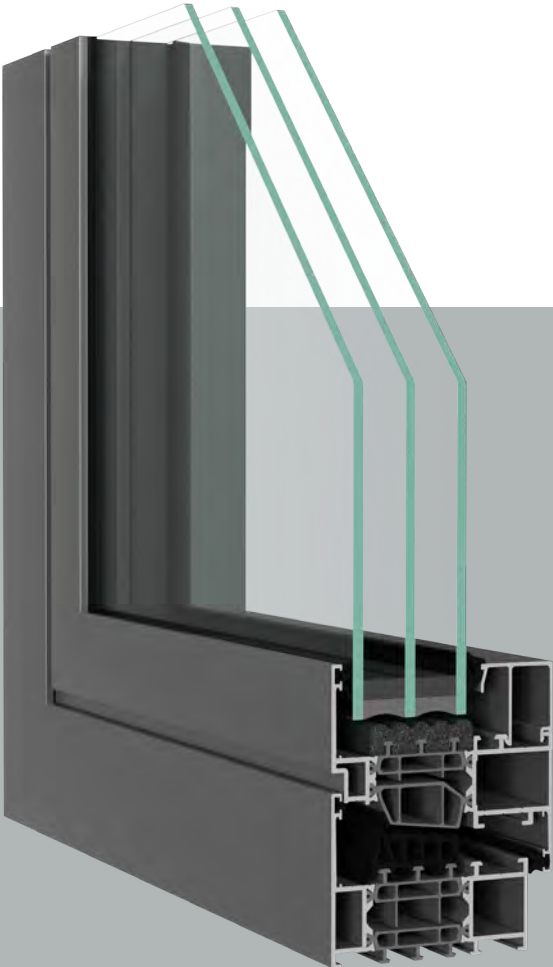
U_{factor} ≥ 0,15 Btu/h·ft²·F

MAX. ACOUSTIC PERFORMANCE

46 dB

OPENING STYLES

Tilt & Turn
Casement
Hopper / Awning
Fixed



*THE PHOTOS ARE FOR INFORMATIONAL PURPOSES ONLY.

OptiPro Plus combines multiple design variants with the highest performance levels in its category into one premium window system. Together with its broad design spectrum, this new generation of aluminum windows is also available in three thermal insulation variants, precisely adapted to any project requirement.



OptiPro Plus

Triple Gasket Window
Hidden Sash

PRODUCT GEOMETRY

Frame depth: **3 in**
Sash depth: **3 ¼ in**

IGU OPTIONS

Double/Triple-Pane
maximum IGU thickness: **2 ½ in**

THERMAL PERFORMANCE

U_{factor} ≥ 0,15 Btu/h·ft²·F

MAX. ACOUSTIC PERFORMANCE

46 dB

OPENING STYLES

Tilt & Turn
Casement
Hopper / Awning
Fixed



* THE PHOTOS ARE FOR INFORMATIONAL PURPOSES ONLY.

OptiPro Plus combines multiple design variants with the highest performance levels in its category into one premium window system. Together with its broad design spectrum, this new generation of aluminum windows is also available in three thermal insulation variants, precisely adapted to any project requirement.



OptiPro Plus

Entry Door

PRODUCT GEOMETRY

Frame depth: **3 in**
Sash depth: **3 ¾ in**
2 sealing gaskets

IGU OPTIONS

Double/Triple-Pane
maximum IGU thickness: **2 ½ in**

THERMAL PERFORMANCE

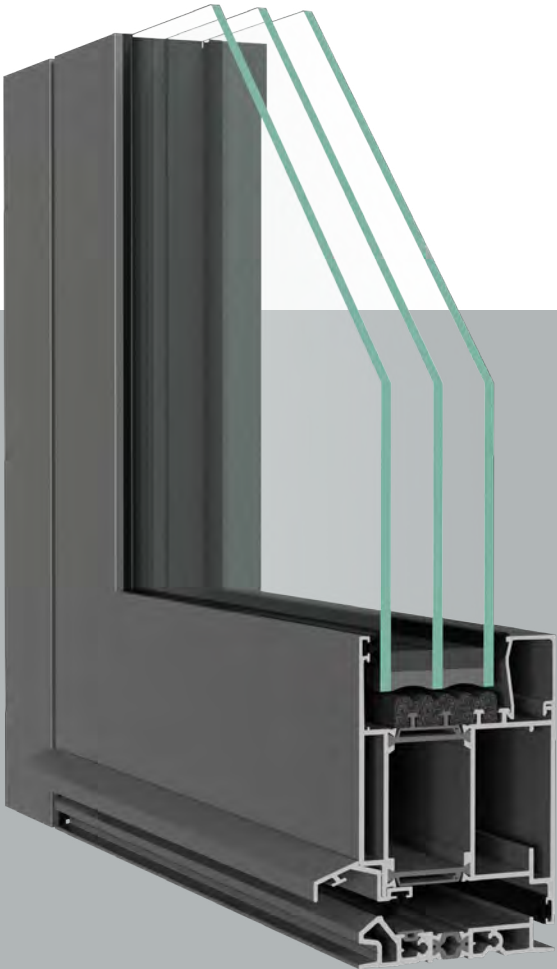
U_{factor} ≥ 0,15 Btu/h·ft²·F

MAX. ACOUSTIC PERFORMANCE

46 dB

OPENING STYLES

Inswing Door
Outswing Door



* THE PHOTOS ARE FOR INFORMATIONAL PURPOSES ONLY.

Choosing OptiPro Plus means enjoying top-tier performance in every detail. This premium door system combines high thermal efficiency, certified sustainability, and lifelong comfort encapsulated in a user-friendly design. With various design options and customizable features, you can create doors that blend seamlessly with your aesthetic, from concealed hardware to striking opening styles. Its robust aluminum construction can achieve Passive House energy standards, making it perfect for sustainable renovations and new builds.



OptiPro Plus

Pivot Door

PRODUCT GEOMETRY

Frame depth: **3 in**
Sash depth: **3 ¾ in**
2 sealing gaskets

IGU OPTIONS

Double/Triple-Pane
maximum IGU thickness: **2 ½ in**

THERMAL PERFORMANCE

U_{factor} ≥ 0,23 Btu/h·ft²·F

MAX. ACOUSTIC PERFORMANCE

46 dB

OPENING STYLES

Pivot Door



* THE PHOTOS ARE FOR INFORMATIONAL PURPOSES ONLY.

Choosing OptiPro Plus means enjoying top-tier performance in every detail. This premium door system combines high thermal efficiency, certified sustainability, and lifelong comfort encapsulated in a user-friendly design. With various design options and customizable features, you can create doors that blend seamlessly with your aesthetic, from concealed hardware to striking opening styles. The XL pivot option allows for the creation of doors more than 13 feet tall.



OptiPro Plus

Lift & Slide

PRODUCT GEOMETRY

Frame depth: 7 1⁄8 in
Sash depth: 3 in

IGU OPTIONS

Double/Triple-Pane
maximum IGU thickness: 2 1⁄2 in

THERMAL PERFORMANCE

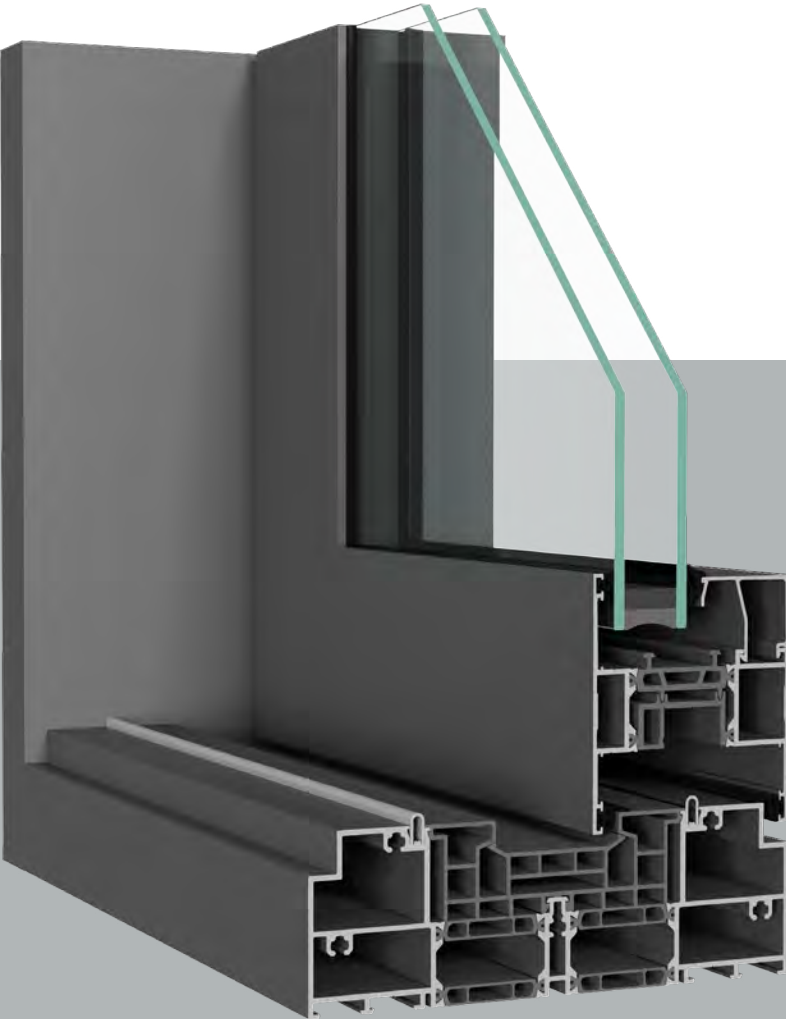
U_{factor} ≥ 0,14 Btu/h·ft²·F

MAX. ACOUSTIC PERFORMANCE

44 dB

OPENING STYLES

Multi-Slide Patio Door



*THE PHOTOS ARE FOR INFORMATIONAL PURPOSES ONLY.

Elevate your spaces with the next generation of high-performing sliding door system, designed to redefine functionality and aesthetics. This innovative solution seamlessly combines cutting-edge technology with exceptional design to deliver unmatched performance and style. With a clean, consistent and contemporary look, this lift & slide door system integrates perfectly into modern architectural designs, providing a sleek and sophisticated façade solution.



Hardware and Handles

Discover the perfect combination of style and functionality with our hardware and handles. Whether you're designing a sleek modern interior or adding charm to a timeless classic space, our curated selection offers solutions to suit every design need. From ergonomic shapes and bold geometric patterns to classic curved designs, our products are tailored to match your aesthetic.

Our wide range of finishes complements any décor, ensuring a seamless integration with your overall design. For minimalist spaces, our hidden handles and hinges provide a sleek, unobtrusive look, blending effortlessly with windows and doors.

OPTIPRO WINDOW HANDLES



OPTIPRO PLUS WINDOW HANDLES



Door Handles

Make a bold statement with our customizable pull bar designs, featuring clean lines, industrial aesthetics, or decorative details. Choose from single- or dual-mount configurations, with options like integrated LED lighting for dramatic effect and oversized designs for grand entryways.

CONFIGURATION OPTIONS

Dimensions

Standard dimensions are from 21 5/8 in to 74 3/4 in; On request, some pull bars can be made to custom dimensions.

Colors

The standard colors are stainless steel and black. For pull bars with integrated decor, wood options are available (walnut, golden oak, or dark oak), as well as glass inserts.

Smart configuration

Any style can be paired with a smart fingerprint locking system, integrated directly into the pull bar or on the side wall.



Accessories



Give your front door a smart upgrade. The latest generation of fingerprint scanners offers more than just a secure entry. Packed with intelligent features, it redefines convenience. Unlock your door effortlessly and safely with your fingerprint while enjoying enhanced functionality in everyday life. The sleek, modern access control system seamlessly integrates into your door, meeting the needs of today, tomorrow and the future.



ADVANTAGES

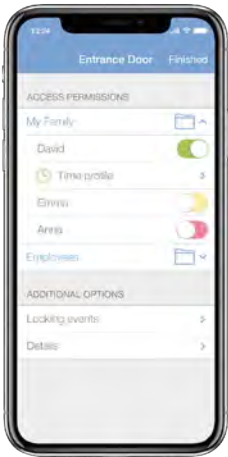
- The system upgrades your front door with a built-in fingerprint scanner, already integrated in our factory.
- Setup is quick via the ekey bionyx app.
- All basic functions are available in Local mode without an Internet connection.
- Plus mode offers remote opening and push notifications, (requires Internet and registration).
- The ekey bionyx app is intuitive and simplifies user and system management—no manual required.

Smart keys

Together with our top supplier, we are proud to present an electronic locking system that offers enhanced flexibility, complete control and a comprehensive overview of your entire locking setup. Compared to traditional mechanical locking systems, the smart keys developed by WinkHaus excel in their user-friendly design, robust security, and long-term cost savings.

APPLICATIONS:

- Homes:** blueCompact is perfect for smart homes and residential buildings;
- Businesses:** blueSmart is an ideal solution for growing businesses or commercial buildings; The system supports the integration of hundreds of cylinders and keys, providing scalability and efficiency.



ADVANTAGES

- Convenience**
Easily manage your entire locking system with an app
- Flexibility**
Grant acces or block lost keys at the flick of a switch
- More control**
All access events can be closely monitored
- Remote access**
Locking authorisations can be issued remotely
- Security**
Data is only stored on the masterkey
- Practicality**
Easy installation and flexible expansion



Masterkey



Cylinder



Keys, available in 5 colours



Glass represents approximately 80% of a joinery's surface. Optimedia equips its products with Saint Gobain Glass or Guardian glazings that meet thermal, acoustic and security requirements, whilst ensuring the desired indoor ambiance. Their winter-summer comfort function maintains a pleasant interior atmosphere throughout the year, with the sheen of their coating giving the space a touch of elegance.

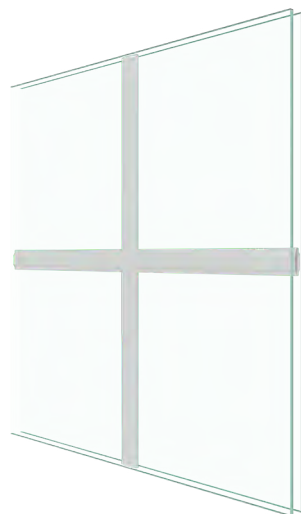
CONFIGURATION OPTIONS

For design purposes or to protect you from prying eyes, Optimedia offers you a wide range of decorative glass with a large number of models, textures and colors.

Also, for added style and elegance, you can choose between georgian and astragal bars. These can be of different sizes, colors and shapes, made of PVC or Aluminum.



Astragal Bars
1" x 3/8" or 1 5/8" x 3/8"



Georgian Bars
3/4" x 1/4" or 1" x 1/4"

Tempered glass: Optimedia ESG

ESG is a type of glass that, following the tempering process, shows a considerably higher resistance to mechanical and thermal stresses compared to ordinary glass (including laminated glass). In case of breakage, ESG glass fragments into small pieces with blunt edges. Its superior mechanical properties recommend it for large glazed elements.

USES:

Architectural: all types of interior or exterior windows, doors and glass assemblies, consisting of independent or linked elements, facades, glazed roofs, stairs and even glass floors;

Urban furniture: telephone booths, public transport stations, parapets;

Interior furniture: table tops, shower cabins, shelves, furniture.

WHY ESG (TEMPERED) GLASS?



ESG glass is 50% lighter than laminated glass, thus facilitating its transport and assembly whilst at the same time extending the joinery's life by reducing the load on the hardware.



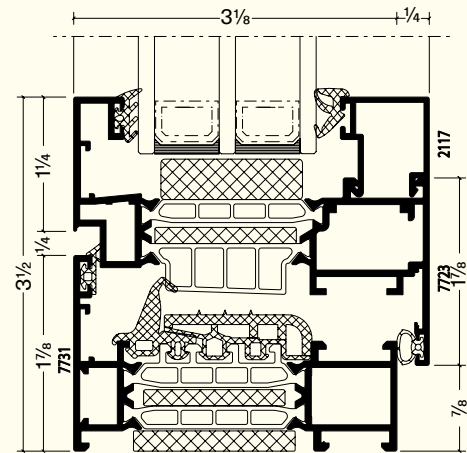
It is 5 times more resistant to tension, shocks and bending stresses compared to an ordinary or laminated glass of the same thickness.



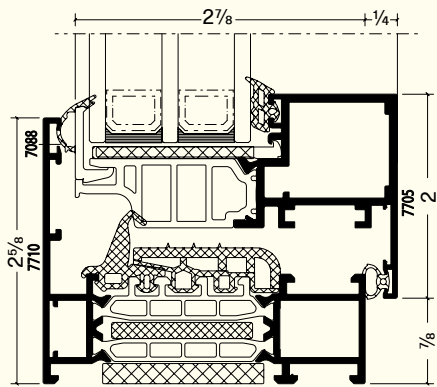
It reduces the risk of injury in case of breakage, by fragmenting into small, blunt pieces and limits the risk of break-ins.

Glass

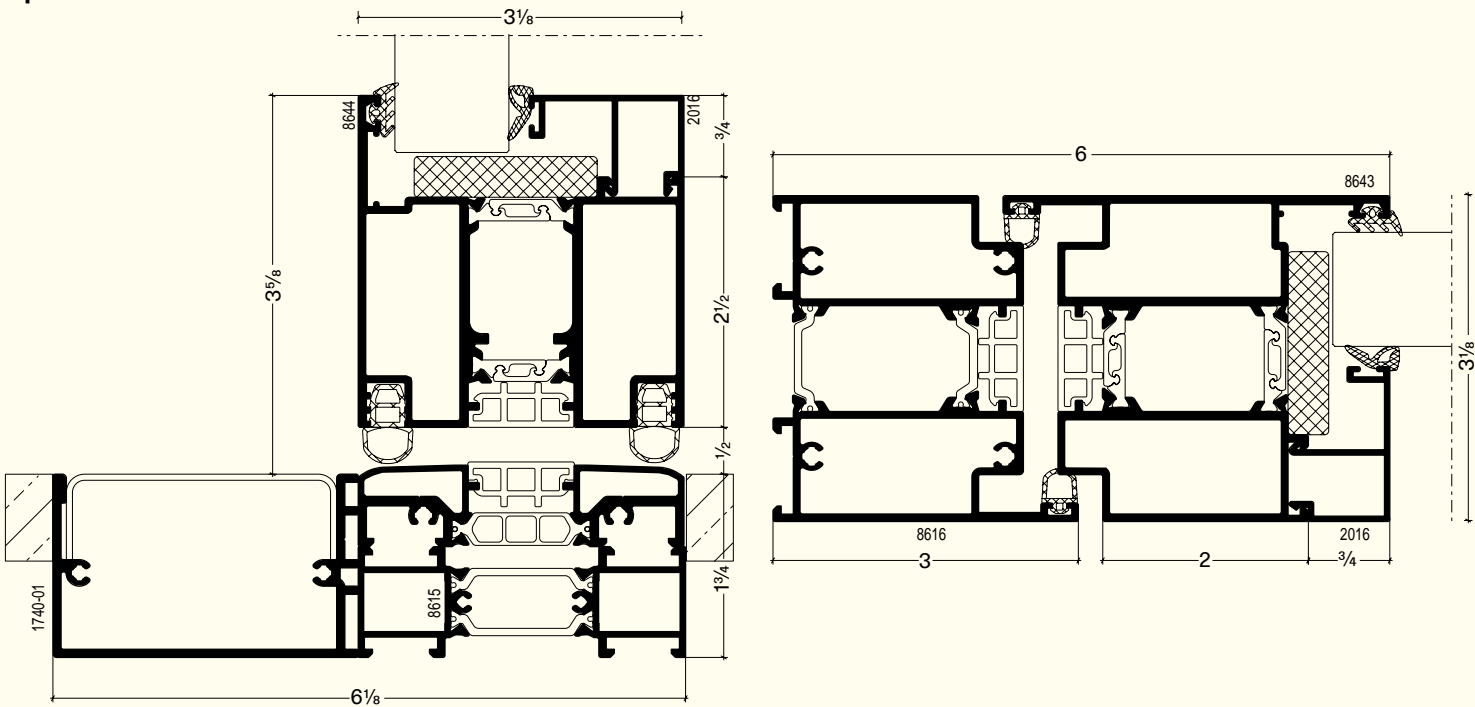
OptiPro Triple Gasket Window



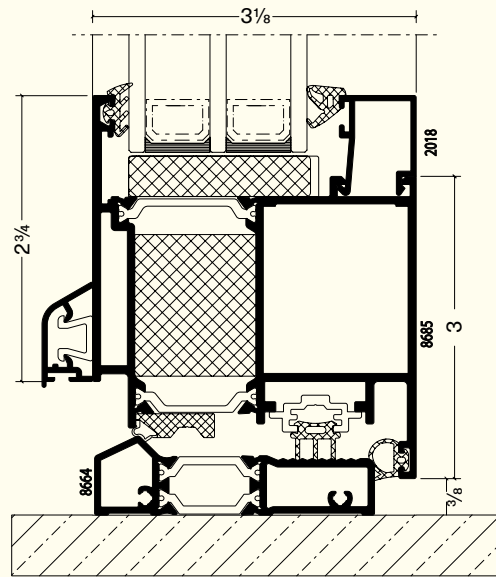
OptiPro Triple Gasket Window (Hidden Sash)



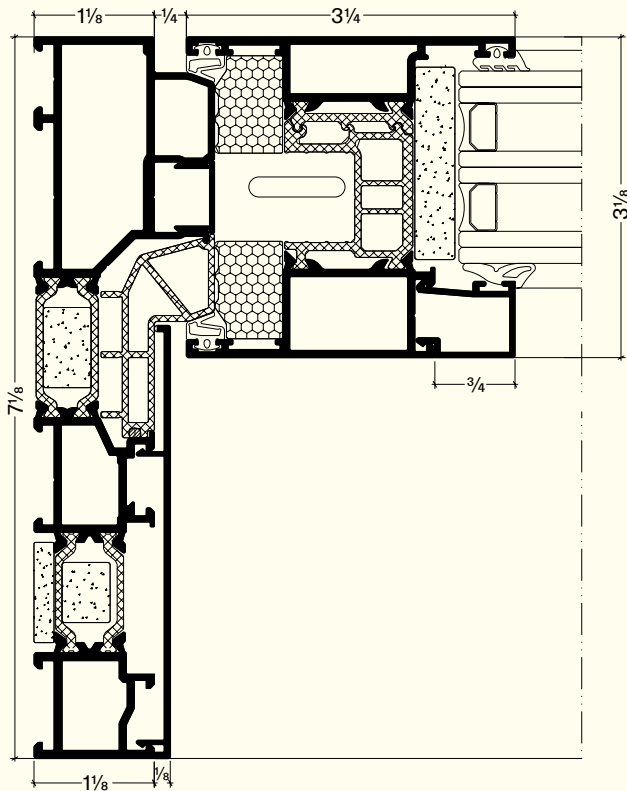
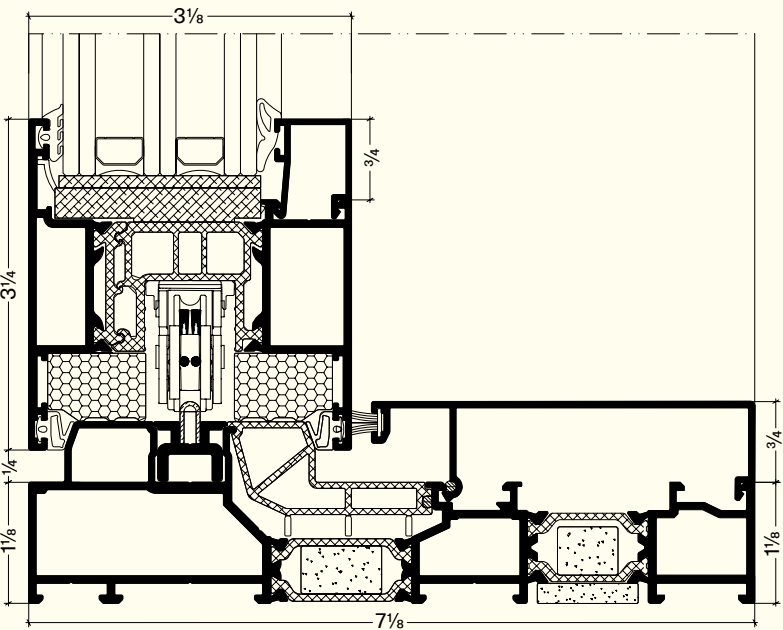
OptiPro Pivot Door



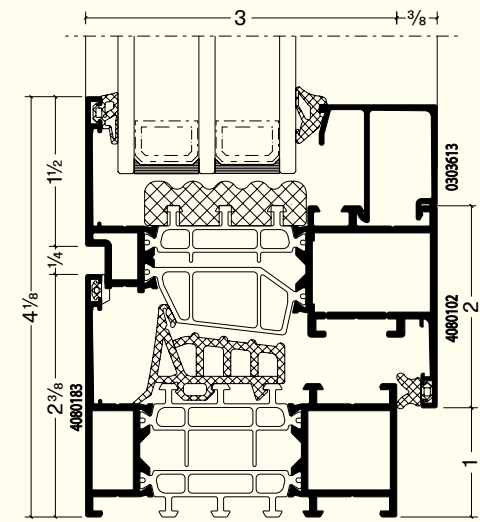
OptiPro Entry Door



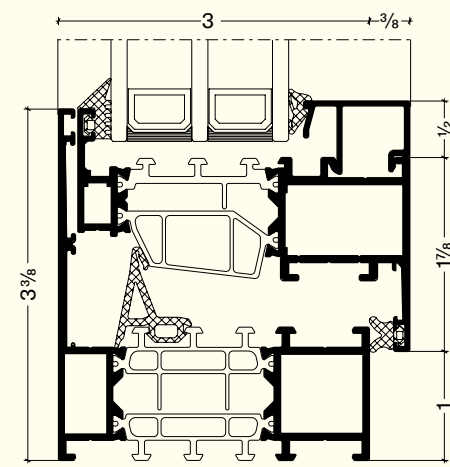
OptiPro Lift & Slide



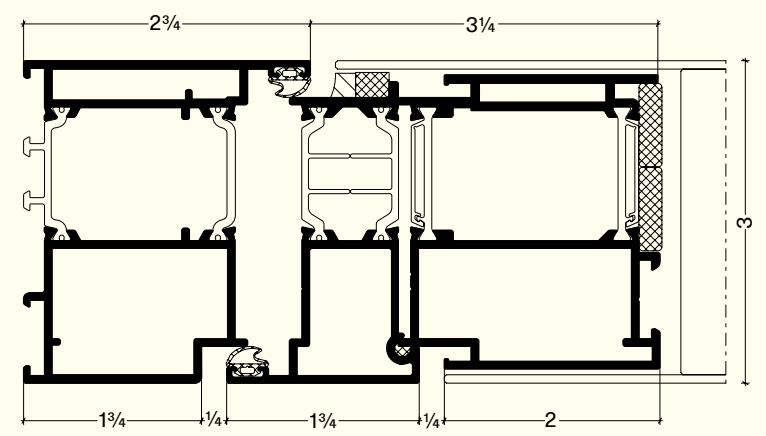
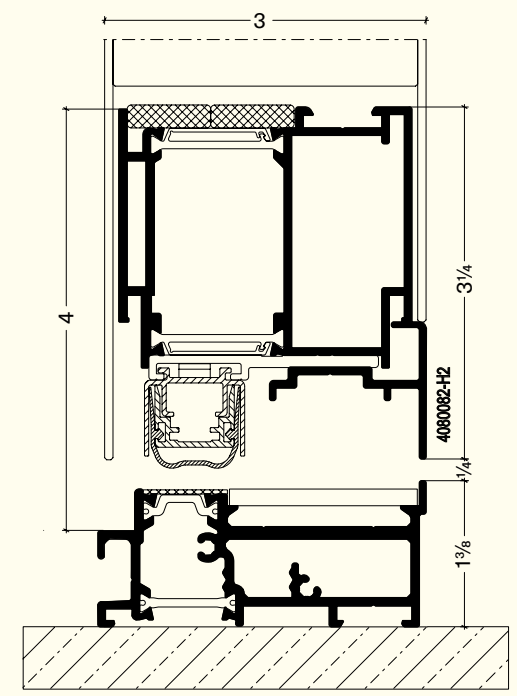
OptiPro Plus Triple Gasket Window



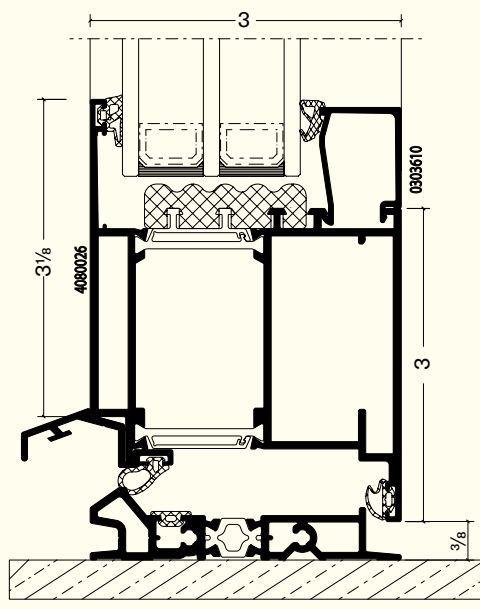
OptiPro Plus Triple Gasket Window



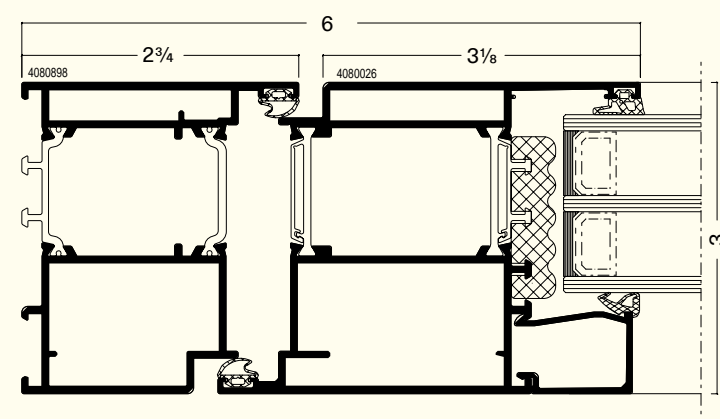
OptiPro Plus Pivot Door



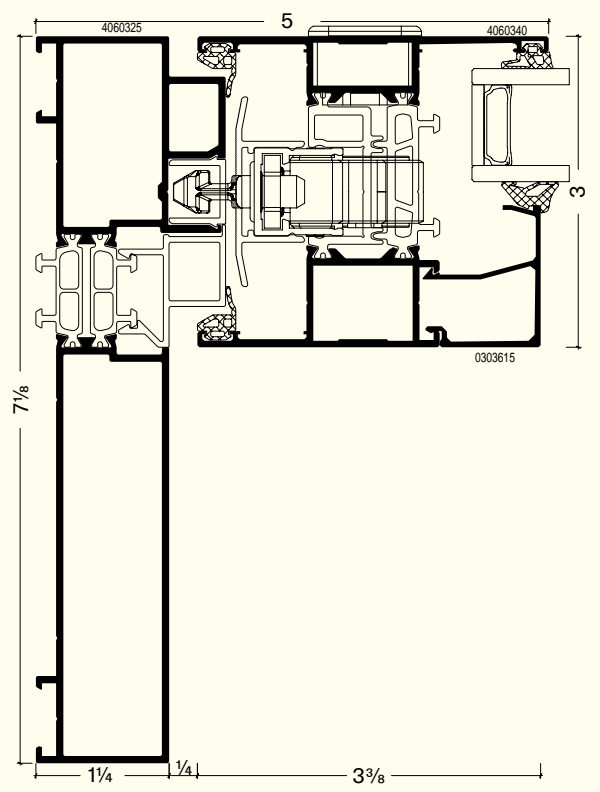
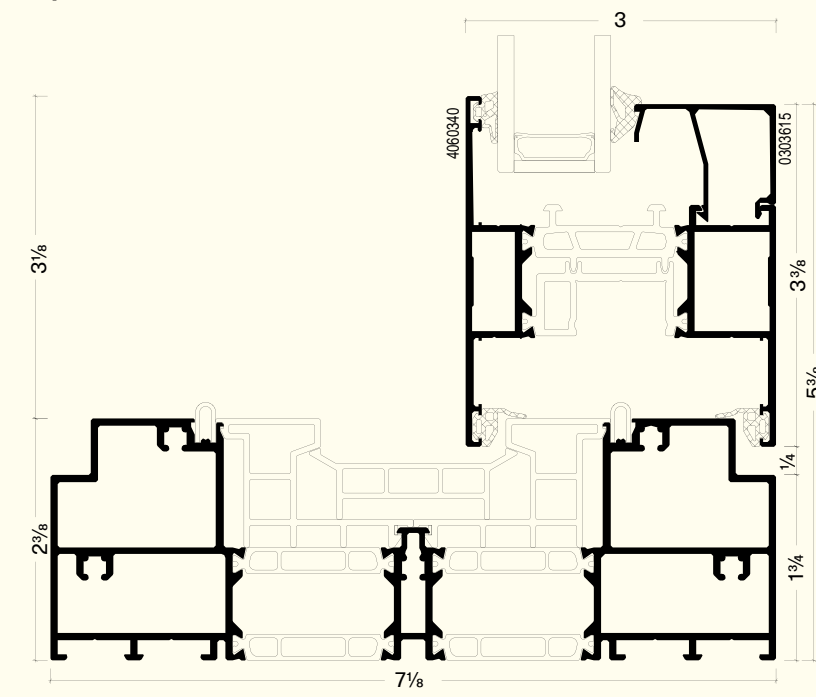
OptiPro Plus Entry Door



OptiPro Plus Entry Door



OptiPro Plus Lift & Slide



Join the Optimedia team

We are constantly recruiting agents to represent Optimedia. We export to all continents and offer extensive sales support and packages so you can be an exceptional dealer in your area.



Contact

 [optimedia](#)

 [Optimedia SRL](#)

 [optimedia.eu](#)

 [optimedia.eu](#)





S.C. OPTIMEDIA S.R.L.
Calea Sântandrei, nr. 38
410238, Oradea, România
+40 259 442 821
worldwide@optimedia.eu

optimedia.eu