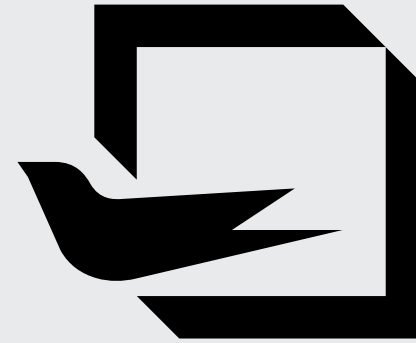


# OptiFusion



OPENING  
NEW  
HORIZONS

+31  
years of experience

+70.000  
square meters

+2.500  
partners



Optimedia has been producing PVC and Aluminum joineries since 1994, amassing an impressive and modern production system. Since 2006, we have started exporting our products currently having more than 2.500 B2B partners worldwide.

#### OUR VISION:

To be a leader in the production of PVC and Aluminum joineries, offering support to all our partners. To achieve this, we have kept to our core principles, maintaining the quality of our products and the relationships with our partners as top priorities.

#### OUR MISSION:

To produce windows and doors that have certified and proven characteristics, manufactured and delivered to the highest market standards.



GUARDIAN GLASS is one of the largest and most innovative glass manufacturers in the world. Founded in 1932 in Detroit, Michigan, the company operates on five continents, serving more than 160 countries.

**[guardianglass.com](http://guardianglass.com)**



SAINT-GOBAIN GLASS is the european leader in the production of construction glass. The factory in Călărași, Romania, has the most modern float glass production line in Europe. The thermal, acoustic and security performances of SAINT-GOBAIN glazings recommends them for the most creative and original architectural solutions.

**[saint-gobain-glass.com](http://saint-gobain-glass.com)**



WINKHAUS develops, manufactures and sells hardware for windows and doors, together with automatic closing, access and security systems. The german WINKHAUS group was founded in 1854, remaining a family business with over 2.000 partners worldwide.

**[winkhaus.com](http://winkhaus.com)**



# OptiFusion

Triple Gasket Window

PRODUCT GEOMETRY

Frame depth: **2 ¾ in**  
Sash depth: **3 ½ in**

IGU OPTIONS

**Double/Triple-Pane**  
maximum IGU thickness: **2 ¾ in**

THERMAL PERFORMANCE

**U<sub>factor</sub> ≥ 0,15 Btu/h·ft²·F**

MAX. ACOUSTIC PERFORMANCE

**44 dB**

OPENING STYLES

**Tilt & Turn**  
**Casement**  
**Hopper / Awning**  
**Fixed**



\* THE PHOTOS ARE FOR INFORMATIONAL PURPOSES ONLY.

The window system presenting hidden hardware and hinges is a versatile and cost-effective solution, offering remarkable thermal and acoustic efficiency whilst providing a truly minimalist and seamless look. Installation is easy and the profiles can be customized with straight or rounded glazing beads for design flexibility. AWS tests confirm the sealing and wind resistance, ensuring maximum protection in extreme conditions.



# OptiFusion

Triple Gasket Window  
Hidden Sash

PRODUCT GEOMETRY

Frame depth: 2 ¾ in  
Sash depth: 2 ¾ in

IGU OPTIONS

**Double/Triple-Pane**  
maximum IGU thickness: 1 ⅝ in

THERMAL PERFORMANCE

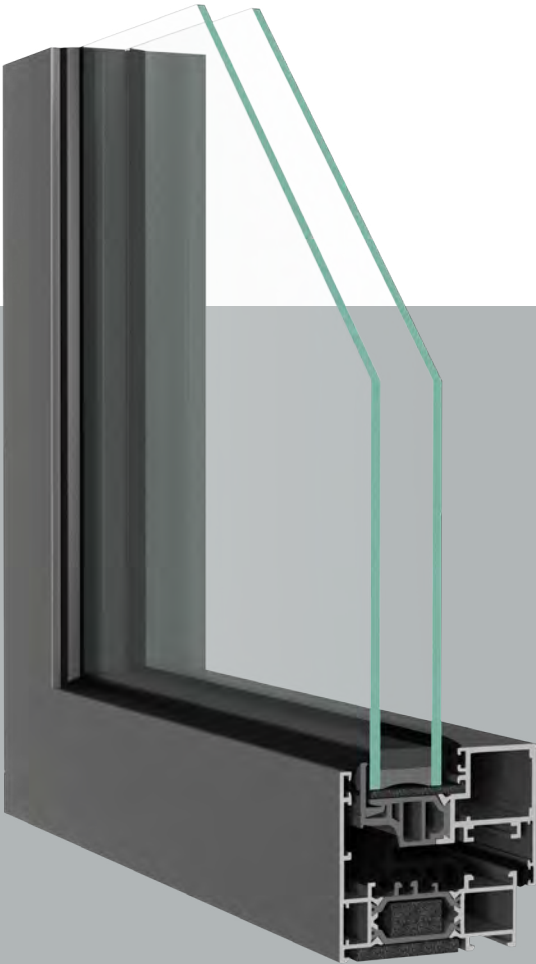
**U<sub>factor</sub> ≥ 0,15 Btu/h·ft²·F**

MAX. ACOUSTIC PERFORMANCE

**46 dB**

OPENING STYLES

**Tilt & Turn  
Casement  
Hopper / Awning  
Fixed**



\*THE PHOTOS ARE FOR INFORMATIONAL PURPOSES ONLY.

The new window system presenting hidden hardware and hinges is a versatile and cost-effective solution, offering remarkable thermal and acoustic efficiency whilst providing a truly minimalist and seamless look. Installation is easy and the profiles can be customized with straight or rounded glazing beads for design flexibility. The hidden sash variant maximizes brightness and energy efficiency. AWS tests confirm the sealing and wind resistance, ensuring maximum protection in extreme conditions.





# OptiFusion

## Entry Door

### PRODUCT GEOMETRY

Frame depth: 2 ¾ in  
Sash depth: 2 ¾ in  
2 sealing gasket

### IGU OPTIONS

**Double/Triple-Pane**  
maximum IGU thickness: 2 ⅝ in

### THERMAL PERFORMANCE

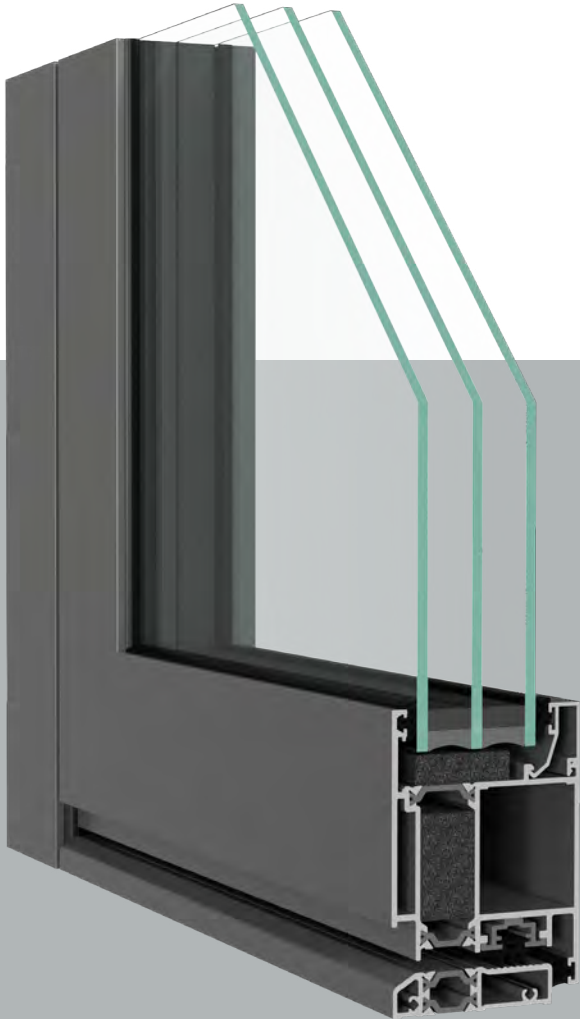
**U<sub>factor</sub> ≥ 0,16 Btu/h·ft<sup>2</sup>·F**

### MAX. ACOUSTIC PERFORMANCE

**38 dB**

### OPENING STYLES

**Inswing Door**  
**Outswing Door**



\*THE PHOTOS ARE FOR INFORMATIONAL PURPOSES ONLY.

The OptiFusion door system is designed for commercial premises and public buildings. It offers excellent thermal and acoustic performances thanks to its thermal insulation and energy efficiency. It can also be equipped with hidden hinges, as well as heavy-duty ones with the system being capable of 100° openings. The doors can be configured for emergency access or automatic openings.





# OptiFusion Heritage

Triple Gasket Window

PRODUCT GEOMETRY

Frame depth: **3 7⁄8 in**  
Sash depth: **3 5⁄8 in**

IGU OPTIONS

**Double/Triple-Pane**  
maximum IGU thickness: **2 1⁄8 in**

THERMAL PERFORMANCE

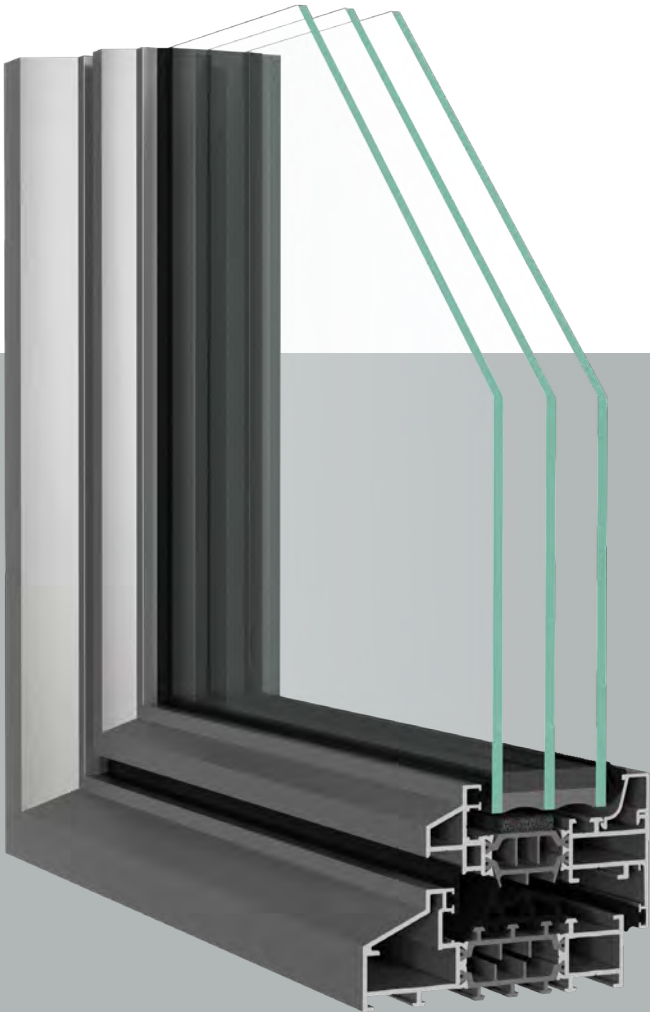
**U<sub>factor</sub> ≥ 0,17 Btu/h·ft²·F**

MAX. ACOUSTIC PERFORMANCE

**45 dB**

OPENING STYLES

**Tilt & Turn**  
**Casement**  
**Hopper / Awning**  
**Fixed**



\*THE PHOTOS ARE FOR INFORMATIONAL PURPOSES ONLY.

OptiFusion Heritage is the ideal solution for contemporary projects, offering a slim design and an outstanding ease of use. These durable aluminum windows and doors offer unlimited design freedom thanks to the multiple minimalist variants available. It is the perfect solution for adding a modern and energy-efficient element to any project.





# OptiFusion

Lift & Slide

PRODUCT GEOMETRY

Frame depth: 4 ½ / 4 ¾ in  
Sash depth: 2 in  
2 sealing gaskets

IGU OPTIONS

**Double/Triple-Pane**  
maximum IGU thickness: 1 ¾ in

THERMAL PERFORMANCE

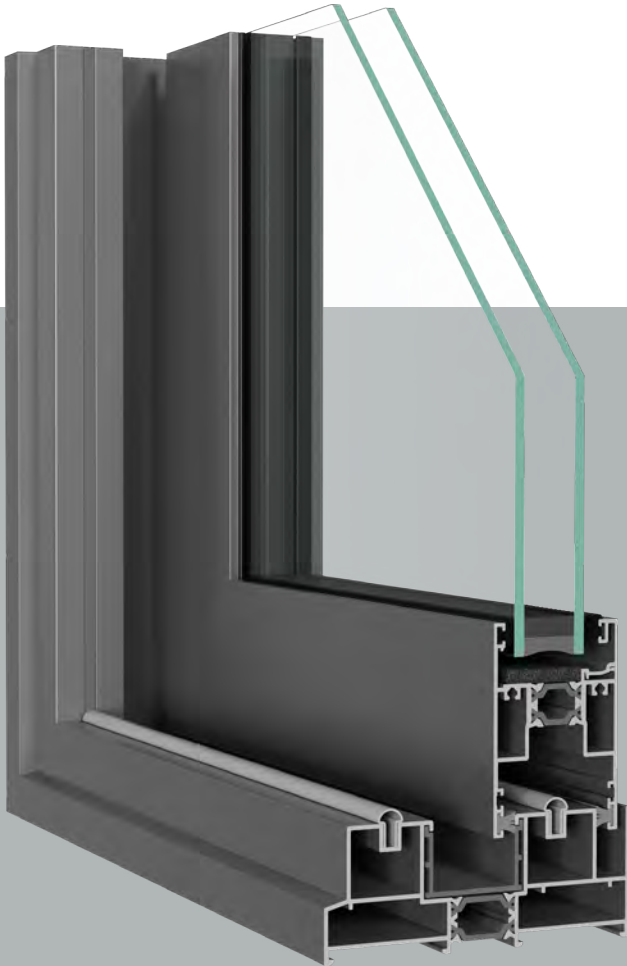
**U<sub>factor</sub> ≥ 0,18 Btu/h·ft²·F**

MAX. ACOUSTIC PERFORMANCE

**40 dB**

OPENING STYLES

**Multi-Slide Patio Door**



\* THE PHOTOS ARE FOR INFORMATIONAL PURPOSES ONLY.

Thanks to its minimalist aesthetics, with a central interlock under 2 inches wide, OptiFusion is a sliding windows and doors system specifically designed for large glazed areas that nevertheless improves a building's thermal and acoustic performances. The sashes can support loads up to 550 pounds, allowing generous dimensions of up to 98 in x 118 in to be created. OptiFusion is available in both sliding and lift & slide versions.



# Hardware and Handles

Discover the perfect combination of style and functionality with our hardware and handles. Whether you're designing a sleek modern interior or adding charm to a timeless classic space, our curated selection offers solutions to suit every design need. From ergonomic shapes and bold geometric patterns to classic curved designs, our products are tailored to match your aesthetic.

Our wide range of finishes complements any décor, ensuring a seamless integration with your overall design. For minimalist spaces, our hidden handles and hinges provide a sleek, unobtrusive look, blending effortlessly with windows and doors.

## OPTIFUSION WINDOW HANDLES



## OPTIFUSION HERITAGE WINDOW HANDLES



# Door Handles

Make a bold statement with our customizable pull bar designs, featuring clean lines, industrial aesthetics, or decorative details. Choose from single- or dual-mount configurations, with options like integrated LED lighting for dramatic effect and oversized designs for grand entryways.

## CONFIGURATION OPTIONS

### Dimensions

Standard dimensions are from 21 5/8 in to 74 3/4 in; On request, some pull bars can be made to custom dimensions.

### Colors

The standard colors are stainless steel and black. For pull bars with integrated decor, wood options are available (walnut, golden oak, or dark oak), as well as glass inserts.

### Smart configuration

Any style can be paired with a smart fingerprint locking system, integrated directly into the pull bar or on the side wall.

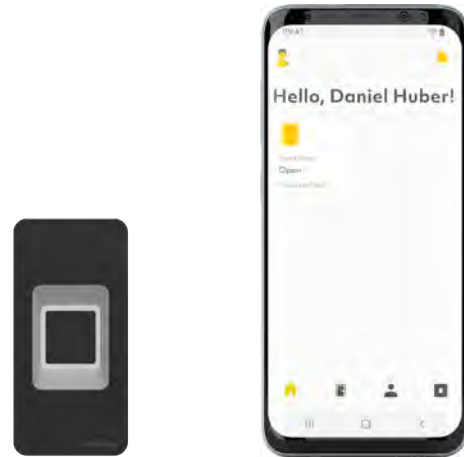




# Accessories



Give your front door a smart upgrade. The latest generation of fingerprint scanners offers more than just a secure entry. Packed with intelligent features, it redefines convenience. Unlock your door effortlessly and safely with your fingerprint while enjoying enhanced functionality in everyday life. The sleek, modern access control system seamlessly integrates into your door, meeting the needs of today, tomorrow and the future.



## ADVANTAGES

The system upgrades your front door with a built-in fingerprint scanner, already integrated in our factory.

Setup is quick via the ekey bionyx app.

All basic functions are available in Local mode without an Internet connection.

Plus mode offers remote opening and push notifications, (requires Internet and registration).

The ekey bionyx app is intuitive and simplifies user and system management—no manual required.

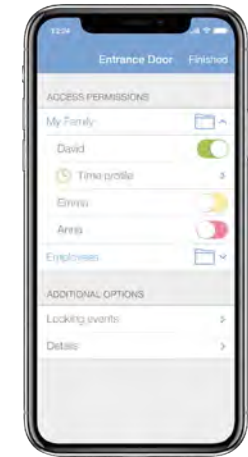
# Smart keys

Together with our top supplier, we are proud to present an electronic locking system that offers enhanced flexibility, complete control, and a comprehensive overview of your entire locking setup. Compared to traditional mechanical locking systems, the smart keys developed by WinkHaus excel in their user-friendly design, robust security and long-term cost savings.

## APPLICATIONS:

**Homes:** blueCompact is perfect for smart homes and residential buildings;

**Businesses:** blueSmart is an ideal solution for growing businesses and commercial buildings; The system supports the integration of hundreds of cylinders and keys, providing scalability and efficiency.



## ADVANTAGES

### Convenience

Easily manage your entire locking system with an app

### Flexibility

Grant access or block lost keys at the flick of a switch

### More control

All access events can be closely monitored

### Remote access

Locking authorisations can be issued remotely

### Security

Data is only stored on the masterkey

### Practicality

Easy installation and flexible expansion



Masterkey



Cylinder



Keys, available in 5 colours



Glass represents approximately 80% of a joinery's surface. Optimedia equips its products with Saint Gobain Glass or Guardian glazings that meet thermal, acoustic and security requirements, whilst ensuring the desired indoor ambiance. Their winter-summer comfort function maintains a pleasant interior atmosphere throughout the year, with the sheen of their coating giving the space a touch of elegance.

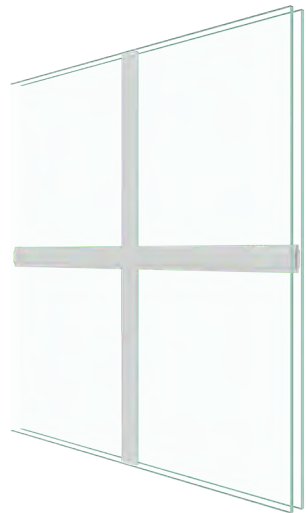
CONFIGURATION OPTIONS

For design purposes or to protect you from prying eyes, Optimedia offers you a wide range of decorative glass with a large number of models, textures and colors.

Also, for added style and elegance, you can choose between georgian and astragal bars. These can be of different sizes, colors and shapes, made of PVC or Aluminum.



Astragal Bars  
1" x 3/8" or 1 5/8" x 3/8"



Georgian Bars  
3/4in x 1/4in or 1in x 1/4in

Tempered glass:  
Optimedia ESG

ESG is a type of glass that, following the tempering process, shows a considerably higher resistance to mechanical and thermal stresses compared to ordinary glass (including laminated glass). In case of breakage, ESG glass fragments into small pieces with blunt edges. Its superior mechanical properties recommend it for large glazed elements.

USES:

**Architectural:** all types of interior or exterior windows, doors and glass assemblies, consisting of independent or linked elements, facades, glazed roofs, stairs and even glass floors;

**Urban furniture:** telephone booths, public transport stations, parapets;

**Interior furniture:** table tops, shower cabins, shelves, furniture.

WHY ESG (TEMPERED) GLASS?



ESG glass is 50% lighter than laminated glass, thus facilitating its transport and assembly whilst at the same time extending the joinery's life by reducing the load on the hardware.



It is 5 times more resistant to tension, shocks and bending stresses compared to an ordinary or laminated glass of the same thickness.

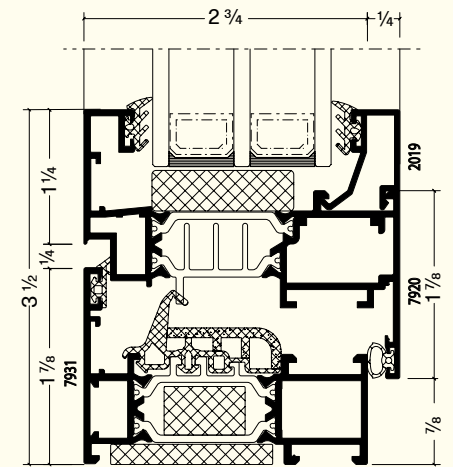


It reduces the risk of injury in case of breakage, by fragmenting into small, blunt pieces and limits the risk of break-ins.

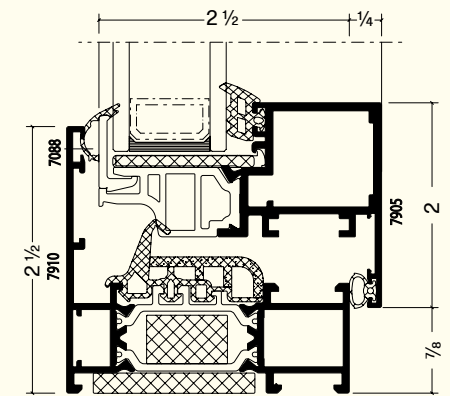
Glass



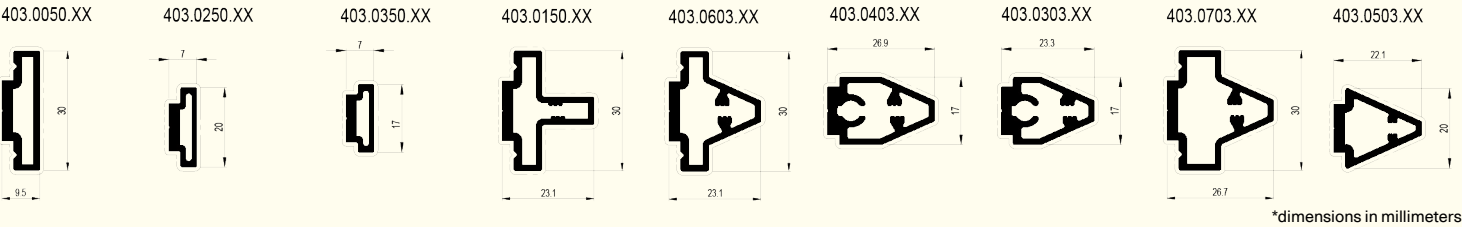
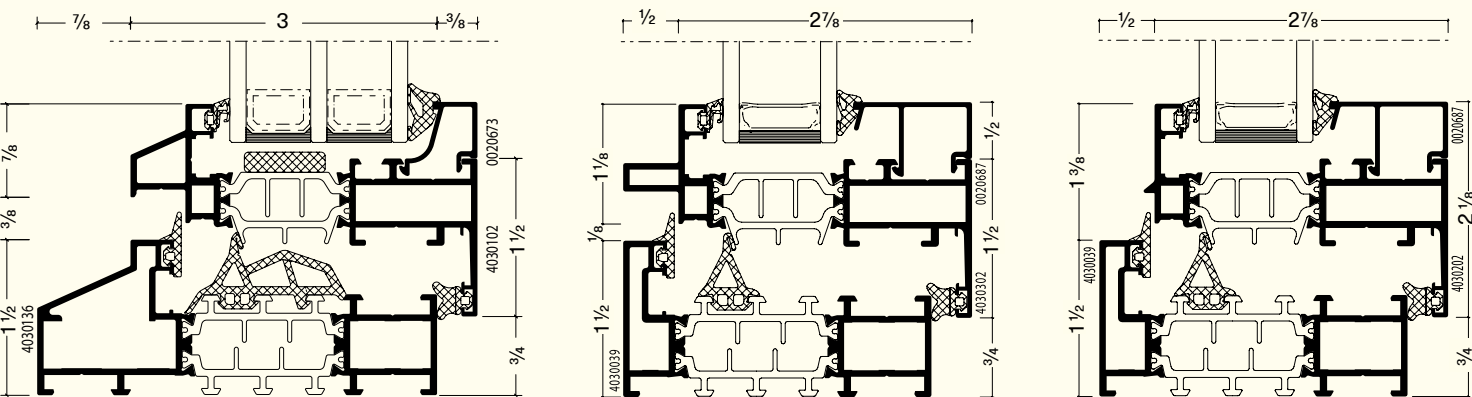
OptiFusion Triple Gasket Window



OptiFusion Triple Gasket Window (Hidden Sash)

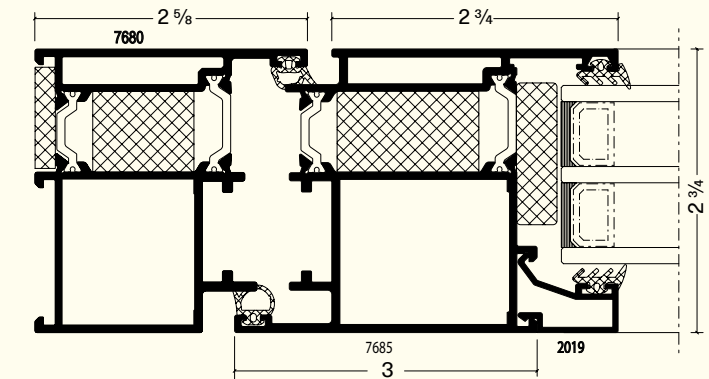
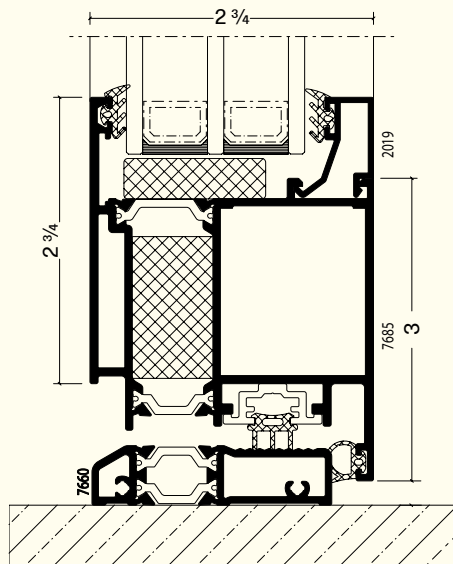


OptiFusion Heritage

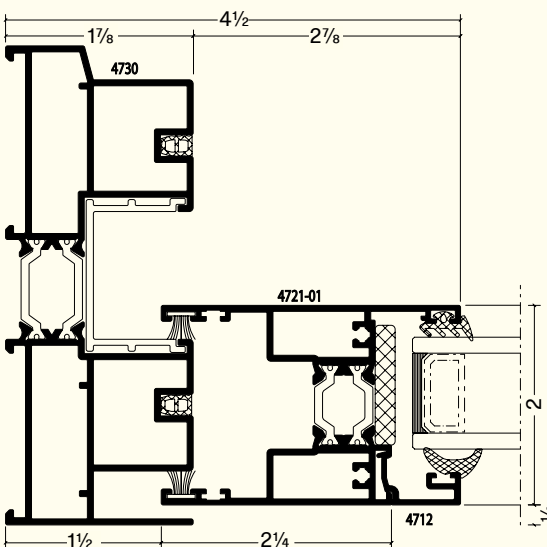
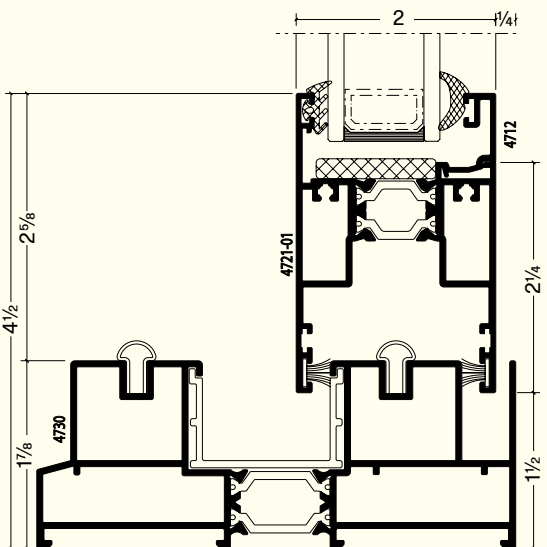


\*dimensions in millimeters

OptiFusion Entry Door



OptiFusion Lift & Slide



# Join the Optimedia team

We are constantly recruiting agents to represent Optimedia. We export to all continents and offer extensive sales support and packages so you can be an exceptional dealer in your area.



## Contact

 [optimedia](#)

 [Optimedia SRL](#)

 [optimedia.eu](#)

 [optimedia.eu](#)







S.C. OPTIMEDIA S.R.L.  
Calea Sântandrei, nr. 38  
410238, Oradea, România  
+40 259 442 821  
worldwide@optimedia.eu

**optimedia.eu**