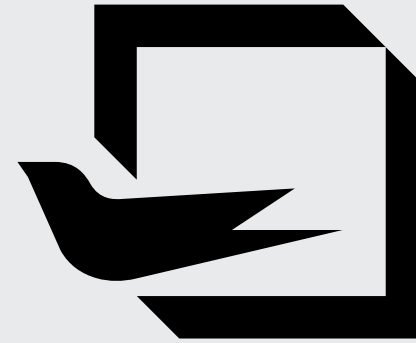


OptiLine



OPENING
NEW
HORIZONS

+31
years of experience

+70.000
square meters

+2.500
partners



Optimedia has been producing PVC and Aluminum joineries since 1994, amassing an impressive and modern production system. Since 2006, we have started exporting our products currently having more than 2.500 B2B partners worldwide.

OUR VISION:

To be a leader in the production of PVC and Aluminum joineries, offering support to all our partners. To achieve this, we have kept to our core principles, maintaining the quality of our products and the relationships with our partners as top priorities.

OUR MISSION:

To produce windows and doors that have certified and proven characteristics, manufactured and delivered to the highest market standards.



GUARDIAN GLASS is one of the largest and most innovative glass manufacturers in the world. Founded in 1932 in Detroit, Michigan, the company operates on five continents, serving more than 160 countries.

guardianglass.com



SAINT-GOBAIN GLASS is the european leader in the production of construction glass. The factory in Călărași, Romania, has the most modern float glass production line in Europe. The thermal, acoustic and security performances of SAINT-GOBAIN glazings recommends them for the most creative and original architectural solutions.

saint-gobain-glass.com



WINKHAUS develops, manufactures and sells hardware for windows and doors, together with automatic closing, access and security systems. The german WINKHAUS group was founded in 1854, remaining a family business with over 2.000 partners worldwide.

winkhaus.com

OptiLine

Casement

PRODUCT GEOMETRY

Frame depth: 2 3⁄8 in
Sash depth: 2 5⁄8 in

IGU OPTIONS

Double/Triple-Pane
maximum IGU thickness: 1 3⁄4 in

THERMAL PERFORMANCE

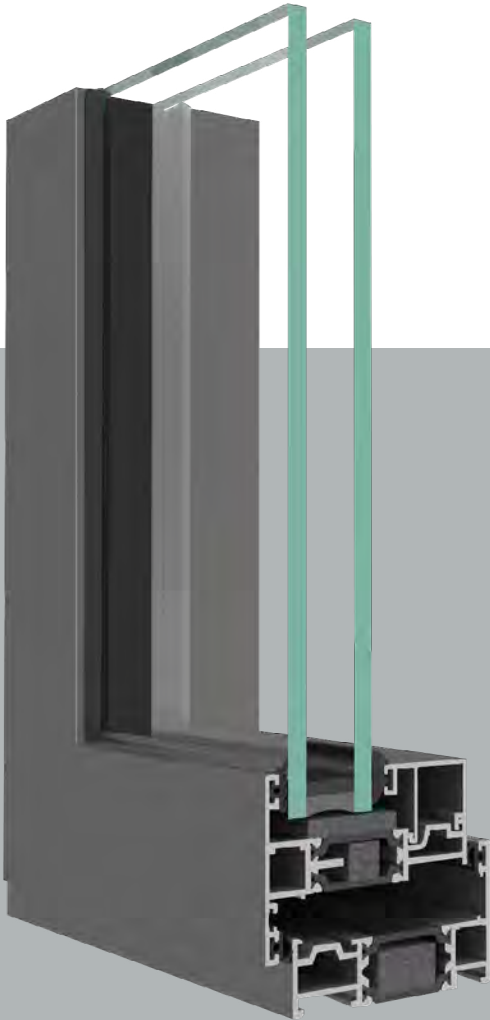
U_{factor} ≥ 0,16 Btu/h·ft²·F

MAX. ACOUSTIC PERFORMANCE

45 dB

OPENING STYLES

**Side-Hung Outwad
Top-Hung Outward**



*THE PHOTOS ARE FOR INFORMATIONAL PURPOSES ONLY

The system is designed to accommodate both side-hung and top-hung outward openings. With a 1 1⁄4 in thermal break zone and a U factor as low as 0.16, the system is perfect for any project. The window also offers the possibility of incorporating security hardware and features concealed hinges for a sleek appearance.



OptiLine

Sliding Window

PRODUCT GEOMETRY

Frame depth: 4 ¾ in
Sash depth: 1 ½ in
2 sealing gaskets

IGU OPTIONS

Double/Triple-Pane
maximum IGU thickness: 1 ½ in

THERMAL PERFORMANCE

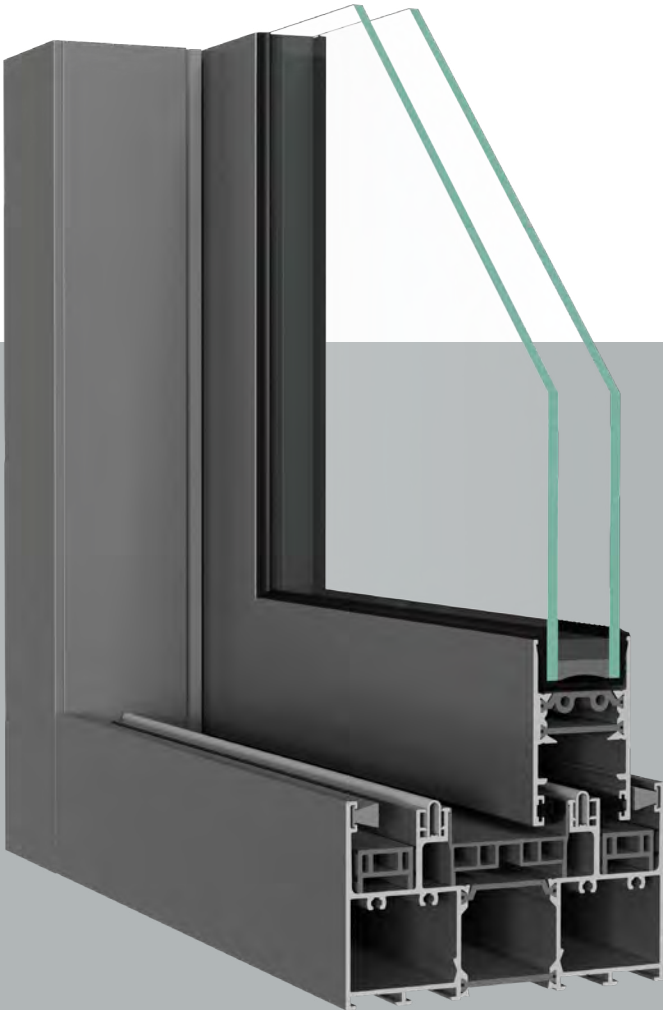
U_{factor} ≥ 0,25 Btu/h·ft²·F

MAX. ACOUSTIC PERFORMANCE

40 dB

OPENING STYLES

Multi-Slide Window



*THE PHOTOS ARE FOR INFORMATIONAL PURPOSES ONLY

Our OptiLine Sliding window is an extremely thin solution offering great thermal insulation together with improved comfort and appearance. With a minimalist look, these premium sliding windows optimize the natural light passing into the room and offer exceptional panoramic views. Thanks to this innovative system, the indoor experience becomes brighter and more connected to the outside enviroment.



OptiLine

Sliding

PRODUCT GEOMETRY

Frame depth: 2 ¾ in
Sash depth: 1 ⅞ in
with brushes

IGU OPTIONS

Double/Triple-Pane
maximum IGU thickness: 1 ¾ in

THERMAL PERFORMANCE

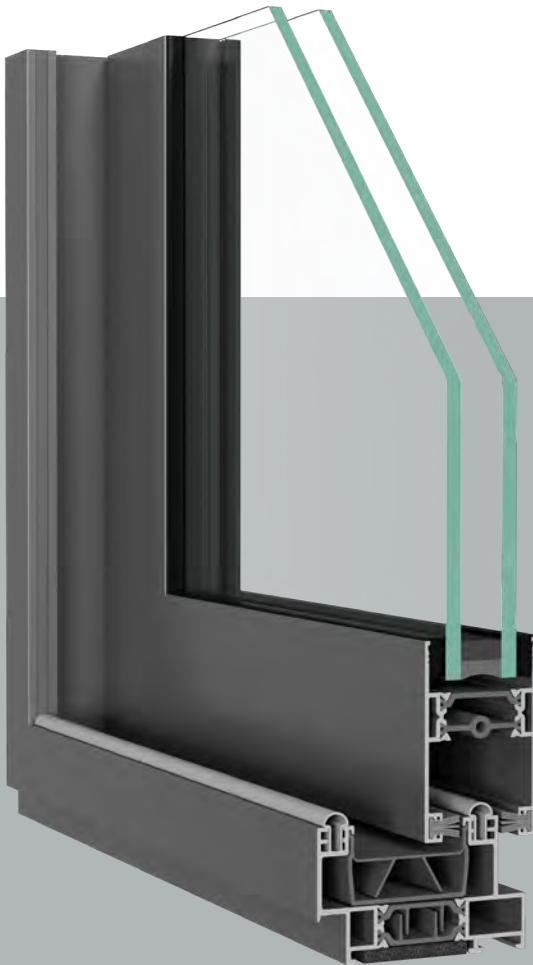
U_{factor} ≥ 0,21 Btu/h·ft²·F

MAX. ACOUSTIC PERFORMANCE

40 dB

OPENING STYLES

Multi-Slide Window
Multi-Slide Door



* THE PHOTOS ARE FOR INFORMATIONAL PURPOSES ONLY

The OptiLine Sliding windows and doors system, with its minimalist design and straight lines, has a visible sash plus frame area amounting to only 4 ⅞ in. It stands out through the possibility of using insulating glass units up to 1 ¾ in thick which significantly improve thermal and acoustic performances. Each sash can support loads of up to 530 pounds, facilitating the creation of large elements up to 86 in x 102 in. It is an excellent choice for projects aimed at enhancing light and efficiency, both indoors and outdoors.



OptiLine

Interior Window

PRODUCT GEOMETRY

Frame depth: 1 5⁄8 in
Sash depth: 1 7⁄8 in
2 sealing gaskets

IGU OPTIONS

Double-Pane
maximum IGU thickness: 1 in

THERMAL PERFORMANCE

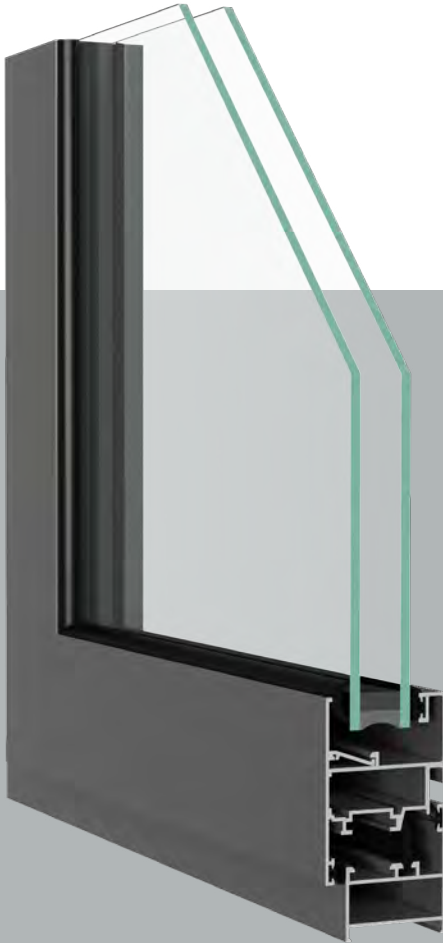
U_{factor} ≥ 0,35 Btu/h·ft²·F

MAX. ACOUSTIC PERFORMANCE

39 dB

OPENING STYLES

**Tilt & Turn
Casement
Hopper / Awning
Fixed**



* THE PHOTOS ARE FOR INFORMATIONAL PURPOSES ONLY

The OptiLine Interior window is a hinged windows and doors system distinguished by its 1 5⁄8 in deep frame and the reduced overall thickness resulting from it. It therefore offers multiple advantages in terms of aesthetics and functionality. Nevertheless, the system gives you multiple options to improve security, with dedicated hardware and hidden hinges, whilst maintaining a clean and modern look.



OptiLine

Interior Door

PRODUCT GEOMETRY

Frame depth: 1 ¾ in
Sash depth: 1 ¾ in
2 sealing gaskets

IGU OPTIONS

Double-Pane
maximum IGU thickness: 1 ½ in

THERMAL PERFORMANCE

U_{factor} ≥ 0,41 Btu/h·ft²·F

MAX. ACOUSTIC PERFORMANCE

38 dB

OPENING STYLES

Inswing Door
Outswing Door
Automatic Door



* THE PHOTOS ARE FOR INFORMATIONAL PURPOSES ONLY

This coplanar door system, with a 1 ¾ in frame depth is ideal for both commercial and residential buildings. It is configurable with durable double or triple flag hinges that support up to 400 pounds per sash, or as an automatic door, a space-efficient solution designed for high-traffic areas like offices and hospitals.



OptiLine

Interior Slider

PRODUCT GEOMETRY

Frame depth: 1 5⁄8 / 2 3⁄4 / 2 3⁄8 / 2 3⁄4 in
Sash depth: 1 in
with brushes

IGU OPTIONS

Double-Pane
maximum IGU thickness: 5⁄8 in

THERMAL PERFORMANCE

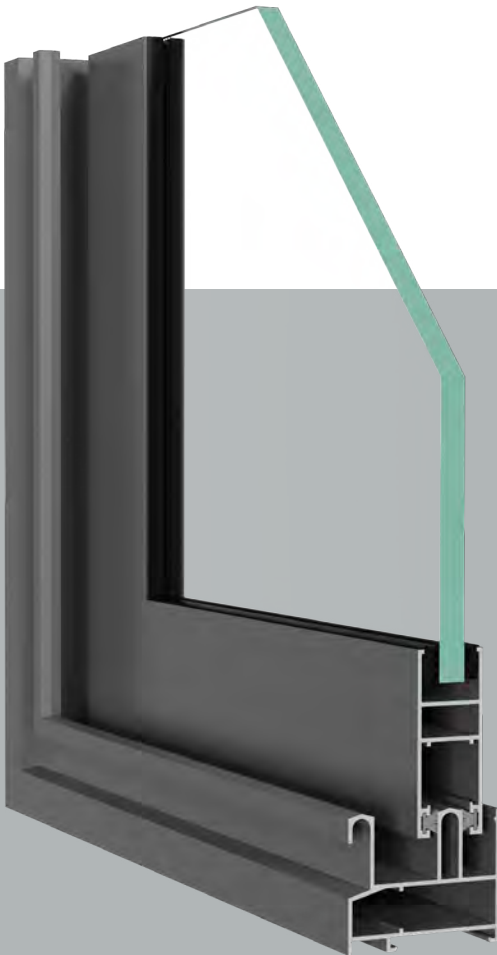
U_{factor} ≥ 0,51 Btu/h·ft²·F

MAX. ACOUSTIC PERFORMANCE

33 dB

OPENING STYLES

Multi-Slide Window
Multi-Slide Door



* THE PHOTOS ARE FOR INFORMATIONAL PURPOSES ONLY

Our OptiLine Interior Slider is an innovative sliding system for a unique and versatile design. It provides flexibility in shape and appearance allowing for straight, angled or curved sashes. It is therefore adaptable for various projects ensuring a perfect fit between appearance and functionality.





Discover the perfect combination of style and functionality with our hardware and handles. Whether you're designing a sleek modern interior or adding charm to a timeless classic space, our curated selection offers solutions to suit every design need. From ergonomic shapes and bold geometric patterns to classic curved designs, our products are tailored to match your aesthetic.

Our wide range of finishes complements any décor, ensuring a seamless integration with your overall design. For minimalist spaces, our hidden hinges provide a sleek, unobtrusive look, blending effortlessly with windows and doors.

OPTILINE WINDOWS HANDLES



OPTILINE SLIDING WINDOW HANDLES



Hardware and Handles

Door Handles

Make a bold statement with our customizable pull bar designs, featuring clean lines, industrial aesthetics, or decorative details. Choose from single- or dual-mount configurations, with options like integrated LED lighting for dramatic effect and oversized designs for grand entryways.

CONFIGURATION OPTIONS

Dimensions
Standard dimensions are from 21 5⁄8 in to 74 3⁄4 in; On request, some pull bars can be made to custom dimensions.

Colors
The standard colors are stainless steel and black. For pull bars with integrated decor, wood options are available (walnut, golden oak, or dark oak), as well as glass inserts.

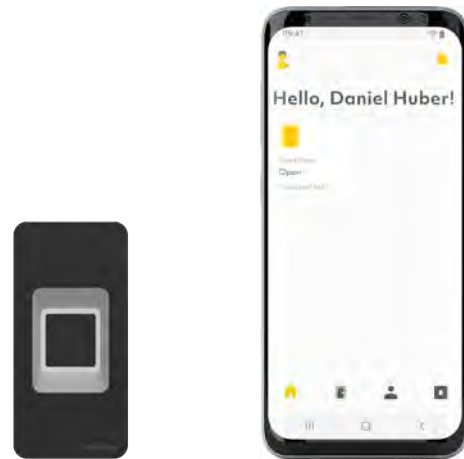
Smart configuration
Any style can be paired with a smart fingerprint locking system, integrated directly into the pull bar or on the side wall.



Accessories



Give your front door a smart upgrade. The latest generation of fingerprint scanners offers more than just a secure entry. Packed with intelligent features, it redefines convenience. Unlock your door effortlessly and safely with your fingerprint while enjoying enhanced functionality in everyday life. The sleek, modern access control system seamlessly integrates into your door, meeting the needs of today, tomorrow and the future.



ADVANTAGES

The system upgrades your front door with a built-in fingerprint scanner, already integrated in our factory.

Setup is quick via the ekey bionyx app.

All basic functions are available in Local mode without an Internet connection.

Plus mode offers remote opening and push notifications, (requires Internet and registration).

The ekey bionyx app is intuitive and simplifies user and system management—no manual required.

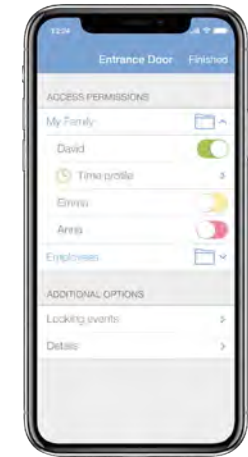
Smart keys

Together with our top supplier, we are proud to present an electronic locking system that offers enhanced flexibility, complete control, and a comprehensive overview of your entire locking setup. Compared to traditional mechanical locking systems, the smart keys developed by WinkHaus excel in their user-friendly design, robust security and long-term cost savings.

APPLICATIONS:

Homes: blueCompact is perfect for smart homes and residential buildings;

Businesses: blueSmart is an ideal solution for growing businesses and commercial buildings; The system supports the integration of hundreds of cylinders and keys, providing scalability and efficiency.



ADVANTAGES

Convenience

Easily manage your entire locking system with an app

Flexibility

Grant access or block lost keys at the flick of a switch

More control

All access events can be closely monitored

Remote access

Locking authorisations can be issued remotely

Security

Data is only stored on the masterkey

Practicality

Easy installation and flexible expansion



Masterkey



Cylinder



Keys, available in 5 colours



Glass represents approximately 80% of a joinery's surface. Optimedia equips its products with Saint Gobain Glass or Guardian glazings that meet thermal, acoustic and security requirements, whilst ensuring the desired indoor ambiance. Their winter-summer comfort function maintains a pleasant interior atmosphere throughout the year, with the sheen of their coating giving the space a touch of elegance.

CONFIGURATION OPTIONS

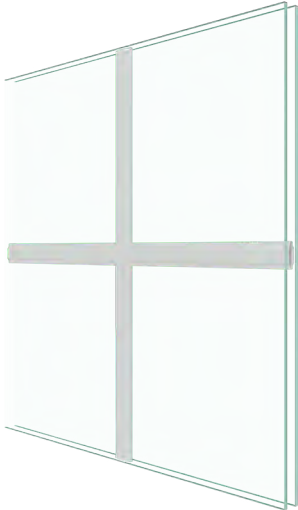
For design purposes or to protect you from prying eyes, Optimedia offers you a wide range of decorative glass with a large number of models, textures and colors.

Also, for added style and elegance, you can choose between georgian and astragal bars. These can be of different sizes, colors and shapes, made of PVC or Aluminum.

Glass



Astragal Bars
1" x 3/8" or 1 5/8" x 3/8"



Georgian Bars
3/4" x 1/4" or 1" x 1/4"

Tempered glass:
Optimedia ESG

ESG is a type of glass that, following the tempering process, shows a considerably higher resistance to mechanical and thermal stresses compared to ordinary glass (including laminated glass). In case of breakage, ESG glass fragments into small pieces with blunt edges. Its superior mechanical properties recommend it for large glazed elements.

USES:

Architectural: all types of interior or exterior windows, doors and glass assemblies, consisting of independent or linked elements, facades, glazed roofs, stairs and even glass floors;

Urban furniture: telephone booths, public transport stations, parapets;

Interior furniture: table tops, shower cabins, shelves, furniture.

WHY ESG (TEMPERED) GLASS?



ESG glass is 50% lighter than laminated glass, thus facilitating its transport and assembly whilst at the same time extending the joinery's life by reducing the load on the hardware.

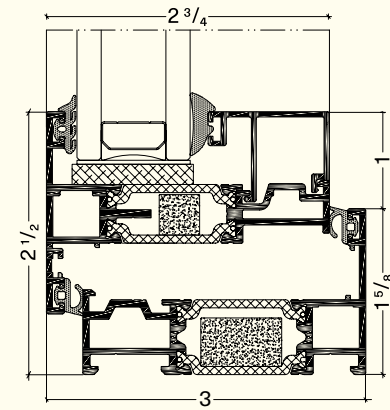


It is 5 times more resistant to tension, shocks and bending stresses compared to an ordinary or laminated glass of the same thickness.

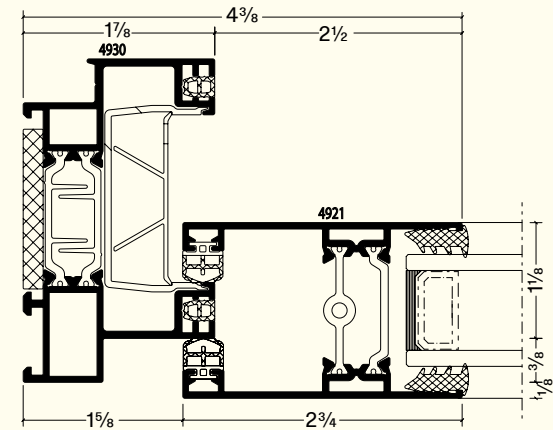
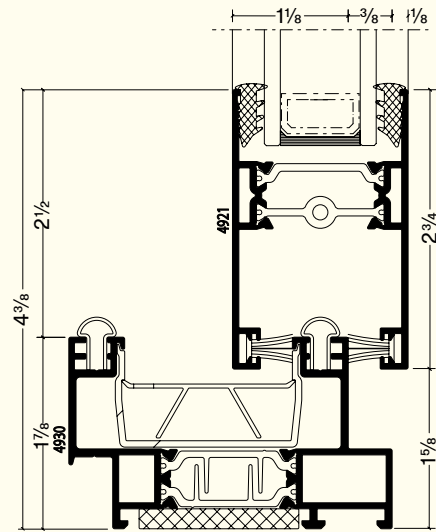


It reduces the risk of injury in case of breakage, by fragmenting into small, blunt pieces and limits the risk of break-ins.

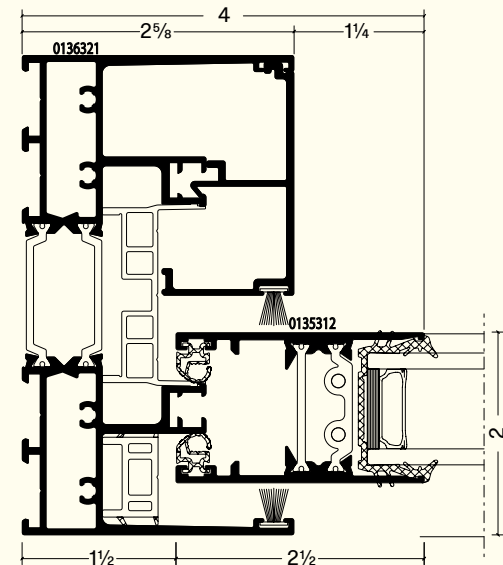
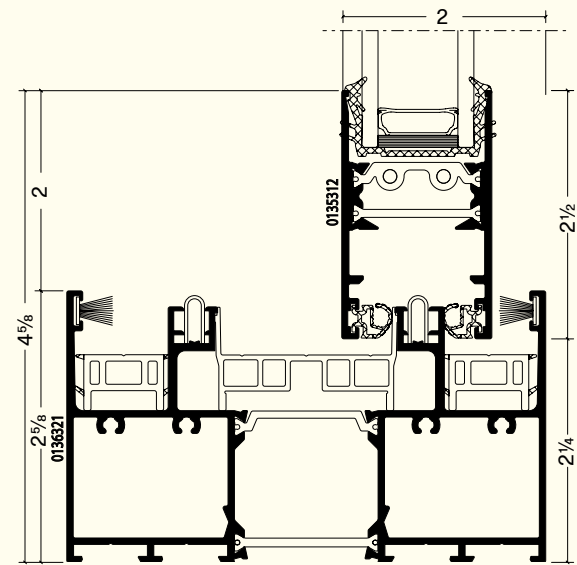
OptiLine Casement



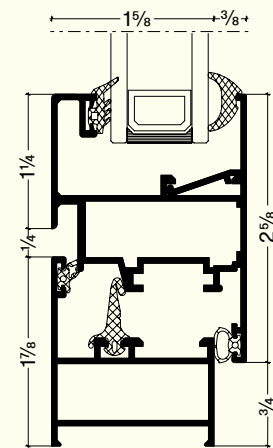
OptiLine Sliding



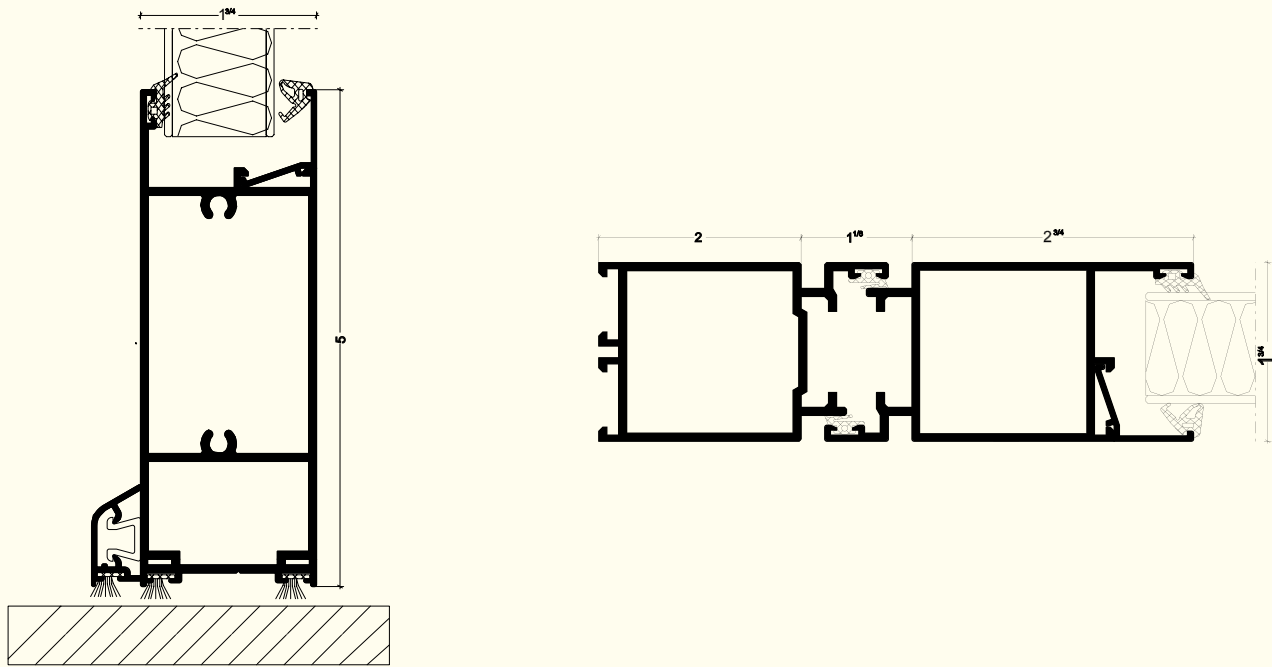
OptiLine Sliding Window



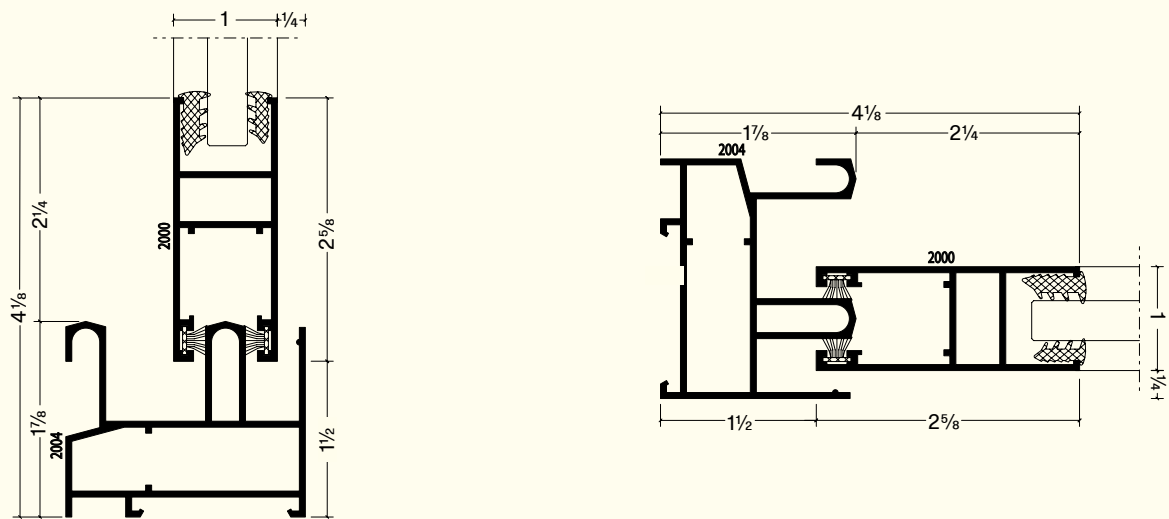
OptiLine Interior Window



OptiLine Interior Door



OptiLine Interior Slider



Join the Optimedia team

We are constantly recruiting agents to represent Optimedia. We export to all continents and offer extensive sales support and packages so you can be an exceptional dealer in your area.



Contact

 [optimedia](#)

 [Optimedia SRL](#)

 [optimedia.eu](#)

 [optimedia.eu](#)





S.C. OPTIMEDIA S.R.L.
Calea Sântandrei, nr. 38
410238, Oradea, România
+40 259 442 821
worldwide@optimedia.eu

optimedia.eu