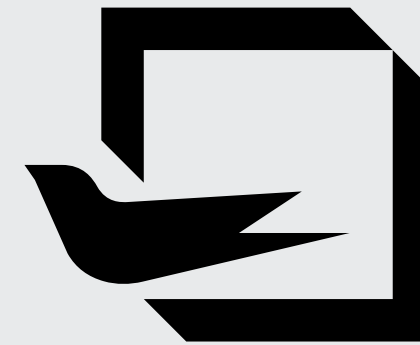


OptiFold



OPENING
NEW
HORIZONS

+31
years of experience

+70.000
square meters

+2.500
partners



Optimedia has been producing PVC and Aluminum joineries since 1994, amassing an impressive and modern production system. Since 2006, we have started exporting our products currently having more than 2.500 B2B partners worldwide.

OUR VISION:

To be a leader in the production of PVC and Aluminum joineries, offering support to all our partners. To achieve this, we have kept to our core principles, maintaining the quality of our products and the relationships with our partners as top priorities.

OUR MISSION:

To produce windows and doors that have certified and proven characteristics, manufactured and delivered to the highest market standards.



GUARDIAN GLASS is one of the largest and most innovative glass manufacturers in the world. Founded in 1932 in Detroit, Michigan, the company operates on five continents, serving more than 160 countries.

guardianglass.com



SAINT-GOBAIN GLASS is the european leader in the production of construction glass. The factory in Călărași, Romania, has the most modern float glass production line in Europe. The thermal, acoustic and security performances of SAINT-GOBAIN glazings recommends them for the most creative and original architectural solutions.

saint-gobain-glass.com

OptiFold

PRODUCT GEOMETRY

Frame depth: **2 7⁄8 in**
Sash depth: **2 7⁄8 in**

IGU OPTIONS

Double/Triple-Pane
maximum IGU thickness: **1 3⁄4 in**

THERMAL PERFORMANCE

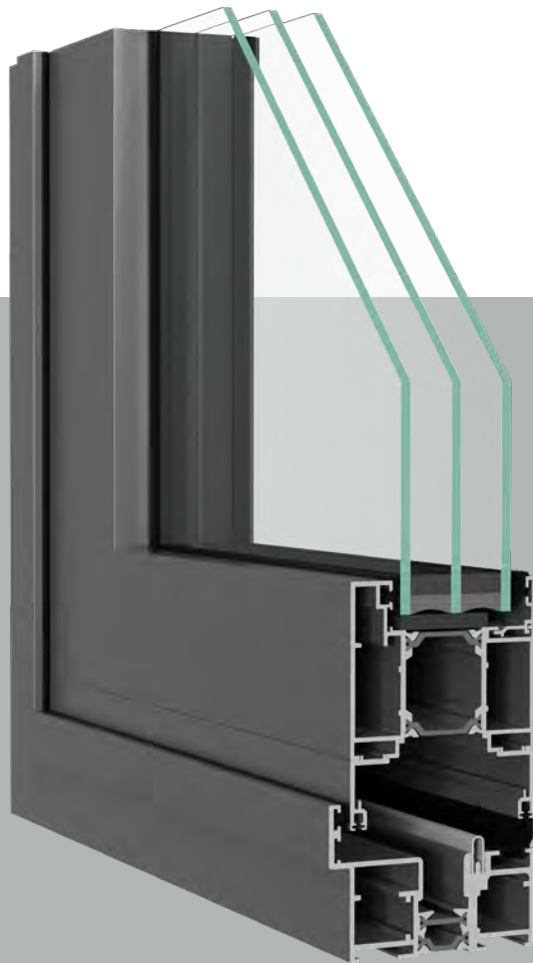
U_{factor} ≥ 0,17 Btu/h·ft²·F

SASH MAXIMUM DIMENSION

47 1⁄4 in x 118 1⁄8 in

OPENING STYLES

Up to 14 sashes



*THE PHOTOS ARE FOR INFORMATIONAL PURPOSES ONLY.

This foldable system with thermal barrier is ideal for closing large openings with a modern and versatile solution. It can be configured with up to 14 sashes for outward or inward opening, including both even and odd configurations. The hidden easy access threshold and the guide rollers, hidden in the closed position, give the system a clean and attractive look. The system therefore masterfully combines thermal efficiency with a contemporary and thoughtful design.



OptiFold Vivid

PRODUCT GEOMETRY

Frame depth: **3 1⁄8 in**
Sash depth: **3 1⁄8 in**

IGU OPTIONS

Double/Triple-Pane
maximum IGU thickness: **1 7⁄8 in**

THERMAL PERFORMANCE

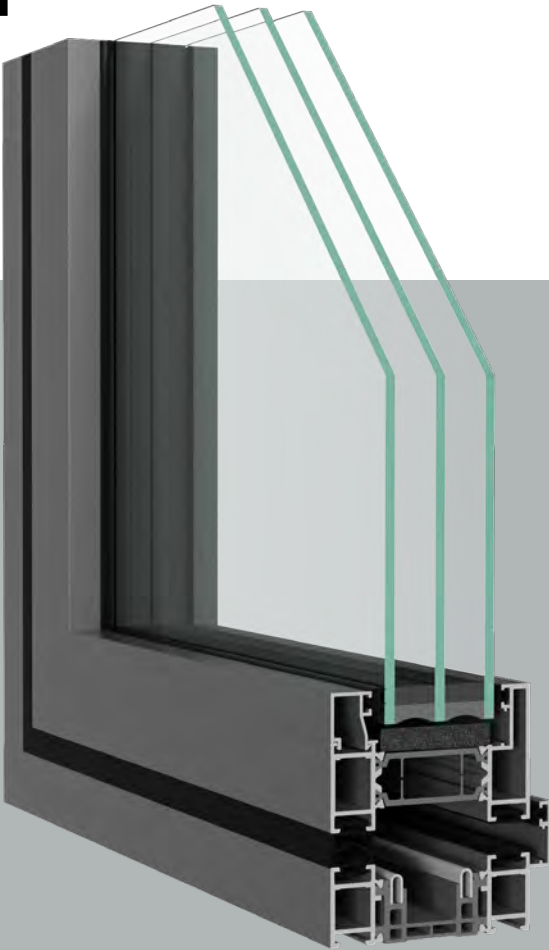
U_{factor} ≥ 0,14 Btu/h·ft²·F

SASH MAXIMUM DIMENSION

47 1⁄4 in x 118 1⁄8 in

OPENING STYLES

Up to 14 sashes



*THE PHOTOS ARE FOR INFORMATIONAL PURPOSES ONLY.

Separate environments while seamlessly unifying spaces with this bi-fold door system, featuring a 3 1⁄8 inches deep frame. As an evolution of the Bi-fold series, it delivers exceptional thermal and acoustic performance, thanks to its 1 3⁄4 inch thermal break and glazing capacity of up to 1 7⁄8 inch. Additionally, its slim 4 3⁄8 inches central section maximizes the glazed surface, flooding interior spaces with natural light.



OptiFold Plus

PRODUCT GEOMETRY

Frame depth: **3 in**
Sash depth: **3 in**

IGU OPTIONS

Double/Triple-Pane
maximum IGU thickness: **2 ½ in**

THERMAL PERFORMANCE

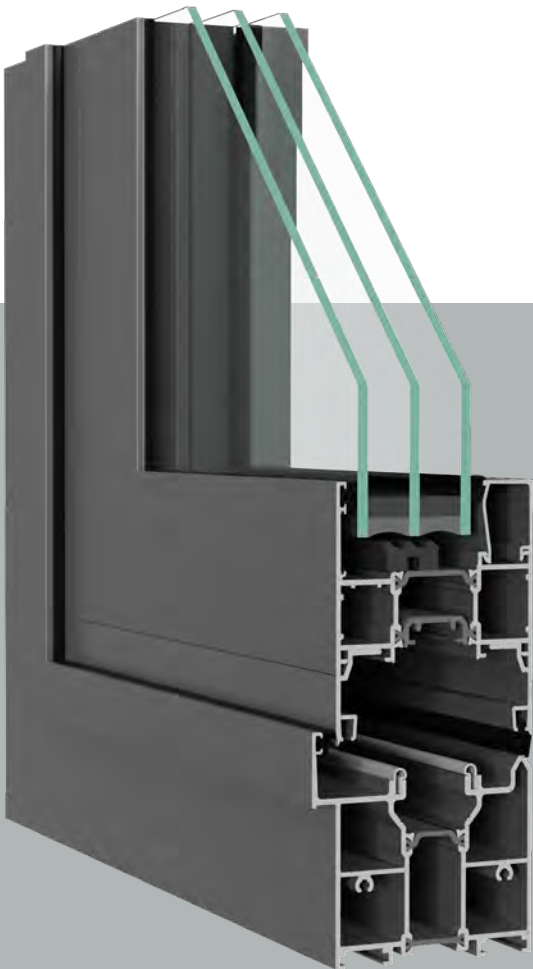
U_{factor} ≥ 0,23 Btu/h·ft²·F

SASH MAXIMUM DIMENSION

47 ⅞ in x 118 ⅞ in

OPENING STYLES

Up to 8 sashes



*THE PHOTOS ARE FOR INFORMATIONAL PURPOSES ONLY.

OptiFold Plus features exceptional dimensions that create striking transparency and a unique aesthetic. This remarkable aluminum door system enables the connection of up to eight panels, effortlessly blending the exterior and interior in perfect harmony.





Glass represents approximately 80% of a joinery's surface. Optimedia equips its products with Saint Gobain Glass or Guardina glazings that meet thermal, acoustic and security requirements, whilst ensuring the desired indoor ambiance. Their winter-summer comfort function maintains a pleasant interior atmosphere throughout the year, with the sheen of their coating giving the space a touch of elegance.

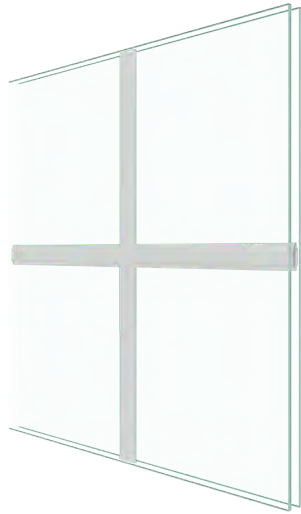
CONFIGURATION OPTIONS

For design purposes or to protect you from prying eyes, Optimedia offers you a wide range of decorative glass with a large number of models, textures and colors.

Also, for added style and elegance, you can choose between georgian and astragal bars. These can be of different sizes, colors and shapes, made of PVC or Aluminum.



Astragal Bars
1" x 3/8" or 1 5/8" x 3/8"



Georgian Bars
3/4" x 1/4" or 1" x 1/4"

Tempered glass:
Optimedia ESG

ESG is a type of glass that, following the tempering process, shows a considerably higher resistance to mechanical and thermal stresses compared to ordinary glass (including laminated glass). In case of breakage, ESG glass fragments into small pieces with blunt edges. Its superior mechanical properties recommend it for large glazed elements.

USES:

Architectural: all types of interior or exterior windows, doors and glass assemblies, consisting of independent or linked elements, facades, glazed roofs, stairs and even glass floors;

Urban furniture: telephone booths, public transport stations, parapets;

Interior furniture: table tops, shower cabins, shelves, furniture.

WHY ESG (TEMPERED) GLASS?



ESG glass is 50% lighter than laminated glass, thus facilitating its transport and assembly whilst at the same time extending the joinery's life by reducing the load on the hardware.

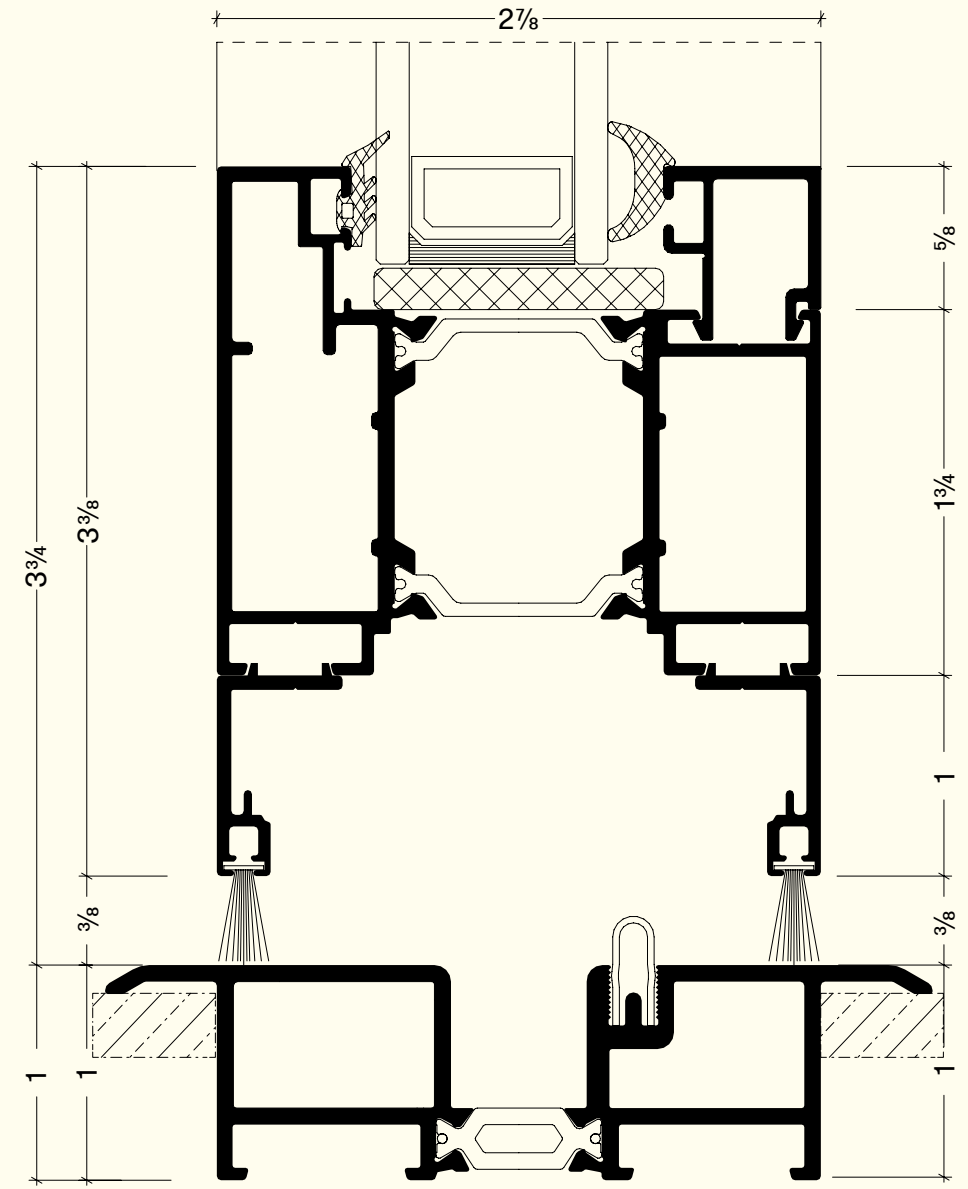
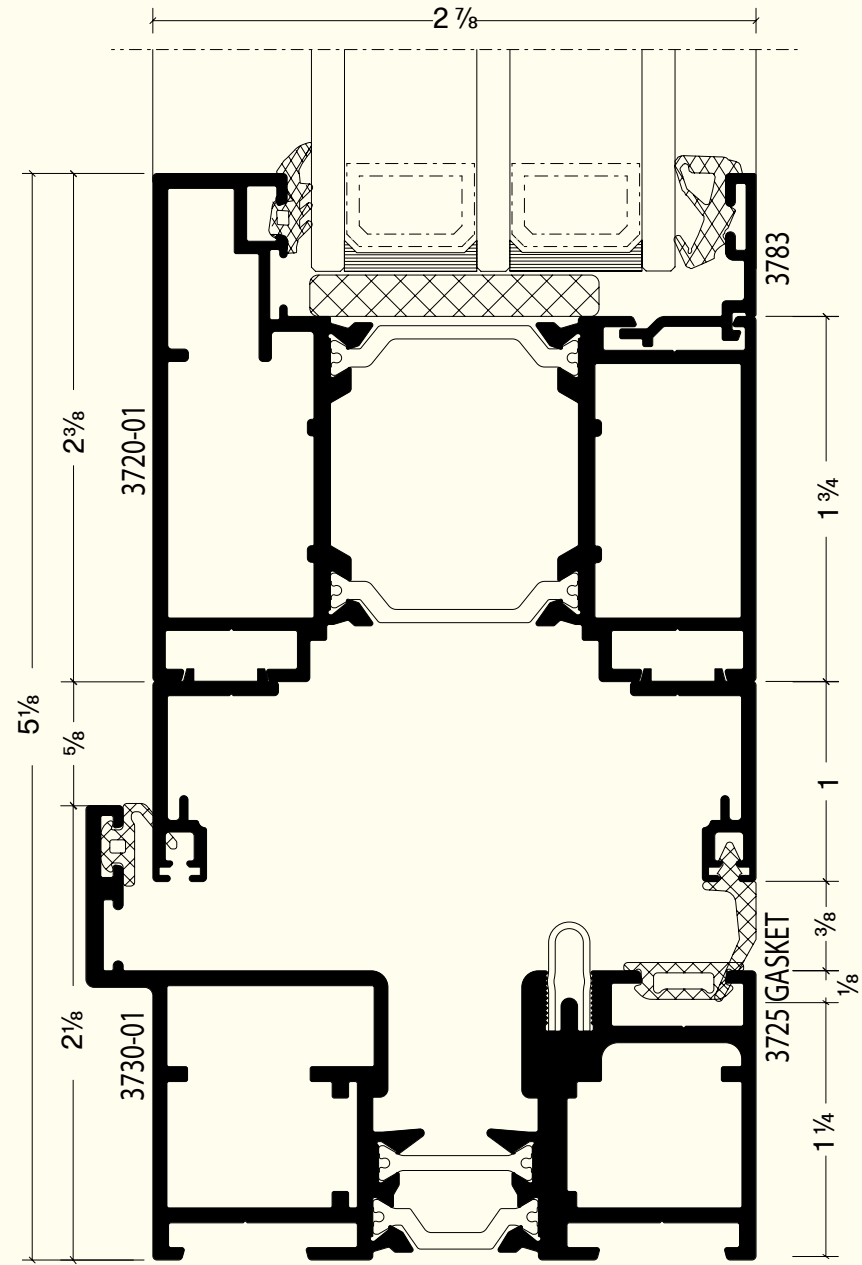


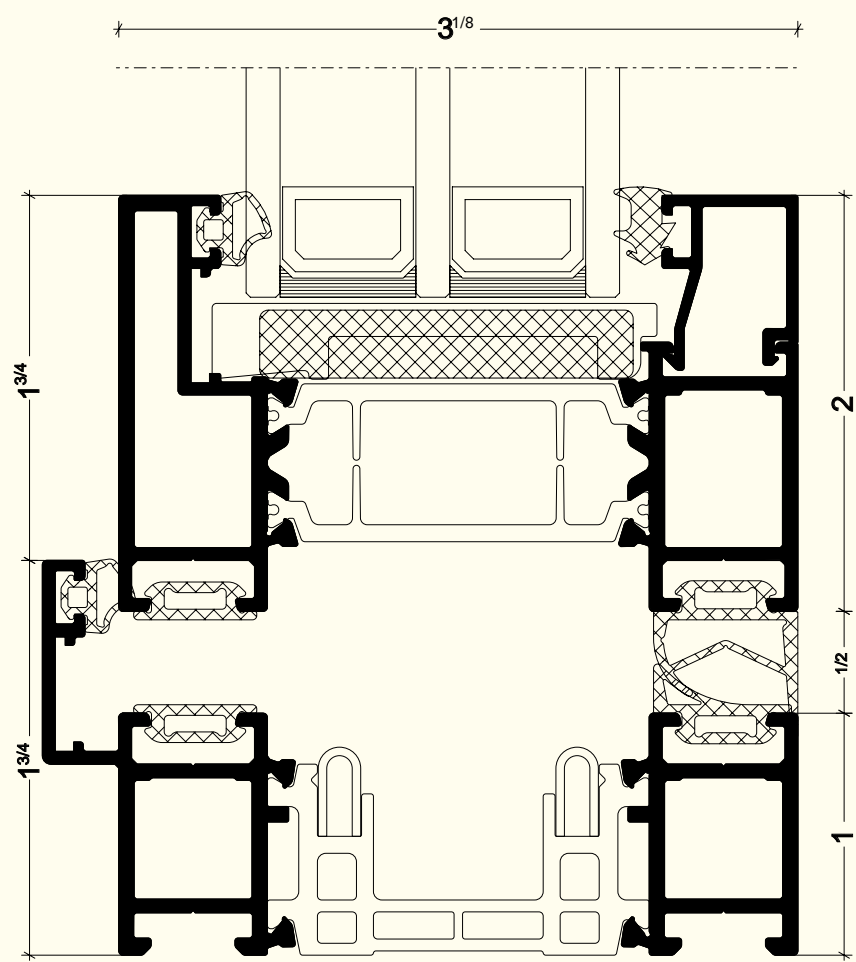
It is 5 times more resistant to tension, shocks and bending stresses compared to an ordinary or laminated glass of the same thickness.

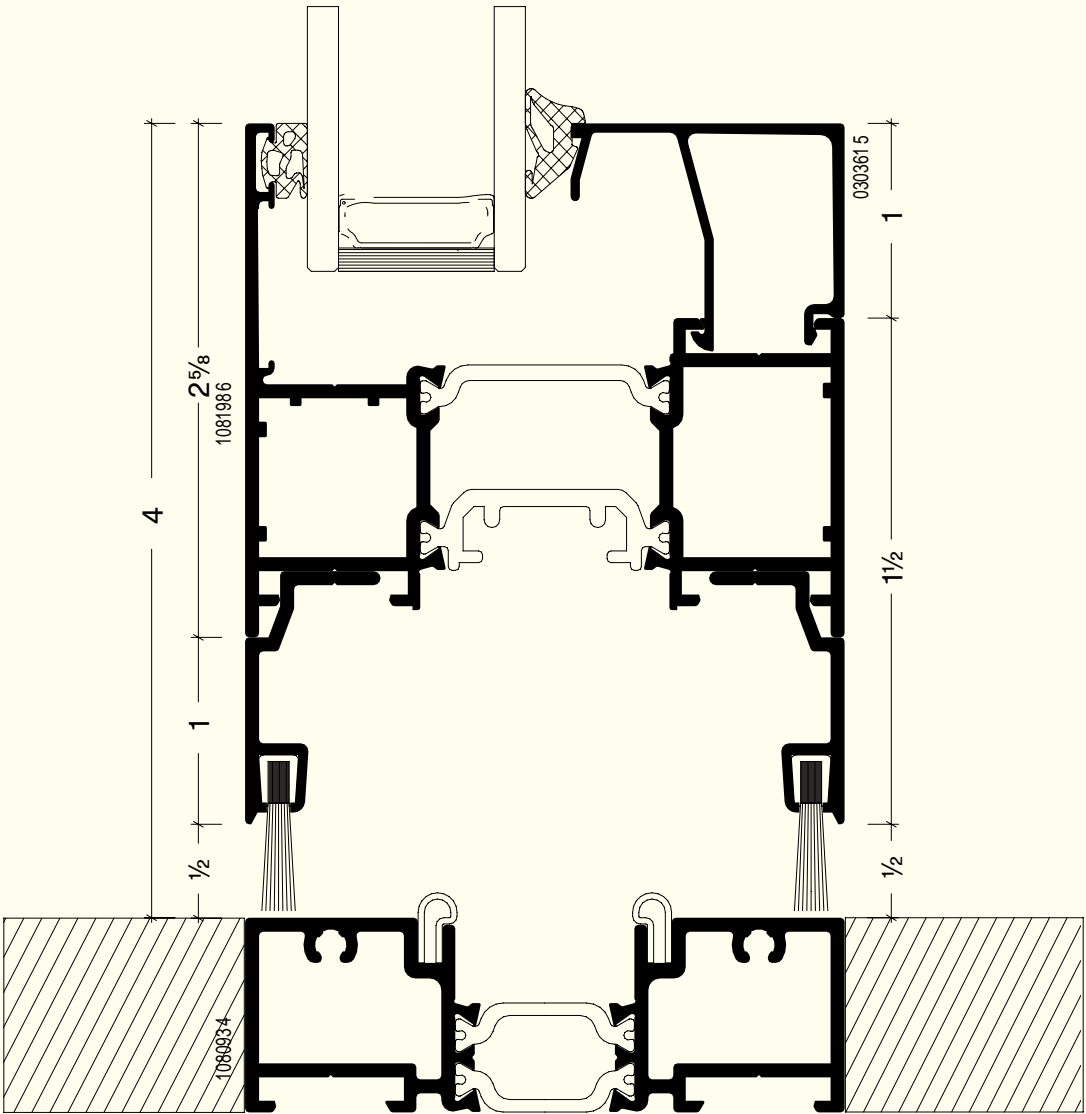
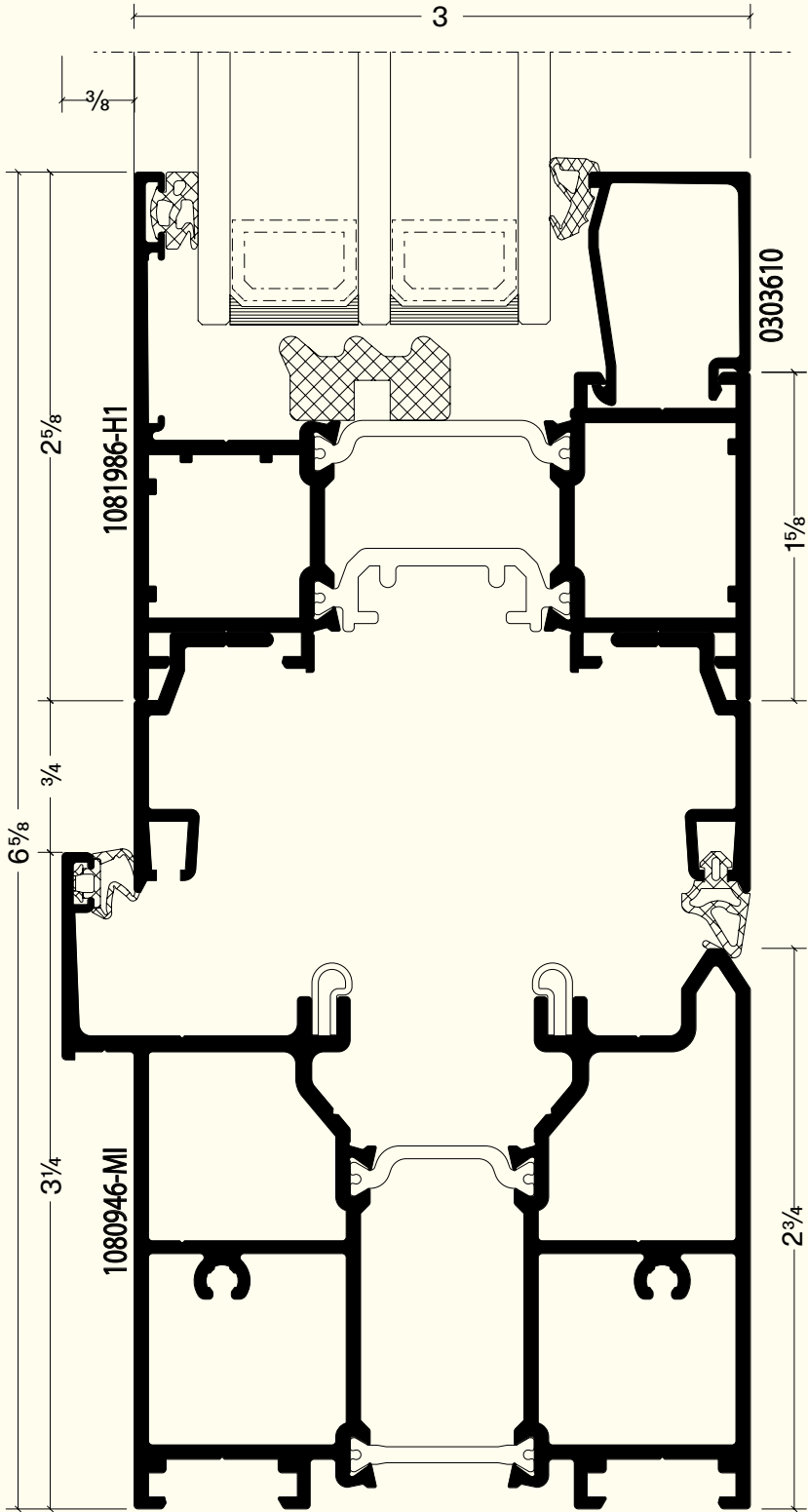


It reduces the risk of injury in case of breakage, by fragmenting into small, blunt pieces and limits the risk of break-ins.

Glass







Join the Optimedia team

We are constantly recruiting agents to represent Optimedia. We export to all continents and offer extensive sales support and packages so you can be an exceptional dealer in your area.



Contact

 [optimedia](#)

 [Optimedia SRL](#)

 [optimedia.eu](#)

 [optimedia.eu](#)





S.C. OPTIMEDIA S.R.L.
Calea Sântandrei, nr. 38
410238, Oradea, România
+40 259 442 821
worldwide@optimedia.eu

optimedia.eu