



# TEZA 55 Series

## Hydraulic Awning Window

Explore a world of possibilities with TEZA Doors and Windows, where we don't just open doors, we create entrances to a better living. Welcome home.



**TEZA's Hydraulic awning windows** are top-hinged and open outward from the bottom, providing excellent ventilation and protection from the rain.

## Product Overview

The TEZA 55 Series Hydraulic Awning Window features a high-quality hydraulic mechanism, allowing for smooth operation and secure sealing. Built with a durable aluminum frame, this window provides excellent durability and long-term performance. The customizable glass options, including frosted and smart glass, allow for flexibility in both aesthetics and privacy. The window is designed for easy maintenance and reliable functionality, making it a perfect choice for spaces requiring both style and performance.

## Limitations:

The TEZA 55 Series Hydraulic Awning Window is available in widths ranging from 20” to 79” and heights from 20” to 59”. These specifications ensure smooth operation and structural stability. It is crucial to adhere to these size limitations to maintain optimal performance and functionality. Any installations outside of these dimensions may affect the window’s operation and durability.

## Energy Efficiency

The TEZA 55 Series Awning Window boasts a U-value of 0.30 for standard low-E, dual-pane glass, ensuring excellent energy efficiency. The glass can be customized with various coatings, tints, and thicknesses to enhance privacy, protection, and thermal performance. Additionally, the thermally broken aluminum frame provides an insulating barrier, further improving energy efficiency.

## Performance Chart

|                             |                         |
|-----------------------------|-------------------------|
| Frame Material              | Aluminum 6063-TS        |
| Frame Thickness             | 1.72mm<br>DSLS115ZB-02A |
| U-Factor                    | 0.30                    |
| Argon Fill                  | 90%                     |
| Solar Heat Gain Coefficient | 0.23                    |
| Visible Transmittance       | 0.51                    |
| Air Leakage                 | 0.30                    |
| Sound Performance           | 0.30                    |
| Wind Load Resistance        | 77 mph                  |

## Inspection Report

| No. | Inspection Item | Unit Symbol | Standard Requirement | Inspection Result | Result    |
|-----|-----------------|-------------|----------------------|-------------------|-----------|
| 1   | Mg              | %           | 0.45-0.9             | 0.46              | Qualified |
| 2   | Si              | %           | 0.20-0.6             | 0.38              | Qualified |
| 3   | Fe              | %           | ≤0.35                | 0.16              | Qualified |
| 4   | Cu              | %           | ≤0.10                | 0.03              | Qualified |
| 5   | Zn              | %           | ≤0.10                | 0.03              | Qualified |
| 6   | Mn              | %           | ≤0.10                | 0.03              | Qualified |
| 7   | Cr              | %           | ≤0.10                | 0.02              | Qualified |
| 8   | Ti              | %           | ≤0.10                | 0.03              | Qualified |

## Awning Windows Comparison Chart

| Feature                                  | 115 Series Awning Window |
|--|--------------------------|
| Thermal and Sound Insulation             | ✓                        |
| Thermal Broken Aluminum                  | ✓                        |
| Seaside Option                           | ✓                        |
| Double and Triple Pane Glass             | ✓                        |
| Corner Option                            | ✓                        |
| Max Panels                               | —                        |
| Maximum Height                           | —                        |
| Maximum Panel Width                      | —                        |
| Low Threshold Option                     | ✓                        |
| Wide Range of Threshold Options          | ✓                        |
| Child Finger Safe                        |                          |
| Two-Point Locking System with Key        | ✓                        |
| Slim Profile Distance Between Glass      | —                        |
| Easy Clean Opened Track Threshold Option | —                        |
| Retractable Screen Option                | —                        |
| Price                                    | \$\$\$                   |
| Aluminum Thickness                       | Standard Aluminum        |
| Heavy Duty Hardware                      | —                        |
| Adjustable Hardware                      | —                        |

## TEZA 55 Series Hydraulic Awning Window Features

| Feature                   | TEZA 55 Series Hydraulic Awning Window    |
|---------------------------|---|
| <b>Design</b>             | Hydraulic Mechanism for Smooth Operation  |
| <b>Material</b>           | Durable Aluminum Frame                    |
| <b>Glass Options</b>      | Customizable (Frosted Glass, Smart Glass) |
| <b>Weather Protection</b> | Secure Seal for Weather Tightness         |
| <b>Ventilation</b>        | Adjustable Opening for Optimal Airflow    |
| <b>Minimum Width</b>      | 20"                                       |
| <b>Maximum Width</b>      | 79"                                       |
| <b>Minimum Height</b>     | 20"                                       |
| <b>Maximum Height</b>     | 59"                                       |

## Glass Options

### -Clear Glass (1/4" - 5mm)

Clear glass offers transparency and excellent visibility, allowing natural light to flood interior spaces.

### -Insulation Glass (Online) (1/4" - 5mm)

This glass integrates low emissivity (low-e) properties directly into its composition, enhancing performance and durability. It provides superior thermal insulation benefits.

### -Low-E 2 Glass (Offline) (1/4" - 5mm)

TEZA's Low-E3 Glass is designed to reject solar heat while maintaining visibility and offering exceptional fading protection. It adapts to various climates and blocks 85% of harmful UV rays.

### -Low-E 4 Glass (Offline) (1/4" - 5mm)

TEZA Low-E4 Glass offers enhanced light transmittance combined with superior solar control. It reflects heat back into the home in winter and blocks 90% of solar heat. It includes 20% more tint visibility than standard glass.

### -Triple Panel Glass (1/4" - 5mm)

Each pane of glass is separated by an air gap, enhancing sound absorption and blocking sound transmission. This design reduces outside noise infiltration into interior spaces.

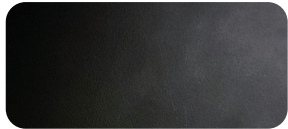
| Glass Type                | U-Factor<br>How well a product prevents heat from escaping. | Solar Heat Gain Coefficient<br>How well a product blocks heat caused by sunlight. | Visible Light Transmittance<br>How much visible light comes through a product. | UV Protection<br>How well a product blocks ultraviolet rays. |
|---------------------------|---|---|--|--|
| Insulation Glass (Online) | ★★★★☆   | ★★★★☆   | ★★★★☆  | ★★★★☆  |
| Low-E 2 Glass (Offline)   | ★★★★☆   | ★★★★☆   | ★★★★☆  | ★★★★☆  |
| Low-E 4 Glass (Offline)   | ★★★★☆   | ★★★★☆   | ★★★★☆  | ★★★★☆  |
| Triple Panel Glass        | ★★★★★   | ★★★★★   | ★★★★★  | ★★★★★  |

| Dual Insulating Glass Construction   | STC | OITC* | Frequency (Hz)                |     |     |     |     |     |     |     |     |     |      |      |      |      |      |      |
|--|-----|-------|-------------------------------|-----|-----|-----|-----|-----|-----|-----|-----|-----|------|------|------|------|------|------|
|  |     |       | 100                           | 125 | 160 | 200 | 250 | 315 | 400 | 500 | 630 | 800 | 1000 | 1250 | 1600 | 2000 | 2500 | 3150 |
|  |     |       | Sound Transmission Loss ( bB) |     |     |     |     |     |     |     |     |     |      |      |      |      |      |      |
| 1" overall- ¼", glass, ½", airspace, ¼" glass  | 35  | 30    | 27                            | 24  | 29  | 22  | 22  | 25  | 30  | 33  | 35  | 35  | 38   | 40   | 42   | 37   | 37   | 43   |
| 1" overall- ¼", glass, ½", airspace, ¼" glass  | 38  | 31    | 27                            | 23  | 28  | 21  | 27  | 29  | 34  | 35  | 37  | 37  | 41   | 43   | 45   | 44   | 39   | 46   |
| Triple Insulating Glass Construction   | STC | OITC* | Frequency (Hz)                |     |     |     |     |     |     |     |     |     |      |      |      |      |      |      |
|  |     |       | 100                           | 125 | 160 | 200 | 250 | 315 | 400 | 500 | 630 | 800 | 1000 | 1250 | 1600 | 2000 | 2500 | 3150 |
|  |     |       | Sound Transmission Loss ( dB) |     |     |     |     |     |     |     |     |     |      |      |      |      |      |      |
| 1- ¾" overall - ¼" glass, ½" airspace, ¼" glass, ½" airspace, ¼" glass                             | 39  | 31    | 25                            | 22  | 29  | 24  | 25  | 29  | 34  | 37  | 40  | 40  | 43   | 46   | 48   | 47   | 41   | 47   |
| 2- ¾" overall - 3/8" glass, ¾" airspace, 5/16", glass ¾" airspace, 1/4" glass, 0.60" PVB, ¼" glass | 45  | 35    | 33                            | 30  | 34  | 37  | 39  | 43  | 44  | 45  | 46  | 46  | 43   | 41   | 43   | 49   | 55   | 57   |

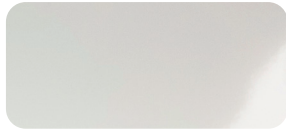
## Finishes and Colors

Our finishes come in both in-stock and designer selections, and can be customized to match almost any color. Standard options include Bronze Anodized and Satin Anodized, featuring a Class 1 coating thickness for enhanced smoothness and durability. Our designer colors boast a high-quality paint finish that meets the AAMA-2605 rating, the highest standard for organic finishes.

### Color Choice



**Cartier Black**



**Cartier White**



**White Oak**



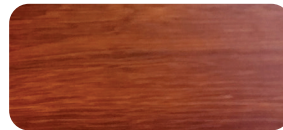
**Cartier Silver**



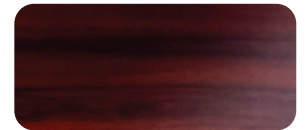
**Ash**



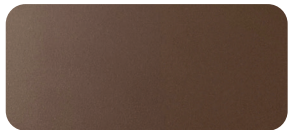
**Hainan Scented  
Rosewood**



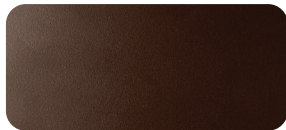
**Gold Oak**



**Walnut Wood**



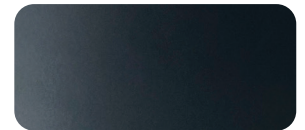
**Mocha Coffee**



**Cartier Dark Coffee**



**Indians Red Oak**



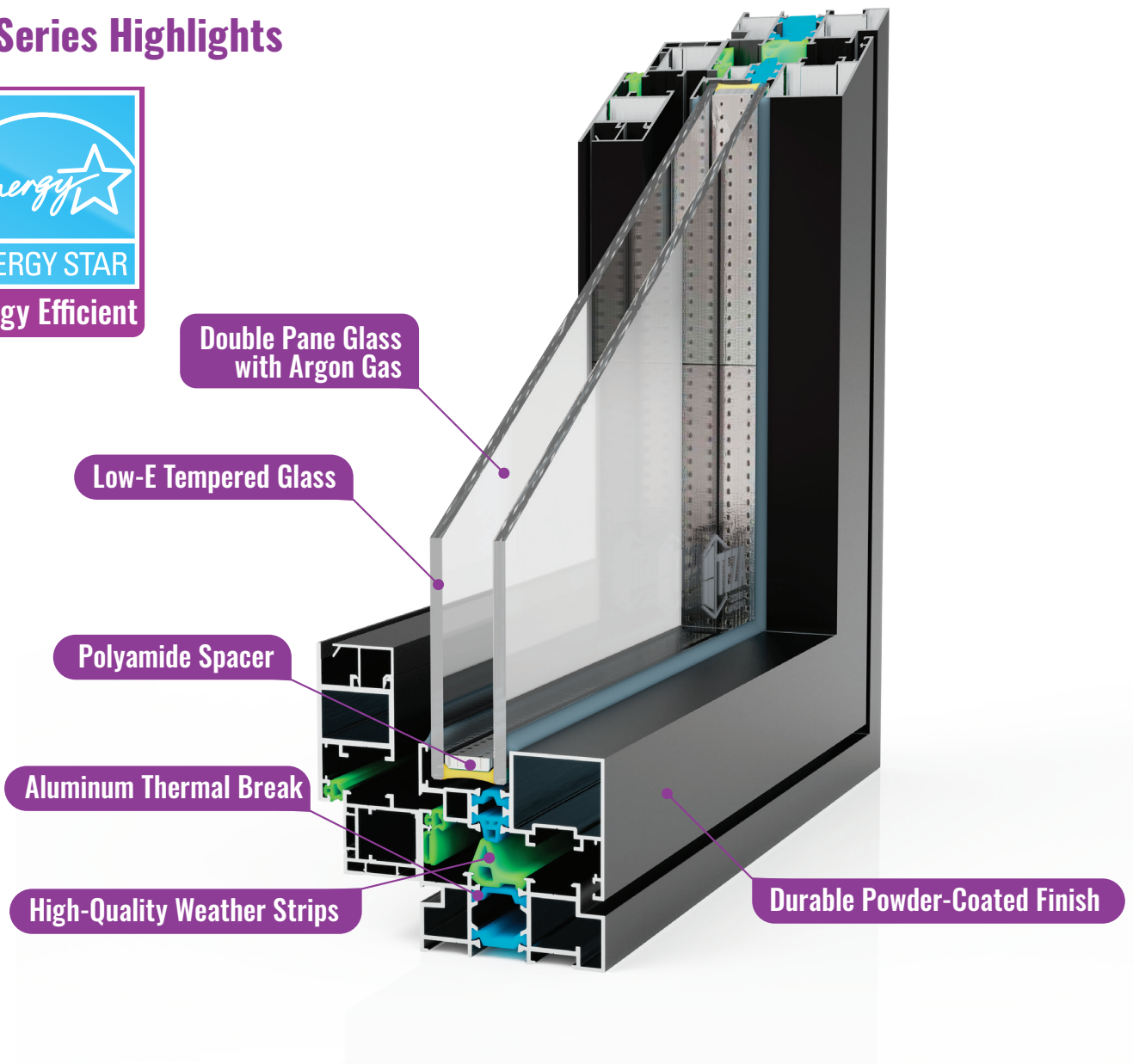
**Ferrero Gray**

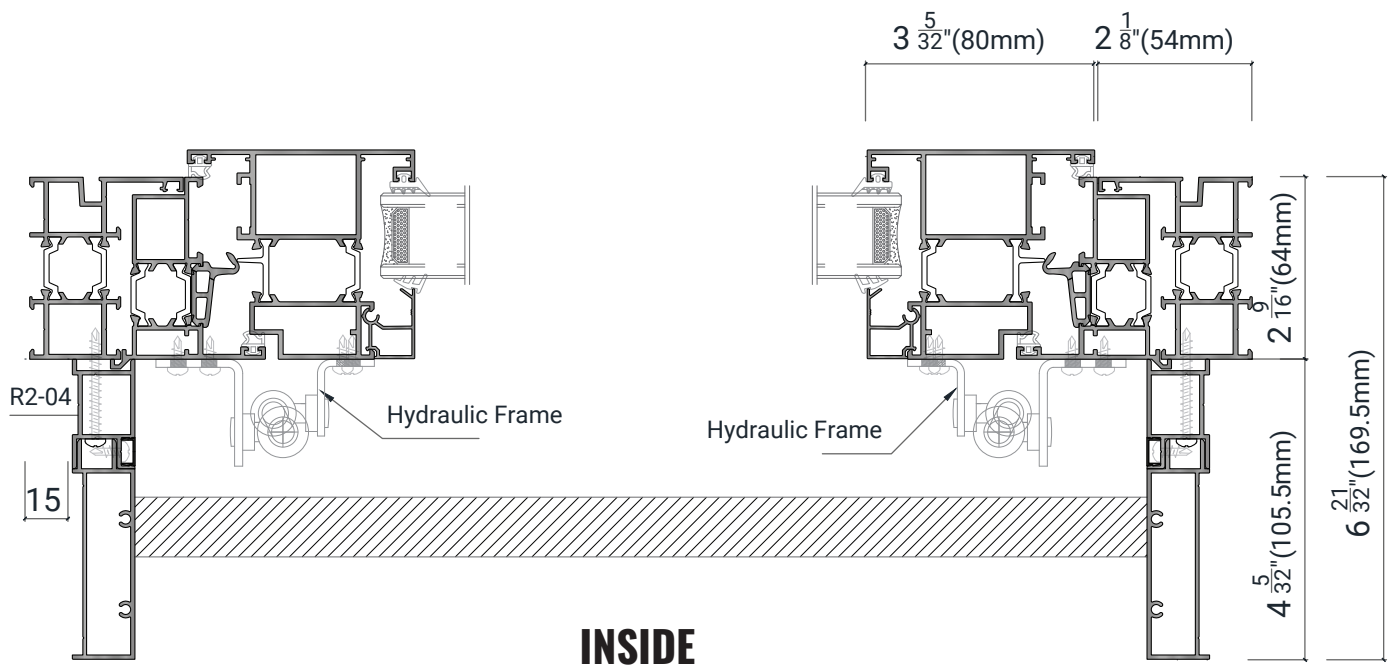
### Grille Options

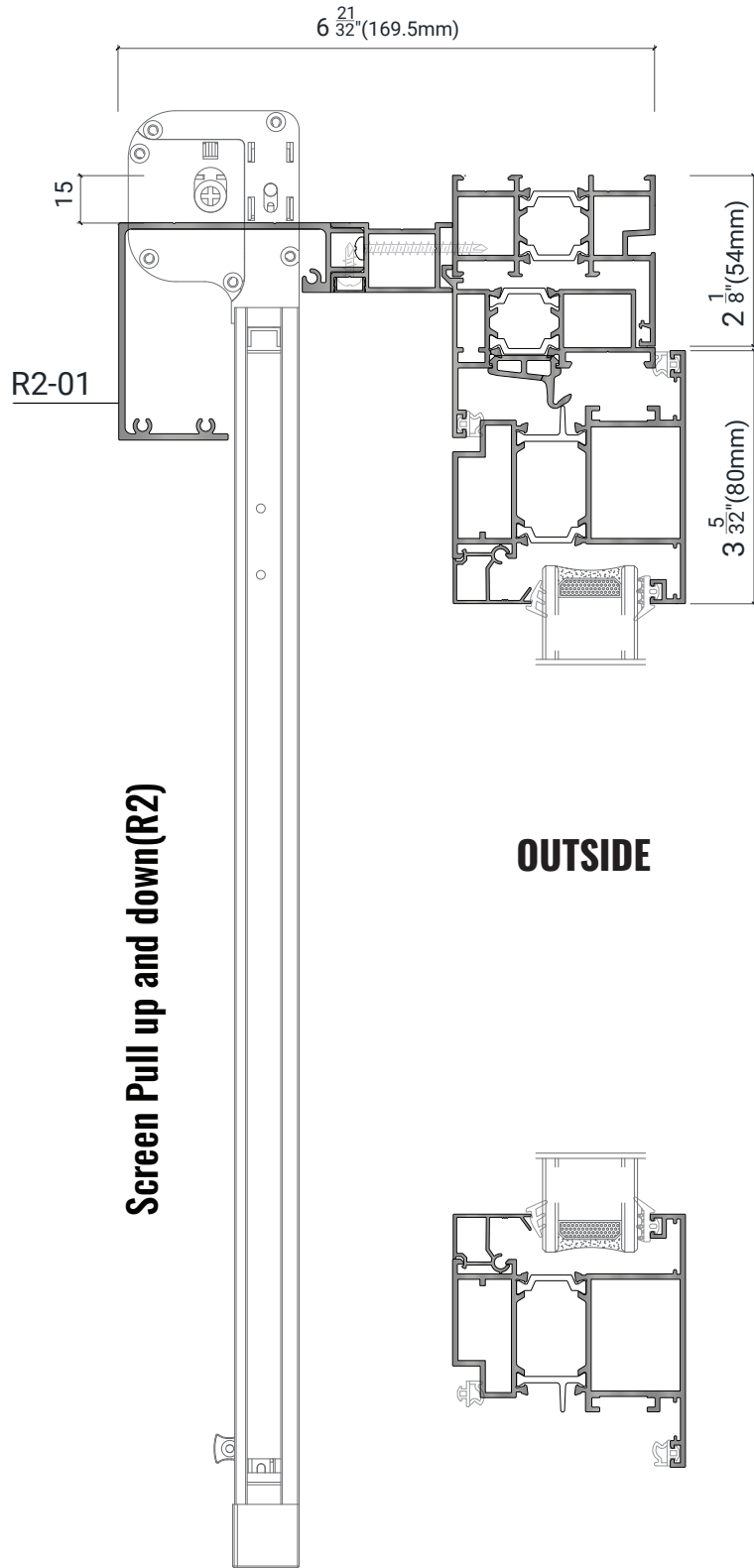
|  |  |
|--|--|
| <b>Sizes</b>   | 10mm*15.6mm, 35mm*24.5mm,<br>14.8mm*26mm, 12mm*20mm, 10mm*19mm, 10mm*15mm  |
| <b>Style</b>   | Full Divided Light, Simulated Divided Light, Convenient Cleaning Options   |
| <b>Permanent Exterior<br/>Permanent Interior<br/>with Spacer</b> | <b>Full Divided Light</b><br>An authentic look with full divided light grilles that are permanently applied to the interior and exterior of your patio door with spacer between the glass. |
| <b>Permanent Exterior<br/>Permanent Interior</b>                 | <b>Simulated Divided Light</b><br>Simulated divided light offers permanent grilles on the exterior and interior with no spacer between the glass.  |
| <b>Permanent Exterior<br/>Interior</b>                           |  |
| <b>Interior Grille</b>   | <b>Convenient Cleaning Options</b><br>They are installed between the glass panels and come with a contoured profile of either 1" or ¾".  |
| <b>FineLight Grilles<br/>Between the Glass</b>                   |  |



## 55 Series Highlights





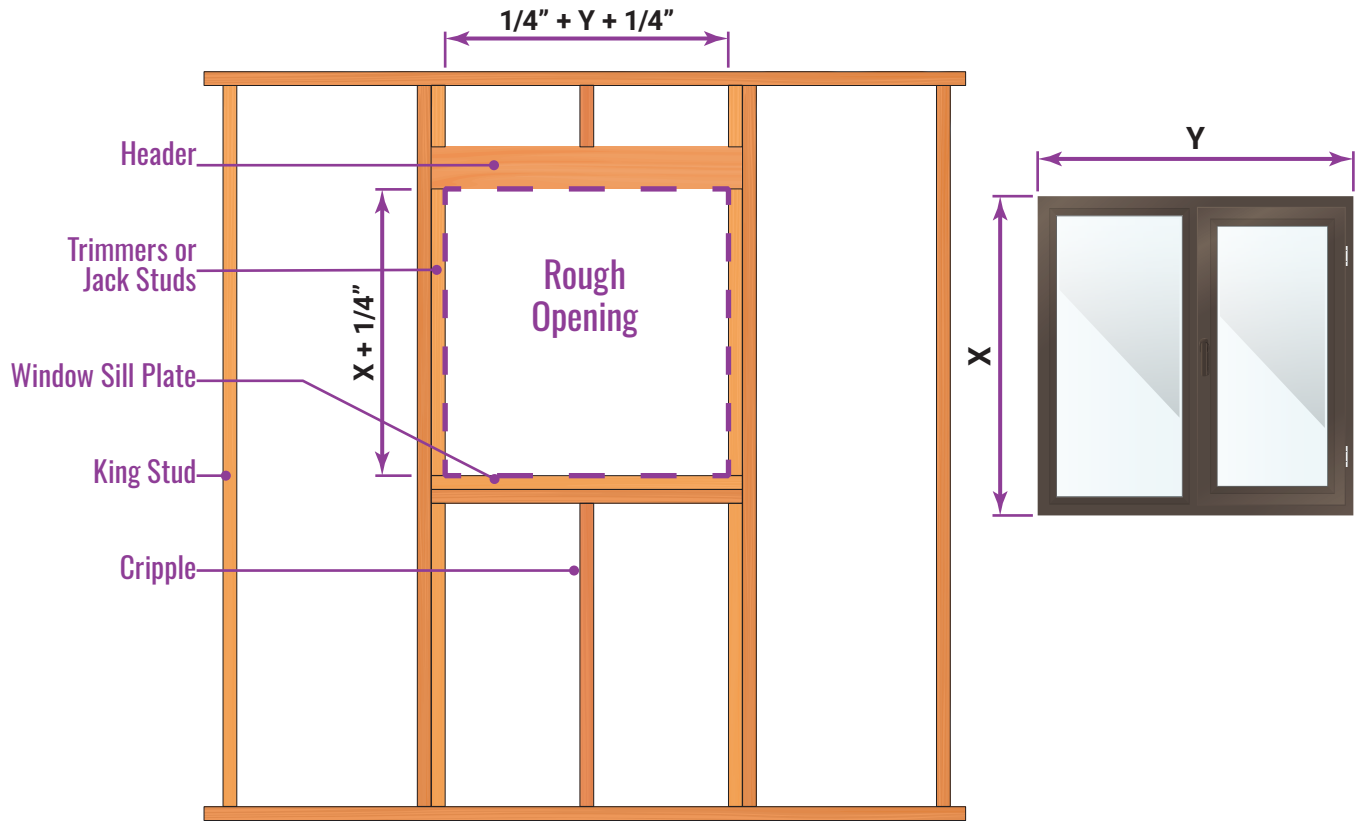




## Measurements and Rough Opening

TEZA products sizes behind the frame to frame, and sizes on the invoice will be exact sizes of products. For rough opening requires  $1/4"$  to each

Installation is the sole responsibility of the distributor, user contractor, or their representative.



## Inspection Report

| No. | Inspection Item | Unit Symbol | Standard Requirement | Inspection Result | Result    |
|-----|-----------------|-------------|----------------------|-------------------|-----------|
| 1   | <b>Mg</b>       | %           | 0.45-0.9             | 0.46              | Qualified |
| 2   | <b>Si</b>       | %           | 0.20-0.6             | 0.38              | Qualified |
| 3   | <b>Fe</b>       | %           | $\leq 0.35$          | 0.16              | Qualified |
| 4   | <b>Cu</b>       | %           | $\leq 0.10$          | 0.03              | Qualified |
| 5   | <b>Zn</b>       | %           | $\leq 0.10$          | 0.03              | Qualified |
| 6   | <b>Mn</b>       | %           | $\leq 0.10$          | 0.03              | Qualified |
| 7   | <b>Cr</b>       | %           | $\leq 0.10$          | 0.02              | Qualified |
| 8   | <b>Ti</b>       | %           | $\leq 0.10$          | 0.03              | Qualified |

## Notes

- All TEZA window series flanges are included.
- Flanges are 1" in height and installed with screws.
- For rough opening size, allow a minimum 1/4" gap between the window and rough opening.
- All dimensions are in feet and inches.
- All dimensions are to be checked on site.
- Any discrepancy between the architectural drawing and other drawings relevant for construction should be notified before commencement.
- Sill pans are required by code for doors and windows.



TEZA's aluminum products are exceptionally recyclable. In fact, aluminum is one of the most recyclable materials on the planet, capable of being recycled repeatedly without losing its quality or integrity.



(818)818-6001



[sales@Tezadoors.com](mailto:sales@Tezadoors.com)



[www.Tezadoors.com](http://www.Tezadoors.com)



4943 Telegraph Rd  
Los Angeles, CA 90022