



DeepBlue Smart Building System

NingBo DeepBlue Smarthouse Co.,LTD.

<http://www.smarthousing.cn>

E-mail:sales@smarthousing.cn

Tel:+86-574-83066356





DeepBlue is transforming through technology - every process and every product

DeepBlue was founded due to an overwhelming need for change within the industries that create our built environment.

While other major industries have radically modernized, construction still employs many practices first introduced more than 100 years ago. As a result, productivity is falling, costs are rising, the construction workforce is shrinking, quality is variable, and demand outpaces supply.

As a technology-led, end-to-end construction services partner, DeepBlue answers all of these challenges. We are creating new value for our partners by optimizing every aspect of building development, design, and construction.

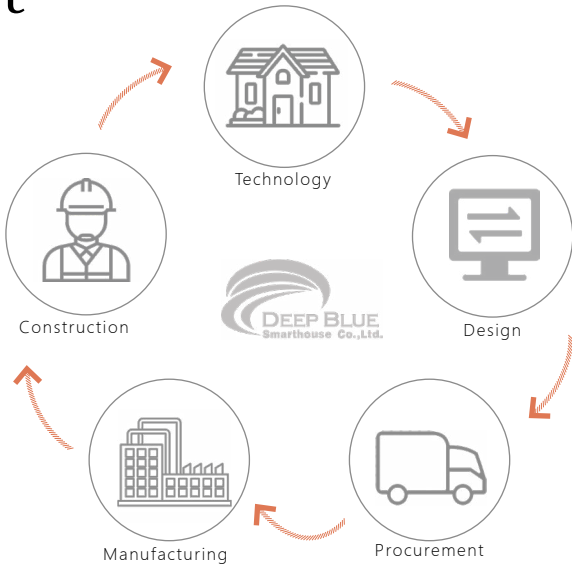
Smarter building. Better communities. For Everyone.

Our Approach is Different

Deepblue is a technology company at heart. We are on a mission to optimize every aspect of building design and construction.

1. Vertically Integrated

We are fully integrated, providing end-to-end building services as a single partner, with robust technology systems connecting



2. Cost-effective Supply Chain

We have built a Cost-effective supply chain of curated, high-quality products, eliminating middlemen and passing on the savings directly to our customers.

Without DeepBlue



With DeepBlue



3. Factory

Our factory is professional and efficient, offering greater precision, higher productivity, and more quality control.

Benefits

Increased Labor Productivity

Less Waste

Highly Skilled Workforce

Improved Jobsite Efficiency

Quality Control

Advanced Technology



DeepBlue Integrated Services

DeepBlue is an end-to-end building services provider. As a full-service partner for developers and architects, we can provide everything you need to deliver the highest quality building projects.



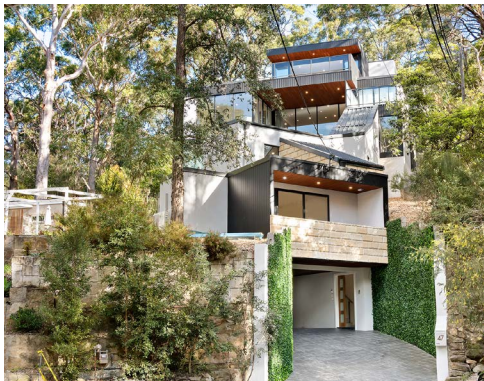
Light steel framing

DeepBlue is developing a catalog of light steel framing products, representing the next generation of high performance building technology. Designed for residential and commercial building projects, DeepBlue's light steel framing solution includes structural engineering, manufacturing and supply of building materials package, meet the requirements of various building projects. Building professionals and developers are already looking to this new generation of light steel framing products for advances in design, value, marketability and sustainability. DeepBlue intends to be at the forefront of this movement.



Kitchen & Bath

DeepBlue offers elegant kitchen and bath solutions, a thoughtfully curated catalog of products from sleek faucets and sinks to custom cabinets and countertops that combine functional ease with sophisticated, timeless design.

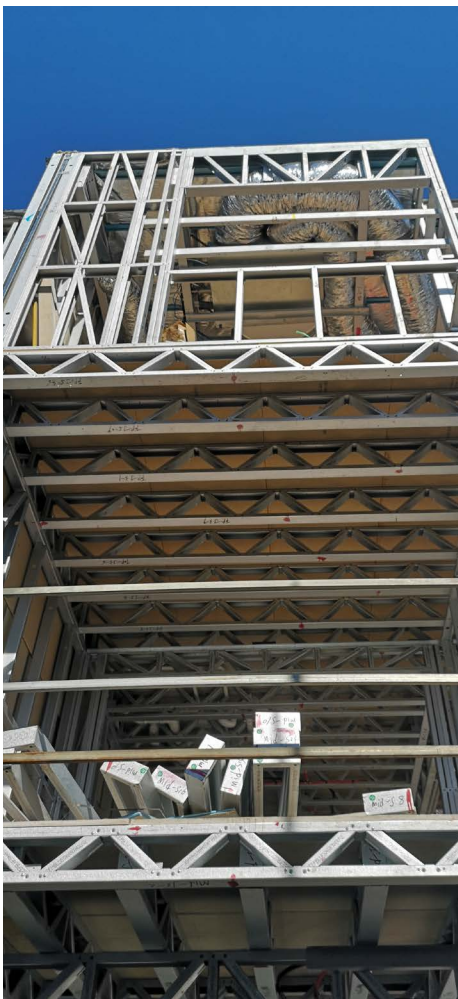
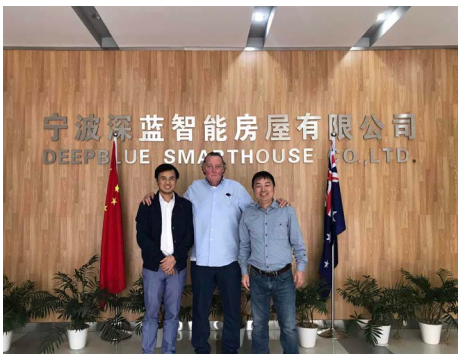
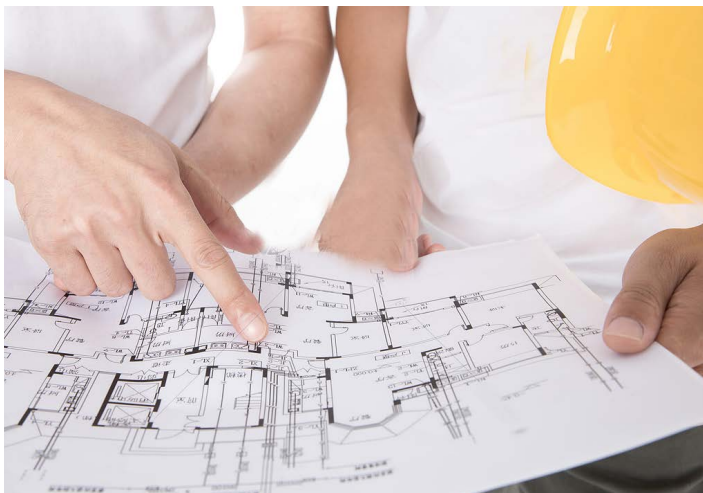


Finish Items

Floor to ceiling, inside and out, DeepBlue can provide the highest quality materials for every aspect of your interior and exterior finish needs. Across every product category in our curated catalog of finish items, we are able to offer extremely competitive pricing, thanks to our ability to aggregate demand for all of our clients and projects.

“Realized Construction should never come at the cost of Envisioned Design”

DeepBlue considers Pre-Construction the most important phase of any project. The ability to align the interests, objectives and practices of all team members at this early stage in the construction cycle is an amazingly accurate predictor of project success.



“Listen!”

We immediately distance ourselves from our competition by being open and empathetic to the vision you have created. In many cases projects have been in preliminary planning stages for years before we become part of the team. Our first goal is to clearly understand your goals and objectives.

“Bring Knowledge and Experience ”

Our place at the table is earned by bringing specific marketplace expertise to design and constructability discussions. Our goal is to take ownership where required and thrive on responsibility and accountability. Our reputation in the industry is that of a great teammate, a claim backed up by the fact that over 85% of our business comes from our existing clientele.

Our goals as your Pre-construction GC partner are:

- Balance concern for schedule, budget, scope, quality, coordination of documents, value engineering, dispute avoidance and minimizing risks for all parties.
- Maximize results with a streamlined process and work to shorten overall delivery period.
- Use innovation, technology, and extensive local market experience to create assurance and accuracy on project time and costs.
- Understand Stakeholders needs; drive down real costs/ reduce redundancies.
- Improve constructability of important details through early involvement of sub-contractors and specialty trades.
- Fill scope gaps through project understanding, code understanding, previous experience, and constant communication.

Virtual Design and Construction (VDC)

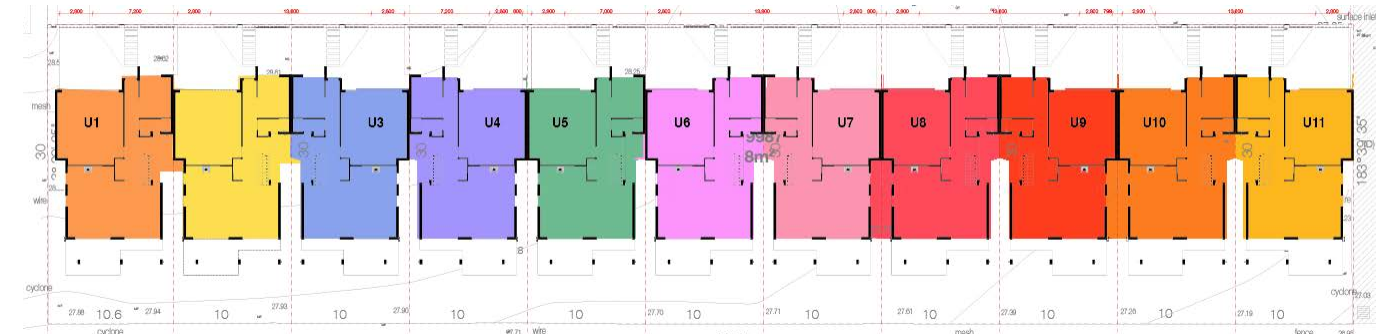
At DeepBlue we believe in an integrated and collaborative project delivery approach, utilizing the Virtual Design and Construction (VDC) process and Building Information Modeling (BIM) as Lean tools to deliver a safe, cost-effective, timely, and complete project. Deepblue is unique in that we create a Single Source of Truth Model (SSTM) for each of our projects, populated by BIM information as early as the Civil, Structural and Landscaping phases. This ensures complete co-ordination at the earliest stages and prevents costly schedule disruptions. Through a transparent, collaborative approach, we can lower the costs of project delivery while increasing efficiency and profitability for our partners.

Our five main goals are:

1. Use BIM to Virtually construct the building in its entirety - Enable Clash Detection.
2. Create a Collaborative Environment based on a Common Platform – Reduce RFI's.
3. Manage Change - Minimize Schedule Impacts.
4. Manage Construction Documents – Reduce Costs.
5. Minimize Risk Exposure – Increase Safety.

Block Scheduling

At DeepBlue, we have developed a scheduling system internally known as the “Block Schedule” to allow us to maintain trade flow, minimize crew sizes and identify with certainty the end date of the project. Our project team will work closely with all trades to develop a 5 day work plan, sequencing workflow to produce a predictable production rate with known man-power while days 6 and 7 are used to adjust to stay on schedule.



Key goals of our Block Schedule approach include: building in its entirety - Enable Clash Detection

Prevent schedule disruption and sub-trade bottlenecks through dynamic scheduling

Create predictable outcomes by basing production rates on known man-power

Maximize productivity by continuous communication on a common platform with all trades



Light Steel Framed Multifamily

Multifamily construction projects shape and define the communities they are built in. DeepBlue believes in the transformative value of the buildings that we help plan, design, engineer and build and their positive long-term effect on the people that populate them.

DeepBlue has an unrivalled commitment to innovation. Using a collaborative pre-construction process, cutting edge VDC/BIM technology, Lean Construction techniques, a deep roster of experienced builders and an impressive global supply chain, DeepBlue offers a one of a kind partner laser-focused on your schedule and budget.

Our construction team's deep experience across a wide variety of markets, combined with our unique approach means that we can provide greater assurance and transparency from feasibility and design all the way through project completion.



Brisbane Project

54 units 3-story apartments in Brisbane
Nestled in the vibrant, leafy, exclusive riverside suburb of Bulimba, this boutique address comprises 53 spacious three bedroom, two or three bathroom, two or three storey freehold terrace homes, all with multiple bathrooms and powder room, private balconies, courtyards and secure private garages.

Project info

Light Steel Frame

54 sets 3 Boors apartments

Australia Brisbane

Over 10000sqm



Kirrawee Project

9 luxury townhouses in Kirrawee
Introducing Kirrawee's newest development, 9 luxury townhouses. The stylish lifestyle which boasts an easy living, security, and convenience. This project offers three-bedroom townhouses with beautifully manicured gardens. This development is set to be the future of easy-care living.

Project info

Light Steel Frame

9 sets luxury townhouses

Kirrawee, Australia

1073 sqm



Grace House

10 townhouses and villas in Ryde
Positioned at Ryde, a brand-new row of boutique, elegantly designed terraces. Spread across two spacious levels, with growing and multi-generational families in mind, this designer home has been finished to exacting standards to provide the quintessential urban retreat.

Project info

Light Steel Frame

10 townhouses and villas

Sydney, Australia

1994 sqm



Jordan Spring

11 townhouses in Jordan spring
Sat in Jordan Spring near a lake. When you stand in such a big opening balcony, you will be surrounded by nature. Deepblue light steel system kept both design aesthetic and strength of structure, and effectively protected the house from getting damp. It is an enjoyment to live in such a comfortable house.

Project info

Light Steel Frame	11 townhouses
Australia	Over 12000sqm



Villawood

200 townhouses in Villawood
Located in Villawood, your 2 story home has lower ground relaxed open plan living, a guest bedroom and access to the backyard, whilst upstairs, you'll find more bedrooms and bathrooms. Deepblue light steel system helped you find an economic and fast way to build such a 200 townhouses project.

Project info

Light Steel Frame	200 townhouses
Australia	Over 50000sqm



Belle House

Belle house is located on a mountain, with the complex foundation and structure. It is almost impossible to achieve using timber frame or concrete. But we did it in Deepblue light steel structure. The architecture plans were designed by local architect. Deepblue converted it to steel design, and optimized our plan to use less structure steel, saving an estimated 4-6 weeks on the structural element of the build. For study area, the customer wanted to make it in concrete at first, but finally, they found they can't find a solution to do this area in concrete. Then our engineer made a solution for client by steel frame, who has about 10 years experience in steel structure. It is our pleasure to take part in this project, and really glad to see such a beautiful luxury villa.

Project info

Light Steel Frame	1 set luxury villa
Sydney, Australia	450 sqm



Bazzurro House

Luxury villa-Bazzurro House in Uruguay
A luxury villa,located in Uruguay was designed by local famous architect. Deepblue light steel system supplied a strong support for the freedom of design. High ceiling, large span, big windows all can be achieved by our system. Excellent design, comfortable house system, give you the enjoyment of life.

Project info

Light Steel Frame	1 set luxury Villa
Uruguay	350 sqm

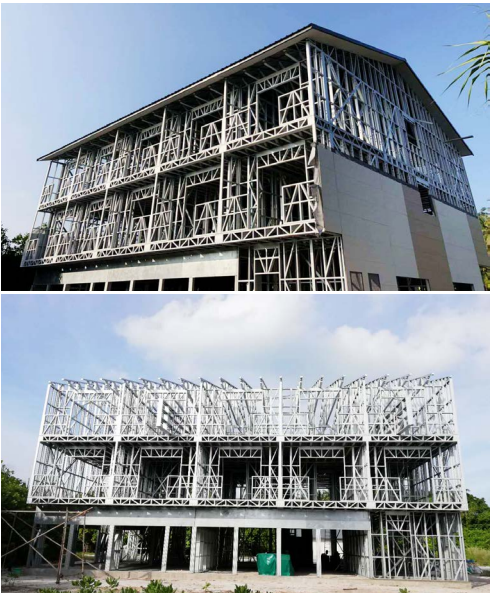


Maldives Project

Resort project in Maldives
This resort project in Maldives, consists of hotels, function houses, etc. Deepblue Smarthouse Prefabricated steel framing is quickly becoming the preferred building method among the world's leading owner/developers and construction firms.

Project info

Light Steel Frame	Hotel project
Maldives	711 sqm



Giorgetti House

The Giorgetti House is the perfect house design, big on space even when placed on a 'not so big' block. With a range of upstairs floor plans, this home will cater to your needs, whether you want a hotel-style master suite to chill out in or an extra bedroom to give your family room to grow.

Project info

Light Steel Frame	1 set villa
Uruguay	263 sqm



Gandario.House-E3 & E4

This light steel villa house has a new modern design, two floors up and down, with bedroom, kitchen, bathroom, living room, comfortable living environment, suitable for family living, vacation and rest, home stay, which is also good for rent Reasonable space design makes room utilization high; Comfortable and convenient living environment;Enjoy your family life.

Project info

Light Steel Frame	2 sets luxury Villas
Uruguay	224 & 241 sqm



Eolo .House

The house is unique due to being built on a hillside. The villa was built halfway up a mountain, and the foundation of the villa was supported by a chassis. The space between the chassis and the hillside formed a room that could be used as a garage, enough to accommodate three cars. The ground floor is 2 bedrooms with 2 bathrooms, 1 living room,1 kitchen and a large gazebo with mountain views.

Project info

Light Steel Frame	1 set luxury Villa
Uruguay	260 sqm



Olivos.House

The Olivos House is the perfect house design, big on space even when placed on a 'not so big' block. With a range of upstairs floor plans, this home will cater to your needs, whether you want a hotel-style master suite to chill out in or an extra bedroom to give your family room to grow. Flexible floor plans with multiple layout options to suit your family, whatever phase they're in Multiple living and entertaining areas on the second floor, so that everyone has space to do their own thing.

Project info

Light Steel Frame	Hotel project
Uruguay	228 sqm



M16 Malaparte.House

The simple design makes the whole house look very modern and blend in with its surroundings.Although the size of the house is not large, it is well furnished.The ground floor configuration can meet all your daily needs, having 2 bedrooms with 2 bathrooms,1 living room, 1 kitchen and a garage.The second floor is 2 bed room with 2 bathrooms and 2 large open air balcony. When you have recreational time, you can plant to show your begin ability.

Project info

Light Steel Frame	1 set luxury Villa
Uruguay	170 sqm



Sun.rafael.house

Luxury villa-Sun.rafael.house in Uruguay
The simple design makes the whole house look very modern and blend in with its surroundings.
With five oversized bedrooms and, there's room for the extended family to stay over.

Project info

Light Steel Frame	1 set luxury Villa
Uruguay	222 sqm



Lopez. House

The Lopez House is a natural retreat within a block home design. The open plan living areas create a sense of space and light, and the second story gives the family a secluded place to unwind.
•Designed fit perfectly on a wide narrow lot
•Enjoy time to yourself in the dedicated second-floor leisure spaces

Project info

Light Steel Frame	1 set villa
Uruguay	245 sqm



Harmony House

This light steel villa house has a new modern design, two floors up and down, with bedroom, kitchen, bathroom, living room, comfortable living environment, suitable for family living, vacation and rest, home stay, which is also good for rent Reasonable space design makes room utilization high; Comfortable and convenient living environment; Enjoy your family life.

Project info

Light Steel Frame	1 set luxury Villa
Modern	253 sqm



killrar House

For the family who loves to cook together, the modern house plans are centred around the spacious kitchen. Its clever design lets you unwind quietly in the upstairs bedrooms while the rest of the family hangs out in the living areas downstairs. For those with extra-large families, there's the option to add an extra bedroom downstairs. Large windows brighten the bedrooms and living spaces with natural lighting Entertain your friends and family in the spacious living areas .

Project info

Light Steel Frame	1 set luxury Villa
Modern	248 sqm



Grange House

Designed to impress, This modern home design is all about grand scale and proportions. With a perfect balance of shared living spaces and private retreats, and seamless transitions between inside and outside areas gives you the freedom to entertain the way you like, regardless of the size of your guest list or the weather.Appreciate the layout planning of the space Experience the elegant and novel design concept on this basis Getting more aesthetic imagination space.

Project info

Light Steel Frame	Hotel project
Uruguay	220 sqm



Sanguinetti.House

The two-floor villa with pure light steel structure is more environmentally friendly than ordinary concrete houses, reducing dust pollution in construction projects. The use of glass doors and windows makes the daylighting better, and the sound insulation and Pre resistance of walls are better than ordinary houses. Experience the elegant and novel design concept on this basis Based on the most advanced Light Gauge Steel Frame Technology.

Project info

Light Steel Frame	1 set luxury Villa
Uruguay	170 sqm



Cefalu. House

This light steel villa house has a new modern design, two floors up and down, with bedroom, kitchen, bathroom, living room, comfortable living environment, suitable for family living, vacation and rest, home stay, which is also good for rent Reasonable space design makes room utilization high; Comfortable and convenient living environment; Enjoy your family life.

Project info

Light Steel Frame	1 set luxury Villa
Modern	152 sqm



Vienna House

In this project, two villas are combined into a large villa to form two homes. The owners of the houses are neighbors of the two families who have good relations. The villas are scattered in different directions, with the two doors opening in different directions. Although the villas are connected together, they have their own space without being .

Project info

Light Steel Frame	2 sets luxury Villas
Modern	450 sqm

