

The logo for Peerless Products Inc. features a stylized red and white striped flag on the left, with the word "Peerless" in a large, bold, blue serif font. Below it, "Products Inc" is written in a smaller, bold, blue sans-serif font. A registered trademark symbol (®) is located at the top right of the word "Peerless".

Peerless[®] Products Inc

UNEQUALED. UNRIVALED. AMERICAN MADE.



*American-Made Curtainwalls,
Windows, & Doors*

Locations

Fort Scott, KS



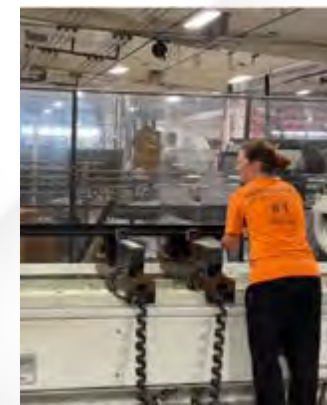
Iola, KS



Nevada, MO

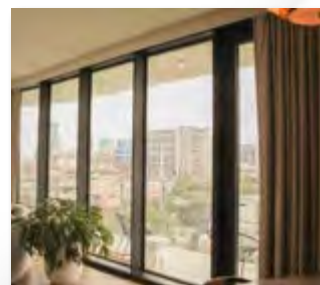
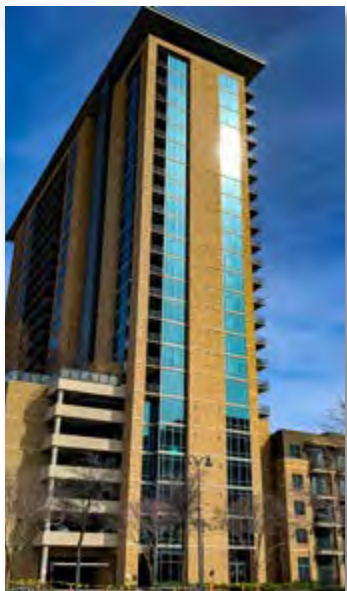


We Are Peerless



Projects

K-12 • Universities • Office • Historic • Retrofit
Multi-Family • Hospitality • Condominiums • Hospitals



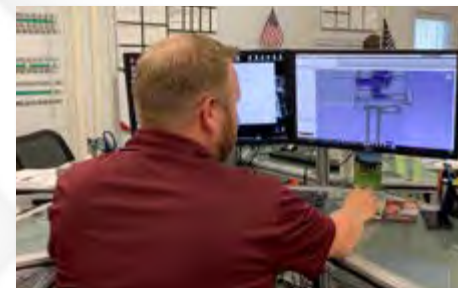
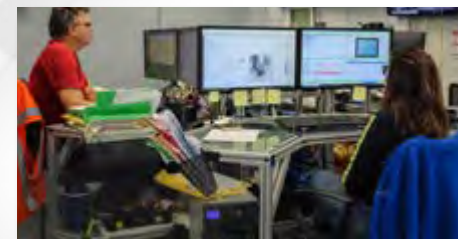
And Many More!

Talon Wall® Projects



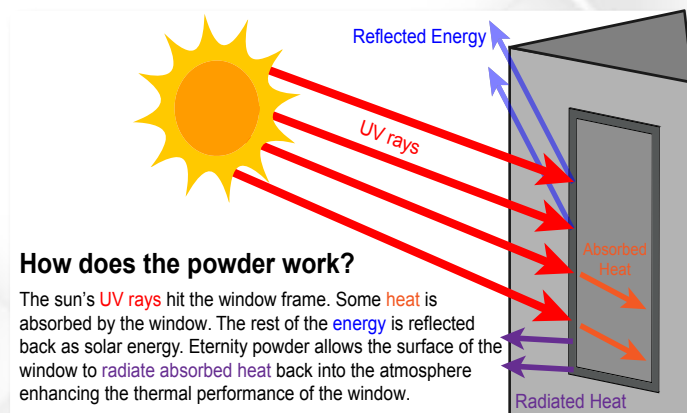
Services

Designing • 3D Prototyping • Testing • Engineering • Extruding
Fabricating • Powder Coating • Customer Service • Field Service



Technology Driven

Automation • R&D Testing Facility • Innovative Hardware
Automated Drawings • Cutting-Edge Technologies



Thermal Performance

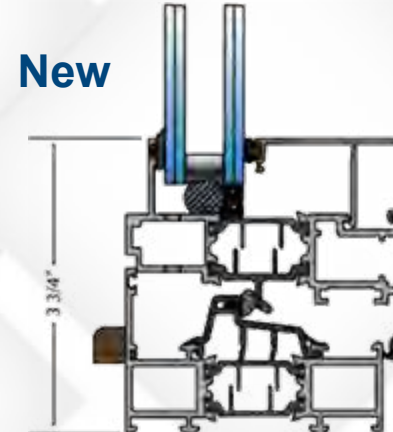
Passive House Institute of the United States (PHIUS) is a non-profit organization that's purpose is to make Net Zero building a mainstream market standard. Passive House sets strict standards for energy performance and buildings that meet PHIUS use 40-60% less energy. Look for the PHIUS logo throughout the book for certified products.

Old



- Thermal isolation of framing only.
- Channel Frame with suspended thermal break allows thermal convection to pass under window.
- 1/8" walls required for screw attachment of hardware.

New



- Controlled thermal convection at edge of framing.
- Hollow cavities & thermal isolation enhances insulation of system.
- Frame Hollows and Euro-groove hardware track provides superior strength.



Winter

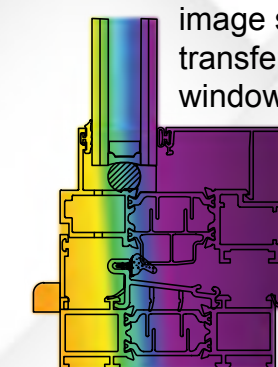
U-Value

U-value is a window's overall ability to resist heat flow. The lower the u-value the more heat a window will keep out during summer, and the more cold it will keep out during winter.

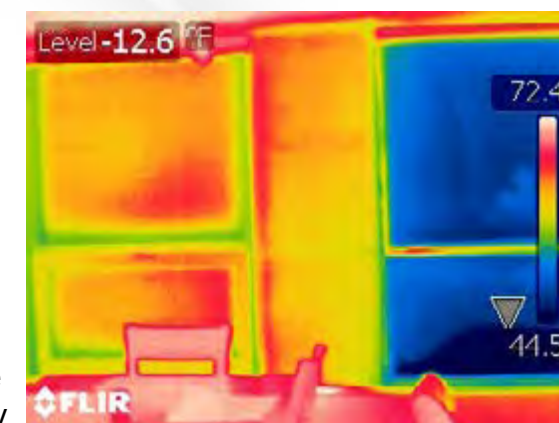
Solar Heat Gain Coefficient (SHGC)

SHGC measures how much heat is transmitted through a window. The lower the SHGC, the better the window resists heat flow through the window.

A G261 thermal image showing heat transfer through a window frame.



To the right is a thermal image from a side by side mockup installation of a new and old window taken from the interior of the building on a 30°F day.



Summer



Heat transfers through the thermal break and melts the chocolate at different degrees depending on the thermal strip.

CRF measures how well a window resists the formation of condensation on the inside surface.



Powder Finish

Powder Finish

The Peerless window system offers a durable two color powder coat finish, one color for the interior and one color for the exterior. Due to the versatility of aluminum there are many color options available. **Metallic colors available with an up-charge. Colors shown on this card match actual finish colors as accurately as possible, but may vary slightly from finished product.*

Painted-to-Match Removable Hardware

Preserving the aesthetic of a room, we powder coat all of our hardware to match the window frames for a seamless look. The Inswing window comes with a removable handle to reduce hardware damage during shipping, secure the building while it is being finished, and increase shipping efficiency with more windows able to be loaded on a single pallet.

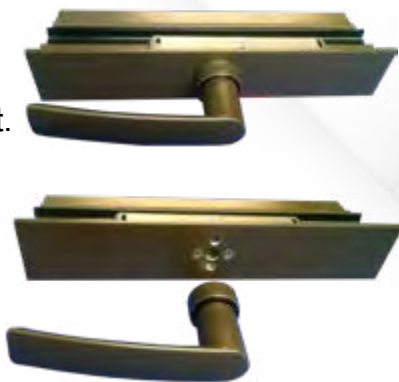
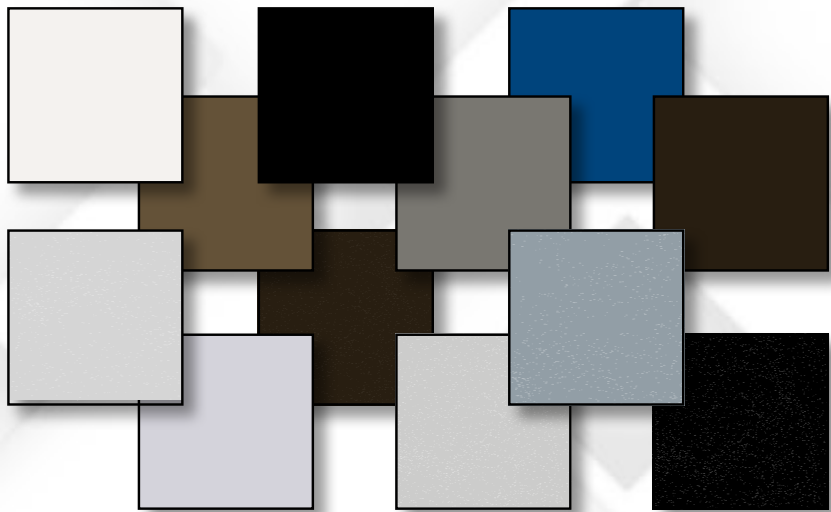
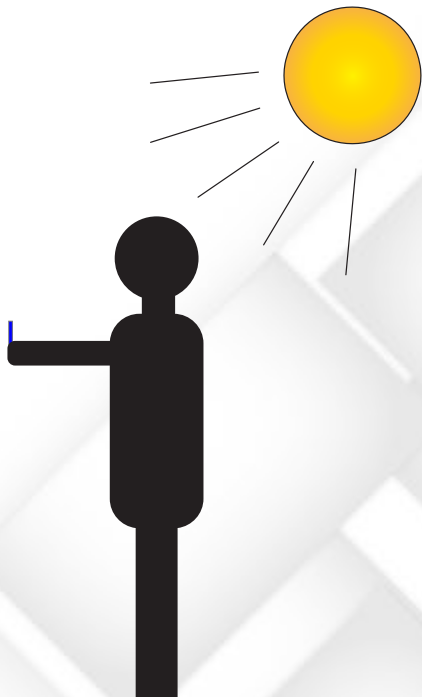
Anti-microbial Powder

How many times have you touched a window frame or handle without even thinking about it? Peerless anti-microbial powder coating is custom-formulated coatings that suppress the active growth of microorganisms & bacteria. Our powder supplier has done many lab tests that show a significant decrease in the number of living bacteria in 24 hours. Choosing products with an anti-microbial powder coat finish doesn't mean you will never have to clean your window sills again, but it is an easy way to make homes safer for everyone.



Recommended guidelines for viewing Powder Coat Chips:

- A bright, sunny day is the ideal time to inspect color chips
- Orient yourself with the sun behind your shoulders
- Hold the chips vertically and at arms length away from your body
- Turn them side to side & move at different angles



Warranties

At Peerless, we only use the highest quality powder coatings to keep your building looking new for years to come. Powder-coated paint provides a durable finish that prevents damage through production processes, installation, and end-use. Powder coatings have no harmful volatile organic compounds (VOCs), making it an environmentally friendly and safe approach to painting aluminum material. The architectural industry already recognizes the superiority of powder coatings by offering LEED credits when powder finishes are used.

To demonstrate the confidence of our powder-coated finishes, Peerless is offering a standard 20-year warranty (excluding southern and coastal climates) when using AAMA 2604 on the exterior and interior. AAMA 2605 powder coat finish can be used anywhere in the United States with a warranty of up to 30 years. AAMA is the American Architectural Manufacturers Association.

AAMA 2604



AAMA 2605



Powder Coat Characteristics and Properties		
	AAMA 2604	AAMA 2605
Weathering Period: (45° South, South Florida)	5 years	10 years
Allowable Color Change	<5 Delta E	<5 Delta E
Chalking	< No. 8	Max. rating #8
Gloss Retention	≥30%	50%
Dry Film Thickness	1.2 mils minimum	1.96-3.14 mils
Salt Spray Resistance (5% salt @100° F)	3,000 hours exposure	4000 hours exposure
Humidity Resistance	3,000 hours exposure	4000 hours exposure
Abrasion Resistance	1000 cycles >20 mg weight loss	1000 cycles 15.8 mg weight loss
Coating Erosion	<10%	<10%
Solvent Content	0%	0%

Dual color options available on interior & exterior



Glass & Safety

Did you know occupants are generally healthier when in a brighter environment? Sunlight causes your brain to produce serotonin which regulates mood and anxiety, reduces depression, and helps maintain bone health. More sunlight leads to increased occupancy comfort and satisfaction. Choosing the right glass package for your climate will directly impact the building's energy efficiency and comfortability. Cardinal Glass has been at the forefront of glass technology providing high-quality glass since 1962.

Standard Glass

1" IGU: 1/4" Cardinal 366 x 1/4" clear annealed

- Clear glass gives your project a classic look that will stand the test of time
- Cardinal glass offers a 366 coating that goes on the number 2 surface of a dual glazed IGU
- Cardinal 366 achieves the best energy performance for glass available in the industry today



• All IGU's come with preserve, an electrostatic film used to protect the glass

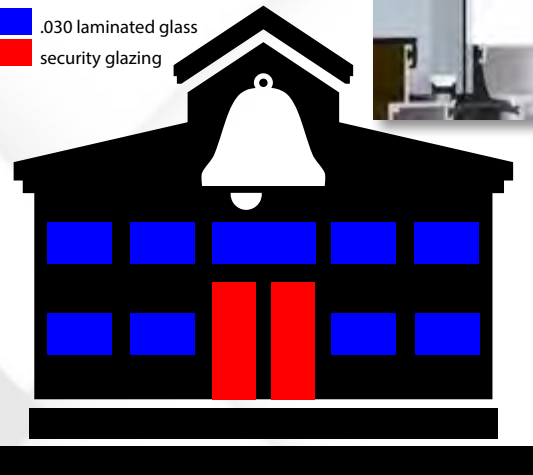
Laminated glass available

*Other standard glass options available



School Security with Laminated Glass

 .030 laminated glass
 security glazing



Security in schools is all about keeping unwanted individuals out of the building long enough for police to get on scene, typically for 6 minutes. Utilizing laminated glass can help keep intruders from breaking through windows and entering a building.

- Spall shield is not typically needed for this application
- Operable windows can be secure while still allowing for emergency egress, so occupants have the option to flee if they need to
- Large, beautiful unobstructed windows can be safe while still providing natural daylight for an enhanced learning environment

Releasable Limit Arm on Operable Windows



- Meets Fair Housing codes
- For emergency egress to escape
- You can release arm to clean the exterior
- Arm can be mounted at head for increased security
- Only available on inswing casements
- Having only fixed windows could keep you from preserving human life.

Emergency Egress is Necessary!

[Watch our Video!](#)



ADA

The Americans with Disabilities Act (ADA) became law in 1990. The ADA is a civil rights law that prohibits discrimination against individuals with disabilities in all areas of public life. Including: jobs, schools, transportation, and all public and private places open to the general public. The purpose of the law is to make sure people with disabilities have the same rights and opportunities as everyone else. When designing windows Peerless keeps everyone in mind, ensuring our windows meet standards such as ADA and FHA helps us achieve that. Casement windows will use the standard ADA long handle with 90° concealed hinge. Project out windows will use an OS Operator, short arm, and 4 bar hinge. Terrace doors will use the standard ADA door handle.

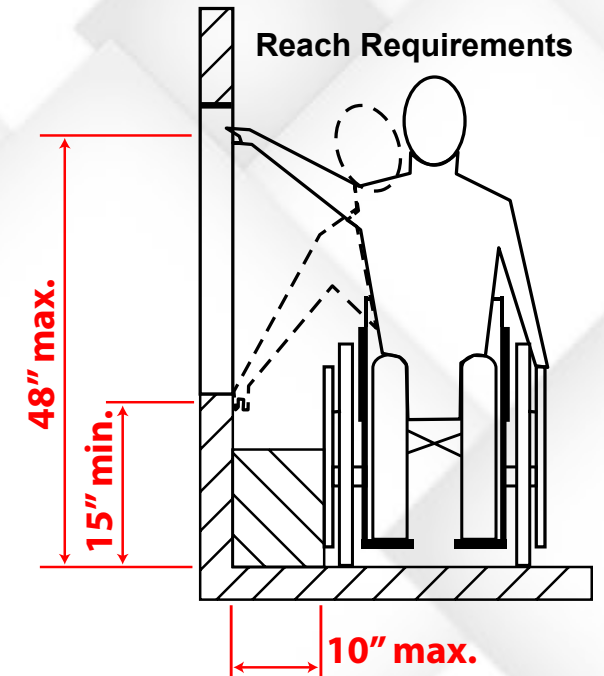
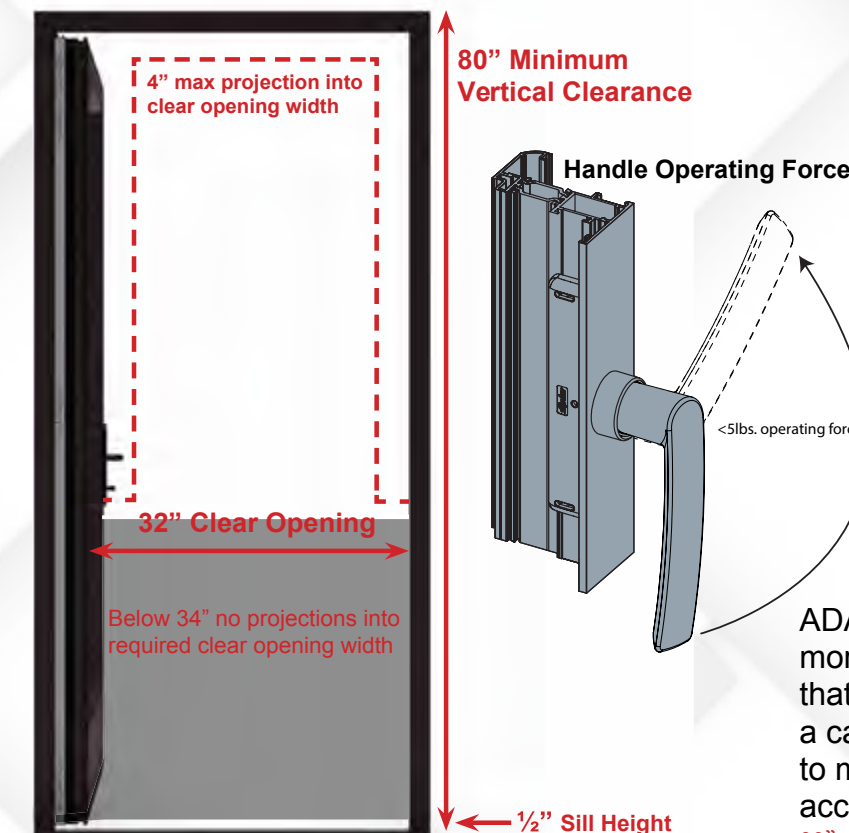
Door Requirements

Doors have different requirements than windows to accommodate wheelchairs, walkers, and other assistant machinery. There needs to be an 80" minimum vertical clearance, 32" clear opening, and 1/2" sill height. Something not everyone would think about is how handles project into the door opening, anything that projects into the clear opening cannot be more than 4", and there can be no projections below 34". All of these requirements help ensure anyone can use the door.

Accessible Hardware



Handles need to be operable without tight twisting, grasping, or pinching.



ADA handle hardware needs to operate at no more than 5 pounds of force, we can achieve that specifically on inswing products. Using a casement inswing gives you the flexibility to move the handle to make the window accessible. *Project out windows can be no shorter than 30". All windows can be no larger than 84" tall.

Talon Wall®

Revolutionized Curtain Wall System True Innovation for the Façade Industry



GET A GRIP ON COST!

Double your facade revenue while decreasing your crew size. Peerless Products' **TALON WALL®** installs with one-third of the crew size required for a typical window wall or curtain wall system with an enclosure rate greater than the most efficient curtain wall systems available.

The **TALON WALL®** Curtainwall System manufactured by Peerless Products Inc. is a revolutionary patented, fully engineered, unitized and factory glazed curtain wall system with fixed and operable components. Available through Peerless outside the Chicago area. The Talon Anchor® system accommodates complex geometry in all three planes, plus it's easy, efficient and non-obtrusive. **TALON WALL®** systems are far less complex to fabricate and install than all other competitive systems, by requiring less training and skill level than any other typical system. Each **TALON WALL®** system has only two components to install – the finished unit and single multi-unit pieces of floor trim. That's It! No loose parts are scattered on job sites to get lost or damaged. The anchor is built into the unit 'as shipped' to your site!



TALON WALL®
in 1.5 total
man hours
per unit!



The **TALON WALL®** CURTAINWALL SYSTEM has been fully laboratory tested and certified to the most stringent air, water, thermal, seismic, fire, and acoustic testing regimens in the industry!

Features & Benefits



- No anchor brackets or hardware fixtures are required to secure to the structure.
- Allows up to 1-1/4" construction tolerance in all axes and 3/4" vertical live load movement capability.
- Continuous fully sealed heavy horizontal frame members and factory applied insulation blocks in vertical members at each floor level assures the highest acoustic performance between floor levels.
- Meets or exceeds project specifications with class leading air, water, thermal, seismic, structural, fire, and acoustic performance.
- Tested and certified to full 3 hour F and T ASTM E2307 standards with no field applied firesafing insulation, intumescent membranes, fire sealant, or mullion wraps.
- Tested and certified to NFPA 285 fire test standards with full aluminum composite panel infills.
- Needs no layout or pre-setting of unit anchors at mounting locations to floor slabs.
- Low profile framing members at all conditions means much higher daylight to occupants.
- Allows immediate completion of interior finishes at the floor below the active installation processes. No more "temporary roofs", or water and mold damage to finishes below.
- Extremely robust member designs can accommodate wide modules and unsupported double spans with no additional internal steel reinforcing or 'kicker' supports at mid-spans.
- Supports your LEED goals by using an environmentally friendly, proprietary, reusable metal racking system for delivery to your site. This shipping method allows the complete unload, distribution, and specific placement of units to floors on a highrise building by two crew members in two hours or less.
- Metal racking system also eliminates dumpster and cleanup charges for wood crates and packing material. These racks are returned for re-use on your next delivery.
- Includes an option for a proprietary high performance 'zero sightline' concealed ADA/ANSI compliant operable window system for natural ventilation requirements.
- No floor slab notch-outs or grout fill are required for anchors.
- Improves thermal performance by allowing your design to increase typical module sizes while reducing your facade cost per square foot.



Manufactured under License: U.S. Patent Nos. 9,752,319; 10,094,111; 10,202,764; 10,233,638 and 10,724,234 Canadian Patent No. 2932177W

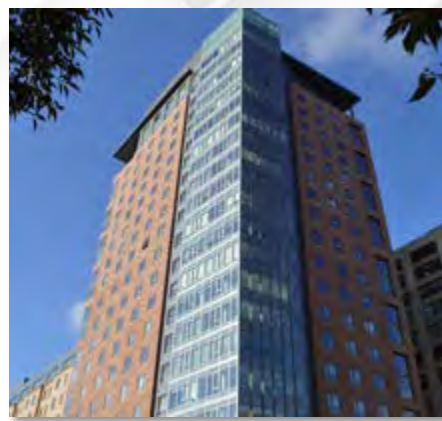
Window Series

Peerless windows are categorized by the thermal strips into different series, our G200, G500, G600, and G800. We can easily change out different co-extruded frame options onto any of our different windows series to meet your installation and performance needs. Depending on your project needs we can mix and match window series on your project for the most cost effective option. For more information on window models and technical details visit the Peerless Design Studio on our website!



G200

U-value: 0.32



G500

U-value: 0.16



G600

U-value: 0.34



G800

U-value: 0.32



Impact Systems



Blast Systems

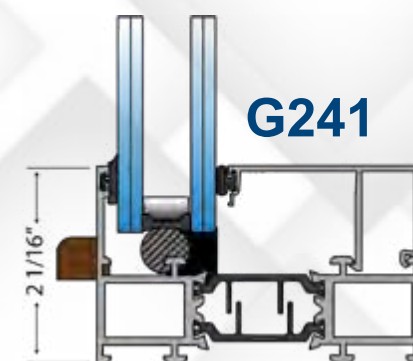


Fixed Windows

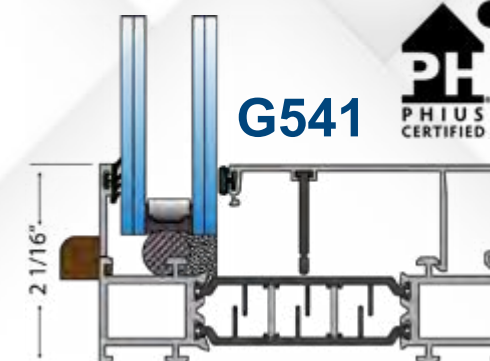
Watch our Video!

Peerless Fixed Windows are some of the most energy-efficient windows available in the market, with a U-value range of 0.14-0.31! The fixed windows work great all over the nation, from low rise to high rise buildings. Multiple units can be assembled into one master frame at the manufacturing facility, saving time on labor in the field. An optional flange or integral trim design can be co-extruded to make installation in the field efficient and less costly. Low-E coating on the glass with heat absorption powder finish will keep you cool in the summer and warm in the winter no matter where you live. Pair our Peerless fixed windows beside an inswing operable window to gain fresh air and the ability to clean from the interior of the building.

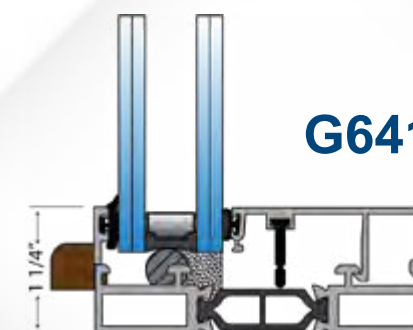
Performance Data	G241	G541	G641	G841
Frame Depth	3.25"	4.25"	3.25"	1.625"
Typical Wall Thickness	0.08	0.08	0.08	0.06
AAMA Rating	AW 90	AW 90	AW 110	CW 65
Test Size	60" x 99"	60" x 99"	60" x 99"	36" x 72"
Structural PSF	135 psf	135 psf	165 psf	97 psf
Air CFM/SF	<0.1 CFM/SF	<0.1 CFM/SF	<0.1 CFM/SF	<0.1 CFM/SF
Water PSF	15 lb	15 lb	15 lb	12 lb
U-Value U-Factor	0.22-0.25	0.14-0.32	0.24-0.34	0.40
STC	32-48	33-48	32-40	29-39
OITC	25-37	26-37	25-31	22-31



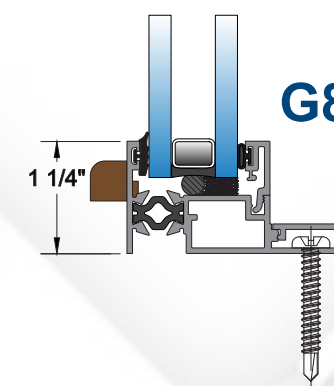
G241



G541



G641



G841 Endurance

*All performance values are lab results

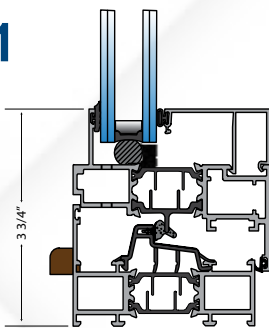
Casement Windows

Watch our Video!

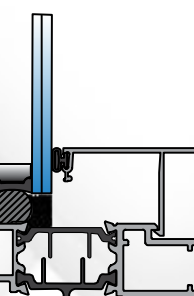
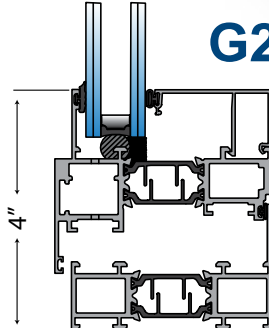
Peerless inswing casement windows are available with right and left-hand hinges depending on design preferences. The design also allows for two different finishes, one on the exterior and a different one on the interior. Inswing casement windows come equipped with a 4" releasable limit for fall protection while also giving you fresh air or the ability to egress in an emergency. Peerless casement windows are fully thermally broken for ultimate air, water, and thermal performance.

Performance Data	G261-G265 Inswing	G251-G255 Outswing	G561-G565 Inswing	G551-G555 Outswing	G661-G665 Inswing	G651-G655 Outswing
Frame Depth	3.25"	3.25"	4.25"	4.25"	3.25"	3.25"
Typical Wall Thickness	0.08	0.08	0.08	0.08	0.08	0.08
AAMA Rating	AW 90	AW 100	AW 90	AW 100	AW 100	AW 90
Test Size	48" x 72"	36" x 60"	48" x 72"	36" x 60"	36" x 60"	36" x 60"
Structural PSF	135 psf	150 psf	135 psf	150 psf	150 psf	135 psf
Air CFM/SF	<0.1 CFM/SF	<0.1 CFM/SF	<0.1 CFM/SF	<0.1 CFM/SF	<0.1 CFM/SF	<0.1 CFM/SF
Water PSF	15 lb	15 lb	15 lb	15 lb	15 lb	15 lb
U-Value U-Factor	0.22-0.35	0.22-0.35	0.14-0.32	0.14-0.32	0.22-0.35	0.22-0.35
STC	32-42	32-42	32-42	33-42	32-40	32-40
OITC	25-35	25-31	25-31	25-31	25-34	25-32

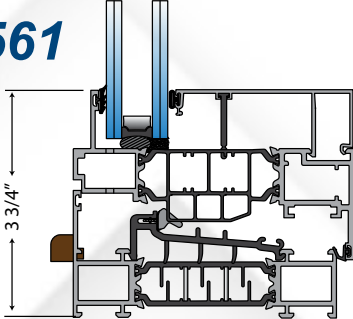
G261



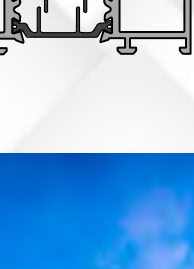
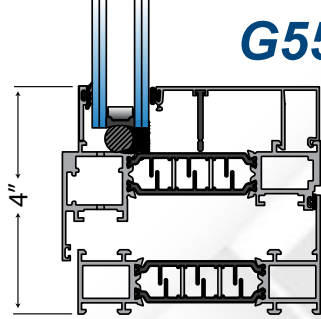
G251



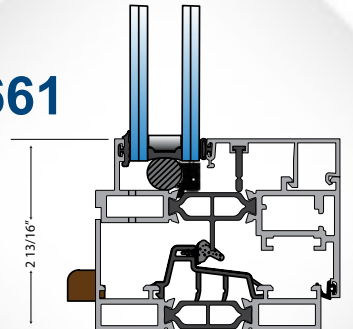
G561



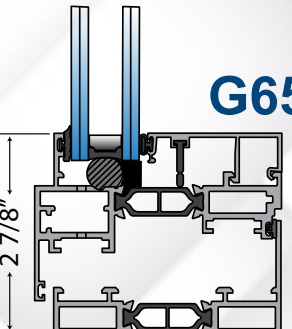
G551



G661



G651



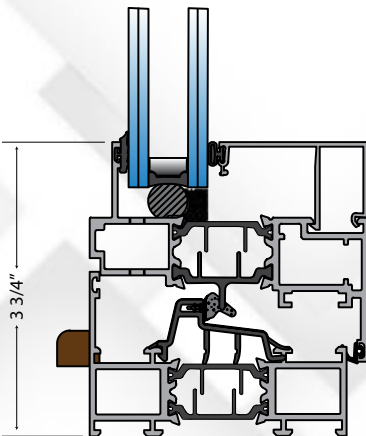
Dual Action Windows

Watch our Video!

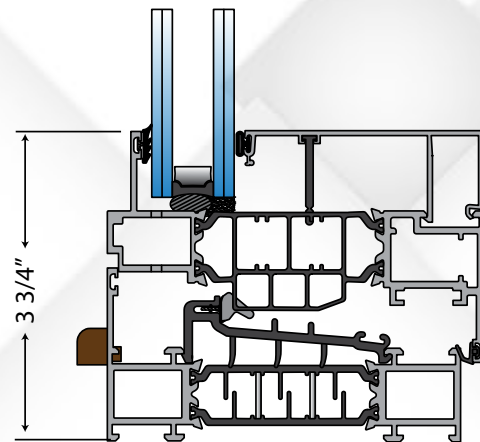
Peerless dual-action windows, also known as tilt turn windows are high-performance inswing windows that allow for larger sizes than typical casement windows. Our dual action series has been present on many projects that achieved LEED certification due to its energy efficiency. Compression sealed for maximum air and water performance. Peerless dual-action windows are ideal for many projects, from slab-to-slab window wall applications to punched openings. The innovative tilt-in function gives you the ability to get fresh air into your building. At the same time, the full opening capability lets you clean the window from the interior of the building.

Performance Data	G2T1-G2T5	G5T1-G5T5
Frame Depth	3.25"	4.25"
Typical Wall Thickness	0.08	0.08
AAMA Rating	AW 50	AW 70
Test Size	60" x 99"	60" x 99"
Structural PSF	75 psf	105 psf
Air CFM/SF	<0.1 CFM/SF	<0.1 CFM/SF
Water PSF	15 lb	15 lb
U-Value U-Factor	0.30	0.19
STC	38-40	38-46
OITC	31-33	31-40

G2T1



G5T1



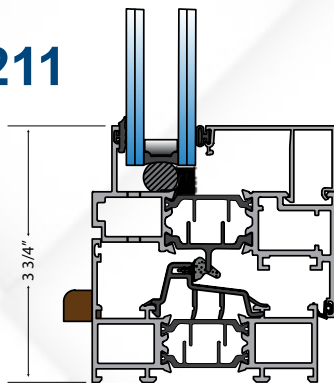
Projected Windows

Watch our Video!

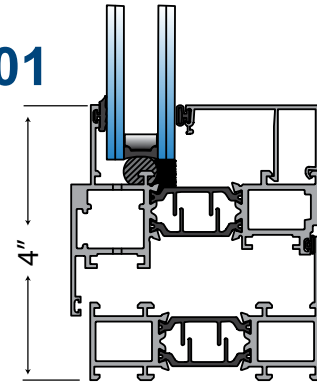
Peerless projected windows come in inswing hopper or outswing awning configurations with the ability to put multiple windows into one master frame. Peerless projected windows are fully thermally broken & compression sealed for ultimate air, water, and thermal performance. These windows are ideal for many applications, including punched opening, historic, replacement, and new construction projects.

Performance Data	G211 Hopper	G201 Awning	G511 Hopper	G501 Awning	G611 Hopper	G601 Awning
Frame Depth	3.25"	3.25"	4.25"	4.25"	3.25"	3.25"
Typical Wall Thickness	0.08	0.08	0.08	0.08	0.08	0.08
AAMA Rating	AW 100	AW 100	AW 100	AW 100	AW 100	AW 90
Test Size	60" x 36"	60" x 36"	60" x 36"	60" x 36"	60" x 36"	60" x 36"
Structural PSF	150 psf	150 psf	150 psf	150 psf	150 psf	135 psf
Air CFM/SF	<0.1 CFM/SF	<0.1 CFM/SF	<0.1 CFM/SF	<0.1 CFM/SF	<0.1 CFM/SF	<0.1 CFM/SF
Water PSF	15 lb	15 lb	15 lb	15 lb	15 lb	15 lb
U-Value U-Factor	0.22-0.35	0.22-0.35	0.14-0.32	0.14-0.32	0.22-0.35	0.22-0.35
STC	32-42	32-42	32-42	32-42	32-40	32-40
OITC	25-35	25-31	25-31	25-31	25-34	25-32

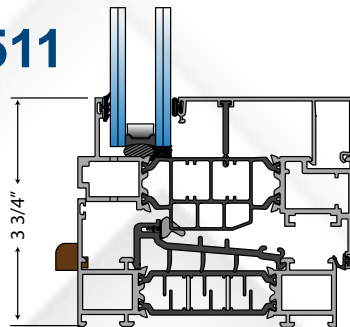
G211



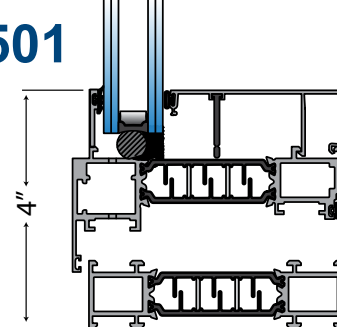
G201



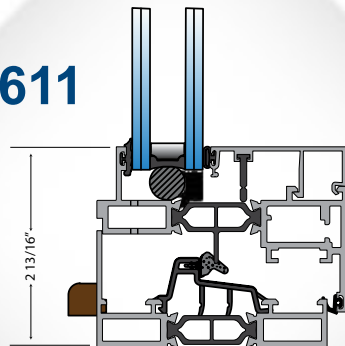
G511



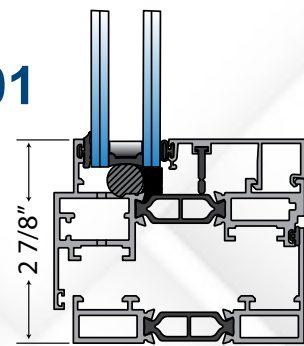
G501



G611



G601



Historic Retrofit Offset Windows

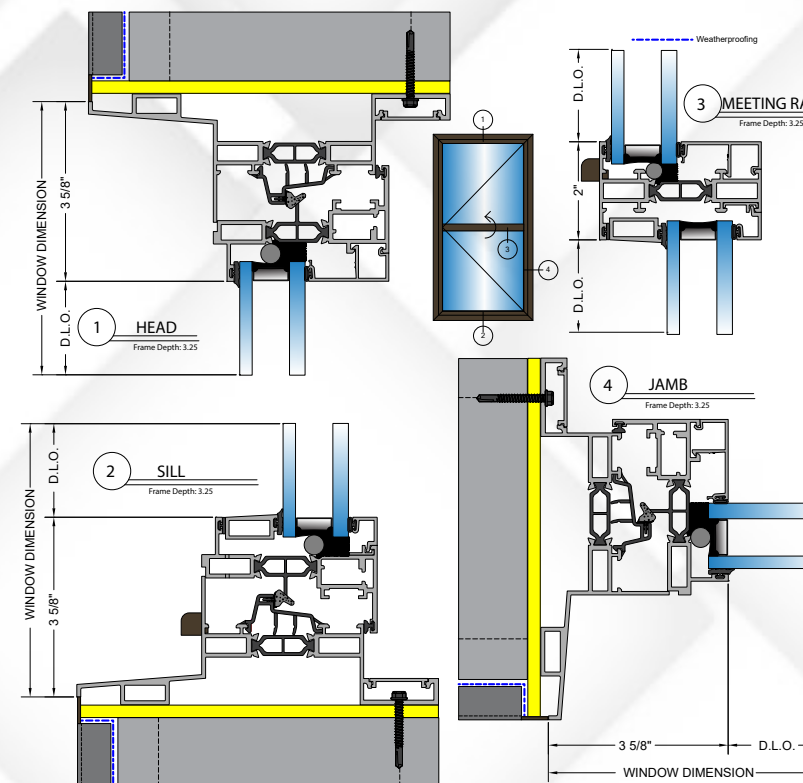
Peerless carries a full line of historic/retrofit products for your requirements, whether you are restoring the beauty of a historic landmark to its original state or creating a historic architectural style for a new construction building. A full line of products that will enhance any historic architectural style, including a floor-to-ceiling arch window system with grids or a simulated Double Hung Fixed window system. Single and Double Hung windows were prevalent for a long time and are often replaced with newer versions of the old technology. We designed a casement window that mimics the sight line of hung windows but maintains all the benefits of a casement window. Casement windows are all compression gasket sealed and perform better on air, water, and structural test while still meeting the 5lb ADA operating force.

Watch our Video!

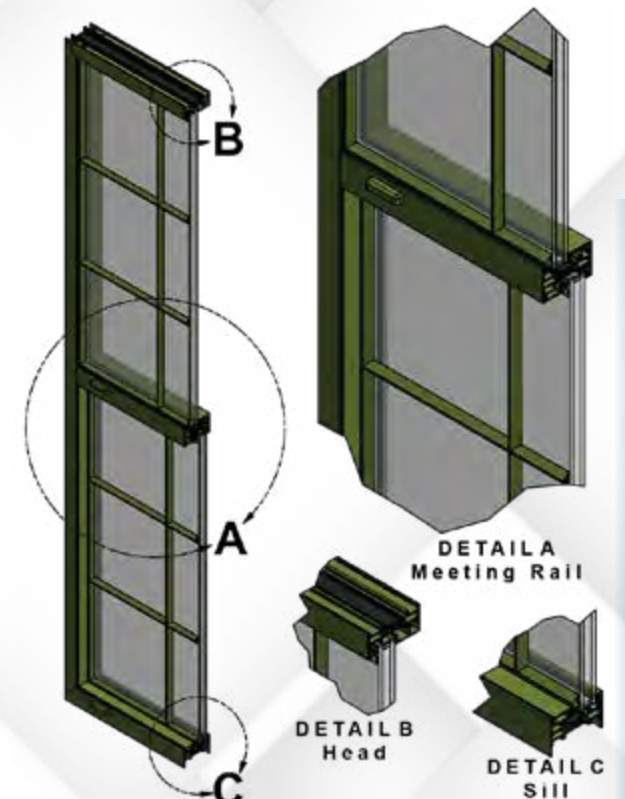
Performance Data	G600 Offset Casement
AAMA Standard/Spec	A440-17
AAMA Rating	AW-PG100-C
Standard Test Size	36"x60"
Air CFM @ 1.5 psf	<0.1 cfm/sf
Water Test Pressure	15 psf
Structural PSF	150 psf
U value	0.34
U-Value (with Black Low E Powder Finish)	0.30
STC	32-40
OITC	25-32



G661 Offset Casement



G642 Offset Fixed

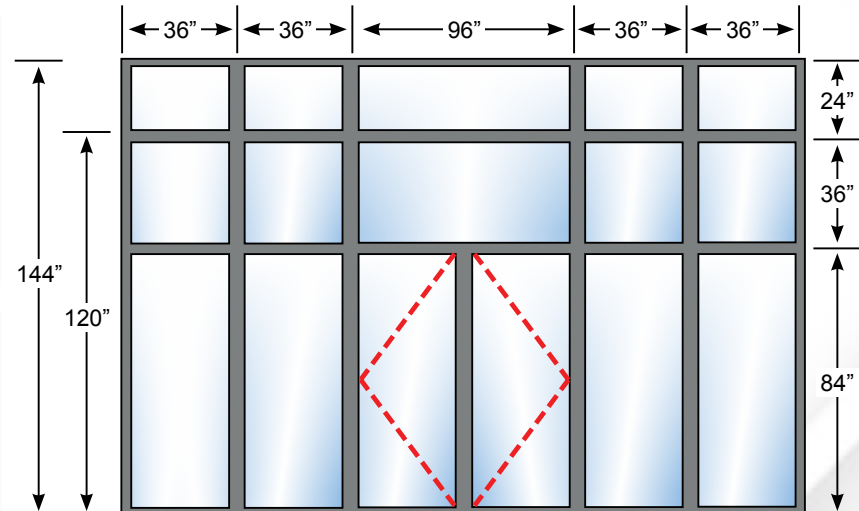
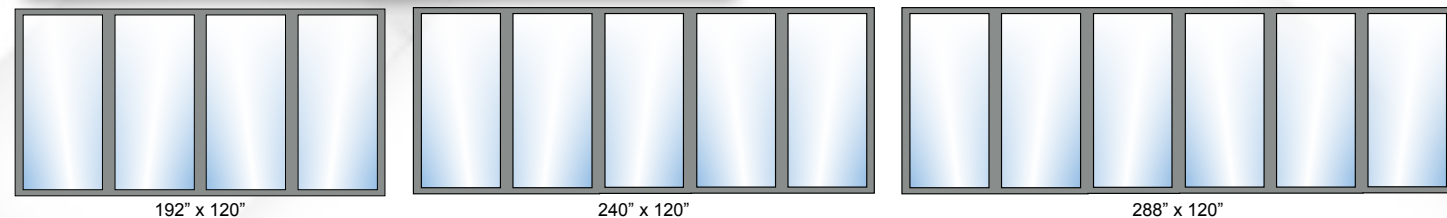
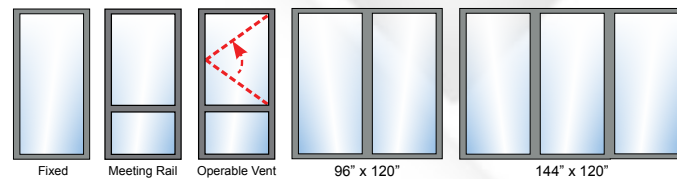


Unitized Windows

Watch our Video!

- Can span 24' wide with one opening
- Meets 5 lb. ADA operating force with no twisting or grasping of hand or wrist (excluding doors)
- Large vents allow for increased fresh air ventilation to meet requirements
- Enhanced air, water, thermal, structural, and sound tests
- Compression gaskets and mitered corners provide optimal seal
- Antimicrobial powder finish on interior of building to slow germ spread
- Increased meeting rail size to hide interior walls

Fully Open with
Releasable Limit Arm!



Unitized Window Timeline Benefits

Traditional Receptor and Subsill Installation with three workers take roughly 3 hours for a 6' wide opening. Unitized Storefront or Window wall Installation with three workers takes roughly 30 minutes with a 56' wide opening.



← The amount of product installed with traditional system



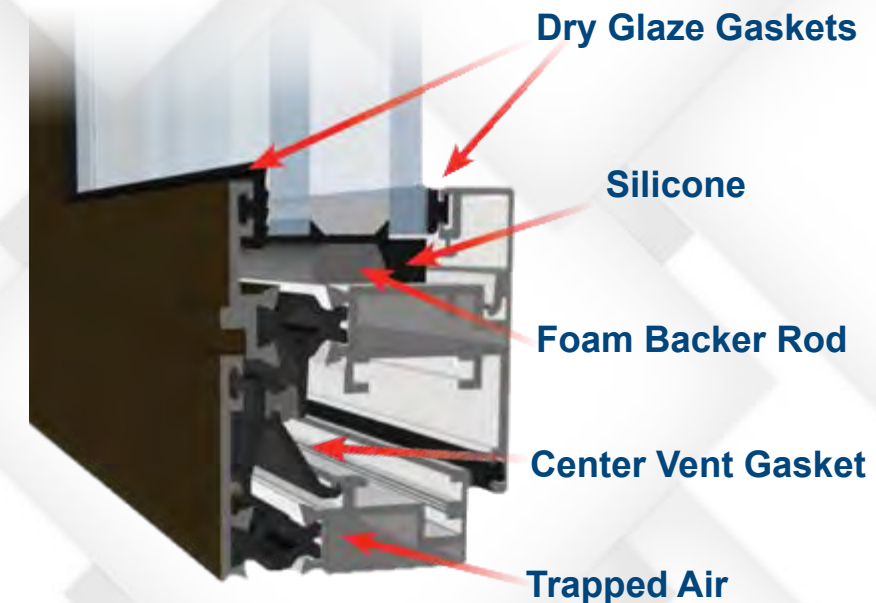
↑ Over 9 times the product Installed in 30 Minutes!



Commercial Windows

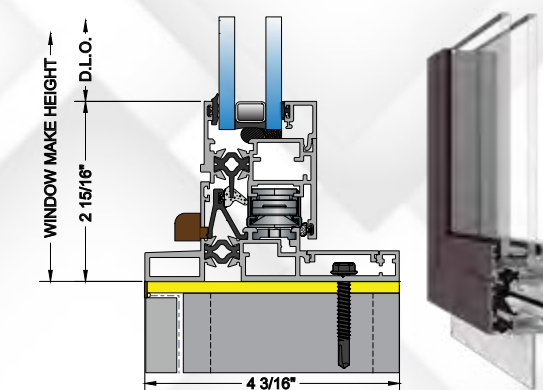
Watch our Video!

We created a window specifically geared toward low-rise wood structures while keeping the energy efficiency of our architectural windows. Our G800 series holds a CW or commercial rating according to the Fenestration and Glazing Alliance (FGIA). Our commercial line goes above and beyond the typical CW window being life-cycle tested which tests the durability of our product ensuring that a window will last for many years.



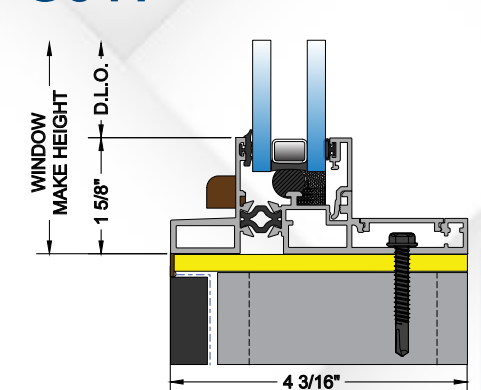
Performance Data	G800 Fixed by Casement
AAMA Standard/ Spec	A440-17
AAMA Rating	CW-PG70-C
Standard Test Size	72" x 72"
Air CFM @ 1.5 psf	<0.1 cfm/sf
Water Test Pressure	12 psf
Structural Load Test Pressure	105 psf
U value	0.40
U-Value (with Low E Powder Finish)	0.30
STC	35-39
OITC	21-31

G863 *Available in various dimensions



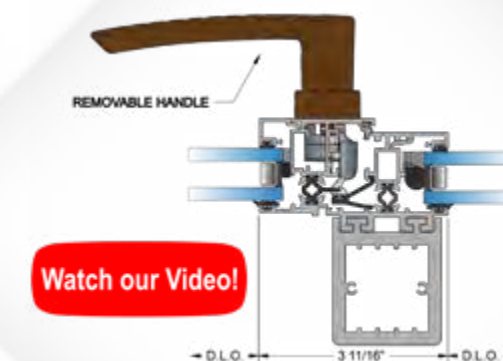
*Hurricane options available

G841



Why choose aluminum over vinyl & fiberglass?

- Lower u-values than fiberglass windows due to pockets in frames
- Bigger sizes for daylighting and better views
- No cladding is needed in aluminum windows
- Huge range of colors with up to a 30 year warranty for powder coat finish
- Aluminum windows can withstand higher wind pressures; windows will need less steel to meet high design pressures
- Compression gaskets and center vent gaskets aid in air and water performance on aluminum windows
- Option for co-extruded accessories for easy, quick installation
- Aluminum windows do not warp or sag from extreme weather conditions



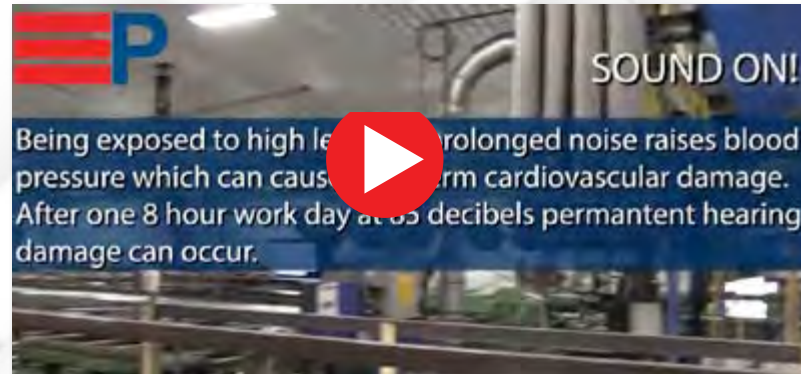
Watch our Video!

*All performance values are lab results

Specialty Products

Acoustic Windows

Did you know exposure to high noise levels or repeated exposure to noise can lead to permanent hearing loss or raised blood pressure leading to cardiovascular damage? Listen to the video to hear how much of an impact an 18-decibel difference is. Many different options have run the market for acoustic windows throughout the year, from heavy laminated glass, triple pane windows, thicker spacers, etc.



Hurricane Windows



Peerless offers a wide variety of Hurricane Impact Products to meet the growing demand for high-performing Impact windows and doors. Our Hurricane Resistant products meet the stringent AAMA 506 specifications, including ASTM 1996 and 1886 for large missile impact requirements. Our products are approved for statewide use in Florida, according to FBC and meets the TAS 201, 202, and 203. Also, many of our products are tested as Hurricane Blast products to meet the needs of Coastal Blast Projects. For specific size and test reports please get with your regional application engineer.



Blast Windows



Peerless offers the Aluminum Architectural rated Blast series, which meets DoD UFC 4-010-01 and can achieve U values as low as .15 which is unequalled in the industry. Peerless Blast products are anchored inward to allow the product to flex thereby absorbing energy and preventing transfer to the wall for increased structural integrity. Peerless windows and doors are tested to ASTM F1642.

Peerless offers innovative framing options which allow for increased absorption and can drastically reduce the total number of field anchors required for installation. Blast glazing utilizes laminated glass, and typically uses an interlayer of .030.



Psych Windows



The Peerless Protector Series has been designed for facilities where the occupant's safety and welfare is a primary concern.

The P541 Window System also provides the most advanced energy efficient window system available in the industry today. The Protector

Series has passed the Drop Test for the AAMA 501.8-12, Standard Test Method for Determination of Resistance to Human Impact of Window Systems Intended for Use in Psychiatric Applications. The AAMA standard has been designed to test a window system withstanding impacts of up to 2,000 ft-lbs.



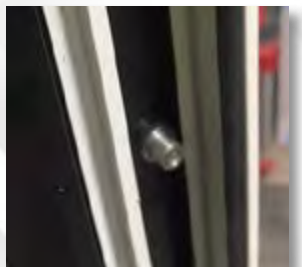
Micro-vent

Watch our Video!



The Micro ventilation Hardware still allows the window to be fully operable. This all in one vent system has an extra position on the Peerless handle that allows a seal break for airflow.

- Allows for the largest daylight opening available
- No additional frame pieces
- No increase in the sight line
- Allows for a Fully Operable Window
- Design allows for a small seal break to allow airflow but still maintains water management



Sun Shade

Sunshades can be adapted to almost any structure in sunny, warm climates. They are particularly useful in housing projects, offices, and administration buildings. Sunshades are not all the same and may require engineering calcs to proof out our bracket attachment design.



Custom Receptor w/Extended Fin



Custom 12" fins proved to be a challenge that our teams were up to; fins explicitly integrated into the window system and not the building itself can save time and costs. If the fins were attached to the building's exterior, many things such as waterproofing and installation would have impacted the work schedule.



Door Systems

French Door • Folding Door • Terrace Door • Tilt & Slide Compression Door



New Product Alert!



Terrace Doors

Watch our Video!



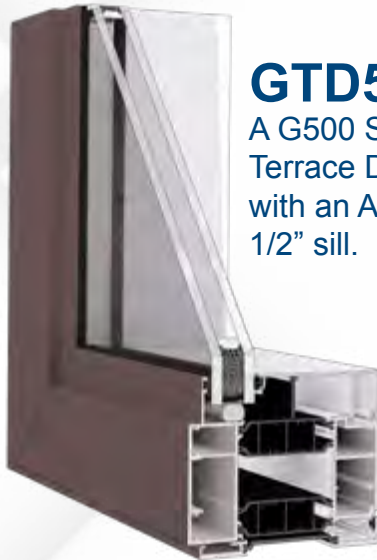
- Typical Applications:**
- Ideal for condominiums and apartments
 - Should be used on patios or balconies (not for entrance)
- Installation Accessories:**
- Standard 1/2" ADA sill with AAMA rated 12 psf water performance
 - Terrace doors equipped with Eurogroove locking hardware
 - Many locking cylinder options available
 - Multiple receptor, subsill, and mullion options available
 - Standard or custom panning available

We take pride in providing terrace doors that anyone can use. Doors have different requirements than windows to accommodate wheelchairs, walkers, and other assistant machinery. Doors need to have an 80" minimum vertical clearance, 32" clear opening, and 1/2" sill height. Something not everyone would think about is how handles project into the door opening. Anything that projects into the door opening cannot be more than 4". There can be no projections below 34". All of these requirements help ensure anyone can use the door. Peerless terrace doors come thermally broken and compression sealed for the best air, water, and energy efficiency. Hurricane rated doors are tested at 48" x 120", rated at AW80 .

Performance Data	GTD2 Inswing	GTD2 Outswing	GTD5 Inswing	GTD5 Outswing
Frame Depth	3.25"	3.25"	4.25"	4.25"
Typical Wall Thickness	0.08	0.08	0.08	0.08
AAMA Rating	AW 100	AW 100	AW 100	AW 100
Test Size	48" x 96"	48" x 96"	48" x 96"	48" x 96"
Structural PSF	150 psf	150 psf	150 psf	150 psf
Air CFM/SF	<0.1 CFM/SF	<0.1 CFM/SF	<0.1 CFM/SF	<0.1 CFM/SF
Water PSF	12 lb	12 lb	12 lb	12 lb
U-Value	0.35	0.35	0.32	0.32
STC	28-40	28-40	28-40	28-40
OITC	27-33	27-33	27-33	27-33



GTD2
A G200 Series
Terrace Door
with an ADA
1/2" sill.



GTD5
A G500 Series
Terrace Door
with an ADA
1/2" sill.



Tilt & Slide Compression Door

The Tilt and Slide Compression Door is a versatile product that provides performance as well as modern functionality. With the turn of an ergonomic handle, you can tilt the door inwards for gentle ventilation or slide the door horizontally to let the outside world into the room. The Tilt-And-Slide Compression Door is completely compression sealed for optimal air and water performance. Acoustic glass aids in noise reduction for superior end-user comfort.

Performance Data	
AAMA Rating	AW 65
Water PSF	12 psf
U-Value	.35
Air Infiltration	<0.1 cfm/sf
Frame Depth	3-1/4"

Product Features:

- 100% Thermally Broken
- Dry Glaze Glass System
- Exterior-Interior colors can differ
- Powder Coat Finish
- Cardinal Glass

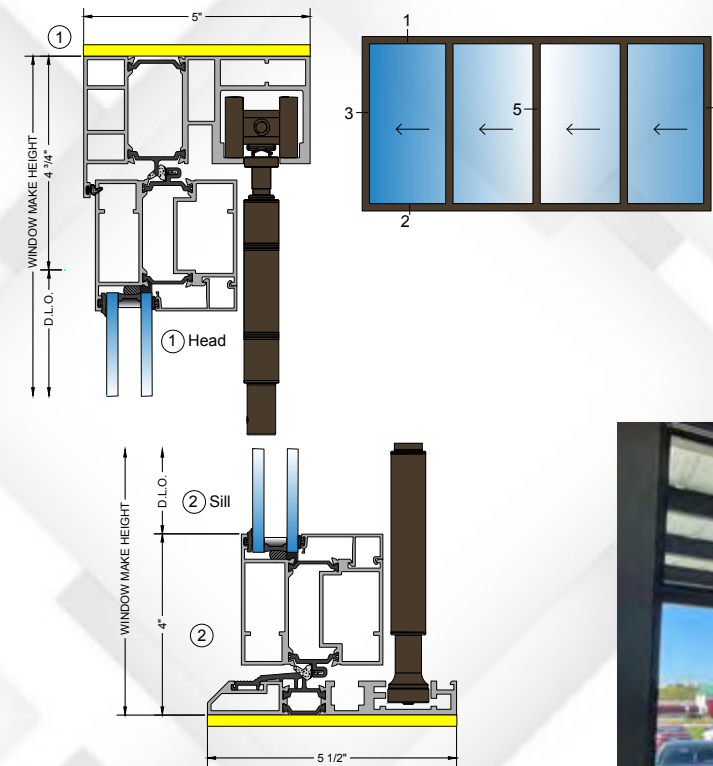
Watch our Video!



Folding Doors

Watch our Video!

Bring the outside in for more room for entertaining with our folding door! It is unlike any other door in the industry! Our folding door is fully thermally broken and uses compression gaskets to ensure top air, water, and thermal performance. With the lowest sill in the industry at 3/4", you can certainly achieve 1/2" ADA requirements with finish floor heights. The folding door meets many aesthetic needs with painted-to-match hardware for a seamless look. Enhance the end-user experience by pairing your folding door with acoustic glass to keep street noise out. **pre-assembly dependent on size*



Performance Data	
AAMA Rating	CW65
Structural load test pressure	97 psf
Air Infiltration CFM/SF	<0.1 CFM/SF
U-Value U-Factor	0.45
SHGC Solar Heat Gain Coefficient	0.28
VT Visual Light Transmittance	0.43



French Doors

Watch our Video!

Peerless Aluminum Inswing French Doors compliment a variety of architectural styles for your patio, balcony, or courtyard. The French Doors are fully compression sealed for maximum air and water performance. Acoustic glass aids in noise reduction for superior end-user comfort. We design beauty and high performance into every Peerless French Door.

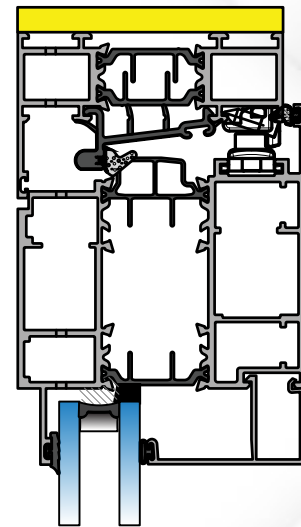
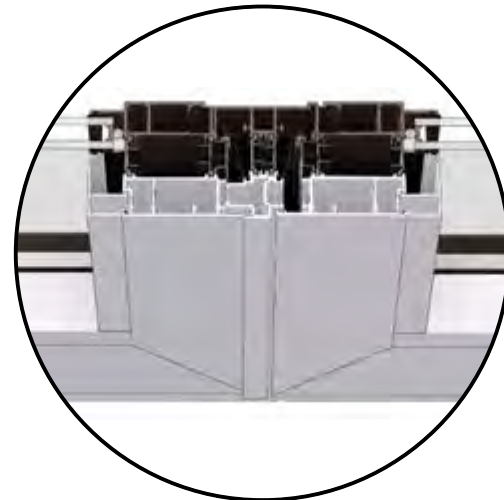
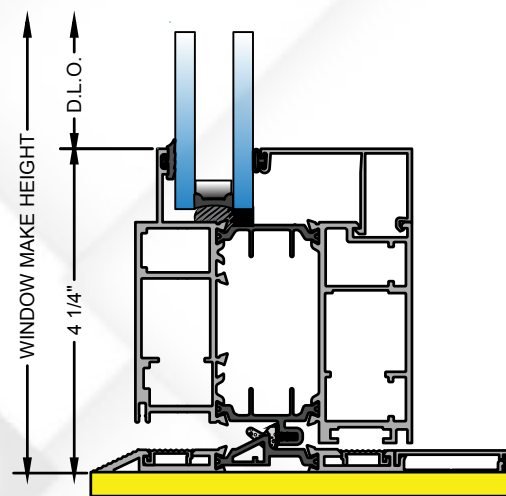
Performance Data	
Certification	AW-PG40-ATD
AAMA Specification	A440-08
Test Size	80" x 96"
Air Infiltration	<0.1 cfm/sf
Water Test Pressure	12 psf
Structural psf	60 psf



Sill

Postless Leaf Connection

Head



Full Opening Capability for Max Fresh Air!

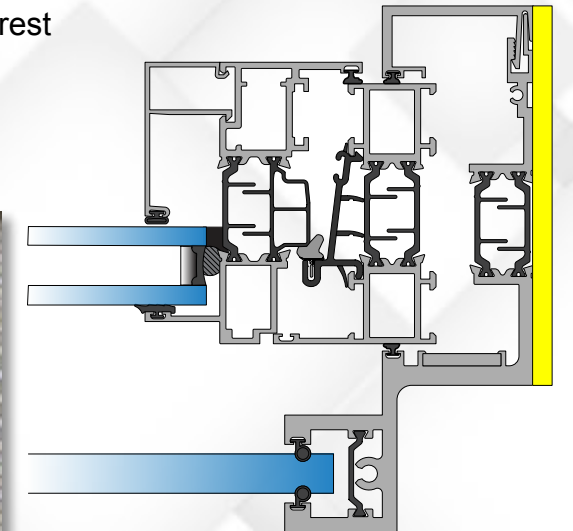


Juliet Balcony

Watch our Video!

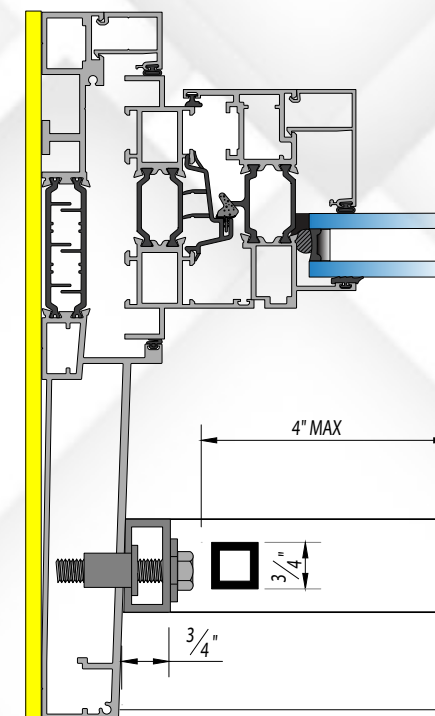
Glass Rail Juliet Balcony

- Clean aesthetic to make your building stand out from the rest
- Meet fresh air requirements without expensive equipment
- Easy connection onto the receptor system
- Saves cost of installing full balcony
- Glass rail uses Sentry Glass™ lami for ensured safety



Picket Rail Juliet Balcony

- Provides a clean exterior to the building
- Helps achieve fresh air requirements
- Co-extruded onto the receptor system
- Saves cost of installing full balcony

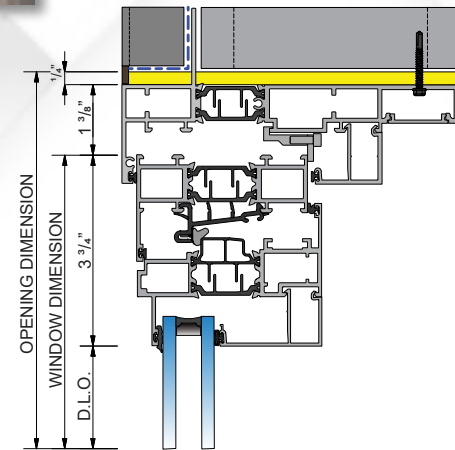
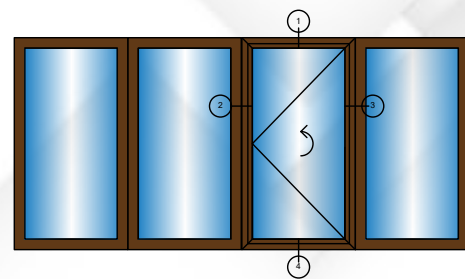


Performance Calculations Balcony capabilities tested at 8' width at standard balcony performance calculations. Project specific testing available upon request.

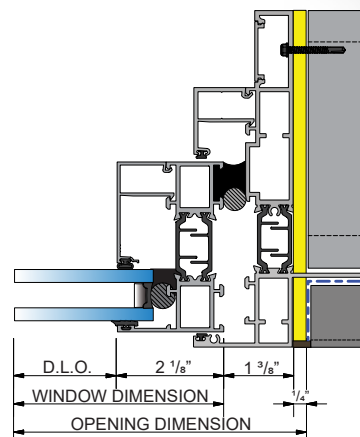
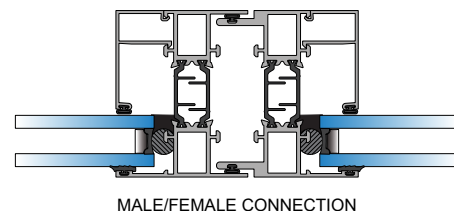
Dry Install Receptor System



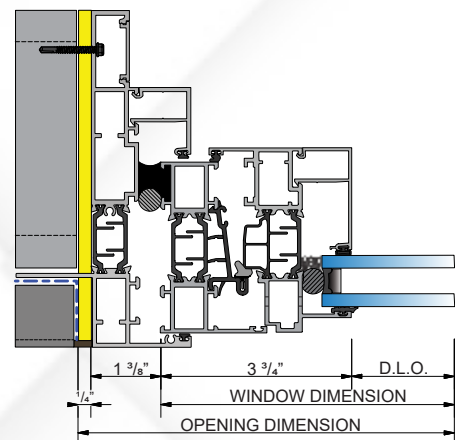
The DIRS uses a dry glaze system similar to our windows for maximum air and water performance from a receptor system with the ability to check the sealant before a water test. The Peerless Dry Install Receptor System is able to achieve a 15lb water and .01 cfm/sf air performance due to our innovative design and sealing methods. Peerless recommends sealing at the bottom and up 8" at the jamb to achieve these results.



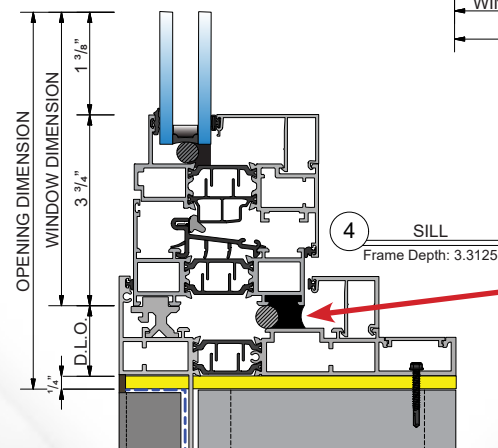
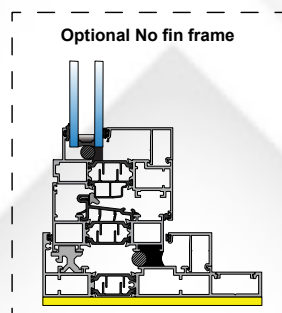
1 HEAD
Frame Depth: 3.3125



3 JAMB
Frame Depth: 3.3125



2 JAMB
Frame Depth: 3.3125

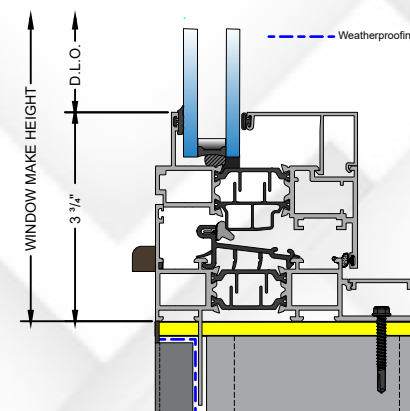


4 SILL
Frame Depth: 3.3125

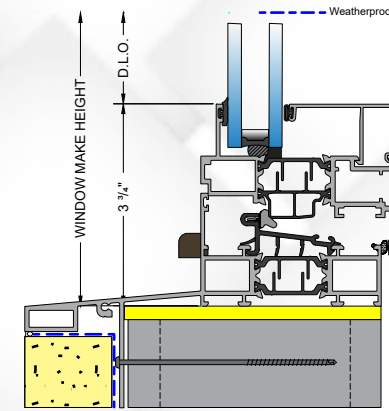
No blind seals



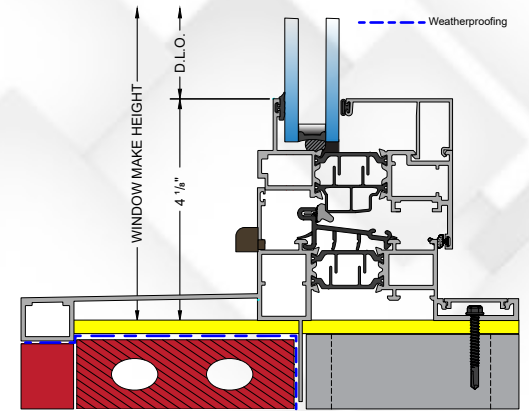
Co-extruded Accessories



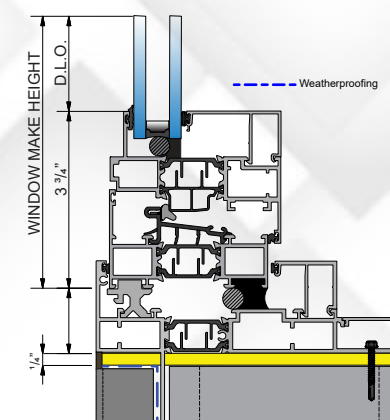
G200 Nailfin Frame with
Integral Trim



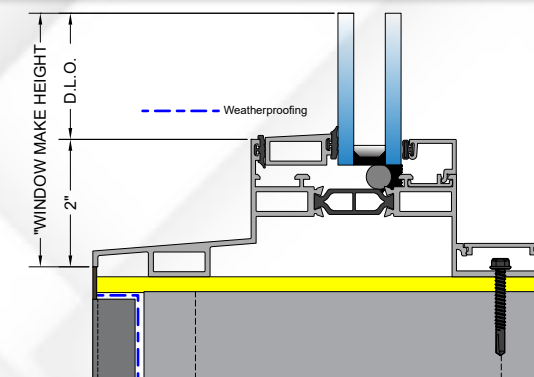
G200 Extended Stucco
Nose with Nailfin



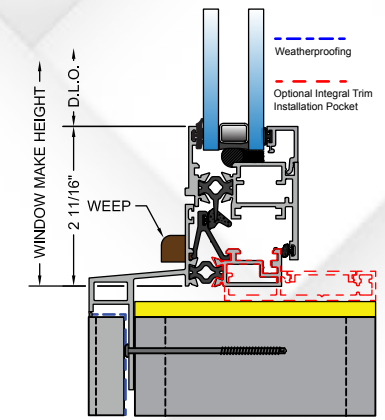
G200 Extended Panning Nose
with Nailfin and Integral Trim



G200 DIRS Receptor with
Nailfin and Integral Trim



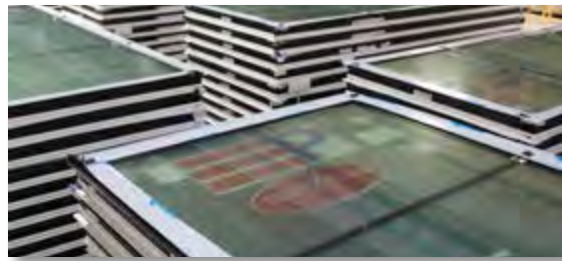
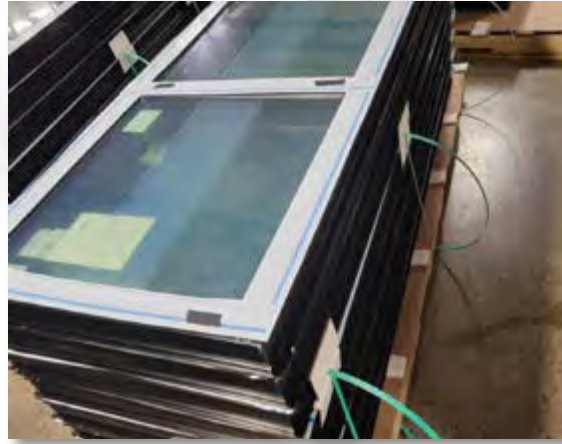
G600 Extended Panning
Nose with Integral Trim



G800 Extended Stucco Nose
with Nailfin & Integral Trim

Benefits of Peerless Co-Extruded Accessories

- Pre-drilled installation holes to meet engineering calculations
- Faster installation time than other separate installation options
- Saves money on time and labor expenses
- Ability to get small aesthetically pleasing exterior sight line
- Reduces the number of extra parts and pieces required for field installation
- No labor intensive field trimming when accessories are co-extruded on window frame



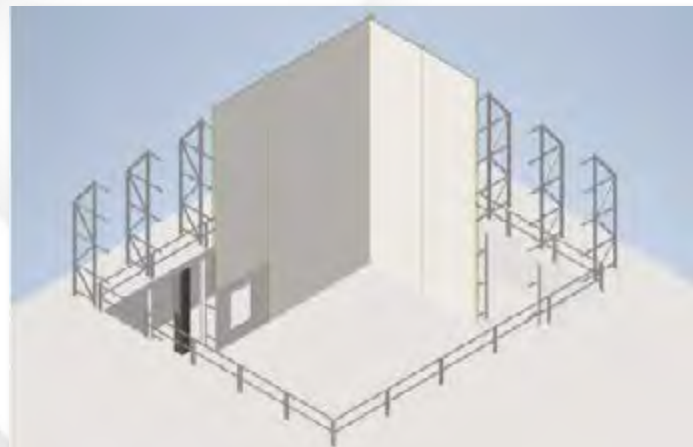
In-House Testing

Windows that do not pass field water tests can cause project delays, get in the way of other trades, and cost a lot of money retesting. We engineered our windows with a dry glaze and weep system that is more reliable than older technologies. The primary gasket is EPDM hybrid extrusion with a secondary seal of a backer rod and silicone. Using a rubber gasket as a primary seal ensures no risk of UV damage to the sealant over time. If water gets in the window system, it will flow out through the weep. Peerless windows come with a painted-to-match weep hood to blend in seamlessly with the building and protect from debris entering the weep. To see a water test at the Peerless facility before windows get sent to a job site, click this link to watch: <https://youtu.be/cpljiwmGpp8> If the glass in the window gets broken, our dry glaze system makes interior reglazing simple and easy. We have a quality team with over 30+ years of experience if you need guidance on replacing the glass.



3-Story Test Wall

With the addition of our Nevada, MO facility we have built a state-of-the-art testing facility with a 90' two story test wall and are putting in a 3-story modular testing area. This will allow full scale wall testing.



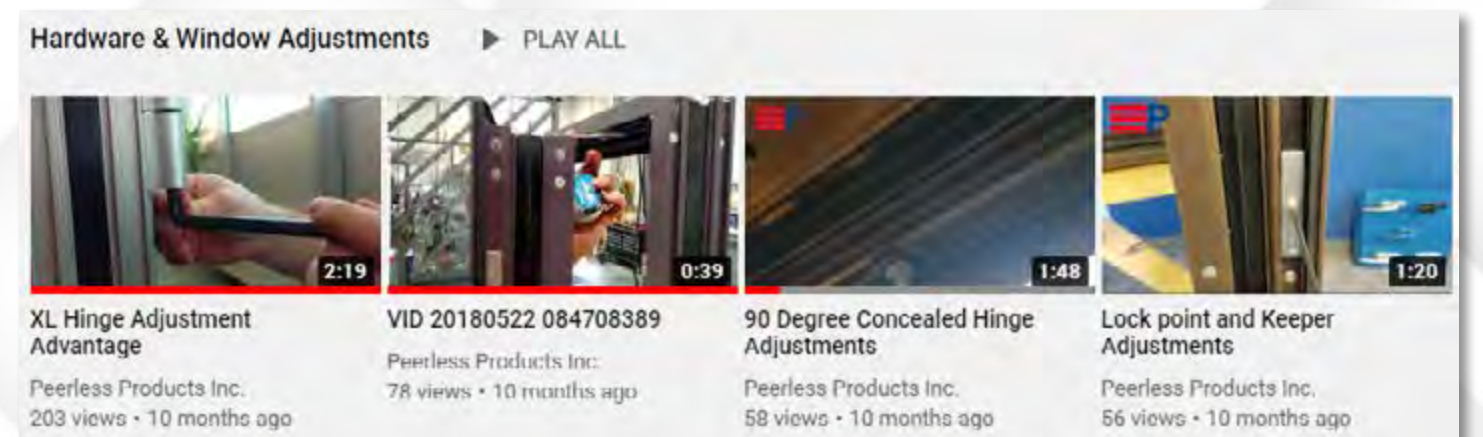
Quality & Customer Service

Many products could get installed incorrectly, leading to failed water tests, project delays, and an out-of-budget project. An owner's rep or an architect is typically the person who notices a product with an issue on the job site. When the item is not quickly understood or resolved, it can lead to multiple units installed with the same issue. Good communication with the manufacturer can avoid delays and reputation by understanding and resolving the issue right when it first gets noticed by the installer. One big complaint you hear all the time is, "It is hard to reach someone." Or, "The automated system takes forever to get you what you need." We have dedicated regional customer service reps whom can be reached at almost any time. We take pride in being a hometown style provider that promptly answers when you call. We have customer service agents responsible for providing your service in your area to avoid the potential of having multiple contacts. To find your contact visit: <https://www.peerlessproducts.com/Products/Care-and-Maintenance>



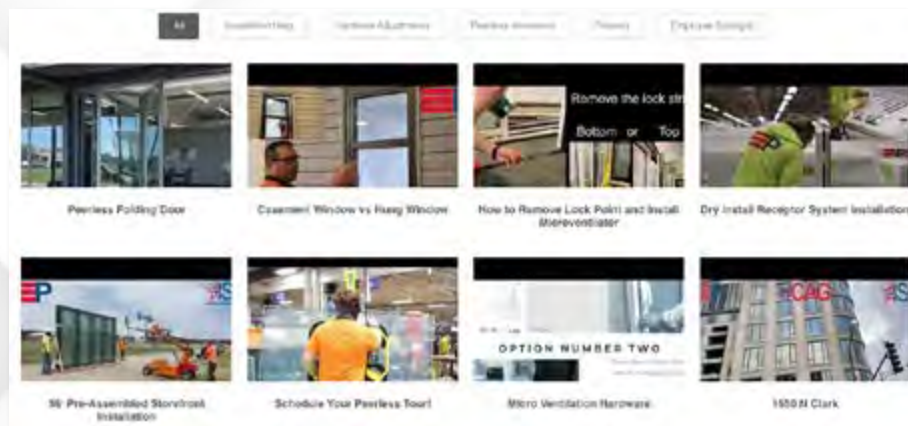
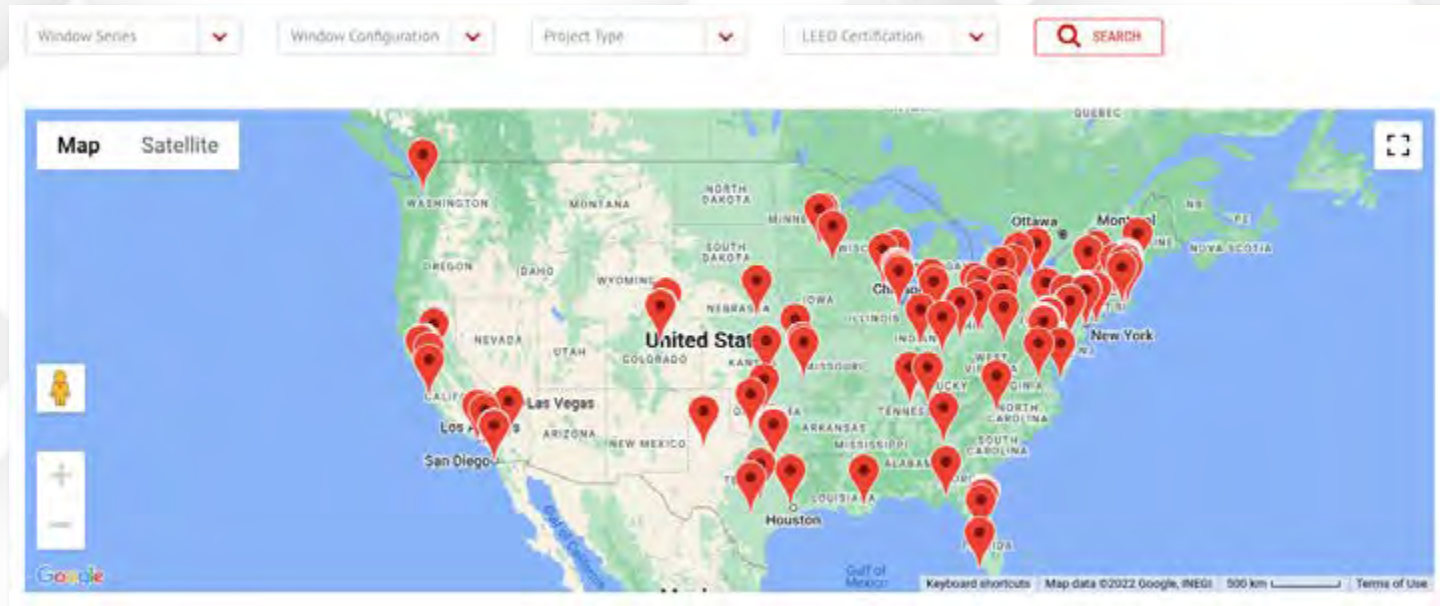
What is the most common causes of needing to contact Peerless Customer Service Team?

The top cause is the units' operation, which is usually resolved quickly with slight tweaking. We have chosen adjustment friendly hardware to ensure ease of use for our customers. Peerless has a library of instructional YouTube videos available to teach field adjustments: <https://www.youtube.com/playlist?list=PLaY8XqTEsPTapRcvebq13h8z-zgSKID1q> If you need additional assistance, your Peerless customer service rep is available to join on a video call to resolve any issues you may be having.



PeerlessProducts.com

We offer many different tools on our website to try and help narrow down what windows to use on your projects. Filter by window series, configuration, project type, or LEED certification to see past projects



We showcase a full range of videos including, hardware adjustments, new product, past project, and installation help videos in our video gallery. Easily filter using the topics across the top of the page.

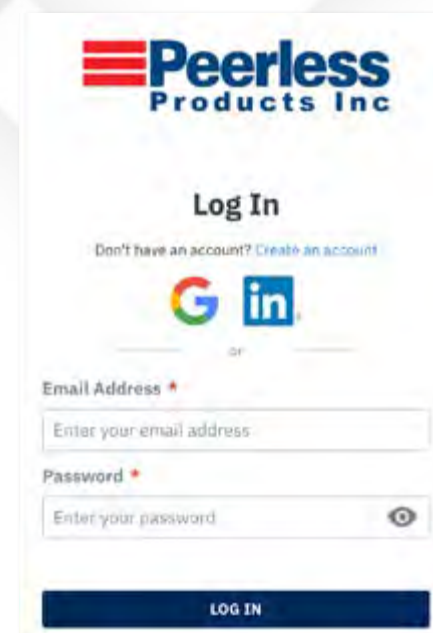
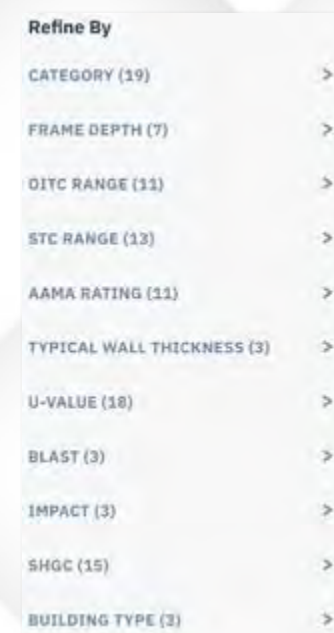
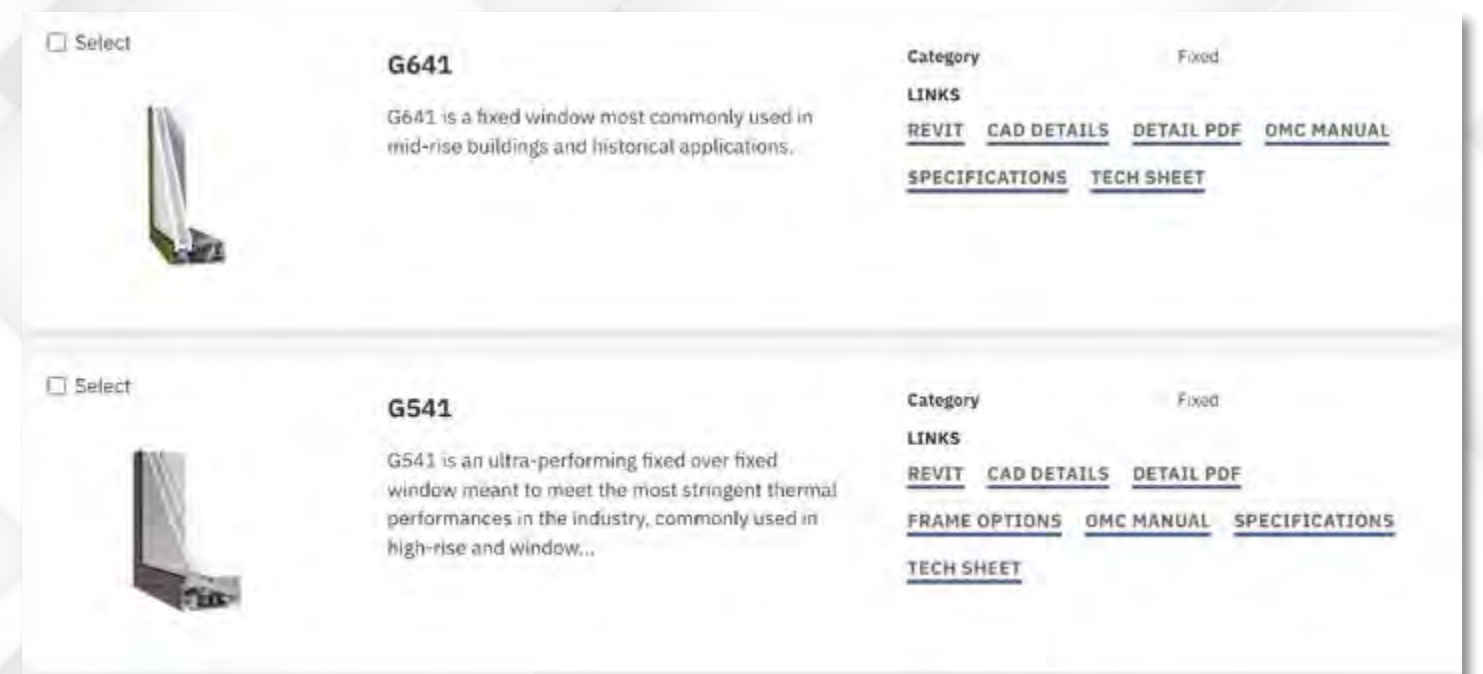


You will also find our Peerless blog with hot topics, educational items, and industry news.

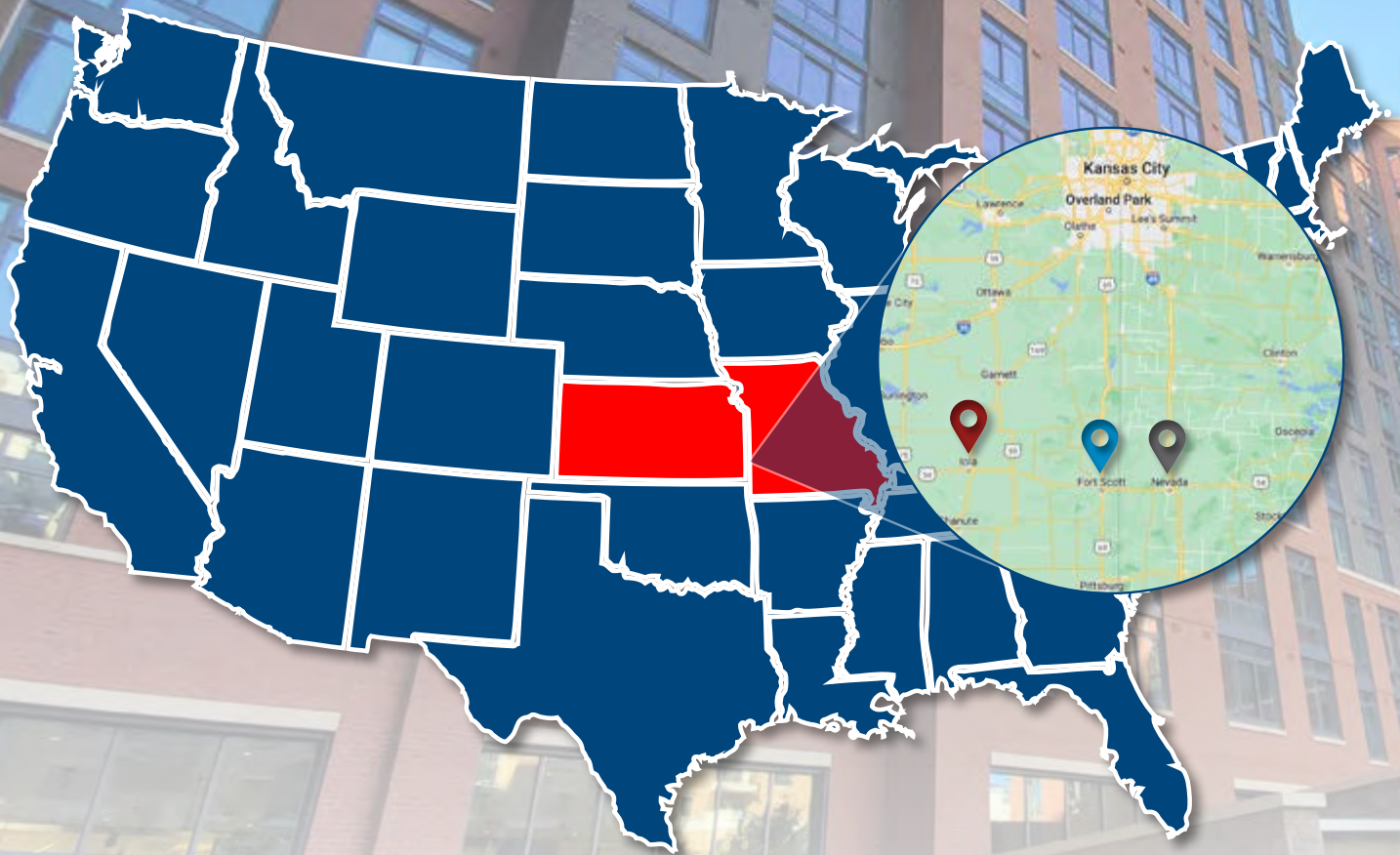


Peerless Design Studio

The Peerless Design Studio is an online tool to help you choose the correct product for your project. Filter by many different categories, including window type, frame depth, OITC range, u-values, building type, etc. Once you have chosen which product you want, you can log in and create a submittal packet with CAD details, specifications, tech sheets, OMC manuals, and Revit BIM models. Visit our Peerless Design Studio at <https://peerlessproducts.concora.com/products>



UNEQUALED UNRIVALED AMERICAN MADE



 2403 S Main St.
Fort Scott, KS 66701

 1800 N. Industrial Highway
Nevada, MO 64772

 2702 N State St.
Iola, KS 66749

 **Peerless**[®]
Products Inc

866.420.400
PeerlessProducts.com

