

Adopting AI in Construction but don't know where to start?

Transform Your Operations and
Peace of Mind with Infill Pro

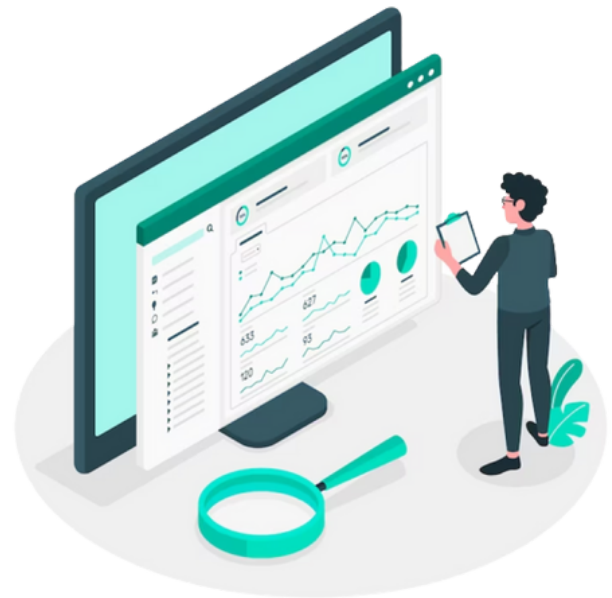
Is Your Business Held Back by Outdated Systems?

Is your business plagued with manual processes because you are conforming your business to outdated systems?

Many businesses in the construction and real estate sectors still rely on outdated systems that demand manual intervention, leading to inefficiencies and errors. These legacy systems, often cobbled together over the years, create significant bottlenecks in workflow, making it difficult for teams to operate smoothly and efficiently. The reliance on manual data entry and processing not only increases the risk of human error but also consumes valuable time that could be better spent on strategic initiatives.

In the fast-paced world of construction and real estate, these inefficiencies can have a domino effect. Delays in processing information can lead to missed deadlines, budget overruns, and ultimately dissatisfied clients. As projects grow in complexity, the limitations of outdated systems become even more apparent, straining resources and highlighting the need for a more integrated and automated approach.

Moreover, the lack of integration between various systems means that data is often siloed, making it challenging to get a comprehensive view of operations. Without a centralized data hub, teams struggle to access the information they need when they need it, leading to delays in decision-making and a reactive rather than proactive management style. This fragmented approach hinders the ability to scale operations effectively and respond agilely to market demands.



Additionally, the competitive edge of businesses relying on outdated systems is significantly diminished. In an industry where technological advancements are rapidly becoming the norm, companies that fail to modernize risk being left behind. Competitors leveraging advanced technologies such as AI and automation are able to optimize their operations, reduce costs, and enhance client satisfaction, setting a higher standard that others must meet to stay relevant.

In light of these challenges, it is clear that modernizing business processes with a solution like Infill Pro is not just beneficial but essential. By centralizing data, automating routine tasks, and providing tailored reporting, Infill Pro helps businesses overcome the limitations of legacy systems. This transformation not only improves efficiency and accuracy but also positions companies to compete more effectively in an increasingly technology-driven market.

Shifting Toward an **AI-Driven Future** in Construction

Transform Your Operations with Infill Pro



CENTRALIZE DATA

Infill Pro centralizes your data into a single platform, eliminating silos and ensuring accurate, real-time information. This enhances visibility and accessibility for informed decision-making.



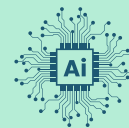
AUTOMATE PROCESSES

Flow Builder automates routine tasks and workflows, reducing manual work and increasing efficiency. Streamline processes, minimize errors, and focus on strategic initiatives.



TAILORED REPORTING

Infill Pro provides tailored reporting and customizable dashboards at all levels. Trend Analysis and analytics deliver relevant insights for tracking project progress, financial performance, and operational metrics.



IMPLEMENT AI

Infill Pro leverages embedded Salesforce Analytics and AI Capabilities to summarize project data and perform custom actions. These AI features provide predictive analytics and actionable insights without additional integrations.

Real-World Impact of Infill Pro

Preparing Your Business for AI Integration:

Infill Pro is not just a tool; it's a transformative platform designed to prepare your business for the future of AI-driven operations. By centralizing your data and automating processes, Infill Pro lays the groundwork for seamless AI integration. This foundational readiness ensures that your business can easily adopt and benefit from advanced AI technologies as they evolve.



Enhanced Efficiency and Accuracy:

With Infill Pro, your operations become more streamlined and efficient. Automation reduces the time spent on manual tasks, minimizing errors and freeing up your team to focus on higher-value activities. This boost in efficiency translates to faster project completions, reduced costs, and improved overall productivity.

Data-Driven Decision Making:

Infill Pro's tailored reporting and AI-powered analytics provide deep insights into your operations. These insights enable precise tracking of project progress, financial performance, and operational metrics, facilitating informed decision-making at all levels of your organization. As AI capabilities expand, the data-driven foundation established by Infill Pro will allow your business to leverage predictive analytics and other advanced AI functionalities with ease.

Future-Proofing Your Business:

By implementing Infill Pro, you are positioning your business to stay ahead of technological advancements. The platform's integration with Analytics and AI capabilities ensures that you are ready to adopt AI solutions as they become available, maintaining your competitive edge in the market. This proactive approach to technology adoption not only improves current operations but also sets the stage for continuous innovation and growth.

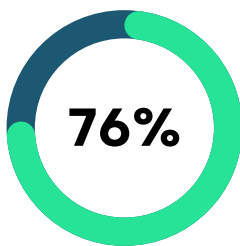
Conclusion:

Embrace the future of construction and real estate with Infill Pro, and prepare your business for the seamless integration of AI technologies. Transform your operations today to stay competitive and thrive in the AI-driven landscape of tomorrow.

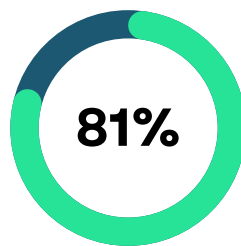
The Shift Toward AI in Construction

Transform Your Operations with Infill Pro

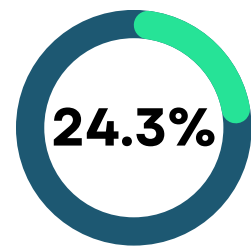
Despite being a massive \$12 trillion industry, the construction sector has been slow to embrace technological advancements. Many construction sites still rely on outdated practices like manual bricklaying and paper blueprints, which significantly hinders productivity and innovation. According to McKinsey, "the typical IT spend for AEC (Architecture, Engineering, and Construction) companies is 1 to 2 percent of the revenue, compared with the 3 to 5 percent average across industries" ([McKinsey & Company](#)).



CONSTRUCTION EXECUTIVES
INTENDED TO INVEST IN
TECHNOLOGY IN 2021



CONSTRUCTION COMPANIES
PLAN TO SPEND MORE ON
TECHNOLOGY



COMPOUNDED ANNUAL
GROWTH RATE OF AI MARKET
IN CONSTRUCTION 2024-2029

Implications of Not Adopting AI:

Businesses that fail to prepare for AI integration risk falling behind their competitors. The benefits of AI include enhanced productivity, improved safety, and better project outcomes, which are critical for maintaining a competitive edge.

- Companies that are not investing in AI and digital technologies are likely to struggle with inefficiencies and higher operational costs.
- The rapid adoption of AI by competitors means that businesses not embracing these technologies may find it increasingly difficult to compete.

Conclusion:

The construction and real estate sectors are at a pivotal point where adopting AI and digital technologies is not just an option but a necessity. By preparing for AI integration with solutions like Infill Pro, businesses can ensure they remain competitive and ready to leverage the transformative power of AI.

Imagine the **Future of Your Business** with Infill Pro

Centralized Data and Seamless Integration

Unified Data Platform: Experience the power of a single, unified data platform that centralizes all your business information, eliminating silos and ensuring real-time accuracy.

Integrated Workflows: Say goodbye to fragmented systems. Infill Pro seamlessly integrates or replaces your existing tools, creating a cohesive and efficient workflow.

Automated Processes and Enhanced Efficiency

Smart Automation: Automate routine tasks and workflows with flow builder, reducing manual workloads and increasing overall efficiency.

Streamlined Operations: Enjoy smoother operations with less human error and faster completion times, allowing your team to focus on strategic initiatives.

Tailored Reporting and Data-Driven Decisions

Custom Dashboards: Access tailored reporting and customizable dashboards that provide deep insights into every aspect of your business.

Informed Decisions: Make data-driven decisions with confidence, leveraging AI-powered analytics to track project progress, financial performance, and operational metrics.

AI-Powered Insights and Predictive Analytics

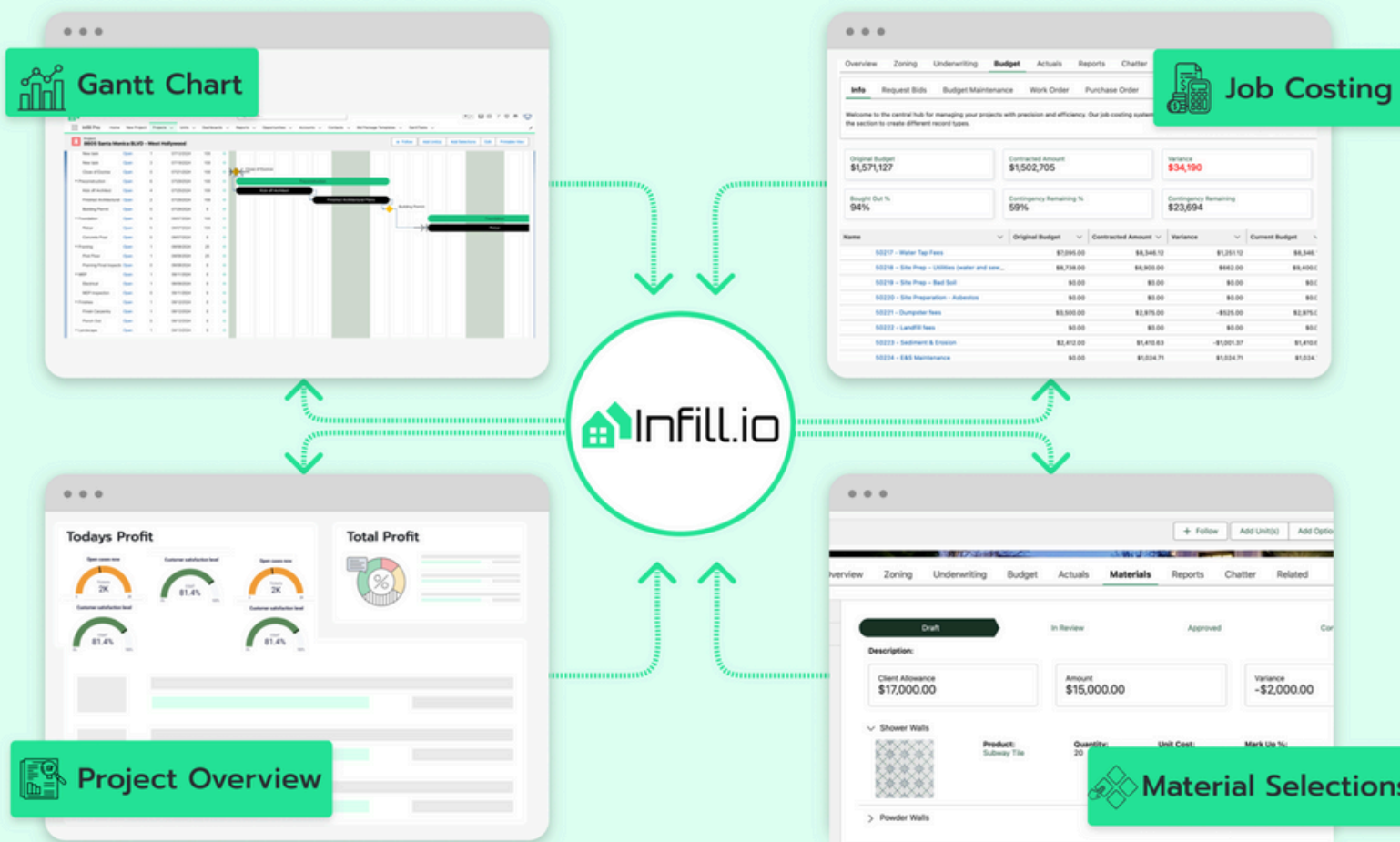
Predictive Capabilities: Harness the power of AI to predict project risks, optimize resource allocation, and enhance overall project management.

Future-Proof Your Business: Stay ahead of the curve with AI-driven insights that prepare your business for future challenges and opportunities.

Infill Pro

Construction Management Software

Infill Pro is your comprehensive solution for managing construction projects from start to finish. Our platform brings together every aspect of the homebuilding lifecycle, ensuring seamless collaboration among all stakeholders, including contractors, architects, engineers, and project managers. With features like project planning, budgeting, document management, resource allocation, and communication tools, you can stay organized and efficient every step of the way. Leveraging Salesforce, the leading cloud-based system, we ensure technological innovation remains at the forefront, empowering clients to transform their construction processes with efficiency and precision.



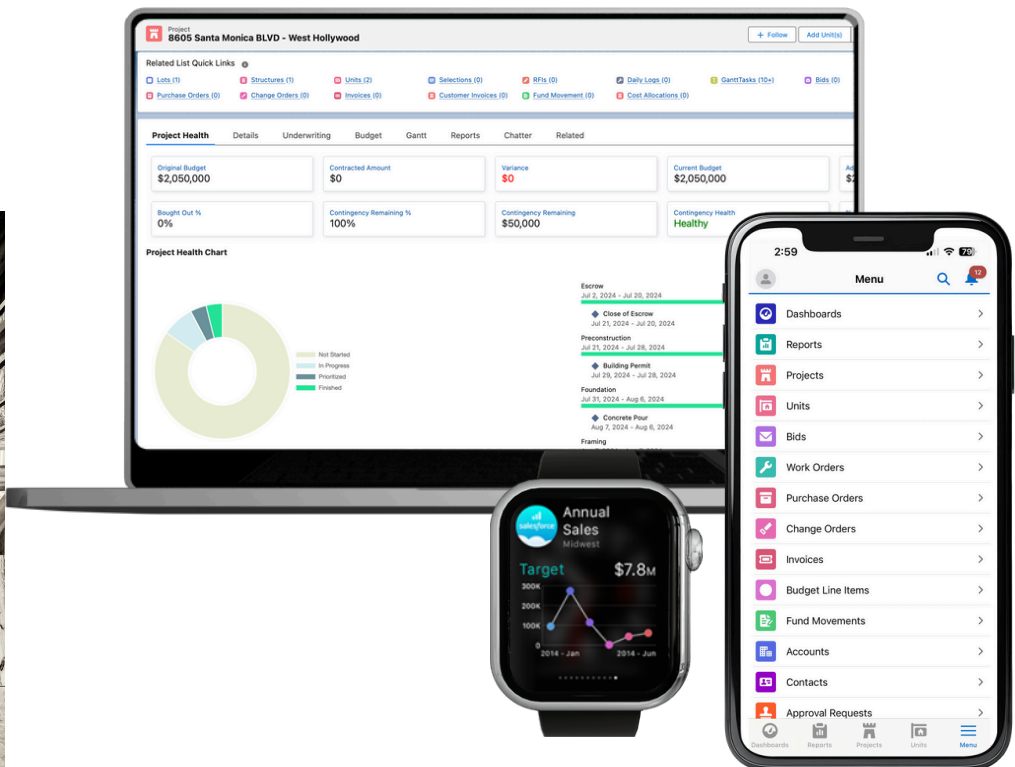
Infill Pro:

Core Functions

Land Acquisition	The Land Acquisition Module allows builders to efficiently track and manage the land acquisition process. Users can underwrite properties, calculate interest costs for loans, and ensure accurate financial planning. This module streamlines the acquisition workflow, providing visibility into each property's status and associated costs.
Scheduling	The Gantt Chart Scheduling System allows construction teams to plan, visualize, and manage project timelines. It provides a graphical representation of tasks, milestones, and dependencies, ensuring all phases stay on track. This system facilitates efficient resource allocation, progress tracking, and deadline management, enhancing overall project coordination and productivity.
Purchasing	The Purchasing Module streamlines procurement by allowing users to manage purchase orders, work orders, change orders, and invoices. It enables comprehensive budget management, including contingency planning and fund movements. This module ensures efficient tracking of expenditures and resources, providing clear financial oversight and enhancing cost control throughout the project lifecycle.
Materials Management	The Material Management Module streamlines material approvals for clients and team members. Clients review and approve selections via the client portal. Create, load, and modify templates for commonly used materials, specifying and tracking costs for each item. This module enhances efficiency and accuracy in material management.
Plan Management	The Plan Management Module enables users to create, modify, and store template plans with detailed specifications and data, ensuring consistency across projects. It enhances efficiency by providing easy access to relevant information, streamlining project planning and maintaining documentation uniformity.
Online Portals	The Online Portals Module provides portals for buyers and subcontractors to interact with project data in Infill Pro. Buyers can review selections, track progress, and communicate with the team. Subcontractors can access plans, submit invoices, and update task statuses. This module enhances collaboration, transparency, and efficiency by providing stakeholders with the information they need.
Sales Management	The Sales Management Module, built on Salesforce, the world's number one CRM, streamlines the sales process. It integrates lead tracking, opportunity management, and sales forecasting. This module enhances sales operations and customer communication, ensuring efficient and effective sales performance.
Business Intelligence	The Business Intelligence Module leverages Salesforce's powerful report and dashboard capabilities. It enables users to create custom reports, visualize data, and gain real-time insights into project performance. This module helps in making informed decisions, tracking key metrics, and identifying trends, enhancing overall business strategy and efficiency.

Want to Learn More?

AI is set to revolutionize the construction industry, driving unprecedented levels of efficiency, accuracy, and innovation. As we look to the future, Infill Pro is committed to integrating cutting-edge AI technologies to ensure our clients stay ahead of the curve.



Book a Demo Today

See how Infill Pro can transform your business, bring you peace of mind and prepare you for the AI Revolution.

[Schedule my Demo](#)





Infill Pro

Customize, Don't Compromise

Reach Us Out

We are ready to grow your business and help you prepare for the future of technology!



info@infill.io



www.infill.io



[\(818\) 317-5826](tel:(818)317-5826)