



Spending Hours Understanding Profitability of your Projects?

Overcome Fragmented Data Across Loan
Information, Schedules, and Budgets with
Infill Pro

The Challenge of Fragmented Systems

Why Traditional Systems Fall Short

Introduction to the Problem

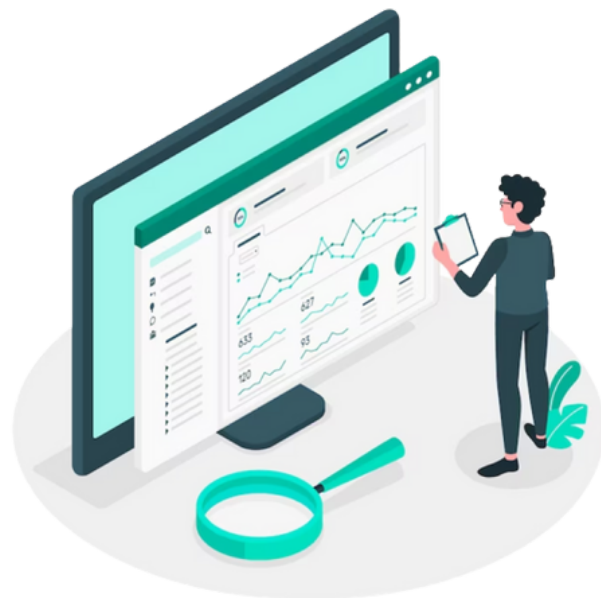
Many organizations struggle with fragmented financial systems where schedules, budgets, and financial data exist in silos. Each department often maintains its own data, leading to discrepancies and inefficiencies. This disjointed approach hampers a holistic view of the company's financial health and project statuses.

Impact on Profitability

Fragmented systems directly affect profitability. Without centralized data, understanding real-time profitability is time-consuming and error-prone. Managers must manually reconcile data from different sources, increasing the risk of errors and delays, which can lead to missed opportunities for cost savings and strategic adjustments.

Current Systems' Limitations

Traditional systems lack the integration needed for real-time updates and comprehensive oversight. Built in isolation, these systems can't communicate effectively, causing significant data update delays and increasing the risk of human error, especially in fast-paced industries where timely, accurate financial data is crucial.



Delays and Errors

The lack of integration causes delays and errors, affecting business operations. Decisions based on outdated information can lead to project delays, budget overruns, and financial mismanagement. These inefficiencies strain resources and undermine stakeholder confidence in financial management.

The Need for Centralization

Centralizing data is crucial. It ensures all departments work with the same information, providing a single source of truth. This integration facilitates real-time updates, enhances data accuracy, and improves efficiency. Infill Pro offers a unified platform that integrates schedules, budgets, and financial data, transforming how companies manage financial health and profitability.

Shifting Toward Automated Profitability Reporting

Transform Your Reporting with Infill Pro



CENTRALIZE DATA

Infill Pro centralizes all your financial data, creating a single source of truth. This eliminates delays and inaccuracies, ensuring real-time updates on profitability and immediate reflection of any changes in budgets or schedules.



AUTOMATE PROCESSES

Flow Builder automates routine tasks and workflows, reducing manual work and increasing efficiency. Streamline processes, minimize errors, and focus on strategic initiatives.



TAILORED REPORTING

Infill Pro provides tailored reporting and customizable dashboards at all levels. Trend Analysis and analytics deliver relevant insights for tracking project progress, financial performance, and operational metrics.



REAL-TIME INSIGHTS

If your schedule or budget changes, there's no need for manual Excel work—the profitability calculation updates in real-time, showing the impact of changes immediately. Manage financial impacts proactively and make informed decisions swiftly.

Real-World Impact of Infill Pro

Preparing Your Business for Automation:

Infill Pro is more than just a tool; it's a transformative platform designed to centralize your financial data and automate processes. By integrating all your financial data into a single platform, Infill Pro ensures real-time updates and accurate profitability calculations. This centralized approach eliminates the need for manual data reconciliation and reduces errors, providing a strong foundation for automated financial management.



Enhanced Efficiency and Real-Time Updates: With Infill Pro, your financial operations become more efficient and streamlined. Automation reduces the time spent on manual tasks, minimizing errors and freeing up your team to focus on strategic initiatives. Real-time updates ensure that any changes in schedules or budgets are immediately reflected in profitability calculations, eliminating the need for manual Excel work and allowing you to see the impact of changes instantly.

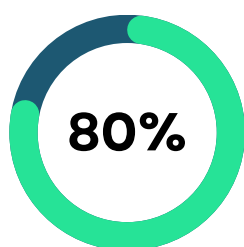
Customized Reporting and Informed Decisions: Infill Pro offers tailored reporting and customizable dashboards, providing deep insights into your financial operations. Track key performance indicators relevant to your business, facilitating precise monitoring of project progress, financial performance, and operational metrics. These insights enable informed decision-making, allowing you to proactively manage financial impacts and stay ahead of potential issues.

Proactive Financial Management: Infill Pro doesn't just help you respond to problems; it helps you prevent them before they happen. Instead of identifying why something went wrong and promising it will never happen again, we provide tools like contingency risk indexes, cost controls and approvals to prevent budget overruns at on your projects. Additionally, we offer risk indexes on schedules to guide you on which projects to prioritize, helping to prevent delays before they occur. This proactive approach ensures that you can manage financial operations more effectively and positions your business to adopt new technologies as they become available.

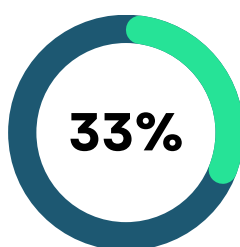
Real-Time Financial Reports with Infill Pro

Reducing Time Spent on Data Management:

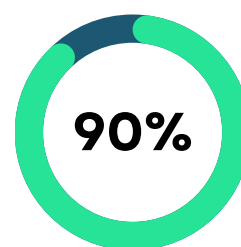
Traditional financial management involves extensive time spent on exporting data, ensuring its accuracy, merging datasets, and creating displays for analysis. This process is not only time-consuming but also prone to errors. Research indicates that finance teams spend up to 80% of their time on manual data aggregation and consolidation tasks, leaving little time for strategic analysis. Infill Pro automates these tasks, providing real-time data updates without manual intervention, thereby reducing the burden on your finance team and freeing them up to focus on more value-added activities.



TIME SPENT ON DATA
AGGREGATION BY FINANCE
TEAMS



TIME SPENT A MONTH PREPARING
FINANCIAL CLOSE



FASTER FINANCIAL REPORTING
WHEN USING INFILL PRO

Alleviating Reporting Anxiety: The pressure to ensure data accuracy and the fear of reporting incorrect information can cause significant anxiety for finance professionals. Manual consolidation processes are fraught with the risk of human error, leading to inaccurate financial statements and compliance issues. Infill Pro alleviates this anxiety by providing real-time, accurate financial data through automated processes. This ensures that all data is up-to-date and reliable, giving you confidence in your financial reports.

Ensuring Data Relevance:

Traditional financial reports can be outdated by the time they're compiled. The financial close process can take up to 10 days, during which the landscape may change. Infill Pro offers real-time updates, ensuring your reports reflect the most current information for timely decision-making.

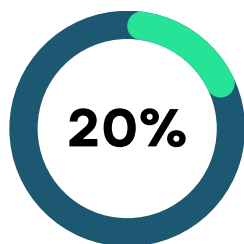
Enhancing Decision-Making with Real-Time Insights:

Access to real-time data empowers your team to make informed decisions. Up-to-date information on budgets, schedules, and profitability helps track key metrics in real time. Infill Pro's customizable dashboards provide the insights needed to drive your business forward confidently.

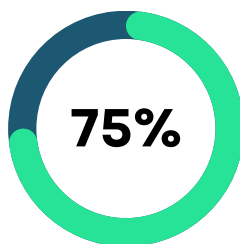
Modernizing Accounts Payable with Infill Pro

The Archaic State of AP in Construction:

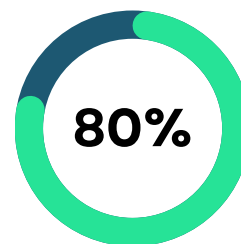
Accounts Payable (AP) processes in construction are often outdated and inefficient. Many companies still rely on email for invoice submission, requiring AP staff to manually verify amounts by looking up contracts in the system. This process is time-consuming and prone to errors. Research indicates that 62% of businesses still process invoices manually, leading to increased labor costs and processing times.



INCREASE IN COST WHEN
DONE INEFFICIENTLY



REDUCED PROCESSING TIME



REDUCING PROCESSING COSTS
WHEN AUTOMATED

Manual Verification Challenges:

Manually verifying invoice amounts against contracts creates significant delays. This involves checking multiple systems and spreadsheets, increasing the risk of human error. Surveys show that manual invoice processing can take up to 20 days to complete, significantly impacting cash flow and project timelines.

Inefficient Approval Processes:

Approval processes in construction AP are often slow and cumbersome. Invoices require multiple levels of approval, with each approver manually reviewing and signing off. This leads to bottlenecks and delayed payments. Studies show that inefficient AP processes can increase the cost of processing an invoice by up to 20%.

The Need for Automation:

Automating AP processes significantly improves efficiency and accuracy. Infill Pro streamlines invoice processing by automating data entry, contract verification, and approval workflows. This reduces manual intervention, minimizes errors, and accelerates processing times. Automated AP systems can cut processing time by 75% and reduce processing costs by 80%, leading to better cash flow management and timely payments.

Conclusion: Modernizing AP processes in construction is essential for improving efficiency and accuracy. Infill Pro provides the tools needed to automate invoice processing, reduce manual intervention, and ensure timely payments. Embrace AP automation with Infill Pro and transform your financial operations today.

Imagine the **Future of Your Business** with Infill Pro

Centralized Data and Seamless Integration

Unified AP and Financial Platform: Experience the power of a single, unified platform that centralizes all your AP and financial data, eliminating silos and ensuring real-time accuracy.

Integrated Workflows: Say goodbye to fragmented systems. Infill Pro seamlessly integrates or replaces your existing tools, creating a cohesive and efficient workflow for AP and financial reporting.

Automated Processes and Enhanced Efficiency

Smart Automation: Automate routine AP tasks and workflows, reducing manual workloads and increasing overall efficiency. Invoices are processed faster with fewer errors.

Streamlined Operations: Enjoy smoother operations with less human error and faster approval times, allowing your team to focus on strategic financial initiatives.

Tailored Reporting and Data-Driven Decisions

Custom Dashboards: Access tailored reporting and customizable dashboards that provide deep insights into every aspect of your AP and financial processes.

Informed Decisions: Make data-driven decisions with confidence, leveraging real-time analytics to track financial performance, cash flow, and operational metrics.

AI-Powered Insights and Predictive Analytics

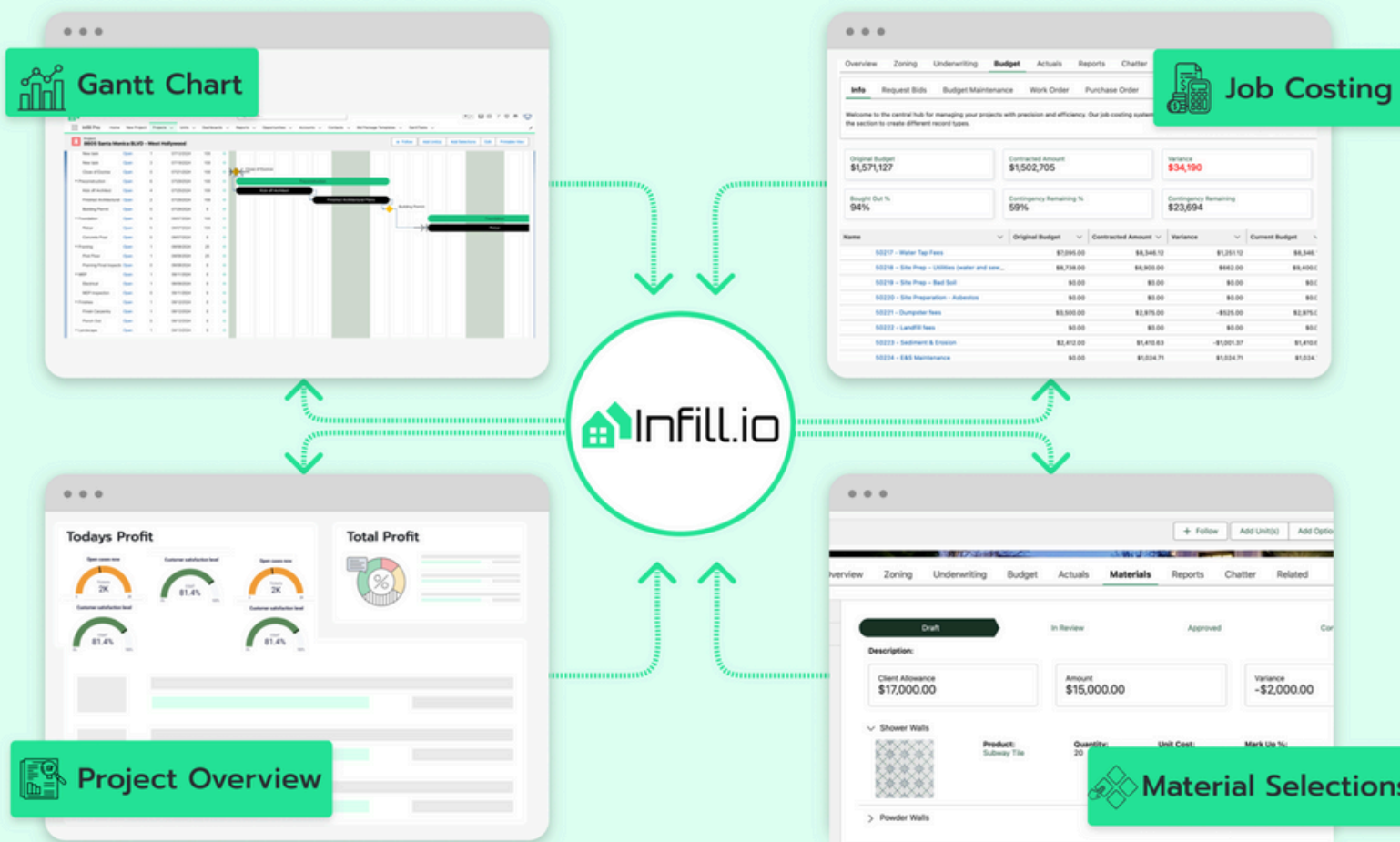
Predictive Capabilities: Harness the power of analytics to predict cash flow needs, optimize resource allocation, and enhance overall financial management.

Future-Proof Your AP Processes: Stay ahead of the curve with predictive insights that prepare your business for future financial challenges and opportunities.

Infill Pro

Construction Management Software

Infill Pro is your comprehensive solution for managing construction projects from start to finish. Our platform brings together every aspect of the homebuilding lifecycle, ensuring seamless collaboration among all stakeholders, including contractors, architects, engineers, and project managers. With features like project planning, budgeting, document management, resource allocation, and communication tools, you can stay organized and efficient every step of the way. Leveraging Salesforce, the leading cloud-based system, we ensure technological innovation remains at the forefront, empowering clients to transform their construction processes with efficiency and precision.



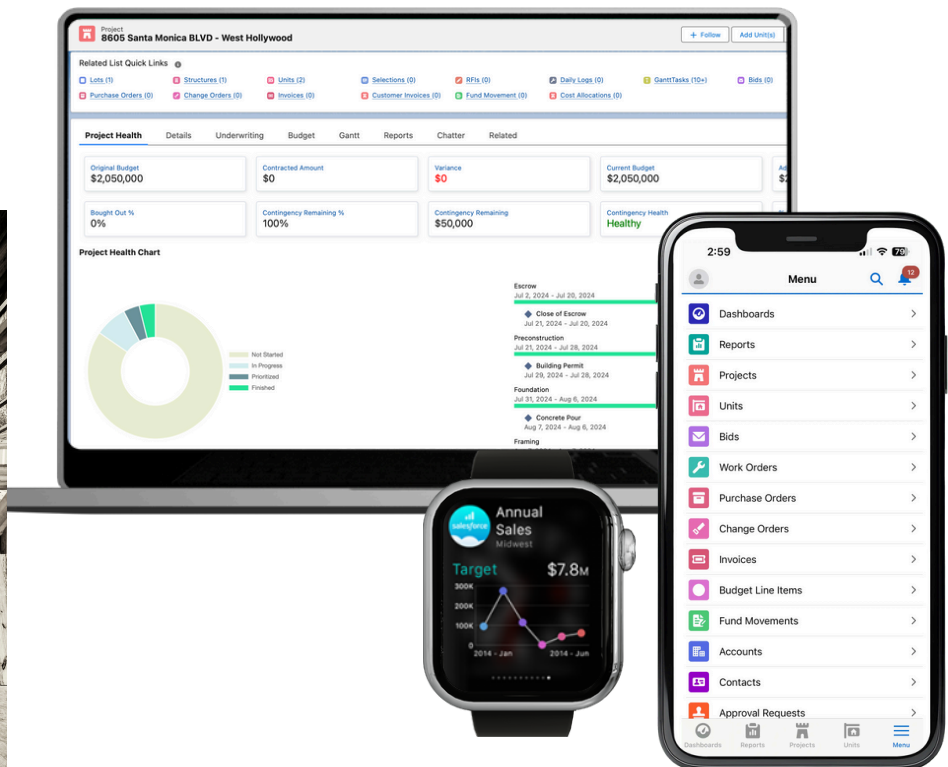
Accounting & Finance:

Core Functions

Land Acquisition	Efficiently track and manage the land acquisition process. Users can underwrite properties, calculate interest costs for loans, and ensure accurate financial planning. Streamline the acquisition workflow, providing visibility into each property's status and costs.
Purchasing	Streamline procurement by managing purchase orders, work orders, change orders, and invoices. Enable comprehensive budget management, including contingency planning and fund movements. Ensure efficient tracking of expenditures and resources, providing clear financial oversight and enhancing cost control.
Accounting Integrations	Connect your financial systems with Infill Pro, ensuring seamless data flow and synchronization. Integrate with any accounting software with an open API, reducing manual data entry, minimizing errors, and ensuring your financial records are always up-to-date.
Contingency Risk Index	Manage and mitigate financial risks associated with construction projects. Provides a comprehensive overview of potential budget overruns. Quickly assess the health of your contingency before approving expenditures. Enable proactive decision-making to ensure projects stay within budget.
Real-Time Profitability	The Real-Time Profitability Module provides instant insights into the financial health of your projects. It tracks expenses, revenues, and profitability in real-time, allowing you to make informed decisions quickly. This module ensures that any changes in project scope, budget, or schedule are immediately reflected in your financial reports, providing an accurate picture of project profitability at all times.
Cost Controls and Approval Processes	Set cost control limits matching your contingency percentage of a budget. Ensure purchasing teams do not exceed a budget line item by a specified percentage. Automatically send approval requests if limits are exceeded. Streamline invoice approvals digitally, ensuring compliance with budget constraints.
Online Portals	Reduce phone calls and emails by providing portals for trades to interact with project data. Trades can view plans, contracts, submit invoices, and see which invoices are approved for payment. They can also check which invoices have been paid, including check numbers, eliminating unnecessary customer service for accounting.
Business Intelligence	Leverage powerful report and dashboard capabilities. Create custom reports, visualize data, and gain real-time insights into project performance. Make informed decisions, track key metrics, and identify trends, enhancing overall business strategy and efficiency.

Want to Learn More?

AI is set to revolutionize the construction industry, driving unprecedented levels of efficiency, accuracy, and innovation. As we look to the future, Infill Pro is committed to integrating cutting-edge AI technologies to ensure our clients stay ahead of the curve.



Book a Demo Today

See how Infill Pro can transform your business, bring you peace of mind and prepare you for the AI Revolution.

[Schedule my Demo](#)





Infill Pro

Customize, Don't Compromise

Reach Us Out

We are ready to grow your business and help you prepare for the future of technology!



info@infill.io



www.infill.io



[\(818\) 317-5826](tel:(818)317-5826)