

WATER VAPOR FIREPLACES

Rad-Flame

Made in California

Experience the unparalleled realism of our premium
water vapor fireplaces, setting new standards in the market!

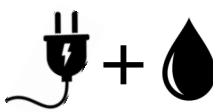
Ultrasonic technology produces a fine mist to create the illusion of flames



KEY FEATURES



Designed and manufactured in California



Operates using regular tap water and a standard 110V outlet



No moisture or condensation



No heat



Autofill and manual filling



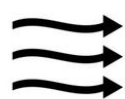
Burner sizes from 32" to 122", with increments of 10"

Fireplace sizes from 40" to 130", with increments of 10"

Each burner/fireplace uses a single burner for any size, unlike other brands that connect multiple 20" burners. This design provides a continuous flame with fewer components that may wear out over time. It greatly simplifies installation and increases reliability



Our flame simulation provides an exceptionally realistic experience, unmatched in the industry. Equipped with industrial-grade LED lights for enhanced durability, choose from over 50 colors, including a natural orange setting that can be dimmed for a cozier ambiance at night



Integrated air intake for straightforward installation and better design integration



The burners/fireplaces include a windshield to enhance the flame's appearance and stability



No light projection on the ceiling when using our fireplaces



Made entirely of 304 stainless steel



The burners/fireplaces feature smart controls, offering options like remote control and home automation integration



The burners/fireplaces are designed for easy and minimal maintenance. Our engineering team has ensured that all components likely to fail or wear overtime can be easily accessed from the top, eliminating the need to remove the entire unit from the wall or enclosure, in contrast to competitors

THE MAGIC OF WATER TRANSFORMING INTO FLAME...

INNOVATION

DESIGN

SAFETY

ECO-FRIENDLY

THE FIRE YOU SEE IS NOT REAL...

The flame you are looking at is not actually real, but it appears so realistic that you might think twice before passing your hand through it. This "flame" is created using cold water vapor illuminated by LEDs.



QUICK & EASY TO INSTALL

Runs on Water
Operates on a standard 110V
No clearance
No chimney/No venting
Autofill or reservoir

ECO FRIENDLY

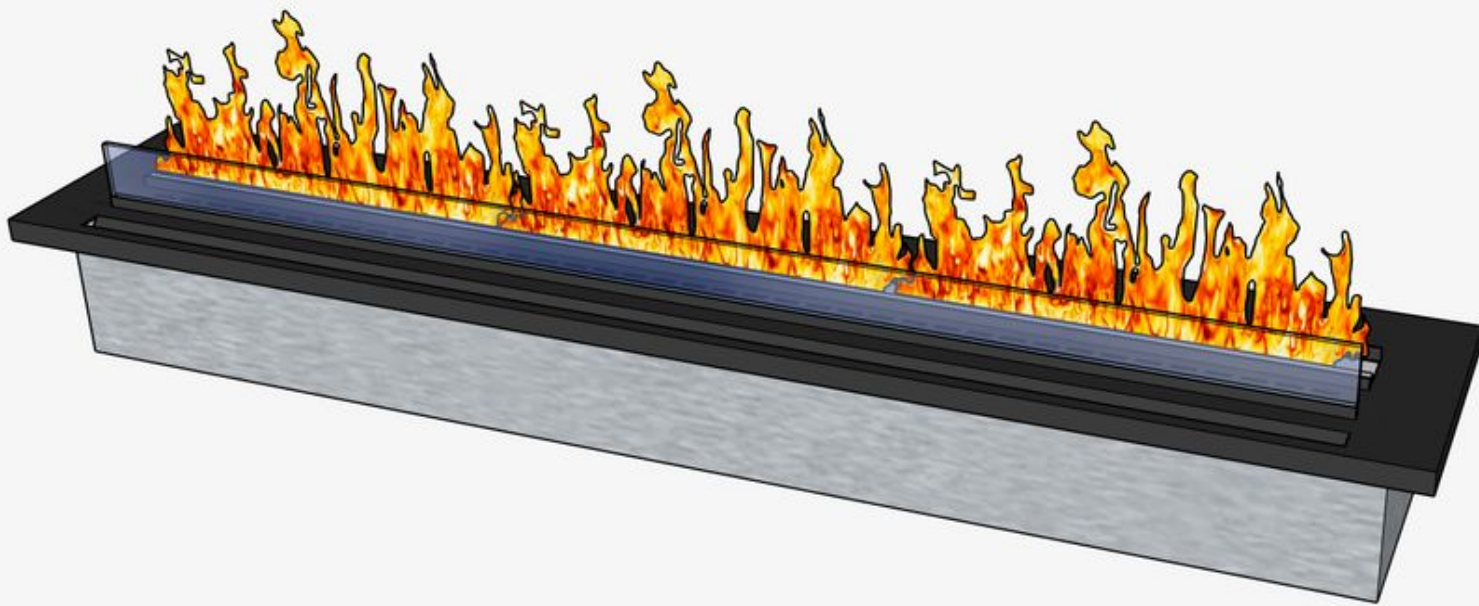
Zero emission
Low cost operation
100% made of stainless steel

DESIGN WITHOUT LIMITS

Adjustable flame
Over 50 options of vibrant colors
Remote control included

BURNER

The technology behind the incredible real fire effect is the burner, which utilizes cold water vapor and LED light. These burners can easily be plugged into a normal 110V outlet, and can be connected to a 1/4" water line for automatic filling.



Alternatively, they can be filled manually with a single button push, which delivers up to 30 hours of use.



BURNER

Suitable projects:

We recommend using the burner individually for a specific and customized project. Following the manual instructions will guide you in planning, designing, and producing your project along with its surrounding finish.



Sizes available

	Length "	Width "	Height"
B32	32	11 1/2	7 7/8
B42	42	11 1/2	7 7/8
B52	52	11 1/2	7 7/8
B62	62	11 1/2	7 7/8
B72	72	11 1/2	7 7/8
B82	82	11 1/2	7 7/8
B92	92	11 1/2	7 7/8
B102	102	11 1/2	7 7/8
B112	112	11 1/2	7 7/8
B122	122	11 1/2	7 7/8



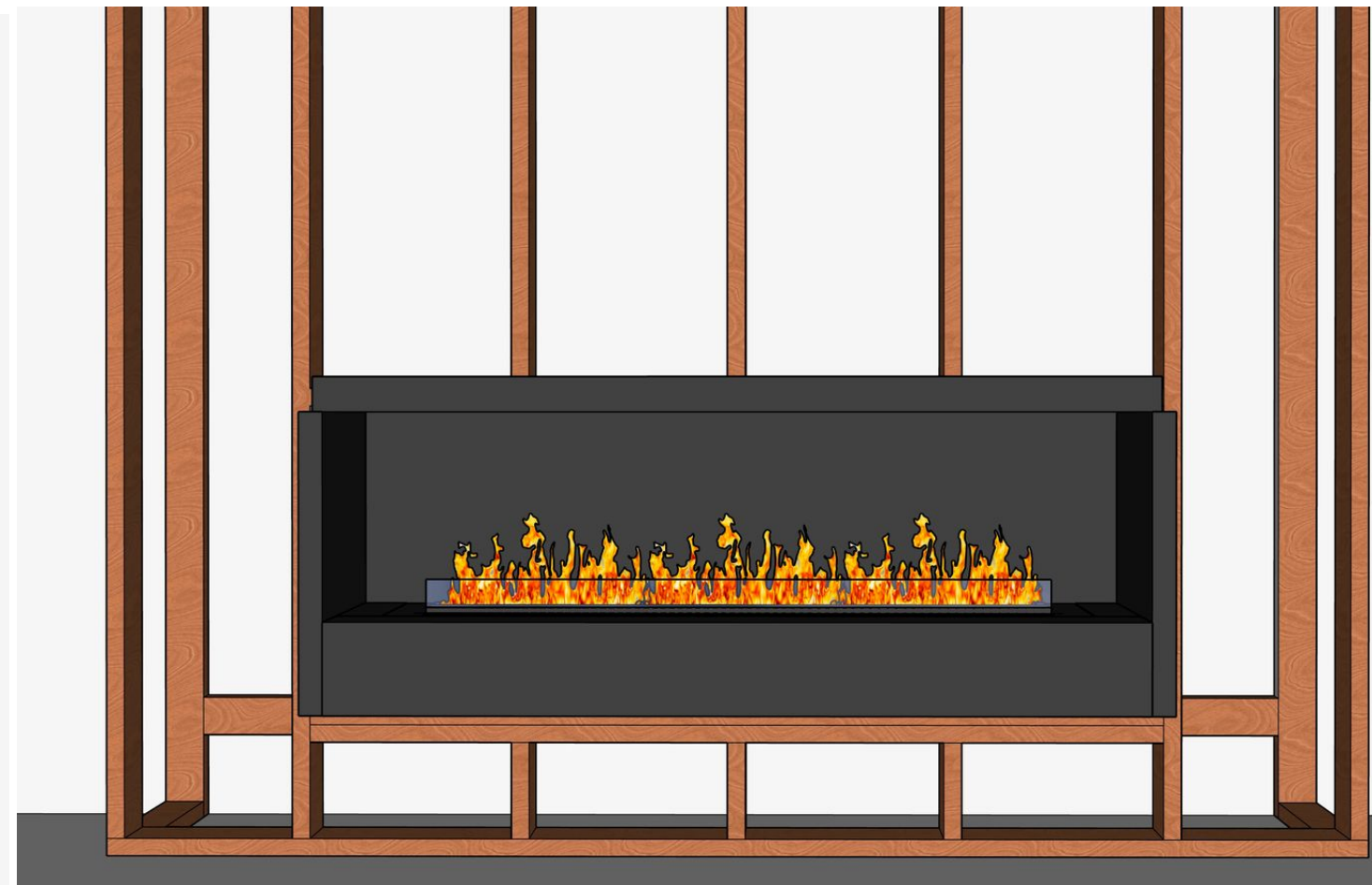
FIREPLACE

The fireplace consists of two main components, namely the burner and the firebox. The firebox is designed to produce optimal flames and create a regulated atmosphere that maximizes the burner's efficiency in various scenarios.



The fireplace is an effortless plug and play solution that can be installed in less than five minutes.

It is equipped with detachable access panels located on each burner sides that allow for easy access to water and electrical connections, ultimately simplifying installation and maintenance.



FIREPLACE

Suitable projects:

We recommend the fireplace for any project that does not require a very specific design or measurement.

It is an excellent solution that guarantees hassle-free installation, requires minimal planning, and has beautiful final designs.



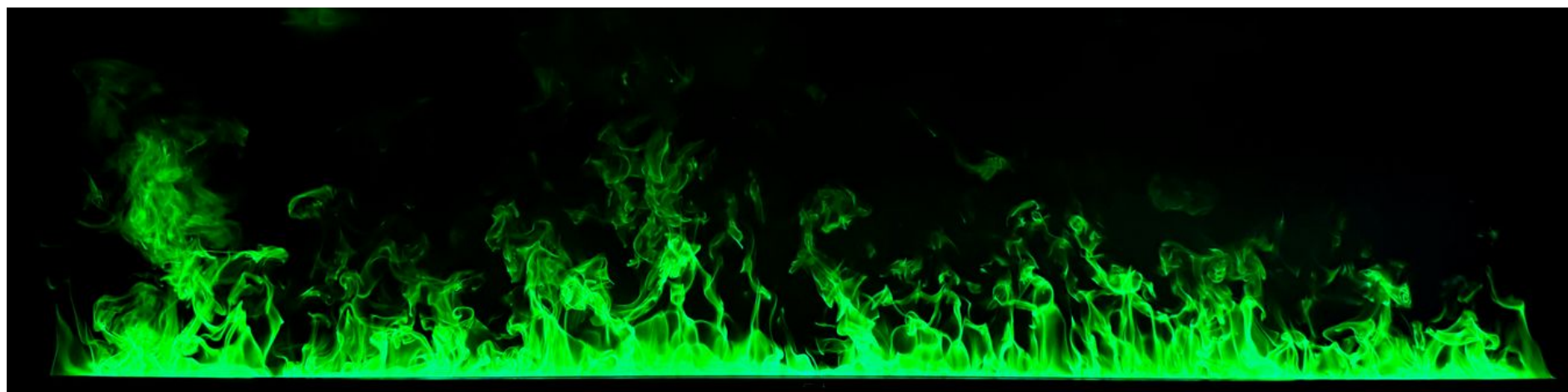
Sizes available

	Length "	Height "	Depth "
	Viewing Area		
FF40	40	18	19 1/4"
FF50	50	18	19 1/4"
FF60	60	18	19 1/4"
FF70	70	18	19 1/4"
FF80	80	18	19 1/4"
FF90	90	18	19 1/4"
FF100	100	18	19 1/4"
FF110	110	18	19 1/4"
FF120	120	18	19 1/4"
FF130	130	18	19 1/4"



FLAME COLORS

Our burners and fireplaces are equipped with 2 rows of industrial-grade LED lights for enhanced durability, increased resistance to damage during transportation, and longer lifespan compared to our competitors. Flame-changing color and intensity, with natural orange mode and a variety of over 50 vibrant shades and combinations.



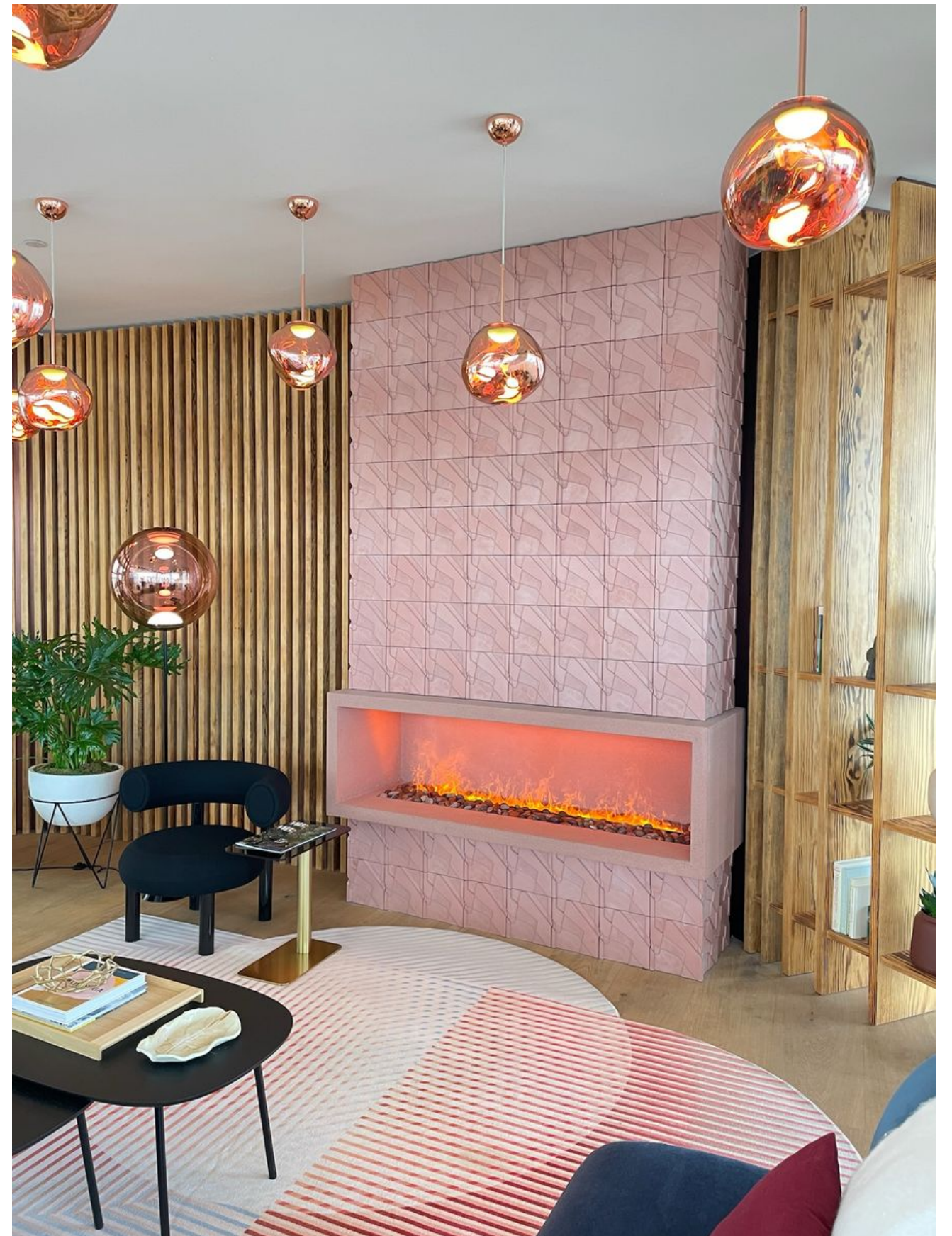
SMART CONTROLS

Easily manage and monitor the fire with the provided remote control or home automation system.

Included:

Remote Control

SHS (Smart Home System)



Rad-Flame

Made in California

WATER VAPOR FIREPLACES

At Rad-Flame, we uphold the highest standards and are committed to complete transparency within our team and with our customers. For this reason, our production process includes numerous rigorous practices and procedures to ensure that the end result is of the highest quality.

With over 20 years of experience in the fireplace industry, we take great pride in our exceptional expertise and professionalism. From the initial concept to the final product, our attention to detail is unmatched.

In a constantly evolving industry,
Rad-Flame has raised the standard for innovation and excellence.
We love our work, and we are confident you will love it too!

info@radflame.com

LOS ANGELES, CA - USA