



EMBERS

PROTECTION SERVICES

Protecting Properties & Communities From Wildfires

- AUTONOMOUS WILDFIRE DEFENSE SYSTEMS
- 24/7 REMOTE MONITORING FROM ANY DEVICE
- EARLY WARNING WILDFIRE DETECTION ALERTS
- EPS WILDFIRE MAPPING SPECIFIC TO PROPERTY
- AUTOMATED WILDFIRE MAP SYSTEM ACTIVATION
- AUTOMATED STRUCTURE & PERIMETER DEFENSE
- CONSTANT WATER PRESSURE SYSTEM
- NO USER INTERFACE REQUIRED



SCAN ME

CA LIC. #1093269 | U.S. PATENT #11247087 | U.L. LISTED



Meet the CEO

Chris McDonald

Chris is the CEO and founder of Embers Protection Services, Inc. He invented and developed the EPS automated exterior fire suppression system with smart technology. Chris holds U.S. Patent #11247087 and has over 20 years of experience in the construction industry. He is an expert in automated hydraulic systems and is dedicated to creating wildfire-prepared homes and businesses.



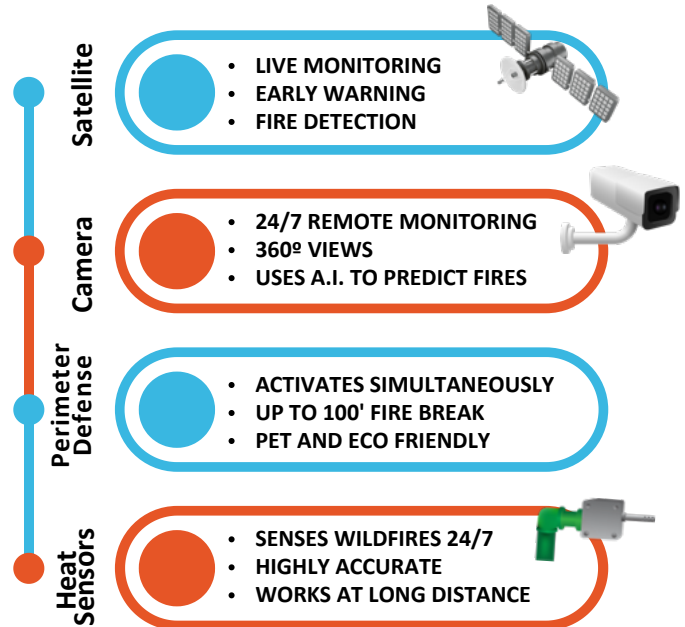
EMBERS
PROTECTION SERVICES
AUTOMATED WILDFIRE DEFENSE SYSTEMS

MISSION

Embers Protection Services, Inc is the industry leader in automated wildfire defense. The EPS system utilizes smart technology and satellite data sources to track wildfires for an individual property 24 hours a day. EPS is 100% autonomous and requires no human action to activate. Automated activation occurs when a fire encroaches within a set distance to the property. The system includes early warning fire detection with alerts sent by text and email. EPS is a dual defense system that first deploys a long term fire retardant to the perimeter vegetation to protect the structure from encroaching fire and radiant heat. Then high pressure water is deployed to the roof and eave of the structure to defend against airborne embers. The EPS constant water pressure system has the ability to maintain constant water pressure even when the demand for water changes. EPS also includes backup power that you will need to protect your home and family during a power outage.



AUTONOMOUS WILDFIRE DEFENSE SYSTEMS



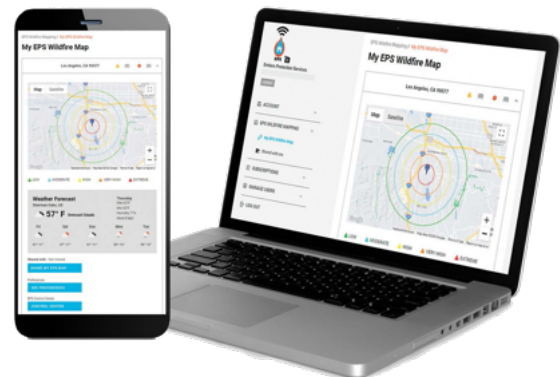
SMART TECHNOLOGY – EPS PORTAL

- Web-based monitoring from any smart device
- Early warning wildfire detection
- AUTO wildfire mapping activation
- AUTO heat sensor activation
- Update alerts sent by email, text, or phone call
- AUTO Structure Defense – deploys water to the roof and eaves to defend against airborne embers
- AUTO Perimeter Defense – deploys long lasting fire retardant to surrounding vegetation
- No user interface or human action required



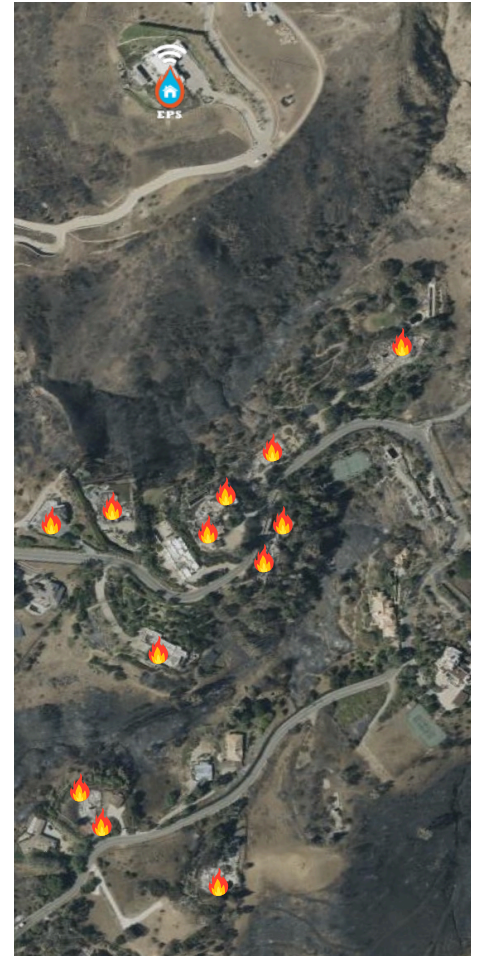
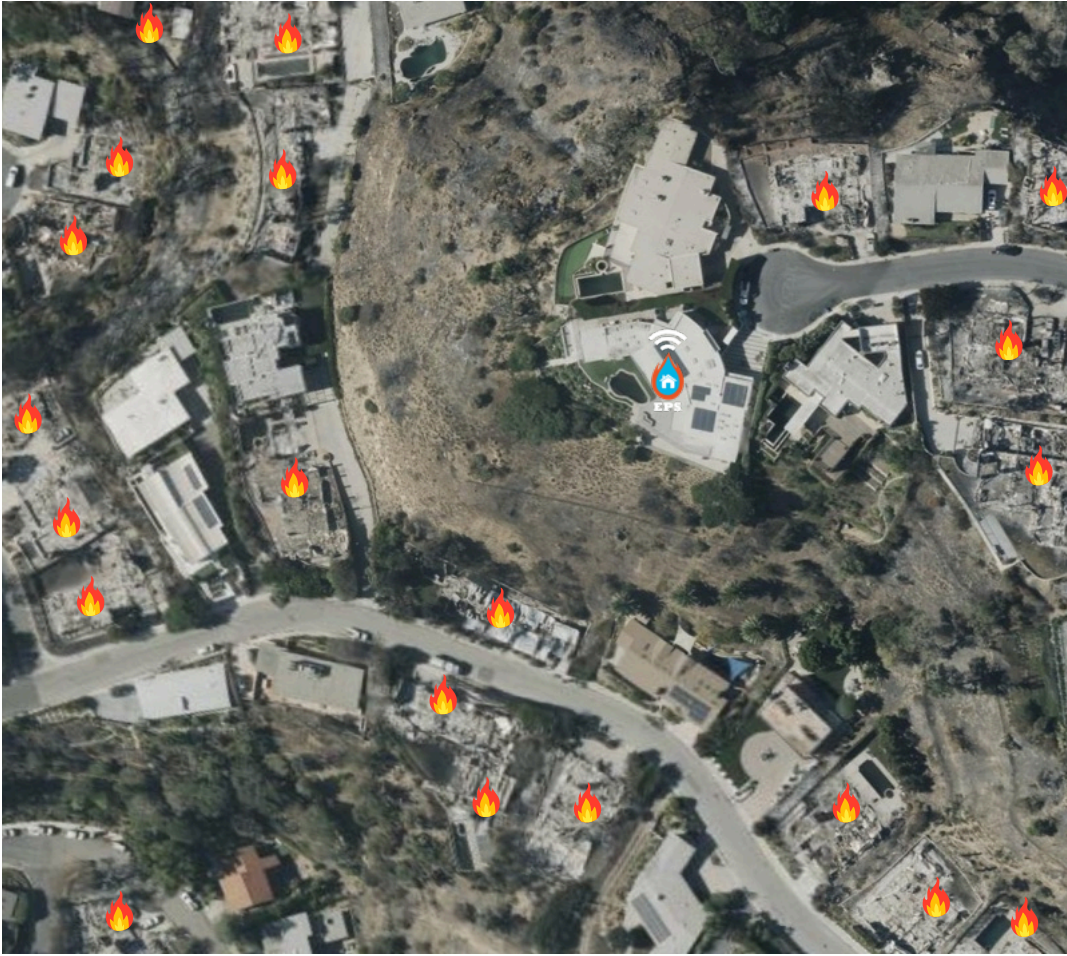
BE PROACTIVE – BE PREPARED – BE IN CONTROL

- Peace of mind when being evacuated
- Defend your property from anywhere in the world
- 24-hour real-time wildfire remote monitoring
- Backup power during grid power shutoffs
- Constant pressure system adjusts to low water psi
- Danger level and wildfire proximity alerts
- System connectivity and status alerts





EPS System Proves Vital During Recent LA Fires



In the face of the devastating Franklin and Palisades fires that recently threatened the Malibu and Pacific Palisades areas, homes equipped with the Embers Protection Autonomous Wildfire Defense System, stood resilient. Most notably, a property in Malibu survived both fires, while neighboring properties without protection faced significant and unfortunate damages.

The autonomous EPS system activated precisely as designed, deploying its dual-defense strategy:

First, deploying fire retardant on the vegetation to create a crucial firebreak around the property perimeter. Then, activating high-pressure water systems to protect the structure from airborne embers.

This real-world test demonstrated the effectiveness of our EPS technology, which requires no human intervention to activate. The system's 24/7 monitoring and automated response proved invaluable during evacuation conditions when homeowners couldn't be present to defend their properties.

To the right is an email from the property owner.

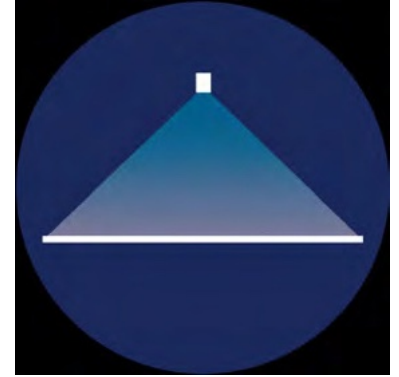


Testimonial

Chris, thank you for being there to ensure that the system was functioning properly during the fires. It gave me great peace of mind knowing that you are there to make sure our home is protected.



EPS STRUCTURE DEFENSE



ROOF FIRE SUPPRESSION
HOUSING WITH FLASHING AND
DUAL OPPOSING NOZZLE HEAD

EAVE AND WINDOW PROTECTION
WITH EXTRA WIDE FLAT FAN SPRAY
NOZZLE DEFLECTED 75 DEGREES



ROOF HOUSING

- 304 Stainless Steel
- Powder Coated
- Dual Nozzle STS Head
- 50' Radius Heavy Stream





EPS PERIMETER DEFENSE



LONG-TERM FIRE RETARDANT

- Colorless long lasting fire retardant
- Creates up to 100' wide firebreak
- Defends structure from encroaching fire
- Protects structure from radiant heat
- Approved by the USDA Forest Service
- Pet and environment friendly
- Auto deployment in Defensible Space Zone 2





WILDFIRE DEFENSE FOR

- HOAs
- VINEYARDS & FARMS
- SOLAR FARMS
- ELECTRIC/CELLULAR TOWERS

HOAs

EPS provides wildfire defense for HOAs by creating a firebreak with eco-friendly suppressant and protecting homes with high-pressure water. Smart technology and satellite monitoring ensure 24/7 automated protection, giving communities peace of mind against wildfires.

SOLAR FARMS

EPS protects solar farms with an automated wildfire defense system, deploying a fire suppressant barrier and high-pressure water to prevent damage. Using smart technology and satellite data, EPS autonomously detects and mitigates fire threats, ensuring continuous operation and asset protection.

VINEYARDS & FARMS

Embers Protection Services (EPS) safeguards vineyards and farms with an automated dual defense system. A fire suppressant forms a protective barrier, while high-pressure water shields crops and structures from airborne embers. Smart technology and satellite monitoring ensure 24/7 autonomous wildfire protection, securing your investment.

ELECTRIC/CELLULAR TOWERS

EPS shields electric and cellular towers from wildfires with an automated system that deploys a fire suppressant barrier and high-pressure water. Smart technology and satellite monitoring enable continuous, autonomous protection, ensuring reliable service even in fire-prone areas.





EPS CONTROL CENTER



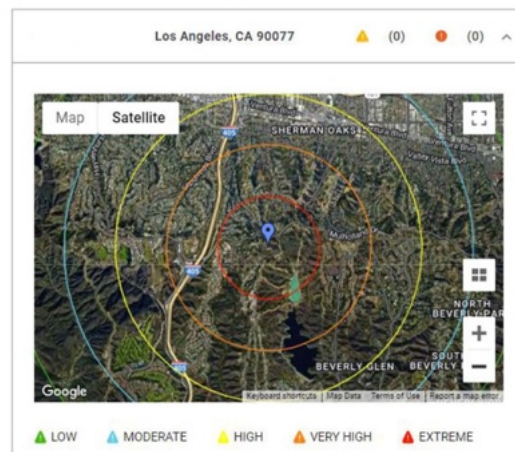
EPS CONTROL PANEL

EPS is programmed to activate automatically when a wildfire encroaches into a set radius around an EPS defended property. Long lasting fire retardant is deployed to the perimeter vegetation creating 100' wide firebreak. As the fire encroaches closer, the EPS system will progress through 5 different danger levels deploying high pressure water to the roof and under eave with more frequency as the danger level increases. Automated alerts are sent to update the property owner in real-time about the status of the system or when a new danger level is reached.

- NEMA 3R STEEL ENCLOSURE WITH FAN
- ALLEN-BRADLEY 7" HMI / PLC TOUCHSCREEN
- SATELLITE COMMUNICATION
- VARIABLE SPEED DRIVE(S)
- CONSTANT WATER PRESSURE SYSTEM
- PRESSURE TRANSMITTER SENSOR
- HEAT SENSOR EMERGENCY ACTIVATION
- U.S. PATENT #11247087
- 508a U.L. LISTED

EPS Wildfire Mapping / My EPS Wildfire Map

My EPS Wildfire Map



EPS PORTAL

The EPS Portal offers 24/7 real-time wildfire remote monitoring and automated activation of your EPS wildfire defense system. No user interface or human action required for the system to activate and defend your property. EPS web interface allows property owners to monitor fire danger near their home or business from any smart device. Early warning fire detection alerts are automatically sent out by email or text to the property owner to inform them about fire proximity and assist with quicker evacuations. The EPS Portal displays wildfire mapping specific to the property with danger level zones low to extreme.

- 24/7 REAL-TIME WILDFIRE MONITORING
- EARLY WARNING WILDFIRE DETECTION
- PROPERTY SPECIFIC WILDFIRE MAPPING
- PROGRAMMABLE DANGER LEVELS
- AUTOMATED PERIMETER DEFENSE
- AUTOMATED STRUCTURE DEFENSE
- AUTOMATED ALERTS SENT BY TEXT OR EMAIL
- INVITE FAMILY & FRIENDS TO RECEIVE ALERTS
- USER INTERFACE NOT REQUIRED

BE PROACTIVE – BE PREPARED – BE IN CONTROL

888.927.0901 | WWW.EMBERSPROTECTION.COM | INFO@EMBERSPROTECTION.COM

CA LIC. #1093269 | U.S. PATENT #11247087 | U.L. LISTED