

Arkitech Framer

## AF1200P Technology Package

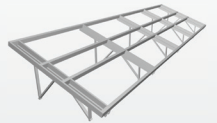
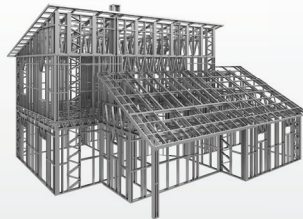


## Applications

Residential Buildings, Prefabricated Offices, Bathroom Pods,  
Medium Roof/Truss Span Storage Units, Site Units



De-coiler DC2500



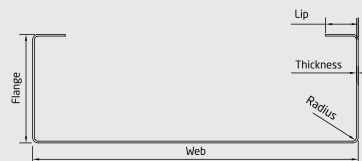
## Technology Package

- Arkitech Design and Detailing Software
- Arkitech Framer Software
- Arkitech Framer AF1200P
- De-coiler DC2500
- 1 Spare Part Kit, 1 Pack of Consumable Parts, 1 Pack of Adjustment Tools
- Commissioning and Training for the AF1200P Framer
- Training for Arkitech Design and Detailing Software
- Software and Framer Technical Support

### PROFILE SPECIFICATIONS

- Number of Web Sizes
- Profile sections
- Web Size Range
- Standard Web Sizes
- Profile Thickness Range
- Flange Heights
- Profile Lip
- Steel Grade
- Galvanization
- Profile Operations

Single Size  
U, C  
63mm - 150mm (2½" - 6.0")  
63mm | 75mm | 90mm | 100mm | 140mm | 150mm  
2½" | 3.0" | 3½" | 4.0" | 5½" | 6.0"  
0.55mm - 1.2mm (25ga - 18ga)  
41mm - 51mm (1½" - 2.0")  
Up to - 16mm (Up to - 5/8")  
S220 - S550  
Z180 - Z450  
8 (2 free bays for additional stations)



### FRAMER SPECIFICATIONS

- Line Speed
- Printer
- Servo Drive Power
- Hydraulic Power
- Hydraulic Tank
- Ambient Temperature
- Control Monitor
- Length
- Width
- Height
- Appr. Weight
- Power
- Connectivity

200m/h (11 ft/min) - 700m/h (38 ft/min),  
maximum 3000 m/h (164 ft/min)  
Double Head Printer  
8.8kW  
7.5kW  
80L (21.2 gal)  
5°C - 35°C (41°F - 95°F)  
19"  
4,816mm (15' 10")  
1,100mm (3' 8")  
1,667mm (5' 6")  
3,500kg (7,700lb)  
3 x 400V - 50 Hz. Maximum 25 kW  
WiFi, W-Lan

### DECOILER SPECIFICATIONS

- Decoiler Capacity
- Length
- Width
- Height
- Maximum Coil Width
- Maximum Coil Diameter
- Appr. Weight

2.5 ton (5,500lb)  
1,260mm (4' 2")  
1,465mm (5' 3")  
1,180mm (8' 1")  
400mm (1' 4")  
1,800mm (5' 11")  
570kg (1,260lb)

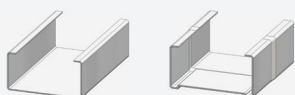
### FRAMER COMMISSIONING, TRAINING, SUPPORT

- Framer Technical Support

24 months after commissioning

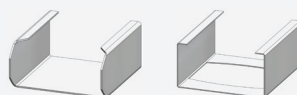
- Manufacturing speed is subjected to change due to the count of operations on the frame.  
- Framer dimensions are subjected to change due to design configuration.

#### Post Punch Operations



Cut

Swage



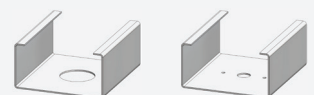
Chamfer

Notch



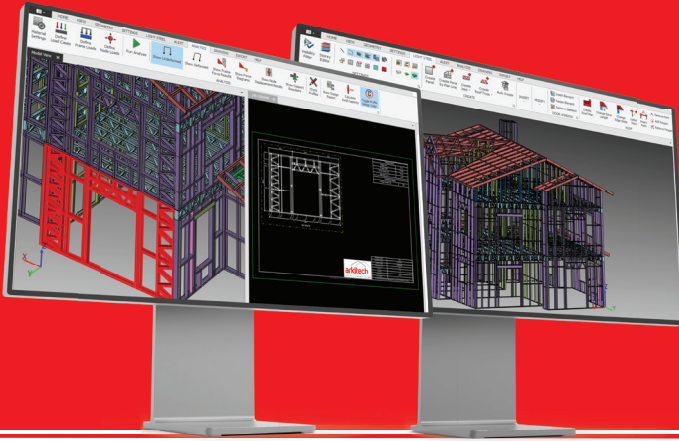
Dimpled Screw/Rivet

Lip Cut



Service Hole

Web + Index Hole (2)



## Best user-friendly Design Software for Light Gauge Steel / Cold Formed Steel Structures

### Software Solutions

#### Design Software

Arkitech Design Software



- LGS building design and detailing
- Import of DXF files
- Integration of Hot Steel and concrete elements
- Individual settings as default
- 2D and 3D assisting tools
- Libraries for profiles, frames and steel materials
- Feasibility check function
- Drafting of labelled assembly drawings
- Analysis tool for Eurocode 3 and AISI
- Export of S2K files for comprehensive static analysis
- Export of Bill of Material of XLS or PDF files
- Export of IFC files for BIM software
- Export of ARK files for production with Arkitech Frammer

• Software Support

12 months after software training



#### Manufacturing Software

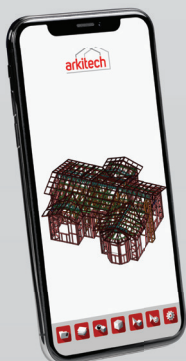
Arkitech Frammer Software



- Frammer Software: Arkitech Frammer Software
- Compatibility with Arkitech ARK and CSV Files
- Operation of Arkitech LGS Manufacturing System
- Various possibilities for production of profiles
- Automatic creation of manufacturing files
- Activation of complete manufacturing processes
- Option for manufacturing of individual profiles
- Remote Failure Analysis
- Real Time Production Report
- Report production output in real time
- All production figures for production planning
- Option for online remote access
- Option for online failure analysis

• Software Support

12 months after software training



### Arkitech Mobile Viewer App

