



Innovative Automated Manufacturing Solution for Light Gauge Steel / Cold Formed Steel Construction

Arkitech Framers

AF1600P Technology Package

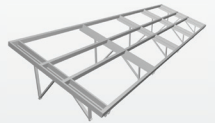
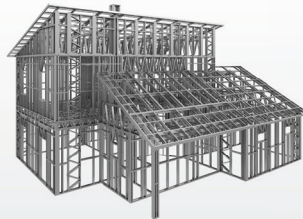
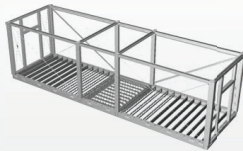


Applications

Residential Buildings, Prefabricated Offices, Bathroom Pods,
Multi-Storey Buildings, Commercial Buildings, Industrial Buildings



De-coiler DC2500



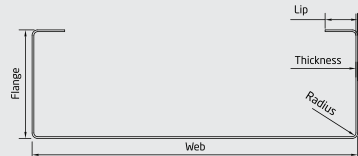
Technology Package

- Arkitech Design and Detailing Software
- Arkitech Framers Software
- Arkitech Framers AF1600P
- De-coiler DC2500
- 1 Spare Part Kit, 1 Pack of Consumable Parts, 1 Pack of Adjustment Tools
- Commissioning and Training for the AF1600P Framers
- Training for Arkitech Design and Detailing Software
- Software and Framers Technical Support

PROFILE SPECIFICATIONS

- Number of Web Sizes
- Profile sections
- Web Size Range
- Standard Web Sizes
- Profile Thickness Range
- Flange Heights
- Profile Lip
- Steel Grade
- Galvanization
- Profile Operations

Single Size
U, C
63mm - 150mm (2½" - 6.0")
63mm | 75mm | 90mm | 100mm | 140mm | 150mm
2½" | 3.0" | 3½" | 4.0" | 5½" | 6.0"
0.75mm - 1.6mm (22ga - 16ga)
41mm - 51mm (1½" - 2.0")
Up to - 16mm (Up to - 5/8")
S220 - S550
Z180 - Z450
8 (2 free bays for additional stations)



FRAMER SPECIFICATIONS

- Line Speed
- Printer
- Servo Drive Power
- Hydraulic Power
- Hydraulic Tank
- Ambient Temperature
- Control Monitor
- Length
- Width
- Height
- Appr. Weight
- Power
- Connectivity

200m/h (11 ft/min) - 700m/h (38 ft/min),
maximum 3000 m/h (164 ft/min)
Double Head Printer
15kW
11kW
80L (21.2 gal)
5°C - 35°C (41°F - 95°F)
19"
4,816mm (15' 10")
1,100mm (3' 8")
1,667mm (5' 6")
3,500kg (7,700lb)
3 x 400V - 50 Hz. Maximum 30 kW
WiFi, W-Lan

DECOILER SPECIFICATIONS

- Decoiler Capacity
- Length
- Width
- Height
- Maximum Coil Width
- Maximum Coil Diameter
- Appr. Weight

2.5 ton (5,500lb)
1,260mm (4' 2")
1,465mm (5' 3")
1,180mm (8' 1")
400mm (1' 4")
1,800mm (5' 11")
570kg (1,260lb)

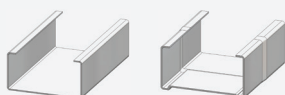
FRAMER COMMISSIONING, TRAINING, SUPPORT

- Framers Technical Support

24 months after commissioning

- Manufacturing speed is subjected to change due to the count of operations on the frame.
- Framers dimensions are subjected to change due to design configuration.

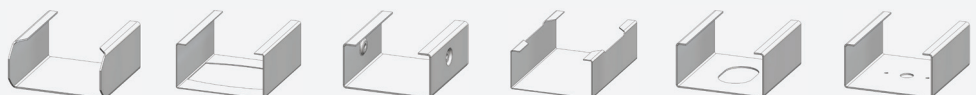
Post Punch Operations



Cut

Swage

Pre Punch Operations



Chamfer

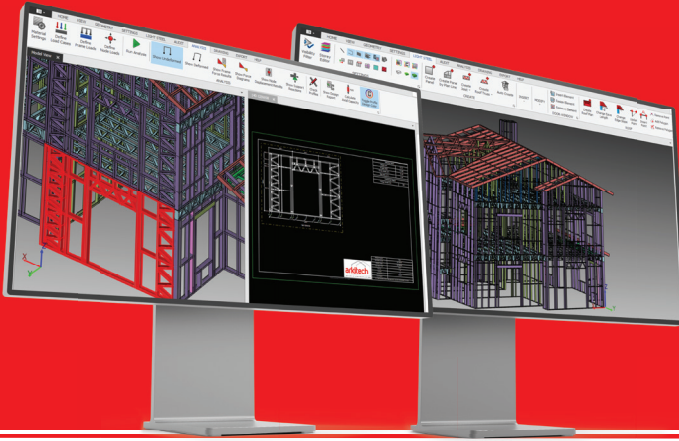
Notch

Dimpled Screw/Rivet

Lip Cut

Elliptical Service Hole

Web + Index Hole (2)



**Best user-friendly Design
Software for Light Gauge Steel /
Cold Formed Steel Structures**

Software Solutions

Design Software

Arkitech Design Software



- LGS building design and detailing
- Import of DXF files
- Integration of Hot Steel and concrete elements
- Individual settings as default
- 2D and 3D assisting tools
- Libraries for profiles, frames and steel materials
- Feasibility check function
- Drafting of labelled assembly drawings
- Analysis tool for Eurocode 3 and AISI
- Export of S2K files for comprehensive static analysis
- Export of Bill of Material of XLS or PDF files
- Export of IFC files for BIM software
- Export of ARK files for production with Arkitech Frammer

• Software Support

12 months after software training



Manufacturing Software

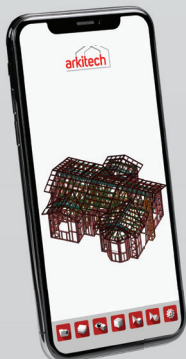
Arkitech Frammer Software



- Frammer Software: Arkitech Frammer Software
- Compatibility with Arkitech ARK and CSV Files
- Operation of Arkitech LGS Manufacturing System
- Various possibilities for production of profiles
- Automatic creation of manufacturing files
- Activation of complete manufacturing processes
- Option for manufacturing of individual profiles
- Remote Failure Analysis
- Real Time Production Report
- Report production output in real time
- All production figures for production planning
- Option for online remote access
- Option for online failure analysis

• Software Support

12 months after software training



**Arkitech
Mobile Viewer App**

