

Arkitech Framer

MF1600P Technology Package

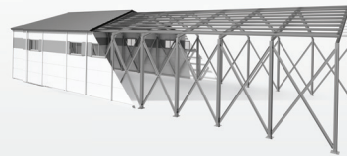
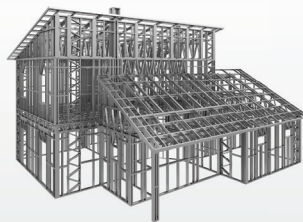
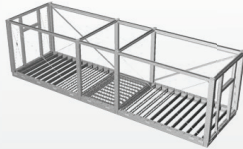


Applications

Residential Buildings, Prefabricated Offices, Bathroom Pods,
Multi-Storey Buildings, Commercial Buildings, Industrial Buildings



De-coiler DC2500



Technology Package

- Arkitech Design and Detailing Software
- Arkitech Framer Software
- Arkitech Framer MF1600P
- De-coiler DC2500
- 1 Spare Part Kit, 1 Pack of Consumable Parts, 1 Pack of Adjustment Tools
- Commissioning and Training for the MF1600P Framer
- Training for Arkitech Design and Detailing Software
- Software and Framer Technical Support

PROFILE SPECIFICATIONS

- Number of Web Sizes: 5 (expandable on request)
- Profile sections: U, C
- Web Size Range: 63mm - 200mm (2½" - 8.0")
- Standard Web Sizes: 63mm | 75mm | 90mm | 100mm | 150mm | 200mm
- Profile Thickness Range: 2½" | 3.0" | 3½" | 4.0" | 6.0" | 8.0"
- Flange Heights: 0.75mm - 1.6mm (22ga - 16ga)
- Profile Lip: 41mm - 55mm (1½" - 2½")
- Steel Grade: Up to - 16mm (Up to - 5/8")
- Galvanization: S220 - S550
- Profile Operations: Z180 - Z450
- 12 (2 free bays for additional auto-adjustable stations)



FRAMER SPECIFICATIONS

- Line Speed: 200m/h (11 ft/min) - 700m/h (38 ft/min), maximum 3000 m/h (164 ft/min)
- Printer: Double Head Printer
- Servo Drive Power: 15kW
- Hydraulic Power: 11kW
- Hydraulic Tank: 200 L (52.8 gal)
- Ambient Temperature: 5°C - 35°C (41°F - 95°F)
- Control Monitor: 19"
- Length: 8,089mm (26' 7")
- Width: 1,765mm (5' 10")
- Height: 2,190mm (7' 3")
- Appr. Weight: 18,000 kg (39,700lb)
- Power: 3 x 400V - 50 Hz. Maximum 52 kW
- Connectivity: WiFi, W-Lan

DECOILER SPECIFICATIONS

- Decoiler Capacity: 2.5 ton (5,500lb)
- Length: 1,260mm (4' 2")
- Width: 1,465mm (5' 3")
- Height: 1,180mm (8' 1")
- Maximum Coil Width: 400mm (1' 4")
- Maximum Coil Diameter: 1,800mm (5' 11")
- Appr. Weight: 570kg (1,260lb)

FRAMER COMMISSIONING, TRAINING, SUPPORT

- Framer Technical Support: 24 months after commissioning

- Manufacturing speed is subjected to change due to the count of operations on the frame.
- Framer dimensions are subjected to change due to design configuration.

Standalone Operations



Cut



Swage

Cassette Systems Operations



Notch



Chamfer

Software Controlled - Auto Adjustable Operations



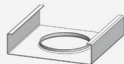
Lip Cut



Dimpled Screw/Rivet



Pre-Cut



Swaged Service Hole



Elliptical Service Hole



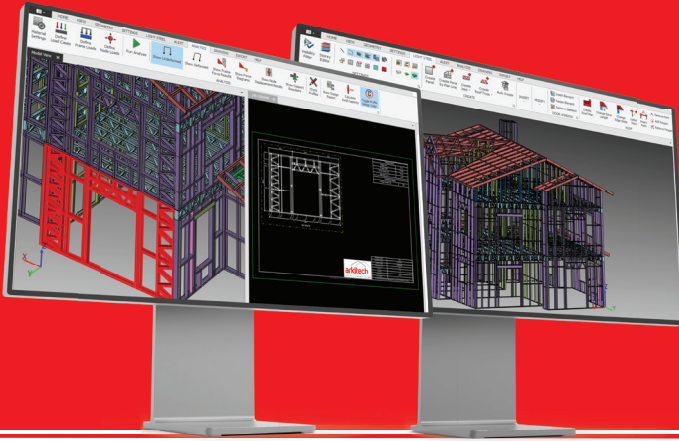
Web Hole + Index (2)



Big Dimpled Screw



Flange Multi Connection



Best user-friendly Design Software for Light Gauge Steel / Cold Formed Steel Structures

Software Solutions

Design Software

Arkitech Design Software



- LGS building design and detailing
- Import of DXF files
- Integration of Hot Steel and concrete elements
- Individual settings as default
- 2D and 3D assisting tools
- Libraries for profiles, frames and steel materials
- Feasibility check function
- Drafting of labelled assembly drawings
- Analysis tool for Eurocode 3 and AISI
- Export of S2K files for comprehensive static analysis
- Export of Bill of Material of XLS or PDF files
- Export of IFC files for BIM software
- Export of ARK files for production with Arkitech Frammer

• Software Support

12 months after software training



Manufacturing Software

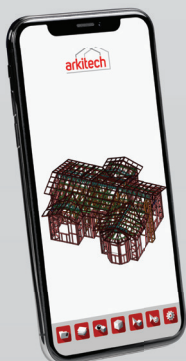
Arkitech Frammer Software



- Frammer Software: Arkitech Frammer Software
- Compatibility with Arkitech ARK and CSV Files
- Operation of Arkitech LGS Manufacturing System
- Various possibilities for production of profiles
- Automatic creation of manufacturing files
- Activation of complete manufacturing processes
- Option for manufacturing of individual profiles
- Remote Failure Analysis
- Real Time Production Report
- Report production output in real time
- All production figures for production planning
- Option for online remote access
- Option for online failure analysis

• Software Support

12 months after software training



Arkitech Mobile Viewer App

