

The background is a solid teal color. It features several large, white, abstract shapes that resemble stylized letters or organic forms. One large shape on the left side has a horizontal bar extending to the right, and another shape below it has a similar bar. These shapes create a sense of depth and movement.

Rub-e-Wall[®]

Product Line

Proudly made in the USA

Rub-R-Wall®

**Waterproofing products that
won't waste your time or
ruin your reputation.**



Absolute Confidence

Never wonder and worry, with Rub-R-Wall® your structure is waterproof, and your bottom line protected.



No Wasted Time or Money

Cut return visits down to zero, Rub-R-Wall® is one and done.



Proven

For over 30 years we've made sure thousands of structures across North America are truly waterproof.

All products proudly made in the USA

(770) 410-1545



rubrwall.com



Rub-R-Wall®

The gold standard in waterproof coatings.

- ✓ 100% Polymer coating
- ✓ Used for waterproofing below-grade application
- ✓ Lifetime Warranty available
- ✓ Spray, brush, or roll on
 - ✓ Quick curing
- ✓ Ideal for concrete or ICF



Rub-R-Wall®

Seamless Waterproofing Protection for Residential and Commercial Foundations

Every foundation has one enemy that never quits: water. That's why thousand of contractors and homeowners across North America trust Rub-R-Wall® — a spray-applied, -seamless waterproofing membrane that bonds directly to the foundation wall, keeping basements dry and structures strong.

Why Choose Rub-R-Wall®?

- **Seamless Barrier:** Spray-applied to create a continuous, watertight membrane.
- **Flexibility:** Bridges small cracks and joints without tearing.
- **Durability:** Resistant to soil chemicals, algae, fungus, and bacterial attack.
- **Non-Absorptive:** Does not take on water, even in saturated soil conditions.
- **Longevity:** Projected life expectancy of 100+ years using Arrhenius Projection Theory.
- **Environmentally Friendly:** Asphalt-free formulation for a cleaner jobsite and long-term sustainability.

How Rub-R-Wall® Works

Rub-R-Wall® is a liquid-applied, 100% rubber all-polymer membrane. It's sprayed onto prepared foundation walls — poured concrete, block, ICF, or parged CMU — and quickly cures into a flexible, bonded coating.

- **Adhesion:** Bonds tenaciously to masonry, ICF, and concrete.
- **Flexibility:** Remains pliable even in low temperatures.
- **Crack Bridging:** Rub-R-Wall® elongation allows membrane to bridge shrinkage cracks without water penetrating or tearing.
- **Hydrostatic Resistance:** Withstands water pressure exceeding 138 feet of head (AST-MD5385).
- **pH Tolerance Down to 1.5:** A lower pH ensures the membrane won't break down in some of the harshest environments.

Rub-R-Proof

The cost-effective waterproofing that flexes, seals, and gets the job done, even in cold weather.

- ✓ Asphalt emulsion water-based coating
 - ✓ Black in color
 - ✓ Ideal for large volume projects
 - ✓ Available in drums, totes or in bulk
 - ✓ Cold-weather ready, applies down to 20°F
- ✓ Faster cure times mean faster backfill and tighter schedules
- ✓ Resists mold, bacteria, and breakdown over time
- ✓ 10-Year Warranty Available



Rub-R-Proof

Cost-Effective Foundation Waterproofing That Gets the Job Done

For everyday foundation builds where performance and budget both matter, Rub-R-Proof delivers. This liquid-applied, polymer-modified asphalt emulsion is a black, water-based coating designed for below-grade poured concrete and parged block foundations. It's simple, reliable, and ideal for large volume projects where efficiency and cost savings are critical.

Spray it. Roll it. Brush it. Rub-R-Proof creates a continuous waterproofing barrier protecting foundations for years.

Why Choose Rub-R-Proof?

Rub-R-Proof balances value with performance. It's not a basic asphalt coating — it's polymer-modified, which means enhanced flexibility and adhesions; it's more durable under stress and better at sealing against water intrusion.

- **Cost-Effective:** Designed as a practical solution for everyday jobs without cutting corners.
- **Cold-Weather Friendly:** Can be applied at temperatures as low as 20°F, extending your working season.
- **High Elongation:** Rub-R-Proof stretches with foundation movement instead of cracking.
- **Mold & Bacteria Resistant:** Tested to ASTM standards, showing no degradation.
- **Water-Based, Low-Odor Formula:** Safer and easier to work with than older solvent-based products.

Application Made Easy

- **Timing:** Apply as soon as forms are stripped on poured concrete or when mortar is dry on block walls.
- **Flexible Application:** Can be applied by spray, brush, or roller — whatever the site requires.
- **Coverage:** Apply evenly for a wet thickness of 60 mils (wet), 40 mil (dry); the finished job should be smooth and free of voids.
- **Cure Time:** Typically cures in 16–24 hours.



Rub-R-Seal

The invisible, breathable barrier that protects masonry and concrete from water damage without changing the look of the surface.

- ✓ Penetrates and bonds within masonry and concrete with no peeling, no flaking
- ✓ Prevents efflorescence, spalling, and moisture intrusion
- ✓ Breathable barrier stops water while letting vapor escape
- ✓ Won't alter the surface appearance
- ✓ Fast, one-step application with 24-hour cure time



CMU block wall **coated with Rub-R-Seal** repelling water immediately after was applied

CMU block wall **without** Rub-R-Seal after being sprayed with water

Rub-R-Seal

The Invisible Shield for Brick, Masonry, and Concrete

Water is the number one enemy of masonry, concrete, and brick. It seeps in, freezes, expands, and causes cracks. It carries salts that leave behind white efflorescence. Over time, it breaks down surfaces, shortens lifespans, and leads to costly repairs.

That's where Rub-R-Seal steps in — a clear, water-based treatment that penetrates surfaces and creates a permanent crystalline barrier inside the material. Rub-R-Seal bonds within the substrate itself, forming an invisible defense that blocks moisture while allowing the surface to breathe.

Why Choose Rub-R-Seal

- **Integral Barrier:** Creates a crystalline structure within the material, not just on the surface.
- **Breathable:** Allows vapor transmission to prevent condensation and mold growth.
- **Fast Application:** One-step, quick-drying process; cures fully within 24 hours.
- **Versatile:** Can be painted, plastered, or tiled over without issues.
- **Odorless & Colorless:** No harsh smells, no visual change to the surface.
- **Efflorescence Control:** Stops salt deposits from forming on brick and masonry.

How Rub-R-Seal Works

- **Penetrates deep into the surface.**
- **Crystallizes inside the pores of the material.**
- **Prevents water migration without sealing the surface shut.**
- **Maintains breathability, avoiding trapped moisture problems.**

The result is a treatment that's invisible, effective, and durable — no glossy film, no color change, no gimmicks. Just long-term moisture protection.

Rub-R-Drain

The high-flow, no-gravel foundation drainage system that installs fast and keeps water moving without a mess.

- ✓ Replaces gravel and pipe with lightweight, high-performance rolls
- ✓ Moves water fast, 30 gpm/ft flow rate even under pressure
- ✓ Blocks soil fines with integrated non-woven filter fabric
- ✓ Withstands heavy loads, 9,500 psf compressive strength
- ✓ Installs quickly, with less labor, no hauling, no heavy equipment



Rub-R-Drain

High-Flow Foundation Drainage That Replaces Gravel Systems

Every foundation waterproofing system needs a reliable way to get water away from the wall. For decades, that's meant the same thing: hauling tons of gravel, laying perforated pipe, and hoping the system doesn't clog with soil fines. It's labor-intensive, costly, and not always effective.

Rub-R-Drain changes the game. This modular composite drainage and collection system uses a 3-dimensional, high-flow polypropylene drainage core wrapped in a non-woven filter fabric.

Why Choose Rub-R-Drain?

- **No More Gravel Loads:** Eliminates the cost and labor of trucking, hauling, and backfilling with stone.
- **High Flow Capacity:** In-plane flow rates of 30 gpm/ft width keep water moving even under soil pressure.
- **Foundation Protection:** Relieves hydrostatic pressure and prevents water from pushing against walls.
- **Chemical Resistance:** Safe to use where soils may contain salts, acids, or other contaminants.
- **Easy Installation:** Lightweight rolls with widths from 6" to 36" make for flexible design options.

How Rub-R-Drain Works

Rub-R-Drain uses a cusped polypropylene sheet formed under heat and pressure into a dimpled core. This creates continuous vertical channels that move water down to a collection system.

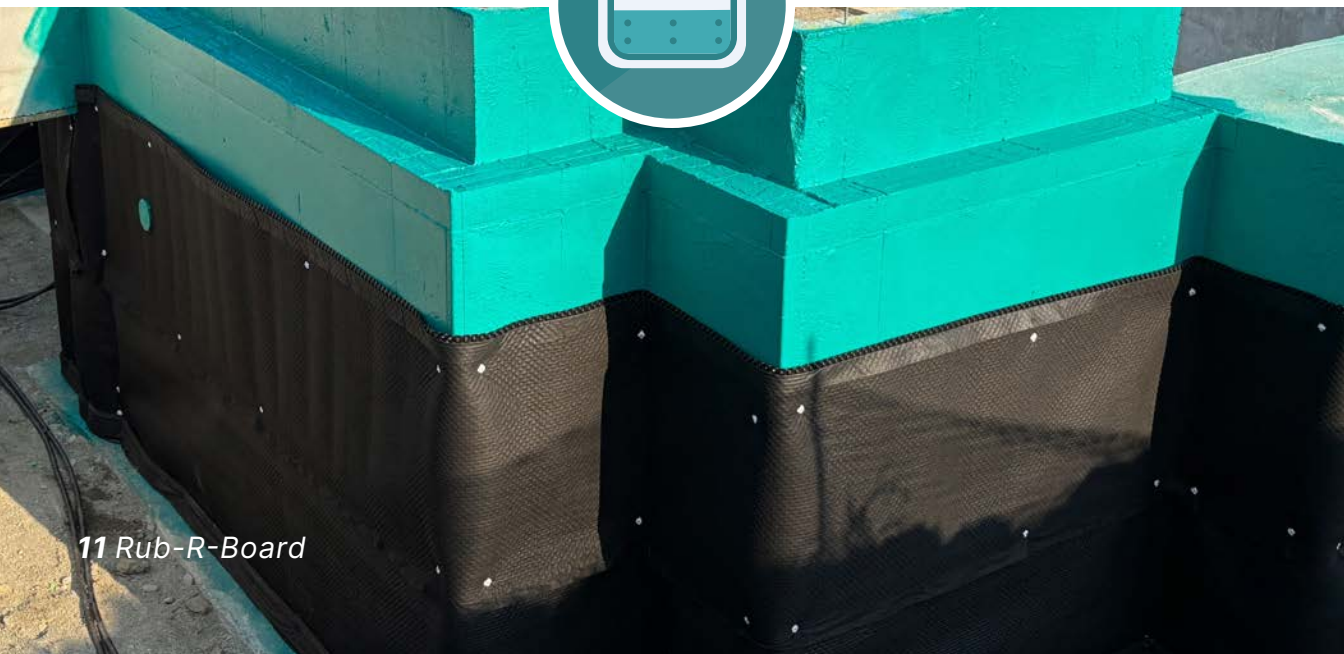
- **Filter Fabric:** Retains soil while allowing water to enter the core.
- **Drainage Core:** Maintains open flow channels, even under heavy soil loads.
- **Hydrostatic Relief:** Channels water away so it doesn't build up against the wall.



Rub-R-Board®

Rub-R-Board, engineered for the Rub-R-Wall System, defends your waterproofing and drains foundations fast

- ✔ Protects the Rub-R-Wall membrane from punctures during backfill
- ✔ Relieves hydrostatic pressure as it channels water away from the foundation
- ✔ Maintains long-term performance of waterproofing system.
- ✔ Installs easily with lightweight rolls in multiple widths



Rub-R-Board

The Drainage Board That Protects Waterproofing and Relieves Hydrostatic Pressure

Every contractor knows: waterproofing a foundation is only half the battle. The real test comes when soil, groundwater, and backfill push relentlessly against that membrane. Without proper drainage, hydrostatic pressure builds up. Without a protection course, rocks puncture the waterproofing during backfill. Either way, you're left with a compromised system.

That's why the Rub-R-Wall Waterproofing System isn't complete without Rub-R-Board—a dimpled drainage and protection board engineered to do two critical jobs at once:

1. Protect the membrane from damage during backfill.
2. Channel water away from the foundation to relieve hydrostatic pressure .

Why Contractors Choose Rub-R-Board:

Hydrostatic Pressure Relief: With flow rates up to 12.5 g/min/ft (155 L/min/m) under load, Rub-R-Board ensures water doesn't linger at the foundation.

- **Membrane Protection:** Resists punctures with a CBR puncture strength of 250 lbs. High Compressive Strength: Handles 5,200 psf (249 kNm²) of soil load without crushing.
- **Durability:** UV resistant (70% strength retention at 500 hours) and engineered for long-term soil contact.
- **Easy Installation:** Available in multiple roll widths (4, 6, and 8 ft) to match foundation sizes.
- **Lightweight & Manageable:** Roll weights as low as 35 lbs. make it easy for crews to handle.

How Rub-R-Board Works

Rub-R-Board is built with a light-duty impermeable polymeric sheet, heat-formed into a dimpled core. On top of that sits a bonded non-woven filter fabric that allows water to pass while blocking soil particles and fine debris.

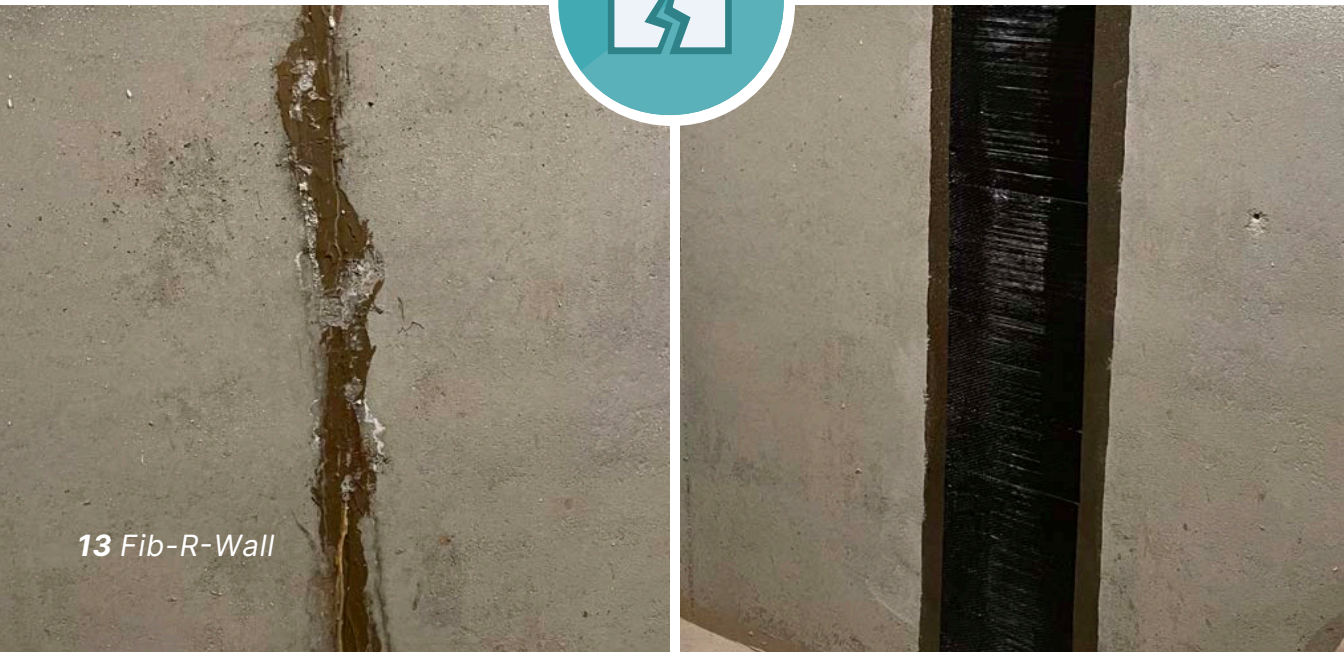
- **Filter Fabric:** Keeps soil, sand, and grout out of the drainage system.
- **Dimpled Core:** Creates continuous drainage channels that move water vertically down to perimeter collection systems.
- **Protection Layer:** Acts as a buffer between sharp backfill rock and the waterproofing membrane.

By combining these functions, Rub-R-Board doesn't just drain water — it protects the entire waterproofing investment.

Fib-R-Wall

A high-strength, non-corrosive carbon fiber system that reinforces concrete and masonry walls

- ✓ Carbon Fiber wall bracing fabric
- ✓ Reinforce concrete and masonry
- ✓ Unidirectional or bidirectional weave
- ✓ Non-corrosive, maintenance-free, no rust, no callbacks
- ✓ Fast, lightweight installation
- ✓ Engineered for bowing, cracking, and lateral pressure in basement walls



Fib-R-Wall

Carbon Fiber Reinforcement for Concrete and Masonry Walls

Concrete and masonry walls are designed to last for decades — but when cracks form or structural stresses exceed expectations, standard patching compounds and steel reinforcements often fall short. Contractors need a solution that's strong, lightweight, non-corrosive, and easy to install in the field.

That's where Fib-R-Wall comes in. Built from high-strength carbon fiber fabric, Fib-R-Wall is engineered to reinforce poured concrete and block walls from the inside. It delivers the strength of steel without the bulk, corrosion risk, or difficult installation.

Why Choose Fib-R-Wall?

Fib-R-Wall is quickly becoming the contractor's go-to wall reinforcement system because it solves common problems with traditional reinforcement methods:

- **Incredible Strength:** Dry fiber tensile strength exceeds 720 ksi, with a tensile modulus greater than 34 msi.
- **Non-Corrosive:** Unlike steel, Fib-R-Wall will not rust or degrade inside masonry walls.
- **Lightweight & Easy to Apply:** No heavy steel beams, no invasive demolition.
- **Versatile Fabric Options:** Available in both unidirectional and bidirectional weaves for targeted reinforcement .
- **Permanent Repair:** Once bonded with epoxy, Fib-R-Wall becomes an integral part of the wall system.

How Fib-R-Wall Works

Fib-R-Wall uses a carbon fiber fabric + epoxy resin system to create a high strength laminate directly bonded to the wall surface:

1. **Surface Prep:** The wall is cleaned, ground, and leveled to achieve a proper concrete surface profile (CSP 3 or better).
2. **Epoxy Adhesive/Filler:** Voids and mortar joints are filled with Fib-R-Wall Epoxy Filler Compound.
3. **Resin Saturation:** A two-part epoxy resin is mixed and rolled onto the wall at ~20 mil thickness.
4. **Fabric Application:** Carbon fiber fabric strips are cut, aligned vertically, and pressed into the resin.
5. **Topcoat Resin:** A second coat of resin is applied over the fabric, fully encapsulating the reinforcement.



Rub-R-Therm

Insulated drainage board for the Rub-R-Wall® system that protects foundations from moisture, boosts energy efficiency, and stands up to backfill

- ✓ Insulates and drains in one step: R-3, R-5, and R-10 options available in 3' x 4' or 4' x 8' sheets
- ✓ Made from 70% recycled PET fibers: no fiberglass, no irritation
- ✓ Drains fast: Up to 626 gallons/hour/ft of in-plane flow
- ✓ Built tough: Withstands backfill without collapsing or degrading
- ✓ Breathable properties make it a perfect fit for Rub-R-Wall® and Rub-R-Proof to reduce return trips



Rub-R-Therm

Eco-Friendly Insulation Drainage Board for Smarter Waterproofing

Traditional foundation insulation and drainage boards have always come with trade-offs. Fiberglass is itchy and miserable to handle. Fiberglass and rigid foam board can break down, waterlog, or leach chemicals over time. And many alternatives simply don't hold up during backfill.

That's why contractors are making the switch to Rub-R-Therm — a recycled PET fiber insulation drainage board that combines thermal performance, drainage capability, and superior durability into one easy-to-use product. Rub-R-Therm is not only eco-friendly but also engineered to outperform legacy products in real-world below-grade applications.

Why Choose Rub-R-Therm?

Rub-R-Therm was designed to solve the problems contractors face with traditional insulation boards:

- Comfortable to Work With – Gentle on skin, no fiberglass irritation.
- Eco-Friendly – Manufactured with 70% recycled PET carpet fibers, reducing landfill waste.
- Drainage Power – In-plane flow rates up to 626 gallons/hour/ft
- Durability Under Backfill – Thermal binding technology locks fibers in place, preventing washout, leaching, or structural collapse.
- Long-Term Reliability – Maintains structure and drainage capacity

How Rub-R-Therm Works:

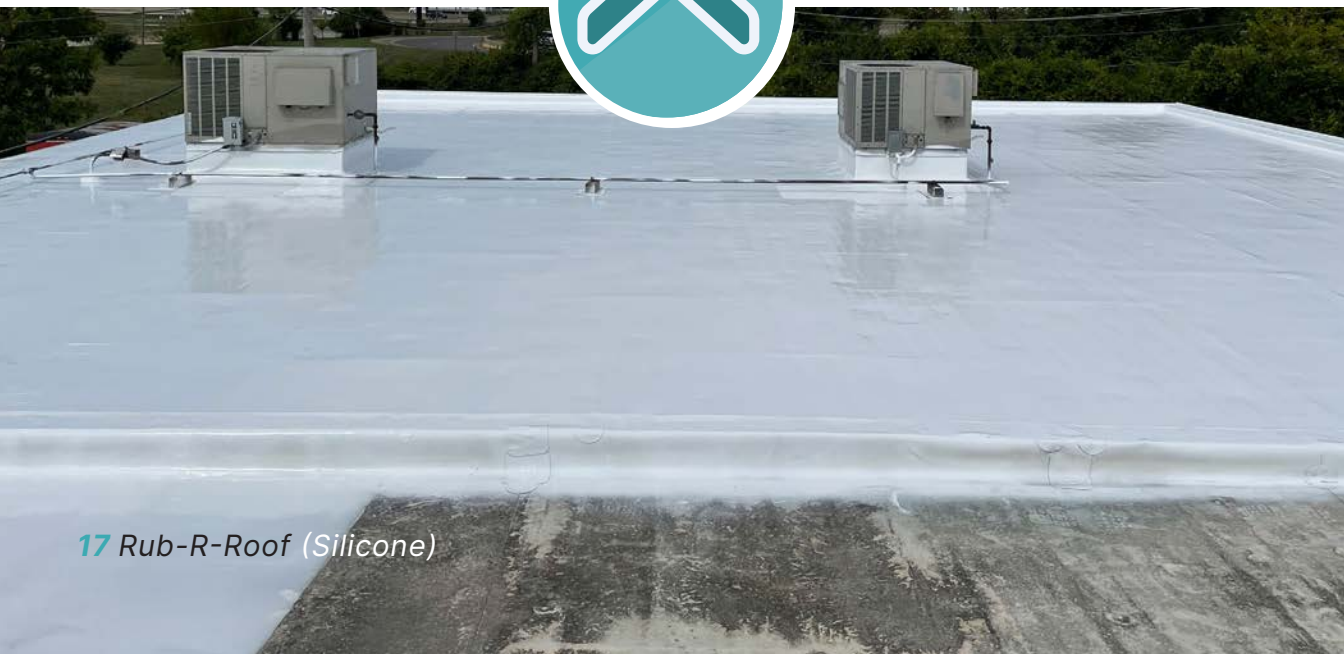
- Rub-R-Therm combines insulation and drainage into a single board.
- PET Fiber Core: Provides thermal resistance and flexibility.
- Thermal Bonding: Fibers are heat-fused for strength, so they won't leach, wash out, or degrade.
- Compression Resistance: Strong enough to survive backfill while keeping its shape and function.

Rub-R-Roof[®]

(Silicone)

Rub-R-Roof is a self-leveling roof coating that seals and protects flat roofs with a bright, reflective finish.

- ✓ 100% solid silicone, no shrinkage, no solvents, built to last
- ✓ Self-leveling formula fills cracks, gaps, and low spots with ease
 - ✓ Applies by roller, spray, or squeegee
- ✓ Bright white, UV-resistant surface reflects sunlight and reduces heat gain
- ✓ Ideal for flat roofs, seals tight and handles ponding water



Rub-R-Roof (Silicone)

Self-Leveling Silicone Protection for Flat Roofs

Flat roofs take a beating, from standing water to relentless sun exposure, and once water starts pooling, traditional coatings often shrink, crack, or peel away. That's where Rub-R-Roof stands apart.

Rub-R-Roof is a 100% silicone, self-leveling roof coating engineered to seal and protect flat or low slope roofs with a seamless, reflective finish. It fills cracks, gaps, and uneven areas while forming a durable, UV-resistant membrane that handles ponding water with ease.

Why Contractors Choose Rub-R-Roof

- 100% Solid Silicone: Won't shrink or degrade—no solvents, no fillers.
- Flexible and Long-Lasting: Withstands rooftop movement and weather cycles without cracking.
- Energy Efficient: Reflective surface reduces heat absorption and can improve building efficiency.
- Seals Without Stress: Fills imperfections with ease, creating a reliable, watertight barrier.
- Ponding Water Approved: Specifically designed to perform even where water collects.

How Rub-R-Roof Works:

Rub-R-Roof is built on 100% solid silicone chemistry, meaning no solvents, no shrinkage, and no compromise.

- Self-Leveling Formula: Automatically spreads and smooths into low spots, cracks, and seams.
- Multiple Application Methods: Can be applied by roller, spray, or squeegee, depending on the job.
- Reflective White Finish: Bright surface resists UV damage and helps reduce rooftop heat gain.
- Built to Handle Ponding Water: Unlike many coatings, Rub-R-Roof remains flexible and watertight under standing water.

Once cured, the result is a seamless, highly elastic coating that protects your roof from the elements year after year.



Rub-R-Roof[®]

(Acrylic)

A flexible, reflective acrylic roof coating that restores, protects, and cools low-slope roofs — without the high cost of replacement.

- ✔ Highly elastic 100% acrylic formula flexes with the roof to resist cracking, peeling, and thermal stress
- ✔ Bright white finish reflects up to 85% of sunlight, reducing rooftop temperatures and cooling costs
- ✔ Compatible with a wide range of roof types



Rub-R-Roof (Acrylic)

Elastic, Reflective Roof Protection for Commercial and Low-Slope Roofs

Not every roof needs the extreme ponding-water performance of silicone. Many commercial and low-slope roofs benefit more from a highly elastic, UV-reflective, breathable coating that strengthens the roof surface while improving energy efficiency. That's exactly where Rub-R-Roof (Acrylic) shines. Rub-R-Roof (Acrylic) is a 100% acrylic elastomeric coating engineered to restore weathered roofs, seal small cracks, and create a bright white, reflective surface that helps reduce building heat gain.

Why Choose Rub-R-Roof (Acrylic)?

Contractors rely on Rub-R-Roof (Acrylic) because it strikes a highly desirable balance between performance, elasticity, and affordability.

- **100% Acrylic Elastomeric Formula:** Offers rubber-like flexibility to handle building movement, thermal cycling, and seasonal expansion and contraction.
- **Bright White, High-Reflectivity Finish:** Initial reflectivity of 0.85 and aged reflectivity of 0.76 dramatically reduce rooftop temperatures, helping offset cooling costs.
- **Elastic & Crack-Resistant:** With 240% elongation and 275 psi tensile strength, Rub-R-Roof (Acrylic) flexes with the building instead of cracking or peeling.
- **Compatible with Many Roof Types:** Metal roofs, Modified bitumen, Asphalt BUR, EPDM, PVC, Hypalon, Concrete roofs, Masonry walls
- **Energy-Efficient & Code-Compliant:** Meets ASTM D6083 Type I, supports Urban Heat Island provisions, and is approved under the Florida Building Code.

How Rub-R-Roof (Acrylic) Works

Rub-R-Roof (Acrylic) Forms a Fully Elastic Waterproof Membrane: The 100% acrylic resin system stretches with rooftop movement while maintaining surface adhesion and film integrity.

- **Multi-Coat System for Durability:** A Rub-R-Roof Acrylic system requires A #1000 series acrylic base coat followed by Rub-R-Roof (Acrylic) topcoats at 1.25–1.5 gal/100 sq. ft. per coat.
- **High Solar Reflectivity:** With an SRI (Solar Reflectance Index) of 107, Rub-R-Roof (Acrylic) significantly lowers roof temperatures and helps improve building energy performance.

Rub-R-Flash

Rub-R-Flash seals doors, windows, and tight corners to keep water out and complete your above-grade waterproofing system.

- ✓ Creates a watertight seal around windows, doors, and building envelope penetrations
- ✓ Stops leaks before they start by sealing vulnerable transition points
- ✓ Ideal for transitions between substrates



Rub-R-Flash

Complete Building Envelope Protection

Water doesn't need much to sneak in, a small gap around a window, a missed corner, or an unsealed door flange can turn into a costly leak. Rub-R-Flash is the flexible, self-adhered, above-grade flashing solution that seals these vulnerable areas before water has a chance to get in.

Designed for windows, doors, and tight transitions, Rub-R-Flash installs easily and bonds aggressively to the building envelope. Whether it's new construction or retrofit, this peel-and-stick flashing ensures a watertight seal where it matters most.

Why Choose Rub-R-Flash:

- Creates a watertight seal around doors, windows, and openings.
- Prevents leaks before they start by covering the most common failure points.
- Quick, tool-free install—perfect for jobsite speed and flexibility.
- Flexible and durable—conforms to complex shapes without tearing or peeling.
- Essential for above-grade envelope protection in both residential and commercial builds.

How Rub-R-Flash Works:

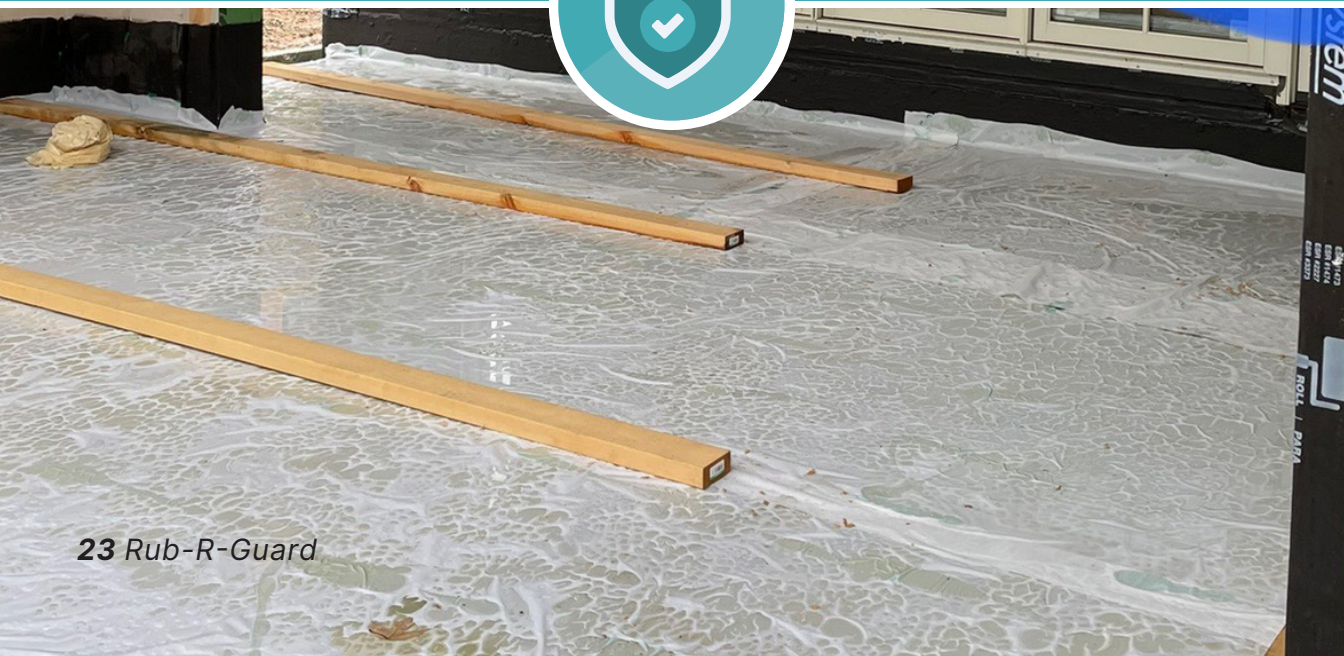
Rub-R-Flash is built to do the detailed work—sealing the small, high-risk areas that larger systems can't cover alone.

- Peel-and-Stick Application: No sprayers or tools required. Just peel, position, and press into place.
- Flexible & Conformable: Easily wraps around corners, curves, and flanges for full coverage.
- Above-Grade Protection: Ideal for windows, doors, and envelope penetrations where water often tries to enter.
- Seamless Integration: Completes the waterproofing system by connecting fluid-applied barriers to framing details.
- Once installed, Rub-R-Flash provides a continuous, watertight layer of protection—one that's often overlooked but critical to the building's long-term performance.

Rub-R-Guard

Flexible, high-strength poly sheeting that shields foundation waterproofing from punctures, tears, and backfill damage.

- ✓ Protects membranes during backfill
- ✓ Cross-laminated HDPE resists punctures and tears from sharp rock and debris
- ✓ Flexible in extreme conditions, works from -70°F to 180°F
- ✓ Low perm rating (0.045 perms) adds extra moisture defense
- ✓ Installs fast with lightweight, large-format rolls



Rub-R-Guard

The Protection Course for Long-Lasting Foundation Waterproofing

Waterproofing membranes create a seamless barrier against water intrusion. But once that foundation is backfilled, sharp rocks and construction debris can puncture even the toughest membrane if it's left exposed.

That's why Rub-R-Guard exists. This cross-laminated polyethylene protection course is engineered to shield foundation waterproofing membranes from damage during backfilling. Strong, flexible, and durable, it ensures that your waterproofing system performs as designed — not compromised by a stray rock.

Why Rub-R-Guard Matters:

Waterproofing membranes are only as strong as their weakest point. A single puncture can create a pathway for moisture intrusion that undermines the whole system.

Contractors use Rub-R-Guard because it delivers:

- **Superior Tear & Puncture Resistance:** Cross-laminated HDPE construction provides balanced strength in all directions.
- **Moisture Retardant:** With a perm rating of just 0.045 perms, Rub-R-Shield also adds an extra layer of moisture control.
- **Durability Against Backfill Rock:** With tensile strength up to 6,151 psi and tear resistance tested by ASTM methods, it's built to withstand backfill stress.
- **Temperature Stability:** Remains flexible in extreme cold (down to -70°F) and stable in high heat (up to 180°F).
- **Longevity:** Will not rot, mildew, or degrade in contact with soil and moisture.

How Rub-R-Guard Works:

Rub-R-Guard is applied directly over the cured waterproofing membrane and acts as a physical armor that absorbs abrasion, punctures, and pressure.

- **Cross-Lamination = Equal Strength:** The unique manufacturing process stretches two sheets of HDPE film and laminates them at opposing angles. This creates uniform strength across the sheet, so it resists tears in any direction.
- **Flexible Installation:** Available in large roll sizes (up to 20' wide), accordion-folded for quick deployment; at 3 mil thickness it's easy to cut and apply.



Rub-R-Patch

Rub-R-Patch is a mastic that fills tie holes, cracks, and minor imperfections to create a seamless surface.

- ✓ Engineered for surface prep: Ideal for tie holes, honeycombs, and minor cracks
- ✓ Built to move: 1,300% elongation means it flexes without cracking
 - ✓ Sticks and stays
 - ✓ Handles water pressure
 - ✓ Cold-weather ready



Rub-R-Patch

The Surface Prep Product That Sets Waterproofing Up for Success

Before you apply any membrane, you need a foundation that's sealed, smooth, and ready to perform. That's where Rub-R-Patch comes in—an elastomeric filler designed to prep concrete and masonry for long-term waterproofing performance.

From tie holes and honeycombs to minor cracks and voids, Rub-R-Patch fills imperfections quickly and flexes with the structure to prevent future failure. It's the prep step that protects your system from the inside out.

Why Contractors Choose Rub-R-Patch:

- Engineered for surface prep—ideal for tie holes, honeycombs, and cracks.
- Eliminates weak spots that lead to membrane failure and callbacks.
- Sticks and stays with strong adhesion and long-term hold.
- Low-odor formula makes jobsite cleanup easy.

How Rub-R-Patch Works:

Rub-R-Patch is a single-component compound applied with a simple putty knife. It's engineered to create a uniform surface that bonds tightly with spray-applied waterproofing membranes like Rub-R-Wall.

- Easy Application: Apply by hand at 30–40 mils to fill surface defects.
- Flexible Formula: Stretches up to 1,300% without cracking or separating.
- Strong Adhesion: Bonds permanently to concrete and masonry surfaces.
- Hydrostatic Resistance: Built to withstand water pressure behind the wall.
- Once cured, it forms a durable, seamless prep layer that waterproofing membranes can adhere to with confidence.



Rub-R-Wrap

The fluid-applied air barrier that seals tight, breathes right, and won't break down.

- ✓ Fluid-applied, seamless protection: no taped seams, no guesswork
- ✓ Vapor-permeable & mold-resistant: lets walls dry while keeping water out
- ✓ Bonds to virtually any surface: ICF foam, CMU, concrete, sheathing, and more
- ✓ Permanently UV-resistant: no rush to get cladding up
- ✓ Meets and exceeds air barrier performance standards: ASTM E2178 compliant



Rub-R-Wrap

The Vapor-Permeable Air Barrier That Works as Hard as You Do

You can't stop the rain, the wind, or the constant push of outside air — but you can control what gets into your building envelope. That's the power of Rub-R-Wrap, a high-performance, fluid-applied acrylic membrane that cures into a seamless barrier around your walls.

Whether you're building a commercial cavity wall system or wrapping a modern multifamily project, Rub-R-Wrap is designed to stop air infiltration and exfiltration while still allowing vapor to escape. The result? Dry, energy-efficient, durable buildings that resist mold, condensation, and costly callbacks.

Why Rub-R-Wrap Matters:

- Air Tightness – Stops uncontrolled air leaks that drive up energy costs.
- Vapor Permeability – Lets water vapor pass through, preventing condensation inside walls.
- UV Resistance – Can be left exposed to sunlight permanently without breaking down.
- Full Adhesion – Bonds seamlessly to CMU, concrete, exterior sheathing, OSB, wood, and even metal.

It's not just a "wrap." It's a fully engineered air and moisture control system that keeps buildings drier, tighter, and more efficient.

Key Features of Rub-R-Wrap:

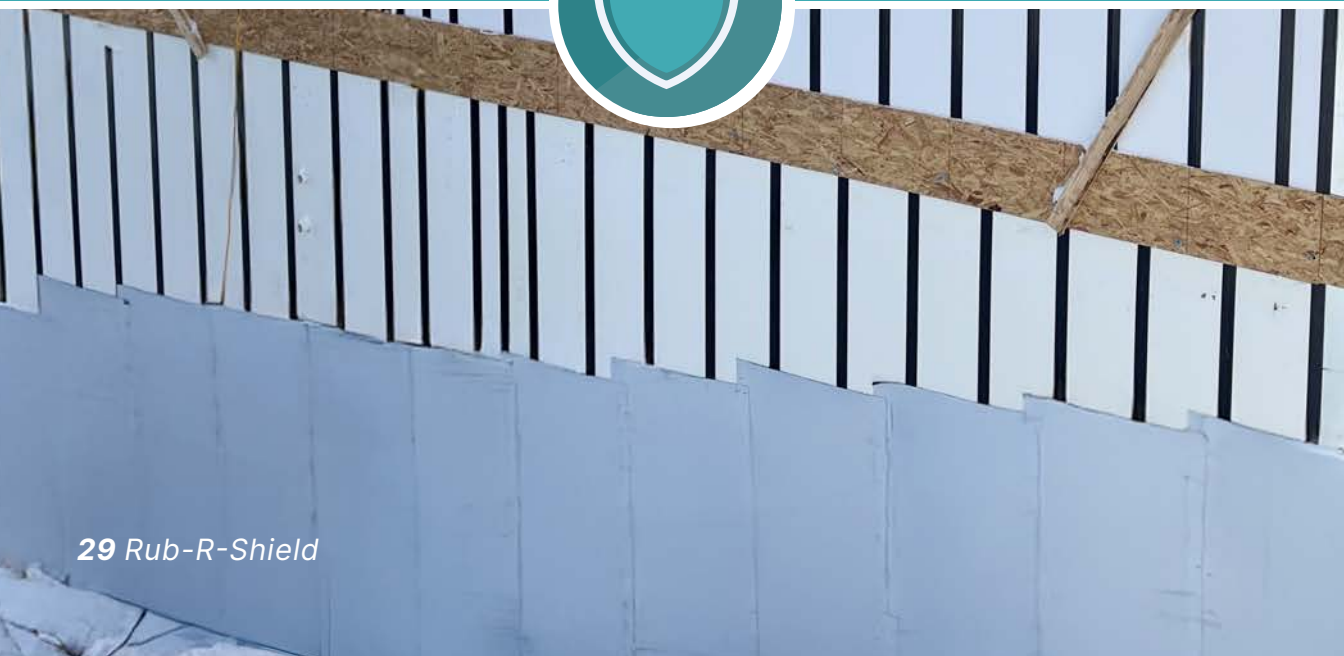
- Spray-Applied – Quick, low-cost, monolithic installation.
- Breathable – With a water vapor permeance of 12 perms (ASTM E96), it ensures drying potential while keeping liquid water out.
- Extreme Flexibility – With 1,000% elongation and crack-bridging capability at -26°C, it won't fail when buildings shift or climates fluctuate.
- Strength Under Pressure – Tensile strength of 300 psi keeps the barrier intact against building movement.
- Energy Efficiency Boost – Meets ASTM E2178 air leakage performance requirements with a rating of >0.004 cfm/sq. ft .
- Bottom line: Rub-R-Wrap doesn't just meet code. It exceeds it — giving you peace of mind on every project.



Rub-R-Shield

Rub-R-Shield is a peel-and-stick air and vapor barrier.

- ✓ Stops air leaks cold—creates a continuous, self-adhered barrier against infiltration and exfiltration
- ✓ Keeps walls dry—0.05 perms of vapor transmission prevent condensation and mold
- ✓ Built to last—40 mils thick with 750 psi tensile strength
- ✓ Adheres to almost anything—compatible with concrete, ICF, masonry, wood, and metal substrates



Rub-R-Shield

Self-Adhered Air and Vapor Barrier for High-Performance Walls

Contractors and architects turn to Rub-R-Shield — a self-adhered air barrier membrane engineered to stop air infiltration and exfiltration while maintaining durability under real world conditions.

Applied as part of the Rub-R-Wall waterproofing system or as a standalone barrier in cavity wall construction, Rub-R-Shield delivers the airtight, weather-resistant protection modern building envelopes demand.

Why Choose Rub-R-Shield:

Unlike basic housewraps that rely on taped seams and can tear under stress, Rub-R-Shield is a composite membrane that bonds directly to the substrate. It's built to handle wind, stack effect, and pressurization forces without failing.

- **Seamless Adhesion:** Provides a structurally sound, continuous air barrier.
- **Durable Thickness:** 40 mils of protection with robust puncture resistance.
- **Moisture Protection:** Water vapor transmission rate of just 0.05 perms, keeping walls dry.
- **High Strength:** Tensile strength of 750 psi
- **Compatibility:** Works with concrete, masonry, wood, metal, and more.

How Rub-R-Shield Works:

Rub-R-Shield is made of a rubberized asphalt layer bonded to a cross-laminated polyethylene film. Together, these layers form a tough, flexible sheet that is self-adhered to the substrate.

- **Roll Application:** Easy to handle on-site.
- **Overlap Sealing:** Lapped a minimum of 2" at seams and pressed into place for continuous coverage.
- **Primer System:** Installed over Rub-R-Wall primer for maximum adhesion.
- **Protection Window:** Can be left exposed for up to six weeks before covering with insulation or cladding.
- **Repairable:** Damaged sections can be patched with additional Rub-R-Shield for a seamless fix.



Become a Rub-R-Wall Dealer

A Rub-R-Wall dealership is a turnkey waterproofing business that meets genuine needs in a growing market, with access to all Rub-R-Wall® premium products, and expert training.



Get set up quickly with the materials and training you need.



Start earning revenue right away.

A Dealership Includes:

- ✓ A Rub-R-Wall branded trailer with spray equipment and product to begin earning money immediately.
- ✓ Product, industry, and technical training with experts before you get started and on-going training during the life of your business.
- ✓ Options for software making estimates accurate and easy.

How To Become a Rub-R-Wall Dealership

1. Let us know you're interested.

Scan the QR code below or visit our website RubRWall.com and fill out an inquiry form.

2. Schedule a call, we'll talk through your goals and make sure Rub-R-Wall is the right fit.

3. Schedule your training.



Need additional information?

Get in touch to let us know
how our team can help.



rubrwall.com



(770) 410-1545



sales@rubrwall.com

Rub-e-Wall®