



**KDSBUILDING**

XIAMEN KDSBUILDING MATERIAL CO.,LTD

**KDSBUILDING**

High quality materials, perfect service

**Windows And Doors**



XIAMEN KDSBUILDING MATERIAL CO.,LTD

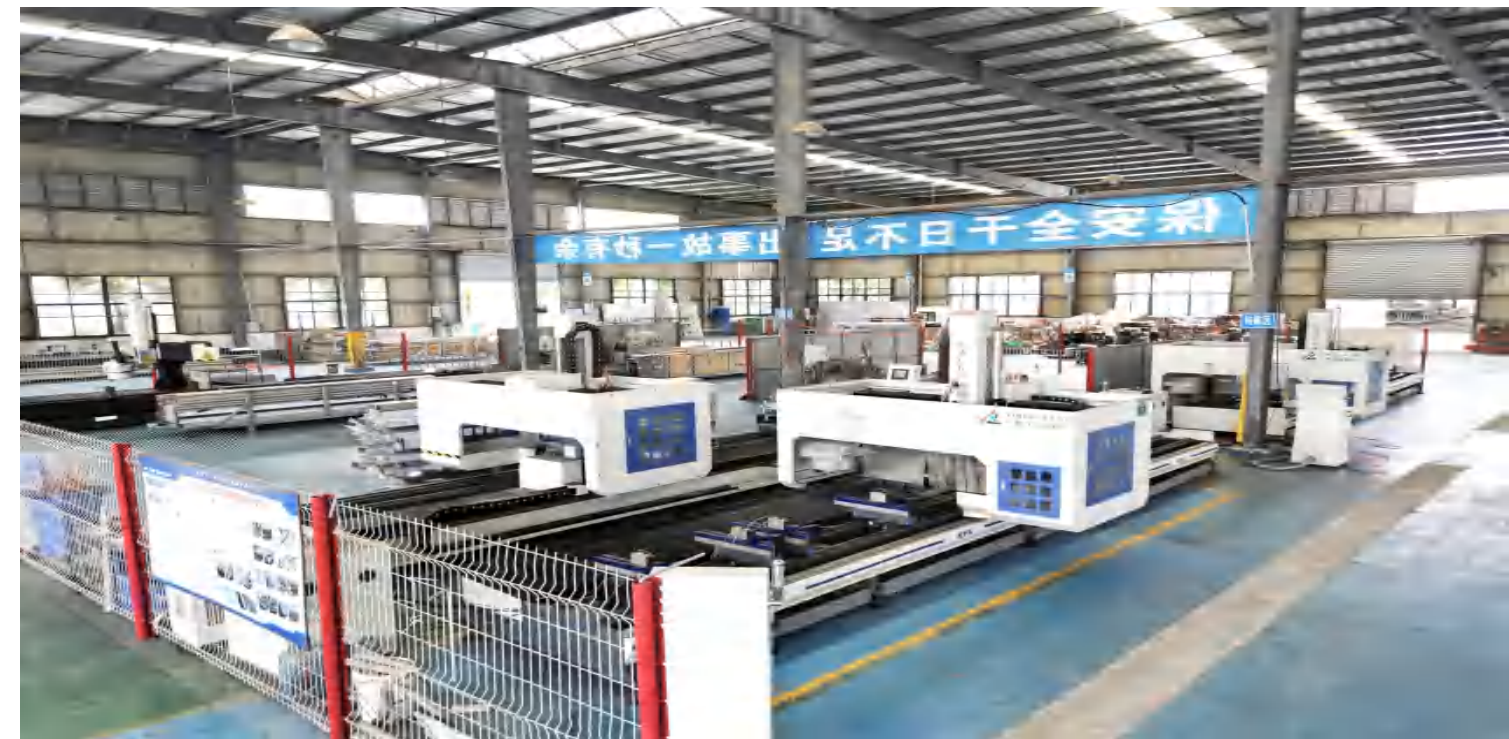
[www.kdsbuilding.com](http://www.kdsbuilding.com)

MP, Whatsapp: 0086-13459252158

E-mail: [ken@kdsbuilding.com](mailto:ken@kdsbuilding.com)

Wechat: 27288590





**Xiamen KDSBuilding Material Co., Ltd** is a leading manufacturer and exporter of window and door for more than 15 years. Our Xiamen plant cover 18000m<sup>2</sup> which near to Xiamen sea port and annual output reaches 100000m<sup>2</sup> of aluminum window and door.

**Our products range:** aluminum window and door, curtain wall, UPVC window and door, shutter and railing, etc. our products have passed the NFRC energy saving, AS2047 standard and CE certification. In our factory we equip the advanced German equipment and window software for production. Our skillful staffs have the responsible and innovative attitude towards each product and craft every detail of the product. We are on the road to product excellence and never stop!

**We have partners** in USA, UK and Philippines and build strong local marketing teams. Our marketing team people have full experience on oversea sales and good language communication with you. We always offer competitive prices, short lead time and good sales-after services for clients, and building long business relationship with clients.

**Now our window and door** have exported to USA, Philippines, Australia, UK, Norway, Canada Caribbean area, etc. And we have successful project cases in these countries.

So please do not hesitate to contact with us if you have any enquiry about our products. Thank you!

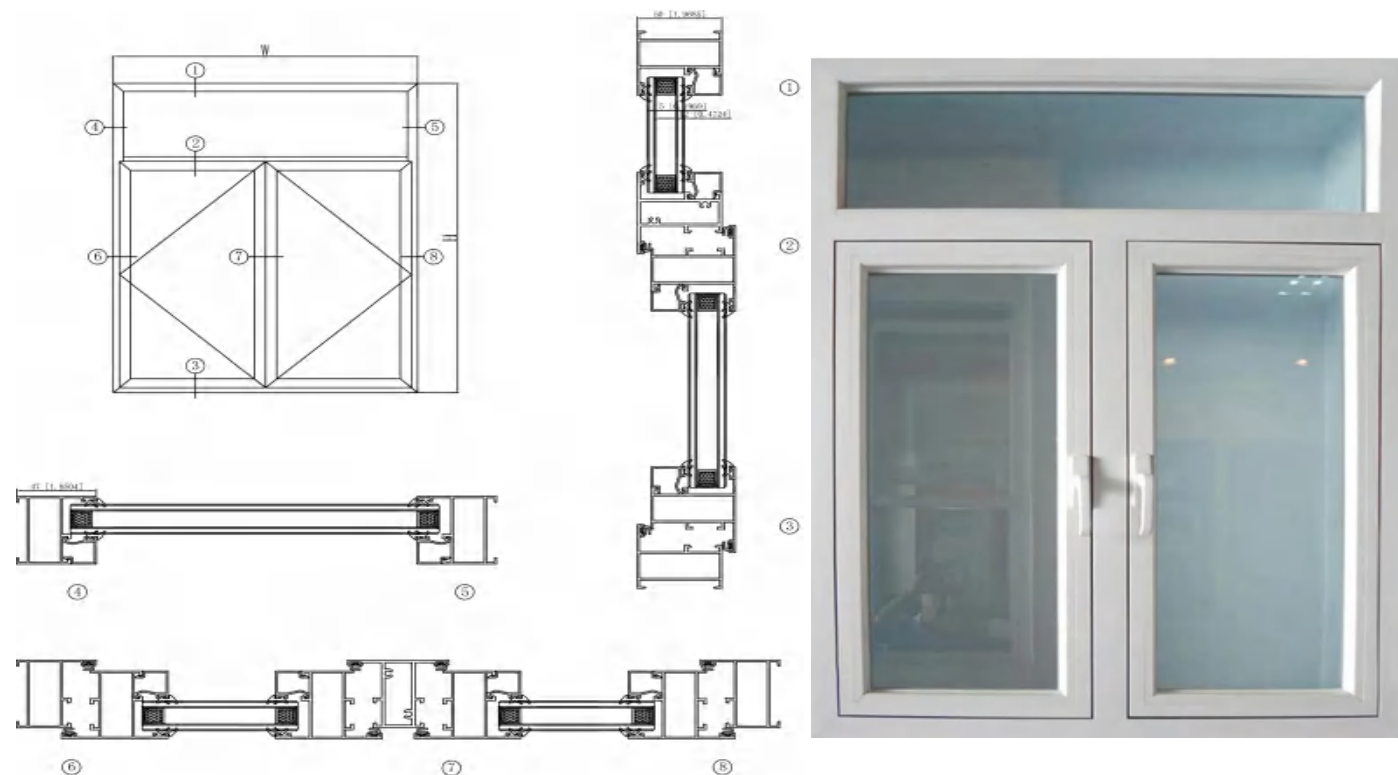


50 ALUMINUM CASEMENT WINDOW	01
55 ALUMINUM TILT AND TURN WINDOW	03
70 ALUMINUM HAND CRANK CASEMENT WINDOW	05
83 ALUMINUM DOUBLE HUNG WINDOW	07
100 ALUMINUM HURRICANE IMPACT SLIDING WINDOW	09
125 ALUMINUM LIFT AND SLIDING DOOR	11
73 ALUMINUM FOLDING DOOR	13
68 ALUMINUM CASEMENT DOOR	15
82 UPVC SINGLE HUNG WINDOW	17
82 UPVC DOUBLE HUNG WITH TILT WINDOW	19
82 UPVC SLIDING AND FIXED WINDOW	21
72 UPVC HAND CRANK CASEMENT WINDOW	23
72 UPVC HAND CRANK AWNING WINDOW	25
60 UPVC CASEMENT WINDOW	27
60 UPVC SLIDING WINDOW	29
60 UPVC CASEMENT DOOR	31
125 UPVC SLIDING DOOR	33
ALUMINUM UNIT CURTAIN WALL	35
MATERIALS	37
PACKAGE	39

# Contents



# 50 SERIES ALUMINUM CASEMENT WINDOW



# ALUMINUM WINDOW AND DOOR

## 50 SERIES ALUMINUM CASEMENT WINDOW

### Aluminum Profile

Wall Thickness 1.4mm for window and 2.0mm for door

### Glass

5mm+12A+5mm double tempered glass  
Glass Option: Low E glass, reflective glass, 5+0.76pvb+5mm laminated glass, SGP laminated glass, tinted glass, frosted glass, all IGCC/SGCC certified

### Energy Performance Ratings

U Factor: 0.3 Solar Heat Gain Coefficient (SHGC): 0.21  
Visible Transmittance: 0.41  
Air Leakage: 0.15  
With NFRC & ENERGY STAR

### Grills

Aluminum and PVC grilles, in hollow glass or stick outside glass.

### Blinds

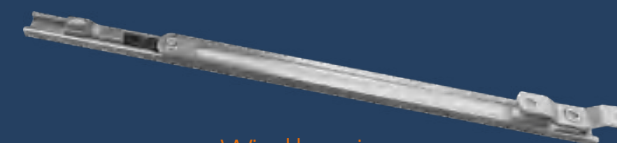
Manual blind (16A 19A 27A) and electric remote control blind (21A, 27A)



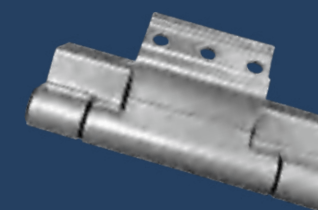
Friction Stay



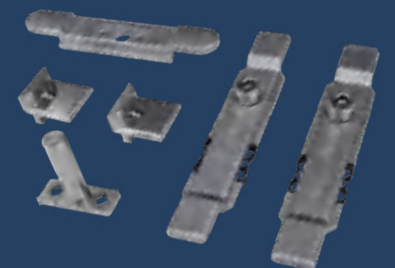
Handle



Wind bracing



Hinge



Drive rod - lock seat - lock point - connector



# ALUMINUM WINDOW AND DOOR

## 55 SERIES ALUMINUM TILT AND TURN WINDOW

55mm Width Thermal Break Aluminum Profile Powder Coated

Wall Thickness: 1.4-1.6mm for window

Sash Width: 520-800mm Height: 700-1500mm Sash Max Load: 60kgs

### Glass

5mm+12A+5mm double tempered glass

Glass Option: Low E glass, reflective glass, 5+0.76pVB+5mm laminated glass, SGP laminated glass, tinted glass, frosted glass, all IGCC/SGCC certified

### Energy Performance Ratings

U Factor: 0.3 Solar Heat Gain Coefficient (SHGC): 0.32

Visible Transmittance: 0.51 With NFRC&ENERGY STAR

### Grills

Aluminum and PVC grilles, in hollow glass or stick outside glass.

### Blinds

Manual blind (16A 19A 27A) and electric remote control blind (21A ,27A)

### Sash

Sash Width: 520mm-800mm

60 casement series are normally flat grills (12A hollow) or square grills (27A hollow)

Sash Height: 700mm-1500mm Maximum Sash Load: 60kg

Frame Thickness: 2.0mm



Handle



Top Connector Rod

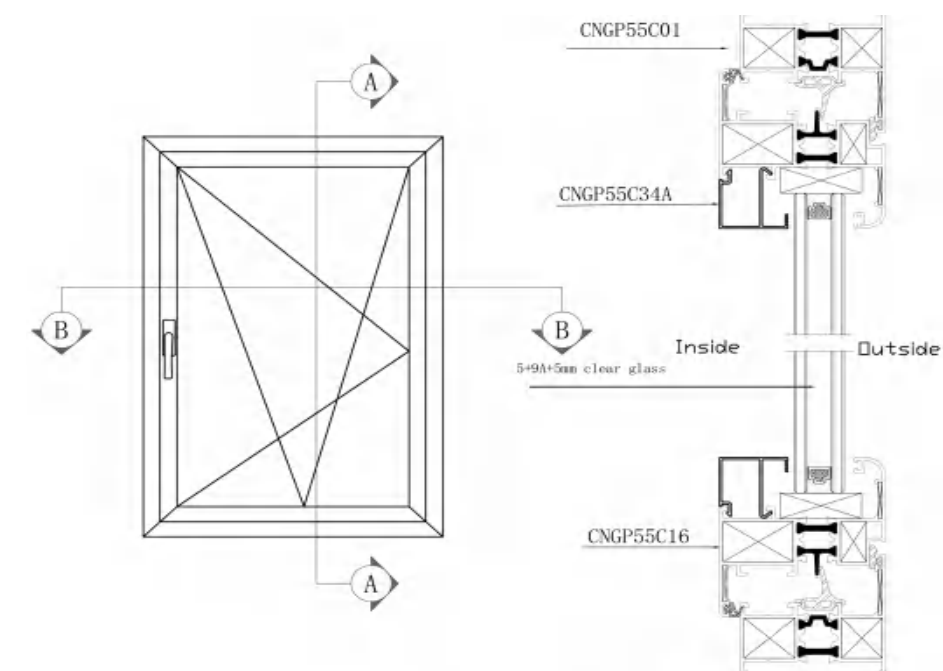


Small Corner Device

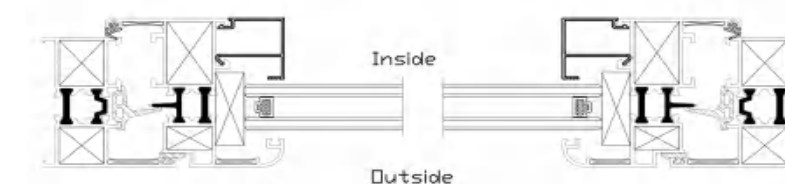


Hinge.

## 55 SERIES ALUMINUM TILT AND TURN WINDOW



HORIZONTAL SECTION DETAIL A-A'



HORIZONTAL SECTION DETAIL B-B'

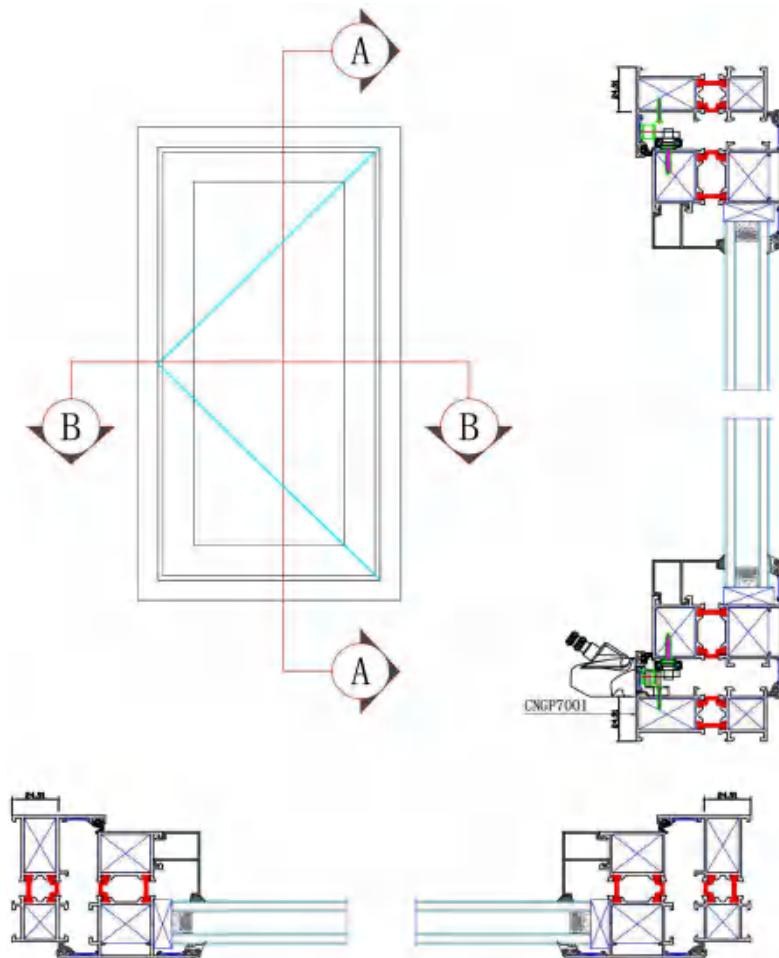




## 70 SERIES ALUMINUM HAND CRANK CASEMENT WINDOW



Hand crank easy operation.



Aluminum and PVC grille at 15mm and 22mm width

## ALUMINUM WINDOW AND DOOR

### 70 SERIES ALUMINUM HAND CRANK CASEMENT WINDOW

#### 70mm Width Aluminum Thermal Break Profile Powder Coated

##### Glass

5mm+12A+5mm double tempered glass

Glass Option: Low E glass, reflective glass, 5+0.76pvb+5mm laminated glass, SGP laminated glass, tinted glass, frosted glass, all IGCC/SGCC certified

##### Energy Performance Ratings

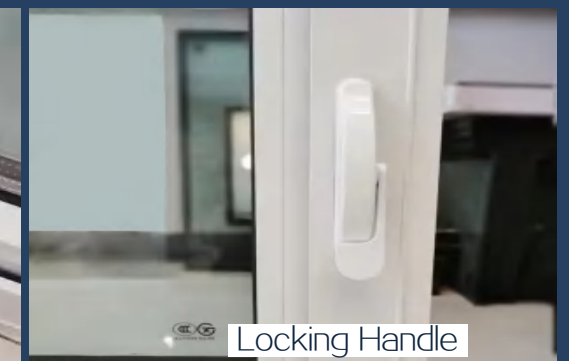
U Factor: 0.3 Solar Heat Gain Coefficient (SHGC): 0.32

Visible Transmittance: 0.51

With NFRC&ENERGY STAR

#### Casement Window With Hand Crank

#### Main Hardware&Accessories



# ALUMINUM WINDOW AND DOOR

## 83 SERIES ALUMINUM DOUBLE HUNG WINDOW

83mm Width Aluminum Thermal Break Profile Powder Coated

### Glass

5mm+12A+5mm double tempered glass

Glass Option: Low E glass, reflective glass, 5+0.76pvb+5mm laminated glass, SGP laminated glass, tinted glass, frosted glass, all IGCC/SGCC certified

### Energy Performance Ratings

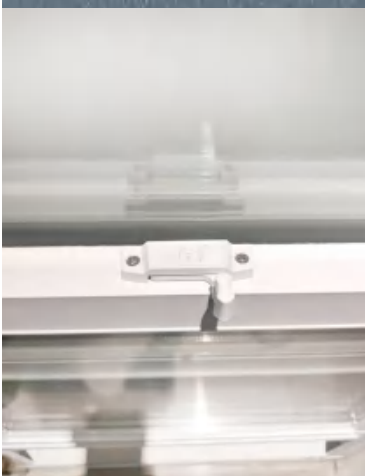
U Factor: 0.3 Solar Heat Gain Coefficient (SHGC): 0.32

Visible Transmittance: 0.51

With NFRC&ENERGY STAR

Fiberglass Screen Outside

### Main Hardware&Accessories



Sash Lock



Tilt Latch

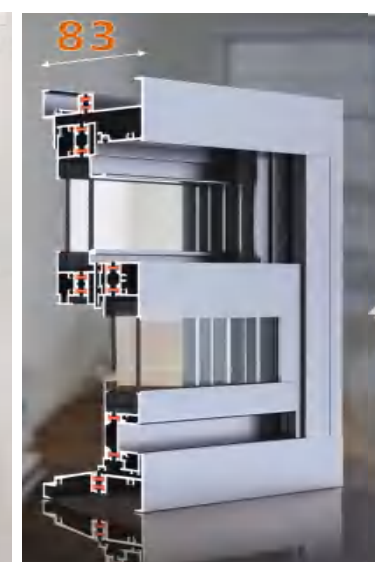
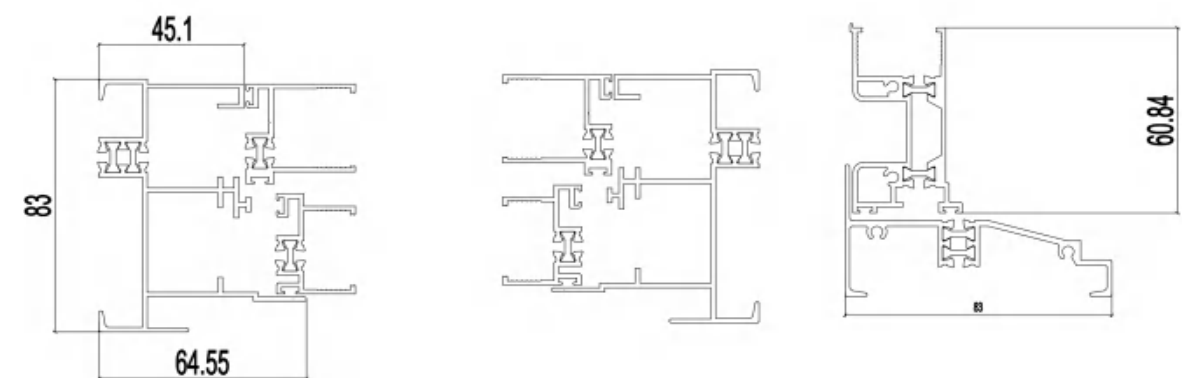
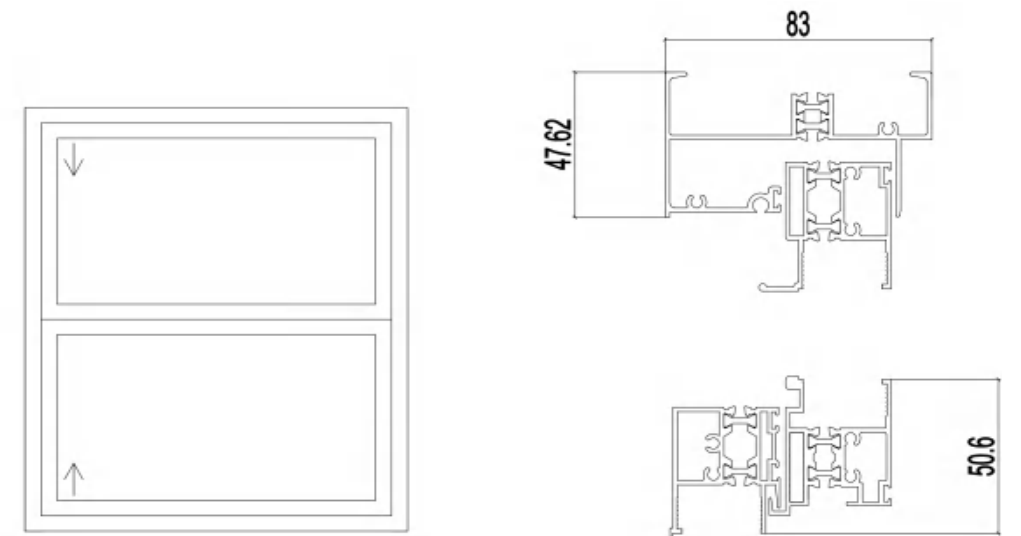


Spring Balance



Pivot Balance

## 83 SERIES ALUMINUM DOUBLE HUNG WINDOW

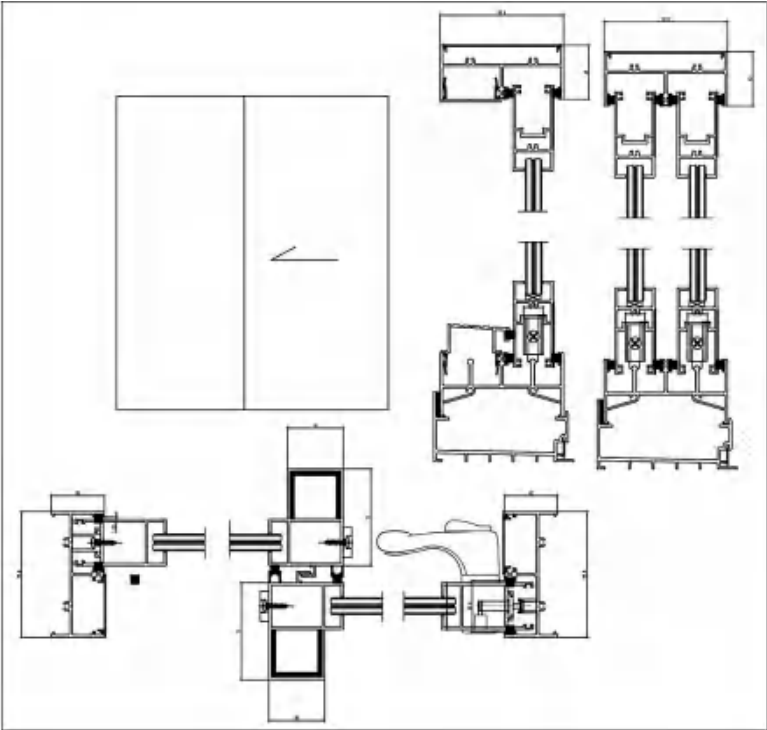




**100** SERIES  
ALUMINUM HURRICANE IMPACT SLIDING DOOR



Triple Sliding Door



\* Double Sliding Door \*

# ALUMINUM WINDOW AND DOOR

**100** SERIES  
ALUMINUM HURRICANE  
IMPACT SLIDING DOOR

**100mm Width Aluminum Thermal Break Profile Powder Coated**  
Wall Thickness: 1.8/2.0mm    Max Height: 3m    Hinge Load Weight: 80kgs

**Glass**  
5mm+9A/12A+5mm double tempered glass with argon filled  
Glass Option: Low E glass, reflective glass, 5+0.76pvb+5mm laminated glass, SGP laminated glass, tinted glass, frosted glass, all IGCC/SGCC certified

**Energy Performance Ratings**  
U Factor: 0.3    Solar Heat Gain Coefficient (SHGC): 0.32  
Visible Transmittance: 0.51  
With NFRC&ENERGY STAR

**Sliding Design Style**

**Hurricane Impact Design**



Handle & Key

Reinforce Mullion

Bottom Sub Frame



# ALUMINUM WINDOW AND DOOR

## 125 SERIES ALUMINUM LIFT AND SLIDING DOOR

### 125mm Width Aluminum Thermal Break Profile Powder Coated

Wall Thickness 1.8/2.0mm    Max Height: 3m    Hinge Load Weight: 80kgs

#### Glass

5mm+18A+5mm double tempered glass with argon filled

Glass Option: Low E glass, reflective glass, 5+0.76pvb+5mm laminated glass, SGP laminated glass, tinted glass, frosted glass, all IGCC/SGCC certified

#### Energy Performance Ratings

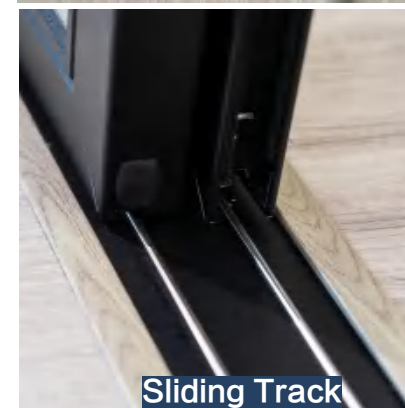
U Factor: 0.3    Solar Heat Gain Coefficient (SHGC): 0.32

Visible Transmittance: 0.51

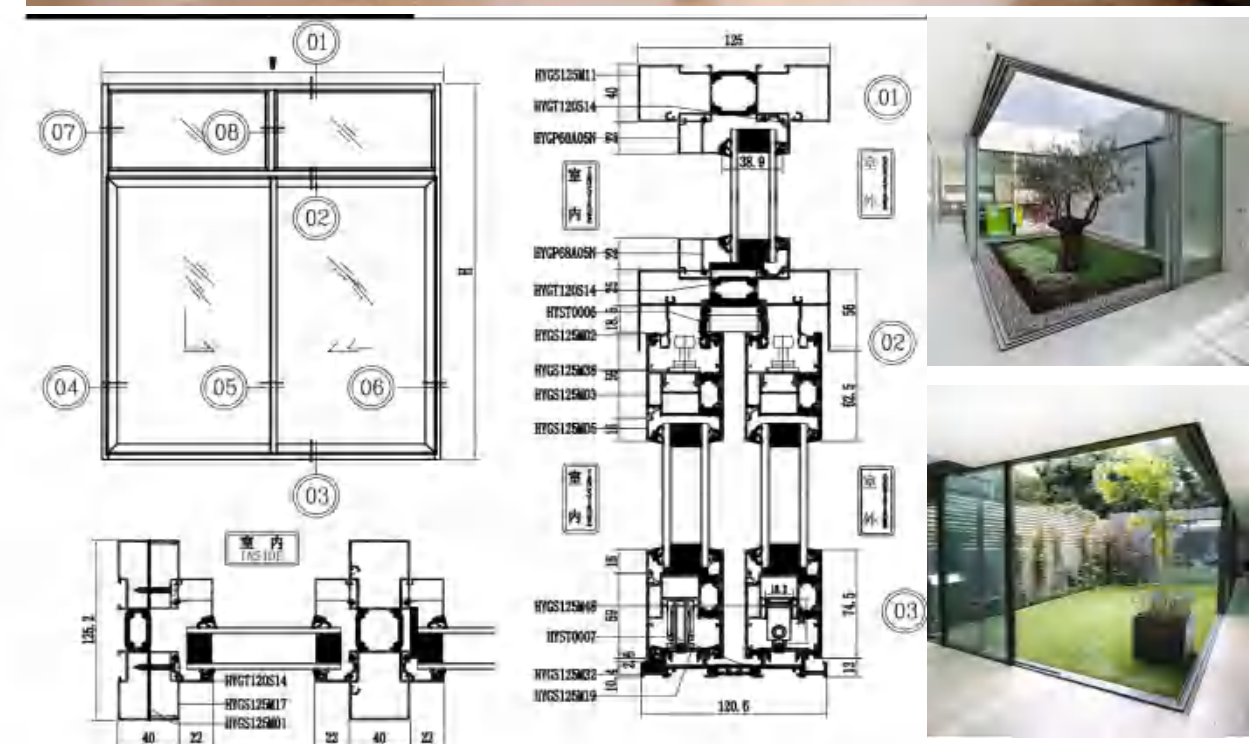
With NFRC&ENERGY STAR

#### Lift And Sliding Design Style

### Lift And Sliding Design



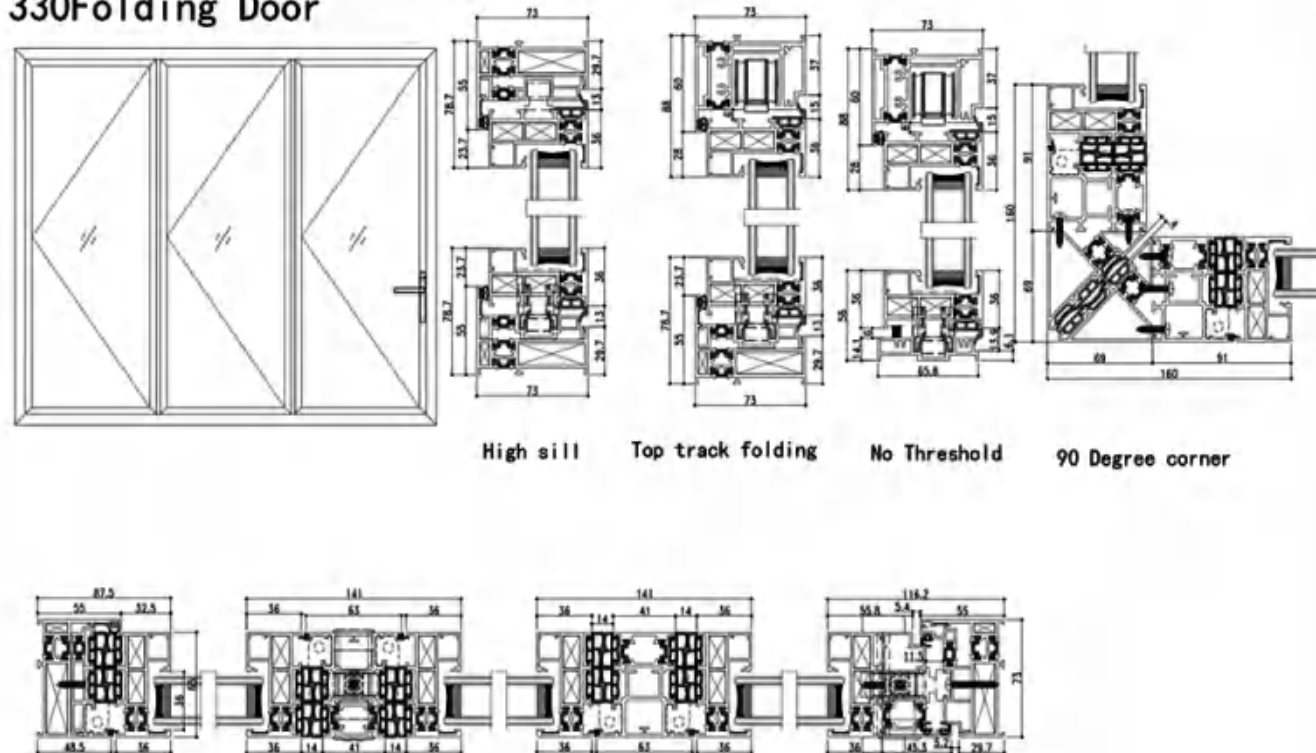
## 125 SERIES ALUMINUM LIFT AND SLIDING DOOR





## 73 SERIES ALUMINUM FOLDING DOOR

### 330 Folding Door



# ALUMINUM WINDOW AND DOOR

## 73 SERIES ALUMINUM FOLDING DOOR

### 73mm Width Aluminum Thermal Break Profile Powder Coated

Wall Thickness: 1.8/2.0mm    Max Height: 3m    Hinge Load Weight: 80kgs

#### Glass

5mm+18A+5mm double tempered glass with argon filled

Glass Option: Low E glass, reflective glass, 5+0.76pvb+5mm laminated glass, SGP laminated glass, tinted glass, frosted glass, all IGCC/SGCC certified

#### ENERGY PERFORMANCE RATINGS

U Factor: 0.3    Solar Heat Gain Coefficient (SHGC): 0.32

Visible Transmittance: 0.51    With NFR ENERGY STAR

#### Folding Design Style



Handle With Lock



Top Track Roller



Bottom Track Roller



Hinge



# ALUMINUM WINDOW AND DOOR

## 68 SERIES ALUMINUM CASEMENT DOOR

68mm Width Aluminum Thermal Break Profile Powder Coated

Wall Thickness 1.8/2.0mm Max Height: 3m Hinge Load Weight: 80kgs

### Glass

5mm+12A+5mm double tempered glass with argon filled

Glass Option: Low E glass, reflective glass, 5+0.76pVB+5mm laminated glass, SGP laminated glass, tinted glass, frosted glass, all IGCC/SGCC certified

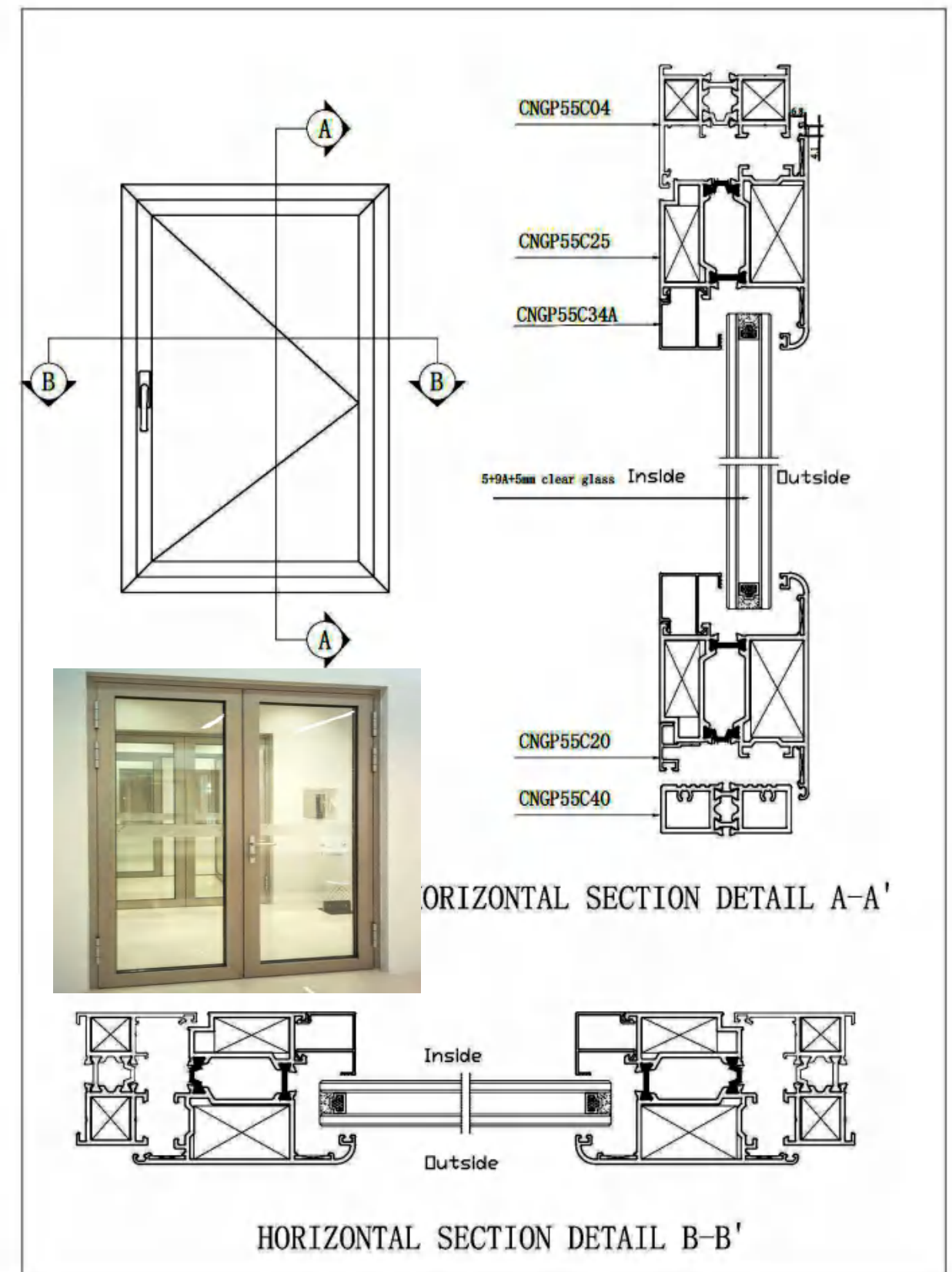
### Energy Performance Ratings

U Factor: 0.3 Solar Heat Gain Coefficient (SHGC): 0.32 Visible

Transmittance: 0.51 With NFRC ENERGY STAR

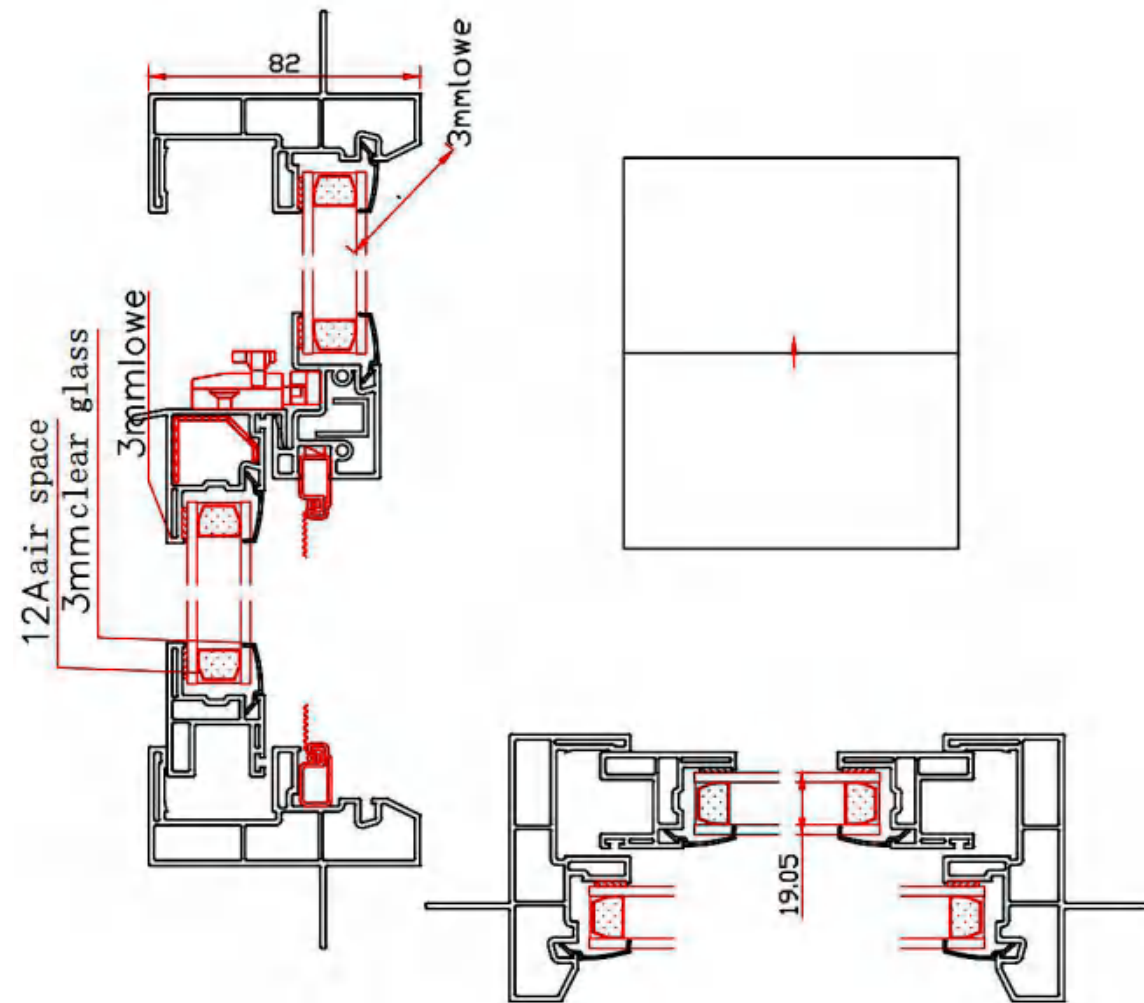


## 68 SERIES ALUMINUM CASEMENT DOOR





## 82 SERIES UPVC SINGLE HUNG WINDOW



## UPVC WINDOW AND DOOR

### 82 SERIES UPVC SINGLE HUNG WINDOW

Upvc frame is 82mm with nail fin design.

#### Glass

3mm low e+12A+3mm double tempered glass with 15mm grille

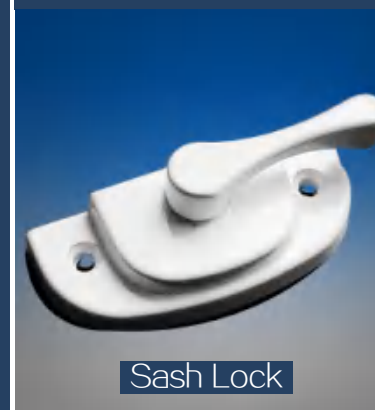
#### Energy Performance Ratings

U Factor: 0.3      Solar Heat Gain Coefficient (SHGC): 0.21

Visible Transmittance: 0.41

Air Leakage: 0.15      With NFRC&ENERGY STAR

With removable fiberglass screen.



Sash Lock



Keeper



Non-tilt  
Window Balance



Sash Cam



# UPVC WINDOW AND DOOR

## 82 SERIES UPVC DOUBLE HUNG WITH TILT WINDOW

Upvc frame is 82mm with nail fin design.

### Glass

3mm low e+12A+3mm double tempered glass

### Energy Performance Ratings

U Factor: 0.3     Solar Heat Gain Coefficient (SHGC): 0.21

Visible Transmittance: 0.41

Air Leakage:0.15

With NFRC&ENERGY STAR

### Grills

Aluminum and PVC grilles, in hollow glass .

With removable fiberglass screen.

### Main Hardware&Accessories



Balance Shoe



Sash Lock



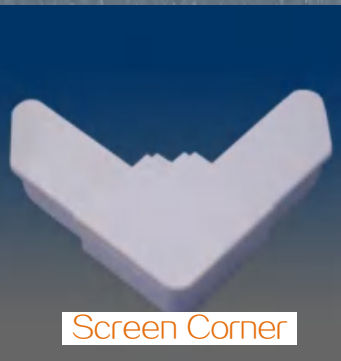
Keeper



Tilt Latch



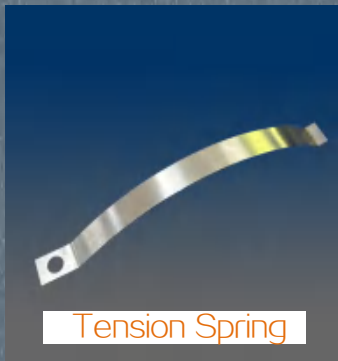
Pivot Bar



Screen Corner

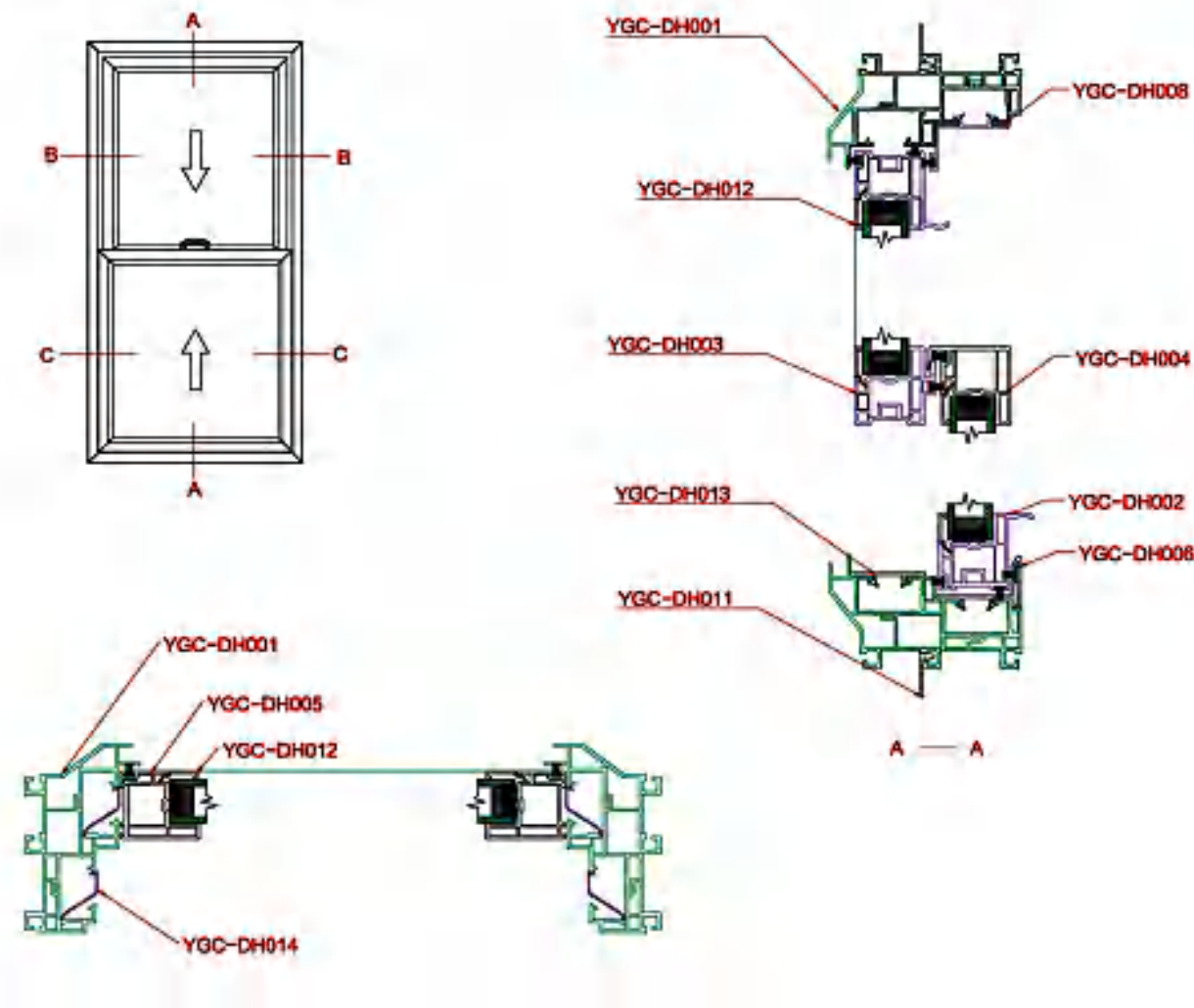


Screen Pull



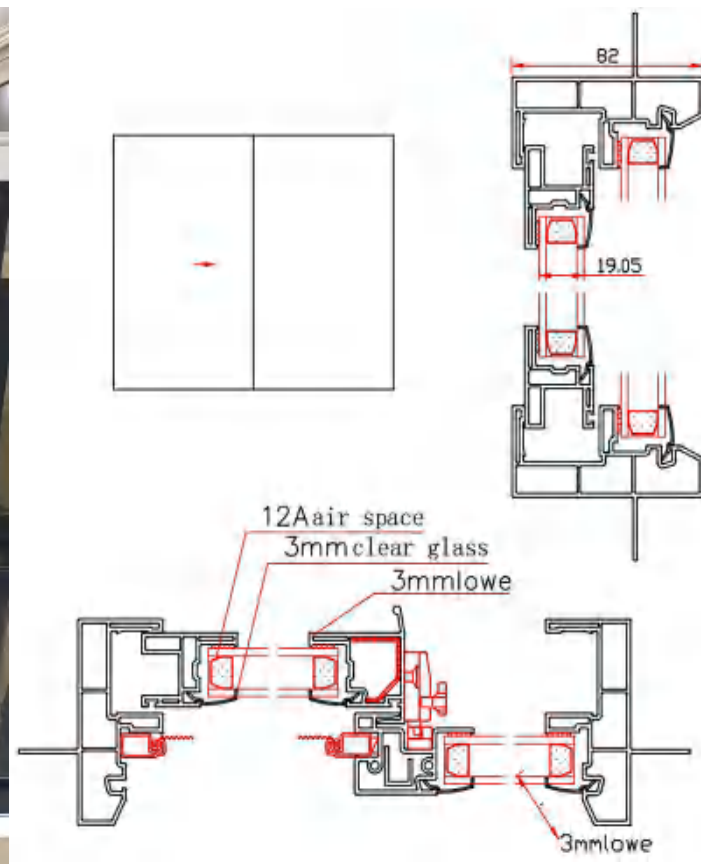
Tension Spring

## 82 SERIES UPVC DOUBLE HUNG WITH TILT WINDOW





## 82 SERIES UPVC SLIDING AND FIXED WINDOW



## UPVC WINDOW AND DOOR

### 82 SERIES UPVC SLIDING AND FIXED WINDOW

Upvc frame is 82mm with nail fin design.

#### Glass

3mm low e+12A+3mm double tempered glass with 15mm grille

#### Energy Performance Ratings

U Factor: 0.3

Solar Heat Gain Coefficient (SHGC): 0.21

Visible Transmittance: 0.41 Air Leakage: 0.15

With NFRC&ENERGY STAR

With removable fiberglass screen.

### Main Hardware&Accessories

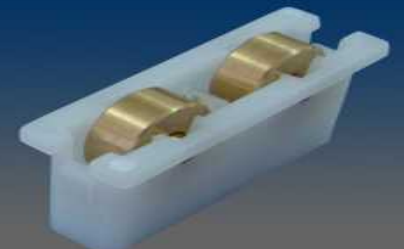
Sash Lock



Keeper



Sash Roller



Weep Hole Cover



Screen Corner



Screen Pull



Tension Spring





# UPVC WINDOW AND DOOR

## 72 SERIES UPVC HAND CRANK CASEMENT WINDOW

Upvc frame is 72mm with nail fin design.

### Glass

3mm low e+12A+3mm+12A+3mm triple tempered glass with 15mm grille

### Energy Performance Ratings

U Factor: 0.3

Solar Heat Gain Coefficient (SHGC): 0.21

Visible Transmittance: 0.41    Air Leakage:0.15

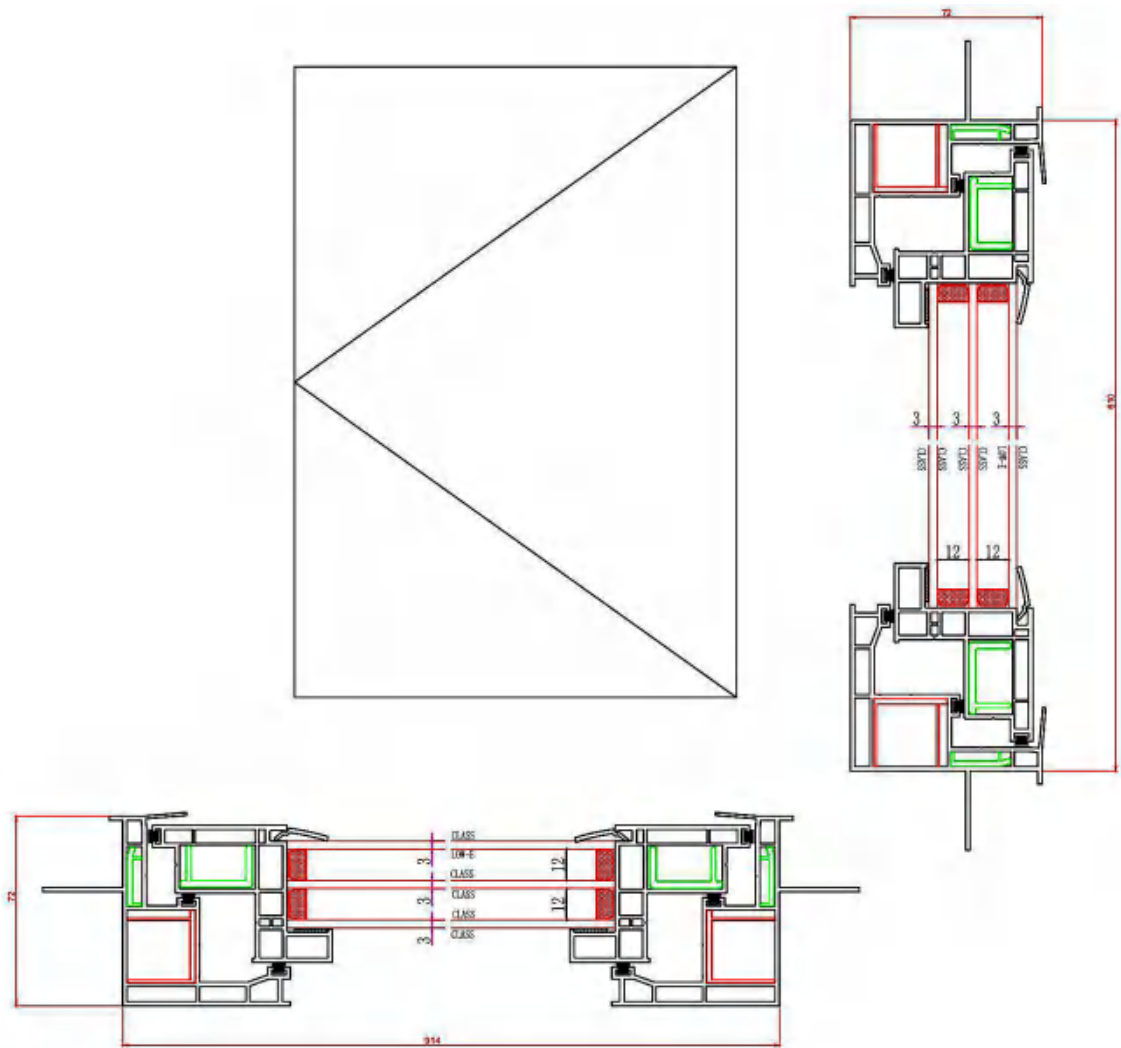
With NFRC&ENERGY STAR

With removable fiberglass screen.

### Window Details

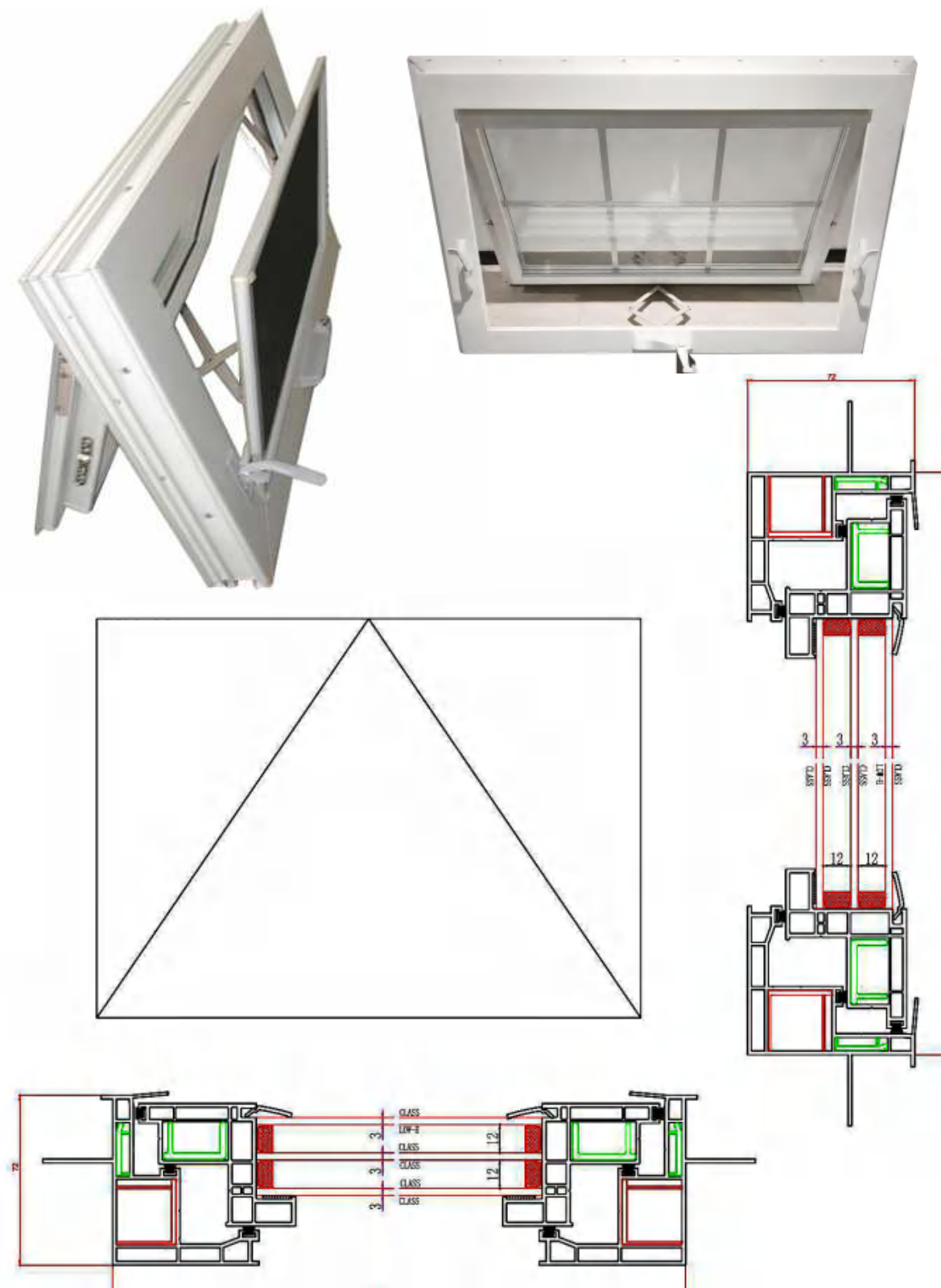


## 72 SERIES UPVC HAND CRANK CASEMENT WINDOW





# 72 SERIES UPVC HAND CRANK AWNING WINDOW



# UPVC WINDOW AND DOOR

## 72 SERIES UPVC HAND CRANK AWNING WINDOW

Upvc frame is 72mm with nail fin design.

### Glass

3mm low e+12A+3mm+12A+3mm triple tempered glass with 15mm grille

### Energy Performance Ratings

U Factor: 0.3

Solar Heat Gain Coefficient (SHGC): 0.21

Visible Transmittance: 0.41 Air Leakage:0.15

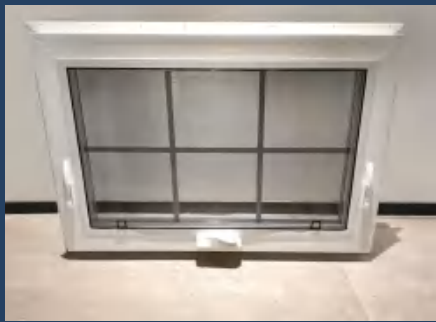
With NFRC&ENERGY STAR

With removable fiberglass screen.

## Main Hardware&Accessories



Operator



Track



Folding Handle-Operator Cover



Adjustable Hinge



Locking Handle



# UPVC WINDOW AND DOOR

## 60 SERIES UPVC CASEMENT WINDOW

Upvc frame is 60mm with nail fin design.

### Glass

5mm low e+9A/12A+5mm

### Energy Performance Ratings

U Factor: 0.3

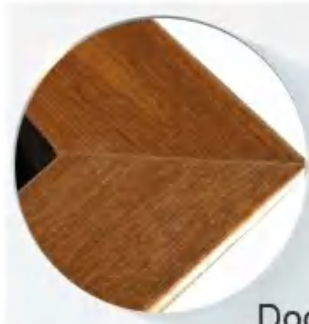
Solar Heat Gain Coefficient (SHGC): 0.21

Visible Transmittance: 0.41 Air Leakage:0.15 Wit

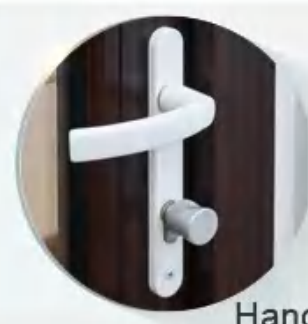
h NFRC&ENERGY STAR

With removable fiberglass screen.

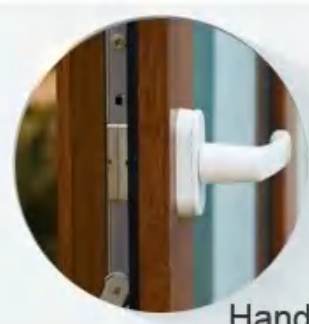
### Main Hardware&Accessories



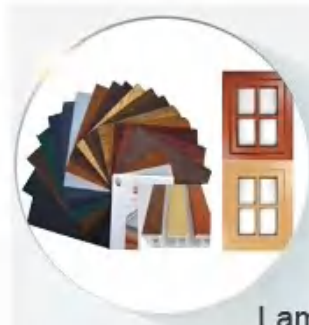
Door  
Corner



Handle  
& Lock



Handle



Laminated  
Colour

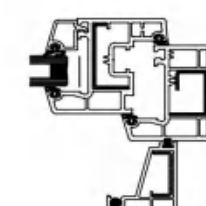
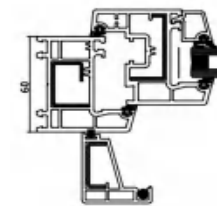
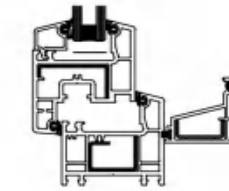
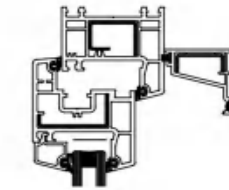
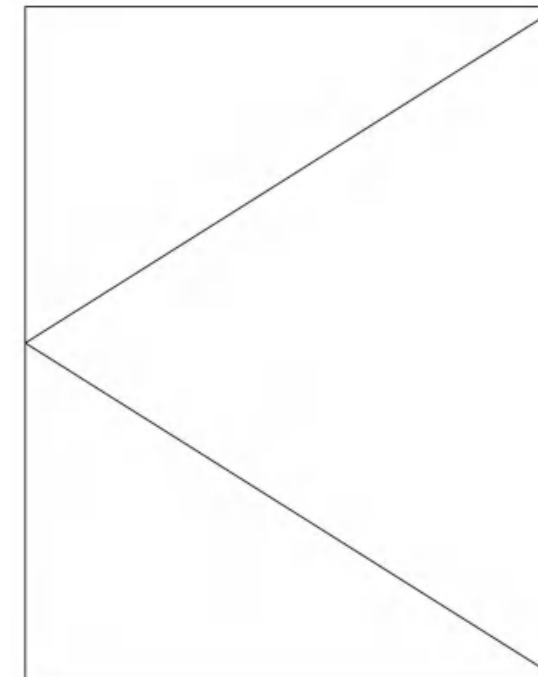


Hinge



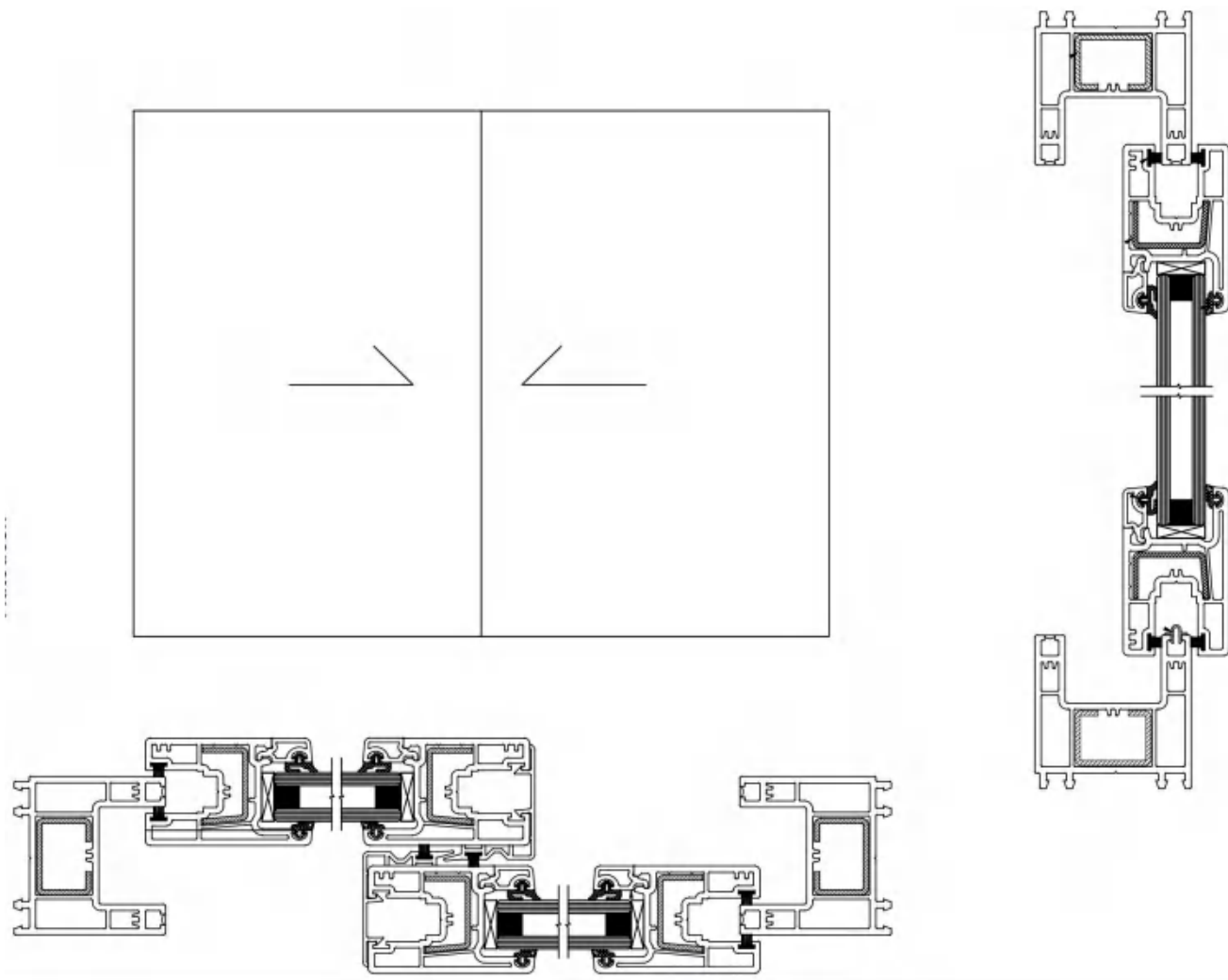
Triple  
Glass

## 60 SERIES UPVC CASEMENT WINDOW





# 60 SERIES UPVC SLIDING WINDOW



# UPVC WINDOW AND DOOR

## 60 SERIES UPVC SLIDING WINDOW

Upvc frame is 60mm with nail fin design.

### Glass

5mm low e+9A+5mm Tempered clear glass

### Energy Performance Ratings

U Factor: 0.3

Solar Heat Gain Coefficient (SHGC): 0.21

Visible Transmittance: 0.41     Air Leakage:0.15

With NFRC&ENERGY STAR

With removable fiberglass screen.

## Main Hardware&Accessories





# UPVC WINDOW AND DOOR

## 60 SERIES UPVC CASEMENT DOOR

Upvc frame is 60mm with nail fin design.

### Glass

5mm low e+9A/12A+5mm

### Energy Performance Ratings

U Factor: 0.3

Solar Heat Gain Coefficient (SHGC): 0.21

Visible Transmittance: 0.41 Air Leakage:0.15

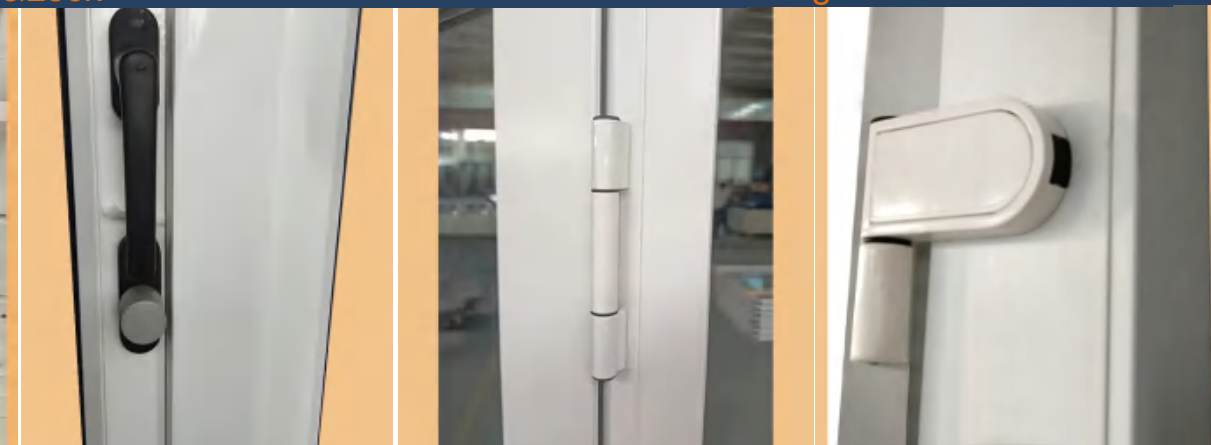
With NFRC&ENERGY STAR

With removable fiberglass screen.

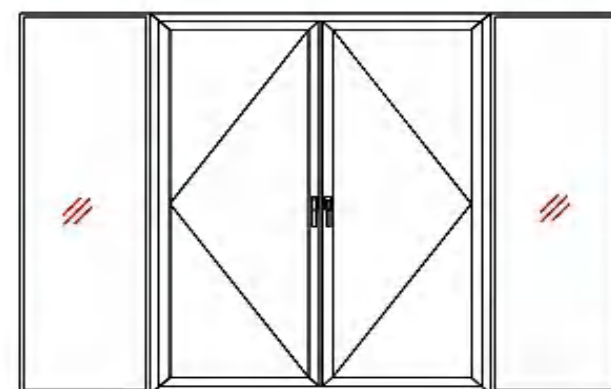
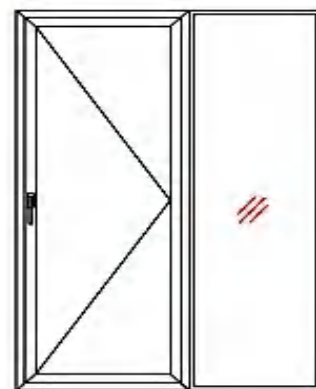
### Handle&Lock



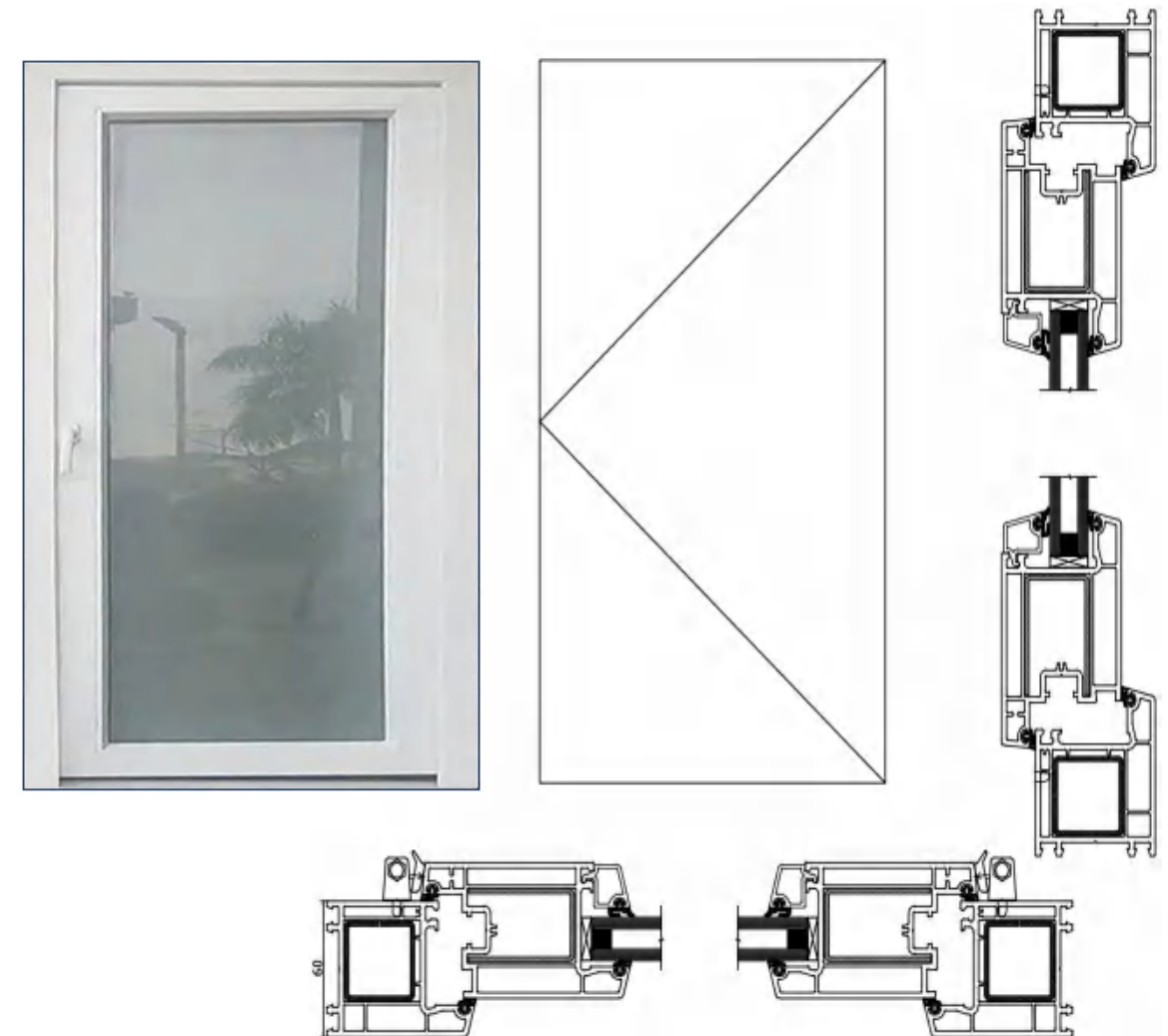
### Hinge



### Opening Styles

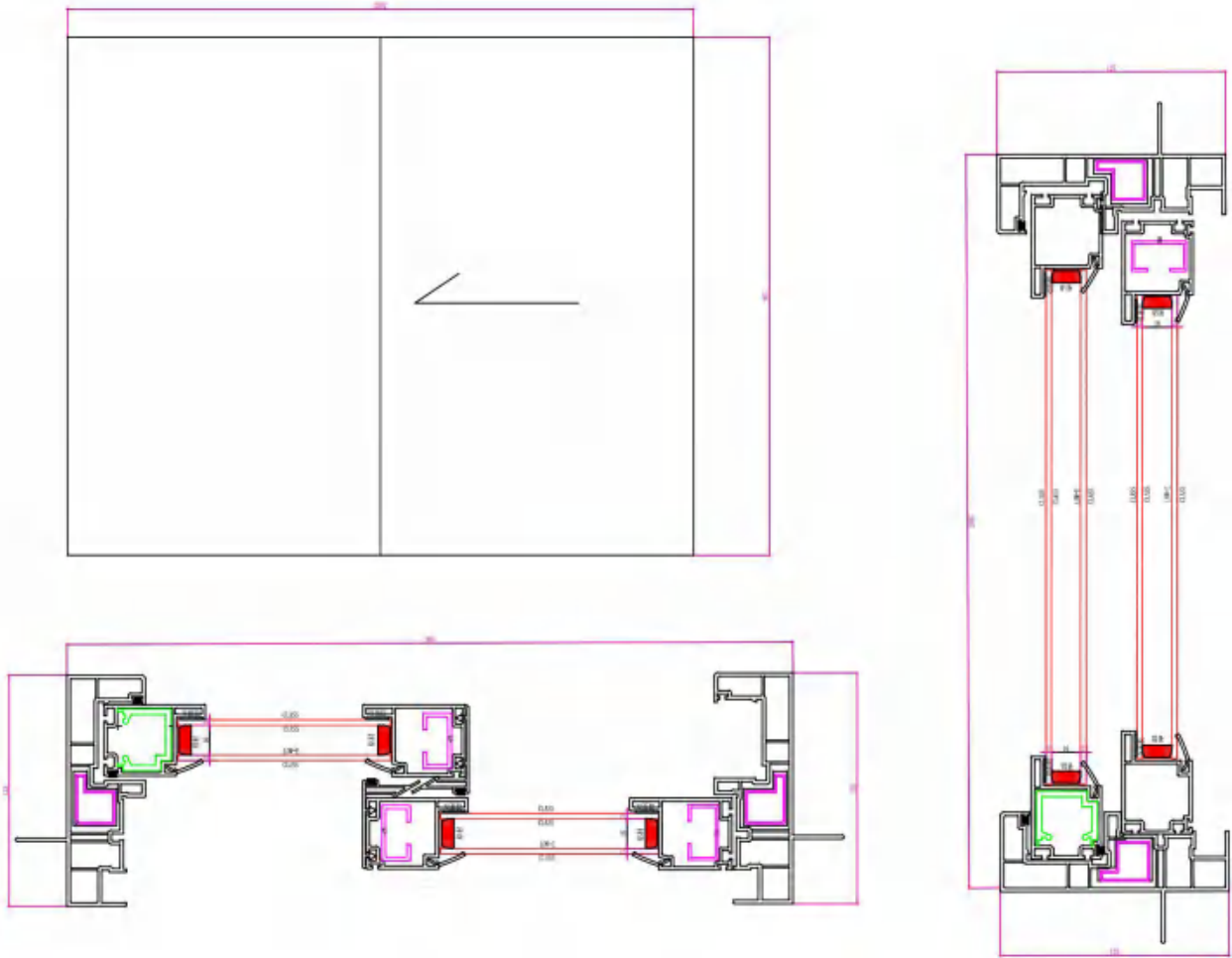


## 60 SERIES UPVC CASEMENT DOOR





# 125 SERIES UPVC SLIDING DOOR



# UPVC WINDOW AND DOOR

## 125 SERIES UPVC SLIDING DOOR

Upvc frame is 125mm with nail fin design.

Glass

3mm low e+12A+3mm double tempered glass

Energy Performance Ratings

U Factor: 0.3

Solar Heat Gain Coefficient (SHGC): 0.21

Visible Transmittance: 0.41    Air Leakage:0.15

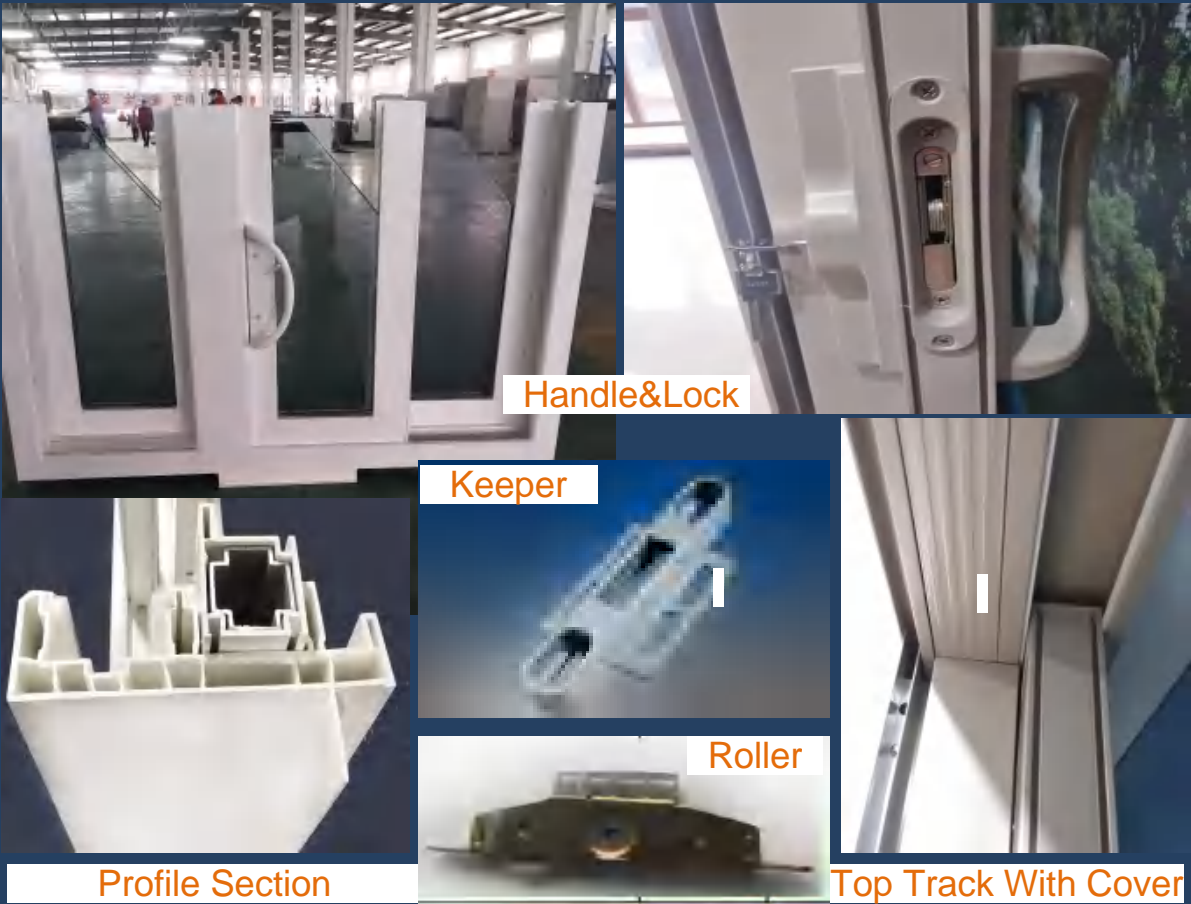
With NFRC&ENERGY STAR

More Design

With removble fiberglass screen.

With aluminum einforcement inside.

Main Hardware And Accessories





# ALUMINUM CURTAIN WALL

## ALUMINUM UNITIZED CURTAIN WALL

### Aluminum unitized curtain wall

#### Profile Type

6063-T5 Aluminum Profile, Thermal Break & No Thermal Break Profile.

#### Energy Performance Ratings

U Factor: 0.3

Solar Heat Gain Coefficient (SHGC): 0.21

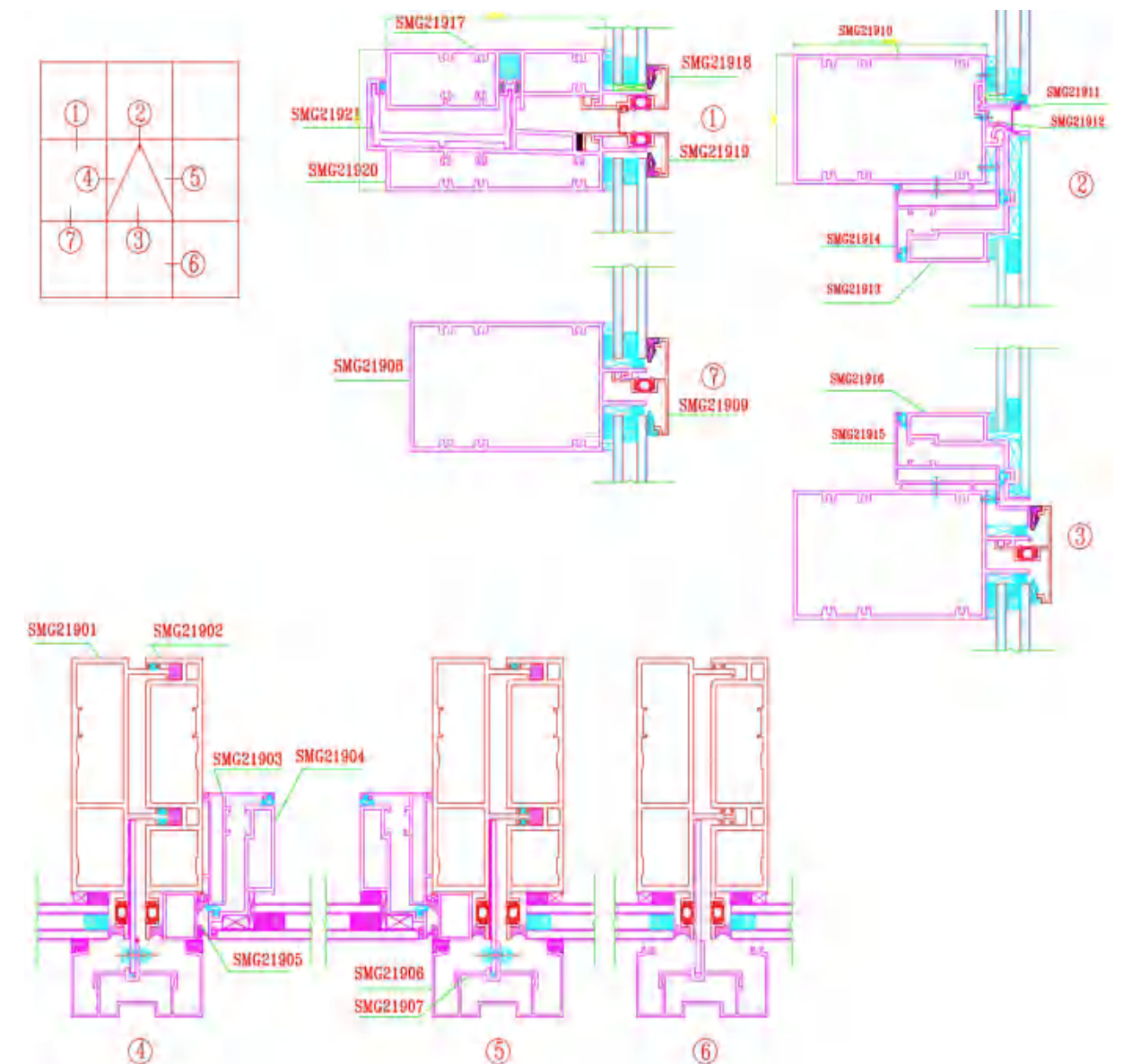
Visible Transmittance: 0.41 Air Leakage: 0.15

With NFRC&ENERGY STAR

**Column Width:** 50mm, 60mm, 65mm, 100mm, 120mm, etc.

**Profile Finish:** Powder Coating, PVDF Coating, Anodizing, Electrophoresis, Heat Transfer Printing, etc.

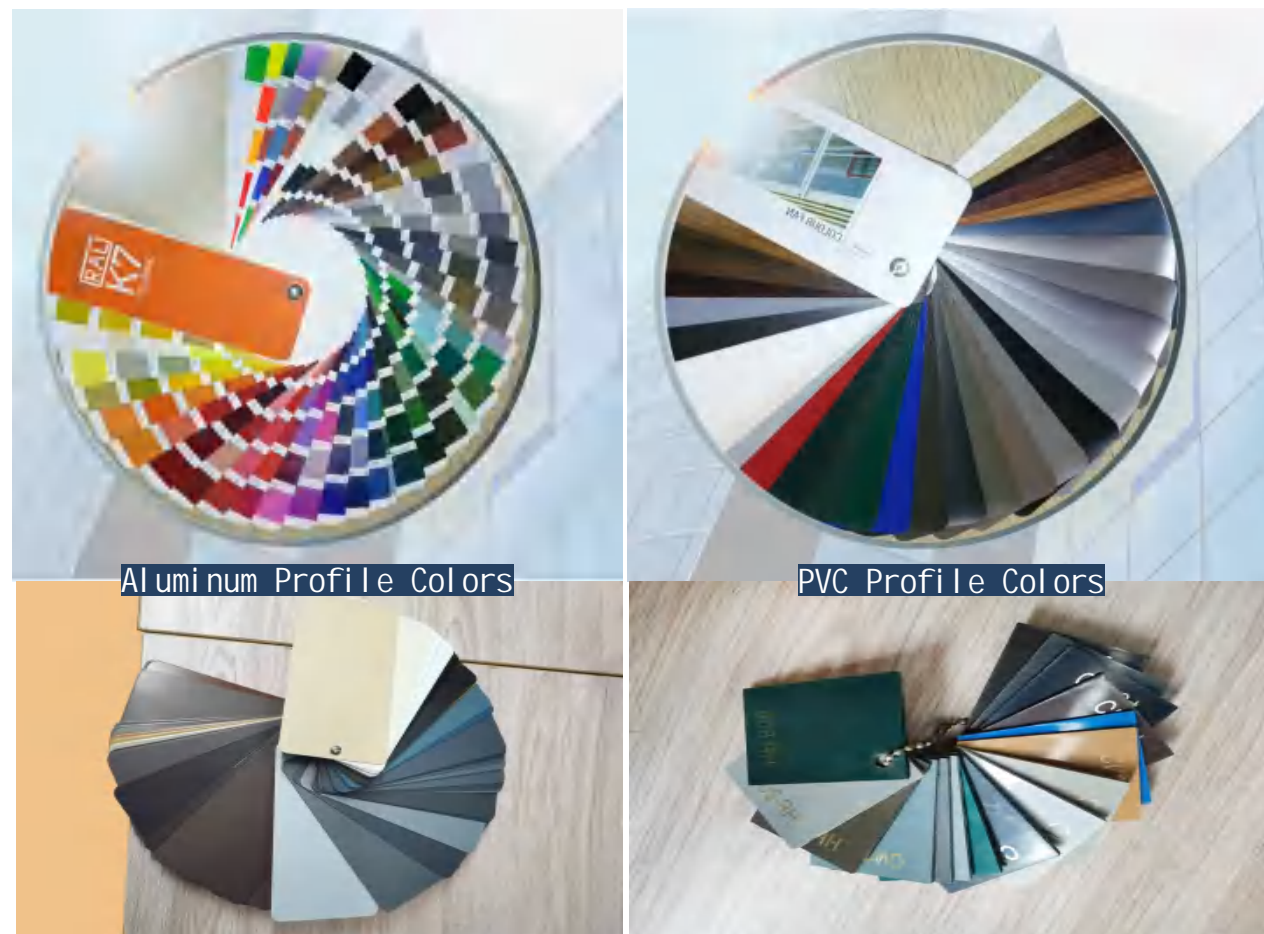
### UNITIZED CURTAIN WALL





# \* MATERIALS \*

## PROFILE



Aluminum Profile Colors

PVC Profile Colors

## WINDOW SCREEN



Fiberglass Screen

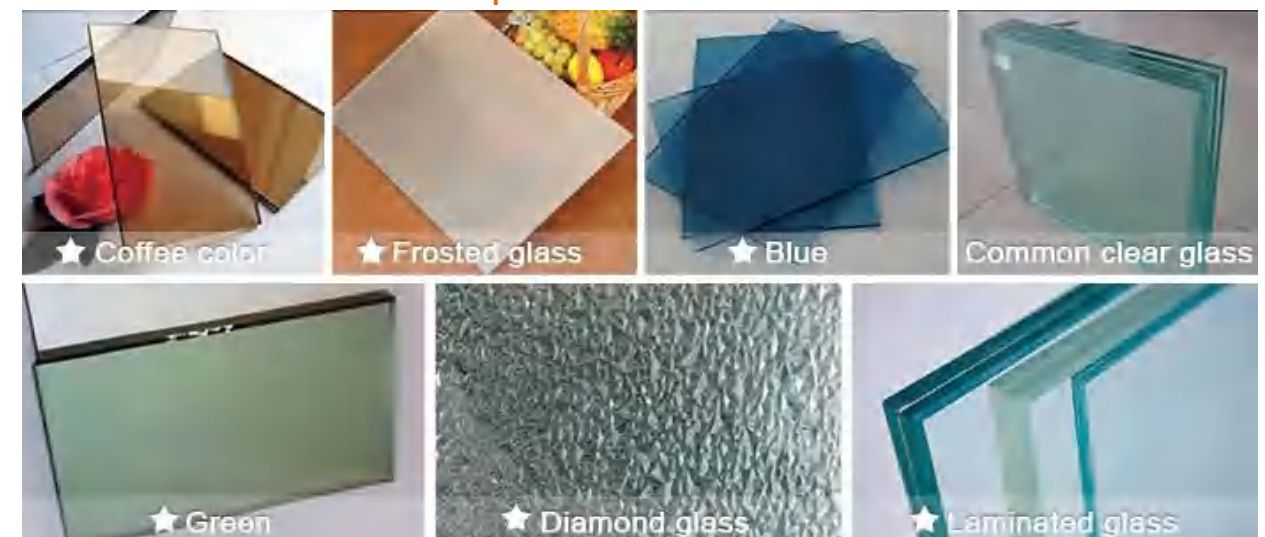
Stainless Steel Mesh

Aluminum Mesh

Security Mesh

## GLASS

### Options For Glass



★ Coffee color

★ Frosted glass

★ Blue

Common clear glass

★ Green

★ Diamond glass

★ Laminated glass

### Glass Layers



### Glass Grille



grille inside/outside glass



# \* PACKAGE \*

## PACKAGE



▲ Packing



▲ Metal Frame Packing



▲ Wooden Frame Packing



▲ Loading Container

**K**  
**KDSBUILDING**

**K**  
**KDSBUILDING**

XIAMEN KDSBUILDING MATERIAL CO., LTD  
www.kdsbuilding.com  
MP,Whatsapp: 0086-13459252158  
E-mail: ken@kdsbuilding.com  
Wechat: 27288590