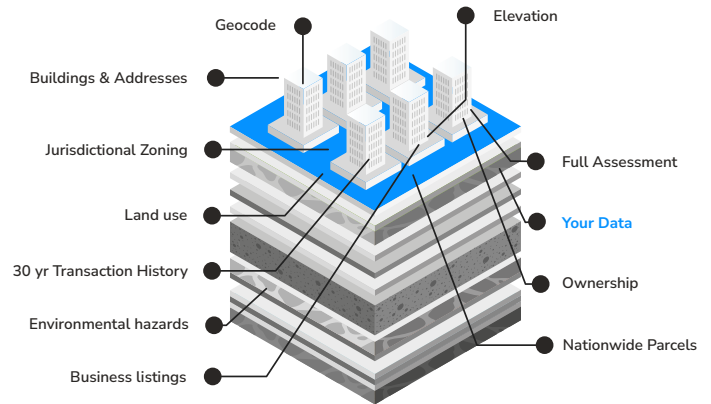


LightBox Data:

We manage data complexity to bring you simplicity

LightBox SmartFabric standardizes and integrates over 10,000 data sources into a single deliverable, encompassing nationwide parcel boundaries, assessment records, building footprints, granular addresses, geocodes and more. This data is connected by the LightBox Identifier (LID), ensuring consistency and reliability across all applications.

"I can confidently say that LightBox is the most comprehensive and complete property dataset out there. It is strong in every category, from its GIS layers, parcel layers, assessment data, property ownership data, and more"
Carson Schafer, Director and Founder at Landpal



Key Features and Benefits:

Connected Data: Managing the complexity of more than 10,000 disparate data sources, LightBox aggregates and standardizes unformatted data to make it actionable to the end-user. Each dataset is connected through the LightBox ID (LID), enabling intricate relationships between data objects. These pre-built connections are designed for immediate data operationalization.

Nationwide North American Data Assets: LightBox boasts comprehensive data assets spanning the entire US, including its territories, as well as Canada. Because LightBox is both an aggregator and manufacturer of data, it ensures unparalleled data quality, accuracy, and depth, providing users with a reliable and exhaustive resource for their data needs.

Currency and Completeness: Current and complete location data is crucial for informed decision-making across industries. LightBox ensures the most accurate available information on property boundaries, location data and zoning regulations. This enables organizations to optimize operations, enhance customer experiences, and mitigate risks, driving efficiency, innovation, and strategic growth.

Flexible Business Terms with Emphasis on Partnership: LightBox leverages ownership and broad rights to SmartFabric data, enabling the customization of solutions to meet specific client needs. By maintaining direct control over data acquisition, processing, and distribution, LightBox ensures seamless alignment with business objectives and swift adaptation to market changes. This flexibility fosters a collaborative partnership, enhancing client value and reinforcing a commitment to mutual growth and success.

Spend more time analyzing your data, instead of organizing it.

Nationwide Datasets Including:

- Parcel geometries (100% coverage)
- Building footprints (100% coverage)
- Addresses and sub-addresses (100% coverage)
- County recorder and assessor
- Jurisdictional zoning
- Demographics
- Points of interest (all registered businesses)
- Hazards: FEMA flood, wetlands and more
- School ratings
- Builder sites (top 300 residential home builders)
- **And much more!**

Access LightBox data tailored to your needs

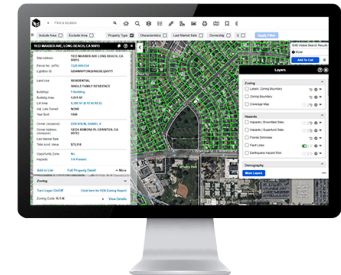


Bulk Delivery / Data Feed

LightBox offers large-scale datasets delivered directly to you in formats that suit your needs, such as CSV or file geodatabase. This method is ideal for organizations requiring extensive data for deep analysis or integration into internal databases, ensuring you have the comprehensive information necessary for strategic planning and research.

SaaS Application: LightBox VisionSM

LightBox VisionSM is a user-friendly SaaS application offering immediate access to powerful property data and analytics tools. Its intuitive interface and robust capabilities enable users to explore, analyze, and visualize property data easily, driving actionable insights and business outcomes.

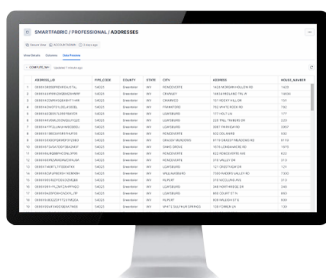


API

LightBox APIs provide the location intelligence to power your digital workflows. Access our full data stack via powerful, cloud-based RESTful APIs, including spatial boundaries, comprehensive property characteristics, zoning, and geocoding, and more. Designed for ease of use, LightBox APIs allow developers to integrate and test efficiently in both sandbox and live environments.

Feature Service

LightBox's feature service delivers geospatial data through standardized services compatible with Esri's GIS platforms, including ArcGIS Pro and ArcGIS Online. This significantly reduces the Extract, Transform, Load (ETL) workload, allowing customers to bypass time-consuming data preparation tasks and save on storage costs. The service enables visualization and analysis of property data on maps, facilitating spatial analysis and helping uncover patterns and insights in the data.



Snowflake

Leveraging Snowflake's cloud data platform, LightBox data can be seamlessly accessed and integrated into your data ecosystem. This scalable solution allows you to perform complex queries and analyses on massive datasets without extensive infrastructure, empowering data-driven decision-making across your organization. By eliminating the need for tedious ETL processes involved in bulk data deliveries, you can achieve substantial cost savings and reduce storage requirements.

CONTACT US

lightboxre.com