

www.shinwoong-usa.com



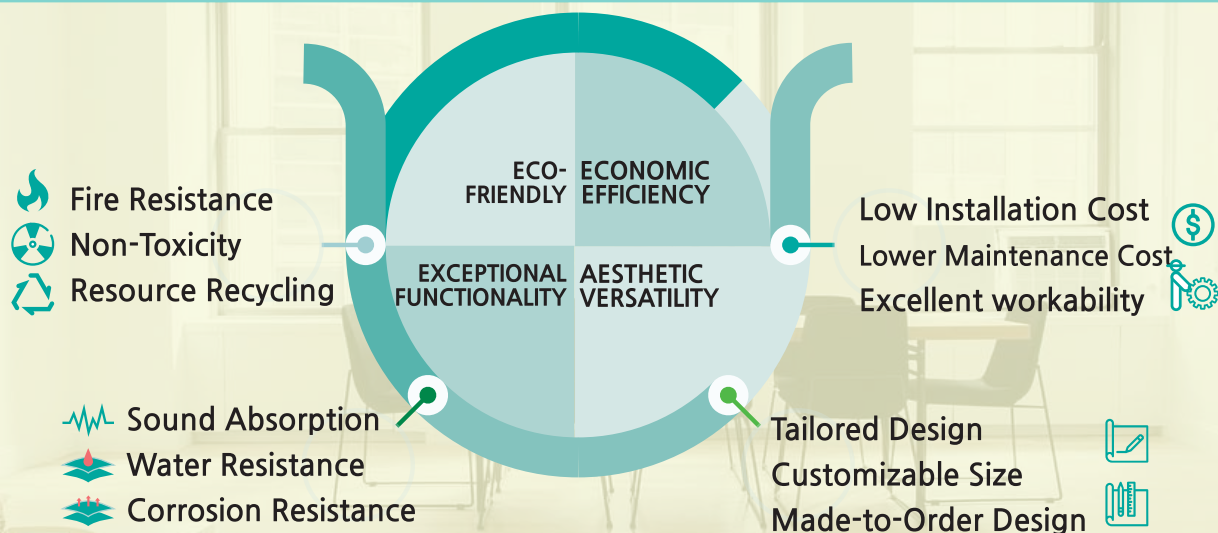
Where Safety Meets Sustainability

"Safer Buildings, Healthier Lives, A Greener Future."



SHINWOONG USA

Product Features



Test Results / Non-combustibility Test (Tested by Korea Test & Research Institute)

SHINWOONG-USA

Direct transfer printing technology (semipermanent product)
No toxic gas emitted in case of fire
 Eco-friendly product with **no toxic substances**
 Registered PCT patents in South Korea



Company A and B

Adhesives are used to attach the design to the board
Toxic gases are generated during a fire, increasing the risk to human life
 Detection of **various harmful substances**
 Over time, **the design film detaches** from the board



TEST ITEM	SHINWOONG_USA	Company A	Company B	Unit
Volatile Organic Compounds	0 (none)	0.30	0.31	g/L
Radon Emissions (7 days)	16.5	198	168	Bg/m3
Tensile Strength	7.0	4.0	5.0	Mpa
Density	1.3	0.7	0.8	Gm/L
Percussion	5.7	2.0	3.0	Ki/m2
Non-Combustibility	Complete Non-Combustible	Semi-Non-Combustible	Semi-Non-Combustible	K

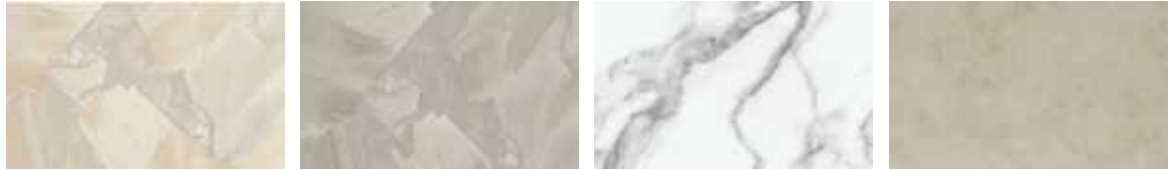
Pattern Collection

The patterns below are samples, with more styles and custom designs available upon request

Wood



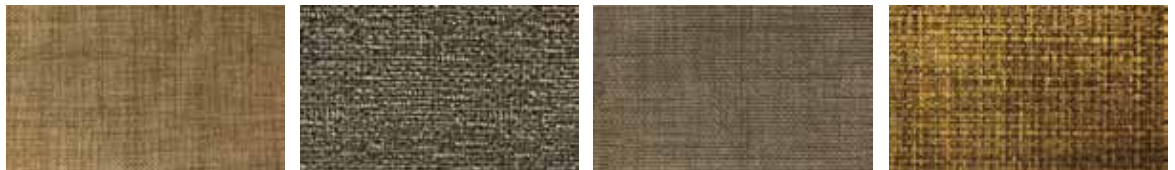
Marble



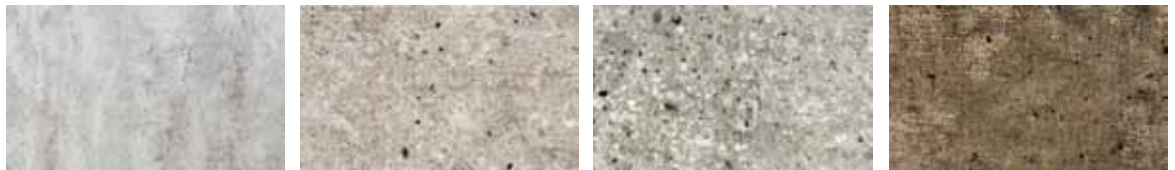
Graphics



Fabric



Stone



Metal



Versatile Safety Board Applications

Perfect for commercial, residential, and public facilities, we offer versatile solutions for interior and exterior wall design



White Mable



Sand Stone



White Wood
/ Ocher Wood



Beige Mable
& Green Marble



Ocher Wood



Beige Mable



Beige Wood



White & Green
(Wet Construction)

SHIN WOONG Safety Board

"Our mission is to create safer, healthier living environments where people are free from concerns about safety and well-being —empowered by our innovative, environmentally conscious building solutions."



“Protecting People. Preserving the Planet”

53 Red Horse Way, Greer, SC 29651

Office : +1 864 416 1497

e-mail : contact@shinwoong-usa.com

www.shinwoong-usa.com

Made in Korea

