



*Featuring **StructuLink™** Technology

**Nature features genius
engineering using wood
cemented in creative
ways**



**Much like our
StructuLinkTM Technology.**

***Solid
walls,
solid
savings.***



StructuLink™ Steps Saved



1. Install walls.

Conventional Method

1. Wood Frame
2. Fiberglass insulation
3. Structural sheeting
4. Waterproofing
5. Drywall

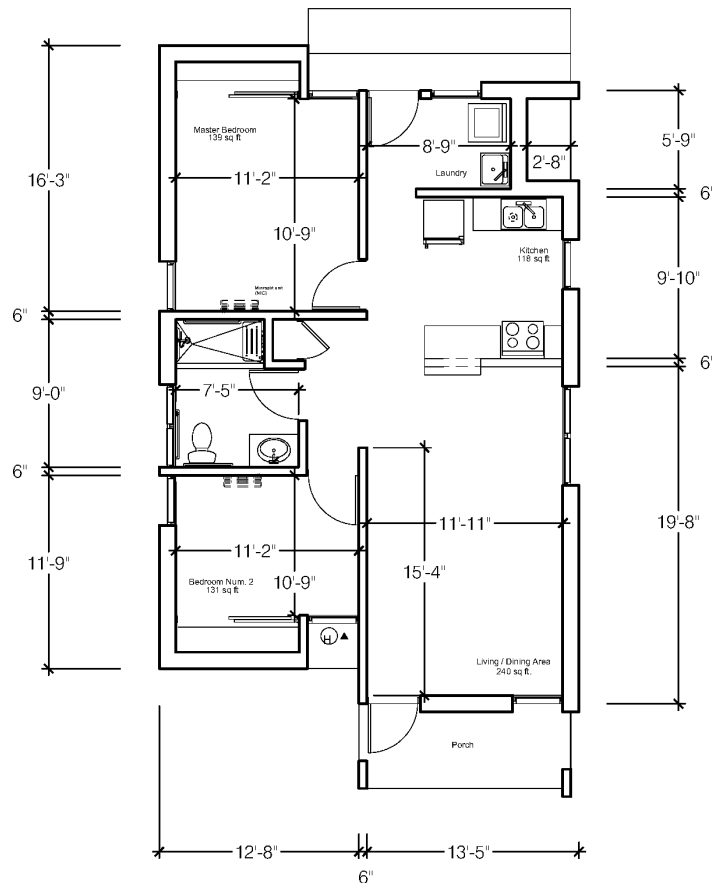
Modern or traditional. You decide.











1 SINGLE FLOOR PLAN
NTS

Structulink™ Technology

DISCLOSURE OF PROPRIETARY & CONFIDENTIAL INFORMATION
This drawing and the information contained herein is the sole property of Troy Acoustics Corporation and it is licensed and protected under U.S. Patent 8,601,273. Any use or reproduction in part or as a whole is strictly prohibited without the prior, written permission of Troy Acoustics Corporation. Contact 800.987.3306 for more information.

**TROY
ACOUSTICS
CORPORATION**



SERIOUS ACOUSTIC SOLUTIONS
www.troyacoustics.com
2580 Sidney Lanier Drive
Brunswick, GA 31525
Tel: (818) 376-8490
(800) 987-3306

HOUSING PRELIMINARY
DESIGN DRAWINGS

REVISIONS:

DRAWN BY: TCB

DATE: 04-10-24

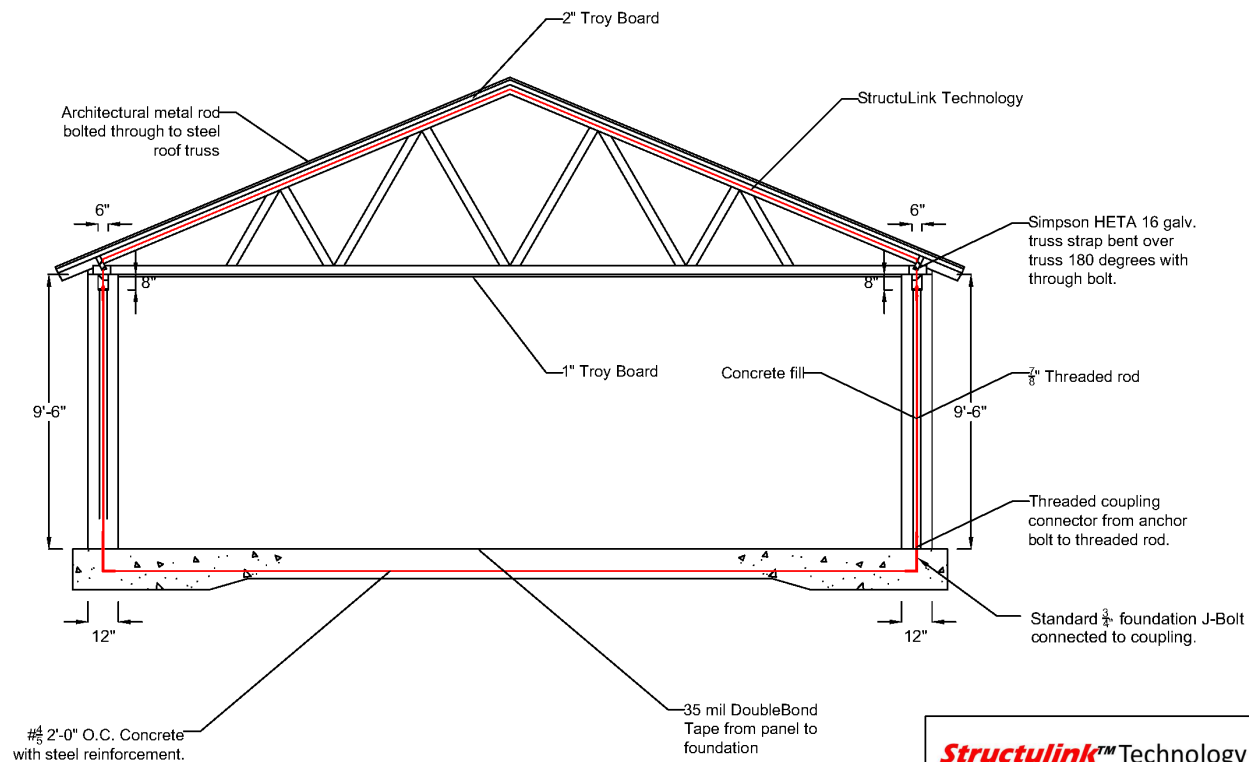
SCALE: AS NOTED

FLOOR PLAN

SHEET #

- OF -

Structulink™ Technology



1 SECTION
NTS

Structulink™ Technology

TROY
ACOUSTICS
CORPORATION



SERIOUS ACOUSTIC SOLUTIONS
www.troyacoustics.com
2580 Sidney Lanier Drive
Brunswick, GA 31525
Tel: (918) 375 8430
(918) 387 3306

HOUSING PRELIMINARY
DESIGN DRAWINGS

REVISIONS:

DRAWN BY: TCB
SCALE: AS NOTED

SECTION

SHEET #

- OF -

NOTE OF PERMISSION & DISCLAIMER
This drawing and the information contained herein is the sole property of Troy Acoustics Corporation and it is licensed and protected under U.S. Patent #5,661,273. Any use or reproduction in part or as a whole is strictly prohibited without the prior written permission of Troy Acoustics Corporation. Contact 1-800-387-3306 for more information.

Framing 1200 sq. ft. House (stick-built)

Industry Standard Estimates—

1. **Basic Framing:** A rough estimate for basic framing (walls, floors, roof) is about 4-5 man-hours per square foot. This includes framing the structure without interior finishing.
- For a 1200 square foot house: $1200 \text{ square feet} \times 4 \text{ man-hours/square foot} = 4800 \text{ man-hours}$
 $1200 \text{ square feet} \times 5 \text{ man-hours/square foot} = 6000 \text{ man-hours}$

•

Typical Range

Considering these factors, a typical range for framing a 1200 square foot house might be:

- **Lower Estimate** (efficient crew, less complexity): 4320 man-hours
- Upper Estimate** (less efficient crew, more complexity): 7200 man-hours



Finishing—1200 sq ft House (stick-built)

1. Fiberglass Insulation

- **Insulation Installation:** On average, it takes about 0.15 to 0.25 man-hours per square foot.
- For 1200 sq ft: $1200 \times 0.2 = 240$ 1200 \times 0.2 = 240 1200 \times 0.2 = 240 man-hours (average)

240 man-hours

2. Structural Sheeting

- **Sheeting Installation:** Typically, installing sheathing on walls takes about 0.1 to 0.2 man-hours per square foot.
- For 1200 sq ft: $1200 \times 0.15 = 180$ 1200 \times 0.15 = 180 1200 \times 0.15 = 180 man-hours (average)

180 man-hours

3. Waterproofing

- **Waterproofing:** Applying a waterproof barrier can take around 0.1 to 0.2 man-hours per square foot.
- For 1200 sq ft: $1200 \times 0.15 = 180$ 1200 \times 0.15 = 180 1200 \times 0.15 = 180 man-hours (average)

180 man-hours

4. Drywall Installation

- **Drywall Installation:** Hanging and finishing drywall typically takes about 0.3 to 0.5 man-hours per square foot.
- For 1200 sq ft: $1200 \times 0.4 = 480$ 1200 \times 0.4 = 480 1200 \times 0.4 = 480 man-hours (average)

480 man-hours

Total Man-Hours Calculation

1080 man-hours

