

"It's wonderful where the door isn't just something that leads you between places, but is something unto itself."

—Dan Kershaw, The Metropolitan Museum of Art





Enter something extraordinary.

John and Thad Walton know the beauty and warmth of wood. They founded a small building materials company in the upper Midwest over 30 years ago. There they developed expertise in doors and wood finishing, and built a successful company founded on the quality of their work. Years later, when they conceived of a custom wood door company, they wanted it to be different than any other company—a company with the ability to create magnificent designs that meet the desires of the most discerning clients; a company with an extensive offering of hardwoods, including rare and exotic woods; and, a company offering myriad customization details and options, creating truly unique products for the country's most exclusive homes. Founded in 1998 in the foothills of the Rocky Mountains, Sun Mountain is that company.

With a process that merges Old World craftsmanship with modern woodworking technology, Sun Mountain produces custom wood doors of the absolute highest quality. Sun Mountain doors are available in the broadest selection of designs and materials available. And, the company continues its founders' legacy as master wood finishers, with a wide collection of luxurious stains and hand-applied glazes, or custom color matching to taste.

Enjoy the journey to find the wood door you have been seeking. The door that reflects your unique style, that conveys sophistication, a warmth and comfort—that makes your house a home. The door that isn't just part of the home, but is "something unto itself."

Welcome to Sun Mountain—the premier maker of custom wood doors in the U.S.

Contents

Modern Contemporary	2
Classic Traditional	6
Rustic Artisan	10
Wood Species	14
Pre-finishing	15
Details	
Sticking + Panel Profiles	18
Applied Mouldings	19
Glass	20
Distressed Wood	22
Speakeasies + Wrought Iron Grilles	23
Clavos	23
Sidelites + Transoms	23
Function	
Hinges	24
Sliding Barn Doors	24
Pocket Doors	24
Bypass + Bi-fold Doors	24
Pre-hanging	25

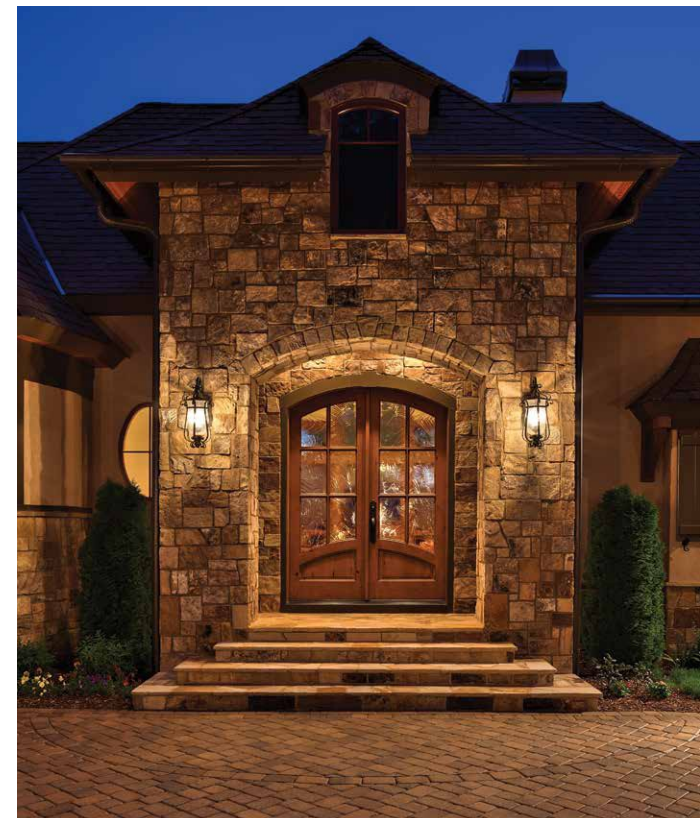
Front cover: SQ-0404-D007, African Mahogany, Longs Peak glaze.

Opposite page: SG-0005-D064, rift-sawn select White Oak, Winter Rye stain.

This page: FH-0106-D140, knotty Alder, Snake River glaze.

Back cover, from left: SG-0003-F010, select Walnut, Oaknut stain; SG-0002-D0034W, (exterior) and SG-0200-D0014C, (interior), select Alder, Mocha stain.

©2022 SUN MOUNTAIN, INC.



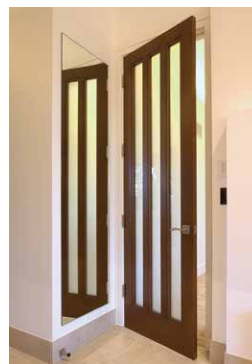


Modern | CONTEMPORARY

Modern or Contemporary home designs focus on simplification and elimination of undue ornamentation—facilitating functional, clutter-free living. These homes have open floor plans, odd or irregular shapes, flat roofs (often with multiple roof levels), minimal architectural touches, and oversized (often very tall) windows to welcome natural light. Contemporary wood doors normally have square tops and simple, clean lines.

Contemporary door designs include both stile and rail and flush door construction, with flush doors sometimes featuring horizontal grain patterns, kerfs, metal inlays, and decorative glass presented in simple geometric patterns. For stile and rail doors, panels are flat (typically not raised), with simple square sticking. Wood species are sometimes mixed on the door, with dark and lighter woods creating a natural contrast. Woods are typically clear of knots, but knotty woods are now frequently chosen as a counterpoint to modern style's austere character.

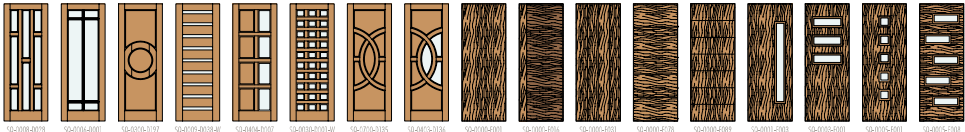
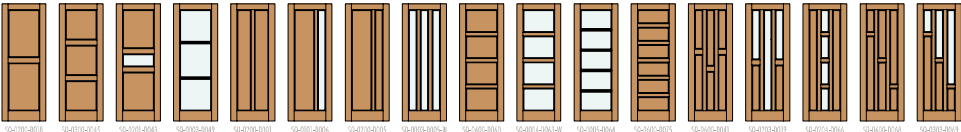
This page: SQ-0000-F120, Wormy Maple, Blackcurrent stain.
Opposite page, clockwise from upper left: SQ-0000-F016, Hard Maple, select Walnut edge, Oaknut stain; SQ-0007-D069-W, select Walnut, Caramel stain; SQ-0100-D001, Poplar, Blackcurrent stain; SQ-0300-D045, knotty Walnut, Clear Coat; SQ-0003-D005-W, select Alder, Mecha stain.



MODERN | CONTEMPORARY
DESIGN POSSIBILITIES



- 1 SQ-0200-D020, knotty Alder, Glacier Point glaze.
- 2 SQ-0003-F004, Sapele, Clear Coat.
- 3 SQ-0100-D001, rift-sawn select White Oak, Grays Peak glaze.
- 4 SQ-0200-D057, rift-sawn select White Oak, Rio Grande glaze.
- 5 SQ-0012-D075-W, select Alder, Yampa River glaze.
- 6 SQ-0007-D066, select Walnut, Clear Coat.
- 7 SQ-0300-D001, Wormy Maple, Poudre River glaze.
- 8 SQ-0704-D047, select Alder, Redcliff Mountain glaze.
- 9 SQ-0000-F084, rift-sawn select White Oak, Longs Peak glaze.





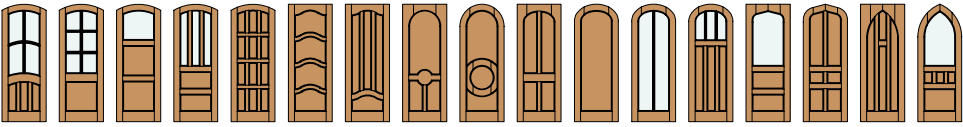
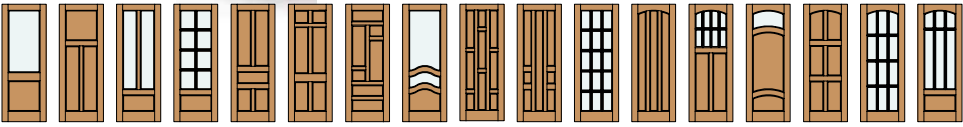
Classic | TRADITIONAL

Classic speaks to something that stands the test of time, something that endures. Immediately recognizable and comfortable, yet evoking a sense of quality and sophistication. Such are Sun Mountain's classic or traditional-styled doors. These doors naturally complement architectural styles such as Colonial, French Provincial, Old World, Tudor, or Victorian. These are typically multi-level homes with rectangular and symmetrical shapes, some with steep roofs with multiple intersecting roof lines and gables. Classic door designs almost always feature traditional stile and rail construction, often with raised panels and decorative elements such as applied mouldings. Door tops can be square or arched, including Cathedral or Gothic arches. Glass is often used to provide both beauty and light. Woods for these doors are often "select" or clear, meaning free from major knots.

This page: FA-0109-D095, knotty White Oak, Animas River glaze.
Opposite page, clockwise from upper left: SQ-0200-D012, select White Oak, Clear Coat; FH-0106-D138-P, select Alder, Animas River glaze; HF-0108-D002-P, knotty Alder, Fall River glaze; TF-0300-D045, knotty Walnut, Rio Grande glaze; FA-0206-D010, select Cherry, Honey stain.



CLASSIC | TRADITIONAL
DESIGN POSSIBILITIES



- 1 SQ-0300-D039, Hard Maple, Clear Coat.
- 2 TF-0200-D021, select Alder, Winter Rye stain.
- 3 FA-0400-D005, quarter-sawn select White Oak, Rio Grande glaze.
- 4 SQ-0200-D008, rift- and quarter-sawn select White Oak, Dyer Mountain glaze.
- 5 CH-0010-D035, Sapele, Honey stain.
- 6 FA-0400-D024, rift-sawn select White Oak, Glacier Point glaze.
- 7 TR-0200-D053, knotty Alder, Roan Creek glaze.
- 8 SQ-0600-D121, select Cherry, Clear Coat.
- 9 FA-0606-D009, knotty Alder, Rio Grande glaze.

See more designs at SUNMOUNTAINDOOR.COM.



Rustic | ARTISAN

Incorporating many elements found in nature, Rustic homes embody the simplicity and beauty of the great outdoors, and the handmade workmanship of artisans. Exteriors often feature timber or stone siding, blending with the outside environment. Interiors accent wood-beamed ceilings, grand stone fireplaces, wide plank hardwood flooring, and doors and mouldings made with knotty or "character" woods. These Rustic elements provide an atmosphere of easy relaxation.

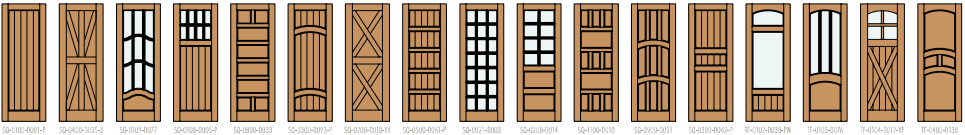
Sun Mountain offers a wide variety of Rustic door designs, typically with stile and rail construction. Door tops are often square, but flat arch tops and top rail arches are also popular. The Rustic motif includes the Mediterranean and Southwestern styles, with Tuscan designs featuring full arch tops. Raised panels are sometimes v-grooved, creating the illusion of panels with individual wood "planks." Glass is often featured, with simple clear panes, or decorative glass with a "hand blown" look. Popular woods include the knotty grades of such species as Alder, Cherry (also called "character" Cherry), Hickory, Oak, and Walnut. These woods are often "distressed" to create an antique, worn look. In addition, Sun Mountain offers "reclaimed" lumber, including Oak from old barns and granaries.

This page: SG-0200-D008-P, knotty Alder, Slate River glaze.

Opposite page, clockwise from upper left: SG-0100-D001-HX, Reclaimed Barnwood (weathered face), Clear Coat; SG-0014-D011, select Cherry, Clear Coat; SG-0000-D001-P (with metal inlays), knotty Alder, Glacier Point glaze; TR-0200-DC008-P, knotty Alder, Fall River glaze.



**RUSTIC | ARTISAN
DESIGN POSSIBILITIES**



- 1 FA-0000-F001-F, knotty Alder, Fall River glaze, antique distress.
- 2 SQ-0300-D045-C, knotty White Oak, Blue River glaze, wire brushed distress.
- 3 SQ-0104-D004-X, knotty Cherry, Clear Coat.
- 4 TT-0200-D018, knotty White Oak, Glacier Point glaze, heavy distress.
- 5 SQ-0200-D008, White Ash, Roan Creek glaze, heavy distress.
- 6 HF-0200-D001, knotty Alder, Rio Grande glaze.
- 7 SQ-0100-D001-HXP, knotty Hickory, Snake River glaze, antique distress.
- 8 TF-0300-D045-P, knotty Alder, Longs Peak glaze.
- 9 SQ-0200-D008, Wormy Maple, Yampa River glaze.



See more designs at SUNMOUNTINDOOR.COM.

Wood Species

Sun Mountain doors are available in 17 wood species (plus reclaimed barnwood) including both domestic and exotic hardwoods and softwoods. Many species can be further designated by "grade", "knotty" (sometimes called "character") or "select" (clear, with little or no knots). In addition to the traditional "flat" cut, unique effects can be achieved on some species by special cuts of the logs, such as "rift" and "quarter" cuts.



ALDER
Color varies from reddish-brown to light tan to honey. Knotty Alder has a rustic, rugged look.



ASH, Northern White
Valued for its strength, hardness, heavy weight, and elasticity, its use in baseball bats is famous.



BEECH
With exceptional color uniformity and texture, the lumber is steamed to a consistent tan color.



BIRCH, Yellow
Among the most featureless of North American hardwoods, although it has a pleasing figure with wavy grain.



CEDAR, Spanish (Pink-knot)
A softwood with a grain pattern similar to Mahogany. Color varies from reddish-brown to light pink.



CHERRY
A hardwood with rich color and flowing grain pattern. The fine, satiny texture is uniform and wavy.



HICKORY
A dense hardwood with high shock resistance. Heartwood is tan or red, with sapwood creamy white.



MAHOGANY, African
A hardwood with a straight or interlocked grain, silky ribbon figure, and moderately coarse texture.



MAPLE, Hard
A very strong hardwood with a closed, subdued grain and a uniform texture.



MAPLE, Soft
A hardwood with a straight, close grain pattern and a fine, even texture.



MAPLE, Wormy
Selected to show mineral streaks and color variations caused by the ambrosia worm.



OAK, Red
A hardwood chosen mainly for its prominent open grain pattern. Some color variation from reddish-tan to medium brown.



OAK, White
A dense hardwood with a white to cream to light brown color, and longer grains than Red Oak.



PINE
A softwood with a relatively straight grain pattern. Light in weight and low in shock resistance.



POPLAR
A hardwood with relatively straight grain and even texture, an excellent choice for a painted finish.



SAPELE
Native to tropical Africa, reminiscent of Mahogany with a distinctive grain figure.



WALNUT
A hardwood with beautiful, distinct differences in color between the sapwood and heartwood.



RECLAIMED BARNWOOD, Weathered Face
Sourced from old buildings, barns and granaries, a mix of Red and White Oak.

	HARDNESS ¹	CUTS	GRADES, PRICE
ALDER	590	F	K, \$ S, \$\$
ASH, Northern White	1320	F	S, \$\$
BEECH	1300	F	S, \$\$\$
BIRCH, Yellow	1260	F	S, \$\$\$
CEDAR, Spanish (Pin-knot)	600	F	K, \$\$\$\$ S, \$\$\$\$
CHERRY	950	F	K, \$\$ S, \$\$\$\$
HICKORY	1970	F	K, \$\$ S, \$\$\$
MAHOGANY, African	840	Q	S, \$\$\$\$
MAPLE, Hard	1440	F	S, \$\$\$
MAPLE, Soft	940	F	S, \$\$
MAPLE, Wormy	940	F	S, \$
OAK, Red	1290	F, R & Q	S, \$\$-\$\$\$
OAK, White	1360	F, R or Q	S, K, \$ \$-\$\$-\$\$\$\$
PINE	380	F	K, \$ S, \$\$
POPLAR	430	F	S, \$
SAPELE	1500	Q	S, \$\$\$\$
WALNUT	1010	F	K, \$\$ S, \$\$\$\$
RECLAIMED BARNWOOD, Weathered Face	1290	RC	K, \$\$\$\$

¹The Janka Hardness Test measures the resistance of wood to denting and wear.
F = Flat-cut R = Rift-sawn K = Knotty Grade
Q = Quarter-sawn RC = Reclaimed S = Select Grade



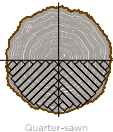
Flat-cut



Rift-sawn



Rift-sawn White Oak



Quarter-sawn



Quarter-sawn White Oak

Pre-finishing

Wood finishing (called "pre-finishing") is a hallmark of Sun Mountain. The company's wood finishing experience began over 30 years ago, and its finishes are renowned in the door industry. Sun Mountain's wood finishes are "fine furniture" quality, providing much higher quality and lower cost than on-site painting. And, factory pre-finished products are ready to install, reducing time and scheduling in the construction process. The company's pre-finishing process and strengths include:

- A minimum of 30 minutes per door hand-sanding—ensuring grain closure and perfect preparation prior to finishing
- Top quality catalyzed conversion and UV (Ultra-Violet) varnish systems (similar to high-end pre-finished cabinets and fine furniture)
- Proprietary stain formulas created specifically for Sun Mountain's environment and applied using HVLP (High Volume Low Pressure) and air-assisted spray guns—ensuring even tones with no blotchiness
- A "clean room," dust-free environment not achievable on the jobsite, preventing small dust and dirt particles from settling on the product before drying
- Six-sided coating, providing moisture seal on all sides, preventing product warping; Sun Mountain's warranty for interior doors increases from one year to five years on pre-finished options
- Expert artisans creating a broad selection of unique, high-end finishes including hand-applied glazing, highlighting, shadowing, and distressing
- A broad collection of standard stain and glaze colors, or custom color matching—perfectly matching your unique design and style

Sun Mountain's standard stain and glaze options (as well as Clear Coat), on nine of the most popular wood species, are shown on the following pages.

STANDARD STAINS + GLAZES

Sun Mountain's standard stains and glazes shown on nine of the most popular wood species. Additional species and custom color matching available.

	LIGHT								DARK							
	CLEAR COAT	YAMPA RIVER GLAZE	POUDRE RIVER GLAZE	GOLDEN HORN GLAZE	SNAKE RIVER GLAZE	RIO GRANDE GLAZE	SLATE RIVER GLAZE	CARAMEL STAIN	FALL RIVER GLAZE	HOPE MOUNTAIN GLAZE	LONGS PEAK GLAZE	MOCHA STAIN	EAGLE RIVER GLAZE	CAJUN STAIN	ESPRESSO STAIN	
ALDER																
ASH																
CHERRY																
HICKORY																
MAPLE (HARD)																
OAK (WHITE)																
POPLAR																
SAPELE																
WALNUT																

RED								GRAY							
HONEY STAIN	CINNAMON STAIN	ANIMAS RIVER GLAZE	ROAN CREEK GLAZE	MAROON PEAK GLAZE	REDCLIFF MOUNTAIN GLAZE	COPPER STAIN		GRAYS PEAK GLAZE	BLUE RIVER GLAZE	GLACIER POINT GLAZE	WINTER RYE STAIN	FIG STAIN	BLACK-CURRENT STAIN	DYER MOUNTAIN GLAZE	
															ALDER
															ASH
															CHERRY
															HICKORY
															MAPLE (HARD)
															OAK (WHITE)
															POPLAR
															SAPELE
															WALNUT

Colors shown may not exactly match actual wood finishes. Physical samples are available.

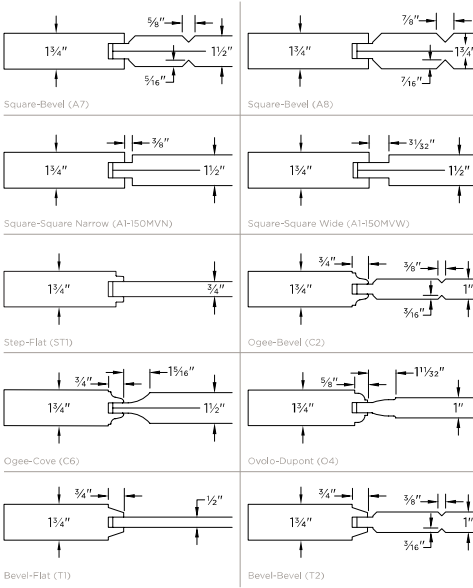
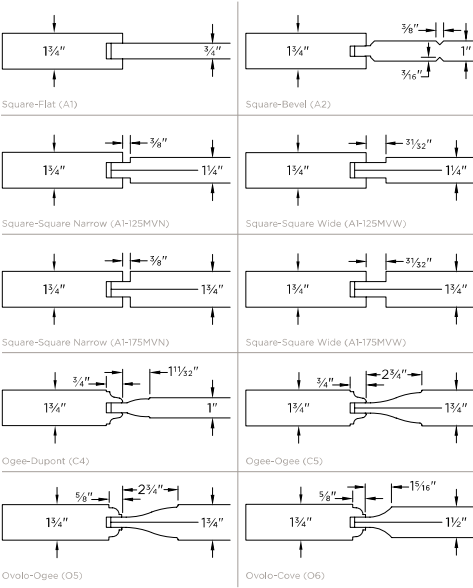
Details

STICKING + PANEL PROFILES

Panels are the large, wide, and flat components of a stile and rail door. A panel profile is a decorative cut into the edge of the wood panel, creating the "raised panel" effect and adding depth and beauty to the design. Sticking is the decorative profile on the edge of the stiles and rails (the vertical and horizontal frames of the door, respectively) where they meet the panel. Sun Mountain makes over 90 combinations of sticking and panel profiles. The most popular of these profiles are shown here.

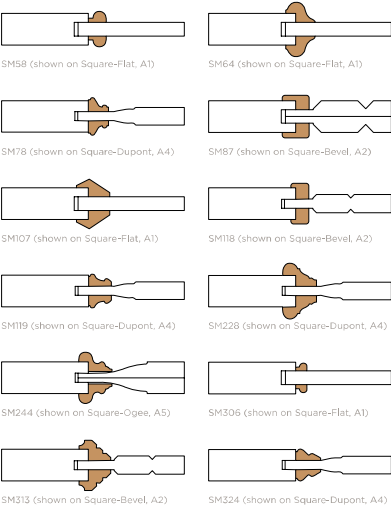


From top: Ogee-Ogee (C5) sticking and panel profiles; Square-Ogee (A5) sticking and panel profiles, with SM4 applied moulding.



APPLIED MOULDINGS

Applied mouldings are an optional decorative trim attached where the panels meet the stiles and rails of the door, or placed on the panel surface to create a decorative pattern. Sun Mountain manufactures over 30 applied moulding profiles. The most popular of these mouldings are shown here.



GLASS

Doors with glass are commonly referred to as "lited" doors, and individual panes of glass are called "lites." Sun Mountain offers over 25 styles of glass for doors. All door glass is tempered for both safety and building code compliance.

Interior doors are normally made with 1/4" thick single pane glass (called "single glaze" or SG glass). Exterior doors generally use 1/2" or 3/8" thick "insulated glass" (called IG), with two or three panes hermetically sealed and separated by dry airspace. Thermal performance can be further improved with "Low-E" (or low emissivity) glass. Sun Mountain's most popular glass styles are shown here.



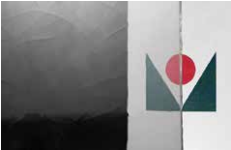
SG-002L-D003-W, select Alder, Mocha stain.



Baroque



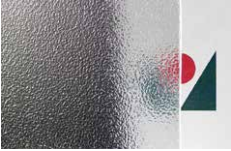
Chord



German New Antique



Glacier



Pattern 62



Rain



Satin Etch



Satin Seedy



Clear



Clear, Single Bevel (One Side of Glass)



Clear, Low-E



Cotswold



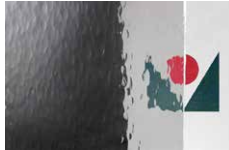
Granite



Graylite



Hammered



Hammered, Small



Rainwater



Reeded, 1/2"



Rolled Glue Chip



Rough Rolled



Seedy



Water



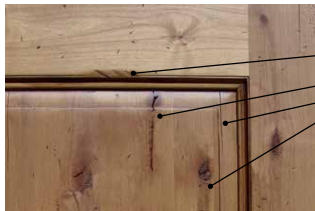
White Lami

Glass styles subject to availability.



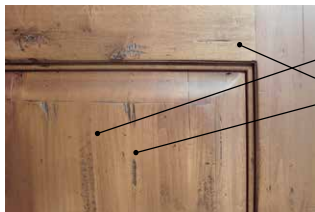
LIGHT DISTRESS
Characterized by:

- Scratches
- Lightly broken edges
- Surface dents and dings



MEDIUM DISTRESS
Includes features of light distress, with:

- Heavily broken edges on panels and sticking
- Worm holes
- Long cracks
- Planer chatter around knots



HEAVY DISTRESS
Includes features of medium distress, with:

- Heavily planed and sanded surface finish
- Random gouges
- Additional worm holes

DISTRESSED WOOD

Sun Mountain can "distress" new wood to give it a worn, antique look and feel. Skilled artisans do this by hand, using a variety of Old World tools. Distressing is particularly dramatic on rustic (knotty) wood species, and pre-finished glaze options beautifully highlight the warmth and character of the antiqued wood.

Wire brushing is a distressing technique that creates a unique weathered effect. A wire brush machine is used to remove soft summerwood fibers of the wood, accentuating harder grains and resulting in a gently worn texture. This technique works best on softwoods such as Pine or Cedar, and some hardwoods such as Oak.

Sun Mountain's standard distress options are shown here.



MEDIUM DISTRESS WITH BROKEN EDGES ON V-GROOVES (PLANK DOORS ONLY)
Includes features of medium distress, with:

- Tear-out and broken edges on V-grooves



WIRE BRUSHED DISTRESS
Characterized by an overall worn texture

SPEAKEASIES + WROUGHT IRON GRILLES

A speakeasy is small window cut into an entry door at eye level, used for secure greeting of visitors (with the term originating from Prohibition-era America of the 1920s). Sun Mountain's speakeasies typically include tempered and insulated clear glass, and an optional wooden door with latch.

Wrought iron grilles can be attached on the door providing security for glass. Sun Mountain offers grilles in several distinctive styles to match the door or architectural design. Doors with a speakeasy typically include a small grille, while larger grilles are used over glass panes on the door or sidelites.



CLAVOS

Clavos are decorative nails used to simulate fasteners for traditional mortise and tenon joinery. They accent doors and other millwork, to create or enhance an antique or Old World look and feel. Sun Mountain offers spin-cast zinc alloy clavos in a variety of shapes, sizes, and patinas, with a roofing nail for secure and easy placement.



SIDELITES + TRANSOMS

Sidelites are tall, narrow windows on one or both sides of the door. A transom is a window above the door. Both add substance to an entry, making the doorway appear wider, taller, and more prominent. And sidelites and transoms invite natural light into the front entry, making a foyer brighter and more airy.

Sidelites and transoms can have square or arched tops, can integrate with the door's design, and coordinate with any architectural style.

At left: SQ-0200-DO08-R Sapele, Yampa River glaze.

At right, from left: SQ-0101-DO03, Poplar, finished on-site by customer; SQ-0200-DO08-P, knotty Alder, Fall River glaze.



Function

HINGES

PIN AND BARREL

Sun Mountain offers square-corner, ball bearing pin and barrel hinges, available in a choice of nine finishes, standard with factory pre-hanging.

HIDDEN

Sun Mountain offers "hidden hinges" from leading manufacturers. These hinges mount in mortise pockets on the door edge and frame, and are completely hidden from view from the face of the door. This allows for a clean, modern look—with no pin and barrel hinges visible on the door face.

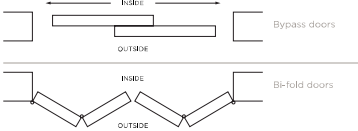
SLIDING BARN DOORS

Sun Mountain offers both rustic and contemporary sliding barn door hardware. Rustic designs include a classic flat-track hardware system, with spoke wheels mounted to the door with wide strap hangers. Contemporary designs include sleek stainless steel hardware, with large roller wheels running on a rounded stainless steel bar or flat-track.



BYPASS + BI-FOLD DOORS

Bypass doors are double doors that open and close by sliding side-by-side on a metal track. Bi-fold doors are door pairs hinged in the middle, that slide on a track and open and close in an "accordion" fashion. Bypass and bi-fold doors are most often used for interior closet or pantry door applications. Sun Mountain includes track hardware with the price of these doors.



PIVOT

Pivot hinges attach at the top and bottom of the door, installed several inches from the door edge, allowing for a unique swinging function. Sun Mountain offers pivot hinges from leading suppliers.

At left: SQ-0001-F003, knotty Walnut, Clear Coat.
Below: SQ-C003-D005-W, select Alder, Mocha stain.

POCKET DOORS

Pocket doors were first created over 100 years ago, and were a popular feature in many Victorian-style homes in the late 1800s and early 1900s. A pocket door slides on a hardware track inside the adjacent wall structure, disappearing into the wall when open. Though pocket doors fell out of design favor for many years, they are now making a resurgence, helped by new and improved (smooth and quiet) hardware systems.



PRE-HANGING

A pre-hung door consists of a door hung on hinges and assembled in a wood frame (the frame is also called the door "jamb"), with a door stop. A pre-hung door is ready to install in the door opening, with no on-site assembly required. This reduces construction time and scheduling, and lowers project cost. If the pre-hung door is also pre-finished, this further reduces steps and cost in the construction process.

Sun Mountain not only manufactures the highest quality doors, but also offers optional pre-hanging of the doors. Factory pre-hanging ensures that hinge pockets are mortised square and precise, and that hinges are always flush on the door and frame. Hinges are included in the price of pre-hanging, and are available in a selection of metal finishes. Machining for hardware (boring and latch/deadbolt mortising for handles and locksets) is also provided at no additional cost with factory pre-hanging. A choice of single or double bore options is available in different "backset" positions (the placement of the handle or lockset from the door edge). Factory pre-hanging also ensures that the "reveal" (the small gap between the door and the jamb, when the door is closed) is always correct. Sun Mountain's standard pre-hanging options are shown here. Custom door jambs, including unique designs and sizes, are also available.



Pre-hung interior door.

Pre-hung exterior door.

INTERIOR DOORS

For interior doors, Sun Mountain offers solid wood flat jambs with an adjustable stop. If the door is ordered with a factory-applied wood finish, the jambs and stop are finished separately. This provides for installation of the jamb and on-site adjustment of the stop without finish touch-up.

Sun Mountain also offers solid wood "kerfed" flat jambs. A kerf is a slot cut into the edge of the jamb, used for wrapping the drywall corner bead (square or rounded drywall corners) into the jamb. Kerfed flat jambs provide for a "caseless" opening, with drywall connecting directly to the door frame, thus requiring no case mouldings. Kerfs can be on both sides (as shown) or on just one side of the jamb.



Flat jamb with adjustable stop (mitered stop shown).

Kerfed (both sides) flat jamb with adjustable stop (full-length stop shown).

EXTERIOR DOORS

Pre-hanging of exterior doors is much more expensive than pre-hanging interior doors. First, exterior doors are framed with a more robust rabbeted jamb. A rabbeted jamb includes a non-adjustable stop cut into solid wood, and Q-Lon® weatherstrip that is inserted into a kerf (or slot) cut into the stop of the jamb. Weatherstrip is a durable foam rubber material used to seal the side and top edges of an exterior door, to limit air transfer and exposure to outside elements.

Sun Mountain also offers solid wood kerfed rabbeted jambs. If this application is desired, exterior doors are normally kerfed on only one side—the inside—of the door.



Rabbeted jamb with weatherstrip.

Kerfed (one side) rabbeted jamb.



140 COMMERCE DRIVE | BERTHOUD, CO 80513

888.786.6861

info@sunmountaindoor.com

SUNMOUNTAINDOOR.COM

Showrooms:

Berthoud, CO (HQ)

Colorado Springs, CO

Denver, CO

Asheville, NC

Naples, FL

Park City, UT

San Francisco, CA

Santa Fe, NM

Scottsdale, AZ