

HVAC SHOWCASE

2025



YOUR SATISFACTION, OUR PRIORITY

At **ORTECH**, we are unwavering in our commitment to delivering superior LED lighting products, HVAC solutions, and electrical supplies. Our pledge is to ensure every offering excels in performance, reliability, and energy efficiency.

Rely on **ORTECH** for cutting-edge, premium solutions that elevate your environment and consistently surpass your expectations.



Since our inception in 2004, we have been dedicated to providing the most reliable construction materials, including lighting, electrical, and ventilation products.

As a national supplier, **ORTECH** products are now trusted in over 2 million homes across Canada and the USA.

| | | |
|--|------------------------------|--|
| FANS | RANGEHOODS | CONTROLS |
| AC MOTOR BATHROOM FANS 3 | KITCHEN RANGEHOODS 29 | SENSORS, SWITCHES, CONTROLLERS 33 |
| DC MOTOR BATHROOM FANS 6 | | TIMERS |
| GRILLES 15 | | |
| INLINE FANS 16 | | |
| ERV HRV | HEATERS | ACCESSORIES |
| ENERGY AND HEAT RECOVERY VENTILATORS 23 | ELECTRIC HEATERS 31 | FIRE DAMPERS 37 |
| | | DUCTWORK, LINT TRAPS, AIR VALVES, DRYER BOX, VAPOUR BARRIERS, ACCESS DOORS & PANELS |

SAY GOODBYE TO HUMIDITY

ORTECH's AC Motor Bathroom Fans are designed to provide efficient ventilation, ensuring your bathroom stays fresh and free from moisture buildup. These fans feature powerful AC motors that deliver reliable performance while maintaining energy efficiency, making them an excellent choice for residential and commercial use.

Engineered for quiet operation, **ORTECH's** bathroom fans offer effective air circulation without disturbing noise, creating a comfortable environment. Their durable construction and sleek design seamlessly blend into any bathroom décor, adding both functionality and style.

In addition to their performance, these fans are easy to install and maintain. With versatile options to suit different bathroom sizes, **ORTECH's** AC motor bathroom fans ensure optimal air quality and protection against humidity, mold, and mildew.



AC
MOTOR



UNIVERSAL
SERIES

3YR WARRANTY



OD-9005PB

90 CFM Universal Series Fan With Rugged Polymeric Resin Blower

- Static Pressure in inches w.g.: 0.1 | 0.25
- Air Volume (CFM): 90 | 67
- Noise (Sones): 0.5 | N/A
- Fan Watts: 25W | N/A
- Duct Diameter: 6"
- Power: 120V/60Hz
- Housing Size: 11-3/8"x10-1/2"x7-5/8"
- Grille Dimensions: 13"x14"
- Fan Weight: 10.2 lbs

- Comes with torsion spring clips that helps mount grille evenly
- Known for its high efficiency and long lasting reliability



UNIVERSAL
SERIES

3YR WARRANTY



OD-1209PB

120 CFM Universal Series Fan With Rugged Polymeric Resin Blower

- Static Pressure in inches w.g.: 0.1 | 0.25
- Air Volume (CFM): 120 | 101
- Noise (Sones): 0.9 | N/A
- Fan Watts: 30W | N/A
- Duct Diameter: 6"
- Power: 120V/60Hz
- Housing Size: 11-3/8"x10-1/2"x7-5/8"
- Grille Dimensions: 13"x14"
- Fan Weight: 10.2 lbs

- Comes with torsion spring clips that helps mount grille evenly
- Known for its high efficiency and long lasting reliability



PREMIUM
SERIES

3YR WARRANTY



OD45-9005PB

90 CFM Premium Series Fan For More Efficient Air Transfer & Operation

- Static Pressure in inches w.g.: 0.1 | 0.25
- Air Volume (CFM): 90, 45 | 67, 15
- Noise (Sones): 0.5, 0.4 | N/A
- Fan Watts: 25W, 16W | 23W, 14W
- Duct Diameter: 6"
- Power: 120V/60Hz
- Housing Size: 11-3/8"x10-1/2"x7-5/8"
- Grille Dimensions: 13"x14"
- Fan Weight: 10.2 lbs

- 6" detachable polymeric collar
- Operates at lower RPM's to provide quieter operation



UNIVERSAL
SERIES

3YR WARRANTY



OD-1109PB

110 CFM Universal Series Fan With Rugged Polymeric Resin Blower

- Static Pressure in inches w.g.: 0.1 | 0.25
- Air Volume (CFM): 110 | 92
- Noise (Sones): 0.9 | N/A
- Fan Watts: 30W | N/A
- Duct Diameter: 6"
- Power: 120V/60Hz
- Housing Size: 11-3/8"x10-1/2"x7-5/8"
- Grille Dimensions: 13"x14"
- Fan Weight: 10.2 lbs

- Comes with torsion spring clips that helps mount grille evenly
- Known for its high efficiency and long lasting reliability



UNIVERSAL
SERIES

3YR WARRANTY



OD-1505PB

150 CFM Universal Series Fan With Rugged Polymeric Resin Blower

- Static Pressure in inches w.g.: 0.1 | 0.25
- Air Volume (CFM): 150 | 115
- Noise (Sones): 0.5 | N/A
- Fan Watts: 35W | N/A
- Duct Diameter: 6"
- Power: 120V/60Hz
- Housing Size: 11-3/8"x10-1/2"x7-5/8"
- Grille Dimensions: 13"x14"
- Fan Weight: 10.2 lbs

- Comes with torsion spring clips that helps mount grille evenly
- Known for its high efficiency and long lasting reliability



PREMIUM
SERIES

3YR WARRANTY



OD45-1109PB

110 CFM Premium Series Fan For More Efficient Air Transfer & Operation

- Static Pressure in inches w.g.: 0.1 | 0.25
- Air Volume (CFM): 110, 45 | 100, 15
- Noise (Sones): 1.1, 0.4 | N/A
- Fan Watts: 30W, 16W | 29W, 14W
- Duct Diameter: 6"
- Power: 120V/60Hz
- Housing Size: 11-3/8"x10-1/2"x7-5/8"
- Grille Dimensions: 13"x14"
- Fan Weight: 10.2 lbs

- 6" detachable polymeric collar
- Operates at lower RPM's to provide quieter operation



UNIVERSAL
SERIES



ODC-8003

80 CFM Next Generation Universal Series
Fan With Capacitor Motor

- Static Pressure in inches w.g.: 0.1 | 0.25
- Air Volume (CFM): 80 | 62
- Noise (Sones): 0.3 | 0.9
- Fan Watts: 16W | N/A
- Duct Diameter: 4"
- Power: 120V/60Hz
- Housing Size: 9"x9"x5-3/4"
- Grille Dimensions: 11-7/8"x11-3/8"
- Fan Weight: 7.4 lbs

- Ultra silent with high performance
- Known for its high efficiency and long lasting reliability



UNIVERSAL
SERIES



ODC-9006

90 CFM Next Generation Universal Series
Fan With Capacitor Motor

- Static Pressure in inches w.g.: 0.1 | 0.25
- Air Volume (CFM): 90 | 73
- Noise (Sones): 0.6 | N/A
- Fan Watts: 16W | N/A
- Duct Diameter: 4"
- Power: 120V/60Hz
- Housing Size: 9"x9"x5-3/4"
- Grille Dimensions: 11-7/8"x11-3/8"
- Fan Weight: 7.4 lbs

- Ultra silent with high performance
- Known for its high efficiency and long lasting reliability



UNIVERSAL
SERIES



ODC-1109

110 CFM Next Generation Universal
Series Fan With Capacitor Motor

- Static Pressure in inches w.g.: 0.1 | 0.25
- Air Volume (CFM): 110 | 99
- Noise (Sones): 0.9 | N/A
- Fan Watts: 25W | N/A
- Duct Diameter: 4"
- Power: 120V/60Hz
- Housing Size: 9"x9"x5-3/4"
- Grille Dimensions: 11-7/8"x11-3/8"
- Fan Weight: 7.4 lbs

- 6" detachable polymeric collar
- Operates at lower RPM's to provide quieter operation

ENHANCED

AND

IMPROVED



UNIVERSAL
SERIES



ODE-5004

50 CFM Next Generation Universal Series
Fan With Capacitor Motor

- Static Pressure in inches w.g.: 0.1 | 0.25
- Air Volume (CFM): 50 | 41
- Noise (Sones): 0.4 | 1.4
- Fan Watts: 16W | N/A
- Duct Diameter: 4"
- Power: 120V/60Hz
- Housing Size: 7-1/2"x7-1/4"x5-5/8"
- Grille Dimensions: 8-5/8"x9-1/2"
- Housing: Galvanized Steel

- Very quiet fan for ceiling mounted hold
- Known for its high efficiency and long lasting reliability



UNIVERSAL
SERIES



ODE-8007

80 CFM Next Generation Universal Series
Fan With Capacitor Motor

- Static Pressure in inches w.g.: 0.1 | 0.25
- Air Volume (CFM): 80 | 69
- Noise (Sones): 0.7 | 1.5
- Fan Watts: 19W | N/A
- Duct Diameter: 4"
- Power: 120V/60Hz
- Housing Size: 7-1/2"x7-1/4"x5-5/8"
- Grille Dimensions: 8-5/8"x9-1/2"
- Fan Weight: Galvanized Steel

- Very quiet fan for ceiling mounted hold
- Known for its high efficiency and long lasting reliability



UNIVERSAL
SERIES



ODE-9010

90 CFM Next Generation Universal Series
Fan With Capacitor Motor

- Static Pressure in inches w.g.: 0.1 | 0.25
- Air Volume (CFM): 90 | 78
- Noise (Sones): 1.0 | 1.5
- Fan Watts: 20W | N/A
- Duct Diameter: 4"
- Power: 120V/60Hz
- Housing Size: 7-1/2"x7-1/4"x5-5/8"
- Grille Dimensions: 8-5/8"x9-1/2"
- Fan Weight: Galvanized Steel

- Very quiet fan for ceiling mounted hold
- Known for its high efficiency and long lasting reliability



UNIVERSAL
SERIES



OD-5034

50 CFM Next Generation Universal Series
Fan With A Shaded Pole Motor

- Static Pressure in inches w.g.: 0.1
- Air Volume (CFM): 50
- Noise (Sones): 3.4
- Fan Watts: 44.2W
- Duct Diameter: 3"
- Power: 120V/60Hz
- Housing Size: 7-1/2"x7-1/4"x3-5/8"
- Grille Dimensions: 8-3/4"x9-1/2"
- Housing: Galvanized Steel

- OD-5034H-CONT = 6pc contractor pack for fan housing only
- OD-5034M-CONT = 6pc contractor pack for fan motor assembly only



UNIVERSAL
SERIES



OD-7035

70 CFM Next Generation Universal Series
Fan With A Shaded Pole Motor

- Static Pressure in inches w.g.: 0.1
- Air Volume (CFM): 70
- Noise (Sones): 3.5
- Fan Watts: 64.5W
- Duct Diameter: 4"
- Power: 120V/60Hz
- Housing Size: 7-1/2"x7-1/4"x3-5/8"
- Grille Dimensions: 8-3/4"x9-1/2"
- Fan Weight: Galvanized Steel

- OD-7035H-CONT = 6pc contractor pack for fan housing only
- OD-7035M-CONT = 6pc contractor pack for fan motor assembly only



ELEVATE YOUR AIR QUALITY

ORTECH's DC Motor Bathroom Fans offer superior ventilation with energy-efficient DC motors designed to maximize performance while minimizing power consumption. These fans deliver consistent airflow, ensuring that your bathroom stays fresh and free from excess humidity, all while lowering your energy bills.

Known for their ultra-quiet operation, these fans provide powerful ventilation without the disruptive noise, creating a peaceful and comfortable bathroom environment. The sleek design and durable build make them a perfect addition to any modern bathroom, blending seamlessly into the space.

Installation is quick and easy, with versatile options to suit various bathroom sizes and needs. **ORTECH's** DC motor fans are also designed for longevity and low maintenance, ensuring reliable air quality control while protecting your bathroom



DC
MOTOR



UNIVERSAL
SERIES

5YR WARRANTY



ODD-110-18PB

80 to 140 CFM Universal Series DC Motor Fan With Built-in Humidity Sensor

- Static Pressure in inches w.g.: 0.1 | 0.25, 0.1 | 0.25, 0.1 | 0.25
- Air Volume (CFM): 80, 110, 140
- Noise (Sones): 0.5 | N/A, 0.3 | N/A, 0.4 | N/A
- Fan Watts: 5.6W, 8.5W, 13W
- Duct Diameter: 6"
- Power: 120V/60Hz
- Housing Size: 11-3/8"x10-1/2"x7-5/8"
- Grille Dimensions: 13"x13-3/4"
- Fan Weight: 10.2 lbs

■ One of the quietest fans available in the market today



SUPER SLIM
SERIES

5YR WARRANTY



ODDSS-100-3

Three Speeds Super Slim Series Fan With 4" Polymeric Collar

- Static Pressure in inches w.g.: 0.1 | 0.25, 0.1 | 0.25, 0.1 | 0.25
- Air Volume (CFM): 50, 80, 100
- Noise (Sones): 0.8 | N/A, 1.0 | N/A, 1.5 | N/A
- Fan Watts: 3.7W | 6.5W, 6.7W | 10W, 10.2W | 14.4W
- Duct Diameter: 4" (oval)
- Power: 120V/60Hz
- Housing Size: 10-1/4"x10-1/4"x3-3/8"
- Grille Dimensions: 13-3/4"x13"
- Fan Weight: 6.5 lbs

■ One of the slimmest fans in HVAC industry, Capable of wall or ceiling mounting



SUPER SLIM
SERIES

5YR WARRANTY



ODDSS-100-3HS

Three Speeds Super Slim Series Fan With Built-in Humidity Sensor

- Static Pressure in inches w.g.: 0.1 | 0.25, 0.1 | 0.25, 0.1 | 0.25
- Air Volume (CFM): 50, 80, 100
- Noise (Sones): 0.8 | N/A, 1.0 | N/A, 1.5 | N/A
- Fan Watts: 3.7W | 6.5W, 6.7W | 10W, 10.2W | 14.4W
- Duct Diameter: 4" (oval)
- Power: 120V/60Hz
- Housing Size: 10-1/4"x10-1/4"x3-3/8"
- Grille Dimensions: 13-3/4"x13"
- Fan Weight: 6.5 lbs

■ One of the slimmest fans in HVAC industry, Capable of wall or ceiling mounting





COMPACT
SERIES



ODD-110S

Get The Best Of Both Worlds With This
3 Speed Quiet And Sleek Fan

| | |
|-----------------------------------|-----------------|
| ■ Static Pressure in inches w.g.: | 0.1 |
| ■ Air Volume (CFM): | 50 80 110 |
| ■ Noise (Sones): | 0.3 0.6 0.9 |
| ■ Fan Watts: | 4W 5W 10W |
| ■ Duct Diameter: | 4" |
| ■ Power: | 120V/60Hz |
| ■ Housing Size: | 9"x9"x5-3/4" |
| ■ Grille Dimensions: | 11-7/8"x11-3/8" |
| ■ Fan Weight: | 7 lbs |

- Ultra silent with high performance
- Perfect for ceiling mounting



COMPACT
SERIES



ODD-70-1

70 CFM Next Generation Single Speed
Compact Series Fan

| | |
|-----------------------------------|-----------------|
| ■ Static Pressure in inches w.g.: | 0.1 0.25 |
| ■ Air Volume (CFM): | 75 62 |
| ■ Noise (Sones): | 0.4 1.1 |
| ■ Fan Watts: | 4.5W 7.4W |
| ■ Duct Diameter: | 4" |
| ■ Power: | 120V/60Hz |
| ■ Housing Size: | 9"x9"x5-3/4" |
| ■ Grille Dimensions: | 11-7/8"x11-3/8" |
| ■ Speed: | 70 CFM |

- Hanger bars not included - Sold separately
- Known for its high efficiency and long lasting reliability



SUPREME
SERIES



ODD-300-3

3 Speed Supreme Series Fan Designed
To Operate Continuously And Quietly

| | |
|--|------------------------------------|
| ■ Static Pressure in inches w.g.: | 0.1 0.25, 0.1 0.25, 0.1 0.25 |
| ■ Air Volume (CFM): | 200 173, 250 217, 300 270 |
| ■ Noise (Sones): | 2.0 N/A, 3.0 N/A, 0.4 N/A |
| ■ Fan Watts: | 25.2W, 39W, 52W |
| ■ Duct Diameter: | 6" |
| ■ Power: | 120V/60Hz |
| ■ Housing Size: | 11-3/8"x10-1/2"x7-5/8" |
| ■ Grille Dimensions: | 13"x13-3/4" |
| ■ Fan Weight: | 12.5 lbs |
| ■ Heavy duty 4 point mounting bracket adjustable up to 24" from centre | |



SUPREME
SERIES



ODD-500-4

4 Speed Supreme Series Fan Designed
To Operate With High Efficiency

| | |
|--|--|
| ■ Static Pressure in inches w.g.: | 0.1 0.25, 0.1 0.25, 0.1 0.25 |
| ■ Air Volume (CFM): | 202 153, 302 251, 401 336, 504 445 |
| ■ Noise (Sones): | 0.4 1.4, 1.4 1.9, 2.8 2.9, 4.6 5.7 |
| ■ Fan Watts: | 12W 18W, 22W 27W, 38W 41W, 66W 70W |
| ■ Duct Diameter: | 8" |
| ■ Power Fan Weight: | 120V/60Hz 12.5 lbs |
| ■ Housing Size: | 14-1/4"x14-1/4"x9" |
| ■ Grille Dimensions: | 17-1/4"x17-3/4" |
| ■ Double hanger bar mounting brackets that are adjustable up to 26 inch span | |



COMPACT
SERIES



ODD-110HS

3 Speed Quiet And Sleek Compact Series
Fan With Humidity Sensor

| | |
|-----------------------------------|-----------------|
| ■ Static Pressure in inches w.g.: | 0.1 |
| ■ Air Volume (CFM): | 50 80 110 |
| ■ Noise (Sones): | 0.3 0.6 0.9 |
| ■ Fan Watts: | 4W 5W 10W |
| ■ Duct Diameter: | 4" |
| ■ Power: | 120V/60Hz |
| ■ Housing Size: | 9"x9"x5-3/4" |
| ■ Grille Dimensions: | 11-7/8"x11-3/8" |
| ■ Fan Weight: | 7 lbs |

- Ultra silent with high performance
- Perfect for ceiling mounting



COMPACT
SERIES



ODD-90-1

90 CFM Next Generation Single Speed
Compact Series Fan

| | |
|-----------------------------------|-----------------|
| ■ Static Pressure in inches w.g.: | 0.1 0.25 |
| ■ Air Volume (CFM): | 95 78 |
| ■ Noise (Sones): | 0.7 1.2 |
| ■ Fan Watts: | 7.2W 9W |
| ■ Duct Diameter: | 4" |
| ■ Power: | 120V/60Hz |
| ■ Housing Size: | 9"x9"x5-3/4" |
| ■ Grille Dimensions: | 11-7/8"x11-3/8" |
| ■ Speed: | 90 CFM |

- Hanger bars not included - Sold separately
- Known for its high efficiency and long lasting reliability



COMPACT
SERIES



ODD-110HS+MS

3 Speed Quiet And Sleek Compact Series
Fan With Humidity Sensor & Motion Sensor

| | |
|-----------------------------------|-----------------|
| ■ Static Pressure in inches w.g.: | 0.1 |
| ■ Air Volume (CFM): | 50 80 110 |
| ■ Noise (Sones): | 0.3 0.6 0.9 |
| ■ Fan Watts: | 4W 5W 10W |
| ■ Duct Diameter: | 4" |
| ■ Power: | 120V/60Hz |
| ■ Housing Size: | 9"x9"x5-3/4" |
| ■ Grille Dimensions: | 11-7/8"x11-3/8" |
| ■ Fan Weight: | 7 lbs |

- Ultra silent with high performance
- Perfect for ceiling mounting



COMPACT
SERIES



ODD-110-1

110 CFM Next Generation Single Speed
Compact Series Fan

| | |
|-----------------------------------|-----------------|
| ■ Static Pressure in inches w.g.: | 0.1 0.25 |
| ■ Air Volume (CFM): | 112 94 |
| ■ Noise (Sones): | 1 1.3 |
| ■ Fan Watts: | 9.8W 10.8W |
| ■ Duct Diameter: | 4" |
| ■ Power: | 120V/60Hz |
| ■ Housing Size: | 9"x9"x5-3/4" |
| ■ Grille Dimensions: | 11-7/8"x11-3/8" |
| ■ Speed: | 110 CFM |

- Hanger bars not included - Sold separately
- Known for its high efficiency and long lasting reliability



NEXT GEN
SERIES



ODDE-50ES

Advanced Next Generation Fans With
DC Motor Technology

| | |
|-----------------------------------|----------------------|
| ■ Static Pressure in inches w.g.: | 0.1 0.25 |
| ■ Air Volume (CFM): | 50 39 |
| ■ Noise (Sones): | 2.0 N/A |
| ■ Fan Watts: | 7W 8W |
| ■ Duct Diameter: | 3" |
| ■ Power: | 120V/60Hz |
| ■ Housing Size: | 7-1/4"x7-1/2"x3-5/8" |
| ■ Grille Dimensions: | 7-1/2"x7-1/4" |

OPTIONAL - LED Light Grille

- Can be ceiling or wall mounted and capable of exhausting air quietly and efficiently



NEXT GEN
SERIES



ODDE-70

Advanced Next Generation Fans With
DC Motor Technology

| | |
|-----------------------------------|----------------------|
| ■ Static Pressure in inches w.g.: | 0.1 |
| ■ Air Volume (CFM): | 70 |
| ■ Noise (Sones): | 3.0 |
| ■ Fan Watts: | 11W |
| ■ Duct Diameter: | 4" |
| ■ Power: | 120V/60Hz |
| ■ Housing Size: | 7-1/4"x7-1/2"x3-5/8" |
| ■ Grille Dimensions: | 7-1/2"x7-1/4" |

- Can be ceiling or wall mounted and capable of exhausting air quietly and efficiently

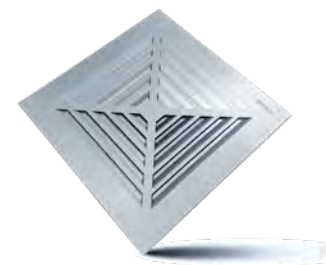
WHERE FUNCTION MEETS FASHION

ORTECH's bathroom fan grilles are the perfect accessory for upgrading your ventilation system. Designed to complement both AC and DC motor bathroom fans, these grilles blend functionality with style, ensuring that your bathroom stays fresh and inviting. With a sleek design, they effortlessly fit into any décor while providing optimal airflow to eliminate odors and moisture.

Crafted from high-quality materials, **ORTECH's** grilles are built to last. They feature a durable finish that resists corrosion and wear, ensuring long-term performance in the humid bathroom environment. Installation is a breeze, allowing you to quickly upgrade your existing setup or complete a new installation with ease.

Beyond just aesthetics, these grilles play a vital role in improving indoor air quality. By effectively directing airflow, they help reduce humidity levels and prevent the buildup of mold and mildew.

FOR AC & DC
MOTOR FANS



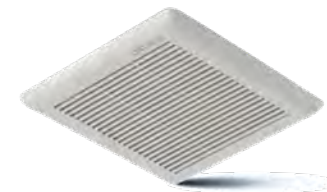
OD-ALG

- Size: 13"x13"
- Colour: Brushed Nickel Finish

COMPATIBLE FANS

ODD-110, ODD-110-18PB, OD45-9005PB, OD45-1109PB, OD-9005PB, OD-1109PB, OD-1209PB, OD-1505PB

*Torsion springs included for easy installation



OD-G0809

- Size: 9"x9-1/2"
- Colour: White

COMPATIBLE FANS

ODE-5004, ODE-8007, ODE-9010

*Torsion springs included for easy installation



OD-G1010

- Size: 10-1/4"x10-1/4"
- Colour: White

COMPATIBLE FANS

ODD30-8010

*Torsion springs included for easy installation



OD-G1111

- Size: 11-7/8"x11-3/8"
- Colour: White

COMPATIBLE FANS

ODC-1109, ODC-8003, ODC-9006

*Torsion springs included for easy installation



OD-G1314

- Size: 13-1/8"x14"
- Colour: White

COMPATIBLE FANS

ODD-110, ODD-110-18PB, OD45-9005PB, OD45-1109PB, OD-9005PB, OD-1109PB, OD-1209PB, OD-1505PB

*Torsion springs included for easy installation



OD-STG

- Size: 13-1/8"x14"
- Colour: White

COMPATIBLE FANS

ODD-110, ODD-110-18PB, OD45-9005PB, OD45-1109PB, OD-9005PB, OD-1109PB, OD-1209PB, OD-1505PB, ODDSS-100-3, ODDSS-100-3HS

*Torsion springs included for easy installation



OD-LLG

- Size: 11-7/16"x11-13/16"
- Colour: White
- Wattage | Lumens: 11W | 800 lmn
- Colour Temp.: 4200K

COMPATIBLE FANS

ODD-110S, ODD-110HS, ODD-110HS+MS, ODC-1109, ODC-8003, ODC-9006

*Torsion springs included for easy installation



OD-LLG-MS

- Size: 11-7/16"x11-13/16"
- Colour: White
- Wattage | Lumens: 11W | 350 lmn
- Colour Temp.: 4200K

COMPATIBLE FANS

ODD-110S, ODD-110HS, ODD-110HS+MS, ODC-1109, ODC-8003, ODC-9006

* LED light with motion sensor & torsion springs



OD-LTG

- Size: 13-1/8"x14"
- Colour: White
- Wattage: Max. 26W
- Base Socket: E26 base

COMPATIBLE FANS

ODD-110, ODD-110-18PB, OD-9005PB, OD-1109PB, OD-1209PB, OD-1505PB

* Comes with Night Kit and Night Light



OD-LTGLED

- Size: 13-1/8"x14"
- Colour: White
- Wattage: 3W
- Night Wattage: 13W
- Lumens: 900 lmn
- Colour Temp.: 4000K

COMPATIBLE FANS

ODD-110, ODD-110-18PB, OD45-9005PB, OD45-1109PB, OD-9005PB, OD-1109PB, OD-1209PB, OD-1505PB

*Torsion springs included for easy installation





OD-DC1010LEDMSG

- Size: 10"x10-1/4"
- Colour: White
- Wattage: 11W
- Night Wattage: 2W
- Lumens: 960 lmn
- Night Lumens: 220 lmn
- Colour Temp.: 4000K

COMPATIBLE FANS

ODD30-8010

*Torsion springs included for easy installation



OD-DCLEDMSG

- Size: 13-1/8"x14"
- Colour: White
- Wattage: 11W
- Night Wattage: 2W
- Lumens: 960 lmn
- Night Lumens: 220 lmn
- Colour Temp.: 4000K

COMPATIBLE FANS

ODD-110, ODD-110-18PB

*Torsion springs included for easy installation



ODE-LLG

- Size: 8-7/16"x9-3/4"
- Colour: White
- Wattage: 11W
- Lumens: 1000 lmn
- Colour Temp.: 4200K

COMPATIBLE FANS

ODE-5004, ODE-8007, ODE-9010

*Torsion springs included for easy installation



BOOST THE POWER OF YOUR DRYER

ORTECH's Dryer Booster Fans are designed to enhance the efficiency of residential and commercial dryer systems by improving airflow. These fans help reduce drying time, prevent lint build-up, and minimize the risk of dryer overheating by boosting the ventilation in long duct runs. The compact and energy-efficient design ensures seamless integration into your existing HVAC setup, making it a reliable choice for maintaining dryer performance while extending its lifespan.



DRYER BOOSTER
FANS

3YR WARRANTY



SDF200

5" Single Intake Dryer Booster Fan For Ceiling And Wall Mounting

- Amps (FLA): 0.9
- Fan Speed (RPM): 2600
- Noise (Sones): 2.5
- Intake: 5"
- Discharge: 5"
- Power: 120V/60Hz
- Fan Dimensions: 10-1/2"x11"x6"
- Fan Weight: 12 lbs

SMOOTH & QUIET OPERATION

- Built-in back draft damper
- Comes with a built-in overload disconnect for safety & longer motor life

| Model | 0.1 SP | 0.2 SP | 0.3 SP | 0.4 SP | 0.5 SP | 0.6 SP | 0.7 SP | 0.8 SP | 0.9 SP | 1.0 SP |
|--------|--------|--------|--------|--------|--------|--------|--------|--------|--------|--------|
| SDF200 | 206CFM | 203CFM | 196CFM | 190CFM | 183CFM | 176CFM | 168CFM | 160CFM | 153CFM | 144CFM |



DRYER BOOSTER
FANS

3YR WARRANTY



SDF200-2

4" Dual Intake Dryer Booster Fan For Ceiling And Wall Mounting

- Amps (FLA): 0.9
- Fan Speed (RPM): 2600
- Noise (Sones): 2.5
- Intake: 4"
- Discharge: 5"
- Power: 120V/60Hz
- Fan Dimensions: 10-1/2"x11"x6"
- Fan Weight: 12 lbs

DOUBLE INLET COLLARS

- Built-in back draft damper
- Comes with a built-in overload disconnect for safety & longer motor life

| Model | 0.1 SP | 0.2 SP | 0.3 SP | 0.4 SP | 0.5 SP | 0.6 SP | 0.7 SP | 0.8 SP | 0.9 SP | 1.0 SP |
|----------|--------|--------|--------|--------|--------|--------|--------|--------|--------|--------|
| SDF200-2 | 235CFM | 222CFM | 211CFM | 205CFM | 195CFM | 186CFM | 175CFM | 169CFM | 158CFM | 150CFM |

ENHANCED COMFORT AND EFFICIENCY

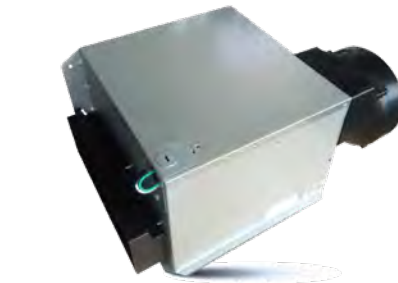
The **ORTECH ODDIN** Universal Series Inline Fans are designed to provide efficient and continuous ventilation with unmatched convenience. Featuring a built-in low-speed controller, these fans are engineered to run 24/7, ensuring that local building code requirements for continuous air circulation are easily met. This makes them ideal for both residential and commercial environments where constant airflow is essential.

One of the standout features is the built-in time delay, allowing the fan to keep running for an additional minutes after being turned off. This delay ensures complete ventilation, further enhancing air quality and energy efficiency. Whether you're managing moisture or odors, this feature offers customized control for any space.

Capable of ceiling or wall mounting, these inline fans are designed for quiet, discreet operation.



ODDIN SERIES



UNIVERSAL SERIES

5YR WARRANTY



SUPREME SERIES

5YR WARRANTY



SUPREME SERIES

5YR WARRANTY



ODDIN-110

90 to 140 CFM Universal Series Inline Fan With 6" Detachable Metal Collar

- Static Pressure in inches w.g.: 0.1 | 0.25, 0.1 | 0.25, 0.1 | 0.25
- Air Volume (CFM): 90 | 73, 110 | 100, 120 | 110, 140 | 125
- Noise (Sones): 0.5, 0.9, 1.2, 1.6
- Fan Watts: 8.1W, 10.3W, 12.2W, 15.6W
- Duct Diameter: 6"
- Power: 120V/60Hz
- Housing Size: 11-5/6"x10-1/2"x7-3/4"
- Intake Dimensions: 10"x3-1/4"
- Fan Weight: 10.5 lbs
- When the fan is turned off, it has a built-in time delay that can be set between 3 to 30 minutes

ODDIN-300-3

3 Speed 220 to 340 CFM Supreme Series Fan with 8" Diameter Metal Duct

- Static Pressure in inches w.g.: 0.2, 0.2, 0.2
- Air Volume (CFM): 340, 310, 220
- Noise (Sones): 5.8, 4.6, 3.1
- Fan Watts: 99W, 79W, 37W
- Duct Diameter: 8"
- Power: 120V/60Hz
- Housing Size: 14-1/8"x14-1/8"x9"
- Intake Dimensions: 10"x3"

- Built-in 3 speed switch
- Fan should be remote mounted and is capable of exhausting or supplying air quietly & efficiently

ODDIN-500-4

4 Speed 200 to 500 CFM Supreme Series Fan with 8" Diameter Metal Duct

- Static Pressure in inches w.g.: 0.1 | 0.25, 0.1 | 0.25, 0.1 | 0.25
- Air Volume (CFM): 202 | 153, 302 | 251, 401 | 336, 504 | 445
- Noise (Sones): 0.4 | 1.4, 1.4 | 1.9, 2.8 | 2.9, 4.6 | 5.7
- Fan Watts: 12W | 18W, 22W | 27W, 38W | 41W, 66W | 70W
- Duct Diameter: 8"
- Power: 120V/60Hz
- Housing Size: 14-1/8"x14-1/8"x9"
- Intake Dimensions: 10"x3"
- Fan should be remote mounted and is capable of exhausting or supplying air quietly & efficiently



STAY COOL, STAY QUIET

The **ORTECH OIF Series** Inline Fans are designed for both commercial and residential applications, offering speed controllable functionality to meet varying airflow needs. Featuring a robust construction with painted cold-rolled steel housing, these fans are built for durability and performance. They excel in high static pressure applications, ensuring effective air circulation in challenging environments.



OIF SERIES
INLINE FANS

3YR WARRANTY

UL LISTED HVI CERTIFIED ENERGY STAR Intertek

OIF4-140

**4" Duct Commercial / Residential Grade
100% Speed Controllable Inline Fan**

- Current (Amp): **0.80**
- Fan Speed (RPM): **2450**
- Noise (Sones): **2.1**
- Wattage: **92W**
- Duct Diameter: **4"**
- Power: **120V/60Hz**
- Room Size Capacity: **100-150 ft²**

EFFICIENT & QUIET OPERATION

- Includes permanently lubricated ball bearings that are maintenance free
- Complies with CSA C22.2 No.113 standard clause 12 for Dryer Exhaust Duct Power Ventilators



OIF SERIES
INLINE FANS

3YR WARRANTY

UL LISTED HVI CERTIFIED ENERGY STAR Intertek

OIF5-190

**5" Duct Commercial / Residential Grade
100% Speed Controllable Inline Fan**

- Current (Amp): **0.86**
- Fan Speed (RPM): **2420**
- Noise (Sones): **2.6**
- Wattage: **102W**
- Duct Diameter: **5"**
- Power: **120V/60Hz**
- Room Size Capacity: **150-200 ft²**

EFFICIENT & QUIET OPERATION

- Includes permanently lubricated ball bearings that are maintenance free
- Complies with CSA C22.2 No.113 standard clause 12 for Dryer Exhaust Duct Power Ventilators



OIF SERIES
INLINE FANS

3YR WARRANTY

UL LISTED HVI CERTIFIED ENERGY STAR Intertek

OIF6-260

**6" Duct Commercial / Residential Grade
100% Speed Controllable Inline Fan**

- Current (Amp): **0.88**
- Fan Speed (RPM): **2620**
- Noise (Sones): **2.8**
- Wattage: **105W**
- Duct Diameter: **6"**
- Power: **120V/60Hz**
- Room Size Capacity: **200-280 ft²**

EFFICIENT & QUIET OPERATION

- Includes permanently lubricated ball bearings that are maintenance free
- Complies with CSA C22.2 No.113 standard clause 12 for Dryer Exhaust Duct Power Ventilators



OIF SERIES
INLINE FANS

3YR WARRANTY

UL LISTED HVI CERTIFIED ENERGY STAR Intertek

OIF10-670

**10" Duct Commercial / Residential Grade
100% Speed Controllable Inline Fan**

- Current (Amp): **1.88**
- Fan Speed (RPM): **2660**
- Noise (Sones): **4.4**
- Wattage: **220W**
- Duct Diameter: **10"**
- Power: **120V/60Hz**
- Room Size Capacity: **580-680 ft²**

EFFICIENT & QUIET OPERATION

- Includes permanently lubricated ball bearings that are maintenance free
- Complies with CSA C22.2 No.113 standard clause 12 for Dryer Exhaust Duct Power Ventilators



OIF SERIES
INLINE FANS

3YR WARRANTY

UL LISTED HVI CERTIFIED ENERGY STAR Intertek

OIF8-560

**8" Duct Commercial / Residential Grade
100% Speed Controllable Inline Fan**

- Current (Amp): **2.03**
- Fan Speed (RPM): **2530**
- Noise (Sones): **3.7**
- Wattage: **235W**
- Duct Diameter: **8"**
- Power: **120V/60Hz**
- Room Size Capacity: **400-580 ft²**

EFFICIENT & QUIET OPERATION

- Includes permanently lubricated ball bearings that are maintenance free
- Complies with CSA C22.2 No.113 standard clause 12 for Dryer Exhaust Duct Power Ventilators



OIF SERIES
INLINE FANS

3YR WARRANTY

UL LISTED HVI CERTIFIED ENERGY STAR Intertek

OIF12-880

**12" Duct Commercial / Residential Grade
100% Speed Controllable Inline Fan**

- Current (Amp): **1.80**
- Fan Speed (RPM): **2730**
- Noise (Sones): **5.0**
- Wattage: **210W**
- Duct Diameter: **12"**
- Power: **120V/60Hz**
- Room Size Capacity: **680-780 ft²**

EFFICIENT & QUIET OPERATION

- Includes permanently lubricated ball bearings that are maintenance free
- Complies with CSA C22.2 No.113 standard clause 12 for Dryer Exhaust Duct Power Ventilators

| Model | 0 SP | 0.1 SP | 0.2 SP | 0.25 SP | 0.3 SP | 0.4 SP | 0.5 SP | 0.6 SP | 0.7 SP | 0.8 SP | 0.9 SP | 1.0 SP | 1.2 SP | 1.4 SP | 1.5 SP | 1.6 SP | 2.0 SP | 2.5 SP |
|-----------|--------|--------|--------|---------|--------|--------|--------|--------|--------|--------|--------|--------|--------|--------|--------|--------|--------|--------|
| OIF4-140 | 152CFM | 147CFM | 144CFM | 135CFM | 132CFM | 123CFM | 120CFM | 111CFM | 108CFM | 100CFM | 94CFM | 88CFM | 73CFM | 70CFM | 43CFM | 26CFM | - | - |
| OIF5-190 | 214CFM | 200CFM | 188CFM | 182CFM | 176CFM | 164CFM | 155CFM | 141CFM | 129CFM | 120CFM | 105CFM | 100CFM | 79CFM | 61CFM | 47CFM | 32CFM | - | - |
| OIF6-260 | 282CFM | 276CFM | 264CFM | 255CFM | 250CFM | 232CFM | 208CFM | 182CFM | 161CFM | 150CFM | 141CFM | 132CFM | 108CFM | 79CFM | 58CFM | 35CFM | - | - |
| OIF8-560 | 605CFM | 588CFM | 582CFM | 558CFM | 500CFM | 494CFM | 452CFM | 423CFM | 382CFM | 352CFM | 329CFM | 294CFM | 263CFM | 238CFM | 217CFM | 200CFM | 141CFM | 47CFM |
| OIF10-670 | 647CFM | 629CFM | 570CFM | 538CFM | 520CFM | 482CFM | 470CFM | 450CFM | 429CFM | 411CFM | 388CFM | 352CFM | 545CFM | 480CFM | 252CFM | 241CFM | 176CFM | 94CFM |
| OIF12-880 | 911CFM | 882CFM | 870CFM | 832CFM | 794CFM | 735CFM | 676CFM | 641CFM | 594CFM | 547CFM | 488CFM | 417CFM | 615CFM | 520CFM | 282CFM | 261CFM | 176CFM | 47CFM |

MAXIMIZE AIRFLOW, MINIMIZE ENERGY

The **ORTECH ODDMF Series** Inline Fans feature advanced mixed flow technology, offering a combination of inline fans and mixed flow silencers designed for optimal air movement. These fans utilize cutting-edge brushless EC motors equipped with Hall IC technology, ensuring reliable performance and precision control.

One of the standout features of the ODDMF Series is its remarkable energy efficiency. These fans operate at significantly lower power consumption levels compared to average fans, making them an environmentally friendly choice while reducing operational costs. The innovative design promotes quiet operation, enhancing comfort in both residential and commercial spaces.

Constructed with durable aluminum housing and a jet-engine design that incorporates double impellers, the ODDMF fans provide stable performance that is free from vibrations.



**ODDMF
SERIES**



MIXED FLOW
INLINE FAN

5YR WARRANTY



ODDMF-4-160

4" Compact Size Mixed Flow Inline Fan
With Cutting Edge Brushless EC Motor

- Max. Speed: 5000 RPM
- Air Volume (CFM): 160
- Static Pressure: 1.34 in H₂O | 334 Pa
- Noise: 56.8 dBA
- Max. Power: 18W
- IP Rating: IP 64 (IP 68 available)
- Fan Weight: 2.4 lbs

■ 4-poles brushless motor with hall IC

■ Built with aluminum housing & jet-engine design double impellers

■ Can work under much lower power consumption than average fans



MIXED FLOW
INLINE FAN

5YR WARRANTY



ODDMF-6-350

6" Compact Size Mixed Flow Inline Fan
With Cutting Edge Brushless EC Motor

- Max. Speed: 5000 RPM
- Air Volume (CFM): 350
- Static Pressure: 2.01 in H₂O | 500 Pa
- Noise: 60 dBA
- Max. Power: 40W
- IP Rating: IP 64 (IP 68 available)
- Fan Weight: 3.5 lbs

■ 6-poles brushless motor with hall IC

■ Built with aluminum housing & jet-engine design double impellers

■ Can work under much lower power consumption than average fans



MIXED FLOW
INLINE FAN

5YR WARRANTY



ODDMF-5-170

5" Compact Size Mixed Flow Inline Fan
With Cutting Edge Brushless EC Motor

- Max. Speed: 5000 RPM
- Air Volume (CFM): 166
- Static Pressure: 1.46 in H₂O | 363 Pa
- Noise: 54.4 dBA
- Max. Power: 20W
- IP Rating: IP 64 (IP 68 available)
- Fan Weight: 2.4 lbs

■ 4-poles brushless motor with hall IC

■ Built with aluminum housing & jet-engine design double impellers

■ Can work under much lower power consumption than average fans



MIXED FLOW
INLINE FAN

5YR WARRANTY



ODDMF-8-710

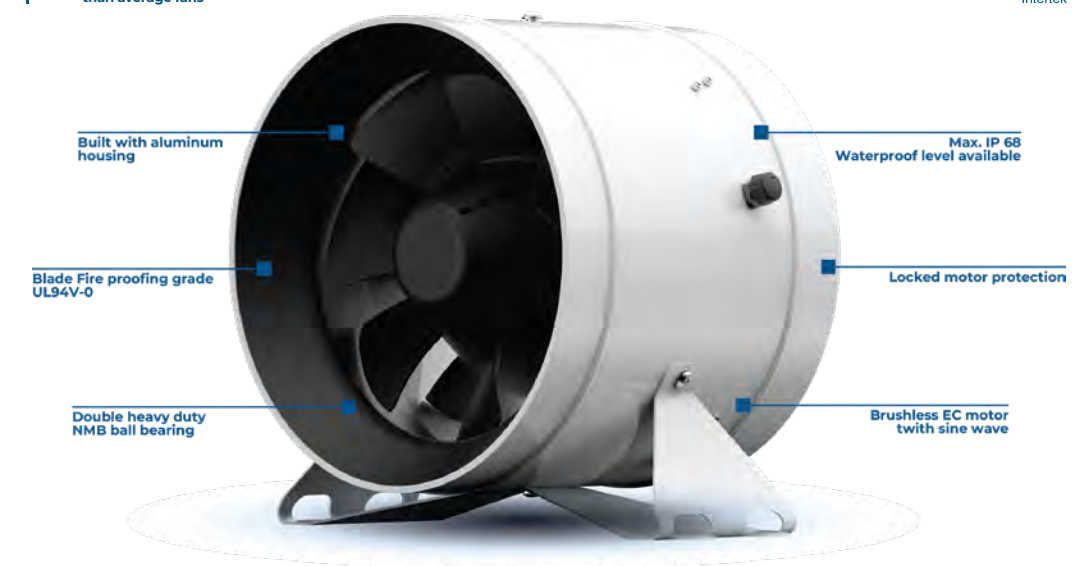
8" Compact Size Mixed Flow Inline Fan
With Cutting Edge Brushless EC Motor

- Max. Speed: 3800 RPM
- Air Volume (CFM): 710
- Static Pressure: 2.09 in H₂O | 520 Pa
- Noise: 61.6 dBA
- Max. Power: 75W
- IP Rating: IP 64 (IP 68 available)
- Fan Weight: 5.5 lbs

■ 6-poles brushless motor with hall IC

■ Built with aluminum housing & jet-engine design double impellers

■ Can work under much lower power consumption than average fans





MIXED FLOW
INLINE FAN

5YR WARRANTY

ODDMF-10-1070

10" Compact Size Mixed Flow Inline Fan With Cutting Edge Brushless EC Motor

- Max. Speed: **3200 RPM**
- Air Volume (CFM): **1065**
- Static Pressure: **2.05 in H₂O | 510 Pa**
- Noise: **65 dBA**
- Max. Power: **150W**
- IP Rating: **IP 64** (IP 68 available)
- Fan Weight: **6.6 lbs**

- 6-poles brushless motor with hall IC
- Built with aluminum housing & jet-engine design double impellers
- Can work under much lower power consumption than average fans



MIXED FLOW
INLINE FAN

5YR WARRANTY

ODDMF-12-1760

12" Compact Size Mixed Flow Inline Fan With Cutting Edge Brushless EC Motor

- Max. Speed: **2800 RPM**
- Air Volume (CFM): **1640**
- Static Pressure: **2.40 in H₂O | 598 Pa**
- Noise: **70 dBA**
- Max. Power: **260W**
- IP Rating: **IP 64** (IP 68 available)
- Fan Weight: **18.7 lbs**

- 6-poles brushless motor with hall IC
- Built with aluminum housing & jet-engine design double impellers
- Can work under much lower power consumption than average fans



MIXED FLOW
SILENCER

5YR WARRANTY

ODDMF-6-350-Q

Silenced Version Of ODDMF Inline Fans, Constructed With A 6" Inline Fan

- Max. Speed: **5000 RPM**
- Air Volume (CFM): **350**
- Static Pressure: **2.01 in H₂O | 500 Pa**
- Noise: **50 dBA**
- Max. Power: **40W**
- IP Rating: **IP 64** (IP 68 available)
- Fan Weight: **11 lbs**

- 6-poles brushless motor with sine wave
- Stable and free from vibrations
- Built with cold-rolled steel housing and aluminum flange



MIXED FLOW
SILENCER

5YR WARRANTY

ODDMF-8-710-Q

Silenced Version Of ODDMF Inline Fans, Constructed With A 8" Inline Fan

- Max. Speed: **3800 RPM**
- Air Volume (CFM): **710**
- Static Pressure: **2.09 in H₂O | 500 Pa**
- Noise: **51 dBA**
- Max. Power: **75W**
- IP Rating: **IP 64** (IP 68 available)
- Fan Weight: **16.5 lbs**

- 6-poles brushless motor with sine wave
- Stable and free from vibrations
- Built with cold-rolled steel housing and aluminum flange

ACCESSORIES (INCLUDED)



SPEED CONTROLLER
3.5MM CONNECTION JACK



DIY 4-PINS CONTROL



SLIM3-RINGVB VINTAGE BRASS

ACCESSORIES (SOLD SEPARATELY)



WALL MOUNTED CONTROLLER



ODDMF-ST SMART CONTROLLER WITH PROBE



ADAPTER TO OTHER 3 PIN CONTROLLER



WIRELESS REMOTE WITH RECEIVER



ADAPTER TO OTHER RJ45 CONTROLLERS



3.5MM TRRS JACK EXTENSION CONTROL CABLE

| Model | 0 SP | 0.10 SP | 0.20 SP | 0.30 SP | 0.40 SP | 0.50 SP | 0.60 SP | 0.80 SP | 0.90 SP | 1.00 SP |
|-------------|--------|---------|---------|---------|---------|---------|---------|---------|---------|---------|
| ODDMF-4-160 | 152CFM | 141CFM | 126CFM | 111CFM | 96CFM | 85CFM | 70CFM | 33CFM | 18CFM | 0CFM |

| Model | 0 SP | 0.10 SP | 0.20 SP | 0.30 SP | 0.40 SP | 0.52 SP | 0.64 SP | 0.76 SP | 0.90 SP | 1.10 SP |
|-------------|--------|---------|---------|---------|---------|---------|---------|---------|---------|---------|
| ODDMF-5-160 | 222CFM | 200CFM | 181CFM | 161CFM | 139CFM | 118CFM | 93CFM | 69CFM | 41CFM | 0CFM |

| Model | 0 SP | 0.10 SP | 0.20 SP | 0.30 SP | 0.40 SP | 0.60 SP | 0.80 SP | 1.00 SP | 1.10 SP | 1.30 SP |
|-------------|--------|---------|---------|---------|---------|---------|---------|---------|---------|---------|
| ODDMF-6-160 | 238CFM | 221CFM | 199CFM | 175CFM | 155CFM | 119CFM | 85CFM | 44CFM | 19CFM | 0CFM |

| Model | 0 SP | 0.20 SP | 0.40 SP | 0.60 SP | 0.80 SP | 1.00 SP | 1.20 SP | 1.44 SP | 1.64 SP | 1.72 SP |
|-------------|--------|---------|---------|---------|---------|---------|---------|---------|---------|---------|
| ODDMF-8-160 | 425CFM | 383CFM | 345CFM | 303CFM | 259CFM | 220CFM | 172CFM | 110CFM | 49CFM | 0CFM |

| Model | 0 SP | 0.20 SP | 0.40 SP | 0.60 SP | 0.80 SP | 1.00 SP | 1.30 SP | 1.68 SP | 1.92 SP | 2.50 SP |
|--------------|--------|---------|---------|---------|---------|---------|---------|---------|---------|---------|
| ODDMF-10-160 | 566CFM | 513CFM | 457CFM | 396CFM | 333CFM | 274CFM | 210CFM | 139CFM | 95CFM | 0CFM |

| Model | 0 SP | 0.20 SP | 0.40 SP | 0.60 SP | 0.80 SP | 1.00 SP | 1.45 SP | 2.00 SP | 2.40 SP | 3.00 SP |
|--------------|--------|---------|---------|---------|---------|---------|---------|---------|---------|---------|
| ODDMF-12-160 | 767CFM | 682CFM | 566CFM | 413CFM | 300CFM | 238CFM | 173CFM | 92CFM | 53CFM | 0CFM |

ACCESSORIES (INCLUDED)



WALL MOUNTED CONTROLLER



SPEED CONTROLLER
3.5MM CONNECTION JACK



DIY 4-PINS CONTROL



SLIM3-RINGVB VINTAGE BRASS

ACCESSORIES (SOLD SEPARATELY)



ODDMF-ST SMART CONTROLLER WITH PROBE



ADAPTER TO OTHER 3 PIN CONTROLLER



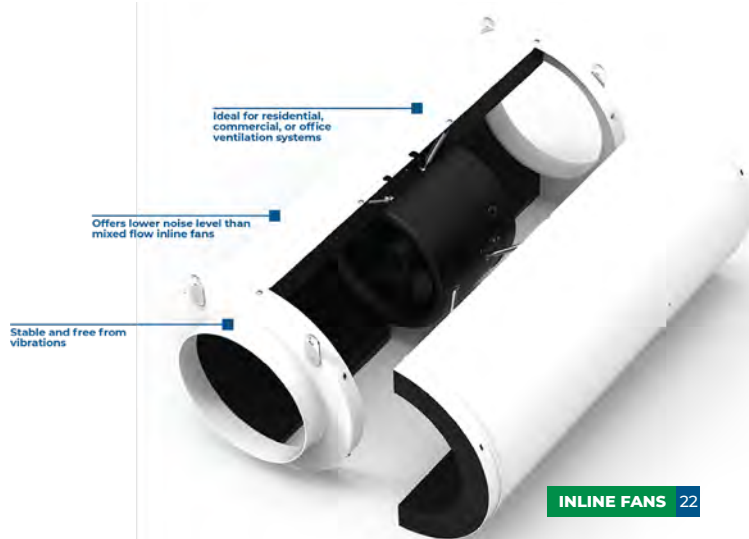
WIRELESS REMOTE WITH RECEIVER



ADAPTER TO OTHER RJ45 CONTROLLERS



3.5MM TRRS JACK EXTENSION CONTROL CABLE



INFUSE NATURE INTO YOUR SPACE

ORTECH's Energy Recovery Ventilators (ERVs) are designed to enhance indoor air quality by exchanging stale indoor air with fresh outdoor air while recovering energy from the exhaust air. The ERVs capture both heat and moisture, making them ideal for balancing humidity levels and maintaining a comfortable, healthy living environment. This technology is especially beneficial in energy-efficient homes that are tightly sealed, where proper ventilation is crucial for preventing air quality issues.

A standout feature of ORTECH's ERVs is their energy-saving capability. By recovering up to 87% of the energy from the exhaust air, these ventilators reduce the heating and cooling load on HVAC systems, leading to lower energy consumption and cost savings. They work effectively in different climates, helping to control excess moisture in humid regions and preventing indoor air from becoming too dry in colder areas. The units are versatile and can be installed in residential or light commercial settings.



5YR WARRANTY



OD-ERV 150AC

Energy Recovery Ventilator With Efficient Cross-flow Core & Pressure Ports for air balancing

- Has 6" duct connections and 6 ft power cord
- MERV 6 filters standard with MERV 13 option for OA stream
- 30-100% speed control built-in for OA and RA air-streams for balancing and reducing airflow per requirement
- Efficient cross-flow core and pressure ports for airflow balancing
- Temperature sensor to limit operation during very low temperatures
- Run time per hour at low speed setting, 0-60 min per hour (ASHRAE 62.2)
- Auto-reset thermal overload protection on motors and no drain pan or hose required
- CSA standard C439-18 compliant

OPTIONAL

Manual override switch (MOS) can be used in conjunction with a powered wall mounted delay timer, using a plug-in relay (not included), to boost the unit into high-speed operation for specified time.

| Airflow (CFM) | ESP (in w.g.) | | Estimated HVI | | Power | | Speed |
|---------------|---------------|------|---------------|------|-------|-------|---------|
| | FA | RA | SRE | ASRE | Watts | CFM/W | |
| 125 | 0.40 | 0.43 | 46 | 52 | 125 | 1.00 | High |
| 22 | 0.40 | 0.40 | 68 | 80 | 38 | 0.58 | Minimum |
| 55 | 0.10 | 0.10 | 62 | 67 | 39 | 1.41 | Low |

| Speed Setting | Airflow (CFM) | Sones |
|---------------|---------------|-------|
| High | 125 | 4.8 |
| Low | 55 | 2.1 |
| Minimum | 22 | 2.4 |



5YR WARRANTY

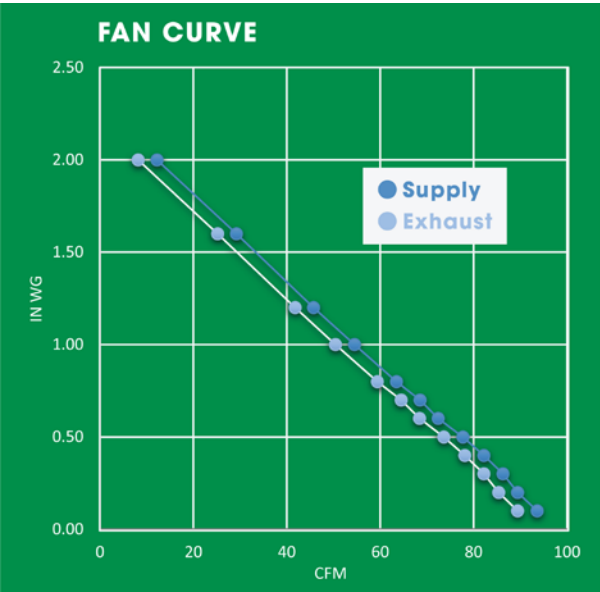


ODD-ERV-80 | ODD-ERV-80R

Energy Recovery Ventilator With Efficient Cross-flow Core

- Super Compact Size: 22 ³/₄ x 21 ³/₃₂ x 8 ⁹/₁₆ inches
- Mirrored: Mirrored unit available for identical but mirrored suites
- Brings a continuous supply of fresh air into the home while exhausting contaminated air
- Includes easy-mount bracket and easy access service door
- Insulation: Cabinet is fully insulated with high density expanded polystyrene
- Filter: Two (2) washable primary air filters
- Four (4) feet long 110V Electric Cord Standard (Removable for hard wiring)
- CSA standard C439-18 compliant

- Efficiency (SRE): 76.9% @ 43.4CFM
- Airflow: 87CFM @ 0.25"wg
- Voltage: 120V / 1Ph / 60Hz
- Wattage: 57W
- Amp: 0.80A
- Fans: 2 EC centrifugal fans
- Duct Size: 5"
- Weight: 52 lbs



DEFROST FUNCTION

Integrated dampers allow seamless defrosting to prevent the energy recovery core from freezing in cold weather in order to maintain high energy efficiency. Normal operation switches to defrost mode automatically based on outdoor conditions. The default defrost mode is exhaust only.

ACCESSORIES (SOLD SEPARATELY)



TIMER



SCREEN CONTROLLER

| Heating | Supply Temp. | | Net Airflow | Average Power | Sensible Recovery Efficiency (SRE) | Adjusted Sensible Recovery Efficiency (ASRE) | Apparent Sensible Effectiveness | Net Moisture Transfer |
|---------|--------------|------|-------------|---------------|------------------------------------|--|---------------------------------|-----------------------|
| I | 0°C | 32°F | 43.4CFM | 42W | 76.9 | 83.7 | 86.0 | 0.67 |
| II | 0°C | 32°F | 54CFM | 38W | 74.7 | 79.7 | 81.6 | 0.62 |
| III | 0°C | 32°F | 64.4CFM | 34W | 72.5 | 76.1 | 78.1 | 0.57 |

| Cooling | Supply Temp. | | Net Airflow | Average Power | Sensible Recovery Efficiency (SRE) | Adjusted Sensible Recovery Efficiency (ASRE) | Apparent Sensible Effectiveness | Net Moisture Transfer |
|---------|--------------|------|-------------|---------------|------------------------------------|--|---------------------------------|-----------------------|
| I | 35°C | 95°F | 43.6CFM | 40W | 70.4 | 69.2 | 77.1 | 0.68 |



5YR WARRANTY

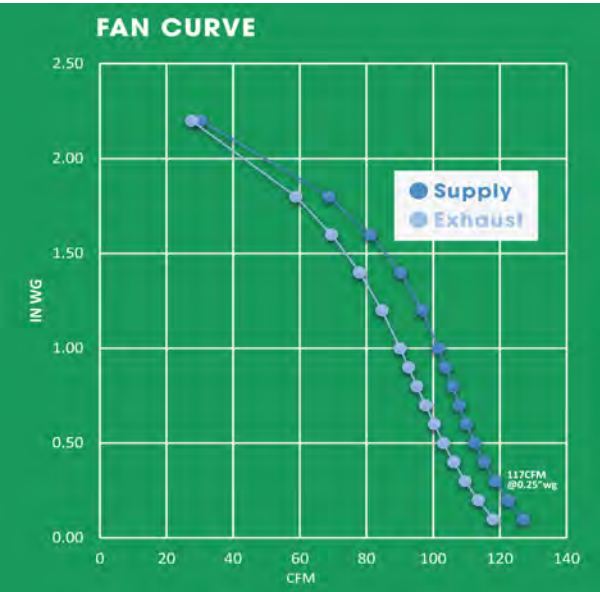


ODD-ERV-120 | ODD-ERV-120R

Energy Recovery Ventilator With Efficient Cross-flow Core

- Super Compact Size: 24 ¹¹/₁₆ x 26 ¹³/₁₆ x 9 ¹¹/₁₆ inches
- Mirrored: Mirrored unit available for identical but mirrored suites
- Brings a continuous supply of fresh air into the home while exhausting contaminated air
- Includes easy-mount bracket and easy access service door
- Insulation: Cabinet is fully insulated with high density expanded polystyrene
- Filter: Two (2) washable primary air filters
- Four (4) feet long 110V Electric Cord Standard (Removable for hard wiring)
- CSA standard C439-18 compliant

- Efficiency (SRE): 76.7% @ 67.8CFM
- Airflow: 117CFM @ 0.25"wg
- Voltage: 120V / 1Ph / 60Hz
- Wattage: 96W
- Amp: 1.32A
- Fans: 2 EC centrifugal fans
- Duct Size: 5"
- Weight: 52 lbs



DEFROST FUNCTION

Integrated dampers allow seamless defrosting to prevent the energy recovery core from freezing in cold weather in order to maintain high energy efficiency. Normal operation switches to defrost mode automatically based on outdoor conditions. The default defrost mode is exhaust only.

ACCESSORIES (SOLD SEPARATELY)



TIMER



SCREEN CONTROLLER

| Heating | Supply Temp. | | Net Airflow | Average Power | Sensible Recovery Efficiency (SRE) | Adjusted Sensible Recovery Efficiency (ASRE) | Apparent Sensible Effectiveness | Net Moisture Transfer |
|---------|--------------|------|-------------|---------------|------------------------------------|--|---------------------------------|-----------------------|
| I | 0°C | 32°F | 67.8CFM | 32W | 76.7 | 80.1 | 82.2 | 0.63 |
| II | 0°C | 32°F | 97.2CFM | 52W | 70.6 | 74.3 | 76.7 | 0.55 |
| III | 0°C | 32°F | 107CFM | 66W | 69.3 | 73.4 | 75.4 | 0.53 |
| IV* | 0°C | 32°F | 53CFM | 24W | 80 | 84 | 86 | - |

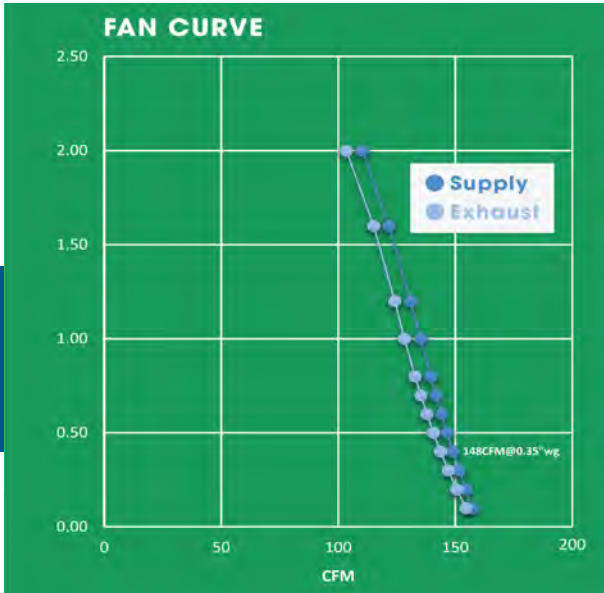
| Cooling | Supply Temp. | | Net Airflow | Average Power | Sensible Recovery Efficiency (SRE) | Adjusted Sensible Recovery Efficiency (ASRE) | Apparent Sensible Effectiveness | Net Moisture Transfer |
|---------|--------------|------|-------------|---------------|------------------------------------|--|---------------------------------|-----------------------|
| I | 35°C | 95°F | 66.1CFM | 32W | 65.9 | 72.2 | 76.9 | 0.64 |



ODD-ERV-150 | ODD-ERV-150R

- Energy Recovery Ventilator With Efficient Cross-flow Core
- Super Compact Size: 24 11/16 x 26 13/16 x 9 11/16 inches
 - Mirrored: Mirrored unit available for identical but mirrored suites
 - Brings a continuous supply of fresh air into the home while exhausting contaminated air
 - Includes easy-mount bracket and easy access service door
 - Insulation: Cabinet is fully insulated with high density expanded polystyrene
 - Filter: Two (2) washable primary air filters
 - Four (4) feet long 110V Electric Cord Standard (Removable for hard wiring)
 - CSA standard C439-18 compliant

- Efficiency (SRE): 71% @ 68.4CFM
- Airflow: 148CFM @ 0.35"wg
- Voltage: 120V / 1Ph / 60Hz
- Wattage: 165W
- Amp: 2.16A
- Fans: 2 EC centrifugal fans
- Duct Size: 5"
- Weight: 57 lbs



DEFROST FUNCTION

Integrated dampers allow seamless defrosting to prevent the energy recovery core from freezing in cold weather in order to maintain high energy efficiency. Normal operation switches to defrost mode automatically based on outdoor conditions. The default defrost mode is exhaust only.

ACCESSORIES (SOLD SEPARATELY)



| Heating | Supply Temp. | | Net Airflow | Average Power | Sensible Recovery Efficiency (SRE) | Adjusted Sensible Recovery Efficiency (ASRE) | Apparent Sensible Effectiveness | Net Moisture Transfer |
|---------|--------------|------|-------------|---------------|------------------------------------|--|---------------------------------|-----------------------|
| I | 0°C | 32°F | 68.4CFM | 27W | 71 | 74 | 76.6 | 0.60 |
| II | 0°C | 32°F | 100.8CFM | 56W | 66 | 70 | 72.4 | 0.55 |
| III | 0°C | 32°F | 148.7CFM | 157W | 61 | 68 | 70 | 0.49 |
| IV* | 0°C | 32°F | 55CFM | - | 75 | 80 | 82 | - |
| Cooling | Supply Temp. | | Net Airflow | Average Power | Sensible Recovery Efficiency (SRE) | Adjusted Sensible Recovery Efficiency (ASRE) | Apparent Sensible Effectiveness | Net Moisture Transfer |
| I | 35°C | 95°F | 67.8CFM | 28W | 62 | 64 | 71.4 | 0.62 |

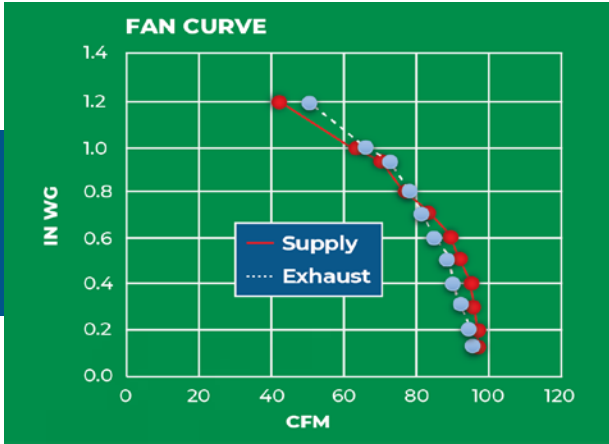
* Data Based On Linear Interpolation



ODD-ERV100EC | ODD-ERV100ECR

- Energy Recovery Ventilator With Ultra Efficient Counter-flow Core
- Enhanced Indoor Air Quality: This air exchange system improves indoor air quality by retaining existing heat and optimizing interior moisture levels
 - Mirrored: Mirrored unit available for identical but mirrored suites
 - Adjustable Airflow: Supply and exhaust airflow can be manually adjusted within a range of 40 to 100 CFM
 - Filter: Two (2) washable primary air filters. MERV 8 & 13 optional
 - Built-in Humidity Control: Includes a humidity sensor to automatically maintain optimal indoor moisture levels for comfort
 - Super Compact Size: 22 1/8 x 35 9/10 x 9 inches
 - Certified Performance: Compliant with CSA Standard C439-18 for trusted energy recovery performance.

- Efficiency (SRE): 87% @ 48CFM
- Airflow: 98.8CFM @ 0.2"wg
- Voltage: 120V / 1Ph / 60Hz
- Wattage: 61.8W
- Amp: 0.52A
- Fans: EC motor
- Duct Size: 6"
- Weight: 42 lbs



DEFROST FUNCTION

Integrated dampers allow seamless defrosting to prevent the energy recovery core from freezing in cold weather in order to maintain high energy efficiency. Normal operation switches to defrost mode automatically based on outdoor conditions. The default defrost mode is recirculation.

ACCESSORIES (SOLD SEPARATELY)



| Heating | Supply Temp. | | Net Airflow | Sensible Recovery Efficiency (SRE) | Adjusted Sensible Recovery Efficiency (ASRE) | Apparent Sensible Effectiveness | Net Moisture Transfer |
|---------|--------------|-------|-------------|------------------------------------|--|---------------------------------|-----------------------|
| I | 0°C | 32°F | 48.5CFM | 87.4 | 90.3 | 92.4 | 0.88 |
| II | 0°C | 32°F | 60.8CFM | 83.7 | 86.6 | 89.1 | 0.83 |
| III | 0°C | 32°F | 81.4CFM | 79.2 | 82.7 | 83.9 | 0.78 |
| IV | -25°C | -13°F | 49.2CFM | 63.6 | 65.8 | 86.3 | 0.61 |
| Cooling | Supply Temp. | | Net Airflow | Sensible Recovery Efficiency (SRE) | Adjusted Sensible Recovery Efficiency (ASRE) | Apparent Sensible Effectiveness | Net Moisture Transfer |
| I | 35°C | 95°F | 47.7CFM | 75.3 | 81.1 | 86.1 | 0.84 |

SIZZLE WITHOUT THE SMOKE

ORTECH's Kitchen Rangehoods are designed to combine powerful ventilation with sleek, modern design, keeping your kitchen smoke-free and stylish. With their high-performance motors, they quickly eliminate cooking odors, smoke, and grease, ensuring a fresh and comfortable cooking environment. The rangehoods come in a variety of designs and finishes, making them a perfect fit for any kitchen style.

In addition to performance, **ORTECH rangehoods** feature user-friendly controls and bright LED lighting to illuminate your cooking space. Their quiet yet efficient operation ensures that you can cook in peace without the disruptive noise of traditional ventilation systems, making them an essential kitchen appliance for both home chefs and casual cooks alike.

Whether it's a quick meal or a dinner party, **ORTECH Kitchen Rangehoods** ensure reliable, efficient ventilation to keep your kitchen clean and fresh.



1YR WARRANTY

COLOUR OPTIONS:
WHITE, BLACK,
STAINLESS STEEL



OD-19040

Powerful 190 High speed CFM 30" Under-Cabinet Kitchen Rangehood Fan

- Wattage: 90W
- Air Volume (CFM): 190 CFM(High Speed)
100 CFM(Low Speed)
- Voltage: 120V/60Hz
- Lighting: 2x40W Incandescent lights, A15 bulb (A19 max size)
- No. Of Motor And Speed: Single | 2 Speed
- Control: Push Button Switch
- Warranty: 1 year | No warranty on the lights

- For outdoor or indoor vented installations (Ducted or non-Ducted)



1YR WARRANTY

COLOUR OPTIONS:
GLOSS WHITE,
SATIN NICKEL



OD-6092

Powerful 390 CFM, 3 Speed Double Motor Rangehood Fan

- Wattage: 180W(Fan)
210W(Motor)
390 CFM
- Air Volume (CFM): 390 CFM
- Voltage: 120V/60Hz
- Material: Stainless Steel
- No. Of Motor And Speed: Double | 3 Speed
- Control: Push Button Built-in
- Warranty: 1 year | No warranty on the lights

- Wall or ceiling mount, with ducted ventilation (Duct size: 6")



1YR WARRANTY

COLOUR OPTIONS:
WHITE,
SATIN NICKEL



OD-RH320

Powerful 320 CFM, 3 Speed 30" Rangehood Fan

- Air Volume (CFM): 320 CFM(High Speed)
220 CFM(Low Speed)
120 CFM(Low Speed)
- Voltage: 120V/60Hz
- Lighting: 2x5W GU10
- No. Of Speed: 3 Speed
- Control: Push Button Built-in
- Warranty: 1 year | No warranty on the lights

- For outdoor or indoor vented installations (Ducted or non-Ducted)
- Includes 2 dishwasher-safe aluminum filters and 1 charcoal filter



1YR WARRANTY

COLOUR OPTIONS:
GLOSS WHITE,
SATIN NICKEL



OD-6091

Powerful 275 CFM, 3 Speed Single Motor Rangehood Fan

- Wattage: 90W(Fan)
180W(Motor)
275 CFM
- Air Volume (CFM): 275 CFM
- Voltage: 120V/60Hz
- Material: Stainless Steel
- No. Of Motor And Speed: Single | 3 Speed
- Control: Push Button Built-in
- Warranty: 1 year | No warranty on the lights

- Wall or ceiling mount, with ducted ventilation (Duct size: 6")



1YR WARRANTY

COLOUR OPTIONS:
STAINLESS STEEL



OD-IRH-500

Powerful 500 CFM, 30" Rangehood Fan Designed To Fit Standard Kitchen Cabinets

- Wattage: 306W (300W motor + 3W bulb)
- Air Volume (CFM): 500 CFM(High Speed)
400 CFM(Low Speed)
300 CFM(Low Speed)
- Voltage: 120V/60Hz
- Lighting: 2xGU10 LED Bulbs
- No. Of Motor And Speed: Single | 3 Speed
- Control: Push Button Built-in
- Warranty: 1 year | No warranty on the lights

- Stainless steel baffle filters to capture grease effectively



1YR WARRANTY

COLOUR OPTIONS:
WHITE, BLACK,
SATIN NICKEL



OD-RH600

Powerful 600 CFM, 3 Speed 30" Under-Cabinet Rangehood Fan

- Air Volume (CFM): 300 CFM(High Speed)
450 CFM(Low Speed)
600 CFM(Low Speed)
- Voltage: 120V/60Hz
- Lighting: Energy-efficient LED
- No. Of Speed: 3 Speed
- Control: Touch control
- Warranty: 1 year | No warranty on the lights

- Includes baffle filters
- Vertical/Horizontal vent option rectangular
- 3-1/4"x10" | Vertical vent option 6" round

FEEL THE HEAT, NOT THE BILL

ORTECH Heaters are designed to provide powerful, efficient heating solutions for a wide range of spaces. Whether you need reliable warmth in residential, commercial, or industrial environments, **ORTECH heaters** deliver consistent heat output while maintaining energy efficiency. Their advanced technology ensures rapid heating, making them perfect for those cold winter months.

With various models, including infrared carbon heaters and electric options, **ORTECH heaters** are built to suit different needs and preferences. They come equipped with features like adjustable thermostats, overheat protection, and multiple safety measures, offering both convenience and peace of mind.

Easy to install and maintain, **ORTECH heaters** are crafted to withstand tough conditions while blending seamlessly into any space. Their sleek, modern designs make them a perfect addition to homes, offices, or workshops, ensuring you stay warm and comfortable year-round.



HS-CH 1500W

Commercial Grade Robut And Waterproof Infrared Carbon Heater With Remote Control

- Wattage: 1500W
- Voltage: 120V AC
- Amps: 13A
- Material: Aluminum, Plastic
- Phase: I
- Rating: Indoor and outdoor use
- Grade Of Protection: IP55
- Coverage Area: 172.2-257.6 ft²
- Control: Timer, Powersetting

- For both ceiling and wall mounting, Produces instant and comfortable heat



HS-CH 2500W

Commercial Grade Robut And Waterproof Infrared Carbon Heater With Remote Control

- Wattage: 2500W
- Voltage: 240V AC
- Amps: 10.5A
- Material: Aluminum, Plastic
- Phase: I
- Rating: Indoor and outdoor use
- Grade Of Protection: IP55
- Coverage Area: 183-279.9 ft²
- Control: ON/OFF switch

- For both ceiling and wall mounting, Produces instant and comfortable heat

APPLICATION

Robust and weatherproof heater designed for commercial and residential heating applications for indoor and outdoor places like: Restaurant / Garden / Stairways / Patios / Decks / Balcony areas / Walkways, etc



HS-1500NA

Powerful Thermoflow Heater with IP65 grade of protection

- Wattage: 1500W
- Voltage: 120V/60Hz
- Protection Class: I
- Rating: Indoor and outdoor use
- Grade Of Protection: IP65
- Weight: 11.5 lbs

- Offers reliable heat while being dust-tight and waterproof, making it ideal for tough environments.



HS-3000NA

Powerful Thermoflow Heater with IP65 grade of protection

- Wattage: 3000W
- Voltage: 240V/60Hz
- Protection Class: I
- Rating: Indoor and outdoor use
- Grade Of Protection: IP65
- Weight: 18.4 lbs

- Offers reliable heat while being dust-tight and waterproof, making it ideal for tough environments.

CONTROL THE AIR, MASTER THE COMFORT

With advanced sensors, speed controllers, and timers, these controls allow for seamless adjustments, ensuring that the temperature, airflow, and energy usage are optimized at all times. Whether it's for residential or commercial spaces, **ORTECH HVAC controls** help maintain a balanced indoor climate with minimal effort.

The inclusion of smart sensors enables real-time feedback, automatically adjusting system performance based on environmental conditions. Speed controllers offer flexible options for adjusting fan speeds, providing the ideal balance between airflow and energy consumption, while the timers ensure the system runs efficiently only when needed, avoiding unnecessary energy use.

Built for convenience and reliability, ORTECH HVAC controls provide a smarter way to manage your indoor comfort.



**AMP
SENSOR**



AS-5 | AS-5 | AS-10 | AS-15

**Amp Sensor With High Current AC Switch
And Dryer Control**

- Time Delay: None | 5 mins | 10 mins | 15 mins
- Output: TRIAC
- Switch V: 120V AC
- Switch I: 2.5 Amps
- Leakage: <1mA
- Input I Min: ~0.5 Amp
- Input I: 50 Amps



- Compatible with Dryer Booster Fans
- Designed to mount in a standard electrical box
- Only two wire connections needed for easy installation

**MOTION
SENSOR**

DWOS

**12 Amps Passive Infrared Sensor With
Ambient Light Level Sensor**

- Voltage: 120V/60Hz
- Resistive: 12A
- Time Delay: 15 sec ~ 30 min
- Light Level: 30 Lux - Daylight
- Motor: 1/4HP
- Operating Temp.: 0°C ~ +55°C

- Has one relay (equal to single pole switch)
- After no motion is detected for the set time delay, the load turns off automatically
- Detects difference between heat emitted from human body in motion & background space

**HUMIDITY
SENSOR**

WM-DWHS

**Humidity And Fan Control Sensor For
Reducing Bathroom Condensation**

- Voltage: 120V/60Hz
- Max. Fan Load: 3A
- Max. Fan Time: 30 mins
- Delay:
- Humidity Range: 45% ~ 80% RH

- Saves energy
- Reduces bathroom condensation
- Combines humidity and bath fan control functions

WM-DHOS

**Single Pole/PIR Motion Sensor With
Interchangeable Face Cover**

- Voltage: 120V/60Hz
- Time Delay: 15 sec & 5, 15, 30 mins
- Fan Load: 1/4HP (3A)
- Humidity Range: 45% - 80% RH

- Easily replaces existing standard switch
- Neutral wire required
- Compatible with incandescent, fluorescent, halogen, and LED Lighting

SDS-10

**Air Pressure Sensing Switch With Electric
Cycle Timing Board**

- SPDT/SPS Electric Load: 1/10 HP at 120-277V AC
- 28VA Pilot Duty: at 24V AC
- 125VA Pilot Duty: at 120V AC

COMPATIBLE FANS



- Switch enclosure with removable cover will accept 3-1/2" conduit connections

**AIR PRESSURE SENSING
SWITCH**



SPEED
CONTROLLER

ODC-SCK

Speed Controller For Next Generation Compact Series Fans

COMPATIBLE FANS



ODC SERIES

- Accessible speed adjustment
- The sensor mounts into the fan with two pre-drilled holes in a standard receptacle
- Allows for continuous adjustable speed control as per Ashrae 62.2, with high speed override



SPEED
CONTROLLER

ODD-SCK-500

Speed Controller For ODD-400 And ODD-500 Fans

COMPATIBLE FANS



ODD-400 | ODD-500

- Accessible speed adjustment
- Simple plug fits into fan housing and Can be installed with a new existing fan
- Allows for continuous adjustable speed control as per ASHRAE 62.2, with high speed override



IN-WALL
TIMER



HET01-R

15A Programmable 7 Day Digital Timer With Daylight Saving Feature

- Voltage: 120V/60Hz
- Tungsten Rating: 1200W
- Resistive Rating: 15A
- Motor Load: 1/4HP
- Operating Temp.: 0°C ~ +55°C

- Large digital LCD display
- Both automatic / manual operation possible
- Built-in memory holds settings indefinitely without power



IN-WALL
TIMER



HET06-R

Commercial grade Preset In-wall Countdown Single Pole Timer

- Voltage: 125V/60Hz
- Tungsten Rating: 1000W
- Resistive Rating: 15A
- Motor Load: 1/2HP
- Operating Temp.: 0°C ~ +55°C
- Humidity: 95% RH, non-condensing

- Large digital LCD display
- Both automatic / manual operation possible
- Built-in memory holds settings indefinitely without power



SPEED
CONTROLLER

ODM-SCK

Speed controller For Next Generation Micro Compact Series Fans

COMPATIBLE FANS



ODE SERIES

- Accessible speed adjustment
- Simple plug fits into fan housing and Can be installed with a new existing fan
- Allows for continuous adjustable speed control as per Ashrae 62.2, with high speed override



SMART SPEED
CONTROLLER

ODDMF-ST

6 Speed Smart Controller With Thermal Probe

COMPATIBLE FANS



ODDMF SERIES

- Monitor environmental temperature
- Accurate ventilation and energy saving with mode selection of Manual, Auto and Alert
- Supporting control of up to 4 EC fans simultaneously

OD-SCV-10A

Fully Variable 10 Amps Rotary Pole Speed Control For ORTECH AC And DC Motor Fans

- Voltage: 120V/60Hz
- Amps: 10A
- Type: Fully Variable
- Pole: Single

- Has single pole
- The colour of the knob is ORTECH white
- The principle of the knob is from low to high with mark and also mark OFF in the wallplate



ROTARY POLE
SPEED CONTROLLER

OD-SCV-5A

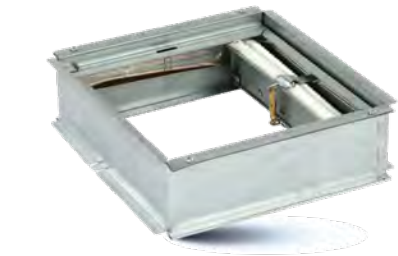
Fully Variable 5 Amps Rotary Pole Speed Control For ORTECH AC And DC Motor Fans

- Voltage: 120V/60Hz
- Amps: 5A
- Type: Fully Variable
- Pole: Single

- Has single pole with 7711 stainless steel
- The colour of the knob is ORTECH white
- The principle of the knob is from low to high with mark and also mark OFF in the wallplate



ROTARY POLE
SPEED CONTROLLER



FIRE
DAMPER



FIRE DAMPER-ODC

Fire Damper For The Next Generation
Compact Series Fans Only

COMPATIBLE FANS



ODC SERIES

- Fire Resistant: Up to 3 hours
- Ceiling radiation damper with 3 hour rating and includes fiberglass cover and ceramic fiber
- Comes with roll-framed frame made of galvanized steel



FIRE
DAMPER



FIRE DAMPER-ODE

Fire Damper For The Next Generation
Universal Series Fans Only

COMPATIBLE FANS



ODE SERIES

- Fire Resistant: Up to 3 hours
- 165°F fusible link and Meets or exceeds NFPA-90A
- Separate outer frame allows complete fan and damper serviceability

AIR VALVES



PAV-B

Polymeric Air Valve For Air
Supply And Exhaust

- To be mounted into round duct by mounting frame
- Polypropylene body with adjustable core and thread
- Available in 4", 5", 6", 8" sizes



SAV

Steel Supply Air Valve With
Adjustable Core

- 50mm mounting frame
- Supplied with galvanized steel mounting framed
- Available in 4", 5", 6", 8" sizes



BDA

Back Draft Damper For Airflow
Control In Ventilation Systems

- For mounting between ducts
- Available in 4", 5", 6", 8", 10", 12" sizes
- Can function in both horizontal and vertical positions

DRYER BOXES



ODB-100

Residential Grade Wall
Recessed Metal Dryer Box

- With a round hose hole
- Places dryer flush to wall without crushing exhaust hose or restricting airflow
- Fits 2x6 stud size



ODB4-100

Residential Grade Wall
Recessed Metal Dryer Box

- With an oval hose hole
- Places dryer flush to wall without crushing exhaust hose or restricting airflow
- Fits 2x4 stud size



VB-6-S

Commercial/Residential Grade
Vapour Barrier For Fans

- Helps control moisture
- Applicable for most building codes
- Made of heavy duty polyethylene

DUCTWORK



ADA 4 to 6

Universal Series Adapter From
4" Duct to 6"

- Fits all round duct designs

ADA 6 to 4 (P)

Polymeric Adapter From 6"
Duct To 4" For Ventilation Fans

- Polymeric adapter



ACCESS
DOOR

CAD

Access Door To Inspect And Maintain
Circular And Spiral Ventilation Ducts

- Inexpensive curved access door
- Polyamid knobs ensure a quick re-installation of the door without the need for any tools
- Shape allows the back plate to be passed through the duct openings, and the neoprene gasket on the back plate
- Grants easy access into sheet metal ductwork systems for resetting dampers, cleaning filters, or regular maintenance



ACCESS
DOOR

IAD SERIES

Indoor Access Door For Typical Ductwork.
Safety Chain & Neoprene Gasket Included

- Available in 8"x5", 12"x6", 18"x10", 21"x14" sizes
- Comes with retaining chain between door & frame
- Offers convenient quick access to volume control dampers, coils, filters & equipment



LINT TRAP
TO CATCH LINT

LINT TRAP-DS 6

6" Dual Size Lint Trap Suitable For 4" And 5"
Diameter Duct

- Easy to clean
- Magnetic door
- Glossy white face + no painted body
- Stainless steel mesh filter screen for long life
- Powder coated finish for increased durability
- 115.63 sq. inch filtering area, increasing dryer efficiency



LINT TRAP
TO CATCH LINT

LINT TRAP-DS-SL

Dual Size Lint Trap Suitable For 4" And 5"
Diameter Duct

- Easy to clean
- Length of the lint trap is 63.5cm (635mm)
- Glossy white face + no painted body
- Stainless steel mesh filter screen for long life
- Powder coated finish for increased durability
- 115.63 sq. inch filtering area, increasing dryer efficiency



FLUSH ACCESS
PANEL

FAP-18x18 | FAP-24x24 | FAP-30x24 | FAP-30x30 | FAP-38x26

Flush Access Panel With Welded Frame
And Strong Durable Bended Door Lid

- Screwdriver operated cam latch
- Good value for all plumbing, electrical, mechanical applications
- Easy installation — no further painting required
- With its concealed hinge, the door leaf can be opened from either left or right
- With its concealed hinge, the door leaf can be opened from either left or right



MUD ACCESS
PANEL

MAP-18x18 MAP-24x24 MAP-30x30

Mud Access Panel That Comes With Wet
Wall Set Bead Edge

- Screwdriver operated cam latch
- Good value for all plumbing, electrical, mechanical applications
- Easy to install adjustable fixing flat
- The door leaf can be left or right opened; fully concealed door hinge
- Paintable gray powder coated finish provides high durability and corrosion protection

VENT SMARTER, LIVE HEALTHIER!



TIPS FOR HAVING PROPER HVAC VENTILATION

- 1. Regular Filter Changes:** Replace HVAC filters every 1-3 months to maintain optimal airflow and improve indoor air quality.
- 2. Clean Air Ducts:** Schedule professional air duct cleaning every 3-5 years to remove dust, allergens, and debris that can obstruct airflow and reduce system efficiency.
- 3. Check Vent Locations:** Ensure vents are not blocked by furniture or curtains to allow for proper air circulation throughout your home.
- 4. Use Exhaust Fans:** Utilize exhaust fans in kitchens and bathrooms to remove excess moisture and pollutants, reducing the strain on your HVAC system.
- 5. Seal Duct Leaks:** Inspect and seal any leaks in your ductwork to prevent air loss and improve the efficiency of your HVAC system.

JOIN OUR COMMUNITY!

Visit our YouTube channel, subscribe, and be the first to see our latest tips and insights



ENGAGE WITH US ON YOUR FAVORITE SOCIAL NETWORKS

INSTAGRAM

@ ortechnidustries



FACEBOOK

@ ortechnidustries



LINKEDIN

@ ortechnidustries



OUR COMMITMENT

To be the trusted leader in delivering innovative and certified lighting, electrical, and HVAC solutions across diverse markets.

THE MORE YOU SHOP, THE MORE YOU SAVE!
LOYAL CUSTOMERS ENJOY GROWING DISCOUNTS.

CONTACT OUR TEAM FOR MORE INFO AT: [INFO@ORTECHINDUSTRIES.COM](mailto:info@ortechnidustries.com)

THOUGHTS & TAKEAWAYS

Use this space to capture your thoughts, ideas, or reminders as you explore our catalogue.
Note down anything that inspires or stands out to you along the way!

CONTACT OUR TEAM FOR MORE INFO AT: INFO@ORTECHINDUSTRIES.COM

THOUGHTS & TAKEAWAYS

Use this space to capture your thoughts, ideas, or reminders as you explore our catalogue.
Note down anything that inspires or stands out to you along the way!

CONTACT OUR TEAM FOR MORE INFO AT: INFO@ORTECHINDUSTRIES.COM



BRITISH COLUMBIA

13376 Comber Way, Surrey, BC
V3W 5V9

ONTARIO

205 Summerlea Rd, Brampton, ON
L6T 4E5

GET IN TOUCH

info@ortechindustries.com



LED LIGHTING | HVAC SOLUTIONS | ELECTRICAL SUPPLIES

ORTECHINDUSTRIES.CA