



BUILDING SYSTEMS INC.

LinuxTM



SPRING
2023

Product Catalogue

PLAEX.ca



TABLE OF CONTENTS

1 ABOUT US

2 WHY PLAEX

4 PLAEX-CRETE™

5 COMPARISONS

6 STEP BY STEP

8 LINX™ PARTS

10 USES

13 FAQ

To request a PDF version of this booklet, please email: media@plaex.ca

The world's **first** **& most durable** **fully interlocking building system**

PLAEX (pronounced play-ex) creates interlocking, mortarless building systems made from over 90% difficult-to-recycle and under-recycled waste products.

Initial tests show that this material (PLAEX-Crete) is more impact-resistant, water-resistant, and crack-resistant than conventional brick or concrete. With a simple design and familiar and fun nature, this material revolutionizes the way we build while greatly reducing the amount of waste in our oceans and landfills.





SIMPLE

If you played with building blocks as a kid, you can build with PLAEX

STRONG

Lab testing has shown that PLAEX-Crete is tougher and more durable than traditional materials.

SUSTAINABLE

Every PLAEX product made helps to keep harmful waste out of our environment

QUICK ASSEMBLY

ONLY 2 TOOLS REQUIRED: mallet & small flat prybar

NO CUTTING - NO MORTAR - NO MESS!

MORE

IMPACT-RESISTANT, WATER-RESISTANT,
INSECT-RESISTANT, & CRACK-RESISTANT
THAN TRADITIONAL MATERIALS, LIKE BRICK & CONCRETE

EACH PLAEX LinX CREATED **OFFSETS approx. 19KG of CO2**

We are helping businesses become more sustainable
through our Extended Producer Responsibility (EPR) Program

DIFFICULT TO RECYCLE WASTE CAN BECOME PLAEX PRODUCTS

"We are creating a durable, load bearing composite that can be formed into our innovative yet intuitive, reusable, fully interlocking block and panel system."



Dustin Bowers, Founder & CEO

PLAEX-Crete™

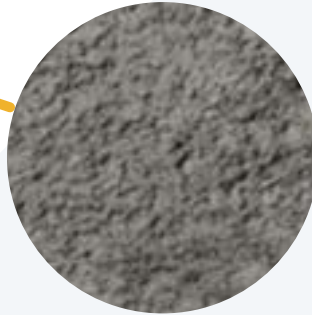
MADE FROM:

Agricultural Plastic

Marine Plastic

Industrial Plastic

Construction Waste



Plastic waste
typically ends up
in our oceans
& landfills



PLAEX receives
and processes it

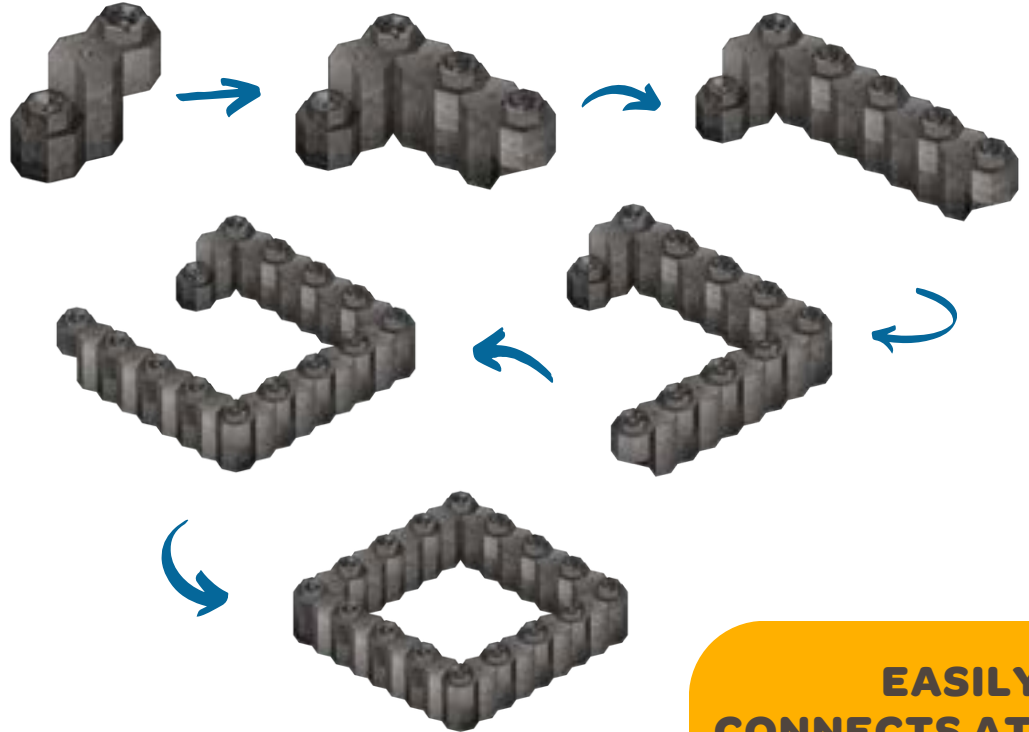


to create
PLAEX-Crete™!

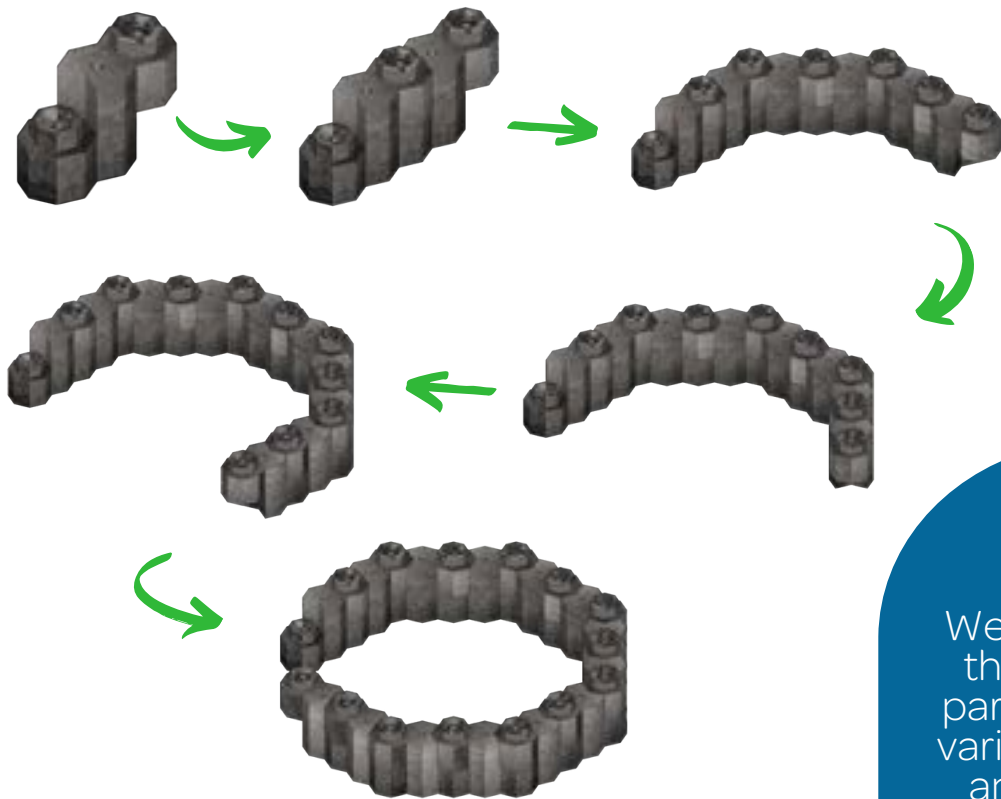
For a complete list of
accepted plastics & to
become a supplier,
contact: info@plaex.ca

	PLAEX	BRICK	CONCRETE
COMPRESSIVE STRENGTH	2900psi	1200psi	2500psi
WATER ABSORPTION	0.3%	18%	7%
DENSITY	1660kg/m3	1900kg/m3	2400kg/m3
THERMAL CONDUCTIVITY	0.67-0.96W/mK	0.6-1.1 W/mK	0.14 – 3.85 W/mK
R-VALUE	0.5 per 1"	0.2 per 1"	0.07 per 1"

BUILDING A LinX SQUARE



**EASILY
CONNECTS AT
45°, 90°
AND 180°**

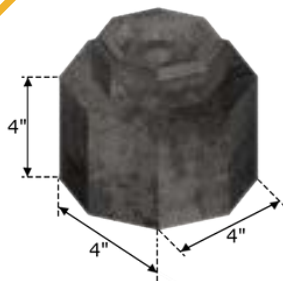


BUILDING A LinX CIRCLE



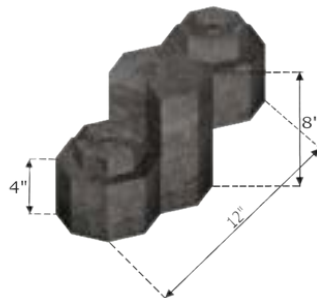
D-I-Y SETS

We'll ship you all the necessary parts to create a variety of shapes and projects, with minimal tools and skill required!



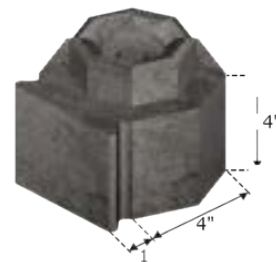
LinX E™

WIDTH	DEPTH	HEIGHT
4"	4"	4"
10.2cm	10.2cm	10.2cm



LinX Z™

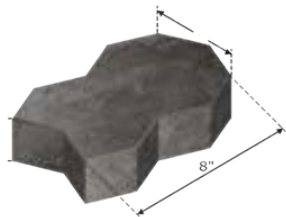
WIDTH	DEPTH	HEIGHT
12"	4"	8"
30.5cm	10.2cm	20.32cm



LinX Y™

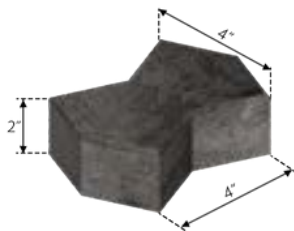
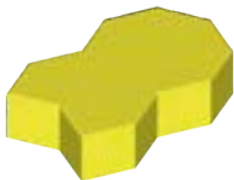
WIDTH	DEPTH	HEIGHT
4"	4"	4"
10.2cm	10.2cm	10.2cm





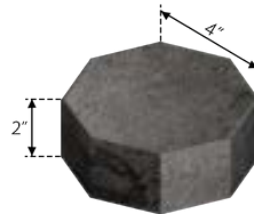
LinX C™

WIDTH	DEPTH	HEIGHT
8"	4"	2"
20.32cm	10.2cm	5.1cm



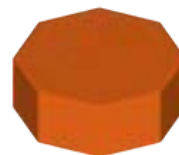
LinX B™

WIDTH	DEPTH	HEIGHT
4"	4"	2"
10.2cm	10.2cm	5.1cm



LinX D™

WIDTH	DEPTH	HEIGHT
4"	4"	2"
10.2cm	10.2cm	5.1cm



DESIGN IDEAS

LinX can be used in any low-rise landscaping project.

The possibilities are endless!

Some ideas include sheds, garden beds, gazebos, walkway edging, fences, patios, dog houses, sandpits, retaining walls & more!



LinX Sandpit



Gazebo



Shed & flower bed wall



Patio

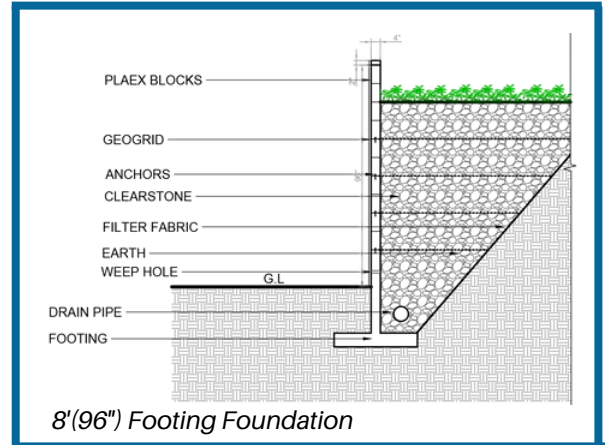
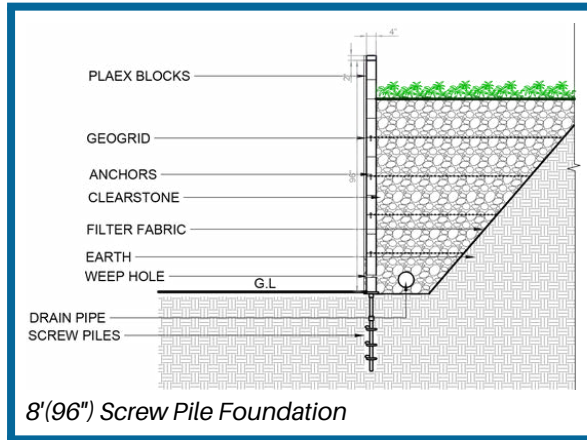
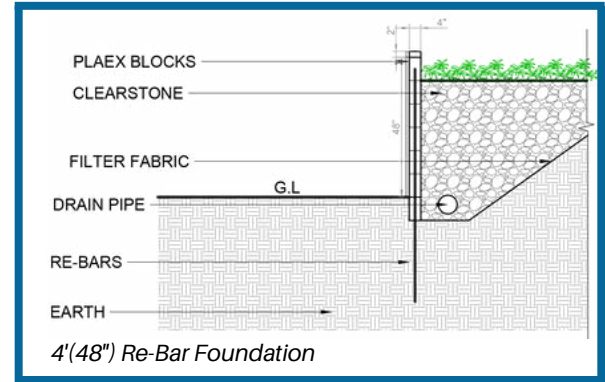


Garden beds & edging

Start your next project at PLAEX.ca

LinX™

RETAINING WALL CROSSSECTIONS



Frequently Asked Questions

HOW AND WHERE WILL PLAEX PRODUCTS BE MANUFACTURED?

All products will begin scale manufacturing in Dieppe, New Brunswick, Canada, using our proprietary equipment in Spring 2023 to serve Atlantic provinces. We will be rapidly expanding operations in the coming years.

IS PLAEX-CRETE SUBJECT TO CHEMICAL LEACHING?

Extensive chemical leaching testing will be happening Summer 2023. The materials we currently use in our composite are already approved for use in agricultural and marine applications, catching, growing, and processing the food you eat every day, we are certain that they are safe in many applications.

WHEN CAN I EXPECT DELIVERY?

We are setting up our first production facility and will be fulfilling orders this Spring (2023)

HOW LONG WILL MY PRODUCTS LAST?

A 100 + year lifespan is expected. Additionally, PLAEX products can be recycled back into new PLAEX products.

IS PLAEX™ A COST EFFECTIVE ALTERNATIVE?

PLAEX is extremely cost-effective as it eliminates waste, meaning a savings of 15% to 30% of total building costs. Since assembly is significantly quicker resulting in up to 50% less build time. Plus, the longevity of our products, means your investment will last a lifetime!



info@plaex.ca

Building a better future.