

# Panasonic

## VENTILATION & IAQ SOLUTIONS

Questions about ventilation strategy?  
Email us and an IAQ specialist will  
connect with you shortly.  
[ventfans@us.panasonic.com](mailto:ventfans@us.panasonic.com)

For complete product information  
and technical specifications visit  
[reinventingventing.com](http://reinventingventing.com)

# Panasonic

**Panasonic Life Solutions Company of America  
IAQ Division**  
Two Riverfront Plaza  
Newark, NJ 07102  
[reinventingventing.com](http://reinventingventing.com)

**Panasonic Customer Service**  
9 am – 6 pm (EST) Monday through Friday  
Phone: (866) 292-7299  
Fax: (888) 553-0723  
[www.panasonic.com/support](http://www.panasonic.com/support)  
[ventfans@us.panasonic.com](mailto:ventfans@us.panasonic.com)

*Design and specifications subject to change without notice.*

IAQ20013BRO | July 2021

r8





## AWARD WINNING COMMITMENT TO INNOVATION

Our long history of industry accolades continues. The Environmental Protection Agency recognized Panasonic with the 2021 ENERGY STAR® Partner of the Year Sustained Excellence award, which demonstrates exemplary commitment to leadership in energy efficiency and the ENERGY STAR® program.



## WITH GREAT POWER COMES GREAT VENTILATION AND HEALTHY LIVING

Panasonic ventilation fans give you the power. The power to easily remove unhealthy air and meet code. The power to reduce callbacks and build your reputation. The power to build healthy homes that guarantee customer satisfaction.

As part of our mission to promote clean indoor air and healthy homebuilding, Panasonic ventilation fans are built for power, brute strength, and the ability to move air more effectively.

That's why we engineer our fans to perform beyond the minimum 0.1" and 0.25" static pressure benchmarks. All ECM-motored Panasonic fans are tested to overcome static pressure at the 0.375" level more common on typical installations. The result? Optimum airflow regardless of complicated duct runs, expelling unhealthy air and moisture quickly.

With the power of Panasonic IAQ solutions, creating healthy homes and healthy families is easier than you think.



## TABLE OF CONTENTS

---

The Power of Panasonic	6-7
WhisperGreen® Select	8-15
SelectCycler® System	16-19
Fans with Built-in Controls	20-22
Single Speed Fans (On/Off)	23-28
Fan/Lights with Built-in Controls	29-30
Single Speed Fans with Lights (On/Off)	31-33
Energy Recovery Ventilators (ERV)	34-36
Specialty Fans	37-41
Inlet	42
Accessories	43-51

# The Power of Panasonic

## Rely on a higher power

Panasonic ventilation fans give you the power to virtually eliminate all your problems associated with under-performing ventilation. Most importantly, the power to build healthy homes that make healthy living a reality.



Ensure code compliance



Simplify design & installation



Reduce callbacks



Guarantee customer satisfaction

## Understanding the importance of power rating

To move contaminated air and moisture out of the home effectively, high-powered ventilation is essential. Panasonic ventilation fans deliver incomparable air-moving power as tested and verified in real-world settings.

Panasonic fans are engineered to perform beyond the minimum 0.1" and 0.25" static pressure benchmarks, despite complicated duct runs. Our ECM-motored fans provide powerful CFM output and overcome static pressure at the 0.375" level more common on typical installations.

### Did you know?

In field tests conducted by Lawrence Berkeley National Laboratory, nearly half of all installed ventilation fans fail the required airflow standards outlined in ASHRAE 62.2, despite their advertised CFM.

When you install a Panasonic ventilation fan you get the promised **True Flow rating** as listed on the box.

## Certified & Code Compliant

Panasonic ventilation fans are certified by the Home Ventilating Institute (HVI) and ENERGY STAR®, where guidelines exist. Models can be used to comply with ASHRAE 62.2, the ventilation standard required by LEED for Homes, ENERGY STAR® for Homes 3.2, Indoor airPlus, CALGreen, NAHB Green Building Standard, EarthCraft and other building programs.

## Commitment to Indoor Air Quality & Healthy Homes

Panasonic is a member of the Indoor Air Quality Association (IAQA). We are proud to join an organization that shares a belief we care about: providing good indoor air quality to consumers through our products and systems. As an IAQA member, we commit to uphold industry standards and guidelines to deliver products that remove contaminated air and improve indoor air quality for healthier homes.

## Powerfully quiet

Panasonic ventilation fans not only deliver the highest power rating to effectively remove air impurities from your home, they offer whisper-quiet operation so you'll barely know its on.

## Long Life

Permanently lubricated motors are engineered for trouble-free, continuous operation for 30,000 hours on AC motors, and upwards of 60,000 hours on DC (ECM) motors, along with rust-proof paint and galvanized housing.

## Easy Installation

Integrated duct adapters, adjustable mounting brackets (up to 24" o.c.), fan/motor units that easily detach from the housing and uncomplicated wiring all lend to user-friendly installation. Double-hanger bar systems allow for ideal positioning. Flex-Z Fast® single-hinged bracket provides flexible, fast and easy installation on select models.

## Energy Savings

When it comes to energy efficiency, our wattage requirements are among the lowest in the industry. Our fans have also been engineered to comply with ENERGY STAR® 4.0 requirements for increased efficiency (CFM/Watt), ensuring low cost, energy efficient operation.

## Airflow

A built-in plastic or metal damper (depending on model) in all ceiling-mounted models helps prevent backdraft. Built-in metal flange provides blocking for penetrations through drywall as an air barrier, and assists with the decrease in leakage in the building envelope during blower door testing.

## Lighting

All of our lighted models feature LED lighting that is ENERGY STAR® 2.0 certified and JA8 compliant for CA Title 24. They have 50,000 hours of rated life, along with an integrated <1W LED night light.

## Green Manufacturing

All fan only models are RoHS Approved.

## Warranty

6-Year warranty on ECM motors, 5-Year warranty on LEDs, 3-Year warranty on AC motors and all other parts.

Note: All our ventilation fans are UL listed for tub/shower enclosure when GFCI protected except for WhisperFresh Select, Intelli-Balance 100/200, WhisperLine, WhisperComfort and WhisperWarm DC fans.



**WhisperGreen® Select**  
VENTILATION FAN

## One Fan - Multiple IAQ Solutions

WhisperGreen® Select assures you'll meet code on every project. **Field testing shows that 0.375" static pressure more accurately represents a typical installation. While most fans don't deliver the power to overcome the 0.375" level**, WhisperGreen® Select is engineered for it.

One fan, you choose the CFM. Our built-in **Pick-A-Flow™** airflow selector allows you to select your required airflow (50-80-110 and 110-130-150 CFM models) with the flip of a switch.

WhisperGreen Select also offers three patented **Plug 'N Play™** modules that allow you to further customize your fan.

### **Multi-Speed with Time Delay\*** (FV-VS15VK1)

Allows you to select the proper CFM settings to satisfy ASHRAE 62.2 continuous ventilation requirements. The fan runs continuously at a preset lower level (0, 30-100 or 0, 50-120 CFM, in 10 CFM increments), then elevates to a maximum level of operation (50-80-110 or 110-130-150 CFM) when the wall switch is turned on, or when the Motion Sensor or Condensation Sensor module is activated.

A high/low delay timer returns fan to the preset CFM level after a pre-selected time.

\*Applies to both the pre-installed multi-speed with time delay, as well as the FV-VS15VK1 multi-speed with time delay Plug 'N Play module

### **SmartAction® Motion Sensor** (FV-MSVK1)

Automatically activates fan when someone enters the room. Once the settings have been applied, fan becomes truly automatic. Also activates a 20-minute delay off timer.

### **Condensation Sensor** (FV-CSVK1)

Helps control bathroom condensation to prevent mold and mildew. Sensor technology detects relative humidity and temperature to anticipate dew point, automatically turning the fan on to control humidity.

Built-in Relative Humidity (RH) sensitivity adjustment (from 30%-80%) enables fine tuning for moist conditions and for satisfying CALGreen requirements. When Condensation Sensor is used with multi-speed functionality, fan will ramp up to high speed when moisture is detected. Also activates a 20-minute delay off timer.





One Fan - Multiple IAQ Solutions

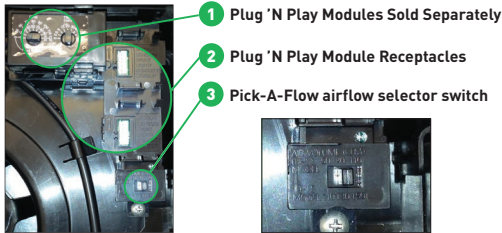
**FV-0511VK2** 50-80-110 CFM 4" or 6" Duct  
**FV-1115VK2** 110-130-150 CFM 6" Duct



### WhisperGreen Select Key Features

- Precision, whole-house ventilation solution ideal for use in the bathroom, laundry room, sun room, basement or garage
- Pick-A-Flow™ airflow selector combined with SmartFlow™ technology simplifies selection process and ensures optimum performance to meet code and reduce callbacks
- Plug 'N Play modules provide customization and added functionality
- Elegant grille design
- Revolutionary ECM motor with SmartFlow™ Technology ensures optimal CFM output
- Single-hinged Flex-Z Fast® bracket provides flexible, fast and easy installation
- Environmentally friendly 26-gauge housing using Zinc-Aluminum-Magnesium (ZAM) coating
- Dual access junction box
- Can be used to comply with ASHRAE 62.2, LEED, CALGreen, Indoor airPlus, California Title 24 and all Energy Star for Homes programs

### Plug 'N Play Receptacles & Pick-A-Flow Switch



- 1 Plug 'N Play Modules Sold Separately
- 2 Plug 'N Play Module Receptacles
- 3 Pick-A-Flow airflow selector switch



FV-0511VK2



FV-1115VK2

### HEALTHY AIR, HEALTHY HOME

True Flow ratings at **0.375"** static pressure provide powerful airflow to assure code compliant, healthy homes.\*



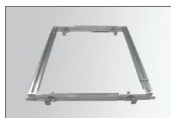
Multi-Speed with Time Delay\*  
(FV-VS15VK1)



SmartAction® Motion Sensor\*  
(FV-MSVK1)



Condensation Sensor\*  
(FV-CSVK1)



Flex-Z Fast®:  
Single-hinged Flex-Z Fast® bracket provides flexible, fast and easy installation

\*Industry research indicates static pressure in typical installations ranges from 0.20" to 0.375".



Flex-ZFast®



CALGreen



## WhisperGreen Select

FV-0511VK52 30 to 110 CFM 4" or 6" Duct



7-3/8" Depth



FV-0511VK52

### HEALTHY AIR, HEALTHY HOME

True Flow ratings at **0.375"** static pressure provide powerful airflow to assure code compliant, healthy homes.\*

## One Fan - Multiple IAQ Solutions

### WhisperGreen Select Key Features

- Precision, whole-house ventilation solution ideal for use in the bathroom, laundry room, sun room, basement or garage
- Pick-A-Flow™ airflow selector (50-80-110 or 110-130-150 CFM models) combined with SmartFlow™ technology simplifies the selection process and ensures optimum performance to meet code and reduce callbacks
- Plug 'N Play modules provide three value-added features
- Pre-installed multi-speed control module with high/low delay timer up to 60 minutes
- Revolutionary ECM motor with SmartFlow™ Technology ensures optimal CFM output
- Light option (FV-0511VKSL2) incorporates a 10W dimmable LED chip panel with <1W LED night light, JA-8 compliant for CA Title 24
- Elegant grille design
- Single-hinged Flex-Z Fast® bracket provides flexible, fast and easy installation
- Environmentally friendly 26 gauge housing using Zinc-Aluminum-Magnesium (ZAM) coating
- Dual access junction box
- Can be used to comply with ASHRAE 62.2, LEED, CALGreen, Indoor airPlus, California Title 24 and all Energy Star for Homes programs

## WhisperGreen Select

FV-0511VKSL2 30 to 110 CFM 4" or 6" Duct



7-3/8" Depth



FV-0511VKSL2

### HEALTHY AIR, HEALTHY HOME

True Flow ratings at **0.375"** static pressure provide powerful airflow to assure code compliant, healthy homes.\*

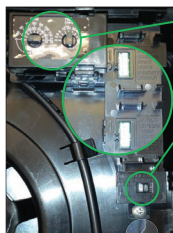
## One Fan/Light - Multiple IAQ Solutions

### LED Lighting

INCLUDES: 10 Watt dimmable LED chip panel/3000 Kelvin Warm White/90 CRI/700 lumens/70 LPW/ENERGY STAR® 2.2 certified/JA8 compliant for CA Title 24/50,000 hours rated average life/<1W LED night light.



### Plug 'N Play Receptacles & Pick-A-Flow Switch



- 1 Pre-Installed Multi-Speed Module
- 2 Plug 'N Play Module Receptacles
- 3 Pick-A-Flow airflow selector switch



\*Industry research indicates static pressure in typical installations ranges from 0.20" to 0.375".



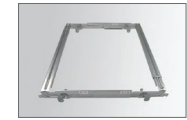
Pre-installed Multi-Speed with Time Delay



SmartAction® Motion Sensor\* (FV-MSVK1)



Condensation Sensor\* (FV-CSVK1)



Flex-Z Fast®: Single-hinged Flex-Z Fast® bracket provides flexible, fast and easy installation



Flex-ZFast®



CALGreen



# Single Speed Fans with Lights (On/Off)

**WhisperGreen<sup>®</sup> Select**  
VENTILATION FAN

**FV-0511VKL2** 50-80-110 CFM 4" or 6" Duct  
**FV-1115VKL2** 110-130-150 CFM 6" Duct



## One Fan - Multiple IAQ Solutions

### WhisperGreen Select Key Features

- Precision, whole-house ventilation solution ideal for use in the bathroom, laundry room, sun room, basement or garage
- Pick-A-Flow™ airflow selector (50-80-110 or 110-130-150 CFM models) combined with SmartFlow™ technology simplifies the selection process and ensures optimum performance to meet code and reduce callbacks
- Plug 'N Play™ modules provide up to three value added features [See page 8-9 for details]
- Revolutionary ECM motor with SmartFlow™ technology for optimum CFM output
- Incorporates a 10W dimmable LED chip panel with <1W LED night light, JA-8 compliant for CA Title 24
- Elegant grille design
- Single-hinged Flex-Z Fast® bracket provides flexible, fast and easy installation
- Environmentally friendly 26 gauge housing using Zinc-Aluminum-Magnesium (ZAM) coating
- Dual access junction box
- Can be used to comply with ASHRAE 62.2, LEED, CALGreen, California Title 24, Indoor airPlus and all Energy Star for Homes programs



FV-0511VKL2

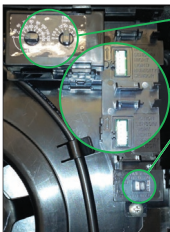


FV-1115VKL2

### HEALTHY AIR, HEALTHY HOME

True Flow ratings at **0.375"** static pressure provide powerful airflow to assure code compliant, healthy homes.\*

### Plug 'N Play Receptacles & Pick-A-Flow Switch



- 1 Plug 'N Play Modules Sold Separately
- 2 Plug 'N Play Module Receptacles
- 3 Pick-A-Flow airflow selector switch



### LED Lighting

INCLUDES: 10 Watt dimmable LED chip panel/3000 Kelvin Warm White/90 CRI/700 lumens/70 LPW/ENERGY STAR® 2.2 certified/JA8 compliant for CA Title 24/50,000 hours rated average life/<1W LED night light.



Multi-Speed with Time Delay\* (FV-VS15VK1)



SmartAction® Motion Sensor\* (FV-MSVK1)



Condensation Sensor\* (FV-CSVK1)



Flex-Z Fast®:  
Single-hinged Flex-Z Fast® bracket provides flexible, fast and easy installation

\*Industry research indicates static pressure in typical installations ranges from 0.20" to 0.375".



**Flex-ZFast<sup>®</sup>**

CALGreen







**WhisperGreen Select**  
VENTILATION FAN  
[FV-0511VK2 shown\*]



**+** (OPTIONAL)



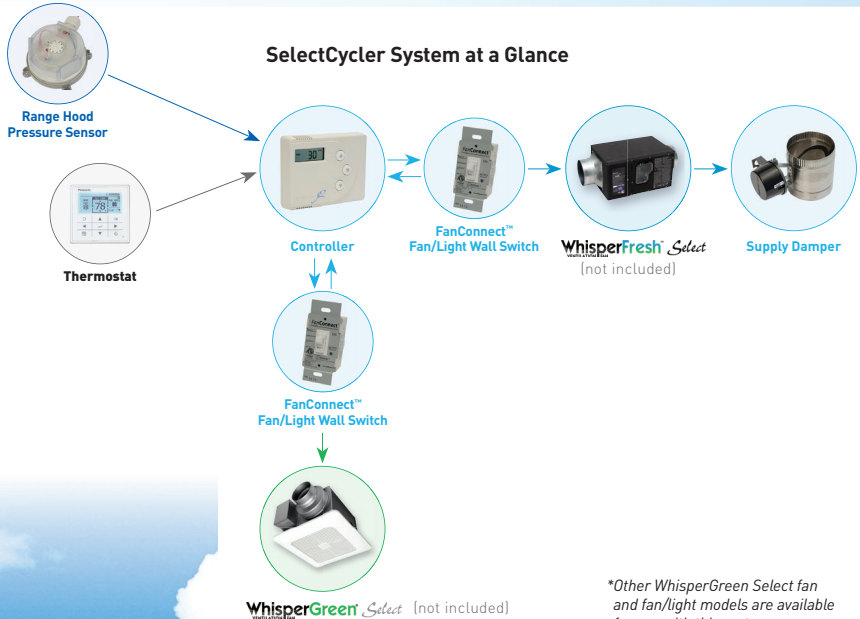
**WhisperFresh Select**  
VENTILATION FAN  
[FV-15NLS1]



## Low Cost, Whole House Ventilation Solution

The SelectCycler® System is a cost effective, whole house ventilation solution for ASHRAE 62.2 compliance. By combining the best parts of both central fan integrated ventilation (typically forced air HVAC/AHU) and exhaust fan ventilation, the SelectCycler System provides the ultimate energy efficient ventilation solution.

### SelectCycler System at a Glance



\*Other WhisperGreen Select fan and fan/light models are available for use with this system



### WhisperGreen Select Provides Customizable Airflow



**Pick-A-Flow airflow selector switch**

The SelectCycler System was designed exclusively to work with WhisperGreen Select fans, which incorporate Pick-A-Flow™ adjustable CFM technology for optimal use in Balanced mode.



WhisperGreen Select features an ultra-quiet ECM motor that incorporates intelligent SmartFlow™ technology, so it automatically adjusts its speed to ensure optimal CFM output, even in the case of a complicated duct run.



## Low Cost, Whole House Ventilation Solution

**Controller, Supply Damper & FanConnect™ Wall Switch Kit**  
**SACG2K-04/06/08/10** 4", 6", 8" or 10" Duct Options



SelectCycler® System offers the **most cost effective** solution for meeting ventilation code and minimizing the impact to your HERS Index.

### SelectCycler Key Features

- Ideal for single and multi-family construction
- Provides whole house ventilation control that's integrated into the home's Central HVAC system
- Durable, powered open/close damper alleviates damper chatter
- Controls WhisperGreen Select™ (or any 110VAC ventilation fan), to provide supplemental ventilation as needed to meet ASHRAE 62.2
- Two operational modes help a home achieve the lowest cost per HERS point for either supply or balanced ventilation strategies
- Works in tandem with spot exhaust fan to achieve hybrid supply or balanced ventilation
- Features a patented setup process, including two simple options: Flow vs Time
- Digital display panel shows system status and aids in troubleshooting
- Fan/light wall switch can be programmed from the controller to provide a delay timer function

### SelectCycler Kit (SACG2K)

#### Programmable Wall Mounted Controller

- Ideal for single and multi-family construction
- Calculates supply duct and exhaust fan run cycles to meet ASHRAE 62.2
- Patented algorithm calculates operation time to meet ASHRAE 62.2 ventilation requirements
- Allows for programmable hours of operation



#### Motorized Supply Damper

- Stainless steel, power open/close damper
- Available in 4", 6", 8" or 10" duct size
- Operating Voltage: 24VAC (up to 30VAC max)
- Current Draw: 0.07 A idle; 0.125 A for 15 second damper transit time
- Damper can be installed in any position

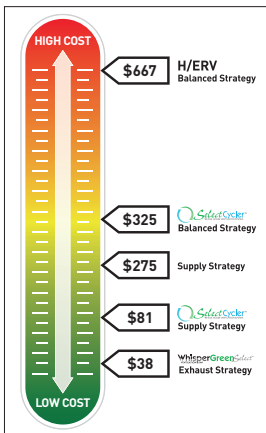


#### FanConnect™ Bathroom Fan/Light Wall Switch

- Compatible with single, or multi-speed fans, set to a single speed setting
- Light: 450 Watts @ 120VAC (blue wire)
- Fan: 150 Watts @ 120VAC (red wire)
- Operation: 120VAC +/- 10%



### Ventilation Cost Per HERS Point Index\*



SelectCycler System **Balanced Mode**  
 Lowest cost per HERS point for  
**Balanced Ventilation**

SelectCycler System **Hybrid Mode**  
 Lowest cost per HERS point for  
**Supply Ventilation**

WhisperGreen Select™  
 Lowest cost per HERS point for  
**Exhaust Ventilation**

\*Modeling conducted by third-party RESNET Provider EPX/NRGLogic

### Optional Accessories

- The range hood pressure sensor works exclusively with the SelectCycler System to solve depressurization issues by allowing make up air to enter as soon as the range hood is turned on
- Hot and cold temperature sensors disable the fresh air damper in extreme temperatures

#### Range Hood Pressure Sensor (SACRR)

- Solves depressurization issues
- Max Operating Pressure -10kPa
- Pressure Range: 20 - 200 Pa +/- 15%
- Operating Temperature: -40°C to 85°C



#### Hot Temperature Sensor (SACTG-H01)

- System control in extreme hot climates
- OFF Temperature: 95°F +/- 5°
- ON Temperature: 4°F lower
- Operation: 2A @ 24VAC



#### Cold Temperature Sensor (SACTG-C02)

- System control in extreme cold climates
- OFF Temperature: 35°F +/- 5°
- ON Temperature: 4°F higher
- Operation: 2A @ 24VAC



# Fans with Built-in Controls

## WhisperSense<sup>®</sup> DC VENTILATION FAN

### Precision Spot Ventilation Solution, Moisture Control for CALGreen Compliance

**FV-0511VQC1** 50-80-110 4" or 6" Duct



FV-0511VQC1

#### HEALTHY AIR, HEALTHY HOME

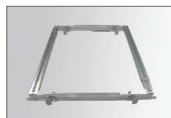
True Flow ratings at **0.375"** static pressure provides powerful airflow to assure code compliant, healthy homes.\*

#### WhisperSense DC Key Features

- Precision spot ventilation fans ideal for use in the bathroom, laundry room, mud room, basement or garage
- Revolutionary ECM motor with SmartFlow™ Technology ensures optimal CFM output
- Pick-A-Flow™ airflow selector (50-80-110 CFM) combined with SmartFlow™ technology simplifies the selection process and ensures optimum performance to meet code and reduce callbacks
- Dual Sensor Technology (motion & moisture) provides built-in redundancy for the ultimate in automatic moisture and odor control
- Single-hinged Flex-Z Fast® bracket provides fast, flexible installation
- Elegant grille design compliments the aesthetics of any room
- Can be used to comply with LEED, ENERGY STAR®, Indoor airPlus, CALGreen, EarthCraft, CA Title 24



Built-in Controls



Flex-Z Fast®:

Single-hinged Flex-Z Fast® bracket provides flexible, fast and easy installation

## WhisperFit<sup>®</sup> DC VENTILATION FAN

### Ideal Retrofit Fan / Condensation Model

**FV-0511VFC1** 50, 80 or 110 CFM 4" or 3" Duct



FV-0511VFC1

#### HEALTHY AIR, HEALTHY HOME

True Flow ratings at **0.375"** static pressure provides powerful airflow to assure code compliant, healthy homes.\*

#### WhisperFit DC Key Features

- Revolutionary ECM motor with SmartFlow™ Technology ensures optimal CFM output
- Built-in Pick-A-Flow™ airflow selector allows you to select your required airflow of 50, 80, or 110 CFM with a simple flip of a switch
- Condensation Sensor model (FV-0511VFC1) provides hands-free operation and automatic moisture control
- Single-hinged Flex-Z Fast® bracket provides flexible, fast and easy installation
- Pre-installed alignment guides help guide adaptor assembly into place during installation for a tight precision fit
- Temporary clip molded into casing holds fan in place while installer fastens fan to can safely
- Plastic standard 4" adaptor with backdraft damper/shutter allows for better air tightness
- Can be used to comply with ASHRAE 62.2, LEED, IAP and California Title 24

#### Onboard Condensation Sensor

To help you meet stricter ventilation codes and indoor air quality standards, our optional model (FV-0511VFC1) (Fan/Condensation Sensor) includes onboard humidity sensing that delivers effective moisture control and healthy indoor air. Advanced sensor technology detects relative humidity and temperature to anticipate dew point, automatically turning the fan on to control moisture.



\*Industry research indicates static pressure in typical installations ranges from 0.20" to 0.375".



Flex-Z Fast<sup>®</sup>



CALGreen



Flex-Z Fast<sup>®</sup>



CALGreen



## WhisperValue<sup>®</sup> DC

VENTILATION FAN

### Precision Spot Ventilation Solution, Ideal for Multi-Family

**FV-0810VSS1** 80 or 100 CFM 4" Oval Duct  
**FV-0510VSC1** 50-80-100 CFM 4" Oval Duct



3-3/8"  
Depth

Lowest profile,  
perfect fit in a 2 x 4!  
Lowest profile  
**ENERGY STAR<sup>®</sup>** fan  
available –  
fits anywhere!



FV-0810VSS1



FV-0510VSC1

### HEALTHY AIR, HEALTHY HOME

True Flow ratings at **0.375"** static pressure provide powerful airflow to assure code compliant, healthy homes.\*

### WhisperValue DC Key Features

- Precision spot ventilation fan ideal for residential construction (single and multi-family) and manufactured homes
- Revolutionary ECM motor with SmartFlow™ Technology ensures optimal CFM output
- Pick-A-Flow™ airflow selector combined with SmartFlow™ technology simplifies the selection process and ensures optimum performance to meet code and reduce callbacks
- FV-0810VSS1 incorporates Multi-Speed control with 20 minute time delay for ASHRAE 62.2 compliance
- FV-0510VSC1 features a built-in Condensation Sensor to control moisture in the bathroom for CALGreen compliance
- Unique L-Shaped bracket simplifies installation and provides strong support
- UL approved for ceiling or wall mount (fits in a 2 x 4 stud wall)
- Wall Installation reduces cost by eliminating the need to incorporate a radiation damper when penetrating fire rated ceilings, making it ideal for Multi-Family applications
- Can be used to comply with ASHRAE 62.2, LEED, Indoor airPlus and California Title 24



Pick-A-Flow<sup>®</sup> Airflow Selector Switch (FV-0510VSC1 Shown)



Condensation Sensor RH sensitivity (30% – 80% RH) adjustment (FV-0510VSC Only)



Optional 4" Oval to 3" Round Duct Adapter (Model #: FV-VS43R)



Multi-Speed with 20 minute Time Delay (FV-0810VSS1 Only)

\*Industry research indicates static pressure in typical installations ranges from 0.20" to 0.375".

## WhisperCeiling<sup>®</sup> DC

VENTILATION FAN

### Precision Spot Ventilation Solution

**FV-0511VQ1** 50-80-110 CFM 4" or 6" Duct  
**FV-1115VQ1** 110-130-150 CFM 6" Duct



7-3/8"  
Depth



FV-0511VQ1



FV-1115VQ1

### HEALTHY AIR, HEALTHY HOME

True Flow ratings at **0.375"** static pressure provide powerful airflow to assure code compliant, healthy homes.\*

### WhisperCeiling DC Key Features

- Precision spot ventilation fans ideal for use in the bathroom, laundry room, sun room, basement or garage
- Revolutionary ECM motor with SmartFlow™ Technology ensures optimal CFM output
- Powerful CFM output overcomes 0.375" static pressure to assure code compliant, healthy homes
- Pick-A-Flow™ airflow selector (50-80-110 or 110-130-150 CFM models) combined with SmartFlow™ technology simplifies the selection process and ensures optimum performance to meet code and reduce callbacks
- Single-hinged Flex-Z Fast<sup>®</sup> bracket provides fast, flexible installation



Pick-A-Flow™ airflow selector switch (FV-0511VQ1 Shown)



Flex-Z Fast<sup>®</sup>: Single-hinged Flex-Z Fast<sup>®</sup> bracket provides flexible, fast and easy installation

\*Industry research indicates static pressure in typical installations ranges from 0.20" to 0.375".



## Quiet Spot Ventilation Solution

<b>FV-20VQ3</b>	190 CFM	6" Duct
<b>FV-30VQ3</b>	290 CFM	6" Duct
<b>FV-40VQ4*</b>	390 CFM	6" Duct



### WhisperCeiling Key Features

- Large volume (190-390) CFM options designed for light commercial applications
- AC motor
- UL listed for tub/shower enclosure when GFCI protected
- Can be used to comply with ASHRAE 62.2, LEED, Indoor airPlus, EarthCraft and California Title 24

\*FV-40VQ4 does not comply with the ENERGY STAR® 4.0 requirement for increased efficiency (CFM/Watt).



## Precision Spot Ventilation Solution, Ideal for Multi-Family

**FV-0510VS1** 50-80-100 CFM 4" Oval Duct



**Lowest profile, perfect fit in a 2 x 4!**  
**Lowest profile ENERGY STAR® fan available – fits anywhere!**

Fits in nearly every ceiling cavity.



FV-0510VS1

### HEALTHY AIR, HEALTHY HOME

True Flow ratings at **0.375"** static pressure provide powerful airflow to assure code compliant, healthy homes.\*

### WhisperValue DC Key Features

- Revolutionary ECM motor with SmartFlow™ Technology ensures optimal CFM output
- Precision spot ventilation fan ideal for residential construction (single and multi-family) and manufactured homes
- Pick-A-Flow™ airflow selector combined with SmartFlow™ technology simplifies the selection process and ensures optimum performance to meet code and reduce callbacks
- UL approved for ceiling or wall mount (fits in a 2 x 4 stud wall)
- Wall installation eliminates the need for a radiation damper

### WhisperValue DC Contractor Pack\*

The Contractor Pack includes four complete fans. The housing and motor/grille are packaged separately for flexibility during installation.

Housing Can	Motor/Grille Assembly	Complete Fan Unit	Master Pack
FV-0510VSA1	FV-0510VSB1	FV-0510VS1	4

\*Must order in quantities of 4, shipment will contain 1 box with 4 units.



Pick-A-Flow™  
 Airflow  
 Selector Switch  
 (FV-0510VSC1  
 Shown)



Optional 4"  
 Oval to 3"  
 Round Duct  
 Adapter  
 (Model #:  
 FV-VS43R)

\*Industry research indicates static pressure in typical installations ranges from 0.20" to 0.375".



## WhisperValue<sup>®</sup> DC

### Transfer Register Box

FV-JD



### Transfer Register Box (TRB) – Room to Room Solution

#### Key Features

- Designed exclusively for use with the WhisperValue DC fan and WhisperValue fan/light combinations
- Perfect for room-to-room powered circulation in multi-family projects with ductless heat pumps
- Powered 50 CFM transfer at less than 0.3 sone (based on FV-0510VS1 fan)
- 26 gauge steel, fire code rated accessory, sold separately as model #FV-JD
- No need for a radiation damper like on jump ducts
- Works with standard size HVAC registers – 4" x 10" HVAC supply grille
- Can be used to comply with ASHRAE 62.2, LEED for Homes, CALGreen and all Energy Star for Homes programs\*

\*Specific to WhisperValue<sup>®</sup> DC™ fans

## WhisperFit<sup>™</sup> DC

### Ideal Retrofit Fan Only Model

FV-0511VF1 50, 80, or 110 CFM 4" or 3" Duct



FV-0511VF1

### HEALTHY AIR, HEALTHY HOME

True Flow ratings at **0.375"** static pressure provides powerful airflow to assure code compliant, healthy homes.\*

### WhisperFit DC Key Features

- Revolutionary ECM motor with SmartFlow™ Technology ensures optimal CFM output
- Built-in Pick-A-Flow™ airflow selector allows you to select your required airflow of 50, 80, or 110 CFM with a simple flip of a switch
- Single-hinged Flex-Z Fast<sup>®</sup> bracket provides flexible, fast and easy installation
- Pre-installed alignment guides help guide adaptor assembly into place during installation for a tight precision fit
- Temporary clip molded into casing holds fan in place while installer fastens fan to can safely
- Plastic standard 4" adapter with backdraft damper/shutter allows for better air tightness
- Can be used to comply with ASHRAE 62.2, LEED, Indoor airPlus and California Title 24

### Installation is as Easy as 1-2-3!



Single-Hinged Flex-Z Fast<sup>®</sup> bracket installed with existing 3" duct and wiring



Fan can be installed with motor in a 2 x 6 joist using the existing duct and included 4" to 3" duct adapter



Fan is installed and ready to go!



## Cost-effective Spot Ventilation Solution

FV-07VBA1A + FV-07VBB1 70/90 CFM 4" Duct



4-6/8" Depth



FV-07VBA1A + FV-07VBB1

### HEALTHY AIR, HEALTHY HOME

True Flow ratings at **0.375"** static pressure provide powerful airflow to assure code compliant, healthy homes.\*

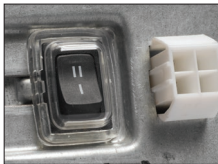
### EcoVent Key Features

- Ideal for new residential construction (High Performance / ENERGY STAR® Single Family Production Builders and Manufactured Housing)
- The most cost effective 90 CFM spot ventilation fan on the market.
- The only 2-speed 70/90 CFM spot ventilation fan on the market (assures code compliance)
- Delivers a True Flow rating of 56 CFM at 0.375" static pressure (when set at the 90 CFM setting)
- Most cost effective ENERGY STAR® solution for home and manufacturing builders
- Adjustable, two speed (70/90 CFM) spot ventilation solution
- Small grille design complements the aesthetics of your bathroom, powder room or laundry room
- Fits in 2 x 6 construction
- Available in contractor packs only – housing and motor/grille packaged separately reduces risk of parts being lost or damaged on site
- Can be used to comply with ASHRAE 62.2, LEED and all Energy Star for Homes programs

### EcoVent Universal Can Contractor Packs

Model #	Description	Contents	Master Pack*
FV-07VBA1A	Universal Housing Can	Housing Can, Duct Adapter & Junction Box	4
FV-07VBB1	Motor/Grille Assembly	Motor & Grille	4

\*Must order in quantities of 4, shipment will contain 1 box with 4 pieces of each item.



2-Speed Selector (70/90 CFM)

\*Industry research indicates static pressure in typical installations ranges from 0.20" to 0.375".



## Precision Spot Ventilation Solution and Moisture Control for CALGreen Compliance

FV-0511VQCL1 50-80-110 CFM 4" or 6" Duct



7-3/8" Depth



FV-0511VQCL1

### HEALTHY AIR, HEALTHY HOME

True Flow ratings at **0.375"** static pressure provide powerful airflow to assure code compliant, healthy homes.\*

### WhisperSense DC Key Features

- Precision spot ventilation fan/light ideal for use in the bathroom, laundry room, sun room, basement or garage
- Revolutionary ECM motor with SmartFlow™ Technology ensures optimal CFM output
- Pick-A-Flow™ airflow selector (50-80-110) combined with SmartFlow™ technology simplifies the selection process and ensures optimum performance to meet code and reduce callbacks
- One 10W dimmable LED chip panel with <1W LED night light for warm, long-life energy efficient illumination (night light must be wired separately)
- Single-hinged Flex-Z Fast® bracket provides fast, flexible installation
- Can be used to comply with LEED, ENERGY STAR®, Indoor AirPlus, EarthCraft, JA8 compliant for CA Title 24



### LED Lighting

INCLUDES: One 10W Dimmable LED chip panel with <1W LED night/3000 Kelvin Warm White/90 CRI/700 lumens/70 LPW/ ENERGY STAR® 2.2 certified/JA8 compliant for CA Title 24/50,000 hours rated average life.



Pick-A-Flow™ airflow selector switch (FV-0511VQCL1 Shown)



Flex-Z Fast® : Single-hinged Flex-Z Fast® bracket provides flexible, fast and easy installation



Built-in Controls

\*Industry research indicates static pressure in typical installations ranges from 0.20" to 0.375".



## WhisperValue<sup>DC</sup>

### Precision Spot Ventilation Solution, Ideal Multi-Family Fan/Light

<b>FV-0510VSL1</b>	50-80-100 CFM	4" Oval Duct
<b>FV-0810VSSL1</b>	80 or 100 CFM	4" Oval Duct
<b>FV-0510VSCL1</b>	50-80-100 CFM	4" Oval Duct



Lowest profile,  
perfect fit in a 2 x 4!  
Lowest profile  
ENERGY STAR<sup>®</sup> fan  
available –  
fits anywhere!



### HEALTHY AIR, HEALTHY HOME

True Flow ratings at **0.375"** static pressure provide powerful airflow to assure code compliant, healthy homes.\*

- FV-0510VSL1
- FV-0810VSSL1
- FV-0510VSCL1

### WhisperValue DC Key Features\*

- Revolutionary ECM motor with SmartFlow™ Technology ensures optimal CFM output
- Pick-A-Flow™ airflow selector combined with SmartFlow™ technology simplifies the selection process and ensures optimum performance to meet code and reduce callbacks
- FV-0810VSSL1 incorporates Multi-Speed with 20-minute control for ASHRAE 62.2 compliance
- FV-0510VSCL1 features a built-in Condensation Sensor to control moisture in the bathroom for CALGreen compliance
- Incorporates one 10W dimmable LED chip panel with <1W LED night light for warm, energy efficient illumination (night light must be wired separately)
- Unique L-Shaped bracket simplifies installation and provides strong support
- Ideal for Multi-Family applications as wall installation eliminates need for a radiation damper in fire rated ceilings
- Can be used to comply with ASHRAE 62.2, LEED, Indoor airPlus, JA8 compliant for CA Title 24 and CALGreen4
- Optional 4" oval to 3" round duct adapter (FV-VS43R) and Transfer Register Box (FV-JD) sold separately.



### LED Lighting

INCLUDES: One 10W Dimmable LED chip panel with <1W LED night light for warm, energy efficient illumination. Panel specifications include: 3000 Kelvin Warm White/90CRI/700 lumens/70 LPW/ENERGY STAR<sup>®</sup> 2.0 certified/JA8 compliant for CA Title 24/50,000 hours rated average life.



Pick-A-Flow™ Airflow Selector Switch with 20 minute time delay (FV-0810VSSL1 Shown)



Optional 4" Oval to 3" Round Duct Adapter (Model #: FV-VS43R)



Optional Transfer Register Box (Model #: FV-JD)

\*Industry research indicates static pressure in typical installations ranges from 0.20" to 0.375".

## WhisperRecessed<sup>LED</sup>

### Design Solution for Fan/Light Combinations

<b>FV-08VRE2</b>	80 CFM	4" or 6" Duct
------------------	--------	---------------



### WhisperRecessed LED Key Features

- Includes (1) replaceable, 8W ENERGY STAR 2.0 certified, GU24 base LED lamp, JA-8 compliant for CA Title 24 and Title 20
- ENERGY STAR<sup>®</sup> rated architectural grade recessed fan with dimmable LED light
- Quiet, energy efficient and powerful 80 CFM ventilation hidden above the ceiling
- Ideal for use in the bathroom, living room or laundry room
- Beautiful lighting with 6" aperture and advanced luminaire design

\*Can be used to comply with CALGreen when controlled by the Panasonic Condensation Sensor Plus



### LED Lamp

INCLUDED: (1) 8 Watt GU24 base LED lamp/2700 Kelvin Warm White/>92 CRI/720 lumens/90 LPW/ENERGY STAR certified/25,000 hours rated average life.





## WhisperCeiling<sup>®</sup> DC

### Precision Spot Ventilation Solution

**FV-0511VQL1** 50-80-110 CFM 4" or 6" Duct  
**FV-1115VQL1** 110-130-150 CFM 6" Duct



FV-0511VQL1



FV-1115VQL1

#### HEALTHY AIR, HEALTHY HOME

True Flow ratings at **0.375"** static pressure provide powerful airflow to assure code compliant, healthy homes.\*

#### WhisperCeiling DC Key Features

- Precision spot ventilation fan/light ideal for use in the bathroom, laundry room, sun room, basement or garage
- Revolutionary ECM motor with SmartFlow™ Technology ensures optimal CFM output
- Pick-A-Flow™ airflow selector (50-80-110 or 110-130-150 CFM models) combined with SmartFlow™ technology simplifies the selection process and ensures optimum performance to meet code and reduce callbacks
- Incorporates one 10W dimmable LED chip panel with <1W LED night light for warm, long-life energy efficient illumination (night light must be wired separately)
- Single-hinged Flex-Z Fast® bracket provides fast, flexible installation
- Elegant grille design compliments any room decor
- Can be used to comply with ASHRAE 62.2, LEED, ENERGY STAR®, Indoor airPlus, EarthCraft and JA8 compliant for CA Title 24

#### LED Lighting



INCLUDES: One 10W Dimmable LED chip panel with <1W LED night/3000 Kelvin Warm White/90 CRI/700 lumens/70 LPW/ ENERGY STAR® 2.2 certified/JA8 compliant for CA Title 24/50,000 hours rated average life.

\*Industry research indicates static pressure in typical installations ranges from 0.20" to 0.375".

## WhisperFit<sup>®</sup> DC

### Ideal Retrofit Fan/Adjustable Color Temperature Model

**FV-0511VFL1** 50, 80 or 110 CFM 4" or 3" Duct  
**FV-0511VFL1K**



#### WhisperFit DC Key Features

- Revolutionary ECM motor with SmartFlow™ Technology ensures optimal CFM output
- Built-in Pick-A-Flow™ airflow selector allows you to select your required airflow of 50, 80, or 110 CFM with a simple flip of a switch
- Lighted model incorporates one 10W dimmable LED chip panel with <1W LED night light for warm, long-life energy efficient illumination (night light must be wired separately)
- Adjustable Color Temperature model (FV-0511VFL1K) features three color temperatures of 3000K, 4000K, and 5000K which allows homeowners to match the light setting in the room
- Single-hinged Flex-Z Fast® bracket provides flexible, fast and easy installation
- Pre-installed alignment guides help guide adaptor assembly into place during installation for a tight precision fit
- Temporary clip molded into casing holds fan in place while installer fastens fan to can safely
- Plastic standard 4" adaptor with backdraft damper/shutter allows for better air tightness
- Can be used to comply with ASHRAE 62.2, LEED, IAP and California Title 24



LED Lighting - Adjustable Color Temperature Model (FV-0511VFL1K) (Fan/LED with Adjustable Color Temperatures) combines energy efficient LED lighting with colorful room ambiance options of your choice.

A switch under the grille lets occupants choose from three different LED color temperatures to match your décor in the room:

- Cool White 5000K
- Bright White 4000K
- Warm White 3000K



INCLUDES: One 10W Dimmable LED chip panel with <1W LED night/3000 Kelvin Warm White/90 CRI/700 lumens/70 LPW/ENERGY STAR® 2.2 certified/JA8 compliant for CA Title 24/50,000 hours rated average life.

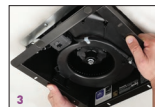
#### Installation is as Easy as 1-2-3!



Single-Hinged Flex-Z Fast® bracket installed with existing 3" duct and wiring



Fan can be installed with motor in a 2 x 6 joist using the existing duct and included 4" to 3" duct adapter



Fan is installed and ready to go!



**Flex-ZFast<sup>®</sup>**



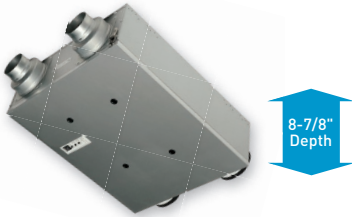
**Flex-ZFast<sup>®</sup>**



## Intelli-Balance<sup>™</sup> 100

### Cost Effective, Code Compliant ERV for Any Climate Zone

- FV-10VEC2** (Cold Climate) 50 to 100 CFM Four 4" or 6" Ducts  
**FV-10VE2** (Temperate Climate) 50 to 100 CFM Four 4" or 6" Ducts



FV-10VE2  
FV-10VEC2

#### HEALTHY AIR, HEALTHY HOME

True Flow ratings at **0.4"** static pressure provides powerful airflow to assure code compliant, healthy homes.\*

### Intelli-Balance 100 Key Features

- Engineered for use in any North America climate zone
- Two (2) ECM motors with Smart Flow™ technology ensure optimum CFM output
- Pick-A-Flow™ airflow selector (50 to 100 CFM) provides customizable airflow to create balanced, positive or negative pressure in the home
- Exclusive built-in ASHRAE 62.2 timing function helps ensure code compliance
- Occupant controllable Boost function. Moves fan speed to high when activated
- MERV 8 filter included; optional MERV 8 and MERV 13 replacements available
- High efficiency exchange capillary core recovers heat and moisture
- Wall or ceiling mount; connect to existing ductwork or use as a standalone whole-house ventilation solution
- Can be used to meet green building code requirements and helps minimize the impact to your HERS index
- Model FV-10VEC2 meets Ontario, ENERGY STAR® and Novoclimat requirements\*\*

### Accessories (Sold Separately):



FV-FL0810VE1: MERV 8 Replacement Filter  
 FV-FL1310VE1: MERV 13 Replacement Filter

\*Industry research indicates static pressure in typical installations ranges from 0.20" to 0.375".

\*\*Meets strict energy efficiency guidelines set by Natural Resources Canada and is ENERGY STAR® certified for the Canadian market only.

## Intelli-Balance<sup>™</sup> 200

### Cost Effective, Code Compliant ERV for Any Climate Zone

- FV-20VEC1** 60 to 200 CFM Four 6" Ducts



FV-20VEC1

#### HEALTHY AIR, HEALTHY HOME

True Flow ratings at **0.4"** static pressure provides powerful airflow to assure code compliant, healthy homes.\*

### Intelli-Balance 200 Key Features

- Engineered for use in any North America climate zone
- Two (2) ECM motors with Smart Flow™ technology ensure optimum CFM output
- Pick-A-Flow™ airflow selector (60 to 200 CFM) provides customizable airflow to create balanced, positive or negative pressure in the home
- Exclusive built-in ASHRAE 62.2 timing function helps ensure code compliance
- MERV 13 filter included; optional MERV 8 and MERV 13 replacements available
- High efficiency exchange capillary core recovers heat and balances moisture
- Total Recovery Efficiency: 70% at 95°F with net air flow of 71 CFM
- Wall or ceiling mount; connect to existing ductwork or use as a standalone whole-house ventilation solution
- Can be used to meet green building code requirements and helps minimize the impact to your HERS index
- Optional LCD wired wall control panel (FV-SW20VEC1) provides ERV status and remote control



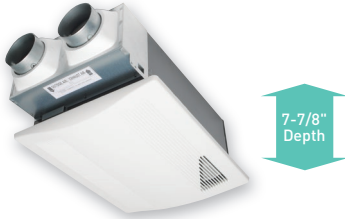
LCD Wall Control Panel  
 FV-SW20VEC1 (Sold Separately)



## WhisperComfort<sup>®</sup>

### Economical and Easy to Install Balanced Air Solution

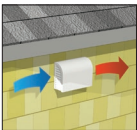
**FV-04VE1** 40/20 CFM or 20/10 CFM Two 4" Ducts



### WhisperComfort Key Features

- ERV balances air pressure by supplying fresh exterior air while exhausting stale interior air
- Low-rate continuous ventilation ideal for multi-family dwellings
- UL listed for ceiling or wall mount, making it ideal for multi-family applications
- MERV 6 supply filter and damper employed
- Exchange capillary core recovers temperature and moisture
- Dual setting air volume for 40/20 or 20/10 CFM
- Ideal for new air-tight houses built to meet energy-efficiency standards
- Compact size fits in walls and ceilings, and 2 x 8 construction
- Sensible Energy Recovery 66%
- Latent Energy Recovery 32%
- Does not require a condensate line or drain
- Can be used to comply with ASHRAE 62.2, LEED, Indoor airPlus, CALGreen and California Title 24

### Supply and exhaust air flows through a single exterior opening



FV-WC04VE1  
Optional Exterior Wall Cap



FV-EB04VE1  
Optional Elbow

## WhisperWarm<sup>®</sup>DC

### Quiet Fan/Heater/Light Solution

**FV-0511VH1** 110 CFM 4" Duct  
**FV-0511VHL1** 110 CFM 4" Duct



### WhisperWarm DC Key Features

- Precision spot ventilation fan/heater combo pairs a powerful ECM motor with SmartFlow™ technology for optimum airflow and CFM output
- Built-in 1600W Positive Temperature Coefficient heater delivers instant warm-up for ultimate comfort and Panasonic's legendary long-life operation
- Unique, adjustable grille with built-in diffuser offers superior directional heating
- Pick-A-Flow™ and SmartFlow™ work together to assure required airflow (50-80-110 CFM), optimal exhaust power, code compliance and reduced callbacks
- Optional 10W dimmable LED chip panel with <1W LED night light is JA-8 compliant for CA Title 24 (night light wired separately)
- Flex-Z Fast® bracket enables fast, flexible room side installation
- Can be used to comply with ASHRAE 62.2



### LED Lighting:

Includes a 10 Watt Dimmable LED chip panel/3000 Kelvin Warm White/>90CRI/750 lumens/>70 LPW/ ENERGY STAR 2.0 certified/JA-8 compliant for CA Title 24/50,000 hours rated average life /<1W LED night light included.

## WhisperWall™ VENTILATION FAN

### Through the Wall Spot Ventilation Solution

**FV-08WQ1** 70 CFM 8" Duct



#### WhisperWall Key Features

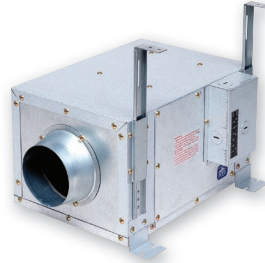
- UL listed for through-the-wall application
- 10" galvanized sleeve and steel exterior hood included
- Can be used to comply with ASHRAE 62.2, LEED, Indoor airPlus and California Title 24



Exterior Hood included

## WhisperLine™ VENTILATION FAN

**FV-10NLF1E** 120 CFM 4" Duct  
**FV-20NLF1** 240 CFM 6" Duct  
**FV-30NLF1\*** 340 CFM 6" Duct  
**FV-40NLF1\*** 440 CFM 8" Duct



### Remote Mount, In-line Spot Ventilation Solution

#### WhisperLine Key Features

- Remote mount in-line fan for single or multiple inlets
- Insulated housing to prevent condensation and noise
- Tapered duct adapter for easy connection
- 5 positions for installation
- Joist or truss attachment brackets included
- Suspension brackets included
- Can be used to comply with ASHRAE 62.2, LEED, Indoor airPlus and California Title 24

\*FV-30NLF1 and FV-40NLF1 do not comply with the ENERGY STAR® 4.0 requirement for increased efficiency (CFM/Watt).



\*Complete Installation Kit Specifications on pages 68-69

## WhisperFresh™ Select VENTILATION FAN

**FV-15NLFS1** 50-60-70-80-90-100-110-130-150 CFM  
6" Duct



FV-15NLFS1

### HEALTHY AIR, HEALTHY HOME

True Flow ratings at **0.4"** static pressure provide powerful airflow to assure code compliant, healthy homes.\*

### WhisperFresh Select Key Features

- Customizable fresh air supply fan featuring Pick-A-Flow™ technology – one fan, you choose the CFM (50-150 CFM, in 10 CFM increments)
- Intelligent ECM motor with SmartFlow(TM) technology provides optimum CFM output for precision whole-house supply ventilation
- Operates as a stand-alone filtered supply fresh air solution to meet ASHRAE 62.2 requirements for make-up/supply air
- Capable of communicating with Panasonic's acclaimed WhisperGreen® Select to create a balanced ventilation solution
- Incorporates adjustable high humidity and low temperature dials for easy adjustments in any climate zone
- HVI-Certified for use with MERV 8 and MERV 13 filters. MERV 13 filter included, MERV 8 and MERV 13 replacements available
- HVI-Certified performance with MERV 13 filter installed
- Can be used to comply with ASHRAE 62.2, LEED and CA Title 24



#### CFM

Can be selected for 50/60/70/80/90/100/110/130/150 CFM (9 settings).



#### Humidity Setting

Customizable fresh air supply based on humidity conditions of incoming air.



#### Temperature Setting

Customizable low temperature setting will shut fan off when incoming supply air is too cold.



#### Reset Button

Resets every time customer changes filter.

#### Accessories (Sold Separately):



#### FV-FL0815NL1:

MERV 8 Replacement Filter



#### FV-FL1315NL1:

MERV 13 Replacement Filter

\*Industry research indicates static pressure in typical installations ranges from 0.20" to 0.375".



## Recessed Inlet™

### Design Solution for Exhaust or Supply Inlets

**FV-NLF46RES** 4" or 6" Duct



#### Recessed Inlet Key Features

- Includes (1) replaceable, 8W ENERGY STAR 2.0 certified, GU24 base LED lamp, JA-8 compliant for CA Title 24 and Title 20
- Multi-purpose exhaust or supply recessed inlet is ideal for use with remote mount in-line fans and H/ERVs
- Can be used as a light only option matching the WhisperRecessed® LED fan with a dimmable LED light
- Incorporates an architectural grade recessed can light design
- Beautiful lighting with 6" aperture and advanced luminaire design
- IC rated



#### LED Lamp

INCLUDED: (1) 8 Watt GU24 base LED lamp, /2700 Kelvin Warm White/>92CRI/720 lumens/90 LPW/ ENERGY STAR 2.0 certified, JA-8 compliant for CA Title 24 and Title 20, 25,000 rated average life.

## WhisperControl™

Preset Countdown and Hourly Timer

On/Off—

**FV-WCD01-W** (White),

**FV-WCD01-A** (Light Almond)

On/Off/Light—

**FV-WCD02-W** (White),

**FV-WCD02-A** (Light Almond)



**FV-WCD01-W**

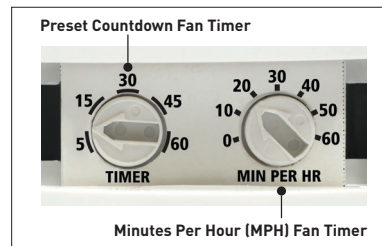


**FV-WCD02-A**

#### Preset Countdown and Hourly Timer Key Features

- Preset the fan timer anywhere from 5-60 minutes
- Adjustable Minutes Per Hour (MPH) Fan Timer ensures consistent and controlled ventilation throughout the day for compliance with ASHRAE 62.2
- Manual On/Off Fan Control
- Blue LED indicates when the fan is on
- Commercial Grade, 8 Amp max load, 2 year limited warranty
- Engineered to efficiently control current LED lighting and DC motor loads
- For indoor use. Includes matching wall plate
- Can be used to comply with ASHRAE 62.2, LEED and ENERGY STAR® 3.0

#### Timer Settings



## WhisperControl™

Condensation Sensor Plus

On/Off—

**FV-WCCS1-W** (White),

**FV-WCCS1-A** (Light Almond)

On/Off/Light—

**FV-WCCS2-W** (White),

**FV-WCCS2-A** (Light Almond)

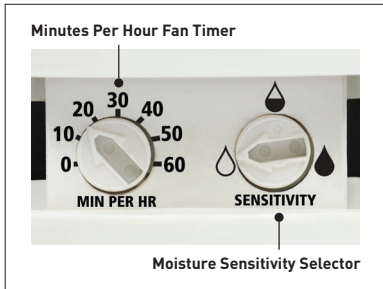


FV-WCCS1-W



FV-WCCS2-A

### Timer and Sensor Settings



### Condensation Sensor Plus Key Features

- Intelligent and advanced sensor technology monitors humidity and temperature to anticipate dew point, automatically operating the fan to control moisture
- Automatic seasonal adaptability with optional Moisture Sensitivity Selector allows fine tuning for dry or moist environments
- Adjustable Minutes Per Hour (MPH) Fan Timer ensures consistent and controlled ventilation throughout the day for compliance with ASHRAE 62.2
- Automatic Fan Control – 30 minute countdown timer initiates after moisture returns to normal levels
- Manual Fan Control – 20 minute countdown timer initiates once fan is turned on
- Blue LED indicates when the fan is on
- Commercial Grade – 8 Amp max load, 2 year limited warranty\*
- Engineered to efficiently control current LED lighting and DC motor loads
- For indoor use. Includes matching wall plate
- Can be used to comply with ASHRAE 62.2, LEED, ENERGY STAR® 3.0 and CALGreen

**\*One year additional fan warranty available when a Panasonic WhisperCeiling, WhisperValue DC or WhisperFit DC fan or fan/light is controlled by a Panasonic Condensation Sensor Plus.**

### Moisture Sensitivity Selector Settings



**High Sensitivity** – Setting the Condensation Sensor Plus to it's most sensitive setting covers the widest range of humidity. This is a setting for dryer climates and/or larger rooms. In a very dry environment, higher sensitivity is needed.



**Average Sensitivity** – The Condensation Sensor Plus comes factory set to this most common setting.



**Low Sensitivity** – The least sensitive setting is used in hotter and more humid climates. In a very moist environment, low moisture sensitivity may be needed to avoid excessive fan run-time.

**ecoswitch™**

**FV-WCSW11-W** (White)  
**FV-WCSW11-A** (Light Almond)



**1 Function EcoSwitch Key Features**

- Fan On/Off Switch
- Engineered to efficiently control current LED lighting and DC motor loads
- Back and side wiring terminals accept both solid and stranded wire to ease installation
- Full-rated current capacity with fluorescent or resistive loads. Motor capacity is 80% of switch rating
- Fits single gang box / Includes matching wall plate
- Commercial Grade



**ecoswitch™**

**FV-WCSW21-W** (White)  
**FV-WCSW21-A** (Light Almond)



**2 Function EcoSwitch Key Features**

- Multi-switch combination devices save space and add convenience
- Engineered to efficiently control current LED lighting and DC motor loads
- Common feed shunted internally to all switches
- Elegant decorator styling provides multiple controls in a single-gang wall box
- Fits single gang box / Includes matching wall plate
- Commercial Grade



**ecoswitch™**

**FV-WCSW31-W** (White)  
**FV-WCSW31-A** (Light Almond)



**3 Function EcoSwitch Key Features**

- Multi-switch combination devices save space and add convenience
- Engineered to efficiently control current LED lighting and DC motor loads
- Common feed shunted internally to all switches
- Elegant decorator styling provides multiple controls in a single-gang wall box
- Fits single gang box / Includes matching wall plate
- Commercial Grade





## ecoswitch™

**FV-WCSW41-W** (White only)

Designed for model FV-11VHL2  
Heater/Fan/Light/Night-light



### 4 Function EcoSwitch Key Features

- Single pole/double throw on-off-on switch, two single pole on-off switches
- Multi-switch combination saves space and adds convenience
- Common feed shunted internally to all switches
- Commercial grade
- Includes matching wall plate
- Elegant styling provides multiple controls in a single-gang wall box
- 2 year limited warranty



## SmartExhaust™

Controls

**FV-WCPT1-W**

Fan/Light Control  
Delay Timer  
Wall plate not included



### SmartExhaust™ Key Features

- Earn LEED and ENERGY STAR® points for enhanced exhaust ventilation
- Replaces both fan and light switches for one easy operation
- Microprocessor technology provides precise ventilation times
- Programmable DELAY and VENTILATION settings
- Excess manual and/or delay operation is subtracted from the next hours programmed ventilation time
- Works with ALL incandescent, CFL, fluorescent and LED lights
- Make standard bath fans ASHRAE 62.2 complaint when used with ASHRAE 62.2 complaint fans

### SmartExhaust™ Settings:

**VENTILATION** setting allows the user to set the number of minutes per hour the fan should run.

**DELAY** setting allows the user to set the number of minutes the fan should run after the bathroom light has been turned off. This setting provides additional run time for the fan to complete the remaining necessary ventilation after use. **SmartExhaust™** replaces an existing switch, there are no additional labor costs required for installation. Simple and economical fan and light operation is provided by one switch.

## EZSoffitVent™

Versatile Soffit Termination System

**EZSV14**



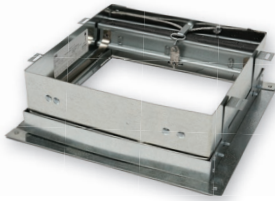
### EZ Soffit Vent Key Features

- Patented termination system ideal for new residential construction
- First-to-market, HVI-Certified soffit vent helps optimize airflow by letting you complete all ducting before soffit panel install
- Designed to work with ventilation fans up to 110 CFM using 4" ductwork
- Improves overall fan performance and reduces call backs due to poor airflow
- Versatile product design can be used for other applications such as: clothes dryer exhaust (as-shipped), fireplace combustion air intake, supply-only ventilation system intake up to 120 CFM and balanced ventilation systems (HRV/ERV) exhaust and intake up to 120 CFM<sup>1</sup>
- Simple installation helps reduce total installed cost (callbacks, parts and labor)
- Unique design eliminates water intrusion costs associated with roof and/or wall terminations
- Snap-fits easily into mounting bracket and can be rotated 180 degrees to align with ducting
- Low-resistance backdraft damper eliminates cold drafts and improves blower door test results

<sup>1</sup>With any use for intake air, you must remove the damper. It's also recommended you add an insect screen (not included).

## Ceiling Radiation Damper

PC-RD05C5



**Damper Model**  
PC-RD05C5

**UL Approved for the Following Fan Models:**

WhisperGreen Select, WhisperCeiling DC, WhisperCeiling 50-150 CFM, WhisperSense DC, WhisperFit EZ, WhisperFit DC, WhisperValue DC

### Radiation Damper Key Features

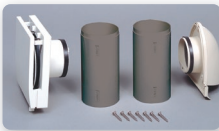
- One damper for both Combustible and Non-Combustible Assembly Ratings
- Damper allows for two-stage construction; fan housing and damper sleeve during framing, fan/motor/damper installation after finishes
- Damper allows access to fan/motor/damper for maintenance
- Compatible with most Panasonic 10 1/4" 50 – 150 CFM fans, fan lights and fan with motion sensor
- Galvanized steel frame with 165°F fusible link
- High temperature, non-asbestos, reinforced fiber thermal fabric damper

- UL and Warnock Hersey 555C classification for 1, 2 or 3 hour Non Combustible Assemblies
- UL 555C classification for the following 1 hour UL Wood Truss Assembly Ratings: L521, L528, L546, L558, L562, L574, L576, L581, L583, L585, M509; P522, P-533, P-538, P-545 and P-547



## Passive Inlet Vent

FV-GKF32S1



### Inlet Vent Key Features

**Panasonic Passive Inlet provides make-up air to help balance indoor vs. outdoor air pressure.**

- Foam pad reduces outdoor noise and condensation
- Insulation lining to prevent condensation
- Durable ABS and PP resin body
- 7 stainless steel installation screws included
- Sturdy open/close lever
- 2-position air delivery

	Passive Inlet	FV-GKF32S1
Specifications	Air Volume Positions	2
	CFM Settings	12 & 18
Features	Open/Close Louver Setting	Yes
	Washable Air Filter	Yes
	Bug Screen	Yes
	3" x 12" Sleeve Included	Yes
Installation	Body	ABS & PP
	Wall Opening [diameter]	3 inch
	Installation Screw Included	Yes

## Designer Grilles

FV-GL3TDA



FV-GL3TDB



### Designer Grille Key Features

- Easy and affordable to change
- Change your grille to fit your room decor without compromising the performance and quality of the unit
- **Applicable Models**  
**WhisperCeiling DC:** FV-0511VQ1, FV-1115VQ1, FV-0511VQL1, FV-1115VQL1  
**WhisperFit EZ:** FV-08-11VF5

Characteristics	FV-GL3TDA	FV-GL3TDB
Grille Size (inches sq.)	13	14-1/5
Shipping Gross Weight (lbs)	1.1	1.3
Trend Style Category	Traditional	Traditional
Material	ABS	ABS
UL Approved <sup>1</sup>	Yes	Yes
HVI Certified <sup>1</sup>	Yes	Yes
Mfg. in ISO 9001 Certified Facility	Yes	Yes

<sup>1</sup> Approved with applicable models.