

# Barrette

OUTDOOR LIVING® 



**rdi**® collection  
2022 RAILING CATALOG



THE OUTSIDE COMPANY™



## Get outside and live your best life

We realize that inside each of us, there is an Outside Side™ — a side begging to get out there, to be outgoing, to break out of our same old inside routines and to outdo ourselves with our outdoor space. At Barrette Outdoor Living, we help your Outside Side run free with products that constantly beckon you out there. We know there is an Outside Side in everyone and we're firm believers that it's our best side because we're The Outside Company™.

### Your vision

Your home is more than just a space. It's where you raise a family. It's where friends gather, and seasons come and go. It is a living, breathing picture of your life. With our diverse and flexible range of outdoor living solutions, Barrette Outdoor Living can help you bring any vision to life.

### Our mission

Barrette Outdoor Living strives to be the best in product design and innovation, inspired by those who work with and for us to create superior outdoor living solutions both professionals and homeowners demand. At the core of our business is a place where integrity, ingenuity and skill meet.



## Our promise to you

At Barrette Outdoor Living, we believe in making things right. We proudly stand behind our products by providing dedicated support, superior customer service and product warranties that feature some of the most comprehensive coverage in the industry. With decades of experience behind us, we are quite confident in the craftsmanship and quality of our products, but we also realize things happen. If that thing happens, we promise to make it right within the constraints of our warranties.



Leading the way



Crafting quality



Making it right



Being responsible

Barrette Outdoor Living can help make your outdoor vision a reality. As the leading North American supplier of exterior home products, we manufacture and distribute fencing, railing, decking and other outdoor products. **To learn more, visit us at [barretteoutdoorliving.com/warranty](https://barretteoutdoorliving.com/warranty)**

# rdi® collection

Barrette Outdoor Living's most premium collection of railing with the widest range of materials, designs and profiles — perfect for both residential and commercial settings.

## Versatility in design

Offering mix-and-match options — the RDI® Collection of vinyl, aluminum, steel and composite railing offers a variety of infills — from contemporary cable or glass infills, to more traditional round or square infills. And if you are looking for privacy, we have a modern privacy railing in a variety of colors that will keep you covered. Complete your project by adding ambient lighting with our easy-to-install LED lights — the final touch to create a serene outdoor evening experience.



### Code compliant

RDI Collection railings meet or exceed building requirements and are code compliant. Our ADA handrails ensure safety for everyone.



### Easy to install

RDI Collection railings either come pre-assembled or require minimal assembly, making our railing easy to install.



### Warranty

RDI Collection railings are made with durable materials and are backed by our Transferable Limited Lifetime Warranty\* — as a part of our promise to you.

\*Steel railings offer a 15 year warranty. For full warranty details go to [barretteoutdoorliving.com/warranty](http://barretteoutdoorliving.com/warranty)



## Table of Contents

### RDI COLLECTION RAILING

TRANSFORM®	6
PRIVACY RAIL™	12
AVALON ALUMINUM RAILING®	16
METALWORKS EXCALIBUR®	26
ENDURANCE® ORIGINAL RAIL™	32
FINYL LINE™	40
TITAN PRO RAIL®	50

### COMPLEMENTARY ACCENTS

VINYL ADA HANDRAIL	56
ALUMINUM ADA HANDRAIL	60
LIGHTING	64
DECORATIVE SCREEN PANELS	68
LATTICE	72

# TRANSFORM®

Transform Composite Railing has the look and feel of a wood railing, but provides superior resistance to moisture, mold and warping. Made with Compositore® — a material that contains no wood or organic fibers — Transform features a lightly textured, durable finish. Transform offers the ultimate in customization with multiple top rail options and infill styles, including traditional square balusters, black round aluminum balusters and cable.



Transform railing in Satin White with square balusters and Aspire top rail.

## PRODUCT BENEFITS

- Square and round aluminum balusters securely fit into rails without using screws
- Cable infill option attaches easily to posts
- Universal bracket for level, stair and angled applications
- Code compliant
- Made in the USA

## HOMEOWNER BENEFITS

- Does not warp, splinter or rot
- Easy to maintain
- Long lasting color retention
- Transferrable Limited Lifetime Warranty

## DESIGN VERSATILITY

- Hidden brackets provide a clean, finished look
- 4 top rail options
- 3 infill options
- Available in 4 colors



### COMPOSCORE®

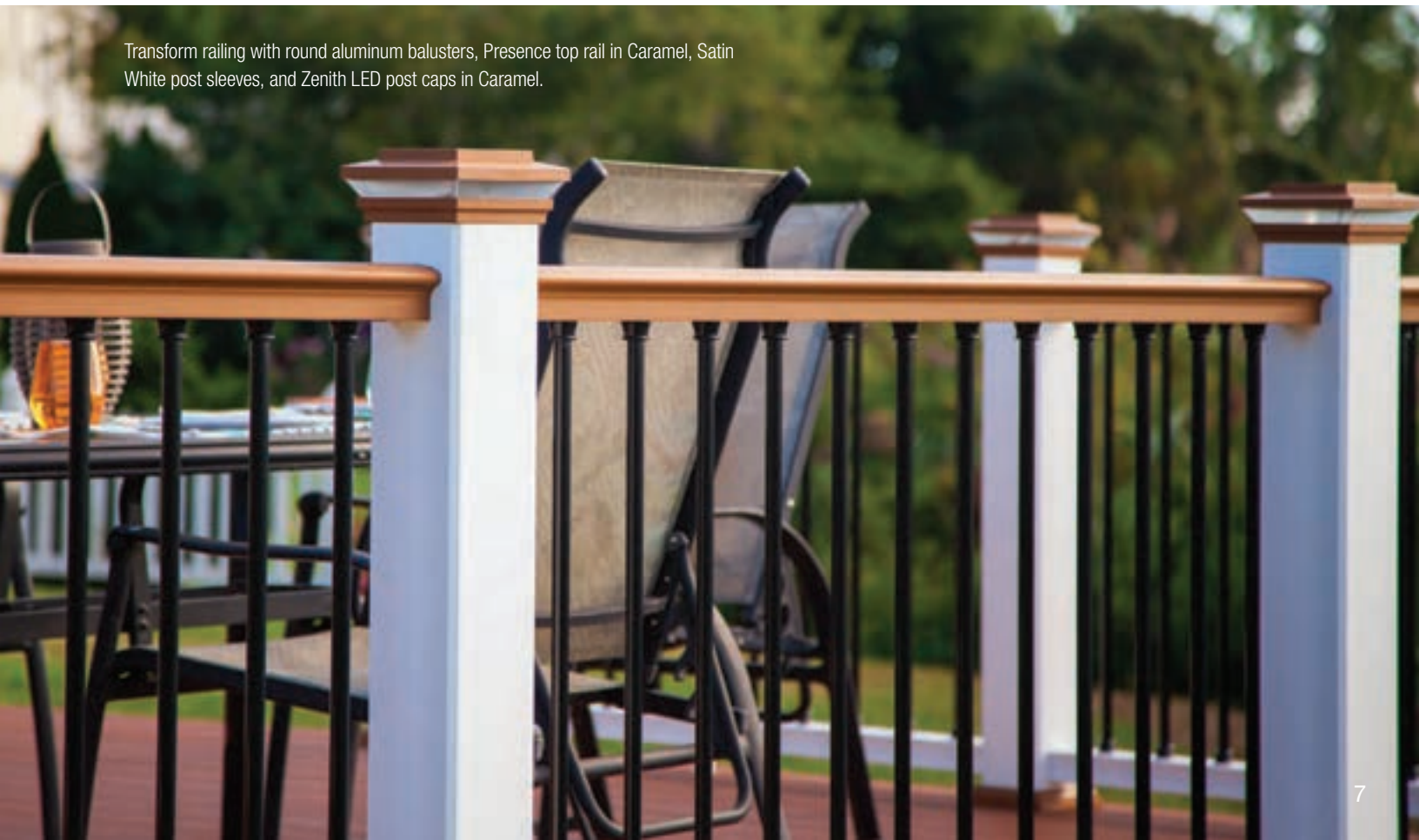
Composicore used in our railing products, contains no wood fibers, making it water resistant meaning it will not rot, splinter, warp or stain and is resistant to mold — keeping your railing beautiful for years to come.



### SOLARGUARD®

SolarGuard technology provides fade resistance so that your outdoor living products will maintain a like-new finish for years to come.

Transform railing with round aluminum balusters, Presence top rail in Caramel, Satin White post sleeves, and Zenith LED post caps in Caramel.



**STRUCTURAL POSTS**

Description	Flush Mount	Fascia Mount
Structural Post for 36" Railing Height	<b>73019022</b>	<b>73019023</b>
Structural Post for 42" Railing Height	<b>73019024</b>	<b>73019025</b>
5" x 5" Post Inserts*	<b>73019139</b>	

**POST SLEEVES**

Description	Satin White	Caramel	Wheat	Ironstone
5" x 5" x 39" Post Sleeve – Boxed	<b>73014245</b>	<b>73019143</b>	<b>73019142</b>	<b>73019141</b>
5" x 5" x 54" Post Sleeve – Boxed	<b>73014244</b>	<b>73014637</b>	<b>73019079</b>	<b>73014638</b>
5" x 5" x 120" Post Sleeve – Boxed	<b>73014246</b>	<b>N/A</b>	<b>N/A</b>	<b>N/A</b>



Structural Post –  
Flush Mount



Structural Post –  
Thru/Fascia Mount



Post Insert



Post Sleeve

\*Post sleeves come with two 5" x 5" post inserts; more can be purchased for use when sleeving 4" x 4" wooden posts with the 120" post sleeve cut to size.

**POST CAPS & TRIM RINGS**

Description	Satin White	Caramel	Wheat	Ironstone
5" x 5" Pinnacle Post Cap	<b>73019127</b>	<b>73019130</b>	<b>73019129</b>	<b>73019128</b>
5" x 5" Pinnacle LED Post Cap (0.80W)	<b>73019361</b>	<b>73019364</b>	<b>73019363</b>	<b>73019362</b>
5" x 5" Zenith Post Cap	<b>73004495</b>	<b>73004492</b>	<b>73004494</b>	<b>73004493</b>
5" x 5" Zenith LED Post Cap (0.80W)	<b>73019365</b>	<b>73019368</b>	<b>73019367</b>	<b>73019366</b>
5" x 5" Trim Ring	<b>73019038</b>	<b>73014643</b>	<b>73019040</b>	<b>73019039</b>



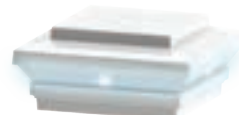
Pinnacle Post Cap



Pinnacle LED  
Post Cap



Zenith Post Cap



Zenith LED  
Post Cap



Trim Ring



**RAIL KITS**

DESCRIPTION	Satin White
6' x 36" Level Rail Kit with Square Balusters	<b>73019032</b>
8' x 36" Level Rail Kit with Square Balusters	<b>73019033</b>
6' x 42" Level Rail Kit with Square Balusters	<b>73019035</b>
8' x 42" Level Rail Kit with Square Balusters	<b>73019036</b>
6' x 36" Stair Rail Kit with Square Balusters	<b>73019034</b>
6' x 42" Stair Rail Kit with Square Balusters	<b>73019037</b>

Rail kits include balusters, top and bottom beams, bottom rail, brackets, support foot and hardware. Top rail sold separately.

**BEAM KITS – FOR LEVEL OR STAIR**

Description	Satin White	Caramel	Wheat	Ironstone
6' Beam Kit for Square or Round Balusters	<b>73019061</b>	<b>73019063</b>	<b>73019065</b>	<b>73019067</b>
8' Beam Kit for Square or Round Balusters	<b>73019062</b>	<b>73019064</b>	<b>73019066</b>	<b>73019068</b>
6' Beam Kit for Cable Rail	<b>73019347</b>	<b>73019353</b>	<b>73019349</b>	<b>73019351</b>
8' Beam Kit for Cable Rail	<b>73019348</b>	<b>73019354</b>	<b>73019350</b>	<b>73019352</b>

Cable rail must be installed using a 4" x 4" wooden post to support the cable tension. Bottom rail included in beam kits, but optional for cable installation.

Beam kits include top and bottom beams, bottom rail, brackets, support foot, mid-baluster support (cable rail kits only) and hardware. Top rail and balusters sold separately.



1 1/8" Square Balusters



3/4" Black Round Aluminum Balusters



1/8" Cable Rail Infill

**1 1/8" SQUARE BALUSTERS**

Description	Satin White	Caramel	Wheat	Ironstone
36" Square Baluster – Level – 10 Pack	<b>73019045</b>	<b>73019049</b>	<b>73019053</b>	<b>73019057</b>
42" Square Baluster – Level – 10 Pack	<b>73019046</b>	<b>N/A</b>	<b>N/A</b>	<b>N/A</b>
36" Square Baluster – Stair (32°) – 10 Pack	<b>73019047</b>	<b>73019051</b>	<b>73019055</b>	<b>73019059</b>
42" Square Baluster – Stair (32°) – 10 Pack	<b>73019048</b>	<b>N/A</b>	<b>N/A</b>	<b>N/A</b>

15 balusters needed for a 6' kit, 20 balusters needed for an 8' kit.

<b>3/4" ROUND ALUMINUM BALUSTERS &amp; ACCESSORIES</b>	
Description	Black
36" Round Aluminum Baluster – 10 Pack	<b>73019041</b>
42" Round Aluminum Baluster – 10 Pack	<b>73019042</b>
Aluminum Baluster Shoes – Level – (box of 20 for 10 balusters)	<b>73019043</b>
Aluminum Baluster Shoes – Stair – (box of 20 for 10 balusters – for angles from 32° to 38°)	<b>73019044</b>

15 balusters needed for a 6' kit, 20 balusters needed for an 8' kit.

<b>CABLE RAIL INFILL &amp; ACCESSORIES</b>		
Description	Level	Stair
Cable Fitting for 36" Finished Height Installation – Box of 20 (10 sets of fittings)	<b>73019357</b>	<b>73019358</b>
Cable Fitting for 42" Finished Height Installation – Box of 24 (12 sets of fittings)	<b>73019359</b>	<b>73019399</b>
Cable Wire – 100' Length Spool	<b>73019360</b>	
Cable Wire – 500' Length Spool	<b>73019381</b>	
Cable Release Key	<b>73025484</b>	
E-Z Clean Cable Cleaner and Protectant	<b>73040274</b>	

Cable Rail must be installed using a 4" x 4" wooden post to support the cable tension. Bottom rail included in beam kits, but optional for cable installation.

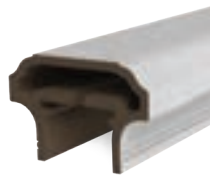
<b>TOP RAILS</b>				
Description	Satin White	Caramel	Wheat	Ironstone
6' Transform Top Rail – Aspire	<b>73019069</b>	<b>73019075</b>	<b>73019071</b>	<b>73019073</b>
8' Transform Top Rail – Aspire	<b>73019070</b>	<b>73019076</b>	<b>73019072</b>	<b>73019074</b>
6' Transform Top Rail – Emerge	<b>73019080</b>	<b>73019086</b>	<b>73019082</b>	<b>73019084</b>
8' Transform Top Rail – Emerge	<b>73019081</b>	<b>73019087</b>	<b>73019083</b>	<b>73019085</b>
6' Transform Top Rail – Presence	<b>73019088</b>	<b>73019094</b>	<b>73019090</b>	<b>73019092</b>
8' Transform Top Rail – Presence	<b>73019089</b>	<b>73019095</b>	<b>73019091</b>	<b>73019093</b>
6' Transform Graspable Top Rail – For Stairs	<b>73019009</b>	<b>73019012</b>	<b>73019010</b>	<b>73019011</b>



Presence



Emerge



Aspire



Graspable Stair

For 45° angle railing, the Emerge top rail can be cut at 45° and installed. If using the Presence or Aspire top rail, the two adjacent rail sections must be cut at 22.5° and installed on posts mounted at 22.5°. Please contact our customer service department at 1-877-265-2220 for more information.

**GATE KITS**

Description	Satin White
36" Gate Kit	<b>73019237</b>
42" Gate Kit	<b>73019241</b>



Gate kits include 2 uprights, 2 white cross braces, black Barrette Outdoor Living hardware (2 hinges, 1 latch). Rail section and top rail sold separately. Gates cannot exceed 48" in opening width.

**LIGHTING ACCESSORIES**

Description	Satin White	Caramel	Wheat	Ironstone
5" x 5" Pinnacle LED Post Cap (0.80W)	<b>73019361</b>	<b>73019364</b>	<b>73019363</b>	<b>73019362</b>
5" x 5" Zenith LED Post Cap (0.80W)	<b>73019365</b>	<b>73019368</b>	<b>73019367</b>	<b>73019366</b>
Dome Light (0.80W) – SATIN WHITE	<b>73019407</b>			
Stair/Side Light (0.40W) – SATIN WHITE	<b>73019414</b>			
Flush Deck Light (0.40W)	<b>73019403</b>			
LED Under-Rail Lighting (92" strip – 3W)	<b>73019376</b>			
Bluetooth Transformer for LED Lighting	<b>73041277</b>			
Electrical Wire for LED Lighting – 2'	<b>73032449</b>			
Electrical Wire for LED Lighting – 5'	<b>73019375</b>			
Electrical Wire for LED Lighting – 7'	<b>73019373</b>			
Electrical Wire for LED Lighting – 9'	<b>73019374</b>			
2-Way Splitter	<b>73019370</b>			
5-Way Splitter	<b>73019371</b>			

Transformer is 50W and can be used with lighted post caps or under-rail lighting. Includes photocell, built-in dimmer, timer, remote and is Bluetooth capable. Download the "SmartPower50" app from the App Store or Google Play to control your lighting via your smartphone.



**EXTRA ACCESSORIES**

Description	
Transform Brackets – Set of 4	<b>73019126</b>
Transform Baluster Plugs for 1 1/8" Square Balusters – Bag of 20	<b>73019232</b>
96" Aspire/Presence Top Rail IBC Stiffener – Box of 4*	<b>73019002</b>
96" Emerge Top Rail IBC Stiffener – Box of 4*	<b>73019003</b>
72" Transform Top Rail Adapter for mix and match with MetalWorks Excalibur® (2 and hardware)	<b>73019235</b>
96" Transform Top Rail Adapter for mix and match with MetalWorks Excalibur® (2 and hardware)	<b>73019236</b>

\*For commercial railing heights of 42" with lengths over 91", the IBC Stiffener is required for code compliance.

# PRIVACY RAIL™

Privacy Rail provides a contemporary and modern look for decks or patios while offering the option of increased privacy for outdoor spaces. Powder coated aluminum framing provides strength and stability while a selection of vinyl infill boards lock securely together using our patented ClickConnect™ technology. An adapter kit that allows Decorative Screen Panels to be inserted into framing is also available — offering greater customization and design options.



Privacy Rail with Matte Black rail kits and Driftwood infill boards.

## PRODUCT BENEFITS

- Easy to assemble
- Vinyl infill boards lock securely together and fit tightly in post channels
- Code compliant
- Made in the USA

## HOMEOWNER BENEFITS

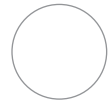
- Premium powder coating on aluminum rail kits and posts meets and exceeds AAMA 2604 specifications
- Advanced weather testing, including 10,000 hours of salt spray testing
- Easy to maintain
- Transferrable Limited Lifetime Warranty

## DESIGN VERSATILITY

- Adapter kit available to add Decorative Screen Panels\* to framing
- Complements other vinyl or aluminum railing products
- Rail kits and posts available in 2 colors

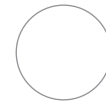


Matte Black



White

- Vinyl infill boards\* available in 5 colors



White



Khaki



Sand



Gray



Driftwood

\* Vinyl infill boards and Decorative Screen Panels sold separately.



### CLICKCONNECT™

The ClickConnect locking system connects vinyl boards together, without any gaps, for strength and durability against wind or other potentially damaging elements.



### SOLARGUARD®

SolarGuard technology provides fade resistance so that your outdoor living products will maintain a like-new finish for years to come.



Privacy Rail with Matte Black rail kits and Khaki infill boards.

RAIL KITS		
Description	White	Matte Black
6' Full Privacy Rail Kit (includes top rail, bottom rail and mid rail)	<b>73042844</b>	<b>73042828</b>
6' Half Privacy Rail Kit (includes top rail and bottom rail)	<b>73042845</b>	<b>73042827</b>

Full Privacy Rail Kits include top and bottom rails and mid rail. Half privacy kits include top and bottom rail. Infill boards sold separately.

Full privacy panel requires 11 infill boards, half privacy requires 5 for 36" finished height or 6 for 42" finished height. An installed section using 2 end posts measures a finished width of 6'. If advanced wind load (check local codes) requirements are necessary, then full privacy railing (6' tall) must have post spacing every 3'.

NEW! ADAPTER KITS FOR DECORATIVE SCREEN PANELS		
Description	White	Matte Black
3' x 6' Privacy Rail Adapter Kit (includes top, bottom and side insert adapters)	<b>73044016</b>	<b>73044015</b>

Adapter kit allows for 3' x 6' Decorative Screen Panels (sold separately) to be used as infills (can be used on top or bottom of Full Privacy Panel Kit, or with Half Privacy Kit. See page 70 for all 3' x 6' Decorative Screen Panel options.



POSTS		
Description	White	Matte Black
2" x 4" x 42" End Post – Surface Mount	<b>73042839</b>	<b>73042834</b>
2" x 4" x 42" Mid Post – Surface Mount	<b>73042840</b>	<b>73042832</b>
3.3" x 3.3" x 42" Corner Post – Surface Mount	<b>73042838</b>	<b>73042833</b>
2" x 4" x 72" End Post – Surface Mount	<b>73042842</b>	<b>73042837</b>
2" x 4" x 72" Mid Post – Surface Mount	<b>73042843</b>	<b>73042835</b>
3.3" x 3.3" x 72" Corner Post – Surface Mount	<b>73042841</b>	<b>73042836</b>

Posts come with pre-mounted base plates, 2-piece trim rings, infill board adapters\*, post hardware covers, channel cover\*\* and flat caps.

\*42" posts do not include 27" infill adapter channels.

\*\* 36" channel cover included in 72" posts only for a finished look transitioning from full to half privacy.



A post is needed at each end of your Privacy Rail panels. End posts can also be used to transition from privacy to our vinyl or aluminum railing. 42" posts can be used for half privacy sections 36" or 42", and 72" posts are used for full privacy sections.

### INFILL BOARDS

Description	
6" x 66" Vinyl Interlocking Boards for 6' Width – Pack of 6 – White	<b>73042846</b>
6" x 66" Vinyl Interlocking Boards for 6' Width – Pack of 6 – Khaki	<b>73043492</b>
6" x 66" Vinyl Interlocking Boards for 6' Width – Pack of 6 – Sand	<b>73043491</b>
6" x 66" Vinyl Interlocking Boards for 6' Width – Pack of 6 – Gray	<b>73044977</b>
6" x 66" Vinyl Interlocking Boards for 6' Width – Pack of 6 – Driftwood	<b>73044978</b>

Select color availability may vary. Please check with your dealer for full color availability.

### GATE KITS

Description	White	Matte Black
36" Height Gate Kit for Widths 36" – 48"	<b>73044982</b>	<b>73044979</b>
42" Height Gate Kit for Widths 36" – 48"	<b>73045453</b>	<b>73044980</b>
72" Height Gate Kit for Widths 36" – 48"	<b>73045454</b>	<b>73044981</b>
Gravity Latch	<b>73025491</b>	<b>73028060</b>
Two-Sided Locking Latch	<b>73050188</b>	<b>73050187</b>

Gate kits include uprights, top and bottom rails and gate hinges. 36" and 42" gate kits include compact butterfly hinges and 72" gate kit includes heavy-duty hinges, color matched to gate. Purchase your gate latch separately. Infill boards sold separately; 5 boards needed for 36" high gate kits, 6 boards needed for 42" high gate kits and 11 boards needed for 72" high gate kits. Boards and rails must be cut to desired width for finished gate width (36" to 48").



Full Privacy Gate (72")



Half Privacy Gate (36" or 42")

### TOUCH-UP PAINT

Description	White	Matte Black
Touch-Up Paint Aerosol (12 oz)	<b>73022328</b>	<b>73044481</b>
Touch-Up Paint Pen (1/3 fl oz)	<b>73022351</b>	<b>N/A</b>
Touch-Up Paint Bottle & Brush (1/2 fl oz)	<b>N/A</b>	<b>73044483</b>

# AVALON ALUMINUM RAILING®

Rust-resistant Avalon Aluminum Railing combines form, function and versatility — providing style, safety and security. The pre-assembled rail panels feature ProLock® locking strips that are designed to hold balusters securely in place. Avalon Aluminum Railing offers the ultimate in customization with three top rail options and four rail infill styles, including traditional square balusters, glass slats, cable and new this year — Decorative Screen Panels.



Avalon Aluminum Railing with Pellinore top rail in Matte Bronze.



## PRODUCT BENEFITS

- Panels with square balusters come pre-assembled
- Adapter available to convert railing from 36" to 42" for commercial applications
- Code compliant
- Assembled in the USA

## HOMEOWNER BENEFITS

- Cable and glass slat infill options provide unobstructed views
- Premium powder coating on aluminum framing meets and exceeds AAMA 2604 specifications
- Advanced weather testing, including 10,000 hours of salt spray testing
- Easy to maintain
- Transferrable Limited Lifetime Warranty

## DESIGN VERSATILITY

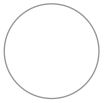
- NEW! Decorative Screen Panel infill option offers increased customization with multiple designs and colors
- Mix and match — perfect complement to Transform® composite railing
- 3 top rail options
- 4 infill options
- Available in 3 colors



Matte Black



Matte Bronze



White



### PROLOCK®

The ProLock locking strip secures railings by connecting them from the inside out, making a clean, seamless finish for your outdoor living space.



### SOLARGUARD®

SolarGuard technology provides fade resistance so that your outdoor living products will maintain a like-new finish for years to come.

Avalon Aluminum Railing in White with Tristan top rail and Optic Decorative Screen Panels in Black.

## Product Spotlight

NEW! Now Decorative Screen Panels can be used as infill for Avalon Aluminum Railing and it is code compliant!

ALUMINUM 2½" X 2½" ROUTED CABLE POSTS			
Description	White	Matte Black	Matte Bronze
2½" x 2½" x 39" End Post	73042977	73042976	73042978
2½" x 2½" x 39" Mid Post	73042983	73042982	73042984
2½" x 2½" x 39" Corner Post	73042995	73042994	73042996
2½" x 2½" x 39" Top Stair Post	73050039	73050038	73050040
2½" x 2½" x 42" Bottom Stair Post	73045616	73045615	73045617
2½" x 2½" x 42" Mid Stair Post	73050045	73050044	73050046
2½" x 2½" x 45" End Post	73042980	73042979	73042981
2½" x 2½" x 45" Mid Post	73042986	73042985	73042987
2½" x 2½" x 45" Corner Post	73042998	73042997	73042999
2½" x 2½" x 45" Top Stair Post	73050042	73050041	73050043
2½" x 2½" x 48" Bottom Stair Post	73045619	73045618	73045620
2½" x 2½" x 48" Mid Stair Post	73050048	73050047	73050049
2½" x 2½" x 52" Fascia End Post	73045622	73045621	73045623
2½" x 2½" x 52" Fascia Mid Post	73045628	73045627	73045629
2½" x 2½" x 52" Fascia Corner Post	73045625	73045624	73045626
2½" x 2½" x 52" Fascia Top Stair Post	73050051	73050050	73050052
2½" x 2½" x 55" Fascia Bottom Stair Post	73050079	73050077	73050080
2½" x 2½" x 55" Fascia Mid Stair Post	73050054	73050053	73050055

42" stair posts are designed to work with 39" top stair posts. 48" stair posts are designed to work with 45" top stair and level posts. 52" and 55" posts are for 42" fascia applications only.



Routed End Post



Routed Mid Post



Routed Corner Post

Use End, Mid and Corner posts for level applications. End posts have routed holes through post to anchor fitting at an end run of cable. Stair and fascia posts are also available.

**CABLE RAIL BEAM KITS**

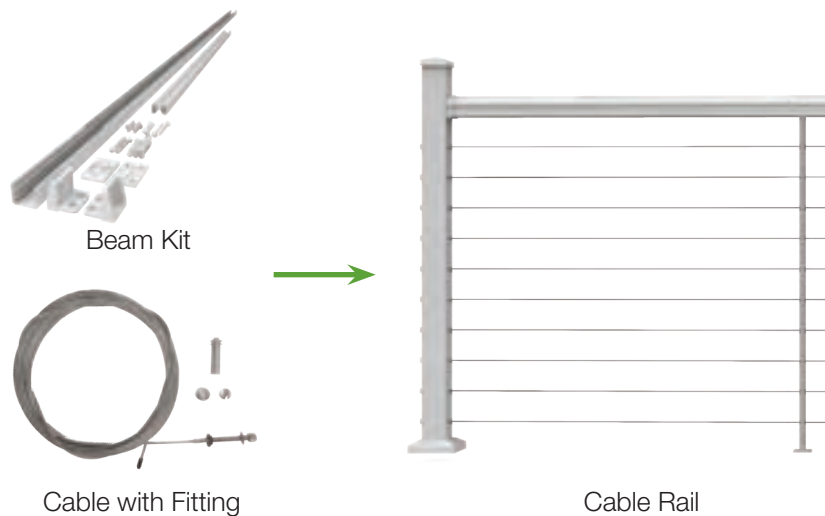
Description	White	Matte Black	Matte Bronze
6' x 36" Level Rail Beam Kit for Cable Rail	<b>73042965</b>	<b>73042964</b>	<b>73042966</b>
8' x 36" Level Rail Beam Kit for Cable Rail	<b>73042968</b>	<b>73042967</b>	<b>73042969</b>
6' x 42" Level Rail Beam Kit for Cable Rail	<b>73050027</b>	<b>73050026</b>	<b>73050028</b>
8' x 42" Level Rail Beam Kit for Cable Rail	<b>73050030</b>	<b>73050029</b>	<b>73050031</b>
6' Stair Rail Beam Kit for Cable Rail	<b>73050033</b>	<b>73050032</b>	<b>73050034</b>
8' Stair Rail Beam Kit for Cable Rail	<b>73050036</b>	<b>73050035</b>	<b>73050037</b>

Stair beam kits can accommodate both 36" and 42" finished heights. See product instructions for details. Cable components and Top Rail sold separately. See page 23 for Top Rail styles.

**CABLE COMPONENTS**

Description	
10' Cable with Fitting – Package of 1	<b>73042960</b>
20' Cable with Fitting – Package of 1	<b>73042961</b>
30' Cable with Fitting – Package of 1	<b>73042962</b>
50' Cable with Fitting – Package of 1	<b>73042963</b>
70' Cable with Fitting – Package of 1	<b>73050296</b>
Level Cable Lacing Needle	<b>73050056</b>
Corner Cable Lacing Needle	<b>73050057</b>
Cable Release Key	<b>73025484</b>
Cable Gripper Tool – Package of 2	<b>73050244</b>
E-Z Clean Cable Cleaner and Protectant	<b>73040274</b>

For a finished rail height of 36", 10 packages of cable with fitting will be needed. For a finished rail height of 42", 12 packages of cable with fitting will be needed.



## ALUMINUM 2½" X 2½" STANDARD POSTS

Description	White	Matte Black	Matte Bronze
2½" x 2½" x 39" Post	<b>73043054</b>	<b>73043046</b>	<b>73043050</b>
2½" x 2½" x 45" Post	<b>73043055</b>	<b>73043047</b>	<b>73043051</b>
2½" x 2½" x 45" Heavy Duty Post	<b>73043056</b>	<b>73043048</b>	<b>73043052</b>
2½" x 2½" x 60" Heavy Duty Post	<b>73043057</b>	<b>73043049</b>	<b>73043053</b>
2½" x 2½" x 45" Fascia Mount Post*	<b>73045504</b>	<b>73045503</b>	<b>73045505</b>
2½" x 2½" x 52" Fascia Mount Post*	<b>73045501</b>	<b>73045500</b>	<b>73045502</b>
2½" x 2½" x 65" Post Extension	<b>73050521</b>	<b>73050520</b>	<b>73050522</b>

\*Brackets to install fascia mount posts for end, mid or corner applications sold separately. See page 24 for fascia brackets.

Post Extension fits into 2½" standard posts to extend the height of the post to allow for patio lights to be hung above the railing.

## 2" X 2" OVER-THE-TOP POSTS

Description	White	Matte Black	Matte Bronze
2" x 2" x 33" Over-the-Top Post (for 36" finished height)	<b>73020642</b>	<b>73020646</b>	<b>73019470</b>
2" x 2" x 39" Over-the-Top Post (for 42" finished height)	<b>73020643</b>	<b>73020647</b>	<b>73019471</b>

Avalon panels must be cut up to 4" shorter than top rails pending install application. For 42" commercial height, over-the-top spans cannot exceed 5' in length between posts. Brackets sold separately – see page 23.

## ALUMINUM 4¼" X 4¼" POSTS/SLEEVES

Description	White	Matte Black	Matte Bronze
4¼" x 4¼" x 39" Post	<b>73041379</b>	<b>73041378</b>	<b>73041376</b>
4¼" x 4¼" x 45" Post	<b>73041383</b>	<b>73041382</b>	<b>73041380</b>
4¼" x 4¼" x 108" Porch Post – 5,000 lb capacity	<b>73041375</b>	<b>73041374</b>	<b>73041372</b>

4¼" x 4¼" x 108" post sleeves can be used as porch columns (5,000 lb load capacity); two mounting kits will be needed in this application.

## ALUMINUM 4¼" X 4¼" POST/SLEEVE ACCESSORIES

Description	White	Matte Black	Matte Bronze
Flat Post Cap for 4¼" x 4¼" Posts	<b>73041367</b>	<b>73041366</b>	<b>73041364</b>
Trim Ring for 4¼" x 4¼" Posts	<b>73041371</b>	<b>73041370</b>	<b>73041368</b>
Mounting Kit for 4¼" x 4¼" Posts (includes trim ring and mounting plate)	<b>73041363</b>	<b>73041362</b>	<b>73041360</b>

**NEW!**



2½" x 2½"  
Flush Mount Post

2½" x 2½"  
Fascia Mount Post

2½" x 2½"  
Post Extension

4¼" x 4¼"  
Posts/Sleeves

Flat Post Cap

Mounting Kit

**LEVEL RAIL PANELS**

Description	White	Matte Black	Matte Bronze
6' x 36" Level Rail Panel with Square Balusters	<b>73019269</b>	<b>73019285</b>	<b>73019458</b>
8' x 36" Level Rail Panel with Square Balusters	<b>73019270</b>	<b>73019286</b>	<b>73019464</b>
6' x 42" Level Rail Panel with Square Balusters	<b>73019273</b>	<b>73019289</b>	<b>73019459</b>
8' x 42" Level Rail Panel with Square Balusters	<b>73019274</b>	<b>73019290</b>	<b>73019465</b>

**STAIR RAIL PANELS**

Description	White	Matte Black	Matte Bronze
6' x 36" Stair Rail Panel with Square Balusters	<b>73019271</b>	<b>73019287</b>	<b>73019466</b>
8' x 36" Stair Rail Panel with Square Balusters	<b>73019272</b>	<b>73019288</b>	<b>73019468</b>
6' x 42" Stair Rail Panel with Square Balusters	<b>73019275</b>	<b>73019291</b>	<b>73019467</b>
8' x 42" Stair Rail Panel with Square Balusters	<b>73019276</b>	<b>73019292</b>	<b>73019469</b>

Rail panels include bracket kit (two top and two bottom brackets) with mounting hardware. Top rail sold separately – see page 23.

**NEW! 2-TO-3 RAIL ADAPTER**

Description	White	Matte Black	Matte Bronze
6' Rail Adapter	<b>73050440</b>	<b>73050438</b>	<b>73050442</b>
8' Rail Adapter	<b>73050441</b>	<b>73050439</b>	<b>73050443</b>



## NEW! BEAM KITS FOR DECORATIVE SCREEN PANEL INFILL

Description	White	Matte Black	Matte Bronze
6' x 36" Beam Kit for 3' x 6' Decorative Screen Panels (sold separately)	<b>73044011</b>	<b>73044009</b>	<b>73044010</b>

See page 70 for all 3' x 6' Decorative Screen Panel options.

## GLASS LEVEL RAIL KITS

Description	White	Matte Black	Matte Bronze
6' Beam Kit for Glass Slats (level only)	<b>73020648</b>	<b>73020652</b>	<b>73019454</b>
8' Beam Kit for Glass Slats (level only)	<b>73020649</b>	<b>73020653</b>	<b>73019460</b>

6' kits require 9 glass slats and 8' kits require 12 glass slats (sold separately). Top beam, bottom rail, bracket kit (4 level brackets and mounting hardware), support foot and top and bottom gaskets for glass slats included with rail kits.

## GLASS SLATS

Description	For 36" Rail Height	For 42" Rail Height
Glass Slats for Level Kits – Box of 9 – For Use with 6' Kits	<b>73041331</b>	<b>73041332</b>
Glass Slats for Level Kits – Box of 12 – For Use with 8' Kits	<b>73041333</b>	<b>73041334</b>

Glass slats are for residential use only.

**NEW!**



Decorative Screen Panel Infill



4 1/8" Glass Slats

**TOP RAILS**

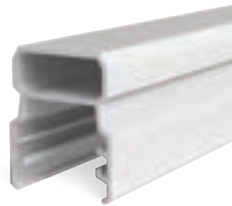
Description	White	Matte Black	Matte Bronze
6' Top Rail – Pellinore	73020442	73020448	73019456
8' Top Rail – Pellinore	73020443	73020449	73019462
6' Top Rail – Tristan	73020446	73020452	73019457
8' Top Rail – Tristan	73020447	73020453	73019463
6' Top Rail – Oberon*	73032049	73032042	73032048
8' Top Rail – Oberon*	73032052	73032050	73032051

Top Rails include 2 matching end covers.

\*Oberon top rail is intended for level applications only. Deck board must be installed on top of Oberon profile.



Pellinore™



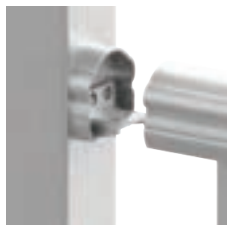
Tristan™



Oberon™\*

**BRACKETS**

Description	White	Matte Black	Matte Bronze
Pellinore Level Bracket Kit (set of 4 – 2 top, 2 bottom)	73019301	73019298	73019490
Pellinore Stair Bracket Kit (set of 4 – 2 top, 2 bottom)	73019310	73019307	73019491
Pellinore Fixed Angle Stair Bracket (set of 4 – 2 top, 2 bottom)	73045480	73045479	73045481
Pellinore Angle Bracket Kit (set of 4 – 2 top, 2 bottom)	73019318	73019319	73019489
Tristan Level Bracket Kit (set of 4 – 2 top, 2 bottom)	73019300	73019297	73019496
Tristan Stair Bracket Kit (set of 4 – 2 top, 2 bottom)	73019309	73019306	73019497
Tristan Fixed Angle Stair Bracket (set of 4 – 2 top, 2 bottom)	73045483	73045482	73045484
Tristan Angle Bracket Kit (set of 4 – 2 top, 2 bottom)	73019315	73019316	73019495
Oberon Level Bracket Kit (set of 4 – 2 top, 2 bottom)	73040784	73040785	73040786



Level Brackets



Level Angle Brackets



Stair Brackets (0 to 38°)



Fixed Angle Stair Brackets (29 to 35°)

Brackets shown with Pellinore top rail and top rail end cover. Fixed angle stair brackets not available for Oberon.

Typical new stair construction utilizes a 7" rise and an 11" run which results in a 32° stair angle.

## NEW! 2-TO-3 RAIL BRACKETS

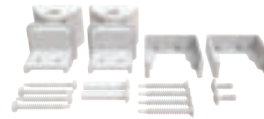
Description	White	Matte Black	Matte Bronze
2-to-3 Rail Bracket Kit (set of 4 – 2 top, 2 bottom)	<b>73050446</b>	<b>73050444</b>	<b>73050445</b>
2-to-3 Rail Angle Bracket Kit (set of 4 – 2 top, 2 bottom)	<b>73050449</b>	<b>73050447</b>	<b>73050448</b>

**NEW!**



2-to-3 Rail Bracket Kit

**NEW!**



2-to-3 Rail Angle Bracket Kit

## OVER-THE-TOP BRACKETS

Description	White	Matte Black	Matte Bronze
Pellinore 2" Over-the-Top Post Bracket – Mid Post	<b>73020663</b>	<b>73020681</b>	<b>73019487</b>
Pellinore 2" Over-the-Top Post Bracket – Corner Post	<b>73020664</b>	<b>73020682</b>	<b>73019486</b>
Pellinore 2" Over-the-Top Post Bracket – End Post	<b>73020665</b>	<b>73020683</b>	<b>73019488</b>
Tristan 2" Over-the-Top Post Bracket – Mid Post	<b>73020666</b>	<b>73020684</b>	<b>73019494</b>
Tristan 2" Over-the-Top Post Bracket – Corner Post	<b>73020667</b>	<b>73020685</b>	<b>73019492</b>
Tristan 2" Over-the-Top Post Bracket – End Post	<b>73020668</b>	<b>73020686</b>	<b>73019493</b>
Oberon 2" Over-the-Top Post Bracket – Mid Post*	<b>73040798</b>	<b>73040797</b>	<b>73040799</b>
Oberon 2" Over-the-Top Post Bracket – Corner Post*	<b>73040801</b>	<b>73040800</b>	<b>73040802</b>
Oberon 2" Over-the-Top Post Bracket – End Post	<b>73040788</b>	<b>73040787</b>	<b>73040796</b>

\*Does not include bracket covers; deck board will install over the top of Oberon top rail.



Mid Bracket



Corner Bracket



End Bracket

Style shown for use with Pellinore Top Rail



**FASCIA BRACKET KITS**

Description	White	Matte Black	Matte Bronze
Fascia Mount Mid Bracket Kit	73045489	73045488	73045490
Fascia Mount Outside Corner Bracket Kit	73045492	73045491	73045493
Fascia Mount Insider Corner Bracket Kit	73045495	73045494	73045496
Fascia Mount Juliette Bracket Kit	73045498	73045497	73045499
Fascia Mount Juliette Spacer*	73050297		

\*Only necessary when Juliette application is using a fascia mid bracket and post.

**NEW!**



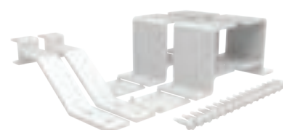
Mid Bracket Kit



Outside Corner Bracket Kit



Inside Corner Bracket Kit



Juliette Bracket Kit



Fascia Mount Juliette Spacer

**GATE KITS**

Description	White	Matte Black	Matte Bronze
36" Gate Kit	73020655	73020654	73019478
42" Gate Kit	73020658	73020657	73019479

Gate Kits include uprights, cross braces and gate kit hardware (2 hinges, 1 gravity latch – black only). Complete gate by purchasing rail panel and top rail separately. Gate kits cannot be used with Avalon glass or cable rail and cannot exceed widths of 48".



Gate Kit

**TOUCH-UP PAINT**

Description	White	Matte Black	Matte Bronze
Touch-Up Paint Aerosol (12 oz)	73022328	73044481	73044482
Touch-Up Paint Pen (1/3 fl oz)	73022351	N/A	N/A
Touch-Up Paint Bottle & Brush (1/2 fl oz)	N/A	73044483	73044484

**LED lighting options are available for use with Avalon Aluminum Railing. For details and options, see page 64.**

# METALWORKS EXCALIBUR®

MetalWorks Excalibur Steel Railing combines strength with a traditional and timeless style. Factory welded, fully assembled panels with hidden attachments and pre-attached brackets, allow for easy installation. Available in a traditional two rail design or in three decorative styles with textured matte black and hammered bronze finishes.



MetalWorks Excalibur traditional style in Matte Black.

## PRODUCT BENEFITS

- Panels with square balusters are factory welded — no assembly required
- Pre-attached brackets on posts make level installation easy and ensure consistent bottom spacing
- Code compliant

## HOMEOWNER BENEFITS

- Decorative infill styles offer custom looks
- Premium powder coating provides maximum durability
- 15 Year Limited Warranty

## DESIGN VERSATILITY

- Decorative panel designs complement Transform composite railing
- 4 infill options
- Available in 2 colors



Matte Black



Hammered Bronze



## SOLARGUARD®

SolarGuard technology provides fade resistance so that your outdoor living products will maintain a like-new finish for years to come.

MetalWorks Excalibur Latitudes in Matte Black.

## Product Spotlight

MetalWorks Latitudes — with its unique horizontal rod design — provides homeowners with open views and modern styling.

2" X 2" POSTS		
Description	Matte Black	Hammered Bronze
2" x 2" x 38" Mid Post Assembly for 36" Rail Height with 2" Bottom Space	<b>73018345</b>	<b>73018346</b>
2" x 2" x 38" End Post Assembly for 36" Rail Height with 2" Bottom Space	<b>73018336</b>	<b>73018337</b>
2" x 2" x 38" Corner Post Assembly for 36" Rail Height with 2" Bottom Space	<b>73018326</b>	<b>73018327</b>
2" x 2" x 44" Mid Post Assembly for 42" Rail Height with 2" Bottom Space	<b>73018349</b>	<b>73018350</b>
2" x 2" x 44" End Post Assembly for 42" Rail Height with 2" Bottom Space	<b>73018339</b>	<b>73018340</b>
2" x 2" x 44" Corner Post Assembly for 42" Rail Height with 2" Bottom Space	<b>73018330</b>	<b>73018331</b>
2" x 2" x 40" Mid Post Assembly for 38" Rail Height with 4" Bottom Space	<b>73018347</b>	<b>73018348</b>
2" x 2" x 40" End Post Assembly for 38" Rail Height with 4" Bottom Space	<b>73018021</b>	<b>73018338</b>
2" x 2" x 40" Corner Post Assembly for 38" Rail Height with 4" Bottom Space	<b>73018023</b>	<b>73018328</b>
2" x 2" x 38" Blank Post for 36" Rail Height (Brackets sold separately)	<b>73018315</b>	<b>73018316</b>
2" x 2" x 40" Blank Post for 38" Rail Height (Brackets sold separately)	<b>73018317</b>	<b>73018022</b>
2" x 2" x 44" Blank Post for 42" Rail Height (Brackets sold separately)	<b>73018318</b>	<b>73018319</b>
2" x 2" x 46" Blank Post for 44" Rail Height (Brackets sold separately)	<b>73018320</b>	<b>73018321</b>
2" x 2" x 48" Blank Post (Brackets sold separately)	<b>73018322</b>	<b>73018323</b>
2" x 2" x 52" Fascia Mount Post (Fascia brackets sold separately)	<b>73019191</b>	<b>73019192</b>

You may need to purchase a longer blank post for stair application depending on your installation scenario.

3" X 3" POSTS		
Description	Matte Black	Hammered Bronze
3" x 3" x 38" Mid Post Assembly for 36" Rail Height with 2" Bottom Space	<b>73044021</b>	<b>73044027</b>
3" x 3" x 38" End Post Assembly for 36" Rail Height with 2" Bottom Space	<b>73044020</b>	<b>73044026</b>
3" x 3" x 38" Corner Post Assembly for 36" Rail Height with 2" Bottom Space	<b>73044022</b>	<b>73044028</b>
3" x 3" x 40" Mid Post Assembly for 38" Rail Height with 4" Bottom Space	<b>73044024</b>	<b>73044030</b>
3" x 3" x 40" End Post Assembly for 38" Rail Height with 4" Bottom Space	<b>73044023</b>	<b>73044029</b>
3" x 3" x 40" Corner Post Assembly for 38" Height Rail with 4" Bottom Space	<b>73044025</b>	<b>73044031</b>
3" x 3" x 40" Blank Post for 36" to 38" Rail Height (Brackets sold separately)	<b>73032020</b>	<b>73032021</b>
3" x 3" x 46" Blank Post for 36" to 44" Rail Height (Brackets sold separately)	<b>73032022</b>	<b>73032023</b>

You may need to purchase a longer blank post for stair application depending on your installation scenario.

2" X 2" POSTS POSTS – CALIFORNIA ONLY*		
Description	Matte Black	Hammered Bronze
2" x 2" x 44" Mid Post Assembly for 42" Rail Height with 4" Bottom Space	<b>73018046</b>	<b>73018047</b>
2" x 2" x 44" End Post Assembly for 42" Rail Height with 4" Bottom Space	<b>73018044</b>	<b>73018045</b>
2" x 2" x 44" Corner Post Assembly for 42" Height Rail with 4" Bottom Space	<b>73018043</b>	<b>73018329</b>

\* These SKUs are CA code compliant and only stocked in our West Coast warehouse. They are for distribution in CA only.



Mid Post



Corner Post



End Post



Blank Post



Fascia Post



Fascia Post shown with brackets

**TRADITIONAL RAIL PANELS**

Description	Matte Black	Hammered Bronze
6' x 34" Level Rail Panel – Square Baluster	<b>73018004</b>	<b>73018298</b>
8' x 34" Level Rail Panel – Square Baluster	<b>73018024</b>	<b>73018016</b>
10' x 34" Level Rail Panel – Square Baluster*	<b>73018015</b>	<b>73018291</b>
6' x 34" Stair Rail Panel – Square Baluster	<b>73018019</b>	<b>73018304</b>
8' x 34" Stair Rail Panel – Square Baluster	<b>73018310</b>	<b>73018311</b>
6' x 40" Level Rail Panel – Square Baluster	<b>73018299</b>	<b>73018300</b>
8' x 40" Level Rail Panel – Square Baluster	<b>73018018</b>	<b>73018303</b>
8' x 40" Stair Rail Panel – Square Baluster	<b>73018020</b>	<b>73018314</b>

34" panels can be installed at a finished rail height of 36" with 2" bottom space or 38" with 4" bottom space. 40" panels can be installed at a finished rail height of 42" with 2" bottom space or 44" with 4" bottom space.

\*10' panels can be used to cut down to shorter lengths or for long spans where code compliance is not required.

**TRADITIONAL RAIL PANELS – CALIFORNIA ONLY\***

Description	Matte Black	Hammered Bronze
6' x 38¼" Level Rail Panel – Square Baluster	<b>73018030</b>	<b>73018031</b>
8' x 38¼" Level Rail Panel – Square Baluster	<b>73018032</b>	<b>73018033</b>
6' x 32¼" Stair Rail Panel – Square Baluster	<b>73018034</b>	<b>73018035</b>
8' x 32¼" Stair Rail Panel – Square Baluster	<b>73018036</b>	<b>73018309</b>

\* These SKUs are CA code compliant and only stocked in our West Coast warehouse. They are for distribution in CA only.

**SERPENTINE RAIL PANELS**

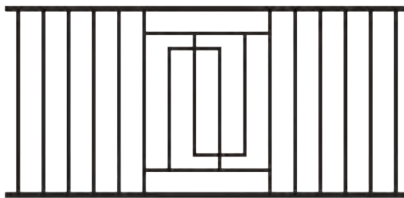
Description	Matte Black	Hammered Bronze
6' x 34" Serpentine Level Rail Panel – Square Baluster with Design	<b>73045160</b>	<b>73045168</b>
8' x 34" Serpentine Level Rail Panel – Square Baluster with Design	<b>73045161</b>	<b>73045169</b>
6' x 40" Serpentine Level Rail Panel – Square Baluster with Design	<b>73045162</b>	<b>73045170</b>
8' x 40" Serpentine Level Rail Panel – Square Baluster with Design	<b>73045163</b>	<b>73045171</b>

**MOSAIC RAIL PANELS**

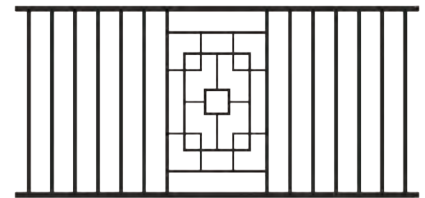
Description	Matte Black	Hammered Bronze
6' x 34" Mosaic Level Rail Panel – Square Baluster with Design	<b>73045156</b>	<b>73045164</b>
8' x 34" Mosaic Level Rail Panel – Square Baluster with Design	<b>73045157</b>	<b>73045165</b>
6' x 40" Mosaic Level Rail Panel – Square Baluster with Design	<b>73045158</b>	<b>73045166</b>
8' x 40" Mosaic Level Rail Panel – Square Baluster with Design	<b>73045159</b>	<b>73045167</b>



Traditional

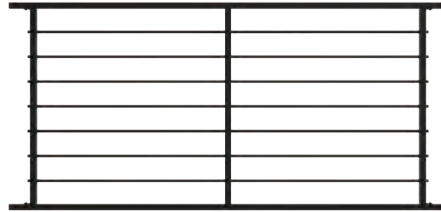


Serpentine



Mosaic

LATITUDES RAIL PANELS		
Description	Matte Black	Hammered Bronze
6' x 34" Latitudes Level Rail Panel – Horizontal Round Rails	<b>73044057</b>	<b>N/A</b>
8' x 34" Latitudes Level Rail Panel – Horizontal Round Rails	<b>73044089</b>	<b>N/A</b>
6' x 34" Latitudes Stair Rail Panel – Horizontal Round Rails	<b>73044087</b>	<b>N/A</b>
6' x 40" Latitudes Level Rail Panel – Horizontal Round Rails	<b>73044058</b>	<b>N/A</b>
8' x 40" Latitudes Level Rail Panel – Horizontal Round Rails	<b>73044086</b>	<b>N/A</b>
6' x 40" Latitudes Stair Rail Panel – Horizontal Round Rails	<b>73044088</b>	<b>N/A</b>



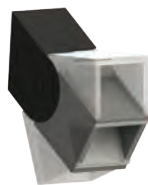
Latitudes

BRACKETS		
Description	Matte Black	Hammered Bronze
Bracket Kit for Level Rail	<b>73018013</b>	<b>73018025</b>
Bracket Kit for Stair or Level Angle Rail	<b>73018014</b>	<b>73018026</b>
Imperial Decorative Bracket for Level Rail*	<b>73044946</b>	<b>73044947</b>
Scrollwork Decorative Bracket for Level Rail*	<b>73044948</b>	<b>73044949</b>
Fascia Post Bracket Kit – For 2" Posts Only (mounting hardware not included)	<b>73019193</b>	<b>73019194</b>

\* Decorative brackets come with hardware to attach to either wooden posts or steel posts.



Level Brackets



Stair/Angle Brackets



Imperial Brackets



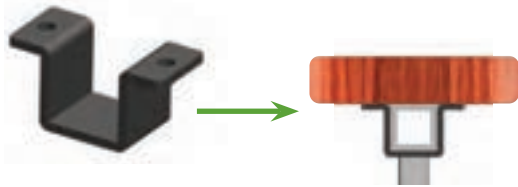
Scrollwork Brackets



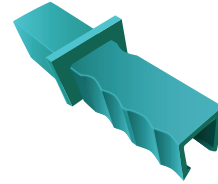
Fascia Brackets

**ACCESSORIES**

Description	Matte Black	Hammered Bronze
Top Cap Flush Bracket Kit (set of 4)	<b>73018886</b>	<b>73018887</b>
Rail Cutting Jig	<b>73018283</b>	



Flush Mount Bracket



Rail Cutting Jig

**GATES**

Description	Matte Black	Hammered Bronze
34" x 36" Gate, Assembled for 36"- 38" Rail – 36" Finished Opening	<b>73018268</b>	<b>N/A</b>
Gate Ends for 36"- 38" Rail – Custom Width – Rail Panel Sold Separately	<b>73018276</b>	<b>73018277</b>
Gate Ends for 42" Rail – Custom Width – Rail Panel Sold Separately (CA only)	<b>73018278</b>	<b>73018279</b>
Gate Ends for 42"- 44" Rail – Custom Width – Rail Panel Sold Separately	<b>73018280</b>	<b>73018281</b>
Compact Butterfly Hinge Kit Pair (Black aluminum)	<b>73024441</b>	
Gravity Latch (Black steel)	<b>73024440</b>	



Pre-Assembled Gate



Gate Ends

**TOUCH-UP PAINT**

Description	Matte Black
Touch-Up Paint Aerosol (12 oz)	<b>73044481</b>
Touch-Up Paint Bottle & Brush (½ fl oz)	<b>73044483</b>

Cut rail ends may be painted with any zinc-rich primer or paint. For Matte Black touch-ups, touch-up paint or Rust-Oleum® Satin Canyon Black, color code 249844 is recommended. For Hammered Bronze touch-ups, we recommend Rust-Oleum® Hammered Brown, color code 210880\*.

\*Rust-Oleum® is a registered trademark of Rust-Oleum Brand Company.

# ENDURANCE® ORIGINAL RAIL™

Endurance Original Rail is a full vinyl railing system with everything needed to build a railing in one box. Endurance Original Rail offers dependable function with rails that are reinforced with aluminum stiffeners for added strength. A wide range of brackets are also available to meet a variety of installation needs.



Endurance Original Rail in White with glass infills.



## PRODUCT BENEFITS

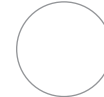
- Aluminum stiffeners reinforce top and bottom rails for added strength and support
- Wide range of brackets available to meet variety of installation needs
- Code compliant
- Made in the USA

## HOMEOWNER BENEFITS

- Easy to maintain
- Transferrable Limited Lifetime Warranty

## DESIGN VERSATILITY

- Hidden fasteners provide a clean, finished look
- 4 infill options
- Available in 3 colors



White



Khaki



Sand



## SOLARGUARD®

SolarGuard technology provides fade resistance so that your outdoor living products will maintain a like-new finish for years to come.

STRUCTURAL POSTS	
Description	
Structural Post for 36" Rail Height – Flush Mount	73019022
Structural Post for 36" Rail Height – Thru/Fascia Mount	73019023
Structural Post for 42" Rail Height – Flush Mount	73019024
Structural Post for 42" Rail Height – Thru/Fascia Mount	73019025

VINYL POST SLEEVES & POST WRAPS			
Description	White	Khaki	Sand
4" x 4" x 39" Post Sleeve (unit pack of 84)	61109087	61109644	73041475
4" x 4" x 39" Post Sleeve (unit pack of 22)	73019260	N/A	N/A
4" x 4" x 45" Post Sleeve	61109088	61109645	73041476
4" x 4" x 54" Post Sleeve	73019029	N/A	N/A
4" x 4" x 100" Post Sleeve	73012479	N/A	N/A
4" x 4" x 108" Post Sleeve	61109090	61109647	73041477
4" x 4" x 120" Post Sleeve	73006803	N/A	N/A
4" x 4" x 48" Turned Post Sleeve (requires structural post)	73018760	N/A	N/A
5" x 5" x 39" Post Sleeve	73043921	N/A	N/A
5" x 5" x 45" Post Sleeve	73043922	N/A	N/A
5" x 5" x 108" Post Sleeve	73043923	N/A	N/A
5" x 5" Post Inserts*	73019139		
6" x 6" x 54" Post Sleeve	73018734	N/A	N/A
6" x 6" x 108" Post Sleeve	73018731	73018732	73041478
6" x 6" x 144" Post Sleeve	73047640	N/A	N/A
4" x 4" x 96" – 4 Piece Post Wrap**	73018473	73018474	73041479
4" x 4" x 120" – 4 Piece Post Wrap**	73018007	73018476	73041480
6" x 6" x 96" – 4 Piece Post wrap**	73018478	73018479	73041481
6" x 6" x 120" – 4 Piece Post Wrap**	73018008	73018481	73041482

\*Post Inserts are used when sleeving 4" x 4" wooden posts or structural posts.

\*\*4" x 4" Post Wrap can wrap a post from 3<sup>3</sup>/<sub>8</sub>" square to 4<sup>1</sup>/<sub>8</sub>" square and 6" x 6" Post Wrap can wrap a post from 5<sup>7</sup>/<sub>16</sub>" square to 6<sup>1</sup>/<sub>8</sub>" square.



Structural Post –  
Flush Mount



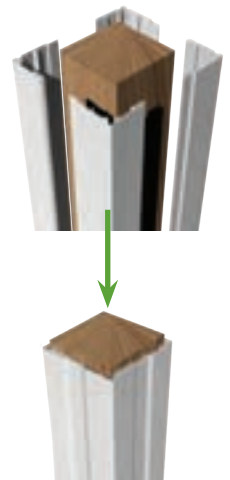
Structural Post –  
Thru/Fascia Mount



Post Sleeve



Post Insert



4-Piece Post Wrap

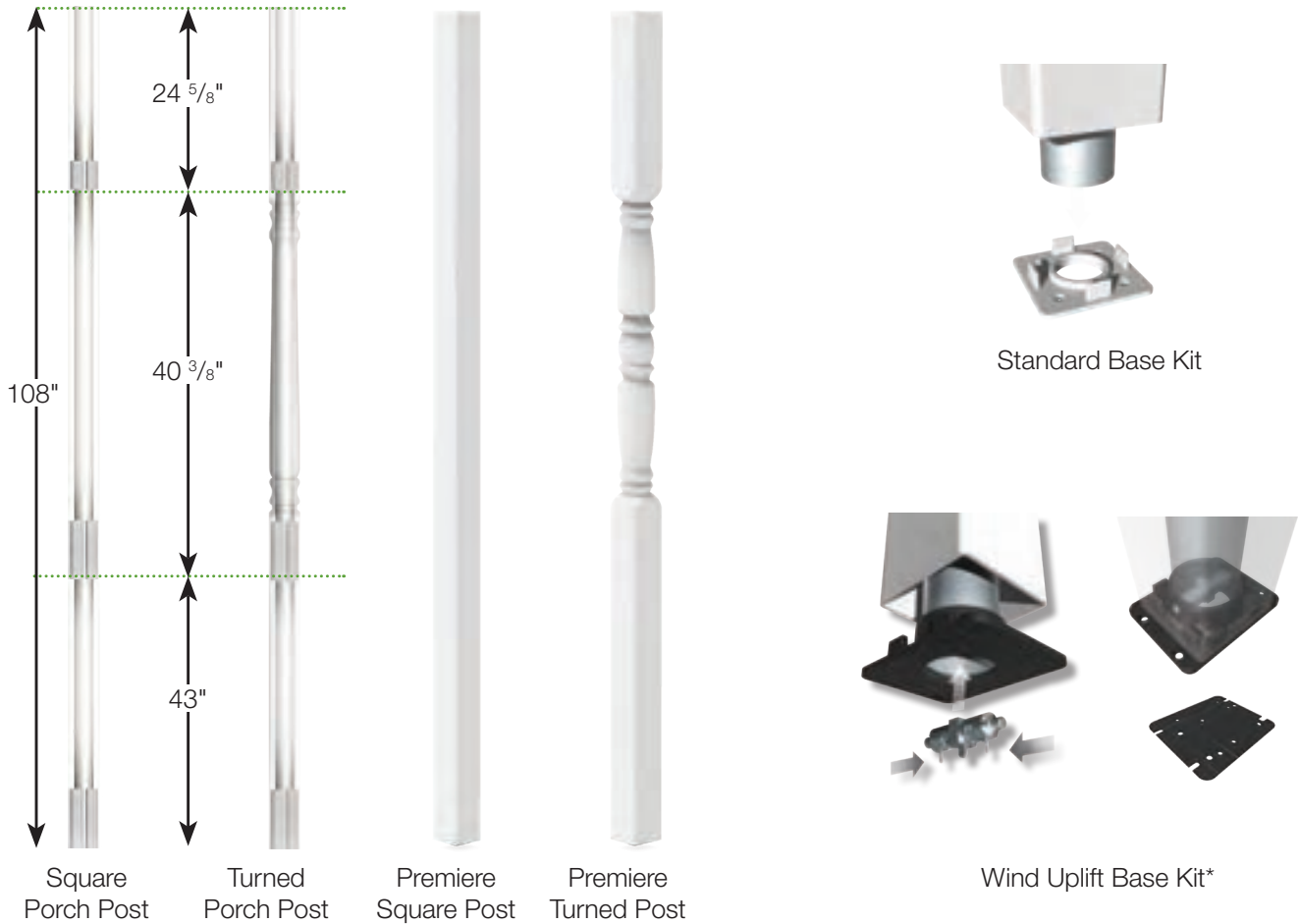
VINYL PORCH POSTS			
Description	White	Khaki	Sand
4" x 4" x 108" Square Post – 2,500 lb. Capacity*	<b>73018767</b>	<b>N/A</b>	<b>N/A</b>
4" x 4" x 108" Turned Post – 2,500 lb. Capacity*	<b>73018752</b>	<b>N/A</b>	<b>N/A</b>
5" x 5" x 108" Square Post – 5,000 lb. Capacity*	<b>73018769</b>	<b>N/A</b>	<b>N/A</b>
5" x 5" x 108" Turned Post – 5,000 lb. Capacity*	<b>73018010</b>	<b>73018741</b>	<b>73041483</b>
5" x 5" x 108" Premiere Square Post – 4,500 lb. Capacity**	<b>73047642</b>	<b>N/A</b>	<b>N/A</b>
5" x 5" x 108" Premiere Turned Post – 4,500 lb. Capacity**	<b>73047641</b>	<b>N/A</b>	<b>N/A</b>

\*Porch Posts require a Porch Post Mounting Kit

\*\*Premiere Posts include post mounting kits. Internal blocking not included and required if mounting railing to these posts.

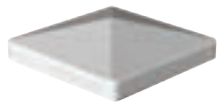
PORCH POST MOUNTING KITS	
Description	
4" Standard Base Kit (includes 1 bottom and 1 top mounting plate)	<b>73018005</b>
4" Wind Uplift Base Kit* (includes 1 bottom, 1 top mounting plate, 2 pistons and 2 PVC gaskets)	<b>73018089</b>
5" Standard Base Kit (includes 1 bottom and 1 top mounting plate)	<b>73018006</b>
5" Wind Uplift Base Kit* (includes 1 bottom, 1 top mounting plate, 2 pistons and 2 PVC gaskets)	<b>73018090</b>

\*Wind Uplift Base Kit prevents wind uplift up to 2,800 lbs.



\*The Wind Uplift Base Kit is shown in black for illustration purposes only. The PVC gasket prevents corrosion of the base plate and accommodates all base kits.

VINYL POST CAPS			
Description	White	Khaki	Sand
4" x 4" Flat Post Cap	73018076	73018074	73041484
4" x 4" New England Post Cap	73044950	73044951	73044952
4" x 4" Elite Post Cap	73018073	73018071	73041485
4" x 4" Heritage Post Cap	73012500	N/A	N/A
4" x 4" Contemporary Post Cap	73019233	N/A	N/A
4" x 4" Contemporary Solar Post Cap	73019234	73045510	73045511
5" x 5" Flat Post Cap	73003093	N/A	N/A
5" x 5" New England Post Cap	73045003	N/A	N/A
5" x 5" Contemporary Post Cap	73013124	N/A	N/A
5" x 5" Contemporary Solar Post Cap	73013110	N/A	N/A
6" x 6" New England Post Cap	73018108	73018106	73041489
6" x 6" Elite Post Cap	73018105	N/A	N/A



Flat Post Cap



New England Post Cap



4" Elite Post Cap



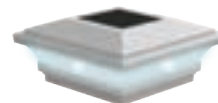
6" Elite Post Cap



Heritage Post Cap



Contemporary Post Cap



Contemporary Solar Post Cap

VINYL POST TRIM RINGS			
Description	White	Khaki	Sand
4" x 4" Elite Trim Ring	73018091	73018092	73041490
4" x 4" Heritage Trim Ring*	73012503	73045023	73045024
4" x 4" Low Profile Trim Ring	73045041	73045042	73045043
5" x 5" 2-Piece Trim Ring	73043929	N/A	N/A
3.5" to 6.5" – 4-Piece Elite Trim Ring**	73018131	73018066	73041493

\*The Heritage Trim Ring complements the New England Post Cap and the Heritage Post Cap. Does not allow for a 2" bottom space when used with Endurance Original Rail.

\*\*Adjustable Elite 4-Piece Trim Ring can be installed at any time and can be adjusted to fit posts from 3½" x 3½" to 6½" x 6½" without nails, screws or glue. 4-Piece Elite Trim Ring required for Wind Uplift Base Kit.



Elite Trim Ring



Heritage Trim Ring



Low Profile Trim Ring



5" 2-Piece Trim Ring



4-Piece Elite Trim Ring

**1 1/4" SQUARE BALUSTER KITS**

Description	White	Khaki	Sand
4' x 36" H – Level Rail Kit	<b>73018509</b>	<b>N/A</b>	<b>N/A</b>
6' x 36" H – Level Rail Kit	<b>73018009</b>	<b>73018527</b>	<b>73041395</b>
8' x 36" H – Level Rail Kit	<b>73018000</b>	<b>73018537</b>	<b>73041396</b>
10' x 36" H – Level Rail Kit	<b>73018498</b>	<b>N/A</b>	<b>N/A</b>
6' x 36" H – 32° to 38° Stair Rail Kit	<b>73019104</b>	<b>73019102</b>	<b>73041397</b>
8' x 36" H – 32° to 38° Stair Rail Kit	<b>73019116</b>	<b>73019114</b>	<b>73041398</b>
6' x 42" H – Level Rail Kit	<b>73018705</b>	<b>73018706</b>	<b>73041399</b>
8' x 42" H – Level Rail Kit	<b>73018708</b>	<b>73018709</b>	<b>73041400</b>
8' x 42" H – 32° to 38° Stair Rail Kit	<b>73019125</b>	<b>73019123</b>	<b>73041402</b>

Kits include top and bottom rails with aluminum stiffeners, balusters, bracket kit and installation hardware. Support foot required and sold separately for all installed rail lengths over 8'.

**3/4" ROUND ALUMINUM BALUSTER KITS**

Description	White	Khaki	Sand
6' x 36" H – Level Rail Kit	<b>73018553</b>	<b>73018554</b>	<b>73041404</b>
8' x 36" H – Level Rail Kit	<b>73018558</b>	<b>73018559</b>	<b>73041405</b>
10' x 36" H – Level Rail Kit	<b>73018547</b>	<b>N/A</b>	<b>N/A</b>
6' x 36" H – 32° to 38° Stair Rail Kit	<b>73019110</b>	<b>73019108</b>	<b>73041406</b>
8' x 36" H – 32° to 38° Stair Rail Kit	<b>73019122</b>	<b>73019120</b>	<b>73041407</b>

Kits include top and bottom rails with aluminum stiffeners, balusters, bracket kit and installation hardware. Support foot required and sold separately for all installed rail lengths over 8'.

**1 1/4" TURNED BALUSTER KITS**

Description	White
6' x 36" H – Level Rail Kit – 1 1/4" Turned Baluster	<b>73018633</b>
8' x 36" H – Level Rail Kit – 1 1/4" Turned Baluster	<b>73018636</b>
10' x 36" H – Level Rail Kit – 1 1/4" Turned Baluster	<b>73018626</b>
6' x 36" H – 32° to 38° Stair Rail Kit – 1 1/4" Turned Baluster	<b>73019107</b>
8' x 36" H – 32° to 38° Stair Rail Kit – 1 1/4" Turned Baluster	<b>73019119</b>

Kits include top and bottom rails with aluminum stiffeners, balusters, bracket kit and installation hardware. Support foot required and sold separately for all installed rail lengths over 8'.



1 1/4" Square Balusters



3/4" Round Aluminum Balusters



1 1/4" Turned Balusters

GLASS SLAT RAIL KITS	
Description	White
6' Level Rail Kit – for Glass Slats – Requires 9 Level Glass Slats	<b>73018530</b>
8' Level Rail Kit – for Glass Slats – Requires 12 Level Glass Slats	<b>73018540</b>

Kits include top and bottom rails with aluminum stiffeners, bracket kit, support foot and installation hardware. Glass slats sold separately.

GLASS SLATS		
Description	36"	42"
Glass Slats for Level Kits – Box of 9 – For Use with 6' Kits	<b>73041331</b>	<b>73041332</b>
Glass Slats for Level Kits – Box of 12 – For Use with 8' Kits	<b>73041333</b>	<b>73041334</b>

42" glass slats for residential use only. Support foot required and included for glass railing sections 6' to 8'.



4 1/8" Glass Slats (Level only)

ACCESSORIES			
Description	White	Khaki	Sand
Level Mounting Bracket Kit – 2 Pairs	<b>73019016</b>	<b>73019018</b>	<b>73041408</b>
Stair Mounting Bracket Kit – 2 Pairs	<b>73019017</b>	<b>73019019</b>	<b>73041409</b>
0° to 44° Level Mounting Bracket Kit – 1 Pair	<b>73018065</b>	<b>73018017</b>	<b>73041411</b>
45° Level Mounting Bracket Kit – 1 Pair	<b>73018086</b>	<b>73018084</b>	<b>73041412</b>
Round Column Mounting Bracket Kit – 1 Pair	<b>73018115</b>	<b>73018113</b>	<b>73041410</b>
Paintable Round Column Mounting Bracket Adapter Kit – 1 Pair	<b>73018116</b>	<b>N/A</b>	<b>N/A</b>
2" to 4" Level Rail Support Kit	<b>73018129</b>	<b>73018127</b>	<b>73041494</b>

Level rail support required for lengths over 8' (10' panels being used at any lengths longer than 8'). Endurance Original Rail kits (except glass kits) do not include a support foot.



Level Mounting Bracket Kit



Stair Mounting Bracket Kit



0° to 44° Level Bracket Kit\*



45° Mounting Bracket Kit



Round Column Mounting Bracket Kit For 8" Columns



Paintable Round Column Bracket Adapter Kit for 8" Columns

**VINYL RAIL GATE KITS**

Description	White	Khaki	Sand
Standard Width Gate Kit – 36" H – 1¼" Square Balusters	<b>73018135</b>	<b>N/A</b>	<b>N/A</b>
Custom Width Gate Kit – 36" H – 1¼" Square Balusters	<b>73045025</b>	<b>73045026</b>	<b>73045027</b>
Custom Width Gate Kit – 36" H – 1½" Square Balusters	<b>73045028</b>	<b>73045029</b>	<b>73045030</b>
Custom Width Gate Kit – 36" H – 1¼" Turned Balusters	<b>73045034</b>	<b>N/A</b>	<b>N/A</b>
Custom Width Gate Kit – 36" H – 1½" Turned Balusters	<b>73045044</b>	<b>73045045</b>	<b>73045046</b>
Custom Width Gate Kit – 36" H – ¾" Round Aluminum Balusters	<b>73045031</b>	<b>73045032</b>	<b>73045033</b>
Custom Width Gate Kit – 42" H – 1¼" Square Balusters	<b>73045035</b>	<b>73045036</b>	<b>73045037</b>
Custom Width Gate Kit – 42" H – 1½" Square Balusters	<b>73045038</b>	<b>73045039</b>	<b>73045040</b>

Standard gate kit has a maximum opening width of 36". Custom gate kits have a maximum width opening up to 48". Gate kits include everything to build a gate panel. Gate hardware sold separately.



Standard Gate Kit



Custom Gate Kit

**VINYL GATE HARDWARE**

Description	Black	White
Standard Wrap Hinge Pair	<b>73028117</b>	<b>73025512</b>
Two-Sided Locking Latch	<b>73050187</b>	<b>73050188</b>
Gravity Latch	<b>73002252</b>	<b>73025491</b>
24" Heavy-Duty Drop Rod	<b>73014305</b>	<b>73014306</b>

**LED lighting options are available for use with Endurance Original Rail. For details and options, see page 64.**

# FINYL LINE™

Finyl Line Vinyl Railing is easy to install and is reinforced with strong aluminum — designed to provide added safety. Choose from a traditional T-Top style or Deck Top profile to add a deck board to and create a flat "cocktail rail". Available with three baluster styles — square, turned or black round aluminum — and new this year, a Decorative Screen Panel infill option.



Finyl Line Deck Top in White with black round aluminum balusters.



## PRODUCT BENEFITS

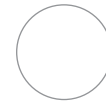
- Deck Top rail allows for deck board to be easily turned into a flat "cocktail rail"
- Aluminum stiffeners reinforce top and bottom rails for added strength and support
- Code compliant
- Made in the USA

## HOMEOWNER BENEFITS

- Easy to maintain
- Transferrable Limited Lifetime Warranty

## DESIGN VERSATILITY

- NEW! Decorative Screen Panel infill option offers increased customization with multiple designs and colors
- Brackets conceal all fasteners — providing a clean, finished look
- 2 top rail profile options
- 4 infill options
- Available in 3 colors



White



Khaki



Sand



## SOLARGUARD®

SolarGuard technology provides fade resistance so that your outdoor living products will maintain a like-new finish for years to come.

## Product Spotlight

New offering! Finyl Line Vinyl Railing is now available with a code compliant Decorative Screen Panel infill option.

STRUCTURAL POSTS	
Description	
Structural Post for 36" Rail Height – Flush Mount	73019022
Structural Post for 36" Rail Height – Thru/Fascia Mount	73019023
Structural Post for 42" Rail Height – Flush Mount	73019024
Structural Post for 42" Rail Height – Thru/Fascia Mount	73019025

VINYL POST SLEEVES & POST WRAPS			
Description	White	Khaki	Sand
4" x 4" x 39" Post Sleeve (unit pack of 84)	61109087	61109644	73041475
4" x 4" x 39" Post Sleeve (unit pack of 22)	73019260	N/A	N/A
4" x 4" x 45" Post Sleeve	61109088	61109645	73041476
4" x 4" x 54" Post Sleeve	73019029	N/A	N/A
4" x 4" x 100" Post Sleeve	73012479	N/A	N/A
4" x 4" x 108" Post Sleeve	61109090	61109647	73041477
4" x 4" x 120" Post Sleeve	73006803	N/A	N/A
4" x 4" x 48" Turned Post Sleeve (requires structural post)	73018760	N/A	N/A
5" x 5" x 39" Post Sleeve	73043921	N/A	N/A
5" x 5" x 45" Post Sleeve	73043922	N/A	N/A
5" x 5" x 108" Post Sleeve	73043923	N/A	N/A
5" x 5" Post Inserts*	73019139		
6" x 6" x 54" Post Sleeve	73018734	N/A	N/A
6" x 6" x 108" Post Sleeve	73018731	73018732	73041478
6" x 6" x 144" Post Sleeve	73047640	N/A	N/A
4" x 4" x 96" – 4-Piece Post Wrap**	73018473	73018474	73041479
4" x 4" x 120" – 4-Piece Post Wrap**	73018007	73018476	73041480
6" x 6" x 96" – 4-Piece Post Wrap**	73018478	73018479	73041481
6" x 6" x 120" – 4-Piece Post Wrap**	73018008	73018481	73041482

\*Post Inserts are used when sleeving 4" x 4" wooden posts or structural posts.

\*\*4" x 4" Post Wrap can wrap a post from 3<sup>3</sup>/<sub>8</sub>" square to 4<sup>1</sup>/<sub>8</sub>" square and 6" x 6" Post Wrap can wrap a post from 5<sup>7</sup>/<sub>16</sub>" square to 6<sup>1</sup>/<sub>8</sub>" square.



Structural Post –  
Flush Mount



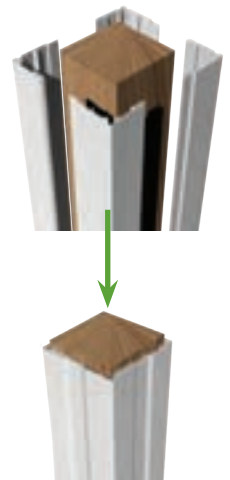
Structural Post –  
Thru/Fascia Mount



Post Sleeve



Post Insert



4-Piece Post Wrap

**VINYL PORCH POSTS**

Description	White	Khaki	Sand
4" x 4" x 108" Square Post – 2,500 lb. Capacity*	<b>73018767</b>	<b>N/A</b>	<b>N/A</b>
4" x 4" x 108" Turned Post – 2,500 lb. Capacity*	<b>73018752</b>	<b>N/A</b>	<b>N/A</b>
5" x 5" x 108" Square Post – 5,000 lb. Capacity*	<b>73018769</b>	<b>N/A</b>	<b>N/A</b>
5" x 5" x 108" Turned Post – 5,000 lb. Capacity*	<b>73018010</b>	<b>73018741</b>	<b>73041483</b>
5" x 5" x 108" Premiere Square Post – 4,500 lb. Capacity**	<b>73047642</b>	<b>N/A</b>	<b>N/A</b>
5" x 5" x 108" Premiere Turned Post – 4,500 lb. Capacity**	<b>73047641</b>	<b>N/A</b>	<b>N/A</b>

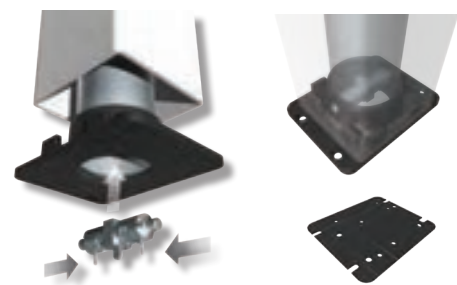
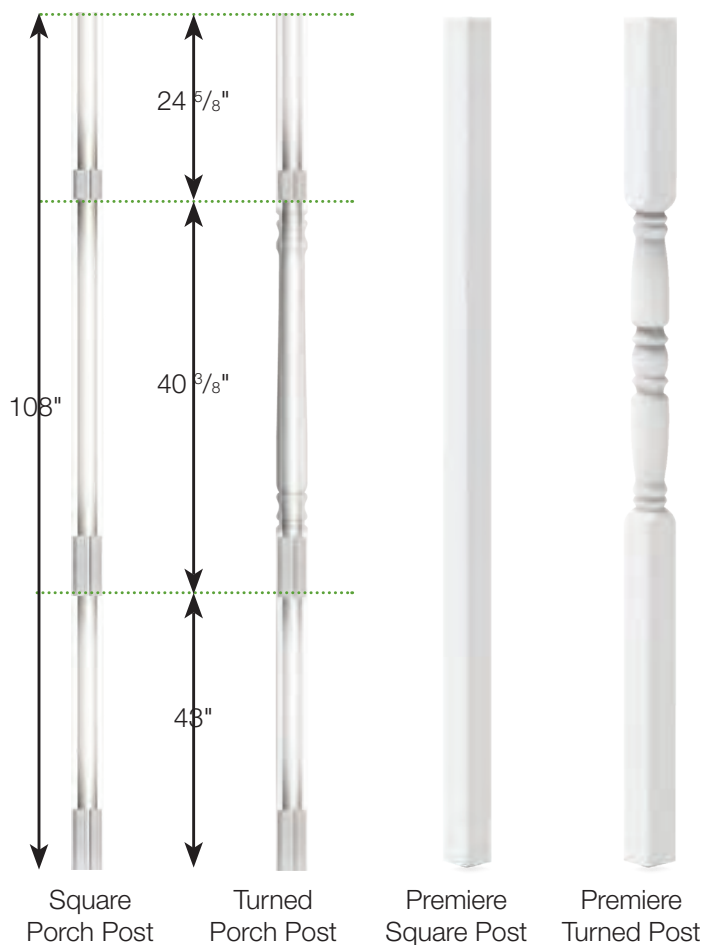
\*Porch Posts require a Porch Post Mounting Kit

\*\*Premiere Posts include post mounting kits. Internal blocking not included and required if mounting railing to these posts.

**PORCH POST MOUNTING KITS**

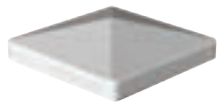
Description	
4" Standard Base Kit (includes 1 bottom and 1 top mounting plate)	<b>73018005</b>
4" Wind Uplift Base Kit* (includes 1 bottom, 1 top mounting plate, 2 pistons and 2 PVC gaskets)	<b>73018089</b>
5" Standard Base Kit (includes 1 bottom and 1 top mounting plate)	<b>73018006</b>
5" Wind Uplift Base Kit* (includes 1 bottom, 1 top mounting plate, 2 pistons and 2 PVC gaskets)	<b>73018090</b>

\*Wind Uplift Base Kit prevents wind uplift up to 2,800 lbs.



\*The Wind Uplift Base Kit is shown in black for illustration purposes only. The PVC gasket prevents corrosion of the base plate and accommodates all base kits.

VINYL POST CAPS			
Description	White	Khaki	Sand
4" x 4" Flat Post Cap	73018076	73018074	73041484
4" x 4" New England Post Cap	73044950	73044951	73044952
4" x 4" Elite Post Cap	73018073	73018071	73041485
4" x 4" Heritage Post Cap	73012500	N/A	N/A
4" x 4" Contemporary Post Cap	73019233	N/A	N/A
4" x 4" Contemporary Solar Post Cap	73019234	73045510	73045511
5" x 5" Flat Post Cap	73003093	N/A	N/A
5" x 5" New England Post Cap	73045003	N/A	N/A
5" x 5" Contemporary Post Cap	73013124	N/A	N/A
5" x 5" Contemporary Solar Post Cap	73013110	N/A	N/A
6" x 6" New England Post Cap	73018108	73018106	73041489
6" x 6" Elite Post Cap	73018105	N/A	N/A



Flat Post Cap



New England Post Cap



4" Elite Post Cap



6" Elite Post Cap



Heritage Post Cap



Contemporary Post Cap



Contemporary Solar Post Cap

VINYL POST TRIM RINGS			
Description	White	Khaki	Sand
4" x 4" Elite Trim Ring	73018091	73018092	73041490
4" x 4" Heritage Trim Ring*	73012503	73045023	73045024
4" x 4" Low Profile Trim Ring	73045041	73045042	73045043
5" x 5" 2-Piece Trim Ring	73043929	N/A	N/A
3.5" to 6.5" – 4-Piece Elite Trim Ring**	73018131	73018066	73041493

\*The Heritage Trim Ring complements the New England Post Cap and the Heritage Post Cap. Does not allow for a 2" bottom space when used with Endurance Original Rail.

\*\*Adjustable Elite 4-Piece Trim Ring can be installed at any time and can be adjusted to fit posts from 3½" x 3½" to 6½" x 6½" without nails, screws or glue. 4-Piece Elite Trim Ring required for Wind Uplift Base Kit.



Elite Trim Ring



Heritage Trim Ring



Low Profile Trim Ring



5" 2-Piece Trim Ring



4-Piece Elite Trim Ring

**T-TOP 1½" SQUARE BALUSTER RAIL KITS – 36" HEIGHT**

Description	White	White*	Khaki	Sand
4' x 36" H – Level Rail Kit	<b>73019536</b>	<b>73019688</b>	<b>N/A</b>	<b>N/A</b>
5' x 36" H – Level Rail Kit	<b>73019560</b>	<b>N/A</b>	<b>N/A</b>	<b>N/A</b>
6' x 36" H – Level Rail Kit	<b>73019603</b>	<b>73019690</b>	<b>73019587</b>	<b>73041503</b>
8' x 36" H – Level Rail Kit	<b>73019652</b>	<b>73019691</b>	<b>73019636</b>	<b>73041563</b>
10' x 36" H – Level Rail Kit	<b>73019517</b>	<b>73019687</b>	<b>73019510</b>	<b>73041504</b>
6' x 36" H – 26° to 38° Stair Rail Kit	<b>73019599</b>	<b>73019600</b>	<b>73019593</b>	<b>73041505</b>
8' x 36" H – 26° to 38° Stair Rail Kit	<b>73019648</b>	<b>73019649</b>	<b>73019642</b>	<b>73041506</b>
10' x 36" H – 26° to 38° Stair Rail Kit	<b>73019515</b>	<b>N/A</b>	<b>N/A</b>	<b>N/A</b>

\*Packed in clear see-through shrink "toughpack"; all other kits boxed.

Kits include top and bottom rails with aluminum stiffeners, balusters, bracket kit, support foot (10' kits only) and installation hardware.

**T-TOP 1½" SQUARE BALUSTER RAIL KITS – 42" HEIGHT**

Description	White	Khaki	Sand
4' x 42" H – Level Rail Kit	<b>73019543</b>	<b>N/A</b>	<b>N/A</b>
5' x 42" H – Level Rail Kit	<b>73019567</b>	<b>N/A</b>	<b>N/A</b>
6' x 42" H – Level Rail Kit	<b>73019616</b>	<b>73019611</b>	<b>73041509</b>
8' x 42" H – Level Rail Kit	<b>73019665</b>	<b>73019660</b>	<b>73041510</b>
6' x 42" H – 26° to 38° Stair Rail Kit	<b>73019615</b>	<b>N/A</b>	<b>N/A</b>
8' x 42" H – 26° to 38° Stair Rail Kit	<b>73019664</b>	<b>73019662</b>	<b>73041512</b>

Kits include top and bottom rails with aluminum stiffeners, balusters, bracket kit, support foot and installation hardware.

**T-TOP 1½" TURNED BALUSTER RAIL KITS – 36" HEIGHT**

Description	White	Khaki	Sand
4' x 36" H – Level Rail Kit	<b>73019537</b>	<b>N/A</b>	<b>N/A</b>
6' x 36" H – Level Rail Kit	<b>73019604</b>	<b>73019588</b>	<b>73041515</b>
8' x 36" H – Level Rail Kit	<b>73019653</b>	<b>73019637</b>	<b>73041516</b>
10' x 36" H – Level Rail Kit	<b>73019519</b>	<b>73019511</b>	<b>73041517</b>
6' x 36" H – 26° to 38° Stair Rail Kit	<b>73019601</b>	<b>N/A</b>	<b>N/A</b>
8' x 36" H – 26° to 38° Stair Rail Kit	<b>73019650</b>	<b>73019643</b>	<b>73041519</b>

Kits include top and bottom rails with aluminum stiffeners, balusters, bracket kit, support foot (10' kits only) and installation hardware.



1½" Square Balusters



1½" Turned Balusters



¾" Round Aluminum Balusters

T-TOP 3/4" ROUND ALUMINUM BALUSTER RAIL KITS – 36" HEIGHT			
Description	White	Khaki	Sand
4' x 36" H – Level Rail Kit	<b>73019535</b>	<b>N/A</b>	<b>N/A</b>
6' x 36" H – Level Rail Kit	<b>73019602</b>	<b>73019586</b>	<b>73041522</b>
8' x 36" H – Level Rail Kit	<b>73019651</b>	<b>73019635</b>	<b>73041523</b>
10' x 36" H – Level Rail Kit	<b>73019516</b>	<b>73019509</b>	<b>73041524</b>
6' x 36" H – 26° to 38° Stair Rail Kit	<b>73019598</b>	<b>N/A</b>	<b>N/A</b>
8' x 36" H – 26° to 38° Stair Rail Kit	<b>73019647</b>	<b>73019641</b>	<b>73041526</b>

Kits include top and bottom rails with aluminum stiffeners, balusters, bracket kit, support foot (10' kits only) and installation hardware.

T-TOP DECORATIVE INFILL PRE-BUILT PANELS – 36" HEIGHT	
Description	White
6' x 36" H – Chippendale Level Rail Panel	<b>73047634</b>
8' x 36" H – Chippendale Level Rail Panel	<b>73047635</b>
10' x 36" H – Chippendale Level Rail Panel	<b>73047636</b>
6' x 36" H – Freeport Level Rail Panel	<b>73047637</b>
8' x 36" H – Freeport Level Rail Panel	<b>73047638</b>
10' x 36" H – Freeport Level Rail Panel	<b>73047639</b>

Decorative infill SKUs come as pre-built panels. Brackets not included with rail panels; must be purchased separately.



Chippendale



Freeport

NEW! T-TOP LEVEL RAIL KIT FOR 3' X 6' DECORATIVE SCREEN PANEL INFILL			
Description	White	Khaki	Sand
6' x 36" H – Level Rail Kit	<b>73050461</b>	<b>73050462</b>	<b>73050463</b>

Decorative Screen Panels to use as infill sold separately. See page 70 for all 3' x 6' Decorative Screen Panel options.

**NEW!**



Level Rail Kit with Decorative Screen Panel infill (sold separately)

**DECK TOP 1½" SQUARE BALUSTER RAIL KITS – 36" HEIGHT**

Description	White	Khaki	Sand
6' x 36" H – Level Rail Kit	<b>73019584</b>	<b>73019569</b>	<b>73041529</b>
8' x 36" H – Level Rail Kit	<b>73019633</b>	<b>73019618</b>	<b>73041530</b>
10' x 36" H – Level Rail Kit	<b>73019518</b>	<b>N/A</b>	<b>N/A</b>
6' x 36" H – 26° to 38° Stair Rail Kit	<b>73019581</b>	<b>N/A</b>	<b>N/A</b>
8' x 36" H – 26° to 38° Stair Rail Kit	<b>73019630</b>	<b>73019624</b>	<b>73041533</b>

Kits include top and bottom rails with aluminum stiffeners, balusters, bracket kit, support foot (10' kits only) and installation hardware.

**DECK TOP 1½" SQUARE BALUSTER RAIL KITS – 42" HEIGHT**

Description	White	Khaki	Sand
6' x 42" H – Level Rail Kit	<b>73019610</b>	<b>N/A</b>	<b>N/A</b>
8' x 42" H – Level Rail Kit	<b>73019659</b>	<b>N/A</b>	<b>N/A</b>
8' x 42" H – 26° to 38° Stair Rail Kit	<b>73019658</b>	<b>N/A</b>	<b>N/A</b>

Kits include top and bottom rails with aluminum stiffeners, balusters, bracket kit and installation hardware.

**DECK TOP 1½" TURNED BALUSTER RAIL KITS – 36" HEIGHT**

Description	White	Khaki	Sand
6' x 36" H – Level Rail Kit	<b>73019585</b>	<b>N/A</b>	<b>N/A</b>
8' x 36" H – Level Rail Kit	<b>73019634</b>	<b>N/A</b>	<b>N/A</b>
10' x 36" H – Level Rail Kit	<b>73019508</b>	<b>N/A</b>	<b>N/A</b>
6' x 36" H – 26° to 38° Stair Rail Kit	<b>73019582</b>	<b>N/A</b>	<b>N/A</b>
8' x 36" H – 26° to 38° Stair Rail Kit	<b>73019631</b>	<b>N/A</b>	<b>N/A</b>

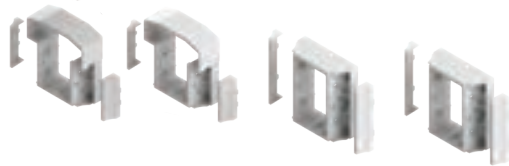
Kits include top and bottom rails with aluminum stiffeners, balusters, bracket kit, support foot (10' kits only) and installation hardware.

**DECK TOP ¾" ROUND ALUMINUM BALUSTER RAIL KITS – 36" HEIGHT**

Description	White	Khaki	Sand
6' x 36" H – Level Rail Kit	<b>73019583</b>	<b>73019568</b>	<b>73041549</b>
8' x 36" H – Level Rail Kit	<b>73019632</b>	<b>73019617</b>	<b>73041550</b>
10' x 36" H – Level Rail Kit	<b>73019507</b>	<b>N/A</b>	<b>N/A</b>
6' x 36" H – 26° to 38° Stair Rail Kit	<b>73019580</b>	<b>N/A</b>	<b>N/A</b>
8' x 36" H – 26° to 38° Stair Rail Kit	<b>73019629</b>	<b>73019623</b>	<b>73041553</b>

Kits include top and bottom rails with aluminum stiffeners, balusters, bracket kit, support foot (10' kits only) and installation hardware.

T-TOP BRACKET KITS			
Description	White	Khaki	Sand
Level Bracket Set (2 top and 2 bottom brackets)	<b>73019685</b>	<b>73019681</b>	<b>73041560</b>
Stair Bracket Set (2 top and 2 bottom brackets)	<b>73019686</b>	<b>73019682</b>	<b>73041561</b>
Swivel Stair Bracket Set (2 top and 2 bottom brackets)	<b>73018804</b>	<b>N/A</b>	<b>N/A</b>
Swivel Level-Angle Bracket Set (2 top and 2 bottom brackets)	<b>73018805</b>	<b>N/A</b>	<b>N/A</b>
Angle Bracket Set (1 pair – cut to desired angle)	<b>73021923</b>	<b>73021924</b>	<b>73041562</b>



T-Top Level Brackets



T-Top Stair Brackets (26 to 38°)



T-Top Swivel Stair Brackets (0 to 45°)

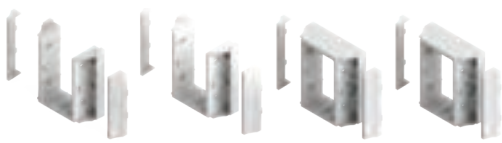


T-Top Swivel Level-Angle Brackets (0 to 44°)



T-Top Angle Brackets

DECK TOP BRACKET KITS			
Description	White	Khaki	Sand
Level Bracket Set (2 top and 2 bottom brackets)	<b>73019670</b>	<b>73019666</b>	<b>73041554</b>
Stair Bracket Set (2 top and 2 bottom brackets)	<b>73019671</b>	<b>73019667</b>	<b>73041555</b>
Angle Bracket Set (1 pair – cut to desired angle)	<b>73021926</b>	<b>73021927</b>	<b>73041556</b>



Deck Top Level Brackets



Deck Top Stair Brackets (26 to 38°)



Deck Top Angle Brackets

COLUMN & ANGLE ADAPTERS			
Description	White	Khaki	Sand
8" Round Column Adapter (2 pack)	<b>73019680</b>	<b>73019674</b>	<b>73041557</b>
22.5° Angle Adapter (1 top and 1 bottom brackets)	<b>73019678</b>	<b>73019672</b>	<b>73041559</b>
45° Angle Adapter (1 top and 1 bottom brackets)	<b>73019679</b>	<b>73019673</b>	<b>73041558</b>



Round Column Adapter  
for 8" Columns



22.5° Adapter



45° Adapter



VINYL RAIL GATE KITS			
Description	White	Khaki	Sand
Standard Width Gate Kit – 36" H – 1¼" Square Balusters	<b>73018135</b>	<b>N/A</b>	<b>N/A</b>
Custom Width Gate Kit – 36" H – 1¼" Square Balusters	<b>73045025</b>	<b>73045026</b>	<b>73045027</b>
Custom Width Gate Kit – 36" H – 1½" Square Balusters	<b>73045028</b>	<b>73045029</b>	<b>73045030</b>
Custom Width Gate Kit – 36" H – 1¼" Turned Balusters	<b>73045034</b>	<b>N/A</b>	<b>N/A</b>
Custom Width Gate Kit – 36" H – 1½" Turned Balusters	<b>73045044</b>	<b>73045045</b>	<b>73045046</b>
Custom Width Gate Kit – 36" H – ¾" Round Aluminum Balusters	<b>73045031</b>	<b>73045032</b>	<b>73045033</b>
Custom Width Gate Kit – 42" H – 1¼" Square Balusters	<b>73045035</b>	<b>73045036</b>	<b>73045037</b>
Custom Width Gate Kit – 42" H – 1½" Square Balusters	<b>73045038</b>	<b>73045039</b>	<b>73045040</b>

Standard gate kit has a maximum opening width of 36". Custom gate kits have a maximum width opening up to 48". Gate kits include everything to build a gate panel. Gate hardware sold separately.



Standard Gate Kit



Custom Gate Kit

VINYL GATE HARDWARE		
Description	Black	White
Standard Wrap Hinge Pair	<b>73028117</b>	<b>73025512</b>
Two-Sided Locking Latch	<b>73050187</b>	<b>73050188</b>
Gravity Latch	<b>73002252</b>	<b>73025491</b>
24" Heavy-Duty Drop Rod	<b>73014305</b>	<b>73014306</b>

**LED lighting options are available for use with Finyl Line. For details and options, see page 64.**

# TITAN PRO RAIL®

Titan Pro Rail Vinyl Railing — created with the installer in mind — features rail sections that assemble in minutes and metal-to-metal connections that are engineered for easy and safe installation. Panels are supported by structural steel posts clad in low-maintenance vinyl. Titan Pro Rail is ideal for residential and commercial applications.



Titan Pro Rail in White.

## PRODUCT BENEFITS

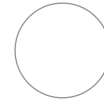
- Metal-to-metal connections for maximum strength
- Structural steel posts feature pre-attached brackets
- Code compliant
- Made in the USA

## HOMEOWNER BENEFITS

- Structural steel vinyl-clad posts provide superior strength and support
- Easy to maintain
- Transferrable Limited Lifetime Warranty

## DESIGN VERSATILITY

- Hidden fasteners provide a clean, finished look
- Available in 2 colors



White



Khaki



## SOLARGUARD®

SolarGuard technology provides fade resistance so that your outdoor living products will maintain a like-new finish for years to come.

Titan Pro Rail in White.



POST KITS – WITH 2" BOTTOM SPACE	
Description	White
3.4" x 3.4" x 38.125" Blank Post Assembly for 36" Railing Height	<b>73018657</b>
3.4" x 3.4" x 38.125" End Post Assembly for 36" Railing Height	<b>73018662</b>
3.4" x 3.4" x 38.125" Mid Post Assembly for 36" Railing Height	<b>73018664</b>
3.4" x 3.4" x 38.125" Corner Post Assembly for 36" Railing Height	<b>73018660</b>
3.4" x 3.4" x 44.125" Blank Post Assembly for 42" Railing Height	<b>73018658</b>
3.4" x 3.4" x 44.125" End Post Assembly for 42" Railing Height	<b>73018663</b>
3.4" x 3.4" x 44.125" Mid Post Assembly for 42" Railing Height	<b>73018665</b>
3.4" x 3.4" x 44.125" Corner Post Assembly for 42" Railing Height	<b>73018661</b>
3.4" x 3.4" x 50.125" Blank Post Assembly for 42" Railing Height (for stairs)	<b>73018659</b>

Post kits include steel post insert, vinyl sleeve, brackets with covers (except blank posts), trim ring and two vinyl shims. Titan Posts with sleeve are 3.4" x 3.4" square and bottom brackets are set for a 2" bottom space.



Blank Post



End Post



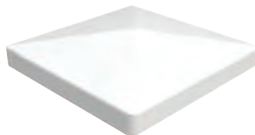
Mid Post



Corner Post

POST ACCESSORIES	
Description	White
Flat Post Cap	<b>73018242</b>
Decorative Post Cap	<b>73018240</b>

For other post options (including 4" x 4", 5" x 5", 6" x 6" and structural posts) and additional accessories if not using a Titan post, see our vinyl posts and post accessories on page 42. Only the Low Profile or 4-piece Adjustable trim ring provide sufficient clearance for Titan bottom brackets.



Flat Cap



Decorative Cap

## RAIL KITS – 1¼" SQUARE BALUSTER

Description	White	Khaki
6' x 36" H – Level Rail Kit	<b>73018163</b>	<b>73018165</b>
8' x 36" H – Level Rail Kit	<b>73018012</b>	<b>73018171</b>
10' x 36" H – Level Rail Kit	<b>73018157</b>	<b>73018159</b>
6' x 36" H – 32° to 38° Stair Rail Kit	<b>73018200</b>	<b>73018202</b>
8' x 36" H – 32° to 38° Stair Rail Kit	<b>73018207</b>	<b>N/A</b>
6' x 42" H – Level Rail Kit	<b>73018167</b>	<b>73018168</b>
8' x 42" H – Level Rail Kit	<b>73018173</b>	<b>73018174</b>
10' x 42" H – Level Rail Kit	<b>73018161</b>	<b>73018162</b>
6' x 42" H – 32° to 38° Stair Rail Kit	<b>73018204</b>	<b>73018205</b>
8' x 42" H – 32° to 38° Stair Rail Kit	<b>73018211</b>	<b>N/A</b>

Brackets not included in rail kits. Titan posts come with pre-attached brackets for ease of install for level applications; if not using Titan posts, level brackets must be purchased separately from your rail kit. Stair brackets sold separately.



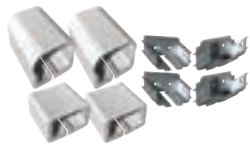
1¼" Square Balusters

BRACKET ACCESSORIES		
Description	White	Khaki
Level Bracket Kit – 2 Pair (4 steel brackets and 4 vinyl bracket covers)	<b>73018011</b>	<b>73018228</b>
Stair Bracket Kit – 2 Pair (4 steel brackets and 4 vinyl bracket covers)	<b>73018229</b>	<b>73018232</b>
No-Cut Stair Bracket Kit – 2 Pair	<b>73018230</b>	<b>73018231</b>
45° Bracket Adapter Kit – 1 Pair	<b>73018225</b>	<b>73018226</b>
22.5° Bracket Adapter Kit – 1 Pair	<b>73018223</b>	<b>73018224</b>
Round Column Adapter Kit – 1 Pair	<b>73018251</b>	<b>N/A</b>
Level Bracket Attachment Jig	<b>73018227</b>	
2-Piece Trim Ring*	<b>73018915</b>	

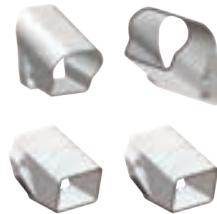
\*Titan posts include 2-piece trim ring; if a replacement is needed, this item can be ordered.



Level Bracket Kit



Stair Bracket Kit



No-Cut Stair Bracket Kit



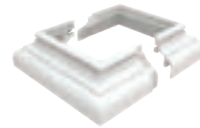
45° Bracket Adapter



22.5° Bracket Adapter



Round Column Adapter  
for 8" Columns



2-Piece Trim Ring



Bracket Jig

## VINYL RAIL GATE KITS

Description	White	Khaki	Sand
Standard Width Gate Kit – 36" H – 1¼" Square Balusters	<b>73018135</b>	<b>N/A</b>	<b>N/A</b>
Custom Width Gate Kit – 36" H – 1¼" Square Balusters	<b>73045025</b>	<b>73045026</b>	<b>73045027</b>
Custom Width Gate Kit – 36" H – 1½" Square Balusters	<b>73045028</b>	<b>73045029</b>	<b>73045030</b>
Custom Width Gate Kit – 36" H – 1¼" Turned Balusters	<b>73045034</b>	<b>N/A</b>	<b>N/A</b>
Custom Width Gate Kit – 36" H – 1½" Turned Balusters	<b>73045044</b>	<b>73045045</b>	<b>73045046</b>
Custom Width Gate Kit – 36" H – ¾" Round Aluminum Balusters	<b>73045031</b>	<b>73045032</b>	<b>73045033</b>
Custom Width Gate Kit – 42" H – 1¼" Square Balusters	<b>73045035</b>	<b>73045036</b>	<b>73045037</b>
Custom Width Gate Kit – 42" H – 1½" Square Balusters	<b>73045038</b>	<b>73045039</b>	<b>73045040</b>

Standard gate kit has a maximum opening width of 36". Custom gate kits have a maximum width opening up to 48". Gate kits include everything to build a gate panel. Gate hardware sold separately.



Standard Gate Kit



Custom Gate Kit

## VINYL GATE HARDWARE

Description	Black	White
Standard Wrap Hinge Pair	<b>73028117</b>	<b>73025512</b>
Two-Sided Locking Latch	<b>73050187</b>	<b>73050188</b>
Gravity Latch	<b>73002252</b>	<b>73025491</b>
24" Heavy-Duty Drop Rod	<b>73014305</b>	<b>73014306</b>

**LED lighting options are available for use with Titan Pro Rail.  
For details and options, see page 64.**

# VINYL ADA HANDRAIL

Vinyl ADA Handrail is a code compliant graspable handrail that provides added safety and security to stairs and ramps. Featuring versatile components and metal-to-metal connections for maximum strength, this system can be joined in many different configurations.



Vinyl ADA Handrail in White.



## PRODUCT BENEFITS

- Metal-to-metal connections for maximum strength
- Versatile components that can accommodate angles up to 90°
- Code compliant
- Made in the USA

## HOMEOWNER BENEFITS

- Easy to maintain
- Transferrable Limited Lifetime Warranty

## DESIGN VERSATILITY

- Available in 2 colors



White

Khaki



## SOLARGUARD®

SolarGuard technology provides fade resistance so that your outdoor living products will maintain a like-new finish for years to come.



Vinyl ADA Handrail in White.

# VINYL ADA HANDRAIL

## VINYL ADA HANDRAIL - LINEALS

Description	White	Khaki
120" Vinyl Clad Aluminum Handrail	<b>73018380</b>	<b>73018808</b>
104" Vinyl Clad Aluminum Handrail	<b>73018377</b>	<b>73018806</b>
80" Vinyl Clad Aluminum Handrail	<b>73018381</b>	<b>73018810</b>
180° Return Loop	<b>73018392</b>	<b>73018818</b>



Vinyl Clad Aluminum Handrail



180° Return Loop

## VINYL ADA HANDRAIL - MOUNTING BRACKETS

Description	White	Khaki
Mounting Bracket	<b>73018384</b>	<b>73018812</b>
Inside Corner Mounting Bracket	<b>73018394</b>	<b>73018820</b>
90° Post Return	<b>73018398</b>	<b>73018824</b>
Straight Wall Return	<b>73018402</b>	<b>73018826</b>

A mounting bracket is required every 6' of Handrail lineal. Hardware to attach mounting brackets to lineals included; hardware to attach to posts not included.



Mounting Bracket



Inside Corner Mounting Bracket



90° Post Return



Straight Wall Return

**VINYL ADA HANDRAIL - JOINERS**

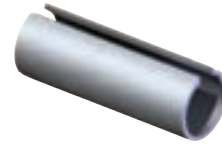
Description	White	Khaki
90° Corner	<b>73018386</b>	<b>73018814</b>
Internal Adjustable Joiner (no color)	<b>73018382</b>	
Internal Straight Joiner (no color)	<b>73018399</b>	



90° Corner



Internal Adjustable Joiner



Internal Straight Joiner

**VINYL ADA HANDRAIL - ACCESSORIES**

Description	White	Khaki
Joint Ring	<b>73018396</b>	<b>73018822</b>
End Cap	<b>73018390</b>	<b>73018816</b>



Joint Ring



End Cap

# ALUMINUM ADA HANDRAIL

Aluminum ADA Handrail is the perfect solution for applications where durable, low-maintenance, graspable metal handrail is desired. Strong, metal-to-metal connections ensure dependable safety and security for any stair or ramp that requires ADA code compliance.



ADA Handrail in Matte Black.

## PRODUCT BENEFITS

- Metal-to-metal connections for maximum strength
- Versatile components that can accommodate angles up to 90°
- Code compliant
- Made in the USA

## HOMEOWNER BENEFITS

- Premium powder coating meets and exceeds AAMA 2604 specifications
- Advanced weather testing, including 10,000 hours of salt spray testing
- Easy to maintain
- Transferrable Limited Lifetime Warranty

## DESIGN VERSATILITY

- Powder coated colors match and complement both Avalon Aluminum Railing and MetalWorks Excalibur railing
- Available in 4 colors



## SOLARGUARD®

SolarGuard technology provides fade resistance so that your outdoor living products will maintain a like-new finish for years to come.



ADA Handrail in Matte Bronze.

# ALUMINUM ADA HANDRAIL

## ALUMINUM ADA HANDRAIL – LINEALS

Description	White	Matte Black	Hammered Bronze	Matte Bronze
1½" x 80" Aluminum Lineal	<b>73019171</b>	<b>73019169</b>	<b>73019170</b>	<b>73041311</b>
1½" x 104" Aluminum Lineal	<b>73019175</b>	<b>73019173</b>	<b>73019174</b>	<b>73041309</b>
1½" x 120" Aluminum Lineal	<b>73019179</b>	<b>73019177</b>	<b>73019178</b>	<b>73041310</b>
180° Return Loop	<b>73019227</b>	<b>73019229</b>	<b>N/A</b>	<b>73041325</b>



Aluminum Handrail



180° Return Loop

## ALUMINUM ADA HANDRAIL – MOUNTING BRACKETS

Description	White	Matte Black	Hammered Bronze	Matte Bronze
Mounting Bracket	<b>73019151</b>	<b>73019149</b>	<b>73019150</b>	<b>73041323</b>
Mounting Bracket for Vinyl Posts	<b>N/A</b>	<b>73042847</b>	<b>N/A</b>	<b>N/A</b>
Inside Corner Mounting Bracket	<b>73041318</b>	<b>73041317</b>	<b>N/A</b>	<b>73041315</b>
90° Post Return	<b>73019147</b>	<b>73019145</b>	<b>73019146</b>	<b>73041324</b>
90° Post Return for Vinyl Posts	<b>N/A</b>	<b>73042848</b>	<b>N/A</b>	<b>N/A</b>
Straight Wall Return	<b>73019155</b>	<b>73019153</b>	<b>73019154</b>	<b>73041326</b>

A mounting bracket is required every 6' of Handrail lineal. Hardware to attach mounting brackets to steel or aluminum posts included and hardware for vinyl posts included in brackets indicating use for vinyl posts.



Mounting Bracket



Mounting Bracket for Vinyl Posts



Inside Corner Mounting Bracket



90° Post Return



90° Post Return for Vinyl Posts



Straight Wall Return

## ALUMINUM ADA HANDRAIL – JOINERS

Description	White	Matte Black	Hammered Bronze	Matte Bronze
External Adjustable Joiner	<b>73019167</b>	<b>73019165</b>	<b>73019166</b>	<b>73041314</b>
Internal Straight Joiner (no color)	<b>73018399</b>			
90° Corner	<b>73019163</b>	<b>73019161</b>	<b>73019162</b>	<b>73041312</b>



External Adjustable Joiner



Internal Straight Joiner



90° Corner

## ALUMINUM ADA HANDRAIL – ACCESSORIES

Description	White	Matte Black	Hammered Bronze	Matte Bronze
End Cap	<b>73019159</b>	<b>73019157</b>	<b>73019158</b>	<b>73041313</b>
Joint Ring	<b>73041322</b>	<b>73041321</b>	<b>N/A</b>	<b>73041319</b>
Spacer Block*	<b>73041469</b>	<b>73042849</b>	<b>N/A</b>	<b>73043094</b>

\*Spacer Block is ¼" thick and used to help block out brackets for narrower, 2" Over-the-Top in-line Avalon posts installed between standard 2½" Avalon posts.



End Cap



Joint Ring



Spacer Block

# LIGHTING

Solar Post Caps and a full LED Lighting system are available for use with all Barrette Outdoor Living vinyl, aluminum and steel railing products. Under-rail LED lighting strips feature an adhesive backing and easily connect with a 50W Bluetooth compatible transformer. Additional LED accessories include post caps, dome lights, flush deck and side/stair lights.



Endurance Original Rail with square balusters in White with Contemporary LED Light Post Caps, Dome Lights, and Flush Deck Lights (set in stairs).



## PRODUCT BENEFITS

- LED plug-and-play lighting system does not require cutting or splicing of wires
- Under-rail light channel available for certain railing styles
- 2- and 5-way splitters and additional lighting wire available

## HOMEOWNER BENEFITS

- Long-lasting, true white LED lights — rated at 50,000 hours
- Adjust and control lighting with smartphone\*
- Limited Warranty

*\*available only with transformer*

## DESIGN VERSATILITY

- Post cap and/or under-rail LED lighting options
- Color matched post caps available for most railing styles
- Solar post caps with down lighting available for dramatic lighting effect

Transform posts and top rail in Caramel with Avalon Aluminum Railing infill in Matte Black with Under-Rail LED lighting.

## Product Spotlight

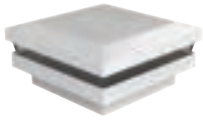
Bluetooth compatible transformer for LED lighting can be controlled on your smartphone!



# LIGHTING

## ALUMINUM RAIL – LIGHTED ACCESSORIES

Description	White	Matte Black	Matte Bronze
2½" 3-in-1 LED Light Post Cap (1.6W)	<b>73021946</b>	<b>73021947</b>	<b>73021948</b>
2½" Solar Light Post Cap	<b>73044955</b>	<b>73044954</b>	<b>73044941</b>
2½" Solar Down Light Post Cap	<b>73044936</b>	<b>73044935</b>	<b>73044953</b>
4¼" Solar Light Post Cap	<b>73050527</b>	<b>73050526</b>	<b>73050528</b>
4¼" LED Light Post Cap (0.80W)	<b>73050524</b>	<b>73050523</b>	<b>73050525</b>
92" Under-Rail LED Lighting (3W for 92" length)	<b>73019376</b>		
Flush Deck Light (0.40W)	<b>73019403</b>		



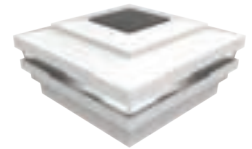
3-in-1 LED Light Post Cap



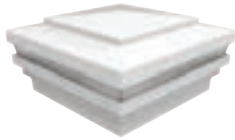
Solar Light Post Cap



Solar Down Light Post Cap



4¼" Solar Light Post Cap



4¼" LED Light Post Cap



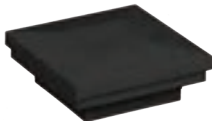
92" Under-Rail LED Lighting (3W)



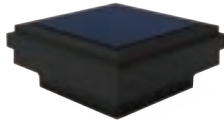
Flush Deck Light (0.40W)

## STEEL RAIL – LIGHTED ACCESSORIES

Description	Matte Black
2" LED Post Cap (0.80W)	<b>73043000</b>
3" LED Post Cap (0.80W)	<b>73043001</b>
2" Solar Down Light Post Cap	<b>73044933</b>
3" Solar Down Light Post Cap	<b>73044934</b>
Flush Deck Light (0.40W)	<b>73019403</b>



LED Lighted Post Cap (2" or 3")



Solar Down Light Post Cap (2" or 3")



Flush Deck Light (0.40W)

**VINYL RAIL – LIGHTED ACCESSORIES**

Description	White	Khaki	Sand
4" x 4" Contemporary Solar Post Cap	73019234	73045510	73045511
4" x 4" Contemporary LED Post Cap (0.80W)	73019377	73045506	73045507
5" x 5" New England LED Post Cap (0.80W)	73043928	N/A	N/A
5" x 5" Contemporary Solar Post Cap	73013110	N/A	N/A
Dome Light (0.80W)	73019404	73045508	73045509
Stair/Side Light (0.40W)	73019411	N/A	N/A
92" Under-Rail LED Lighting (3W for 92" length)	73019376		
Flush Deck Light (0.40W)	73019403		



Contemporary Post Cap (Solar or LED)



New England LED Post Cap (0.80W)



Dome Light (0.80W)



Side/Stair Light (0.40W)



92" Under-Rail LED Lighting (3W)



Flush Deck Light (0.40W)

**LED LIGHTING – COMPONENTS**

Description	SKU
Bluetooth Transformer for LED Lighting System	73041277
2-Way Splitter	73019370
5-Way Splitter	73019371
2' Electrical Lighting Wire	73032449
5' Electrical Lighting Wire	73019375
7' Electrical Lighting Wire	73019373
9' Electrical Lighting Wire	73019374
92" Under-Rail Light Channel (10 pack for use with Endurance Original Rail, Finyl Line and Titan Pro Rail) – WHITE	73024866

Transformer is 50W. Includes photocell, built-in dimmer, timer, and remote. Transformer is Bluetooth capable; "SmartPower50" app available from the App Store and Google Play.



Transformer (50W) with Bluetooth capability



2-Way Splitter



Lighting Wire – available in 2', 5', 7' or 9' lengths.



5-Way Splitter



Under-Rail Light Channel (92" length)

# DECORATIVE SCREEN PANELS

Decorative Screen Panels offer a unique and attractive way to customize an indoor or outdoor setting. Allowing for creativity with privacy screening, Decorative Screen Panels are the perfect home accent to enhance a room, patio, garden or a stylish solution for under a deck. New for 2022, several of our railing products also offer options to use Decorative Screen Panels as infills. Panels can also be installed up to three high in our aluminum frame kit — creating a divider screen for increased privacy wherever it is needed.



Morse Decorative Screen Panels in White with Matte Black Frame Kit.

## PRODUCT BENEFITS

- Low-maintenance, impact resistant material ensures stability in extreme climates
- Select designs feature a dimensional effect for added realism
- Made in the USA

## HOMEOWNER BENEFITS

- Resists warping, rot, twisting, splitting, discoloration and scratching
- Can be used as decorative infill in select railing products
- Limited Lifetime Warranty

## DESIGN VERSATILITY

- Available in 8 designs and 2 sizes
- Paintable
- Wide variety of color options



Black



Gray



White



Brazilian Walnut



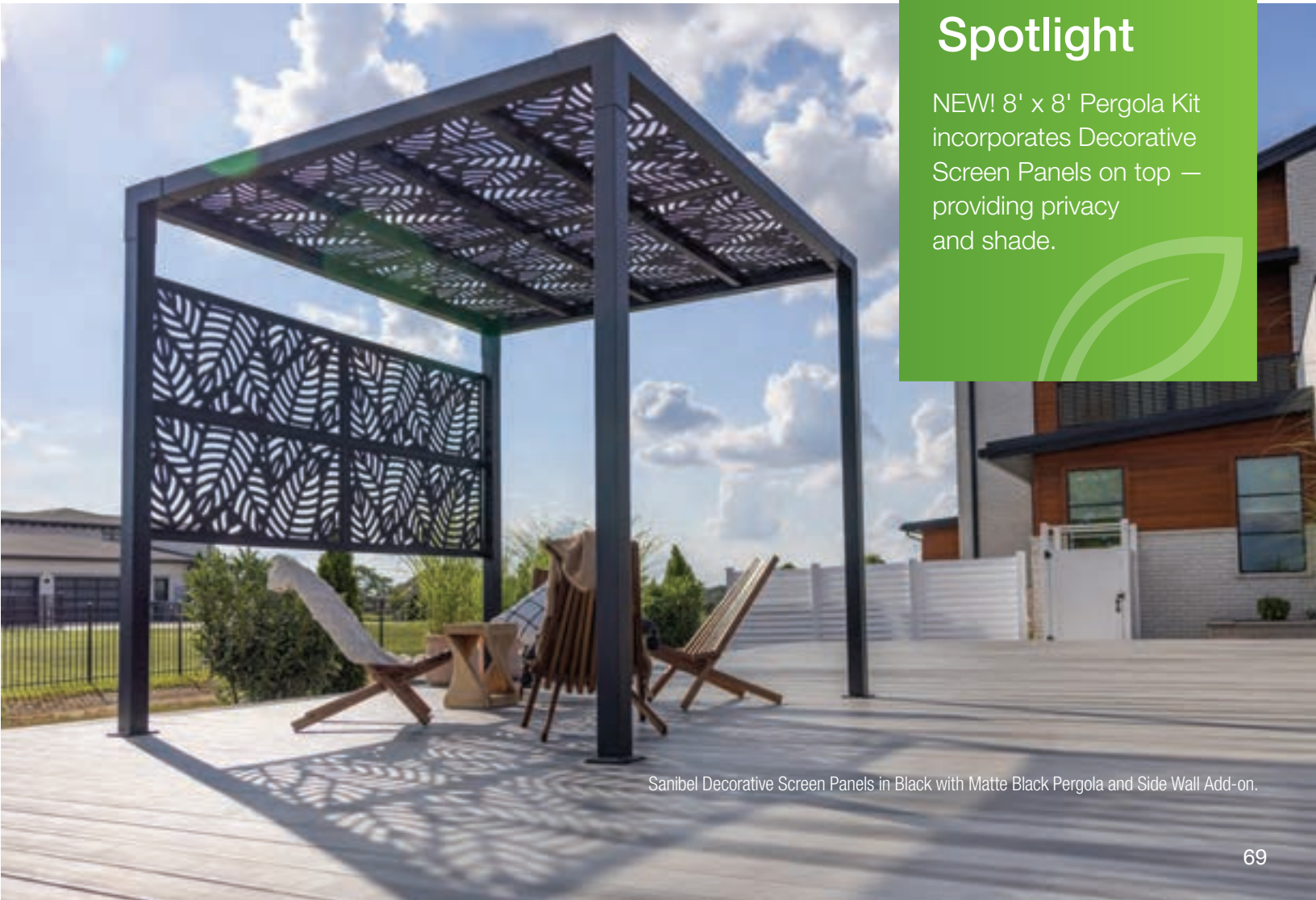
Umber



Saddle

## Product Spotlight

NEW! 8' x 8' Pergola Kit incorporates Decorative Screen Panels on top — providing privacy and shade.



Sanibel Decorative Screen Panels in Black with Matte Black Pergola and Side Wall Add-on.

# DECORATIVE SCREEN PANELS

2' X 4' DECORATIVE SCREEN PANELS				
Description	Boardwalk	Morse	Fretwork	Sprig
2' x 4' x 0.3" – WHITE	73042821	73004795	73004785	73004790
2' x 4' x 0.3" – GRAY	73050384	73050383	73050381	73050382
2' x 4' x 0.3" – SADDLE	73042824	73004798	73004788	73004793
2' x 4' x 0.3" – BRAZILIAN WALNUT	N/A	N/A	N/A	73004687
2' x 4' x 0.3" – BLACK	73042822	73004796	73004786	73004791
Description	Sanibel		Slate	
2' x 4' x 0.3" – UMBER	73050359		N/A	
2' x 4' x 0.3" – BLACK	73050358		73050082	

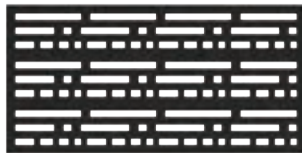
Actual size: 23.88" x 47.88" x 0.3".

NEW! 3' X 6' DECORATIVE SCREEN PANELS				
Description	Boardwalk	Sanibel	River Rock	Optic
3' x 6' x 0.3" – WHITE	73045664	N/A	73045668	N/A
3' x 6' x 0.3" – GRAY	73045665	N/A	73045669	N/A
3' x 6' x 0.3" – SADDLE	73045666	N/A	N/A	N/A
3' x 6' x 0.3" – BLACK	73030561	73050460	73045667	73050083

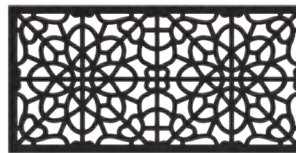
Actual size: 36" x 68" x 0.3".



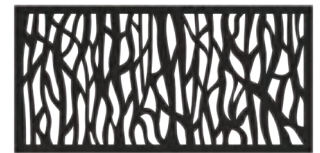
Boardwalk  
US Des. Pat. No. D889,142



Morse  
US Des. Pat. No. D843,607



Fretwork  
US Des. Pat. No. D843,608



Sprig  
US Des. Pat. No. D843,605



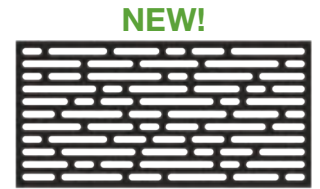
Sanibel  
Design Patent Pending



Slate  
Design Patent Pending



River Rock  
Design Patent Pending



Optic  
Design Patent Pending

Decorative Screen Panels are designed with a matte, textured finish to allow them to be painted for complete customization.

DECORATIVE SCREEN PANEL HARDWARE	
Description	
Fastener Kit (12 stainless steel screws and 12 color matched screw covers) – WHITE	73025526
Fastener Kit (12 stainless steel screws and 12 color matched screw covers) – GRAY	73050385
Fastener Kit (12 stainless steel screws and 12 color matched screw covers) – SADDLE	73025529
Fastener Kit (12 stainless steel screws and 12 color matched screw covers) – BRAZILIAN WALNUT	73004820
Fastener Kit (12 stainless steel screws and 12 color matched screw covers) – UMBER	73050380
Fastener Kit (12 stainless steel screws and 12 color matched screw covers) – BLACK	73025527

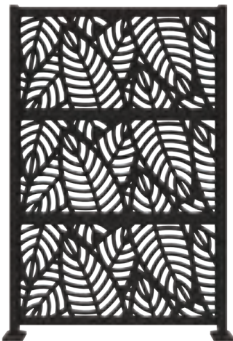
**DECORATIVE SCREEN PANEL FRAME KIT**

Description	Matte Black
2' x 4' Horizontal Frame Kit (holds up to three 2' x 4' Decorative Screen Panels — sold separately)	<b>73040779</b>
2' x 4' Line Post Kit (use with Frame Kit to create a continuous section)	<b>73045675</b>
2' x 4' Corner Post Kit (use with Frame Kit to create a corner section)	<b>73045676</b>
3' x 6' Horizontal Frame Kit (holds up to two 3' x 6' Decorative Screen Panels — sold separately)	<b>73045672</b>
3' x 6' Vertical Frame Kit (holds one 3' x 6' Decorative Screen Panel — sold separately)	<b>73050157</b>
3' x 6' Line Post Kit (use with Horizontal or Vertical Frame Kit to create a continuous section)	<b>73045673</b>
3' x 6' Corner Post Kit (use with Horizontal or Vertical Frame Kit to create a corner section)	<b>73045674</b>

2' x 4' Decorative Screen Panel Frame Kit contains two 2 aluminum end posts, 2 top/bottom U-channels, 2 mid H-channels, surface mounting kit, post caps and hardware.

3' x 6' Decorative Screen Panel Frame Kits contain 2 aluminum end posts, 2 top/bottom U-channels, surface mounting kit, post caps and hardware.

Line and Corner Post Kits contain one 2" aluminum post (for either line or corner application), 2 top/bottom U-channels, 2 mid H-channels, surface mounting kit, post cap and hardware.



2' x 4' Frame Kit  
(Decorative Screen Panels sold separately)

**NEW!**



3' x 6' Horizontal Frame Kit  
(Decorative Screen Panels sold separately)

**NEW!**



3' x 6' Vertical Frame Kit  
(Decorative Screen Panels sold separately)



Line Post Kit



Corner Post Kit

**NEW! PERGOLA**

Description	Matte Black
8' x 8' Pergola – Uses eight 2' x 4' Decorative Screen Panels (sold separately)	<b>73050386</b>
Pergola Side Wall Add-on – Uses four 2' x 4' Decorative Screen Panels (sold separately)	<b>73050387</b>

**NEW!**



8' x 8' Pergola  
(Decorative Screen Panels sold separately)

**COMING SPRING 2022!**



Side Wall Add-on  
(Shown with Pergola. Pergola and Decorative Screen Panels sold separately)

# LATTICE

Lattice panels are the perfect way to add privacy and conceal unsightly outdoor areas. Easy to maintain and install, durable plastic lattice is resistant to termites and other wood-eating pests. Lattice maintains its classic look without the need for sanding, staining or painting. Available in classic diamond, privacy diamond and privacy square patterns.





## PRODUCT BENEFITS

- Low-maintenance
- Impact resistant plastic
- Matching screws, cap molding and divider molding available
- Made in the USA

## HOMEOWNER BENEFITS

- Resists warping and twisting
- Limited Lifetime Warranty

## DESIGN VERSATILITY

- Available in 3 patterns
- Wide variety of color options



White



Woodland Green



Sierra Cedar



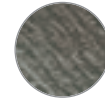
Redwood



Khaki



Brazilian Walnut



Nantucket Gray



Better Than Treated



Black

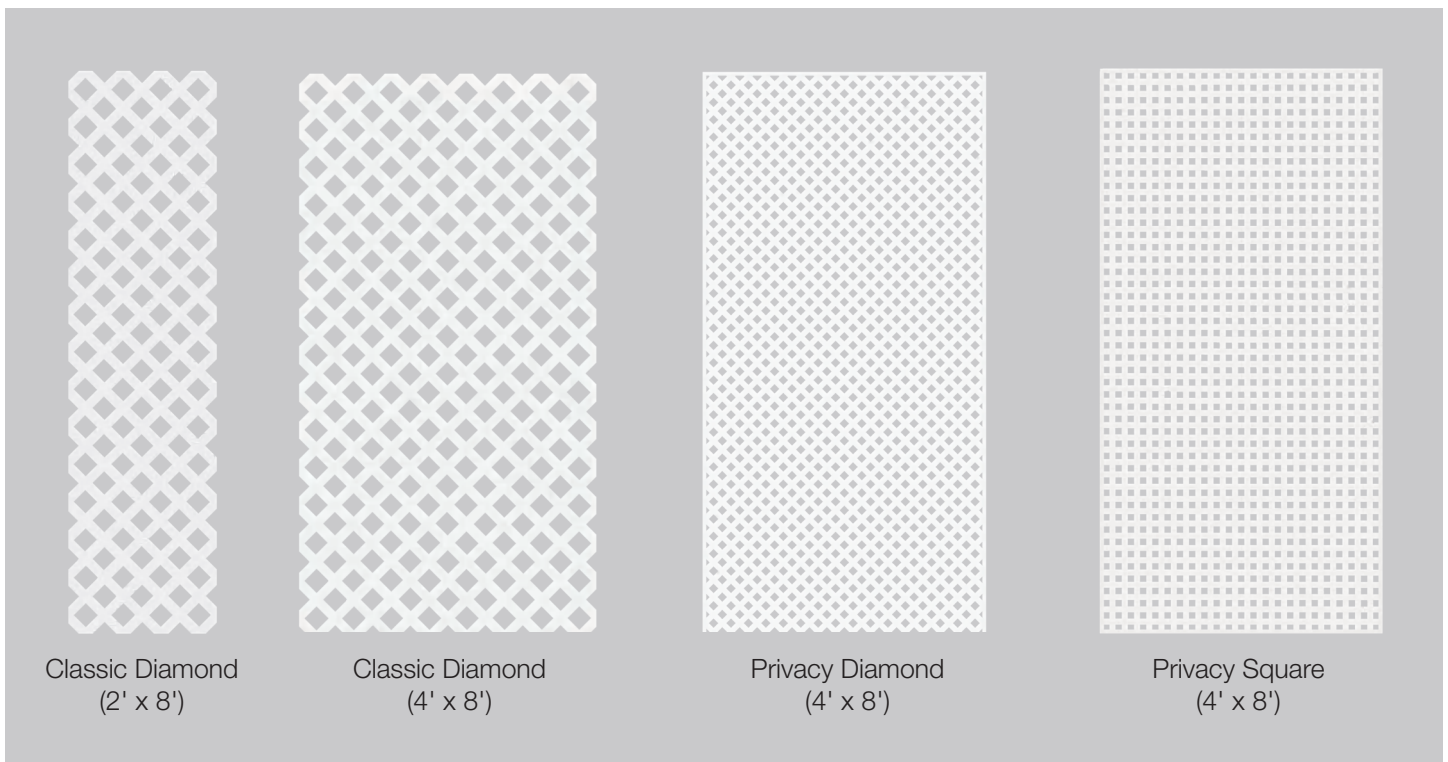


Classic Diamond Lattice in White.

# LATTICE

LATTICE				
Color	Classic Diamond (2' x 8')	Classic Diamond (4' x 8')	Privacy Diamond (4' x 8')	Privacy Square (4' x 8')
White	<b>73004010</b>	<b>73004026</b>	<b>73004042</b>	<b>73004051</b>
Woodland Green	<b>N/A</b>	<b>73004020</b>	<b>73004037</b>	<b>N/A</b>
Sierra Cedar	<b>N/A</b>	<b>73004021</b>	<b>73004038</b>	<b>N/A</b>
Redwood	<b>N/A</b>	<b>73004023</b>	<b>73004040</b>	<b>N/A</b>
Khaki	<b>N/A</b>	<b>73040661</b>	<b>73040664</b>	<b>N/A</b>
Brazilian Walnut	<b>N/A</b>	<b>73004144</b>	<b>73004142</b>	<b>N/A</b>
Nantucket Gray	<b>N/A</b>	<b>73004145</b>	<b>73004143</b>	<b>N/A</b>
Better Than Treated	<b>N/A</b>	<b>73004027</b>	<b>73004108</b>	<b>N/A</b>
Black	<b>N/A</b>	<b>73004497</b>	<b>73004479</b>	<b>N/A</b>

Lattice comes in a variety of color options and is NOT intended to be painted.



## LATTICE ACCESSORIES

Color	Cap Molding	Divider Molding	1½" Color Matched Screws*
White	73004058	73004066	73003464
Woodland Green	73004057	73004079	73003466
Sierra Cedar	73004059	73004067	73003467
Redwood	73004061	73004069	73003470
Khaki	73040670	73040671	73003473
Brazilian Walnut	73004140	73004138	73003999
Nantucket Gray	73004141	73004139	73013281
Better Than Treated	73004064	73004081	73003472
Black	73004496	73004477	73014290

\*Color Matched Screws are stainless steel and come in packs of 12.



Cap Molding



Divider Molding



1½" Color Matched  
Screws



[barretteoutdoorliving.com](http://barretteoutdoorliving.com)