

# POSSIBILITIES

Open the door to endless...



When you're working on a project, the details matter – especially when the project involves your home. Here at Stone Harbor Hardware, the details matter to us too. That's why we've taken the time to create a line of hardware that's anything but basic. From matching colored tips on our door stops to handrail brackets in every finish, you're sure to find everything you need, all in one place.

# FINISHES

Stone Harbor Hardware available from:  
[www.stoneharborhardware.com](http://www.stoneharborhardware.com)  
 ©2018 Stone Harbor Hardware LLC

Color me happy. With so many finishes to choose from, you're sure to find the perfect match.

- Polished Brass (03)
- Antique Brass (05)
- Oil-Rubbed Bronze (10B)
- Vintage Bronze (11P)
- Satin Nickel (15)
- Antique Nickel (15A)
- Matte Black (19)
- Polished Chrome (26)
- Satin Chrome (26D)



**DOOR & HOME HARDWARE**

# QUALITY

EXCELLENCE. DURABILITY. Our products are designed to go above and beyond the call, no matter what you need. Whether you're looking for a sturdy, no-nonsense handrail bracket or hardware that coordinates perfectly with your door locks, you can always count on Stone Harbor Hardware to deliver.

# STYLE

Traditional and timeless. Cool and contemporary. We have the hardware you need to match any style. From door stops and house numbers to kick plates and pulls, you'll find the perfect pieces (*in all the right finishes*) to pull your look together.

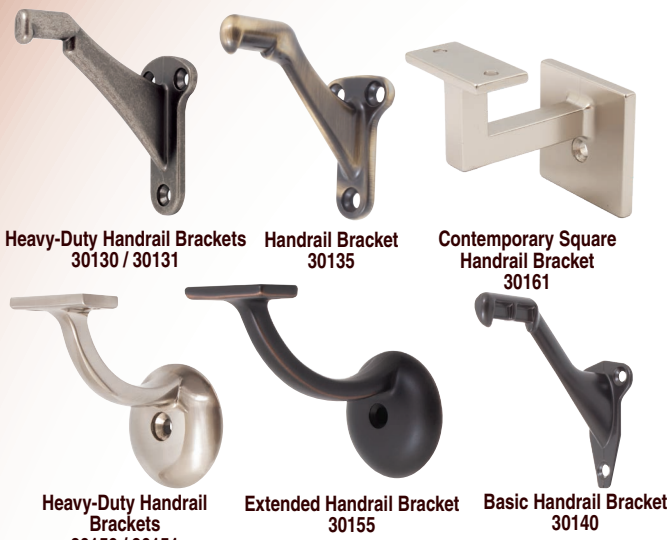


# VALUE

Who says you have to choose between value and quality? With Stone Harbor Hardware, there are no compromises. We offer dependable hardware that gets the job done right, the first time. Paired with the styles and finishes you want, it's a winning combination.

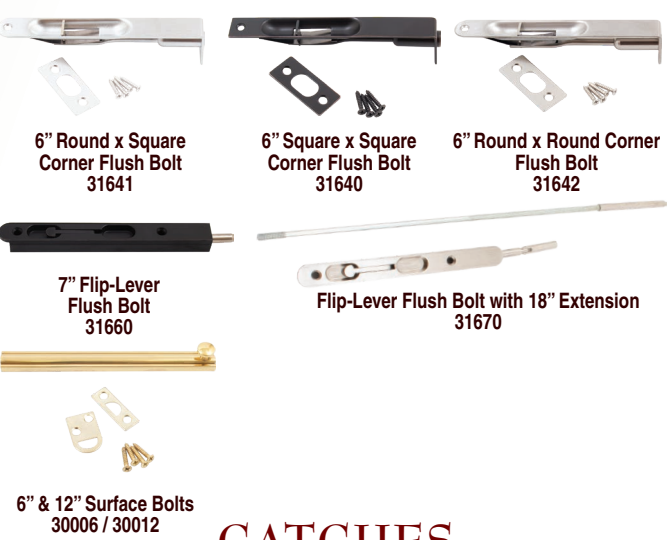


## HANDRAIL BRACKETS



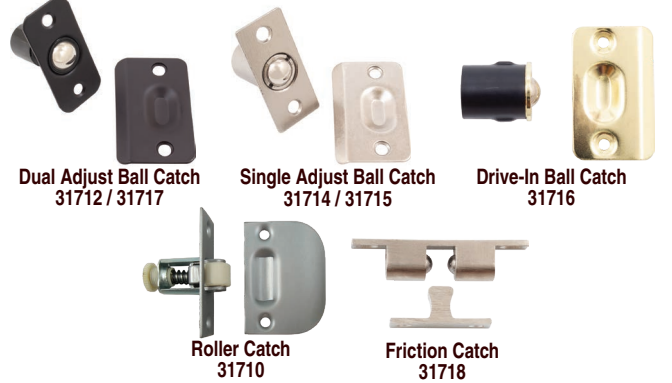
Heavy-Duty Handrail Brackets 30130 / 30131  
Handrail Bracket 30135  
Contemporary Square Handrail Bracket 30161  
Heavy-Duty Handrail Brackets 30150 / 30151  
Extended Handrail Bracket 30155  
Basic Handrail Bracket 30140

## BOLTS



6" Round x Square Corner Flush Bolt 31641  
6" Square x Square Corner Flush Bolt 31640  
6" Round x Round Corner Flush Bolt 31642  
7" Flip-Lever Flush Bolt 31660  
Flip-Lever Flush Bolt with 18" Extension 31670  
6" & 12" Surface Bolts 30006 / 30012

## CATCHES



Dual Adjust Ball Catch 31712 / 31717  
Single Adjust Ball Catch 31714 / 31715  
Drive-In Ball Catch 31716  
Roller Catch 31710  
Friction Catch 31718

## STRIKE PLATES



1-1/2" - 4" Extended Lip Strikes 501  
1-1/2" Extended Lip Strike, 2-1/2" Tall 50315  
Full Lip 1/4" Radius Corner Strike 9501  
Full Lip Square Corner Strike 9502  
3-5/8" x 1-7/8" Jamb Saver Strike 53224  
1-1/8" x 2-3/4" Square Corner T-Strike 9508  
Full Lip Round Corner Deadbolt Strike 9503  
1-1/8" x 2-3/4" Round Corner Deadbolt Strike 9506  
1-1/8" x 2-3/4" Square Corner Deadbolt Strike 9507  
1" x 2-1/4" Round Corner Deadbolt Strike 9504  
1" x 2-1/4" Square Corner Deadbolt Strike 9505

## DOOR STOPS



Heavy-Duty Hinge Pin Stops 31505 / 31515  
Hinge Pin Stop w/ Foot 31512  
Adjustable Hinge Pin Stop 31502  
Basic Hinge Pin Stop 31500  
Door Protector Hinge Pin Stop 31506  
3" Contemporary Round Door Stop 31517  
3" Heavy-Duty Solid Stops 31504 / 31513  
4" Heavy-Duty Solid Stops 31503 / 31514  
3" Standard Duty Solid Stop 31507  
3" Heavy-Duty Spring Stop 31511  
4" Standard Duty Spring Stop 31510  
2 3/4" Standard Duty Spring Stop 31519  
2-1/4" Contemporary Square Wall Stop 31408  
3" Adhesive Wall Stop 31412  
2-1/8" Concave Adhesive Wall Stop 31410  
2-1/4" Concave Wall Stop 31407  
2-1/4" Convex Wall Stop 31406  
High Rise Dome Stop 31442  
Low Rise Dome Stop 31440  
Magnetic Door Stop 31530  
Magnetic Floor Stop 31531

## PULLS & BACKPLATES



1-1/4" Bi-Fold Knob 30054  
1-1/2" Bi-Fold Knob 30056  
1-1/2" Traditional Bi-Fold Knob 30052  
1-3/4" Ringed Bi-Fold Knob 30115  
1-1/4" Die-Cast Bi-Fold Knob 30120  
1-1/2" Die-Cast Bi-Fold Knob 30121  
1-3/4" Die-Cast Backplate for 30120 & 30121 Knobs 30119  
1-1/4" Die-Cast Round Bi-Fold Knob w/ 1-3/4" Backplate 30060  
1-1/4" Die-Cast Round Bi-Fold Knob 30058  
Large Rectangular Flush Pull 30227  
Rectangular Flush Pull 30022  
Edge Pull 30230  
3/4" Finger Pulls 30218  
2-1/8" Cup Pull 30125

## WINDOW ACCESSORIES



Sash Lift 30026  
Casement Latch w/ Strikes 34901  
Sash Lock 30007

## HOOKS



Triple Robe Hook 30303  
Coat & Hat Hook 30300  
Heavy-Duty Coat & Hat Hook 30335  
Single Robe Hook 30301  
Double Robe Hook 30302  
Locker / Ceiling Hook 30580

## DOOR ACCESSORIES



4" Kick-Down Stop 31455  
4" Heavy-Duty Kick-Down Stop 31465  
5" Heavy-Duty Kick-Down Stop 31467  
130° Clear View Door Viewer 50130  
160° Door Viewer 32160  
180° Door Viewer 32180  
160° UL Door Viewer 32165  
180° UL Door Viewer 32185  
180° UL Door Viewer w/ Cover 32187  
4" Door Knocker w/ 160° Viewer 32501  
5-1/2" Door Knocker w/ 180° Viewer 32502  
3-1/2" x 15" Push & Pull Plates 58200 / 58311  
Hole Filler Plate 50161  
6" x 30" / 6" x 34" / 8" x 34" / 10" x 34" Standard & Magnetic Kick Plates 50630 / 50634 / 50834 / 51034 (standard) 50635 & 50835 (magnetic)  
4-1/2" Door Reinforcer 50140  
Rim Storm Door Lock 30970  
Scar Plate 50135

## CLOSET HARDWARE



6', 8' & 10' Max Duty Closet Poles 75706 / 75708 / 75710  
Max Duty Closet Pole Sockets 7505  
Max Duty Closet Pole End Caps 7507  
Heavy-Duty Metal Pole Sockets 7537  
4', 6' & 8' Metal Closet Poles 75804 / 75806 / 75808  
Oval Closet Pole Sockets & Center Supports 75920 / 75921

## HOUSE NUMBERS



0 1 2 3 4 5 6 7 8 9  
4" Traditional House Numbers 504  
0 1 2 3 4  
5 6 7 8 9  
5" Contemporary House Numbers 505  
0 1 2 3 4  
5 6 7 8 9  
4" Heavy-Duty House Numbers 507

Note: Available finishes vary by item.