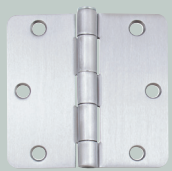


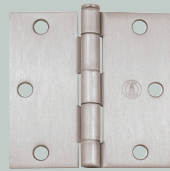
STANDARD HINGES



3 1/2" Standard Hinge
5/8" Radius Corner
P3558 / B3558
(pairs / bulk)



3 1/2" Standard Hinge
1/4" Radius Corner
P3514 / B3514
(pairs / bulk)



3 1/2" Standard Hinges
Square Corner
P3500 / B3500
(pairs / bulk)



4" Standard Hinge
5/8" Radius Corner
P4058 / B4058
(pairs / bulk)



4" Standard Hinge
1/4" Radius Corner
P4014 / B4014
(pairs / bulk)



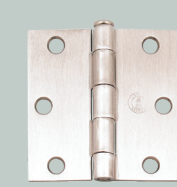
4" Standard Hinges
Square Corner
P4000 / B4000
(pairs / bulk)



4" Square x 5/8"
Radius Hinges
55814
(pairs)



4" Security Tab Hinges
5/8" Radius Corner
P4058T / B4058T
(pairs / bulk)



3" Standard Hinges
Square Corner
50014
(pairs)

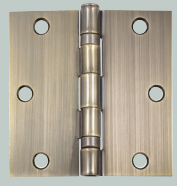
BALL BEARING HINGES



3 1/2" Ball
Bearing Hinge
5/8" Radius Corner
P3558BB / B3558BB
(pairs / bulk)



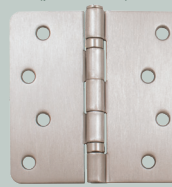
3 1/2" Ball
Bearing Hinge
1/4" Radius Corner
P3514BB / B3514BB
(pairs / bulk)



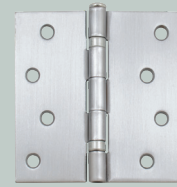
3 1/2" Ball Bearing Hinges
Square Corner
P3500BB
(pairs)



4" Ball Bearing Hinge
5/8" Radius Corner
P4058BB / B4058BB
(pairs / bulk)

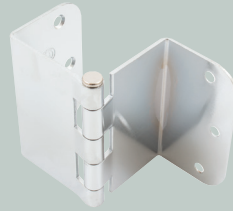


4" Ball Bearing Hinge
1/4" Radius Corner
P4014BB / B4014BB
(pairs / bulk)



4" Ball Bearing Hinge
Square Corner
P4000BB
(pairs)

SPECIALTY HINGES & ACCESSORIES



3 1/2" Swing Clear Offset Hinges
5/8" Radius Corners
55812
(pairs)



3 1/2" Swing Clear Offset Hinges
1/4" Radius Corners
51412
(pairs)



3 1/2" Adjustable Spring Hinge
1/4" Radius Corner
S3514SP



3 1/2" Adjustable Spring Hinge
5/8" Radius Corner
S3558SP



4" Adjustable Spring Hinge
5/8" Radius Corner
S4014SP



4" Adjustable Spring Hinge
1/4" Radius Corner
S4058SP



4", 5" & 6" Heavy Duty Double
Acting Spring Hinge
56504 / 56505 / 56506



3 1/2" & 4" Hinge Pins
w/ Steeple Caps
5203 / 5204



3 1/2" & 4" Hinge Pins
w/ Ball Caps
5201 / 5202

RESIDENTIAL HINGE SCREWS

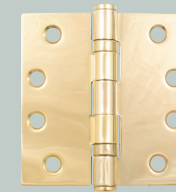


Large Door Screw Packs
(2 #9 x 2 1/4 screws & 6 #9 x 1" screws)
5930



Hinge Screw Packs
(6 #9 x 2 1/4" screws)
590

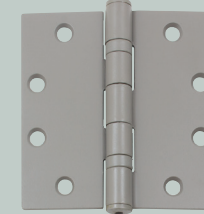
COMMERCIAL HINGES



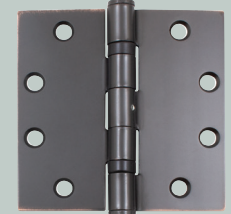
4" Square Corner Ball Bearing
.129 Gauge
CS4000BB



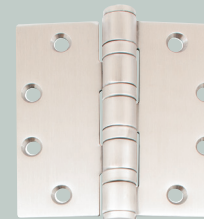
4 1/2" Square Corner Plain Bearing
.134 Gauge
CS4500



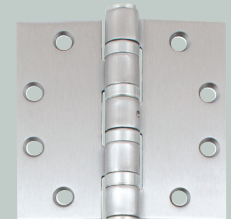
4 1/2" Square Corner Ball Bearing
.134 Gauge
CS4500BB



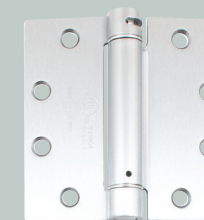
4 1/2" Square Corner Ball Bearing
NRP .134 Gauge
CS4500BBN



4 1/2" Square Corner Heavy Duty
Ball Bearing .180 Gauge
CS4500HD



4 1/2" Square Corner Heavy Duty
Ball Bearing NRP .180 Gauge
CS4500HDN



4 1/2" Adjustable Spring Hinge
Square Corner .134 Gauge
CS4500SP



5" Square Corner Ball Bearing
.145 Gauge NRP
CS5000BBN

COMMERCIAL FINISH CHART	
CS5000BBN	Polished Brass (632)
CS4000BB	Oil-Rubbed Bronze (640)
CS4500HDN	Satin Nickel (646)
CS4500HD	Satin Chrome (652)
CS4500BB	Satin Stainless Steel (630)
CS4500	Primed Gray (P)



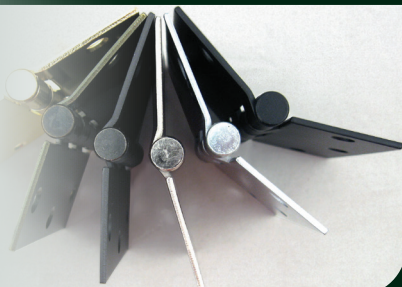
Machine Screws for
Commercial Hinges
(25 #12 x 1/2" screws)
SCMS120

OPEN THE DOOR TO A WORLD OF...

POSSIBILITIES



It's OK to make an entrance. With nearly 20 hinge styles and sizes in 10 different finishes (plus accessories like decorative hinge pin caps), you're sure to find everything you need for any door.



RESIDENTIAL FINISH CHART

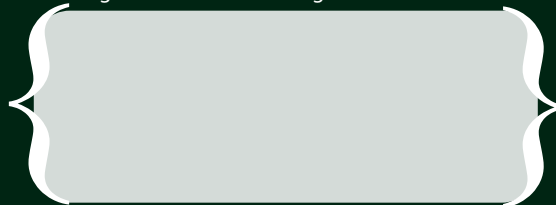
STONE HARBOR HINGES ARE AVAILABLE IN A WIDE VARIETY OF PREMIUM FINISHES, MAKING IT EASY TO COORDINATE YOUR HINGES WITH THE REST OF YOUR HARDWARE.

Note: Select finish and size configurations may not be available in all bulk or pair pack options.

	Brushed Zinc (2D)	Polished Brass (US3)	Satin Bright Brass (US3/4)	Antique Brass (US5)	Oil-Rubbed Bronze (US10B)	Vintage Bronze (US11P)	Satin Nickel (US15)	Antique Nickel (US15A)	Matte Black (US19)	Polished Chrome (US26)	Satin Chrome (US26D)	Primed Gray (P)	Satin Stainless Steel (US32D)	Gloss White (WH)
50014														
51412														
5201 / 5202 / 5203 / 5204														
55812														
55814														
56504 / 56505 / 56506														
P3500 / B3500														
P3500BB														
P3514 / B3514														
P3514BB / B3514BB														
P3558 / B3558														
P3558BB / B3558BB														
P4000 / B4000														
P4000BB														
P4014 / B4014														
P4014BB / B4014BB														
P4058 / B4058														
P4058BB / B4058BB														
P4058T / B4058T														
S3514SP														
S3558SP														
S4014SP														
S4058SP														



Stone Harbor hinges are available through a network of trusted retailers.



DOOR HINGES

