

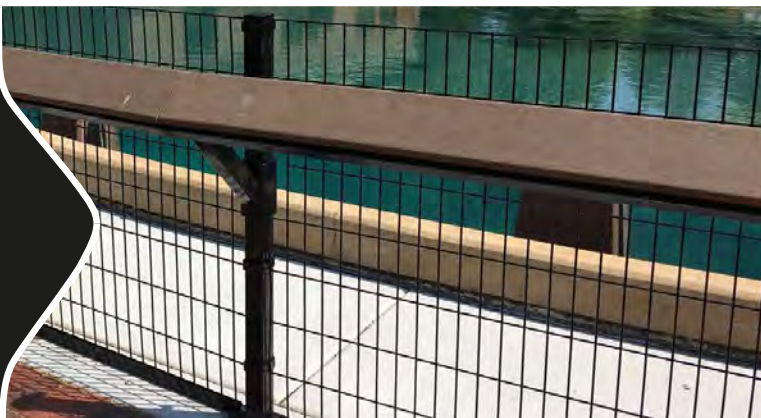


# Designmaster™

FENCING SYSTEM



**Building a beautiful world, one fence at a time.**



# STEEL Fence Solutions

Designmaster is changing the way America fences, with steel-strong industrial, commercial and residential fence and gate solutions for virtually every need, from maximum security to ornamental projects. Our incomparable quality, product diversity, maintenance-free finishes and competitive pricing give you every reason to choose Designmaster, and our customer-centric attention to detail and 25-year limited warranty ensure your satisfaction and peace of mind.



## LEED CERTIFIED

We are an active member of the US Green Building Council, the LEED certification regulatory entity for environmentally sustainable building projects.

LEED certification promotes the use of recycled and recyclable goods such as Designmaster Fence, which is manufactured from recycled steel and is a recyclable product, thanks to our advanced technologies and practices.

Designmaster Fence automatically qualifies for LEED credits. Documentation is available upon request.

## MIAMI DADE CERTIFIED

The strength and durability of Steel merge with style and elegance to produce a fencing system that is Miami-Dade certified with the highest rating of any Welded Steel Wire Fencing System, High Velocity Hurricane Zone (HVHZ).

Miami-Dade County, Florida, Notice Of Acceptance, file number 15-0903.07, EXP 03/30/2022. Miami-Dade certification is recognized worldwide as the standard for products that can withstand the most severe weather and wind loads.

## NON-TOXIC POWDER COATING

The finish on all Designmaster Fence components is 100% free of Volatile Organic Compounds and Triglycidyl Isocyanurate, (both of which are known carcinogens). This makes Designmaster Fence the best choice for public areas, schools, daycare centers, zoos, parks, stadiums and anyplace else where people or animals may contact the fence.

03 STEEL FENCE SOLUTIONS

10 FORTE

04 SYSTEM BASICS

12 FLORENCE

05 APPLICATIONS

14 MILAN

06 CLASSIC

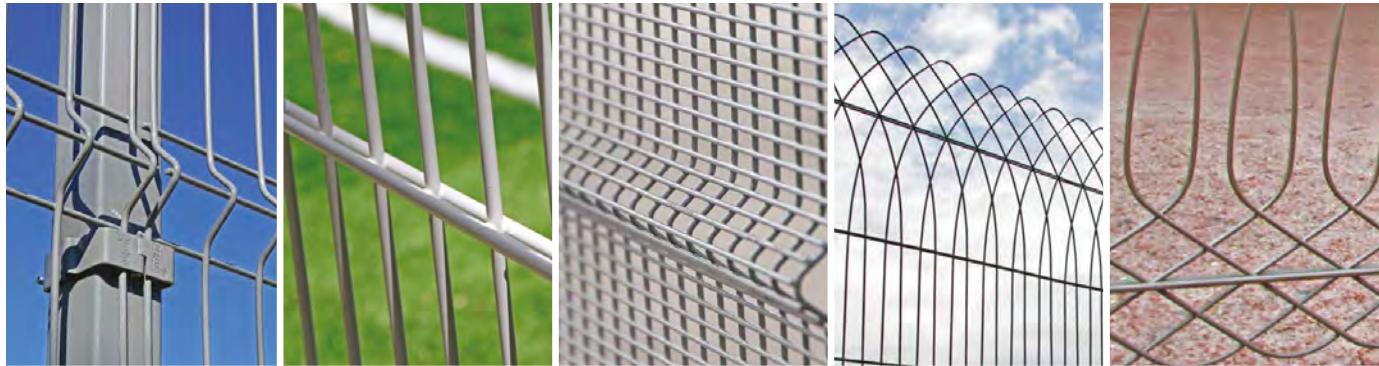
16 CROWD CONTROL

08 CONTEMPO

18 INSTALLATIONS



# System Basics



**Designmaster Fence is an advanced fencing system that combines beauty, functionality, safety, durability and strength.**

## CHARACTERISTICS

The Designmaster Fence system includes panels, posts, gates and all other accessories including hardware and fixtures. Metal components are galvanized, treated with phosphate, and powder coated, providing maximum protection against corrosion.

## STANDARDS

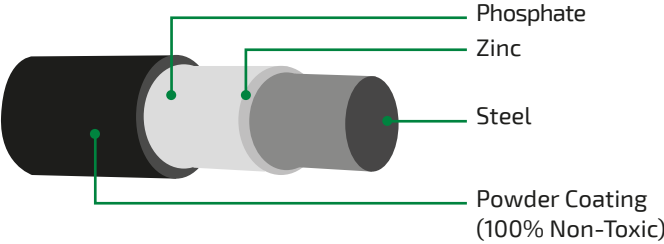
Complies with ASTM-510 and passes the Accelerated UV Weather Test G154-04 and Corrosion resistance of 1,000 hours of exposure. Fabricated in accordance with NF-EN. 10016-2 steel standards.

## NON-TOXIC POWDER COATING

This makes Designmaster Fence the best choice for public areas, schools, daycare centers, zoos, parks, stadiums and anyplace else where people or animals may contact the fence.

## ADVANTAGES

- Aesthetically pleasing and blends in the surroundings.
- Durability, functionality and ease of installation.
- Much more secure than chain link or aluminum.
- 25 Year Warranty on all products and components.
- Miami-Dade certified and qualifies for LEED credits.
- The look of wrought iron without the cost or maintenance.
- Great for Schools, Public Works, Business and Residential.
- Eco-Friendly; recycled and recyclable; 100% Non-Toxic finish.
- A complete fencing package.



# Applications

The chart below will help determine which Designmaster Fence system is best for your project:

APPLICATION	CLASSIC	MILAN	FLORENCE	CONTEMPO	FORTE
Amusement Parks	•••	•••	••	••	•
Shopping Plazas	•••	••	•	•••	•
Corporate Offices	••	•••	•••	••	•
Governmental Offices	••	•	••	•••	•••
Hotels	••	•••	•••	••	•
Industrial Areas	•••	•	•	•••	••
Military Zones	••	•	•	•••	•••
Parking Lots	•••	••	•	•••	••
Parks	•••	••	•••	•	•
Playgrounds	••	•••	••	•••	•
Pools	•••	••	•	•••	•
Prisons	•	•	•	•••	•••
Residential Areas	••	•••	•••	•	•
Commercial Spaces	•••	••	•	•••	•
Schools and Universities	•••	••	••	•••	•
Sports Complexes	•••	•	•	•••	••
Vineyards	•••	•••	••	•	•
Storage and Distribution Centers	••	•	•	•••	•••
Zoos	••	••	•	•••	•••

••• Ideal application      •• Recommended application      • Acceptable application



# CLASSIC

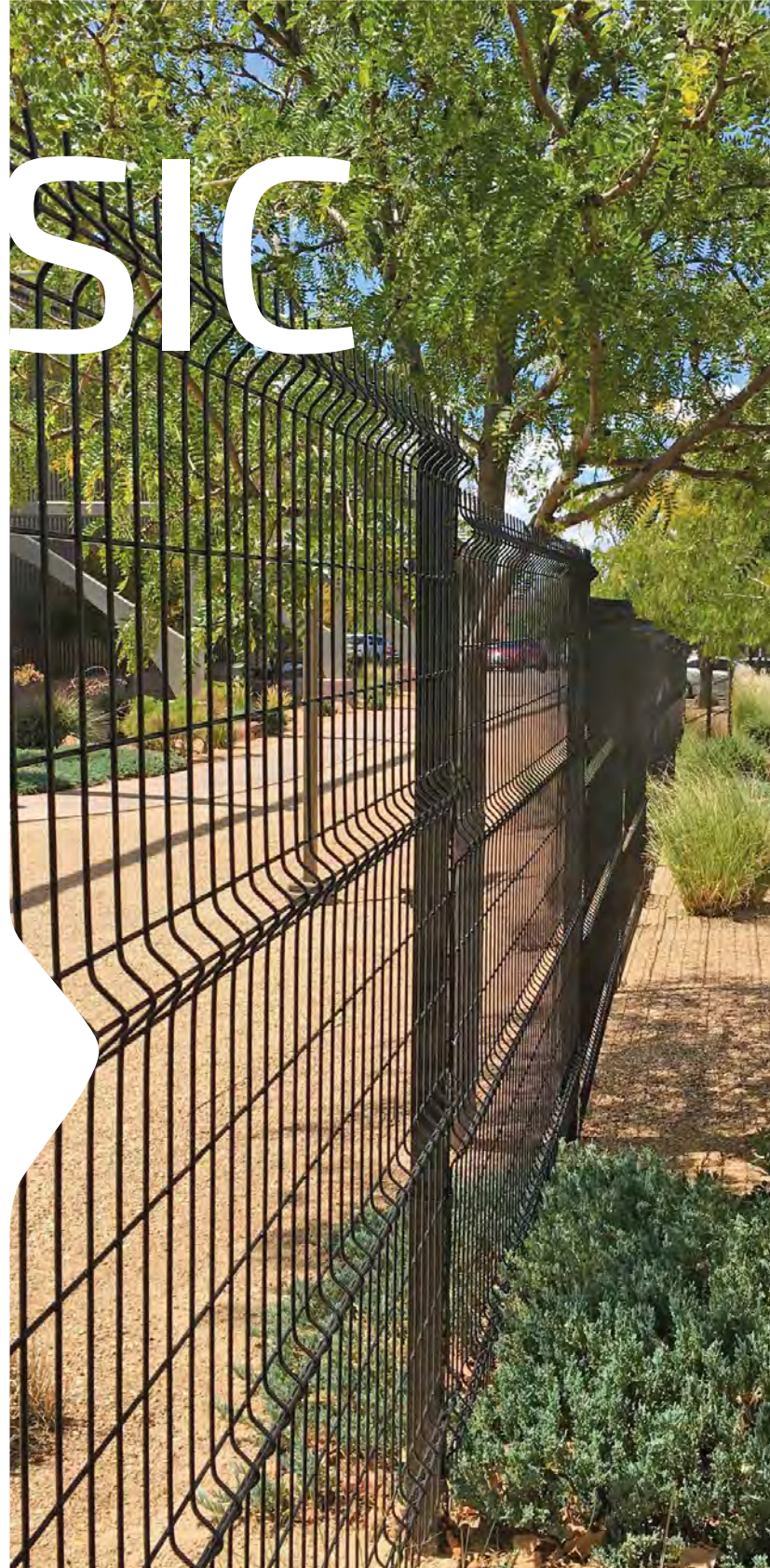
Clearly built for timeless beauty & strength.



**CLEAR** see-through design

**TIMELESS** classic beauty

**STRENGTH** for mid-level security



When beauty factors into perimeter security, Classic's stately elegance is an incomparable choice. Difficult to climb or penetrate, made to last and competitively priced, Classic's v-shaped braces along the length of each steel panel add lateral strength, and its adaptability to elevation and directional changes (120° swing) make this fence ideal for nearly any application.



## SECURITY SOLUTIONS

- Public Works / Public Spaces
- Businesses & Corporations
- Schools & Universities
- Amusement Parks
- Daycare Centers
- Sports Complexes
- Botanical Gardens & Zoos
- Parks, Playgrounds & Pools
- Places of Worship
- Apartment Complexes
- Hotels & Resorts
- Transportation
- Communities
- Residential Property
- Warehouses
- Distribution Facilities

## PANEL

Height	Length	Opening	Steel Bracket	Gauge	Wire Breaking Load	Weld-Shear Strength
in	in	in	#	cal.	psi	lbs
25 3/8	95	2 x 6	2	6	80,000 - 100,000	1,051
48 7/8	95	2 x 6	2	6	80,000 - 100,000	1,051
62 1/16	95	2 x 6	3	6	80,000 - 100,000	1,051
73 5/16	95	2 x 6	4	6	80,000 - 100,000	1,051
97 7/8	95	2 x 6	5	6	80,000 - 100,000	1,051

Posts are available in multiple sizes and lengths. Available with an angled extension. Please consult one of our Distributors for additional details.

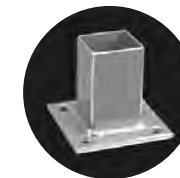
## INSTALLATION COMPONENTS



Standard Bracket



Universal Bracket



Base Mount  
(Not recommended for panels over 5' H)



45° Angled Extension



Post

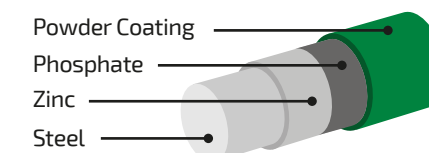


Clamp

## COLORS RAL CODES

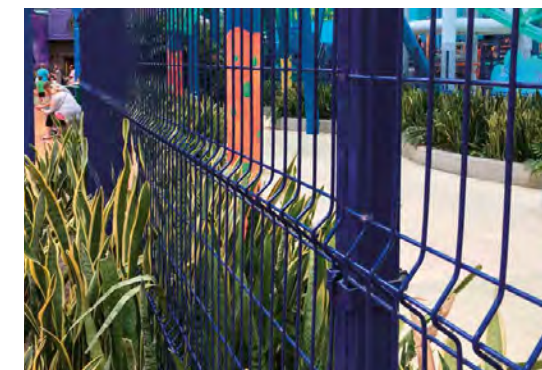


## COMPOSITION



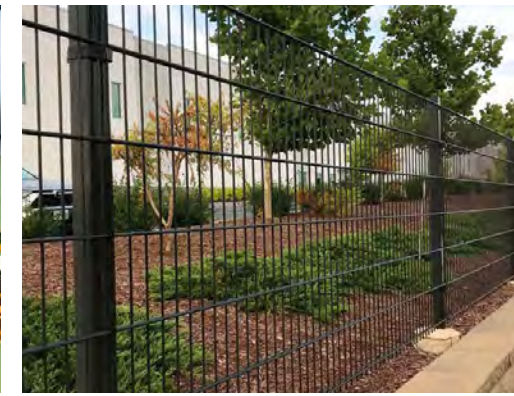
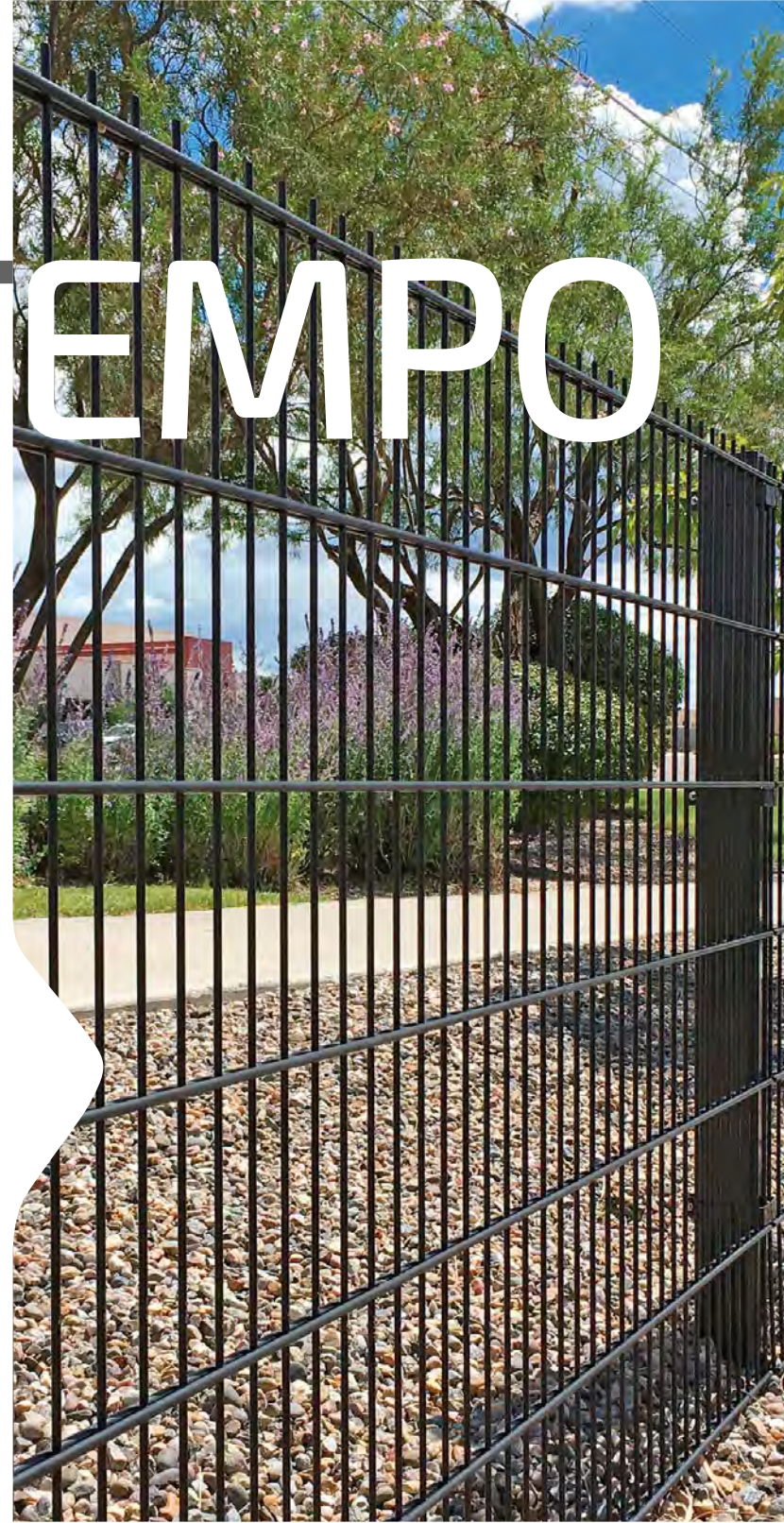
25-year limited warranty on all components | Meets ASTM-510

\*MTO Colors. Certain conditions may apply.



# CONTEMPO

Clearly & simply built strong.



## PANEL

Design	Height	Length	Opening
	in	in	in
Heavy Duty	48 7/16	95 5/8	2 x 8
	72 1/16	95 5/8	2 x 8
	95 5/8	95 5/8	2 x 8
	120 1/16	98 11/16	2 x 8

## VERTICAL WIRE

Design	Breaking Load	Gauge	
		cal.	mm
Heavy Duty	75K - 105K	4	6

## DOUBLE HORIZONTAL WIRE

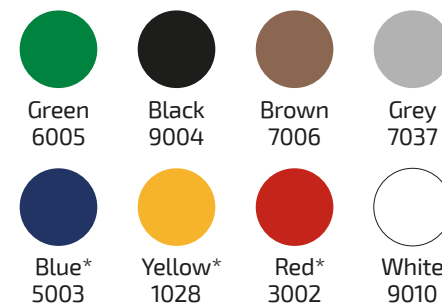
Design	Breaking Load	Gauge	
		cal.	mm
Heavy Duty	75K - 105K	1	8

Posts are available in multiple sizes and lengths. Available with an angled extension. Please consult one of our Distributors for additional details.

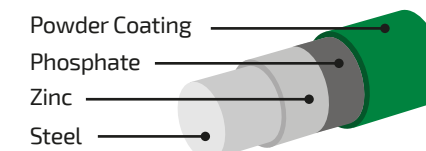
## INSTALLATION COMPONENTS



## COLORS RAL CODES



## COMPOSITION



25-year limited warranty on all components | Meets ASTM-510

\*MTO Colors. Certain conditions may apply.

## SECURITY SOLUTIONS

- Military Bases
- Federal & State Buildings
- Municipal Buildings
- Transportation
- Correctional Facilities
- Schools & Universities
- Daycare Centers
- Places of Worship
- Hotels & Resorts
- Apartment Complexes
- Amusement Parks
- Sports Complexes
- Parks, Playgrounds & Pools
- Public Works
- Warehouses
- Distribution Facilities
- Businesses & Corporations
- Communities



CLEAR see-through security

SIMPLE contemporary design

BUILT STRONG for high-security applications

When security matters, there's Contempo, **designed to meet the toughest security challenges.**

Difficult to climb or penetrate, made to last and competitively priced, Contempo's **4-gauge vertical wires are sandwiched between two 1-gauge horizontal wires, making this fence an exceptional solution for even the highest levels of security, including multi-level and sloped installations.**



# FORTE

Clearly tough & secure.



**CLEAR** see-through security

**TOUGH** virtually impossible to penetrate or climb

**SECURE** enough for the highest levels of protection



Go ahead. Compare Forte with other high-security fencing. You'll find **Forte delivers on every point.**

When you need it strong, virtually impenetrable, made to last and competitively priced, choose Forte's **steel flat or v-braced panels, with optional cross bars and reinforcing brackets for maximum security**, including multi-level and slope installations.



## SECURITY SOLUTIONS

- Critical Infrastructure
- Chemical & Industrial Plants
- Military Bases
- Federal & State Buildings
- Municipal Buildings
- Places of Worship
- Transportation
- Correctional Facilities
- Embassies
- Storage Facilities
- Warehouses
- Distribution Facilities

## PANEL

Design	Height in	Length in	Gauge cal.	Post Height in
With V-Brace	76 3/4	99 3/16	8	106 5/16
	96 7/8	99 3/16	8	126
Flat	79 3/16	99 3/16	8	106 5/6
	99 1/16	99 3/16	8	126
	118 11/16	99 3/16	8	146
	142 1/4	99 3/16	8	170

Wire Breaking Load psi	Opening	
	in	cm
70,000 - 90,000	1/2 X 3	7.62 x 1.27

**Note:** Forte Flat Panels are extremely strong, anti-climb and anti-cut. However, due to the nature of the Forte Flat Panel and the fact they do not have any built-in lateral support to prevent the Panel from bowing or flexing, it is recommended to install horizontal cross bars between the vertical posts of each panel. Two cross bars per panel are the minimum required, however three cross bars are recommended (top, middle, bottom). The panel should be secured to the crossbars using a minimum of three equally spaced Universal Brackets and self-taping screws. Please see your Distributor for additional details.

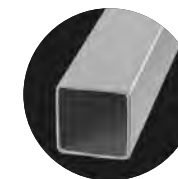
## INSTALLATION COMPONENTS



Universal Bracket



Clamp



Post



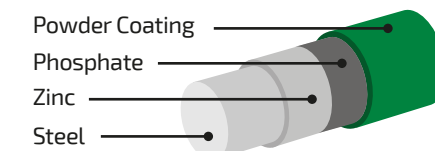
45° Angled Extension



## COLORS RAL CODES

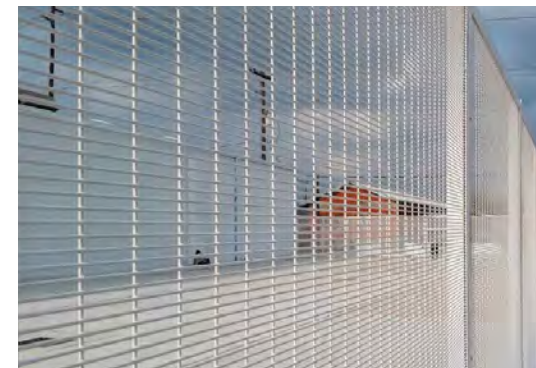


## COMPOSITION



25-year limited warranty on all components | Meets ASTM-510

\*MTO Colors. Certain conditions may apply.



# FLORENCE

Clearly designed for elegant perimeters



**CLEAR** see-through design

**ELEGANT** lines  
no pinch-points

**PERIMETERS** that make a statement



Sometimes, aesthetics are as important, or more so, than security. And for that, there's Florence's **graceful, arching steel panels, adding elegant security** to all it surrounds.

Difficult to climb, made to last and competitively priced, Florence sets the **standard for beautiful, secure fencing solutions.**



## SECURITY SOLUTIONS

- Amusement Parks
- Botanical Gardens & Zoos
- Parks & Playgrounds
- Schools & Universities
- Public Spaces
- Hotels & Resorts
- Businesses & Corporations
- Apartment Complexes
- Communities
- Residential Property

## PANEL

Height		Length		Gauge	
in	in	cal.	mm		
31 1/2	96 1/16	4	6		
47 1/4	96 1/16	4	6		

Wire Breaking Load	Wire Tension Strength
psi	lbs (min)
55,000 - 70,000	2500

Posts are available in multiple sizes and lengths. Please consult one of our Distributors for additional details.

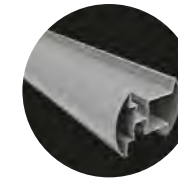
## INSTALLATION COMPONENTS



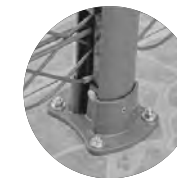
Round Lock Clamp



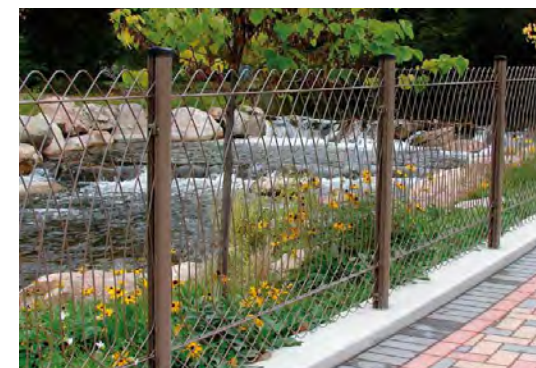
Single Clamp



Extruded Aluminum Posts



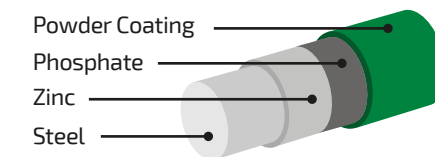
Base Mount



## COLORS RAL CODES



## COMPOSITION



25-year limited warranty on all components | Meets ASTM-510

\*MTO Colors. Certain conditions may apply.



# MILAN

Clearly a beautiful perimeter solution



**CLEAR** see-through design

**BEAUTIFUL & SLEEK**  
no pinch-points

**PERIMETER-PERFECT**  
aesthetics & security



For solutions that demand equal parts beauty and security, choose Milan's **steel panels, topped with horizontally-reinforced sleek arches.**

Almost impossible to climb, made to last and competitively priced, Milan is **the perfectly beautiful choice for medium-security projects.**



## SECURITY SOLUTIONS

- Amusement Parks
- Botanical Gardens & Zoos
- Parks & Playgrounds
- Schools & Universities
- Parking Garages
- Public Spaces
- Hotels & Resorts
- Businesses & Corporations
- Apartment Complexes
- Residential Property

## PANEL

Height		Length		Gauge	
in	in	cal.	mm		
62 15/16	87 3/8	4	6		
81 7/8	87 3/8	4	6		

Wire Breaking Load		Wire Tension Strength	
psi		lbs (min)	
55,000 - 70,000		2500	

Posts are available in multiple sizes and lengths. Please consult one of our Distributors for additional details.

## INSTALLATION COMPONENTS



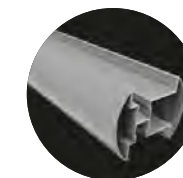
Round Lock Clamp



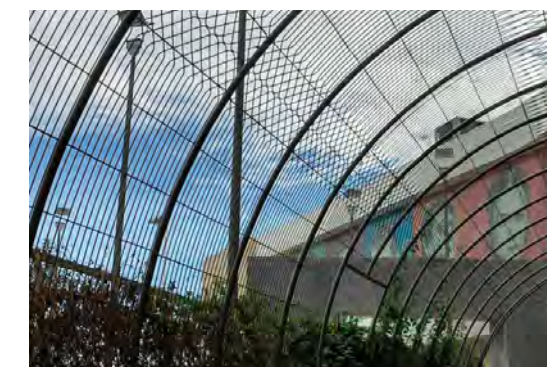
Square Lock Clamp



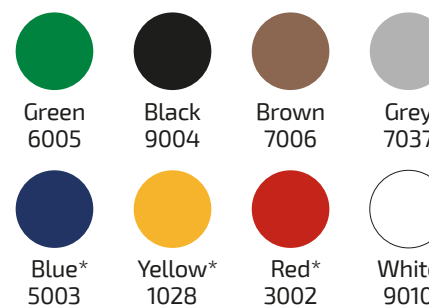
Single Clamp



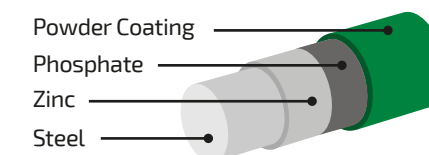
Extruded Aluminum Posts



## COLORS RAL CODES

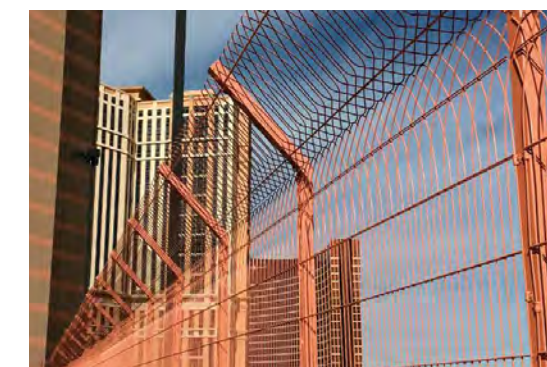


## COMPOSITION



25-year limited warranty on all components | Meets ASTM-510

\*MTO Colors. Certain conditions may apply.





# CROWD CONTROL

Clearly a simple, effective barrier



**CLEAR**, see-through design

**SIMPLE**, modular assembly

**EFFECTIVE SECURITY** with exceptional stability



Address any crowd-security challenge, no matter how large or small, with confidence.

Our crowd-control panels are easy to transport, simple to assemble and are designed to stay in place, regardless of the surface. Plus, the interlocking, tubular steel frames and panels nest well for compact storage.



## SECURITY SOLUTIONS

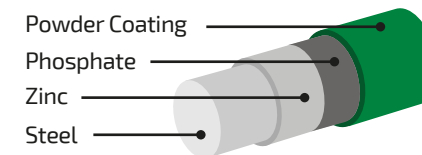
- Concerts
- Parades
- Events
- Construction Sites

## SPECIFICATIONS

Height	Length	Opening	Weight	Gauge	
in	in	in	lbs	cal.	mm
48	79	2 x 8	35	6	4.89

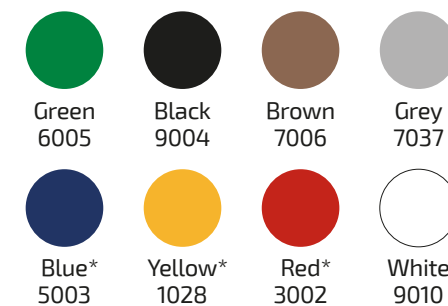
Horizontal Lines	Vertical Lines	Pipe Diameter
per panel	per panel	in
6	37	1.5

## COMPOSITION

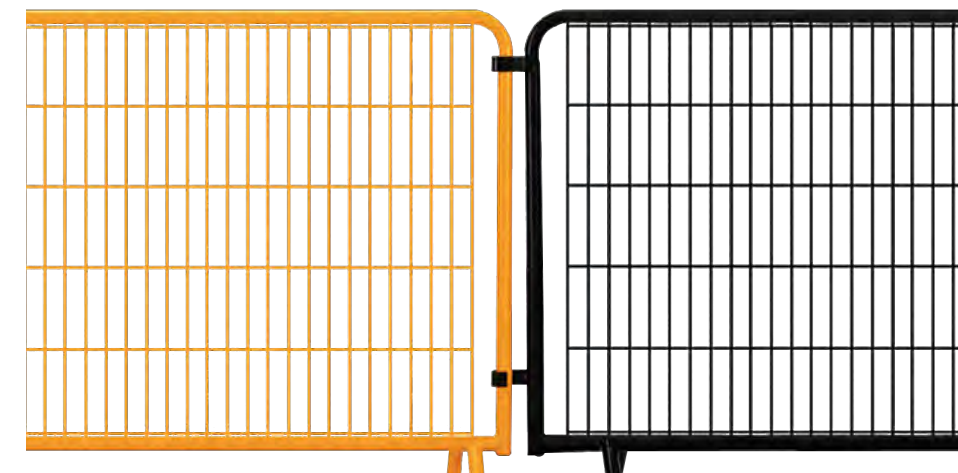


25-year limited warranty on all components | Meets ASTM-510

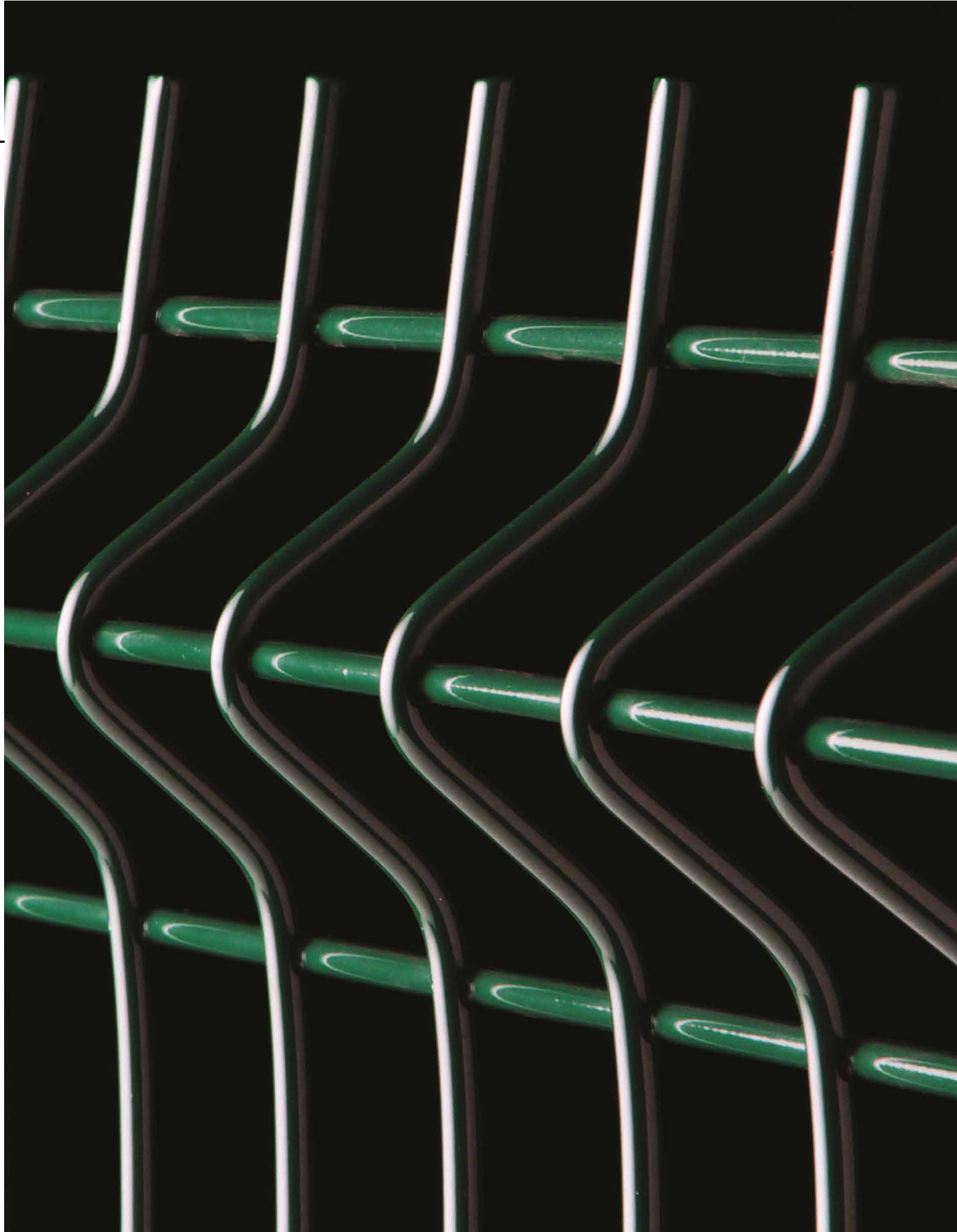
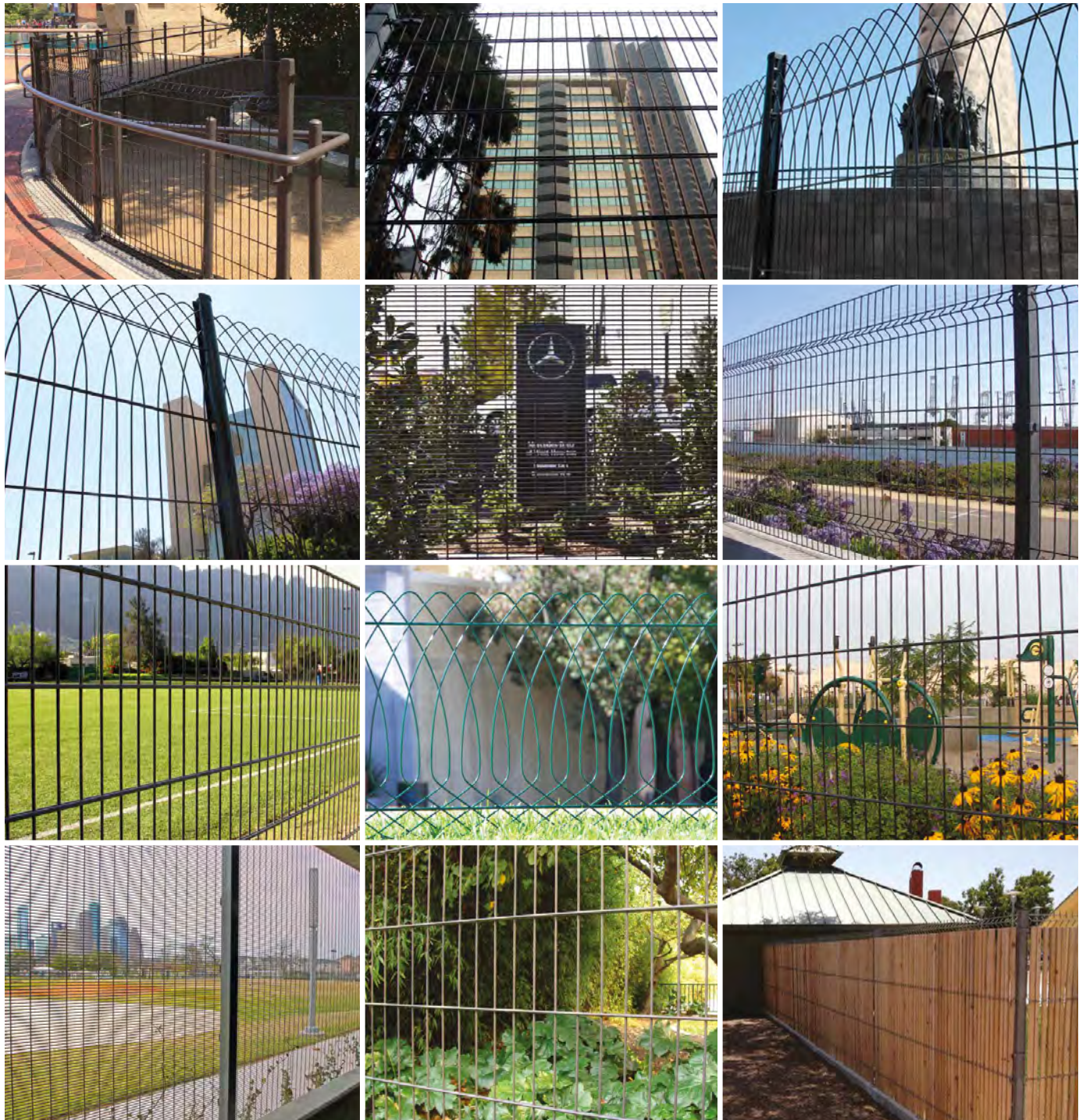
## COLORS RAL CODES



\*MTO Colors. Certain conditions may apply.



# Installations





---

VISIT OUR SOCIAL MEDIA CHANNELS



[designmasterfence.com](http://designmasterfence.com)

---

