



# ALLEGHENY MOUNTAIN

HARDWOOD FLOORING



# Direct from Our Forest to Your Floor

4TH GENERATION FAMILY OWNED & OPERATED

724.867.9441 • 501 Main St. Emlenton, PA 16373 • [www.hickmanwoods.com](http://www.hickmanwoods.com) • @hickmanwoods

WE HARVEST AND REGROW  
TREES SO THAT WE WILL BE  
USING THE SAME FORESTS IN  
100 YEARS AS WE ARE TODAY



*“Society grows great when old men plant trees  
whose shade they shall never sit in.” – Greek Proverb*

# Benefits Of Northern Appalachian Wood

THE WORLD'S FINEST HARDWOOD LUMBER

Our northern Appalachian forests are characterized by slow growing seasons, which result in tree species with tight graining and strong fibers. The consistent grain patterns yield beautiful heartwood, and also offers a more stable cut of wood.

*real wood*  
Real Life



Allegheny Mountain & Hickman Lumber have been committed to responsible forestry since founding the company in 1938. In 1999 we were the first company in PA to become FSC Certified through the Rainforest Alliance and now proudly offer 100% FSC Certified Flooring proving that our forests are sustainable, and we are growing more trees than we harvest.

COMPLETE CONTROL FROM THE FOREST, THROUGH THE SAWMILL, DRY KILNS AND FLOORING PLANT ALLOWS ALLEGHENY MOUNTAIN TO CONSISTENTLY OFFER HIGH QUALITY, BEAUTIFUL FLOORING.

# Custom Lumber Drying & Precision Milling

---

Allegheny Mountain hardwood Flooring trusts its parent company, Hickman Lumber, to ensure the highest quality dried lumber for its flooring. The various cuts of lumber dry at different rates. **Therefore, we always dry Rift & Quarter Sawn separate from Live Sawn and separate from Plain Sawn.** Because we are a sawmill and have complete control throughout the whole process, we maintain this detail and care. Not all mills do so.

Drying lumber is part art & science – it requires constant testing and patience and time. Lumber is air dried before going into the dry kilns to reach the optimal drying moisture content. Lumber can take up to two months additional drying in the kilns with daily monitoring to create the lumber needed to mill our wide plank and long length flooring.

After drying, we take care to keep lumber in environmentally stable conditions throughout its time at the flooring plant. The lumber is checked multiple times throughout the precision milling process of creating the floor.

This attention to detail is incredibly important as Allegheny Mountain flooring is installed across the country from the humid ocean front homes to the arid mountains. Allegheny Mountain guarantees that when our flooring is shipped it is top quality. This saves installers time and money with ease of installation and comfort for years following knowing you'll have satisfied homeowners when installed and maintained properly.



# Cuts & Grades

We take great pride in offering the highest grade on the market. Our cut & clear grade specs exceed NWFA standards.

## CLEAR GRADE

This is our cleanest, most perfect grade. A mostly heartwood flooring product that allows the subtle natural heartwood color variations. Very minimal to no character marks and sorted for uniform color.



## SELECT GRADE

A grade slightly below clear grade. Contains all the variations in coloration produced by the contrasting differences of heartwood and sapwood. Minimal character marks such as small knots, worm holes and mineral streaks.



## NATURAL GRADE

Characterized by color variation due to contrast in heartwood and sapwood along with natural variations including sound knots, open checks, worm holes, mineral streaks. #2 Common and better with a #1 common average. A tasteful floor displaying the natural beauty.



## MILLRUN GRADE

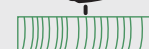
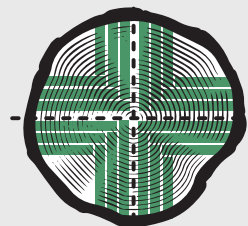
Similar to the characteristics in the Natural Grade. Millrun grade flooring products are not often offered in a sorted grade like clear or select; it is only offered in millrun so all the characteristics from Clear to Natural will be included. Millrun is offered in live sawn oaks and hickory.



## PLAIN SAWN

Commodity Cut. Annular growth rings are 30 degrees or less the face of the board.

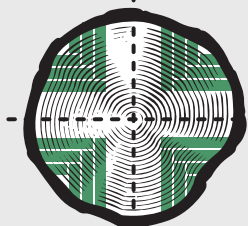
**VISUAL:** cathedral pattern on face of board



## QUARTER SAWN

Log cut into quarters. Defined when annular growth ring intersects the face of board at 60 to 90 degree angle.

**VISUAL:** straight grain with fleck



## RIFT SAWN

Log cut into quarters. Annular growth rings intersect face of board at 30-60 degrees. Difficult to get wide plank.

**VISUAL:** straight grain – no fleck



## LIVE SAWN

Log cut straight through. Similar to French Oak Cut. Mix of cathedral grain, Rift & Quartered

**VISUAL:** great mix of all grain, knots, & character of tree



The advantages for Rift & Quarter flooring lies in the dimensional stability over Plain Sawn. **Wood expands and contracts depending on the direction of the annual growth rings**, with the R&Q growth rings perpendicular to the face of the board this solves the problem of cupping and gapping in the floor. Live Sawn has a high percentage of R&Q which makes it more dimensionally stable than Plain Sawn. This stability allows you to install solid, wide plank flooring. R&Q is the recommended solid flooring to be installed over radiant heat.

# White Oak

RIFT & QUARTER SAWN





Clear Grade R&Q White Oak

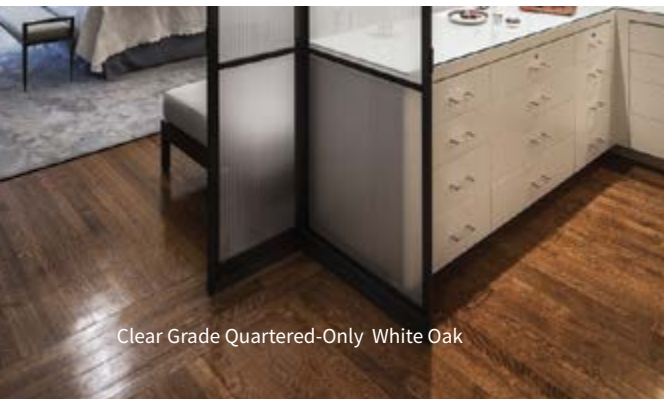


# White Oak

RIFT & QUARTER SAWN

Allegheny Mountain Hardwood Flooring has built its reputation on high quality Rift & Quarter Sawn White Oak. It's a timeless look that fits in very traditional homes, as it was popular in the early 1900s, but due to the straight grain it is also a great fit in very modern homes.

Our Northern Appalachian sourced material can create a very uniform color in the clear grade. We can offer **100% Rift-Only** or **100% Quartered-Only**.



Clear Grade Quartered-Only White Oak



Clear Grade Rift-Only White Oak

## SPECIFICATIONS:

3/4" solid, 3/4" or 5/8" Engineered

Lengths: Nested Bundles (NB) 1'-7' avg. 42" &

Long Lengths (LL) 7'-12' Widths 2 1/4" - 10"

Tongue & Groove, End Matched, milling matches so you can mix NB & LL.

Grades: Clear, Select, Natural

Janka Scale of Hardness: 1360

Grain: R&Q, Rift Only, Quartered Only.

Square edge with option of micro bevel for pre-finish.

NOFMA (the rulebook) only requires 75% of a board with Rift characteristics to be considered Rift & only 50% quartered figure per board to be considered Quartered. Allegheny's grades go beyond the industry standards offering 100% Rift or 100% Quartered to ensure that your floor consistently meets your expectations.

# White Oak

THE ORIGINAL ALLEGHENY  
LIVE SAWN



Millrun Grade Live Sawn White Oak *with circle sawn & hand-crafted edges*





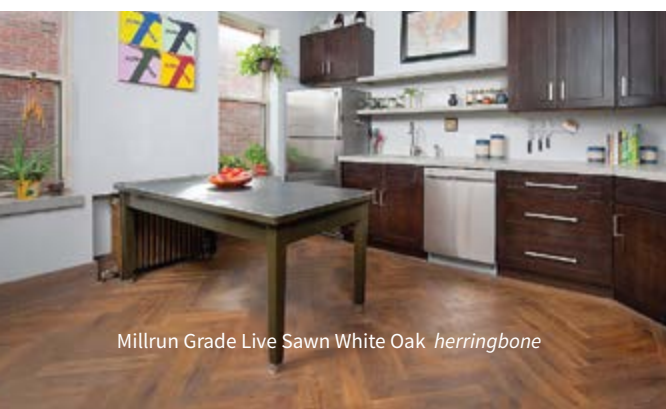
# White Oak

THE ORIGINAL ALLEGHENY  
LIVE SAWN

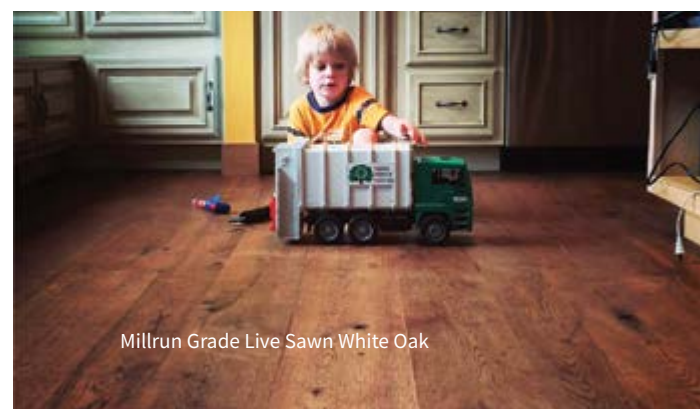
Millrun Grade Live Sawn White Oak

Allegheny Live Sawn is a result of cutting small logs straight through the diameter to produce boards with a mix of Plain Sawn and Rift & Quarter Sawn grain. This allows us to confidently create wide planks with stability due to the high percentage of Rift & Quarter Sawn.

Live Sawn has become very popular in a variety of home styles. We've also seen many herringbone & parquet floors created using this beautiful flooring option. The wider the plank, the more these distinct Live Sawn characteristics are displayed.



Millrun Grade Live Sawn White Oak *herringbone*



Millrun Grade Live Sawn White Oak

## SPECIFICATIONS:

3/4" solid, 3/4" or 5/8" Engineered  
Lengths: Nested Bundles (NB) 1'-7' avg. 42" &  
Long Lengths (LL) 7'-12' Widths 3" - 12"  
Tongue & Groove, End Matched, milling matches so you can mix NB & LL.

Grades: Millrun  
Janka Scale of Hardness: 1360  
Grain: Mix of Center Cut, Plain Sawn, and R&Q  
Square edge with option of micro bevel for pre-finish.

# Red Oak

RIFT & QUARTER SAWN



Natural Grade R&Q Red Oak



# Red Oak

RIFT & QUARTER SAWN

Red Oak is the classic American floor. Most homes across the country already have Plain Sawn Red Oak throughout the home.

The Rift & Quarter Sawn cut creates a more modern look than the classic Plain Sawn.

Red Oak Natural Grade displays beautiful color variety from light pink to dark red and brown tones.

Natural Grade R&Q Red Oak



Clear Grade Rift-Only Red Oak



Natural Grade R&Q Red Oak

## SPECIFICATIONS:

- 3/4" solid, 3/4" or 5/8" Engineered
- Lengths: Nested Bundles (NB) 1'-7' avg. 42" & Long Lengths (LL) 7'-12' Widths 2 1/4" - 10"
- Tongue & Groove, End Matched, milling matches so you can mix LL & NB.

- Grades: Clear, Select, Natural
- Janka Scale of Hardness: 1290
- Grain: R&Q, Rift Only, Quartered Only
- Square edge with option of micro bevel for pre-finish.



### WHITE OAK

vs.

### RED OAK:



- more uniform color
- more sound knots
- higher percentage of Quartered grain

- more color variation
- more mineral streaks
- higher percentage of Rift grain

# Red Oak

THE ORIGINAL ALLEGHENY  
LIVE SAWN





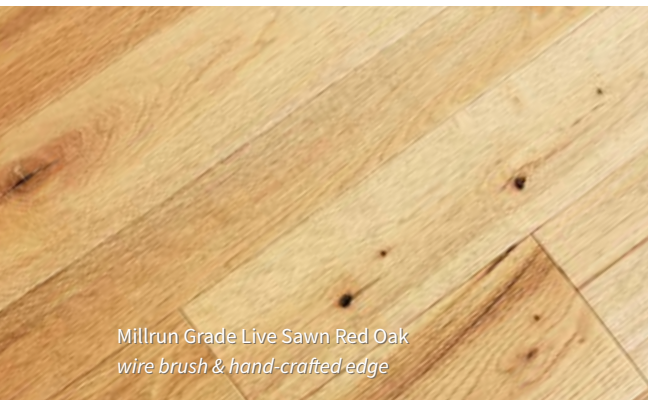
# Red Oak

THE ORIGINAL ALLEGHENY  
LIVE SAWN

Red Oak Live Sawn has been growing in popularity due to the dynamic color variation with the boards. The various subspecies of red oak we have growing locally create this diversity. This look is a great option for someone wanting a reclaimed looking floor.

Red Oak is an economical option for a very high-quality floor at a great price.

Millrun Grade Live Sawn Red Oak



Millrun Grade Live Sawn Red Oak  
*wire brush & hand-crafted edge*



Millrun Grade Live Sawn Red Oak

## SPECIFICATIONS:

3/4" solid, 3/4" or 5/8" Engineered

Lengths: Nested Bundles (NB) 1'-7' avg. 42" &

Long Lengths (LL) 7'-12' Widths 3" - 12"

Tongue & Groove, End Matched, milling matches so you can mix LL & NB.

Grade: Millrun

Janka Scale of Hardness: 1360

Grain: Mix of Center Cut, Plain Sawn, and R&Q

Square edge with option of micro bevel for pre-finish.



Natural Grade Plain Sawn Walnut *hand scraped*



# Walnut

PLAIN SAWN

Walnut's dark color is an all-time favorite wood. Ours is unique in that it is unstreamed in the dry kilns to preserve the natural beauty, color, and crisp grain. Primarily offered in our Natural grade.

## SPECIFICATIONS:

3/4" solid, 3/4" or 5/8" Engineered

Lengths: Nested Bundles (NB) 1'-7' &

Long Lengths (LL) 7'-12' Widths 2 1/4" - 12"

Tongue & Groove, End Matched, milling matches so you can mix LL & NB.

Grade: Clear, Natural

Janka Scale of Hardness: 1010

Grain: Plain Sawn

Square edge with option of micro bevel for pre-finish.



Millrun Grade Plain Sawn Hickory



# Hickory

PLAIN SAWN

Hickory's beauty is in the variation. It boasts dramatic color variations with the heartwood & sapwood and is full of natural knots and characteristics. While it's the hardest domestic species, it is not a very stable species, so we don't recommend wide plank hickory.

## SPECIFICATIONS:

3/4" solid, 3/4" or 5/8" Engineered

Lengths: Nested Bundles (NB) 1'-7' &

Long Lengths (LL) 7'-12' Widths 2 1/4" - 5"

Tongue & Groove, End Matched, milling matches so you can mix LL & NB.

Grade: Millrun

Janka Scale of Hardness: 1820

Grain: Plain Sawn, Rift & Quarter Sawn

Square edge with option of micro bevel for pre-finish.



Clear Grade R&Q Beech



# Beech

## RIFT & QUARTER SAWN

Rift & Quarter sawn Beech is a one of a kind product offered by Allegheny Mountain. Subtle grain and beautiful color variations create a warm and inviting feel to your home. Beech takes stain well and looks great with a dark finish. Rift & Quarter sawn allows for extra stability of the beech, however we don't offer it in widths wider than 5".

### SPECIFICATIONS:

3/4" solid, 3/4" or 5/8" Engineered

Tongue & Groove, End Matched, milling matches so you can mix LL & NB.

Square edge with option of micro bevel for pre-finish.

Grade: Clear, Natural

Janka Scale of Hardness: 1300

Grain: R&Q, Rift Only, Quartered Only.

Lengths: Nested Bundles (NB) 1'-7' &

Long Lengths (LL) 7'-12' Widths 2 1/4" - 5"



Natural Grade Plain Sawn Cherry



# Cherry

## PLAIN SAWN

Pennsylvania Cherry is known throughout the world for its beautiful color and grain. It is a very stable species and wide plank Plain sawn is no problem. Sharp color contrast with the red heartwood and creamy white sapwood.

### SPECIFICATIONS:

3/4" solid, 3/4" or 5/8" Engineered

Lengths: Nested Bundles (NB) 1'-7' &

Long Lengths (LL) 7'-12' Widths 2 1/4" - 10"

Tongue & Groove, End Matched, milling matches so you can mix LL & NB.

Grade: Clear, Natural

Janka Scale of Hardness: 950

Grain: Plain Sawn, Rift & Quarter Sawn

Square edge with option of micro bevel for pre-finish.



# Engineered vs. Solid Hardwood

We offer both solid & engineered flooring. Our specialty cuts, Rift & Quarter Sawn & Live Sawn allow for the added stability in a solid floor, but there are times when an engineered is a better option. Our engineered is unfinished with 4mm or 6mm wear layer that can be sanded and refinished like a solid. We recommend engineered for below grade installations. Our solid & engineered can both be glued to concrete thanks to improvements in adhesives.

ENGINEERED	vs.	SOLID
<b>THICKNESS</b>		
3/4" or 5/8"		3/4"
<b>WEAR LAYER</b>		
4mm or 6mm		7mm
<b>CONSTRUCTION</b>		
11 layers (3/4") or 9 layers (5/8") baltic birch plywood		Solid Wood
<b>LENGTHS</b>		
2'-10' or 2'-12'		Nested Bundles 1'-7' avg. 42" Long Length 7'-12'
<b>WIDTHS</b>		
4" - 12"		2 1/4" - 12"



# Site Finish vs. Prefinish

---

We strongly believe a site finished floor is far superior than a prefinish. The craftsmanship, customization, return on investment, and overall beauty in a site finish is far superior than a prefinish. However, we understand in certain situations that a prefinish floor is necessary and can provide custom prefinish options. Contact us for details on prefinish.

## BENEFITS OF SITE FINISHED

**Custom Color** : Can be determined on site, since the color often looks different based on lighting and other colors within the room.

**Full Seal & Flat Floor** : Prefinished will have micro bevel and gaps between each board.

**Return on Investment** : You can refinish a site finished floor. If there is damage after 15 years, it can be fixed without completely replacing the floor. Prefinished colors are often discontinued, and many prefinished floors do not have a wear layer thick enough to refinish the floor. Your only option for repair would be to completely replace the floor.

**Stair Match** : You can match your floor with your stairs. It can be difficult to match site finish stairs with prefinish flooring.

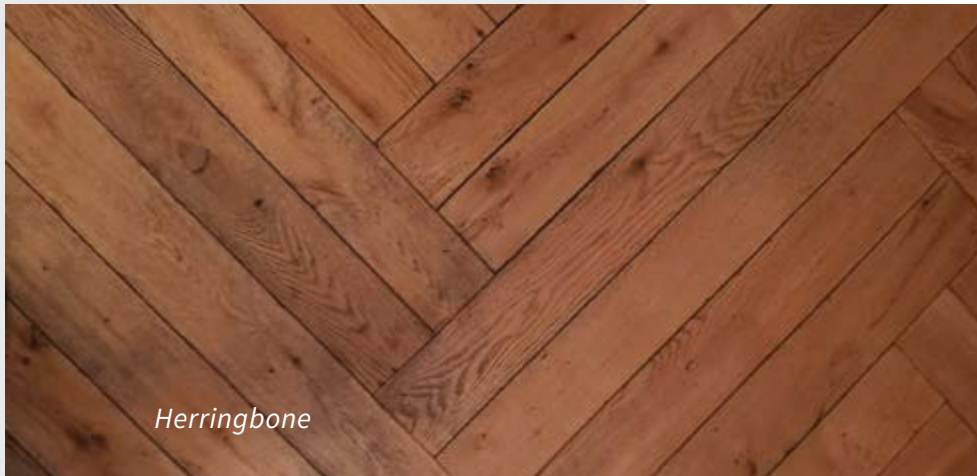
**Price** : A site finished floor is usually less expensive for comparative final quality. There are inexpensive prefinished floors, but to find a quality prefinished floor, it will likely be more expensive than a site finish floor.

**Customization** : Site finish floors offer options in herringbone, borders, chevron, and other custom designs that are not available as a prefinish.



# Parquet & Custom Surface Characteristics

---



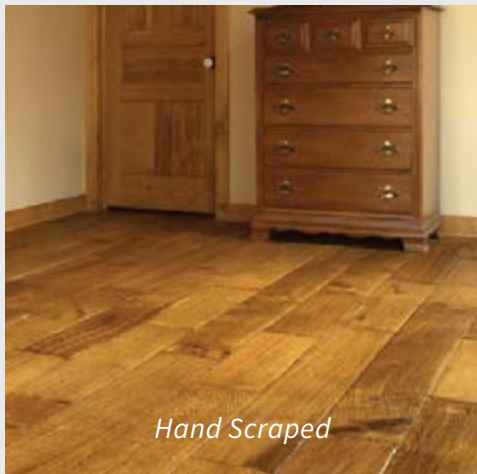
*Herringbone*



*Chevron*



*Basket Weave*



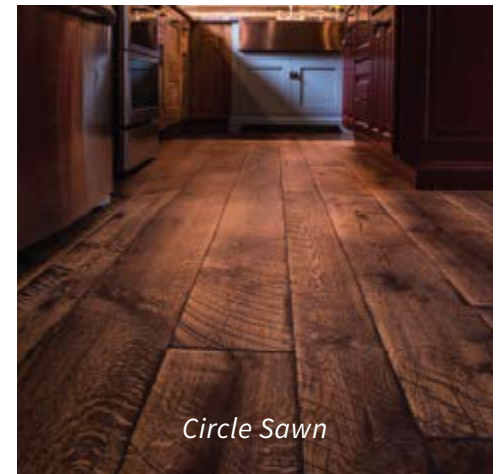
*Hand Scraped*



*Hand Crafted Edges*



*Wire Brush*



*Circle Sawn*

# The Best Installers in the World Use Our Flooring.

---

“As a developer and architect, I get to see many floors and the Allegheny Mountain product has the high-end quality and appearance to be installed anywhere. Our development company used Allegheny Mountain’s 4” natural grade R&Q white oak on a recent renovation and I couldn’t be happier with the product. Everyone that came into the house commented on the beauty of the wood flooring. The wood is very stable and precisely cut, but my favorite part of the product other than the rich appearance is how easy it was to install and how little waste we had due to the milling. We sold the renovated house for the highest cost per-square-foot in the area, in just two weeks, and I’m sure we got that high number because of the hardwood floors that we installed.”

— *Bob Baumbach*

Pittsburgh Architect & Developer

“We have proudly partnered with AMHF for many years. It’s a pleasure doing business with the Hickman family while receiving first class service. Allegheny’s products speak consistency, quality and stability. We truly value our Allegheny partnership and look forward to many more successful years together.”

— *John Lessick*

President Apex Wood Floors,  
Past Chairman of the NWFA



**WINNER OF MULTIPLE NWFA’S FLOOR OF THE YEAR AWARDS**



# ALLEGHENY MOUNTAIN

HARDWOOD FLOORING

[www.hickmanwoods.com](http://www.hickmanwoods.com) | [@hickmanwoods](https://twitter.com/hickmanwoods)  
724.867.9441 | 501 Main St. Emlenton, PA 16373

*real wood*  
Real Life

