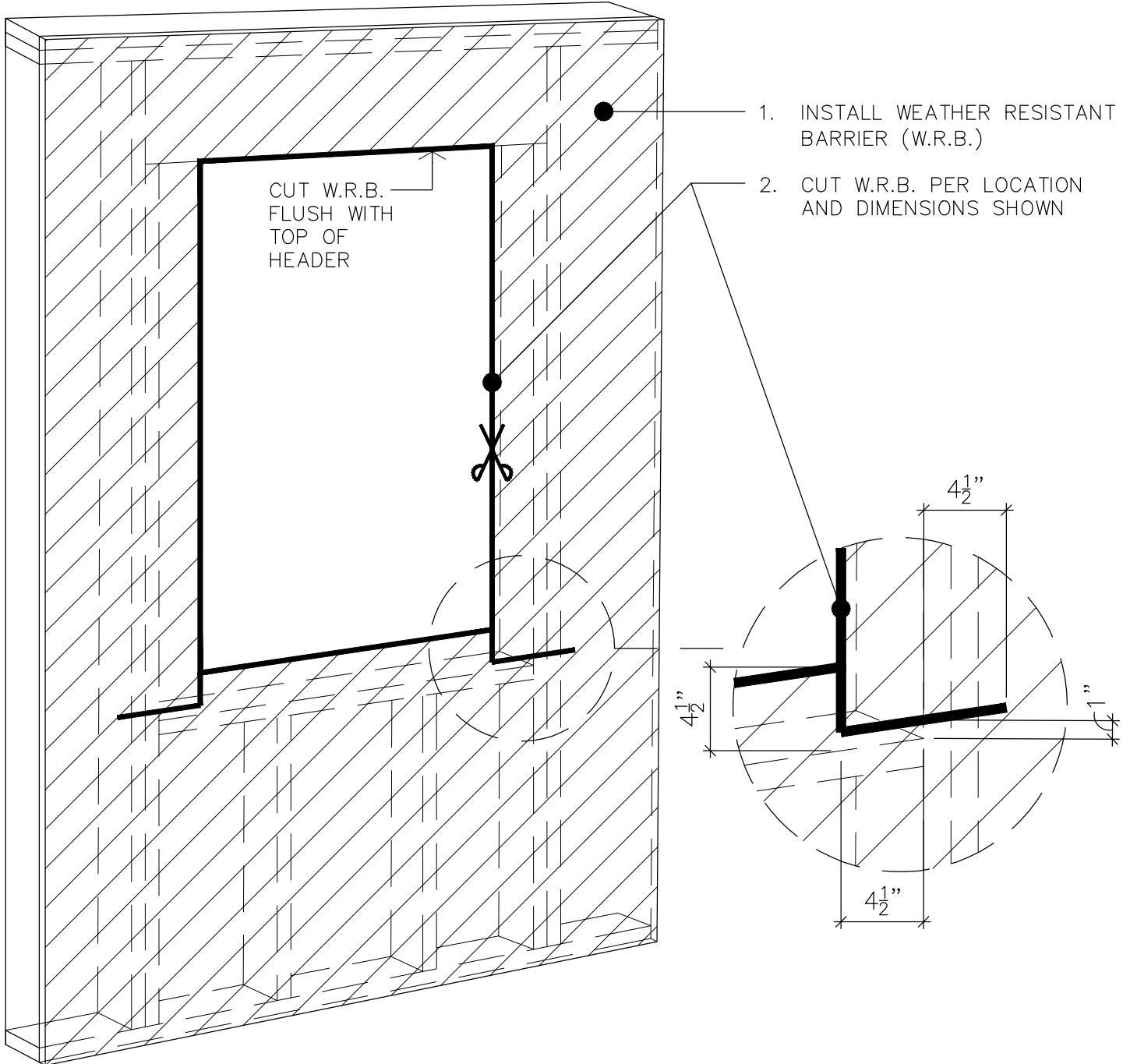




SillDry®

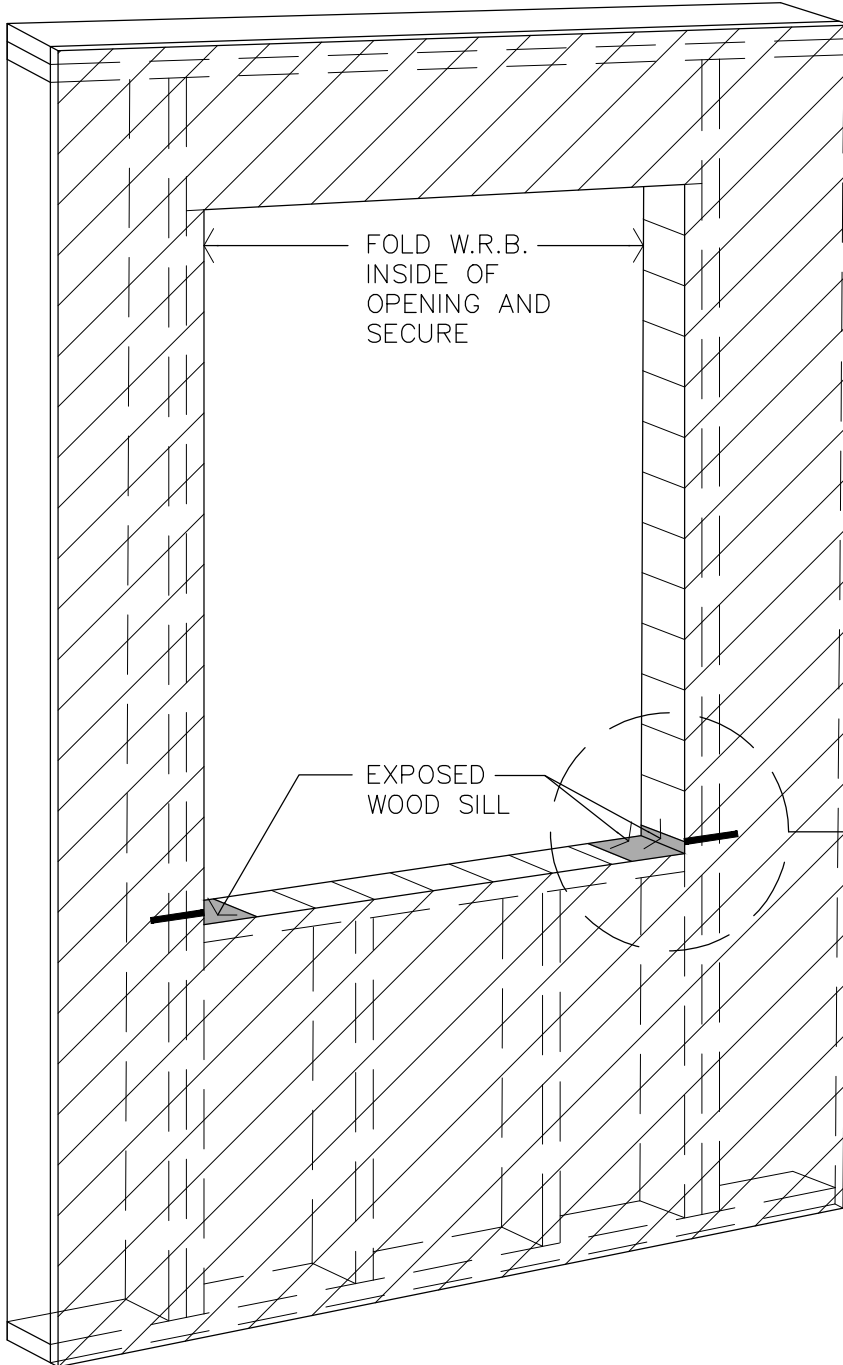
INSTALLATION INSTRUCTIONS - STEP 1





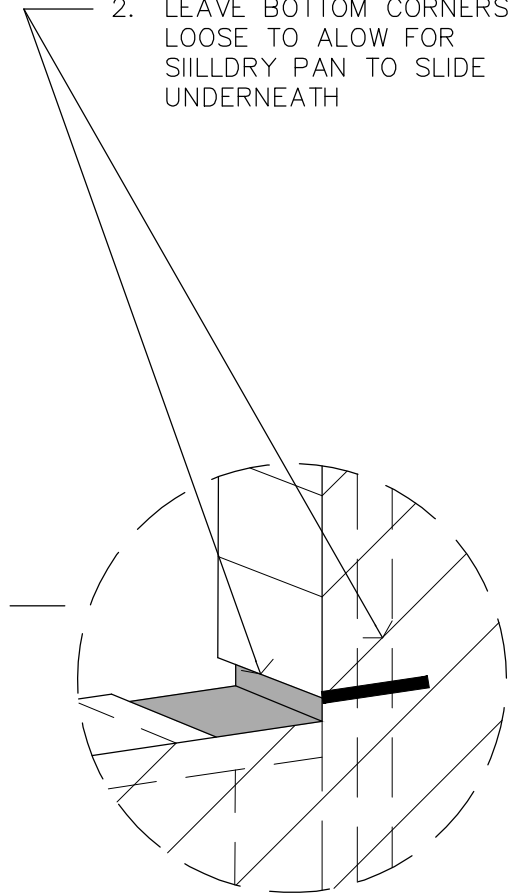
SILLDRY®

INSTALLATION INSTRUCTIONS - STEP 2



1. FOLD W.R.B. INSIDE AT SIDES AND SILL AND SECURE

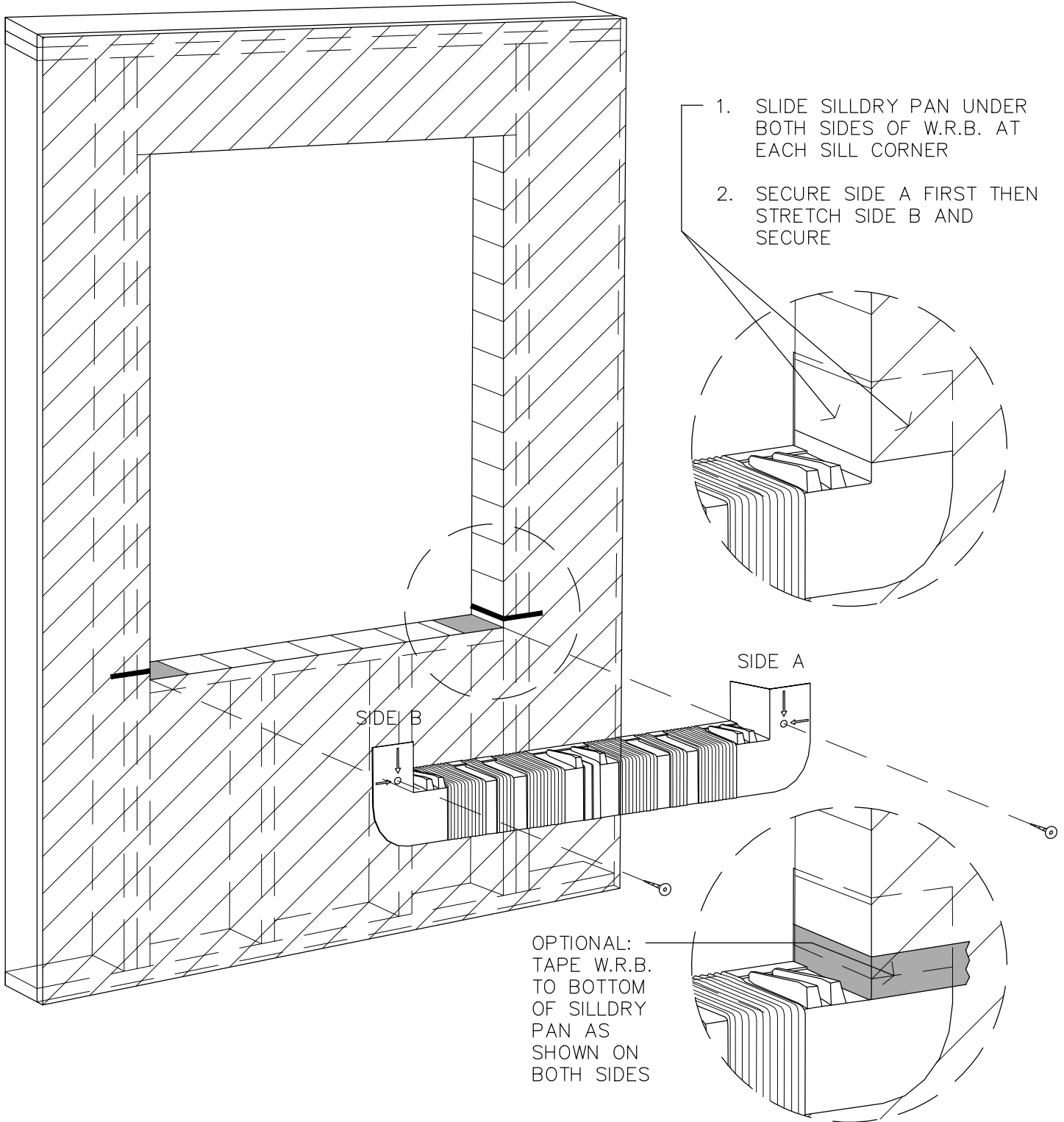
2. LEAVE BOTTOM CORNERS LOOSE TO ALLOW FOR SILLDRY PAN TO SLIDE UNDERNEATH





SillDry®

INSTALLATION INSTRUCTIONS - STEP 3





SillDry

INSTALLATION INSTRUCTIONS - STEP 4

1. APPLY A CONTINUOUS BEAD OF HIGH GRADE SILICONE AROUND TOP AND 2 LEGS OF WINDOW FLANGE
2. INSTALL WINDOW PER MANUFACTURE'S INSTALLATION SPECIFICATIONS (NEVER SECURE THROUGH ACCORDION SECTIONS)

