

# Make A Lasting Impression

## ... with Everlast Trim



Everlast offers two trim collections – Premium Everlast Color-Matched Trim which is available in a wide variety of rich colors and white cellular PVC trim\* which cuts and installs just like wood.



### Features & Benefits

- Low Maintenance  
Requires virtually no upkeep saving you time and money on maintenance
- Long Lasting  
Resists water, warp, swell, or rot
- Durable and Strong  
Superior high wind and impact resistance
- Environmentally Safe  
Fully recyclable materials that never require painting and caulking



## EVERLAST®

*Advanced Composite Siding*

[www.EverlastSiding.com](http://www.EverlastSiding.com)



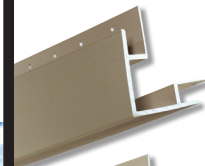
\*Optional custom painting can add a decorative touch. Oil or latex paint made for vinyl is recommended.

Everlast® is a registered trademark of Chelsea Building Products, Inc. Chelsea Building Products reserves the right to alter, modify, or discontinue items from time to time without notice.

All products made in the USA. ©2021 #CBPEV-6-21-TRM

Distinctive trim choices,  
for a beautiful finish.

#### PREMIUM EVERLAST COLOR-MATCHED TRIM



3-1/2" Outside  
Corner Post



3-1/2" Lineal

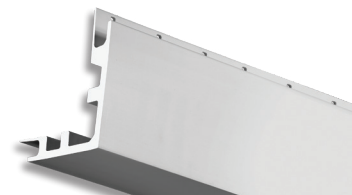


1-1/2" J Channel



Perimeter 1-1/2" Trim  
with Trim Receiver

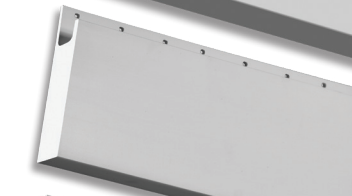
#### CELLULAR PVC TRIM\*



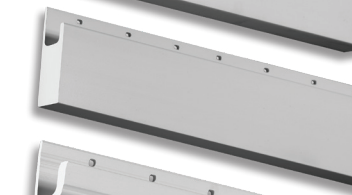
5-1/2" Outside  
Corner Post



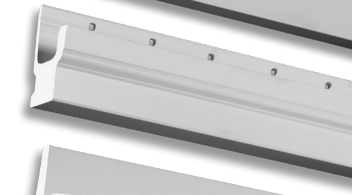
3-1/2" Outside  
Corner Post



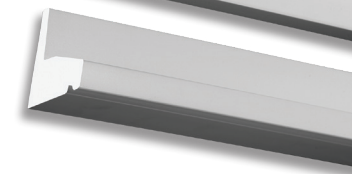
5-1/2" Casing



3-1/2" Casing



Brickmould



Water Table

#### RIGID PVC ACCESSORY



Starter Strip