

Abbey | 590 sq ft is the base design for a small but mighty green home, studio, cabin, or micro-cottage development. Add to a site for a guest house or as a primary residence. Customization includes moving windows and doors, selection of standard finishes, and even expanding or shrinking total sq ft. Start here and make it your own with your local builder. We provide the design, permit set and high-performance structural building envelope – you provide the land, inspiration, and the builder.

HOME PLAN

- 590 sq ft
- 1 bedroom
- 1 bathroom
- kitchen standard
- kitchen island
- all-electric
- net-zero ready

BENEFITS

- 🔊 peaceful quiet
- 🌿 low-energy
- 🌡️ comfort
- ☀️ daylight
- 🌬️ healthy air
- ⚡ efficient systems
- 🔄 flexible orientation
- 🪟 quality windows



Abbey

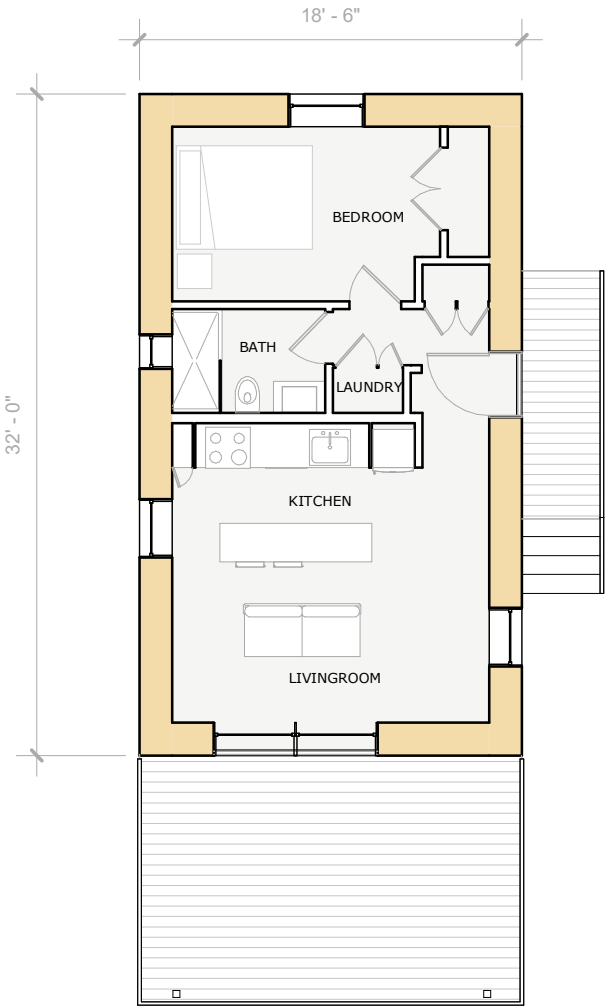
SHED



GABLE

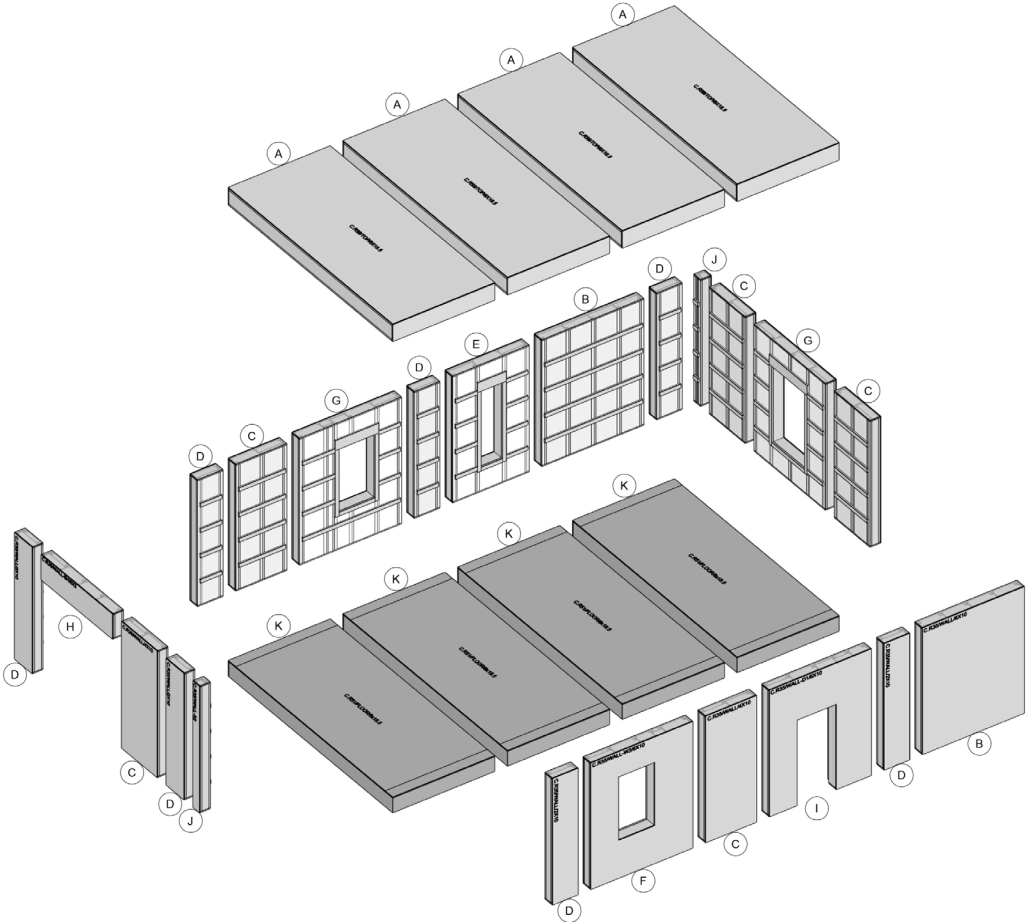


FLAT



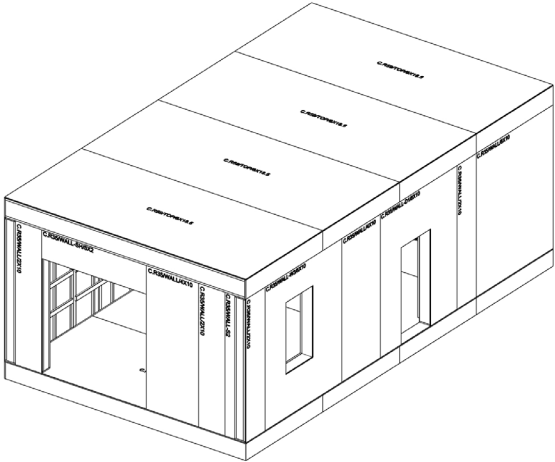
OPTIONS

- foundation types
- roof styles
- decks
- garage + storage
- custom baths
- custom kitchen
- off-grid systems






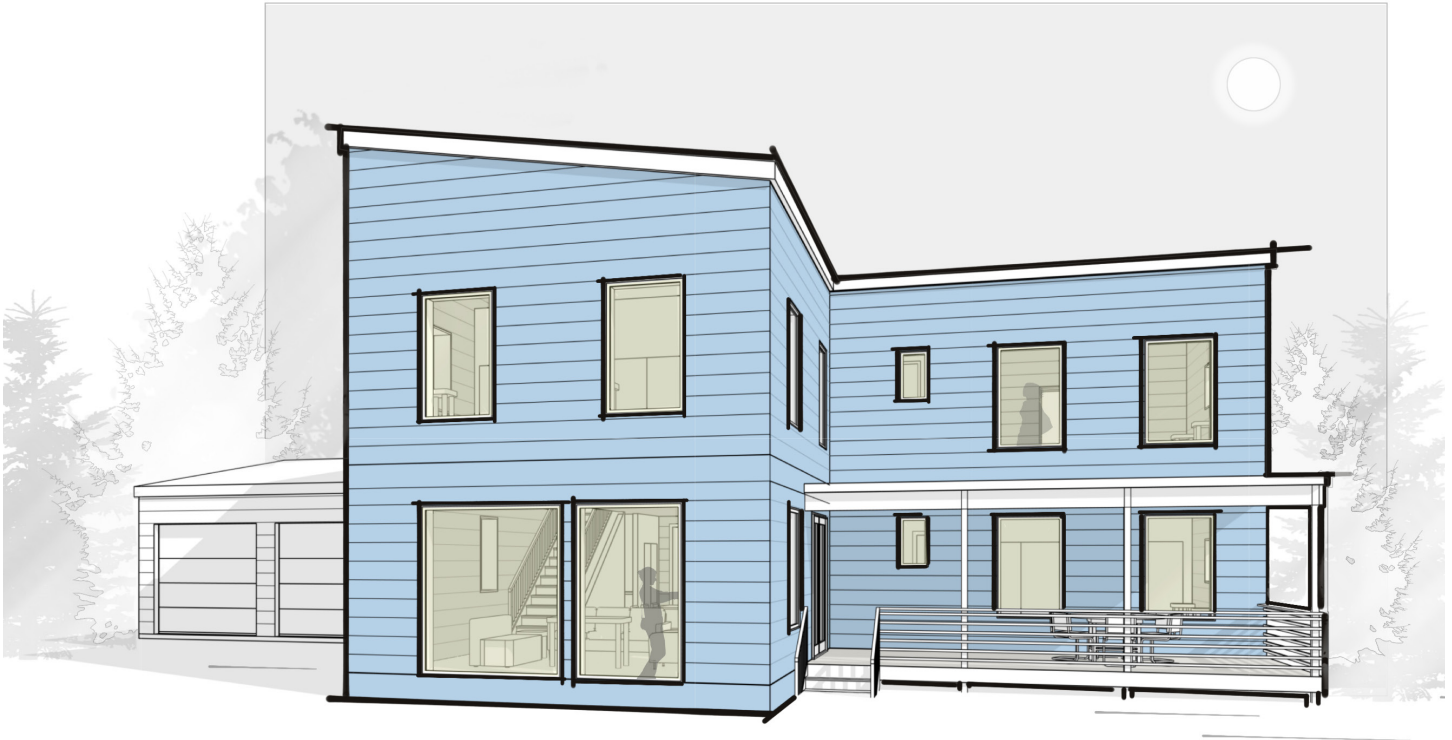
PANEL ATTRIBUTES

-  structural
-  sustainable
-  vapor-open
-  airtightness
-  thermal bridge-free
-  fully insulated
-  weather tight
-  speed construction
-  recycled content



PANEL LAYOUT SHOWN

-  walls R-52
-  top R-80
-  floors R-51



Lina | 2,772 sq ft is family ready in any setting. Utilizing B.PUBLIC Prefab's standard walls, this 2-story home features ten-foot ceilings, is generous in public and private spaces and designed to be efficient and comfortable year-round. Imagine that with passive comfort the upstairs and downstairs will be equally comfortable with small systems and tiny energy loads.

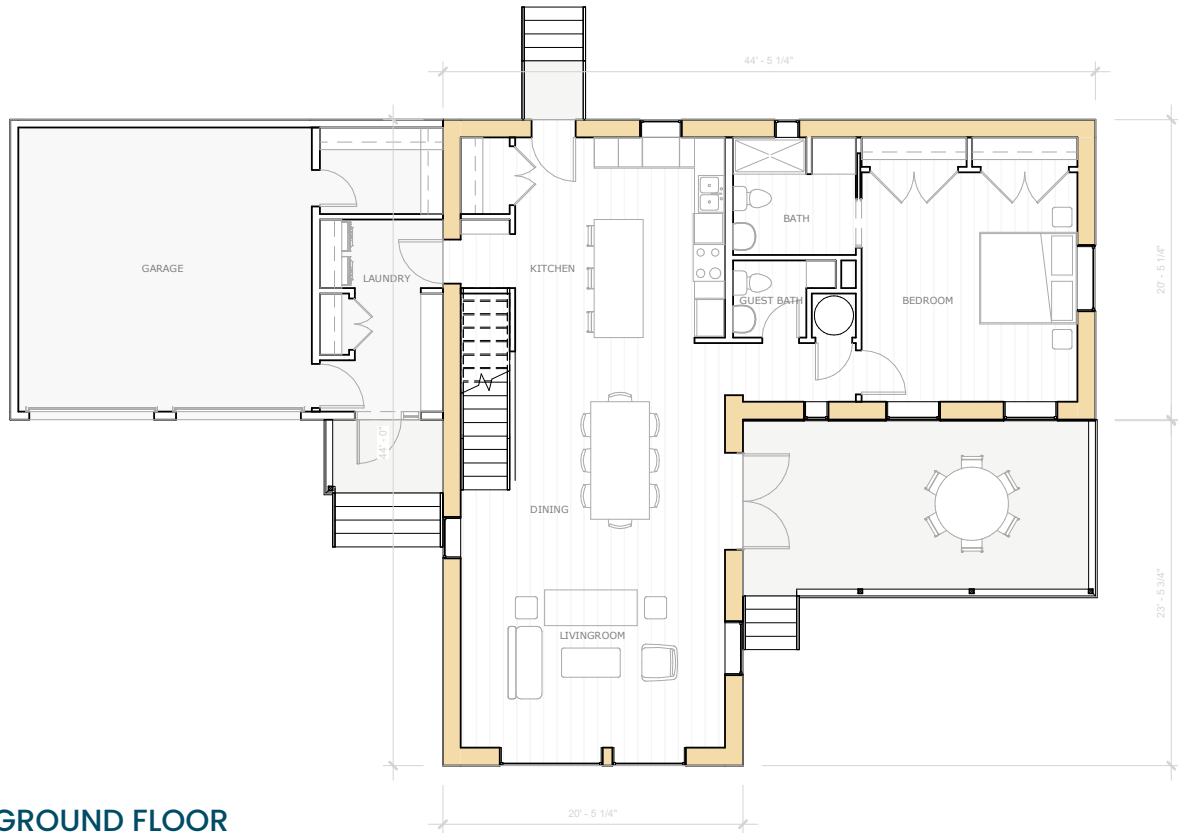
HOME PLAN

- 2,772 sq ft
- 3 bedrooms
- 4 bathrooms
- office & flex area
- garage
- mudroom
- large kitchen
- all-electric
- net-zero ready

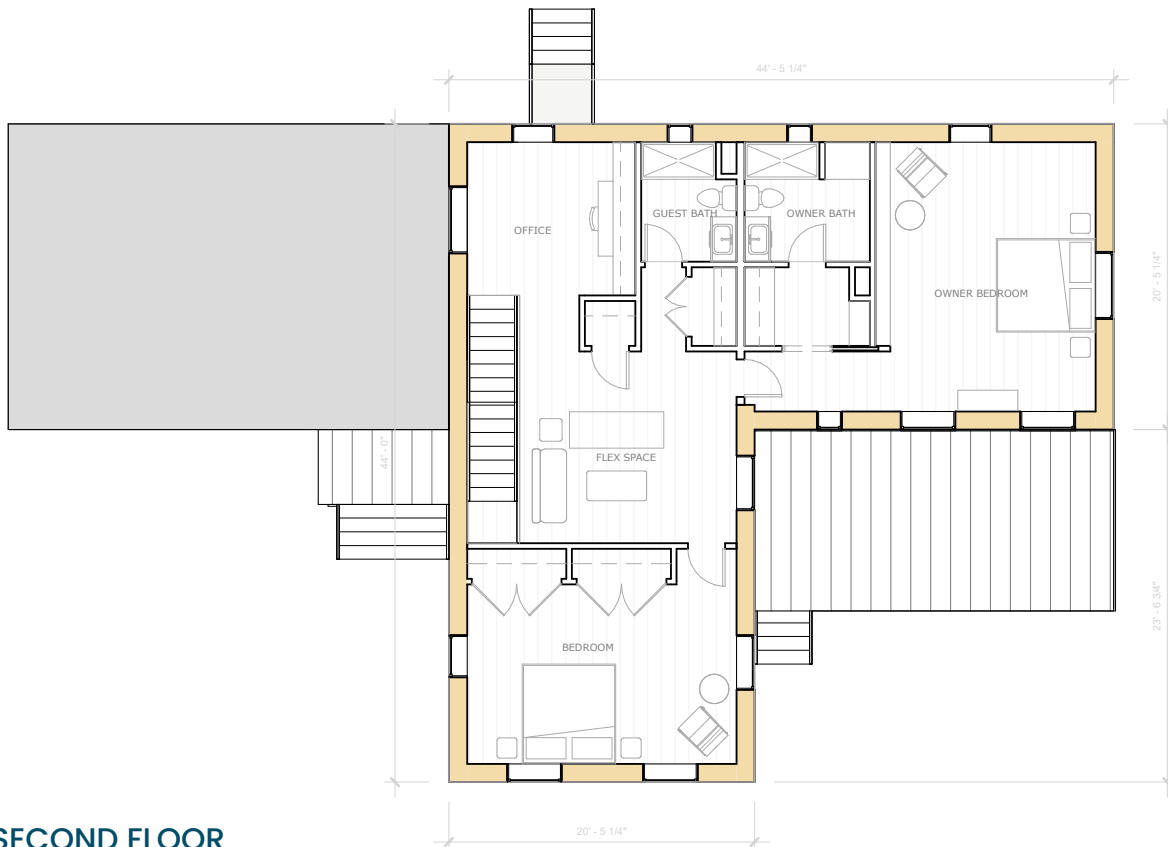
BENEFITS

- peaceful quiet
- low-energy
- comfort
- daylight
- healthy air
- efficient systems
- flexible orientation
- quality windows





GROUND FLOOR



SECOND FLOOR

SHED



GABLE

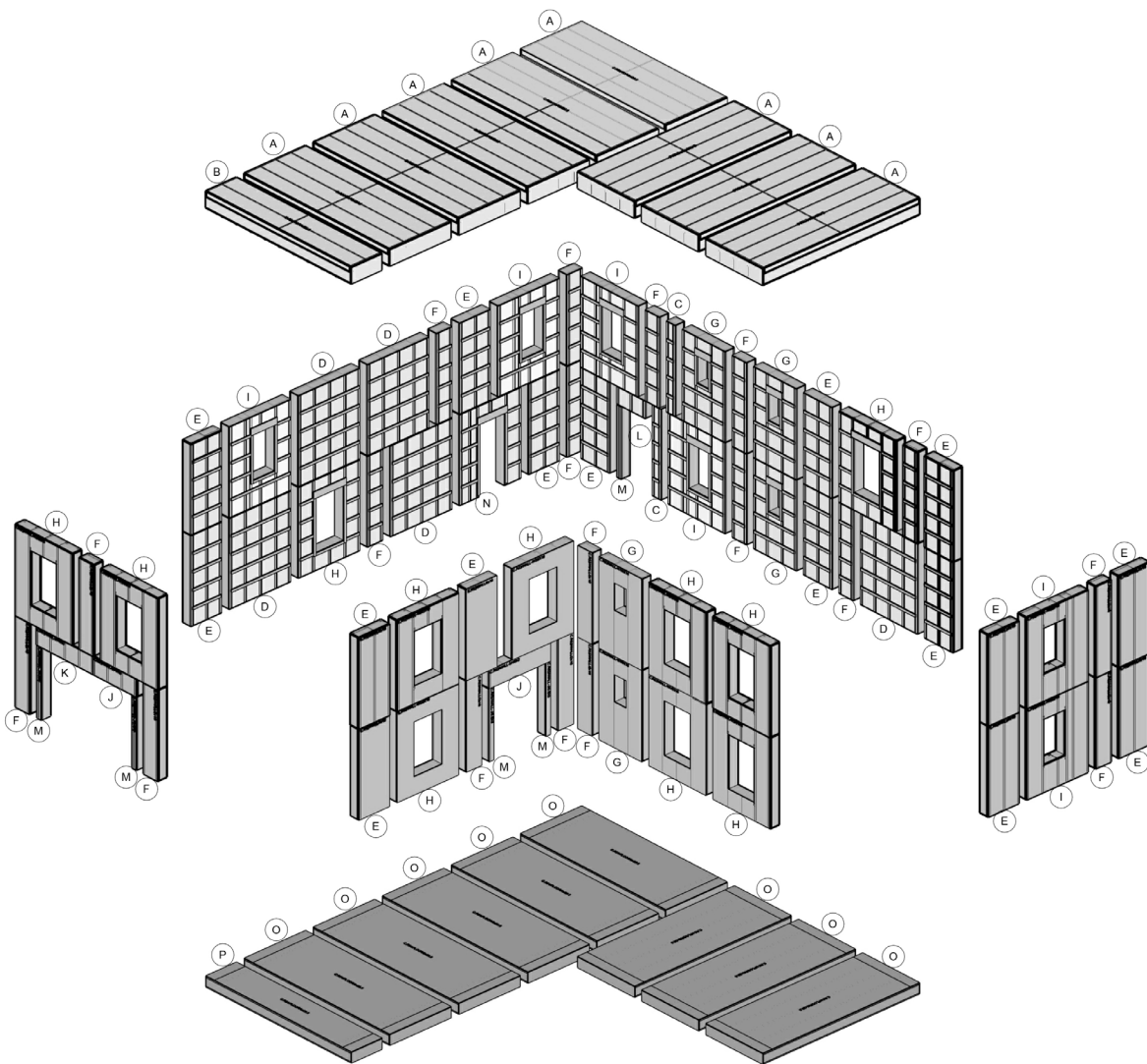


FLAT



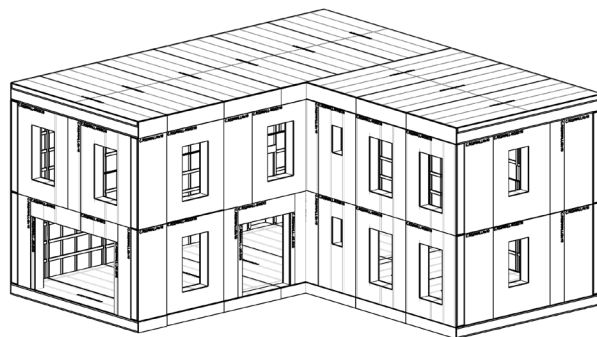
OPTIONS

- foundation types
- roof styles
- decks
- garage + storage
- custom baths
- custom kitchen
- off-grid systems






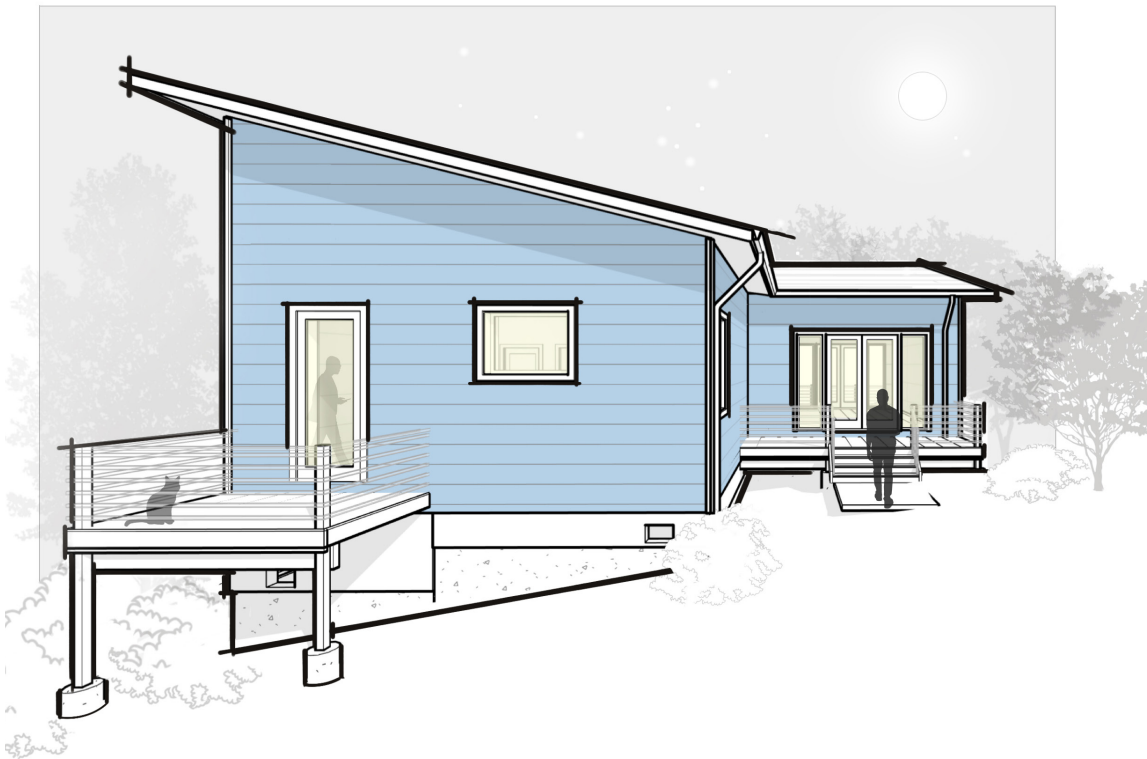
PANEL ATTRIBUTES

-  structural
-  sustainable
-  vapor-open
-  airtightness
-  thermal bridge-free
-  fully insulated
-  weather tight
-  speed construction
-  recycled content



PANEL LAYOUT SHOWN

-  walls R-52
-  top R-80
-  floors R-51



World | 1,349 sq ft | This home, shown with 2 bedroom / 2 bath and a shed roof, is customizable. You can shuffle windows & doors, decks & stairs, and choose from different foundations and roof types to suit the home location. Designed for energy conservation, deep comfort, and generations of use, this home is Net-zero ready.

HOME PLAN

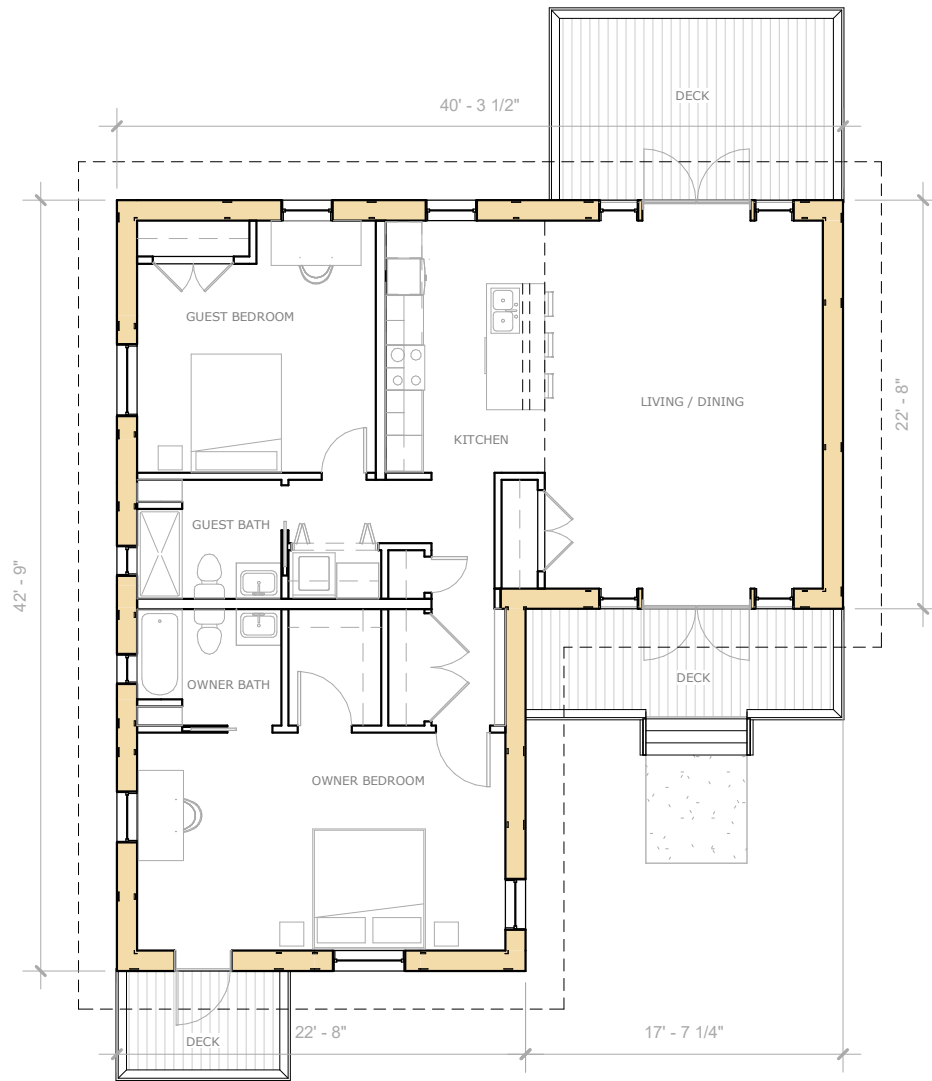
- 1,349 sq ft
- 2 bedrooms
- 2 bathrooms
- kitchen standard
- kitchen island
- all-electric
- net-zero ready

BENEFITS

- peaceful quiet
- low-energy
- comfort
- daylight
- healthy air
- efficient systems
- flexible orientation
- quality windows

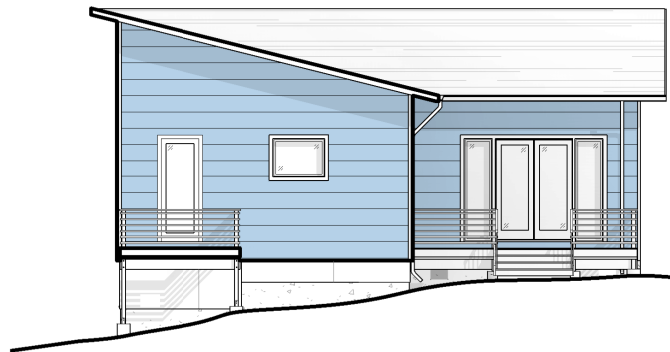


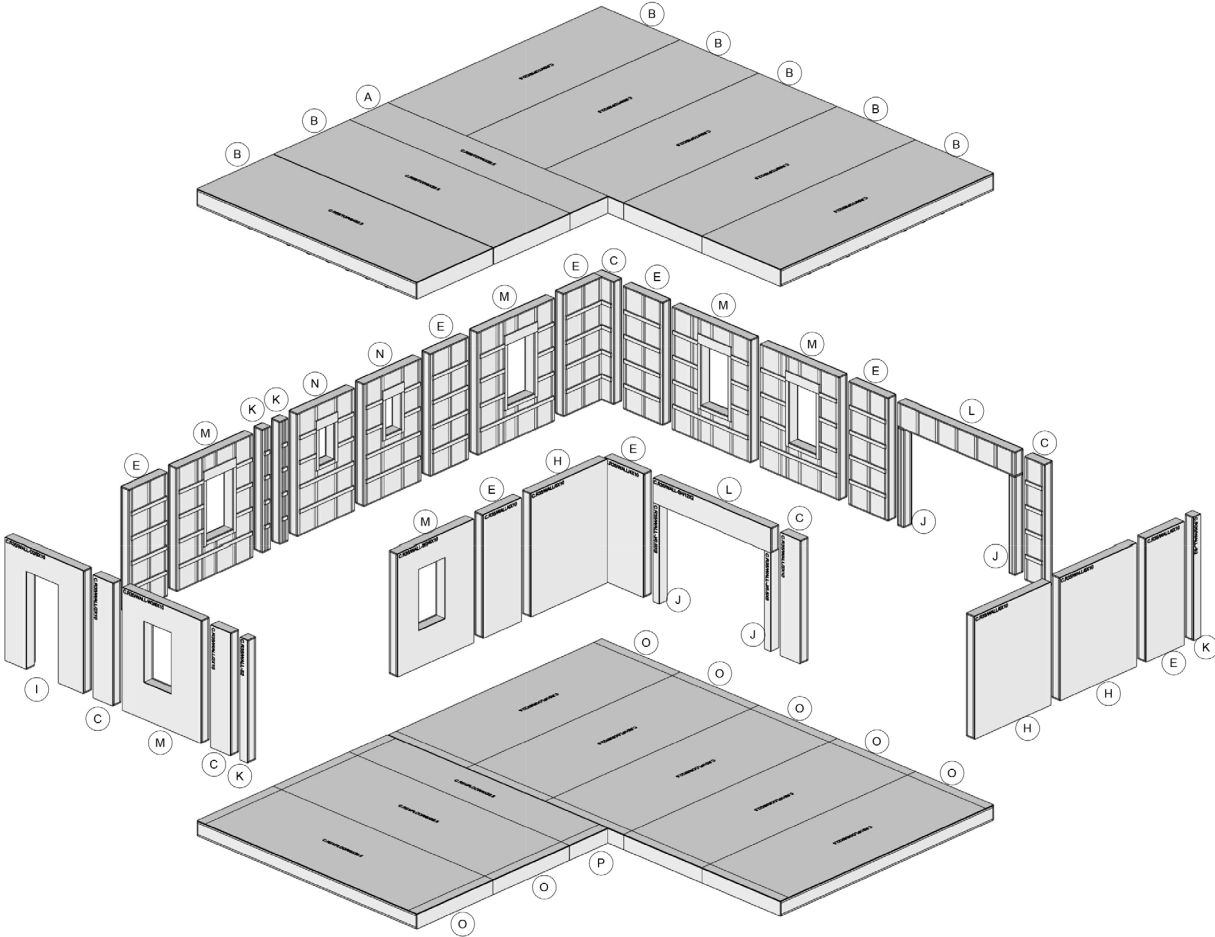
World



OPTIONS

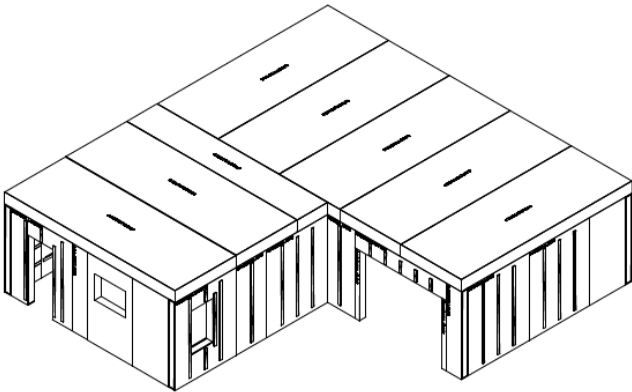
- foundation types
- roof styles
- decks
- garage + storage
- custom baths
- custom kitchen
- off-grid systems








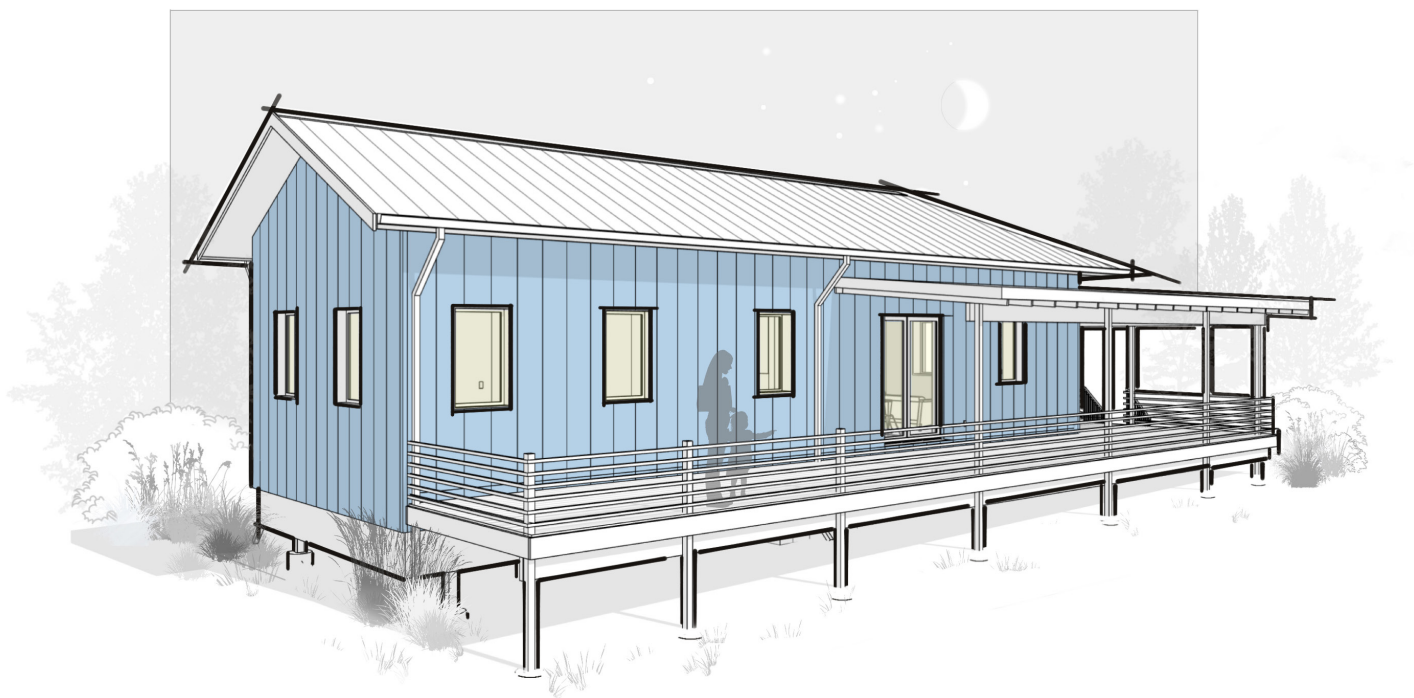
PANEL ATTRIBUTES

-  structural
-  sustainable
-  vapor-open
-  airtightness
-  thermal bridge-free
-  fully insulated
-  weather tight
-  speed construction
-  recycled content



PANEL LAYOUT SHOWN

-  walls R-52
-  top R-80
-  floors R-51



West | 1,253 sq ft | plan designed with bedrooms separated for privacy, with kitchen and living space centered around food and friends. We find that no matter the gathering everyone ends up in the kitchen, so we made the home plan to suit. Although, with a deck like this – you may spend just as much time outside as in. West plan is shown here with crawl space and post and beam foundation configuration.

HOME PLAN

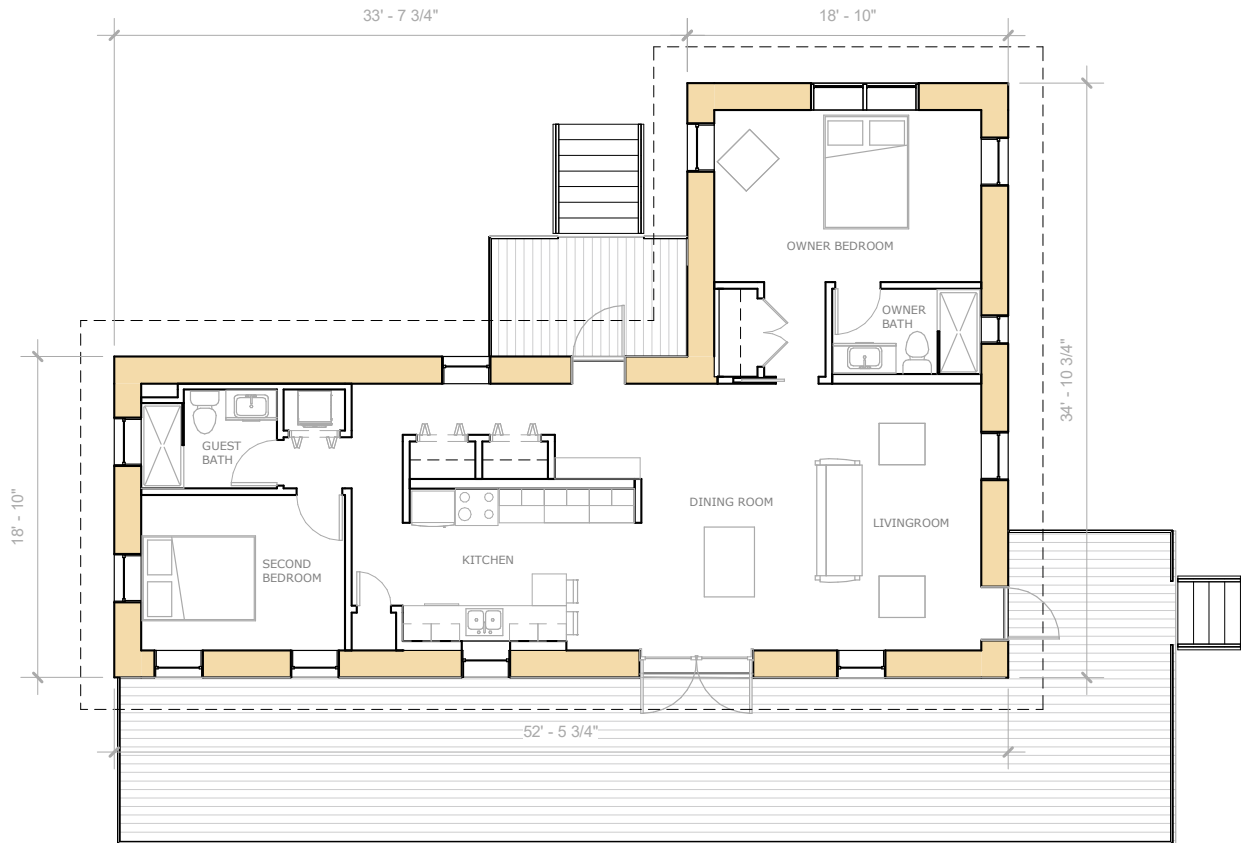
- 1,253 sq ft
- 2 bedrooms
- 2 bathrooms
- central kitchen
- all-electric
- net-zero ready
- + wrap porch

BENEFITS

- peaceful quiet
- low-energy
- comfort
- daylight
- healthy air
- efficient systems
- flexible orientation
- quality windows



West



SHED



GABLE

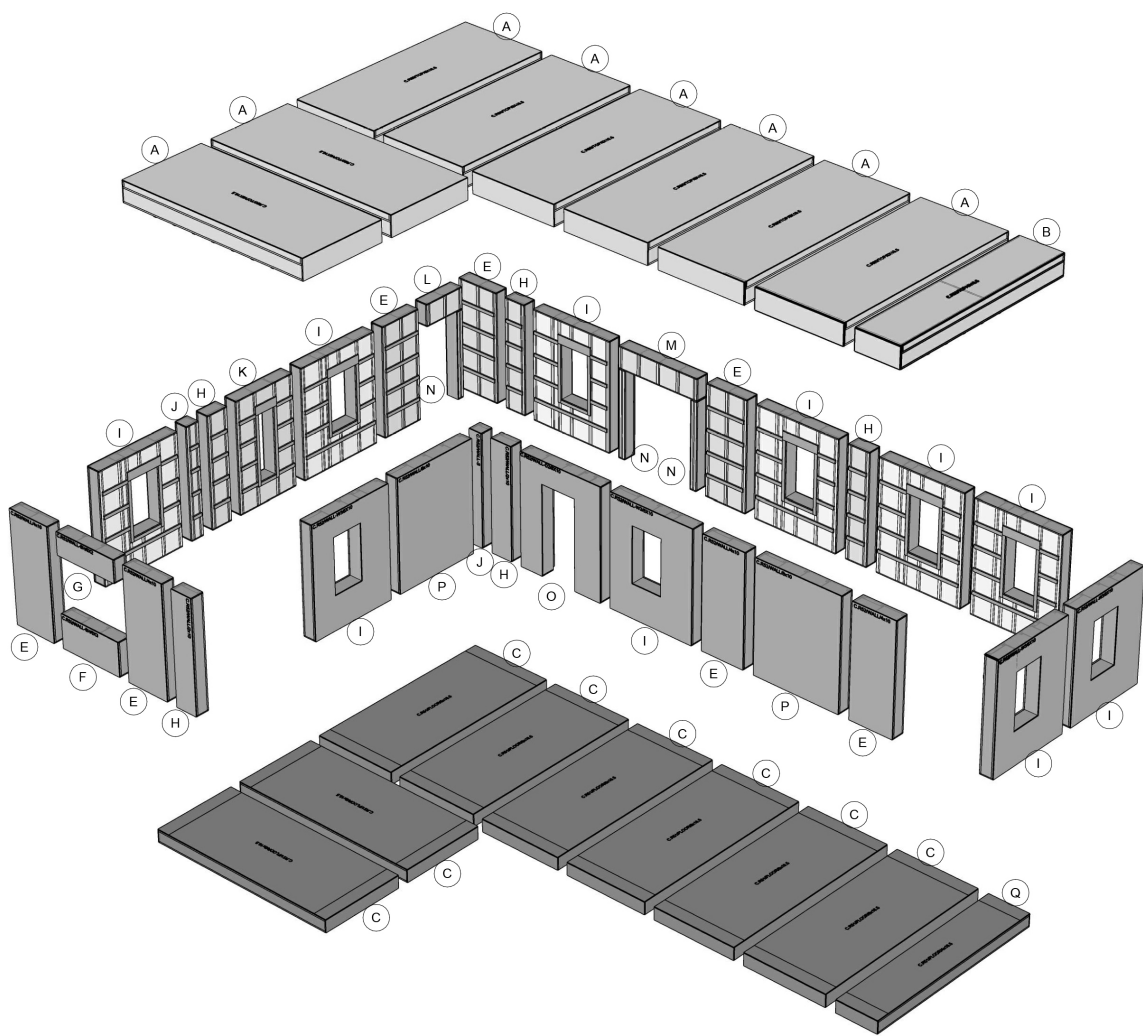


FLAT



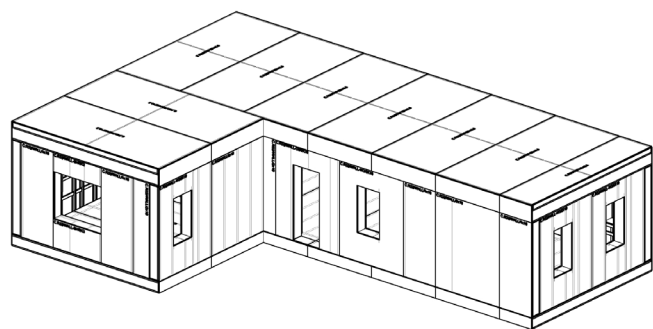
OPTIONS

- foundation types
- roof styles
- decks
- garage + storage
- custom baths
- custom kitchen
- off-grid systems






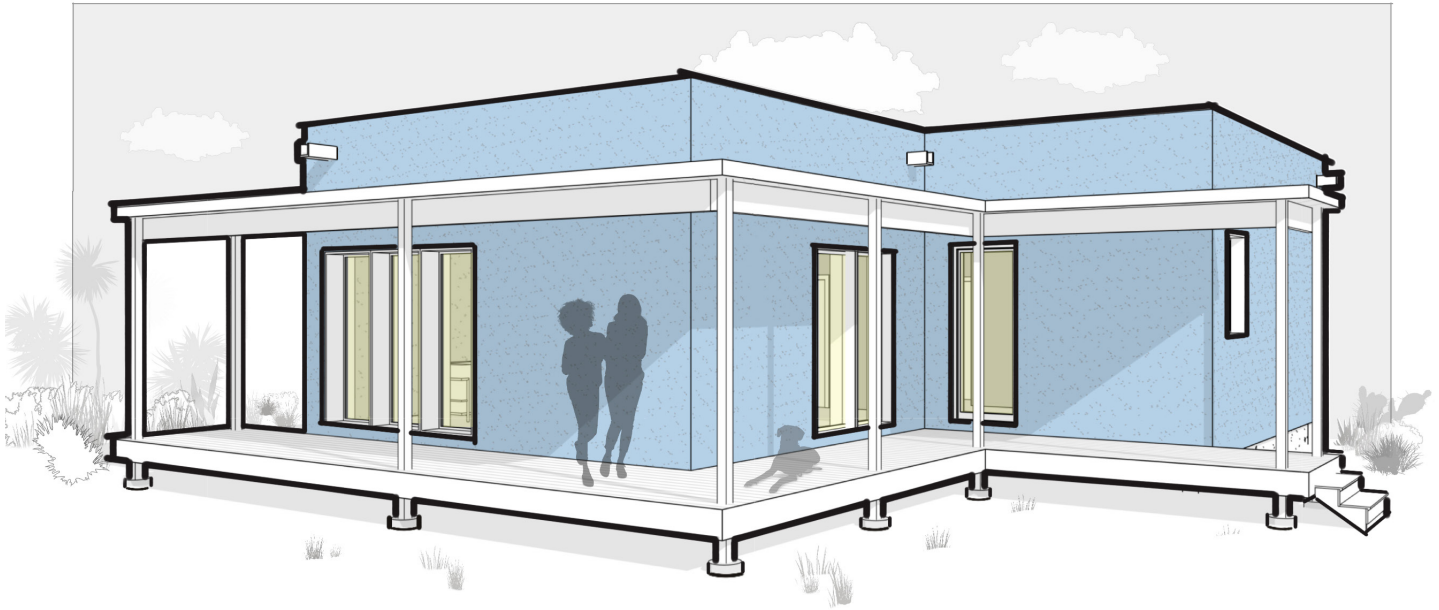
PANEL ATTRIBUTES

-  structural
-  sustainable
-  vapor-open
-  airtightness
-  thermal bridge-free
-  fully insulated
-  weather tight
-  speed construction
-  recycled content



PANEL LAYOUT SHOWN

-  walls R-52
-  top R-80
-  floors R-51



Brower 1,349 sq ft She might be the new kid on the block but with this nearly-net-zero perfect living space, she is making friends with her adaptable style and fit on even the smallest lot. This might be the perfect compact home for those who work from home with the micro “zoom room” home office. Shown with a stucco exterior and parapet flat roof this home is high-performance in Santa Fe as well as Hudson, New York. Comfortable and healthy across most climate zones in the US – like all of our B.PUBLIC homes – ready to add your style and customize for your lot or neighborhood development.

HOME PLAN

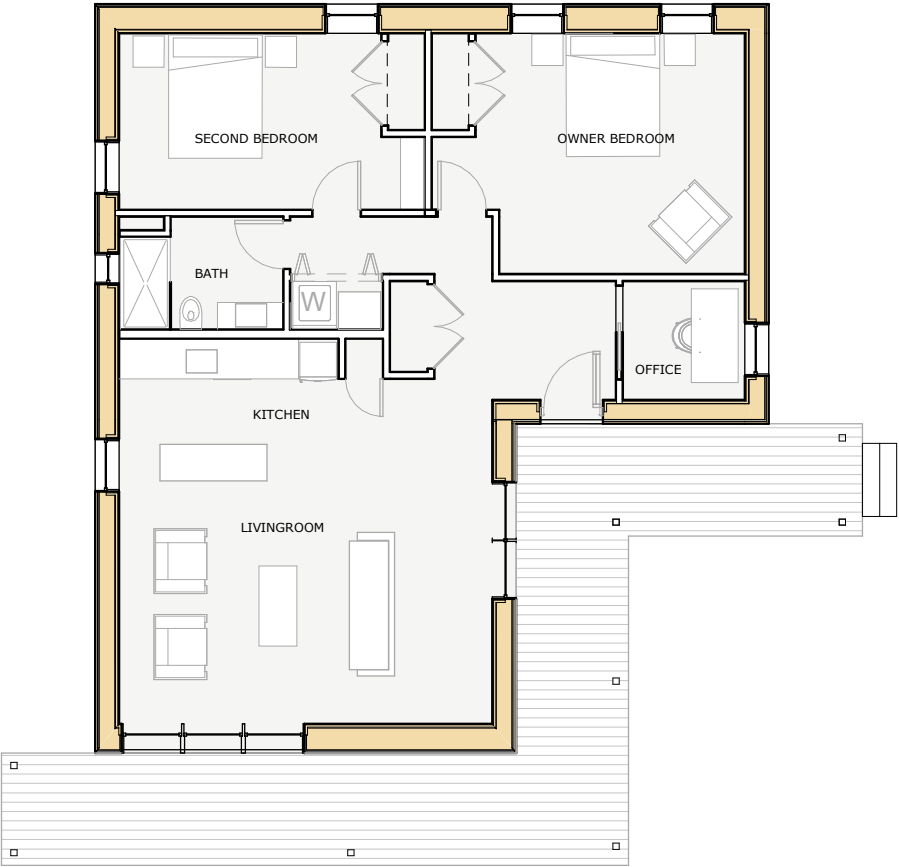
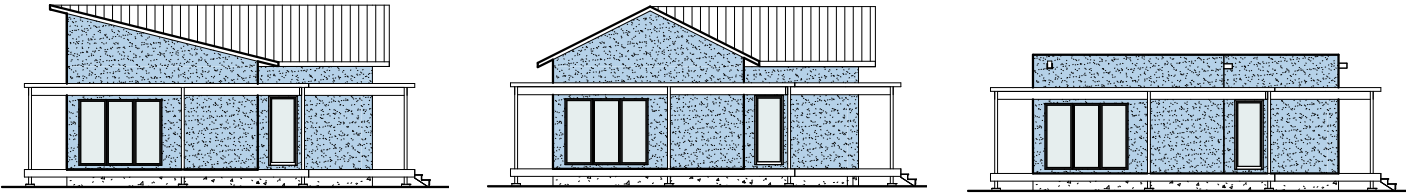
- 1,349 sq ft
- 2 bedrooms
- 1 bathrooms
- 1 office
- standard kitchen
- all-electric
- net-zero ready

BENEFITS

- peaceful quiet
- low-energy
- comfort
- daylight
- healthy air
- efficient systems
- flexible orientation
- quality windows

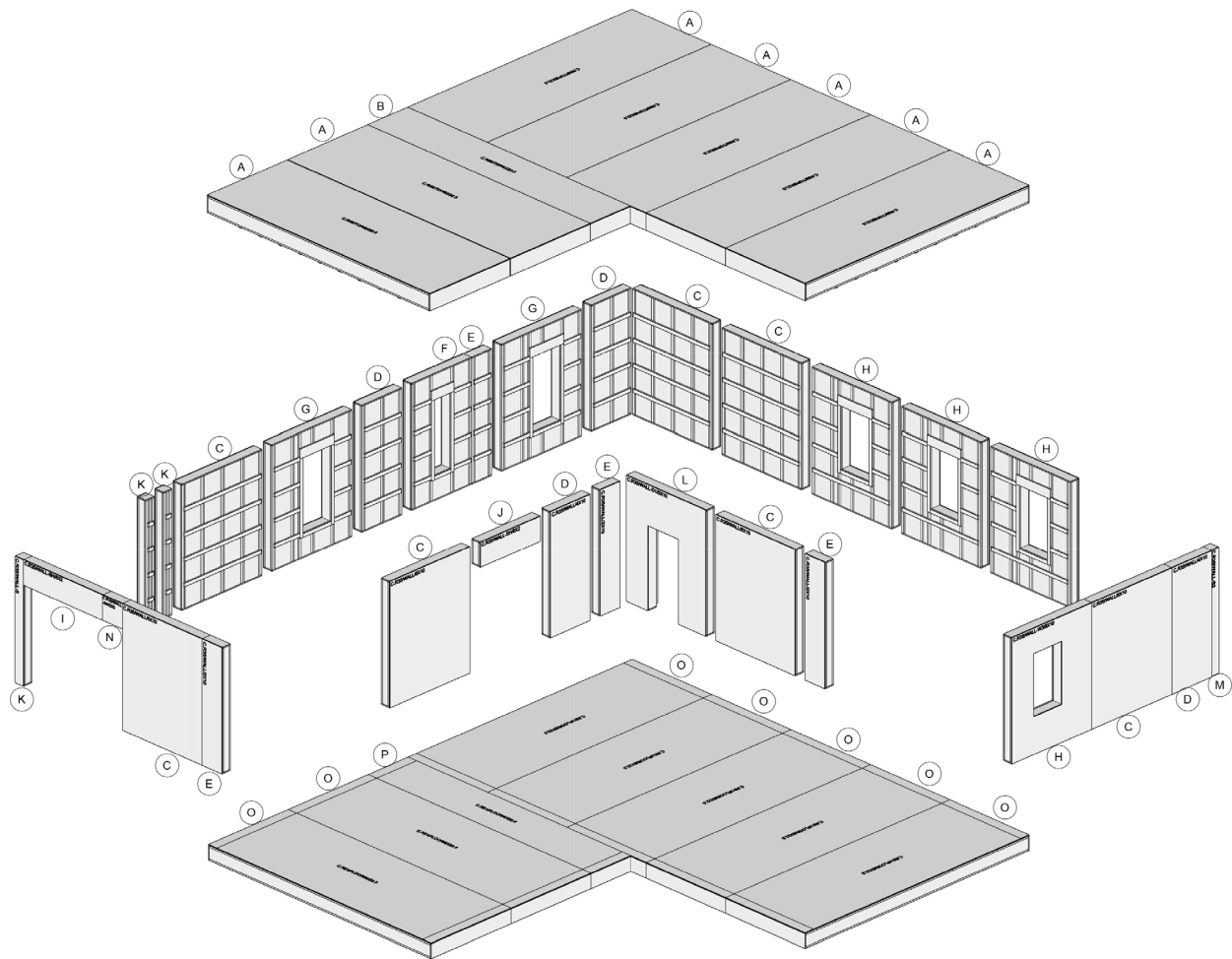


Brower



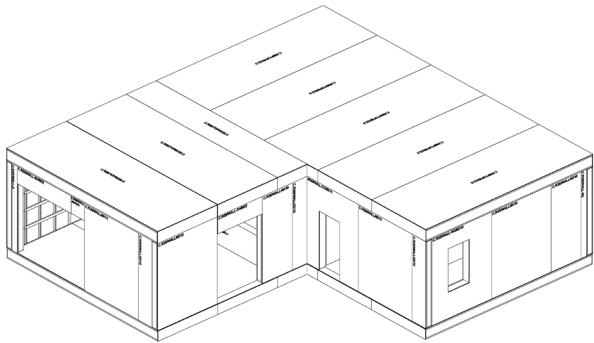
OPTIONS

- foundation types
- roof styles
- decks
- garage + storage
- custom baths
- custom kitchen
- off-grid systems






PANEL ATTRIBUTES

-  structural
-  sustainable
-  vapor-open
-  airtightness
-  thermal bridge-free
-  fully insulated
-  weather tight
-  speed construction
-  recycled content



PANEL LAYOUT SHOWN

-  walls R-35
-  top R-59
-  floors R-51