



B.PUBLIC Homes.

Low energy is just the beginning.

HEALTH



COMFORT



QUIET



SAVINGS



BENEFITS



MATERIALS



NATURAL LIGHT



RESILIENCE



STYLE



Build for Life

HEALTH

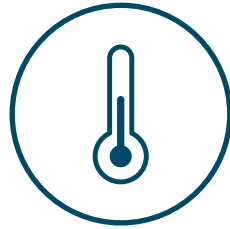


- B.PUBLIC building envelopes are designed to be **airtight** and paired with advanced ventilation systems that constantly replenish the home with **fresh air**.
- Clean air means the continuous removal of CO2, unpleasant odors, allergens, and excess moisture.
- The intentional, year-round control of air-flow offers **energy-saving** benefits while nourishing a home with life-sustaining air.



ERV System

COMFORT



- B.PUBLIC designs for **year-round thermal comfort** with ease and less energy. What could be more luxurious than being comfortably barefoot at home in the winter?
- When your building is temperature-stable and energy efficient, it is easy to stay safe and comfortable through adverse weather events and power disruptions.



Year-Round Comfort

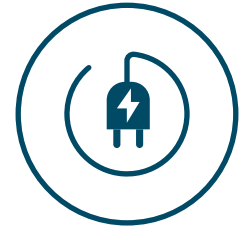
QUIET



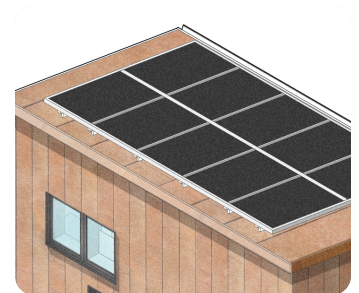
- B.PUBLIC homes are quiet; an invisibly and luxurious amenity of **Super-insulated** walls paired with **high-performance windows**.
- A recent survey of 1,200 Americans pointed to noisy neighbors as the #1 complaint. Let's make our communities enjoyable by building quiet homes.

Dense Packed Cellulose
for Super Insulated Walls

SAVINGS

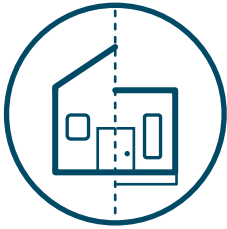


- B.PUBLIC's **conservation-first** building approach is designed to use little, last longer, and run on small electric systems that pull significantly less from the grid.
- Our homes require **80-90% less energy** while providing consistent and enjoyable indoor temperatures.
- A building envelope that is well-insulated, air-tight, and thermal-bridge-free creates value that will **last for generations**.
- Designed with energy efficient **electric appliances** in mind.



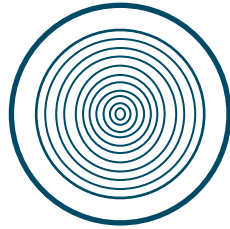
Solar Ready

STYLE



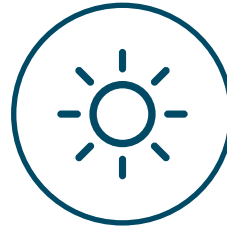
- B.PUBLIC homes are **flexible** in **design and styles**. The technical amenities are invisible and the building's unique character is what you see and experience.
- **Regional exterior finishes** are in the hands of the homeowner and builder. From stucco to wood siding and flat to pitched roofs, anything is possible.
- Interior **styles are limitless** within the square corners and deep-set windows of our thick exterior walls.

MATERIALS



- B.PUBLIC'S building envelope is constructed with **wood** and dense-packed **cellulose insulation** that is 86% post-consumer **recycled newsprint**.
- Our panels are wrapped in best-in-class **weather barriers** and **air-barriers** to ensure robust performance and protection from the elements.

NATURAL LIGHT



- B.PUBLIC homes welcome **natural light**. The sun assists in heating and lighting a home effortlessly and beautifully by maximizing indirect light to reduce glare.
- Unlike Passive Solar, the **Passive House** approach allows for a building's orientation to be flexible without focusing exclusively on the southern exposure,

RESILIENCE



- B.PUBLIC homes are designed for the next generations. The ability to repair, renovate, and add to our structures, without sacrificing the integrity of materials or performance, increases long-term resilience and the cradle-to-grave **life-cycle** of our buildings.
- Building today for increased weather volatility, energy insecurity, and more rigorous building standards is not only a good investment, it is **positive climate action**.
- Our homes are built to last, with an estimated lifespan of at least **100 years**.



Infinite Style Choices

Wood Construction



Natural Light



Long Lasting Materials

B.PUBLIC Homes.

Low energy is just the beginning.

The **B.PUBLIC Prefab** component system is designed and assembled to create a building's structure & thermal envelope. B.PUBLIC panels utilize code-compliant wood framing & sheathing. The system is thermal-bridge-free, vapor-open, air-tight, and super-insulated with dense-packed cellulose. The panels are wrapped and sealed with air and weather-resistant barriers. The panelized building blocks of Floor, Wall, and Top components work together to create a structural shell ready to be finished with interior and exterior finishes. Our team is trained to support professionals designing with B.PUBLIC components.

