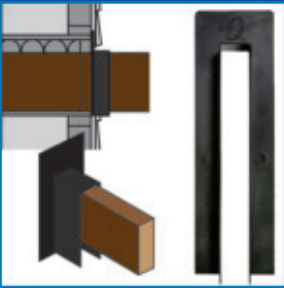


# MISC. PRODUCTS



**FT:**  
**FLASHING TOOL**  
Used to apply pressure to self-adhered flashings, contractors and seam tapes. Quicker, better and easier than a J-roller.



**JF-2X:**  
**JF-4X:**  
**JOIST FLASHING**  
For Cantilevered Joist  
Cut to size,  
fits 2" x 12", 2" x 10"  
2" x 8", or 2" x 6"  
fits 4" x 12", 4" x 10"  
4" x 8", or 4" x 6".



**P-50 GW:**  
**PLUMBING FLASHING PANEL**  
**w/ Ground Wire**  
Fits 1/2" to 3/4" sized pipes - copper, rigid, PVC, or ABS with separate Ground Wire. (Can also be used for electrical conduit)



**P-100 GW:**  
**PLUMBING FLASHING PANEL**  
**w/ Ground Wire**  
Fits 1" to 1 1/4" sized pipes - copper, rigid, PVC, or ABS with separate Ground Wire. (Can also be used for electrical conduit)



**P-150 GW:**  
**PLUMBING FLASHING PANEL**  
**w/ Ground Wire**  
Fits 1 1/2" to 1 3/4" sized pipes - copper, rigid, PVC, or ABS with separate Ground Wire. (Can also be used for electrical conduit)



**P-200 GW:**  
**PLUMBING FLASHING PANEL**  
**w/ Ground Wire**  
Fits 2" to 2 1/2" sized pipes - copper, rigid, PVC, or ABS with separate Ground Wire. (Can also be used for electrical conduit)

# BEATING THE ALTERNATIVE QUICKFLASH® SOLUTION vs OTHERS



VS



VS



VS



VS



# WORKS WITH ZIP SYSTEM® & THERMOPLY®



# WORKS WITH ALL TYPES OF CLADDING



SCAN FOR INSTALL  
GUIDE VIDEOS

**QUICKFLASH**  
WEATHERPROOFING PRODUCTS, INC.

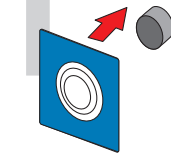
4129 WAGON TRAIL AVE.  
LAS VEGAS, NV 89118  
(702) 614-6100 • (702) 614-4090 FAX  
(800) 963-6886  
www.QuickflashProducts.com



# FLASHING PANELS FOR WALL PENETRATIONS



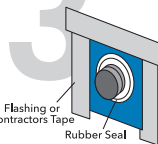
**SIMPLE**



**FAST**



**EFFECTIVE**



**QUICKFLASH**  
WEATHERPROOFING PRODUCTS, INC.

FOR MORE INFORMATION  
ON OUR QUICKFLASH® PRODUCTS,  
PLEASE VISIT US AT:  
www.QuickflashProducts.com



# QUICKFLASH® BENEFITS

## MOISTURE BARRIER



Create a weatherproof seal around electrical, plumbing and HVAC exterior wall penetrations.

## ENERGY EFFICIENCY

Products specifically designed to prevent air infiltration, creating a more comfortable and energy-efficient home.



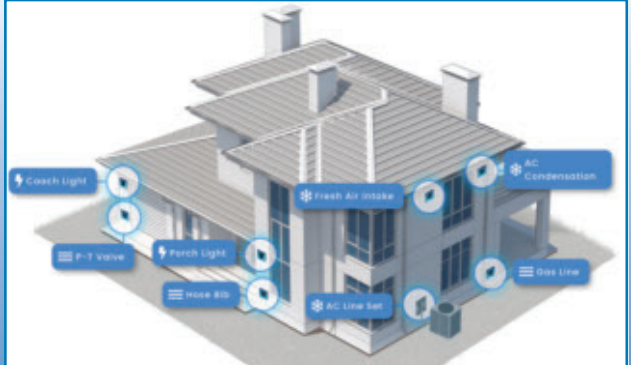
## REDUCE INSECT INFESTATION



Helps keep the bugs out with a tight seal around a homes' exterior outlets, pipes, conduit, and light fixtures.

## TOTAL BUILDING ENVELOPE

Part of a complete system to minimize exposure to problems such as latent defects and toxic mold.



- Reduces liability.
- Stops air leakage.
- Helps prevent water intrusion.
- Economical - saves time and labor.
- Eliminates the need for sealants.
- Non-corrosive, Non-conductive
- Flashing specifically designed for wall penetrations.
- Self sealing around fasteners.
- Easy to integrate with building envelope.
- Works with all cladding systems.
- 10 Year limited warranty.



ELECTRICAL PANELS



**E-LV or P-25:**  
**E-LV 2X:**  
**ELECTRICAL LOW VOLTAGE FLASHING PANEL**  
Fits Low Voltage rounded wire, coaxial cable, or 1/8" to 3/8" sized pipes - copper, rigid, and PVC.



**E-SGB:**  
**ELECTRICAL SINGLE GANG BOX FLASHING PANEL**  
Used on 3-coat stucco and lap siding. Fits specified electrical single gang plastic boxes only.



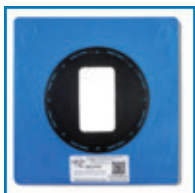
**E-SGB-A 7/8":**  
**E-SGB-A 1 3/8":**  
**ELECTRICAL SINGLE GANG BOX FLASHING PANEL**  
Fits Allied Moulded electrical single gang box only (Part # 9327-N).



**E-SGB-C 5/8":**  
**E-SGB-C 7/8":**  
**E-SGB-C 1 3/8":**  
**ELECTRICAL SINGLE GANG BOX FLASHING PANEL**  
Fits Carlon electrical single gang box (Part # B121ADJ only).



**E-DGB-C 7/8":**  
**E-DGB-C 1 3/8":**  
**ELECTRICAL DUAL GANG BOX FLASHING PANEL**  
Fits Carlon electrical DUAL gang box (Part # B234ADJ only).



**E-AIB:**  
**ELECTRICAL SINGLE GANG FOR ARLINGTON INBOX™ FLASHING PANEL**

ALWAYS REFER TO THE QUICKFLASH® CROSS REFERENCE SHEET.



**E-3/0 B:**  
**ELECTRICAL 3/0 BOX FLASHING PANEL**  
Used on 3-coat stucco and lap siding. Fits specified electrical 3/0 plastic boxes only.



**E-3/0 B-A 7/8":**  
**E-3/0 B-A 1 3/8":**  
**ELECTRICAL 3/0 BOX FLASHING PANEL**  
Fits Allied Moulded electrical 3/0 boxes (Part #'s 9335-HNK, 9335-HNGK only).



**E-4/0 B:**  
**ELECTRICAL 4/0 BOX FLASHING PANEL**  
Used on 3-coat stucco and lap siding. Fits specified electrical 4/0 plastic boxes only.



**E-4/0 SB:**  
**ELECTRICAL 4/0 STEEL BOX FLASHING PANEL**  
Used on 1-coat stucco, EIFS, & rainscreen systems. Fits specified electrical 4" metal "octagon" boxes only.



**E-PC 3/0:**  
**ELECTRICAL PANCAKE 3/0 BOX FLASHING PANEL**  
Used on 3-coat stucco and lap siding. Fits specified electrical pancake 3/0 metal boxes only.



**E-PC 4/0:**  
**ELECTRICAL PANCAKE 4/0 BOX FLASHING PANEL**  
Used on 3-coat stucco and lap siding. Fits specified electrical pancake 4/0 metal boxes only.

PLUMBING, HVAC & ELECTRICAL PANELS



**P-2PS:**  
**PLUMBING FLASHING PANEL**  
Two piece system. Used on copper pipes with exterior T's sweated on. Cut out center to fit around 1/2" to 2" sized copper pipes. (**IMPORTANT:** Caulking is required to make seal at pipe to panel.)



**P-50:**  
**DBL-50:**  
**PLUMBING FLASHING PANEL**  
Fits 1/2" to 3/4" sized pipes: copper, rigid, PVC, or ABS. (Can also be used for electrical conduit.)



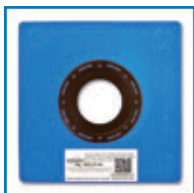
**P-100:**  
**PLUMBING FLASHING PANEL**  
Fits 1" to 1 1/4" sized pipes: copper, rigid, PVC, or ABS. (Can also be used for electrical conduit.)



**P-150:**  
**PLUMBING FLASHING PANEL**  
Fits 1 1/2" to 1 3/4" sized pipes: copper, rigid, PVC, or ABS. (Can also be used for electrical conduit.)

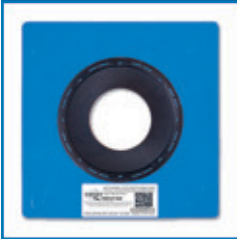


**P-200:**  
**PLUMBING FLASHING PANEL**  
Fits 2" to 2 1/2" sized pipes: copper, rigid, PVC, or ABS. (Can also be used for electrical conduit.) Also fits 3" single wall sheet metal duct.

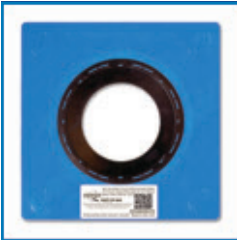


**P-300:**  
**PLUMBING & HVAC FLASHING PANEL**  
Fits 3" sized pipes: copper, rigid, PVC, or ABS. Also fits 4" single wall sheet metal duct.

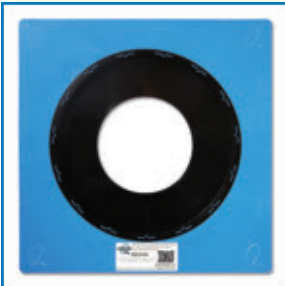
ALWAYS REFER TO THE QUICKFLASH® CROSS REFERENCE SHEET.



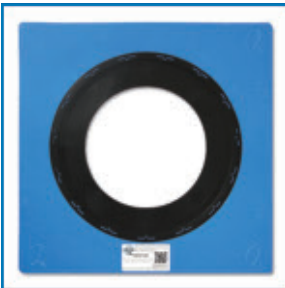
**P-400:**  
**PLUMBING & HVAC FLASHING PANEL**  
Fits 4" sized pipes: copper, rigid, PVC, or ABS. Also fits 5" single wall sheet metal duct.



**P-600:**  
**PLUMBING & HVAC FLASHING PANEL**  
Fits 6" sized pipes: copper, rigid, PVC, or ABS. Also fits 6" single wall sheet metal duct.



**P-800:**  
**PLUMBING & HVAC FLASHING PANEL**  
Fits 8" sized pipes: copper, rigid, PVC, or ABS. Also fits 7", 8" or 9" single wall sheet metal duct.



**P-1000:**  
**PLUMBING & HVAC FLASHING PANEL**  
Fits 10" sized pipes: copper, rigid, PVC, or ABS. Also fits 10" or 11" single wall sheet metal duct.

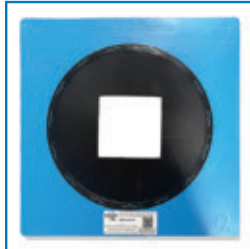


**P-1200:**  
**PLUMBING & HVAC FLASHING PANEL**  
Fits 12" sized pipes: copper, rigid, PVC, or ABS. Also fits 12" single wall sheet metal duct.

A/C PANELS & MISC.



**HVTK 3.95":**  
**HVTK 5.5":**  
**HVAC FLASHING PANEL**  
Fits 2" or 3" Pipe for Horizontal Vent Termination Kits.



**WD-6X:**  
**WALL DRAIN/SCUPPER FLASHING PANEL**  
Fits 6" x 6" Sized Scupper/Wall Drain.



**A/C U-C:**  
**A/C LINE SET CURVED FLASHING PANEL**  
Paintable to match exterior. Use on 1-Coat Stucco, 3-Coat Stucco, and Siding Exteriors. A/C U-C fits Line Sets with 1 1/2" - 2 3/4" Insulation Tubing. Hub must be primed and painted after installation to validate warranty.



**A/C U-S:**  
**A/C LINE SET SQUARED FLASHING PANEL**  
Paintable to match exterior. Use with all Siding Types. Tear-out seal to fit Line Sets with 1 1/2" - 2 1/2" Insulation Tubing or with 2 1/4" - 3 1/2" Insulation Tubing. Hub must be primed and painted after installation to validate warranty.



**A/C U-B:**  
**A/C LINE SET BRICK FLASHING PANEL**  
Paintable to match exterior. Use with traditional Brick, and Cutered Stone Exteriors. Tear-out seal to fit Line Sets with 1 1/2" - 2 1/2" Insulation Tubing or Line Sets with 2 1/4" - 3 1/2" Insulation Tubing. Hub must be primed and painted after installation to validate warranty.