



FRANCHISEE PROGRAM

THE PILLARS OF YOUR BUSINESS

GOLIATH **TECH**
SCREW PILE SYSTEM

WE ARE GOLIATHTECH.

THE RIGHT PILLARS FOR YOUR PROJECTS.

From design to installation, GoliathTech combines engineering and innovation to guarantee a solid foundation for a wide range of construction projects. Our screw piles surpass the highest industry standards.

Our helical GoliathTech screw piles are installed deep beneath the ground freezing level, to solidly support the structure of your clients' projects — additions, decks, gazebos, sunrooms and much more. Better than traditional concrete pillars formed using tubes, screw piles install easily and quickly with no excavation or cure time required. And, because they are less expensive than concrete solutions, partnering with GoliathTech is a smart business investment.



MAKE A BUSINESS DECISION THAT WILL BREAK NEW GROUND.

BECOME A CERTIFIED GOLIATHTECH INSTALLER.

Groundbreaking Technology

Our brand provides the best screw piles on the market installed by experts. We use cutting-edge equipment to guarantee optimal anchoring of each pile. Steadfast. Reliable. Precise. Economical. These are the foundations of the GoliathTech brand promise.

Franchisee Support

When you join the GoliathTech family we make a commitment to the success of your business. We provide you with all the technology, tools and expertise of the GoliathTech brand, as well as ongoing support. GoliathTech gives you training, sales and marketing support to help you grow your business using our product.

Commitment to Innovation

For more than 10 years, we have combined strength with know-how to offer the best piling solutions in North America. Our product innovation enables our franchisees to diversify their service offering, expand their business opportunities and grow their profitability.

EASY START-UP

- be in operation quickly
- no complicated inventory requirements
- flexible products & programs to meet your unique needs

TRAINING & SUPPORT

- certification program to become a GoliathTech installer
- ongoing sales and installation support
- engineering assistance

MARKETING SUPPORT

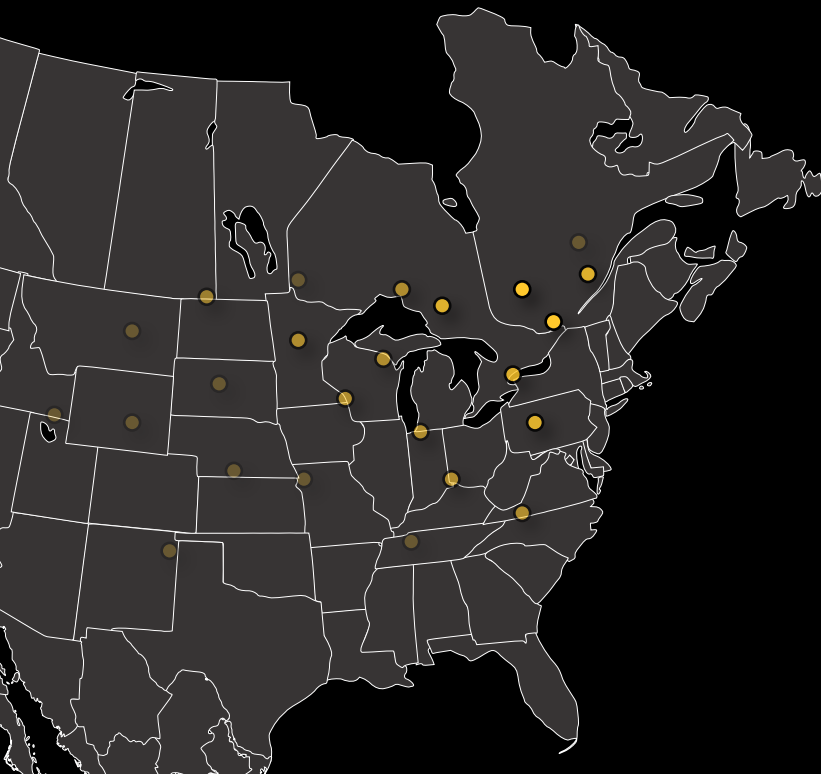
- association with a quality, respected brand
- national advertising program
- website branding opportunities
- cooperative program

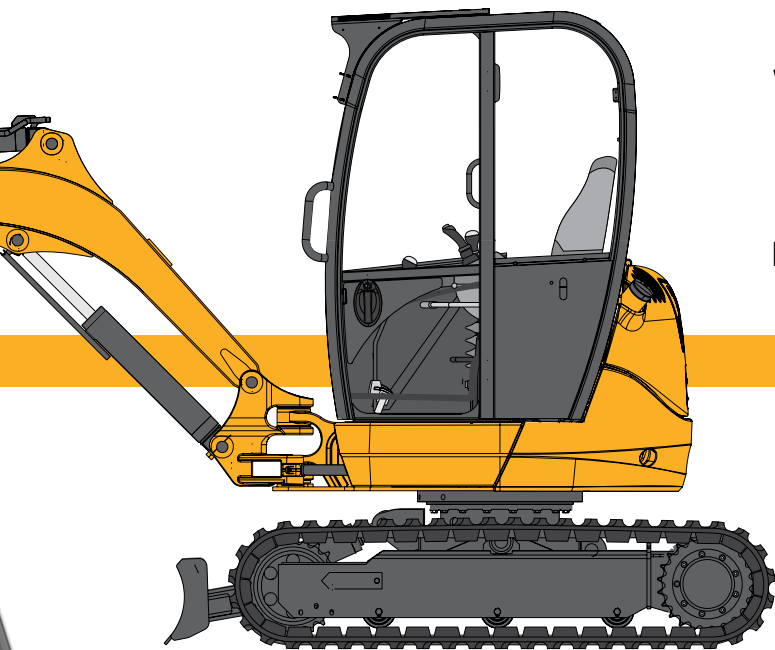
SUPERIOR INSTALLATION

- specialized equipment for installation of helical screw piles
- can adapt your current excavator
- no damage to landscape or structures
- ideal for restricted spaces
- any season operation
- removable and reusable system

TERRITORY EXCLUSIVITY

75,000 to 90,000 potential customers per region





**10X
MORE
PROFITABLE***

Profit from a GoliathTech
screw pile-adapted
machine: \$600/h

Average profit from
an excavator: \$60/h

Already own an excavator?
You can significantly increase the value it
provides to your business by adapting it with
GoliathTech's rotary hydraulic attachment.

THE GOLIATHTECH VALUE-ADD

Adapting your existing machinery to enable GoliathTech helical screw pile installation is a smart business decision that will enhance your profitability.

Because our screw piles are installed so easily, quickly and economically — with no excavation required and minimal site disruption — your machine is freed up quickly for use on other tasks. That's time & money in your pocket.

GOLIATHTECH TECHNICAL SPECIFICATIONS

Helix pile assembly

Pile size from 1 $\frac{7}{8}$ " to 12 $\frac{3}{4}$ "

Helix size from 9" to 31"

*based on 10 screw piles installed hourly

STRONGER. SECURE.

1

1 STEEL + ZN

Superior quality galvanized steel, worthy of the most ambitious projects. Our galvanizing process protects steel against corrosion to guarantee maximum longevity. No matter where they are installed, GoliathTech piles remain in perfect condition for a very long time. It's guaranteed!

polyurethane

Galvanized
60ksi Steel

3

2 GOLIATH CONNECT

This joint system allows a pile to be extended by joining two tubes using a locking bolt. Contrary to the competition's solution, this innovation strengthens long piles and eliminates all risk of movement.

3 DOUBLE PROTECTION

Our 60Ksi steel piles are fully galvanized to protect the tubes as well as the heads and helixes against physical deterioration. Furthermore, the tubes are filled with polyurethane to prevent ice accumulation inside the pile." This double protection fights frost and thaw soil movement on all fronts. Inside-out.

certified

non-certified

4 SUPERIOR ANCHORING

GoliathTech pile heads are equipped with a nut-fastening system. This exclusive anchoring solution allows the structure to be installed directly on the piles. The innovative anchoring prevents all lateral or vertical movement.

4

BECOME A CERTIFIED INSTALLER

It's an exciting opportunity in a buzzing new sector. Become the premier screw pile specialist in your region with GoliathTech, and your expertise will break new ground to business profitability.



Website with franchisee localization supported by GeoTargeted AdWords campaigns



Professional Business Card + Door Hanger



Vehicle Branding to Generate Leads

Why choose GoliathTech?

Very few other franchise opportunities today give you the tools and resources to quickly build a sustainable venture. One that fits your business perfectly and offers a unique, profitable product.

FRANCHISEE INVESTMENT

Franchise cost	\$49,500*
Mandatory Starting kit	\$11,100 to \$15,000
Royalty Fee	There is no Royalty Fee
Marketing Fee	6% of the Purchases
Local Marketing	3% of Gross Revenue

VARIABLE COSTS**

Travel & Expenses While Attending Initial Training

Training includes: 8 hrs. of Sales Training and 16 hrs. of Product & Installation Training; location: Magog, Quebec. An additional 8 hrs. on-the-job training is required for certification.

Equipment & Product Inventory

Equipment needed: trailer, excavator, vehicle and miscellaneous tools.

Vehicle

Must be black or white pickup truck or cube van, and no older than 5 years.

Computer & Software

Advertising (3 months) and Grand Opening

Professional Fees

Miscellaneous Opening Costs

Additional Funds (3 months)

SIMPLY SUPERIOR

SUPERIOR TECHNOLOGY

- Better anchoring mechanism = less movement
- Easier, quicker installation
- Highest quality product for residential applications
- Perfectly level structures due to precision engineering

SUPERIOR INSTALLATION

- No excavation, no heavy equipment, no damage
- Compact and powerful
- Reduced build time
- Protects existing structures
- Reaches narrow spaces

SUPERIOR FRANCHISEE BENEFITS

- Increased profitability
- Marketing materials support
- Lead-generation strategies
- Business development tools
- Training and assistance

*Expansion Fee is 75% of current Initial Fee; Renewal is 25% of current Initial Fee.

**Costs vary and depend on whether the franchisee has an existing, compatible business (e.g. landscaping or construction company) with the required base equipment and vehicle.

« Unsurpassed innovation in helical piling and expert installation form the core of GoliathTech`s strength. Our franchisees are carefully selected ambassadors of our brand, who share our commitment to engineering excellence, professionalism and the highest quality standards. They have access to leading-edge technology with a level of performance, strength and ease of installation that far exceeds outdated screw pile solutions available today. As your business partner we are fully committed to your success, and will make available a wealth of resources to help make your GoliathTech franchise a profitable venture. »

JULIAN REUSING
CEO



GoliathTech is ISO 9001:2008, ISO 14001:2015, CWB, AWB and CCMC certified.

WWW.GOLIATHTECHPILES.COM
TOLL FREE: 1.855.743.4777
FRANCHISE@GOLIATHTECHPILES.COM