

THE NEW LOOK OF TILE



CORTONA™
60" x 36" x 78"

JETCOAT® SHOWER WALL SYSTEM

Say goodbye to mortar, messy grout cleaning, and time-consuming tiling for your bath and shower.

Jetcoat® Shower Wall System gives you the look of real, contemporary tile patterns without the maintenance of traditional grout.

It only takes a few hours to measure, cut, and adhere to the wall, which makes this a perfect DIY project for most. Just 24 hours later, the walls will be cured and ready for use.

Complete your dream bath with a large selection of Craft + Main™ shower bases, shower doors and accessories.

You'll never find an easier or more affordable way to give your bath the stylish and dramatic makeover you've been dreaming of.

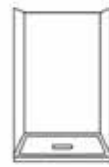
Do it yourself in **ONE DAY!**

EASY AS 1, 2, 3!

- STEP 1:** Measure wall panels and cut to fit.
- STEP 2:** Apply construction tape & adhesive.
- STEP 3:** Adhere to walls.

Choose your **SHOWER TYPE**

Whether you have a standard alcove shower, bathtub or something more custom, Jetcoat® Shower Wall System can be cut to fit.



SHOWER



BATH/SHOWER



NEO-ANGLE



SLATE
48" x 34" x 78"



DRIFTWOOD
42" x 42" x 78"



CARRARA WHITE
60" x 32" x 78"



POLISHED GREY MARBLE
60" x 36" x 78"

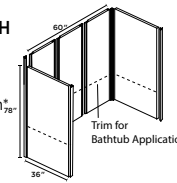
Choose your **SHOWER WALL SIZE**

Available in four sizes and configurations:

60" W x 36" D x 78" H

INCLUDES:
5 Wall Panels
2 Optional Edge Trim*
2 Optional Corner Trim*

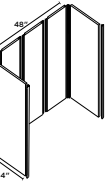
* Not included with Cortona or Tulipa



Trim for Bathtub Application

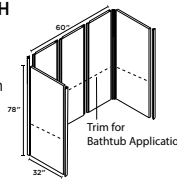
48" W x 34" D x 78" H

INCLUDES:
5 Wall Panels
2 Optional Edge Trim*
2 Optional Corner Trim*



60" W x 32" D x 78" H

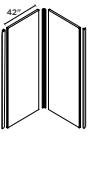
INCLUDES:
5 Wall Panels
2 Optional Edge Trim
2 Optional Corner Trim



Trim for Bathtub Application

42" W x 42" D x 78" H

INCLUDES:
2 Wall Panels
2 Optional Edge Trim
1 Optional Corner Trim



Choose your **wall finish** in your size

Long lasting textures that enhance the look of any shower with sophisticated style.

| FINISH | WALL PANEL SIZE | | | |
|---|--------------------|--------------------|--------------------|--------------------|
| | 60"W x 36"D x 78"H | 60"W x 32"D x 78"H | 48"W x 34"D x 78"H | 42"W x 42"D x 78"H |
| SLATE | | ○ | ○ | ○ |
| QUARRY | | ○ | ○ | ○ |
| SHALE | | ○ | ○ | ○ |
| DRIFTWOOD | | ○ | ○ | ○ |
| CARRARA WHITE | | ○ | ○ | ○ |
| WHITE SUBWAY | | ○ | ○ | |
| POLISHED GREY MARBLE | ○ | | | |
| VERTICAL WHITE SUBWAY | ○ | | | |
| CORTONA™ * Encaustic tile-look back wall with Vertical White Subway side walls | ○ | | | |
| TULIPA™ * Encaustic tile-look back wall with Vertical White Subway side walls | ○ | | | |

Add function to your shower

GLASS SHELF

Glass Shower Shelves are a versatile way to bring some elegance and function to your shower. Choose from two designs and stack more than one shelf to create a unique display in your shower. Match your bathroom finishes with wall mounting brackets available in three finishes to complete your shower design.

- Available in two designs - Corner and Rectangle
- Sturdy 3/8" tempered glass for additional shower storage
- Beveled edge
- 2 Brass wall mounting brackets available in Silver, Brushed Nickel and Matte Black finish
- 4 Screws included to install brackets on wall or surface
- Easy installation
- Can be installed over existing tile or JETCOAT® Shower Walls

FINISHES



Silver

Brushed Nickel

Matte Black



GLASS CORNER SHELF

10"W x 10"D x 3/8"H



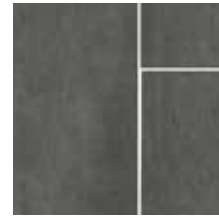
GLASS RECTANGLE SHELF

15"W x 5"D x 3/8"H

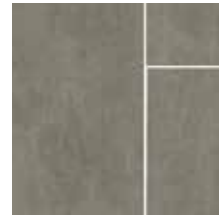


FINISH Options

JETCOAT®
SHOWER WALL SYSTEM



SLATE



QUARRY



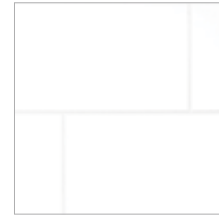
SHALE



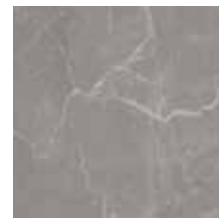
DRIFTWOOD



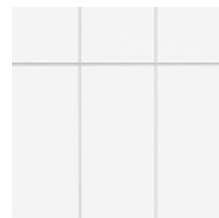
CARRARA WHITE



WHITE SUBWAY



POLISHED GREY MARBLE



VERTICAL WHITE SUBWAY



CORTONA™



TULIPA™

The JETCOAT® Advantage

- Waterproof & high resistance to impact and chemicals
- Can be installed over waterproof backer board or even tile
- A Grout-Free Solution, allowing you to have the look of tile without the messy grout cleaning
- Offered in four sizes and configurations; from an alcove surround to a corner shower
- Walls can be cut to fit around either a shower or bathtub configuration
- Angling Locking System is constructed with tongue and groove panels that easily lock together forming a waterproof and stress-free installation
- Side panels are designed with a beveled edge, which provides a clean finish to the outer edge
- 10-Year Residential Warranty and 2-Year Commercial Warranty

Made of MULTIPLE LAYERS

Each waterproof panel is layered with a top clear coat that has multiple protective UV layers for wear and stain resistance. It is constructed of SPC Rigid Core board, a composite of natural marble powder and PVC powder, which provides durability while being environmentally friendly. Our Grout-Free Solution provides you with the look of tile, without the mess of installing or the cleaning of traditional tile.



ANGLING LOCKING SYSTEM

The Angling Locking System is a strong and robust mechanical locking system that prevents water from penetrating into the joints of the shower wall panels. The locking system is constructed of tongue and groove panels that easily lock together forming a waterproof and stress-free installation.



JETCOAT®
SHOWER WALL SYSTEM

CRAFT + MAIN™

www.craftandmain.com

CUSTOMER SERVICE: 1.888.620.3667
6241 NORTHWIND PARKWAY, HOBART, IN 46342

GFS-TRIFOLD / Feb 2023

© 2023 FGI Industries, Ltd. | CRAFT + MAIN™, JETCOAT®, Cortona™, Tulipa™ and logo design are trademarks of FGI Industries, Ltd.

CRAFT + MAIN™

www.craftandmain.com