



Stamping Parts

Material: C1020
Thickness: 2.0 (Ø6.0) mm
Dimensions: 78 x 25 mm
Finish: Nickel Plated



Stamping Parts

Material: AL6063
Thickness: 1.6 mm
Dimensions: 780 x 160 mm
Finish: Powder Coating



Stamping Parts

Material: 1010
Thickness: 3.0 mm
Dimensions: 120 x 75 mm
Finish: Zinc Plated



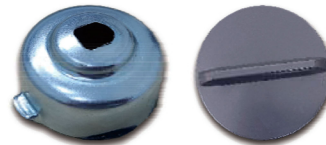
Stamping Parts

Material: SPCC
Thickness: 2.5 mm
Dimensions: 250 x 70 mm
Finish: Powder Coating



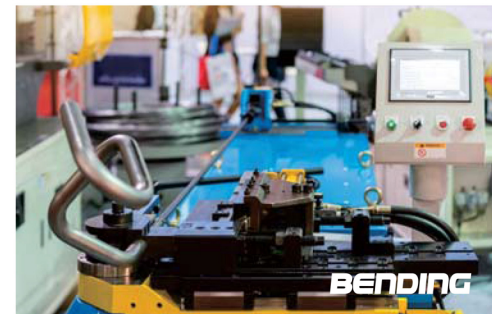
Stamping Parts

Material: SPCC / 1010
Thickness: 2.0 (Ø7.0) mm
Dimensions: 70 x 75 mm
Finish: Zinc Plated



Stamping Parts

Material: SPCC
Thickness: 0.8 mm
Dimensions: 95 x 20 mm
Finish: Powder Coating



Stamping Parts

Material: SPCC
Thickness: 2.0 mm
Dimensions: 120 x 30 mm
Finish: Zinc Plated



Stamping Parts

Material: SPCC
Thickness: 2.0 mm
Dimensions: 230 x 55 mm
Finish: Grinding, Chrome Plated



COMPANY INTRO

Chingmass Industrial Co., Ltd. established in 2004. Over 15 years' improving, Chingmass company already supplied tens of thousands' products to more than 30 countries.

Our company's main service items are : customized aluminum extrusion parts, stamping parts, tube bending and welding. Applicate in: Auto parts, building hardware, yacht hardware. Due to the Covid-19, the company also developed patented face shield for emergency user. (CE certificated and ANSI compliance)



Stamping Parts

Material: SUS304
Thickness: 0.5 mm
Dimensions: 800 x 20 mm
Finish: Liquid Coating



Stamping Parts

Material: S45C
Thickness: 4.5 mm
Dimensions: Ø40 mm
Finish: Zinc Plated



Enrich your life

CHINGMASS INDUSTRIAL CO., LTD

TEL: +886-6-5705888 FAX: +886-6-5705862

info@chingmass.com; keith@chingmass.com ; www.chingmass.com
No. 32-28, Madoukou, Madou Dist., Tainan 721013, Taiwan

dun & bradstreet
D-U-N-S® CERTIFIED





Aluminum Extrusion & Stamping Parts

Material: AL6063 / Thickness: 1.5 mm
Dimensions: 1680 x 120 mm
Finish: Grinding, Anodizing



WELDING

Aluminum Extrusion & Stamping Parts

Material: AL6063 / Thickness: 1.5 mm
Dimensions: 1680 x 130 mm
Finish: Grinding, Anodizing, Liquid Coating



STAMPING



GRINDING



Aluminum Extrusion & Stamping Parts

Material: AL6063 / Thickness: 1.5 mm
Dimensions: 780 x 105 mm
Finish: Grinding, Anodizing, Liquid Coating



BENDING

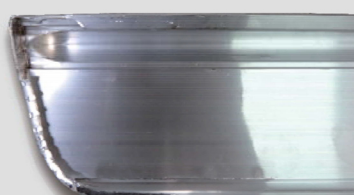


EXTRUSION



Aluminum Extrusion & Stamping Parts

Material: AL6063 / Thickness: 1.5 mm
Dimensions: 1680 x 120 mm
Finish: Grinding, Anodizing



COMPANY INTRO

Chingmass Industrial Co., Ltd. established in 2004. Over 15 years' improving, Chingmass company already supplied tens of thousands' products to more than 30 countries.

Our company's main service items are : customized aluminum extrusion parts, stamping parts, tube bending and welding. Applicate in: Auto parts, building hardware, yacht hardware. Due to the Covid-19, the company also developed patented face shield for emergency user. (CE certificated and ANSI compliance)

Aluminum Extrusion & Stamping Parts

Material: AL6063 / Thickness: 1.5 mm
Dimensions: 1680 x 80 mm
Finish: Grinding, Anodizing, Liquid Coating



Enrich your life

CHINGMASS INDUSTRIAL CO., LTD

TEL: +886-6-5705888 FAX: +886-6-5705862

info@chingmass.com; keith@chingmass.com ; www.chingmass.com
No. 32-28, Madoukou, Madou Dist., Tainan 721013, Taiwan

dun & bradstreet
D-U-N-S® CERTIFIED

