



EXTERIOR & INTERIOR  
ARCHITECTURAL PRODUCTS

Column Wraps!

Contact Us:



6" Classic Wall Panel & Column  
Wraps Golden Oak

# THE CHAMCLAD® WAY

---

We are a Canadian family-owned business where Customer Service and Quality always remain our top priority. We strive to rise above industry standards for durable solutions that our customers are proud to display on their projects. The integration of sustainability objectives throughout the production process and the use of responsibly sourced materials ensure ChamClad products will contribute to a positive impact on the environment.

ChamClad is transforming architectural design and construction practices throughout North America and beyond. Redefining industry norms, our diverse lineup of exterior and interior products set new standards with remarkably lifelike finishes and minimal maintenance needs. These finishes not only elevate visual appeal but also exhibit outstanding weathering performance, resilience against the elements, color retention, long-lasting durability, and impressive resistance to scratches and graffiti.



ChamClad products are crafted in Canada from engineered 100% recycled, rigid PVC. ChamClad is committed to providing sustainable solutions for projects that require high performance and minimal upkeep.



ChamClad products offer exceptional impact resistance, minimal heat buildup, resistance to water absorption, and are impervious to bacteria and mold. They require minimal maintenance with no need for caulking, staining, or painting. ChamClad high-performance panels offer increased defence against elements including fire, wind and hail, protecting your investment for many years to come.



6" Classic Wall Panel Canadian Pine

ENJOY THE BEAUTY OF REAL  
WOOD AND THE SUSTAINABILITY  
& LOW MAINTENANCE OF  
ENGINEERED RECYCLED  
RIGID PVC



6" Classic Wall Panel and Soffit Sunbleached Oak

# WOODGRAINS

S - STOCK  
NS - NON STOCK  
SO - SPECIAL ORDER



ATLANTIC WHITE  
-S



BEACHWOOD  
GREY-NS



TOFINO-NS



BARNBOARD  
GREY-S



CANADIAN  
PINE-S



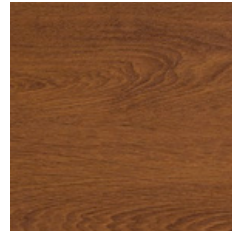
SUNBLEACHED  
OAK -S



CHAI CEDAR -S



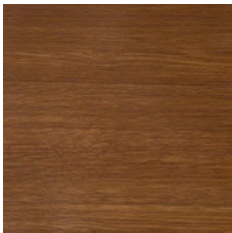
BARREL OAK -S



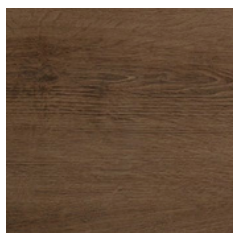
CINNAMON WALNUT -S



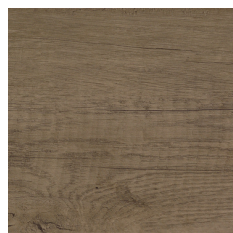
NATURAL OAK -SO



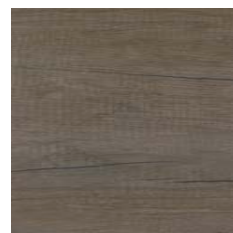
HARVEST WALNUT  
-NS



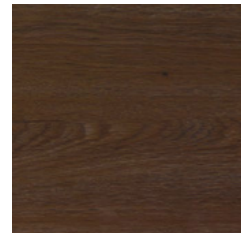
TOFFEE -S



MOUNTAIN OAK  
-SO



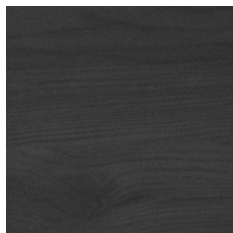
MONUMENT OAK  
-SO



MODERN WALNUT  
-NS



Blue River -S



CHARRED BLACK-S



SCAN ME TO VIEW ALL  
AVAILABLE FINISHES

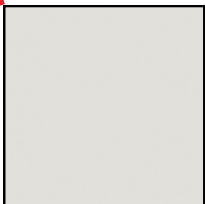
CONTACT YOUR LOCAL  
REPRESENTATIVE FOR  
STOCKED COLORS.

ACTUAL COLORS MAY  
VARY FROM PRINTED  
REPRESENTATION

PLEASE NOTE ANY OF  
THESE FINISHES MAY BE  
USED IN INTERIOR  
APPLICATIONS

# ULTRA MATTE SOLID FINISHES

**NEW**



CRYSTAL WHITE -S



PEBBLE BROOK -NS



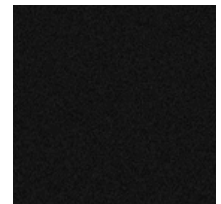
WARM AUTUMN -NS



SAND DOLLAR -NS



GREY ASPHALT -NS

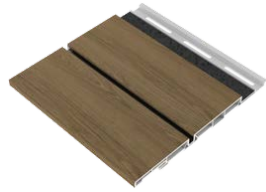


BLACK SAND -S

# EXTERIOR WALL CLADDING



**NEW**  
**6" REVEAL**  
**6" SHADOWLINE PANEL 1/2"**  
 12', 16', 20' LENGTHS



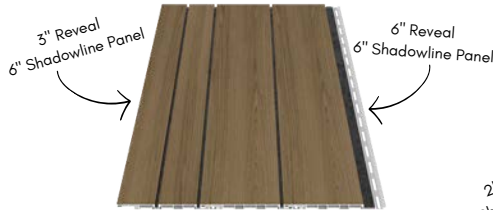
**NEW**  
**3" REVEAL**  
**6" SHADOWLINE PANEL 1/2"**  
 12', 16' & 20' LENGTHS



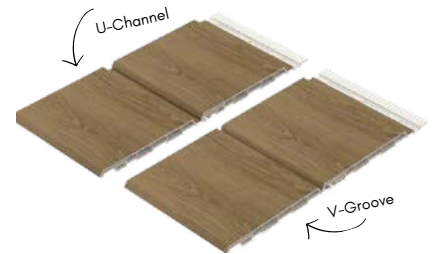
**NEW**  
**2" REVEAL**  
**12" SHADOWLINE PANEL 1/2"**  
 12' & 16' LENGTHS



**6" CLASSIC WALL**  
**PANEL 1/2"**  
 12', 16', 20', 30' LENGTHS



**SHADOWLINE SERIES MIX & MATCH!**



**CLASSIC PANEL**  
**1 PANEL, 2 LOOKS**

# EXTERIOR TRIMS



**UNIVERSAL 2PC OUTSIDE CORNER**  
 AVAILABLE IN 2" & 3.5" (ALL ALUMINUM  
 OR ALUM/ PVC HYBRID COMBINATIONS).  
 10', 20' LENGTHS



**1PC PVC INSIDE CORNER**  
 10', 20' LENGTHS



**2PC 2.75" H-TRIM**  
 ALL ALUMINUM  
 12', 20' LENGTHS



**UNIVERSAL 2PC J-TRIM**  
 AVAILABLE IN 2" & 3.5" (ALL ALUMINUM OR  
 ALUM/ PVC HYBRID COMBINATIONS).  
 12', 20' LENGTHS



**STARTER STRIP**  
 (ALUMINUM OR PVC)  
 12', 16', 20' LENGTHS

CONTACT YOUR LOCAL  
 REPRESENTATIVE FOR  
 STOCKED PANELS & LENGTHS.

# SOFFIT & INTERIOR WALL & CEILING



**6" SOLID SOFFIT  
PANEL 3/8"**  
12', 16', 20', 30' LENGTHS



**4" SOLID SOFFIT  
PANEL 3/8"**  
12', 20' LENGTHS



**6" VENTED SOFFIT 3/8"**  
12', 16', 20' LENGTHS  
**4" VENTED SOFFIT 3/8"**  
12', 20' LENGTHS

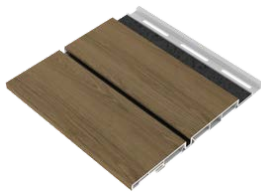


**6" FLEXIBLE INTERIOR WALL PANEL 3/8"**  
12', 16', 20' LENGTHS  
**4" FLEXIBLE INTERIOR WALL PANEL 3/8"**  
12', 20' LENGTHS

Perfect for Barrel Ceilings  
or Curved Walls



**NEW**  
**6" REVEAL  
6" SHADOWLINE PANEL 1/2"**  
12', 16', 20' LENGTHS



**NEW**  
**3" REVEAL  
6" SHADOWLINE PANEL 1/2"**  
12', 16' & 20' LENGTHS



**NEW**  
**2" REVEAL  
12" SHADOWLINE PANEL 1/2"**  
12' & 16' LENGTHS



**12" INTERIOR WALL & CEILING  
SEAMLESS PANEL 3/8"**  
12' & 20' LENGTHS

# PVC TRIMS



**2PC 1.5" PVC OUTSIDE  
CORNER TRIM**  
12' & 20' LENGTHS



**UNIVERSAL 1.5"  
J TRIM**  
12' & 20' LENGTHS



**INSIDE CORNER TRIM**  
10' & 20' LENGTHS



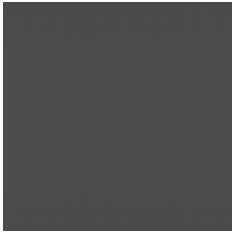
**2PC 2" H TRIM**  
12' & 20' LENGTHS



**2PC 1.5" J-TRIM**  
12' & 20' LENGTHS

CONTACT YOUR LOCAL  
REPRESENTATIVE FOR  
STOCKED PANEL & LENGTHS.

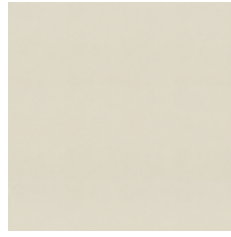
# INTERIOR ONLY FINISHES



BLACK LEATHER



CLASSIC OAK



ITALIAN LEATHER



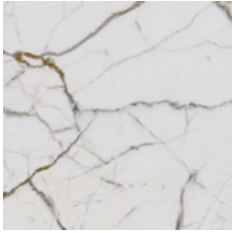
IVORY STONE



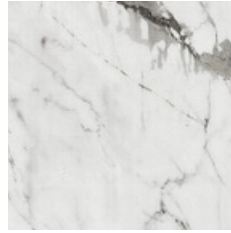
TERRA COTTA



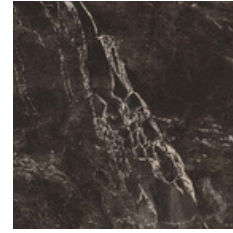
VEGAS STONE



TIFFANY'S



SORRENTO



BLACK PEARL

PLEASE NOTE ALL FINISHES MAY BE USED FOR INTERIOR APPLICATIONS, HOWEVER INTERIOR ONLY FINISHES MAY NOT BE USED ON EXTERIOR APPLICATIONS.

ACTUAL COLORS MAY VARY FROM PRINTED REPRESENTATION

CONTACT YOUR LOCAL SALES REPRESENTATIVE FOR INTERIOR FINISH AVAILABILITY





Faux Beam, 12" Shadowline Panel With 2" Reveal and 12" Seamless Interior Wall Panel

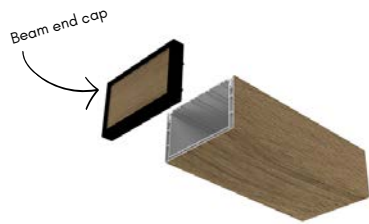
# 2PC FAUX BEAM



**NEW**  
**2PC BEAM 5.5 X 3.35"**  
 10', 16', 20' LENGTHS



**NEW**  
**5.5" BEAM BRACKET**



**COMING SUMMER 2024**  
**BEAM END CAP**

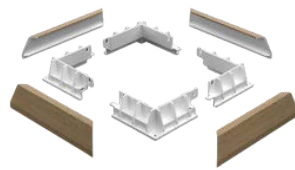
# 7" 2PC COLUMN WRAP



**NEW**  
**7" 2PC COLUMN WRAP**  
 10' LENGTHS



**NEW**  
**1"X4" CELLULAR PVC TRIM**  
 6.5', 13' LENGTHS

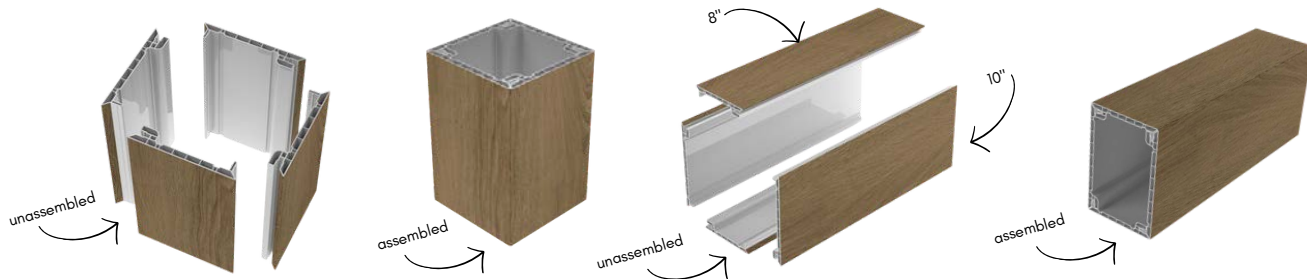


**NEW**  
**QUICK CLICK COLUMN CAP OR BASE TRIM**

CHAMCLAD PANELS AND TRIMS MAY ALSO BE USED IN COLUMN WRAP AND BEAM APPLICATIONS.

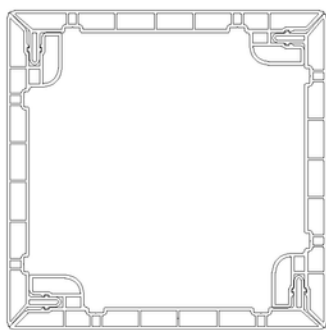


# QUICK CLICK COLUMN & BEAM SYSTEMS

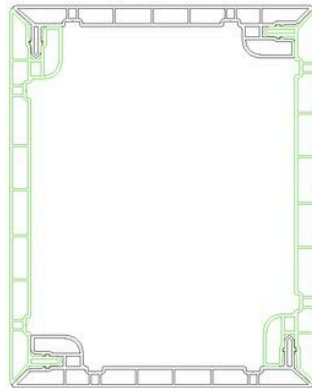


**COMING SUMMER 2024**  
**NEW QUICK CLICK COLUMN AND BEAM**  
 AVAILABLE IN ( 8", 10" & 12" FACE SIZES)

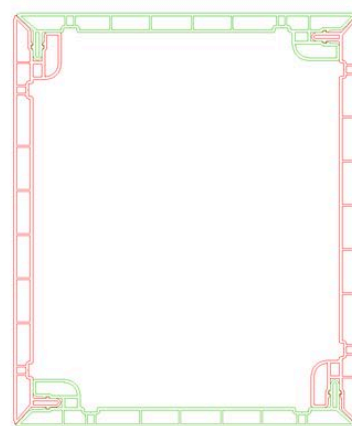
SOLD IN SETS OF 2 (2 SETS REQUIRED TO COMPLETE 1 COLUMN OR BEAM)



**8" X 8"**



**8" X 10"**



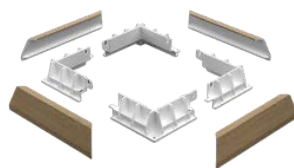
**10" X 12"**

**MIX & MATCH!**  
 BRING YOUR VISION TO LIFE  
 WITH OUR CHAMCLAD QUICK  
 CLICK COLUMN & BEAM  
 SYSTEM!

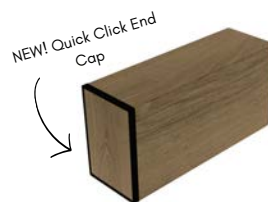
## ACCESSORIES



**NEW**  
**1"X4" CELLULAR PVC TRIM**  
 6.5', 13' LENGTHS



**NEW**  
**QUICK CLICK COLUMN CAP  
 OR BASE TRIM**



**COMING SUMMER 2024**  
**QUICK CLICK BEAM END CAP**

TOUCH UP YOUR END CAPS  
 SEAMLESSLY WITH A  
 CHAMCLAD SPRAY BOMB IN  
 THE FINISH OF YOUR CHOICE



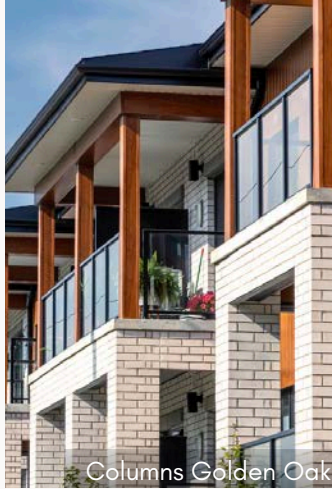
6" Classic Wall Panel Toffee



6" Shadowline Panel & 2pc Column Wraps Toffee



6" Classic Wall Panel & Soffit Panel  
Sunbleached Oak



Columns Golden Oak



# Residential



6" Classic Wall Panel Golden Oak



6" Classic Wall Panel Sunbleached Oak



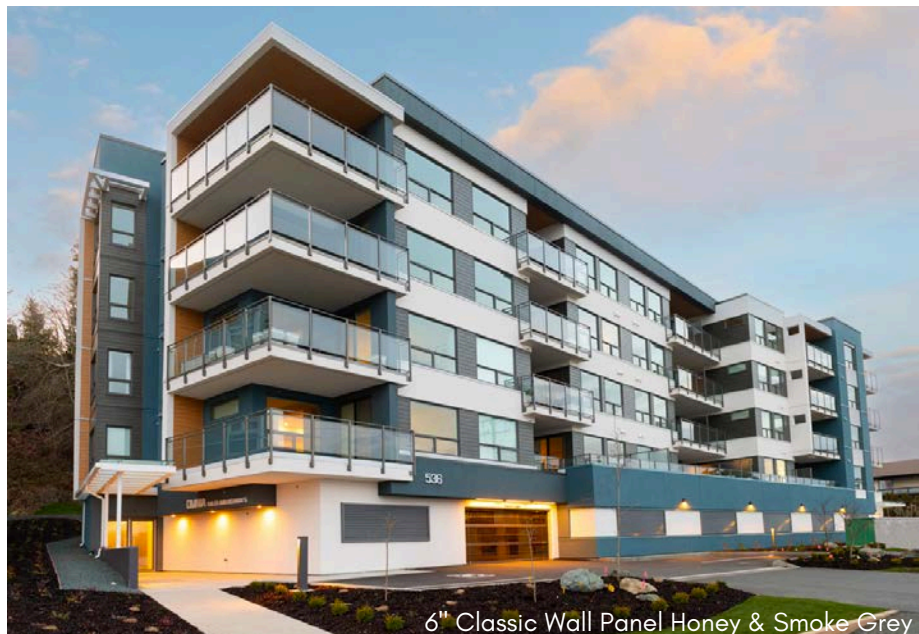
6" Classic Wall Panel & Ceiling Panel Barrel Oak



6" Classic Wall Panel Toffee



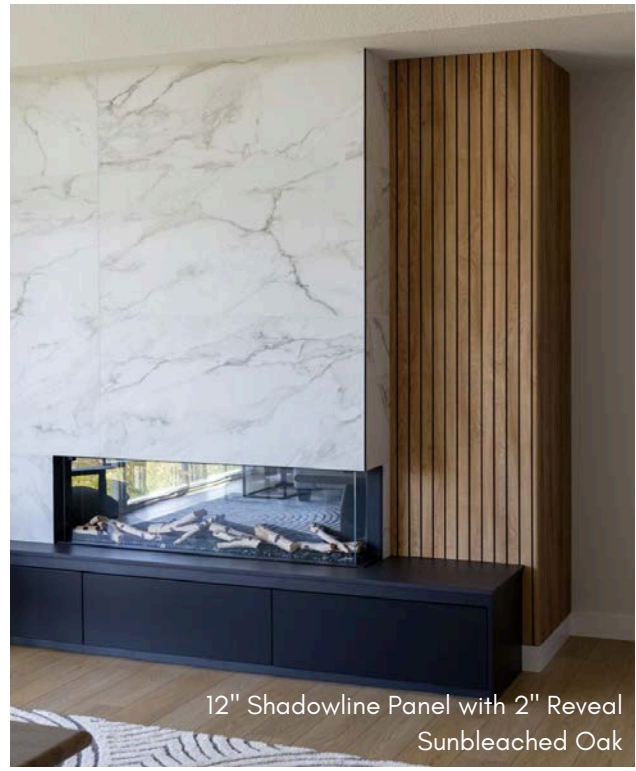
6" & 3" Shadowline Panel Charred Black



6" Classic Wall Panel Honey & Smoke Grey



6" Soffit Panel Mountain Oak



12" Shadowline Panel with 2" Reveal Sunbleached Oak



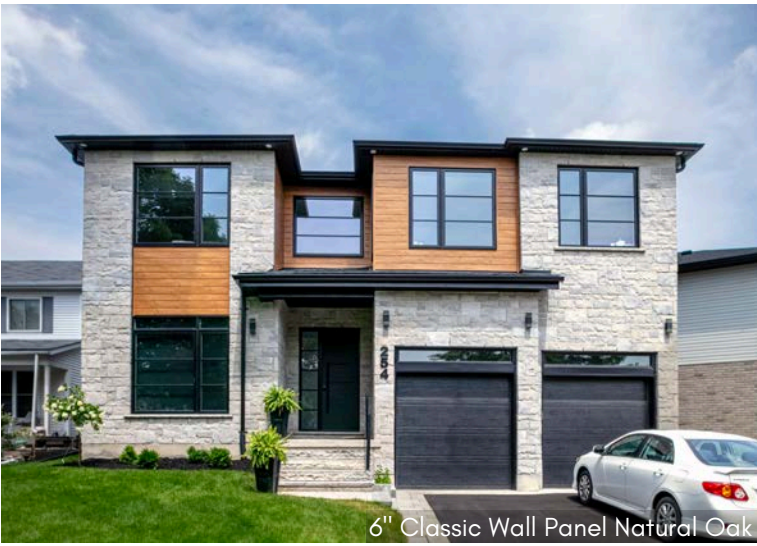
6" Soffit Panel Grey Oak



6" Interior Wall Panel Sunbleached Oak



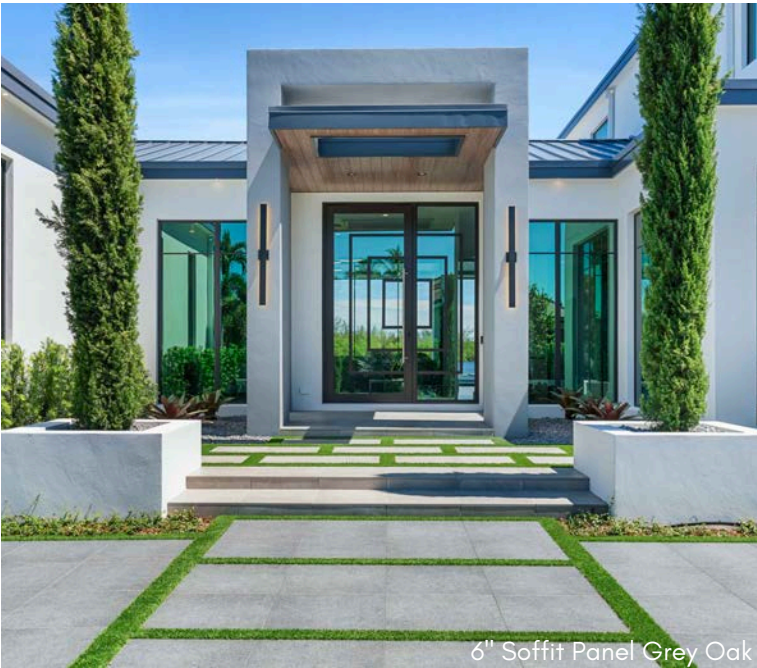
6" Classic Wall Panel Sunbleached Oak



6" Classic Wall Panel Natural Oak



6" Interior Wall Panel Black Wood



6" Soffit Panel Grey Oak



6" Soffit Panel Pure White



6" Soffit Panel Sunbleached Oak



6" Classic Wall Panel Natural Oak



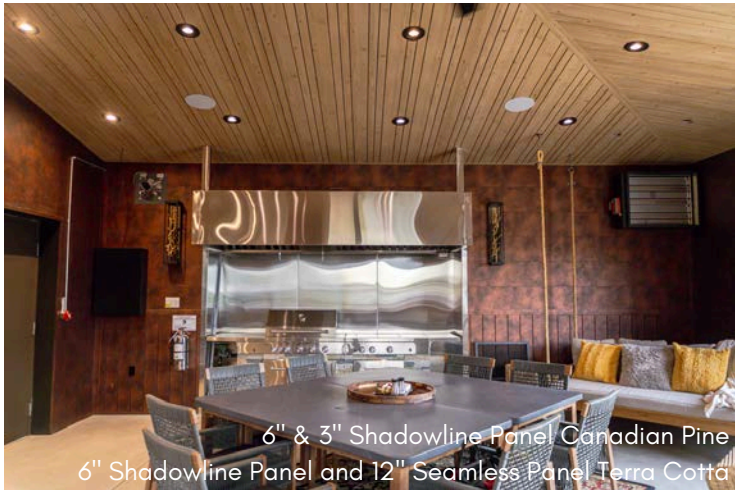
12" Panel Chai Cedar



Commercial



12" Seamless Panel Copper & Storm Grey



6" & 3" Shadowline Panel Canadian Pine  
6" Shadowline Panel and 12" Seamless Panel Terra Cotta



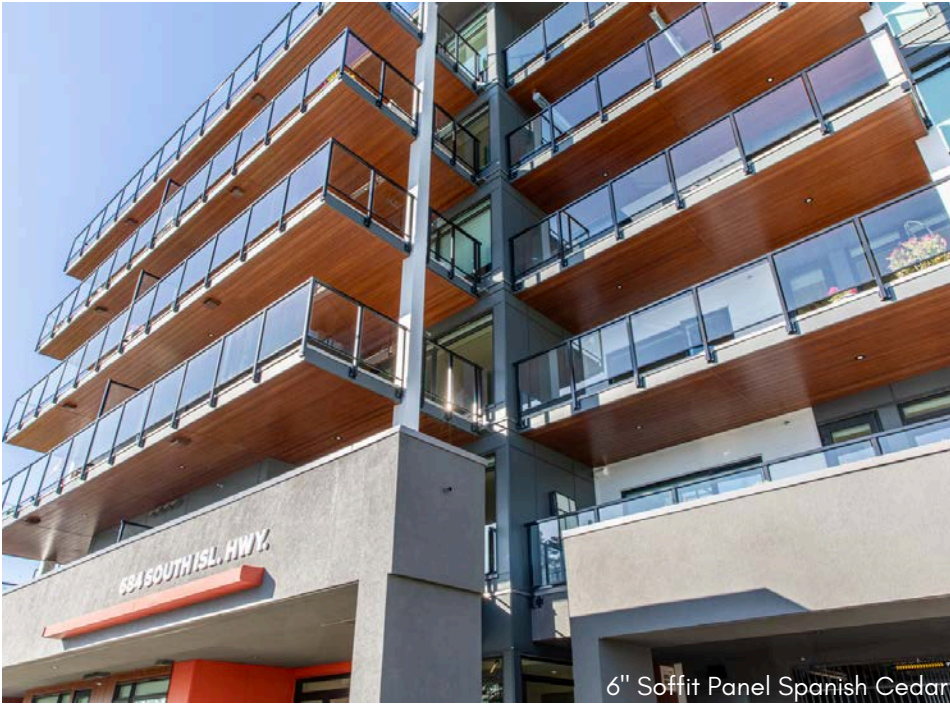
6" Classic Wall Panel Honey



6" Classic Wall Panel Cinnamon Walnut



6" Classic Wall Panel & Soffit Toffee



6" Soffit Panel Spanish Cedar



6" Interior Wall Panel Sunbleached Oak



6" Classic Wall Panel Natural Oak



6" Classic Wall Panel Spanish Cedar

# THE CHAMCLAD® ADVANTAGE

## TESTS

- ICCES ESR 4560
- CCMC 14323-R
- ASTM D696-16
- ASTM G154-16
- ASTM D790
- ASTM G155
- ASTM D638-22
- ASTM D1929-20
- ASTM E 119
- ASTM E330/-14
- PROCEDURE B Q50<0.85
- RILEM TC -127-MS (ACID RAIN)
- CAN/CGSB – 41.24.-95
- CAN/ULC S102-2018
- CAN/ULC S134
- NFPA 285
- NFPA 268
- TAS 202
- TAS 203
- FL45923
- MIAMI-DADE COUNTY, FLORIDA NOA NO. 23-1215.02
- WUI

- CLASS A FIRE RATED
- NFPA 285 AND CAN/ULC S134.
- MADE IN CANADA FROM 100% RECYCLED RIGID PVC
- 50 YEAR WARRANTY (15 YEAR NON-PRORATED)
- **CANADA AND U.S. STOCKING & DISTRIBUTION**
- IMPERVIOUS TO WATER ABSORPTION, BACTERIA AND MOLD LOW MAINTENANCE & HIGH IMPACT RESISTANCE CONTRIBUTES TO LEED CERTIFICATION
- SCRATCH AND CHEMICAL RESISTANT
- HEAT REFLECTIVE TECHNOLOGY
- EASY TO INSTALL, NO SPECIAL TOOLS REQUIRED, LIGHTWEIGHT
- SHORT LEAD TIMES



6" Soffit Panel Mountain Oak



6" Classic Wall Panel Mountain Pine, Natural Oak, Honey



6" Ceiling Panel Sunbleached Oak

JANUARY, 2024



NOA No. 23-1215.02



FL45923



10235 184 St NW  
Edmonton AB T5S 2J4  
780-454-4430

CHAMCLAD.COM