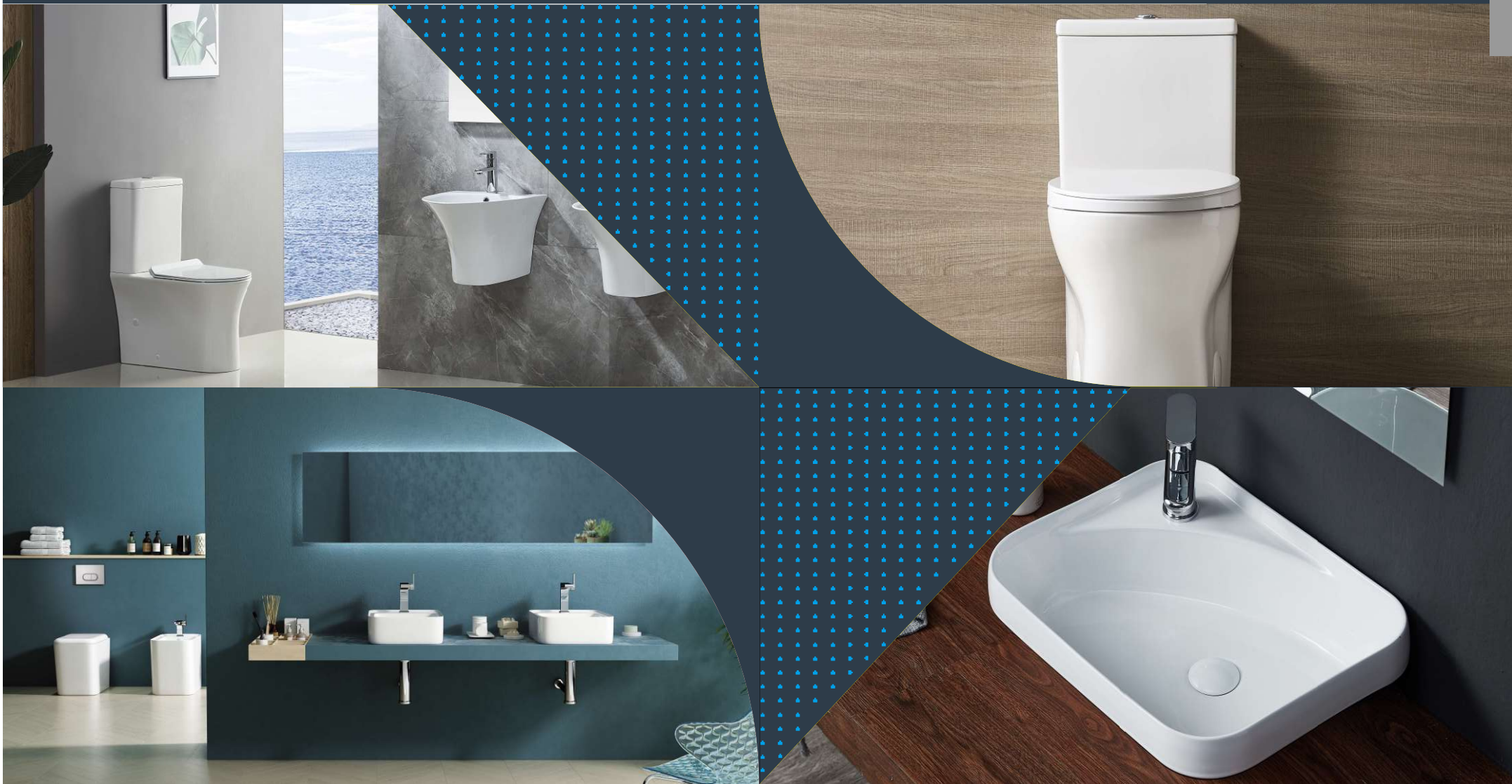




Corporate Profile 2023



CONTENTS

Overview	02
Organization Structure	03
Preliminary Achievement	04
Market Structure	05
Philosophy	06
Technics Characteristic	07
Factory General	08
Quality Inspection	09
Certification	12
Main Partners	14

OVERVIEW

Relying on local clay resource advantage and years' persistent operation in sanitary ware industry, Cleanman Sanitary Ware is committed to providing the highest level of customer service and a comprehensive product offering, endeavors to grow up into a leading sanitary ware manufacture with a global strategic vision and brand philosophy of diversification.

By offering a complete solution with its diversification into porcelain sanitary ware, Cleanman believes in creating value through responding rapidly to market demands, cost-efficient operations and consumer satisfaction. As a result, Cleanman wields a comprehensive product portfolio and vast production capacity to meet these demands. Cleanman's integrated research and manufacturing process helps to enrich lifestyles worldwide through a distinct range of innovative, yet affordable products. All these subsidiaries contribute to Cleanman brand by offering complete value-added service to clients.

Looking ahead, Cleanman persists with its guideline of “optimize function, user-friendly, and excellent quality” to achieve its goal of consistent growth that is characteristic of a world class business. In parallel with its plans for expansion, Cleanman is also deeply devoted to its role as a responsible corporate citizen of China and the world.

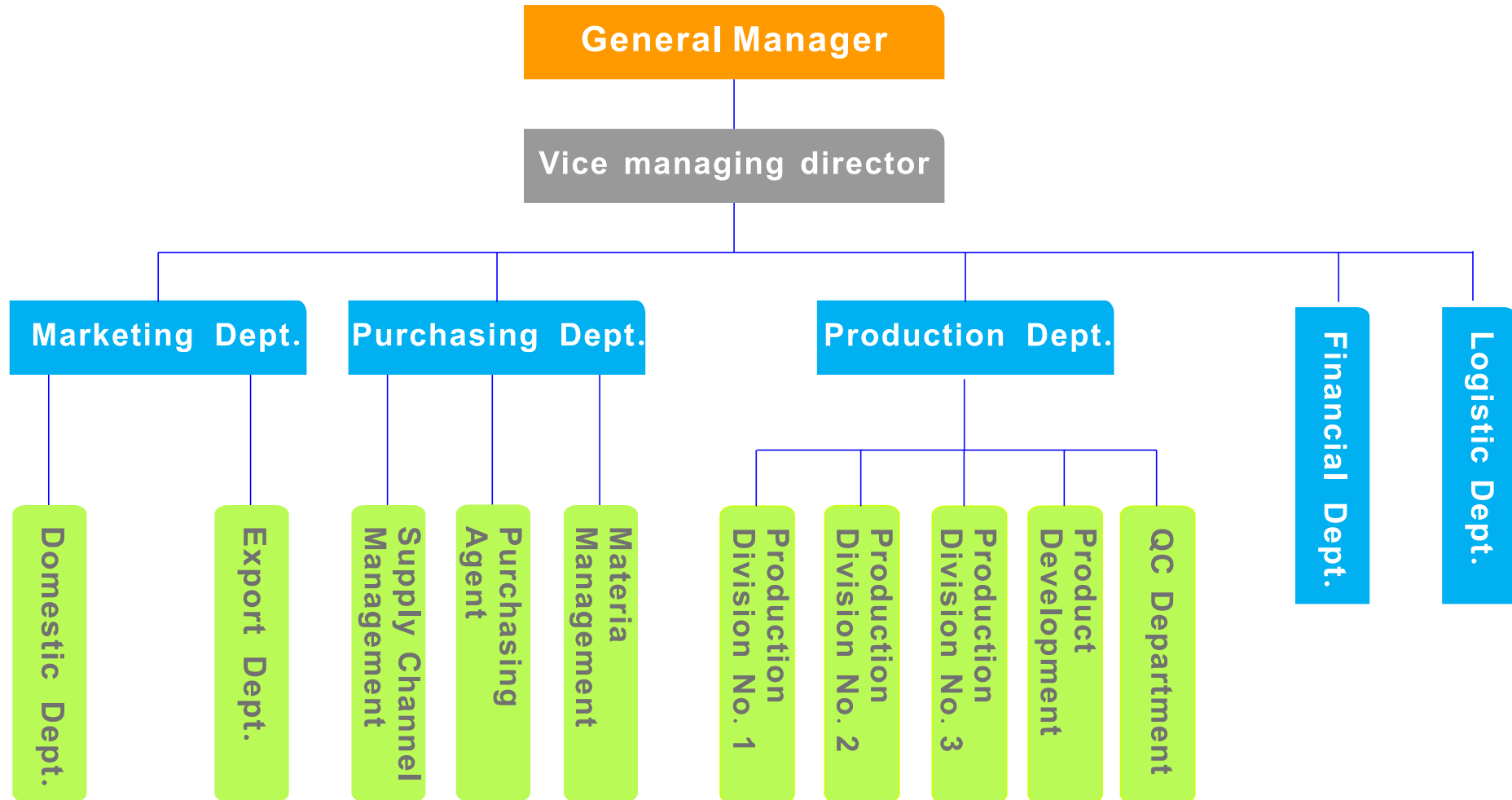


Cleanman Sanitary Ware-
Three-years' plan (under construction)



Cleanman Sanitary Ware-
Factory Inside

Organization Structure



Preliminary **ACHIEVEMENT**

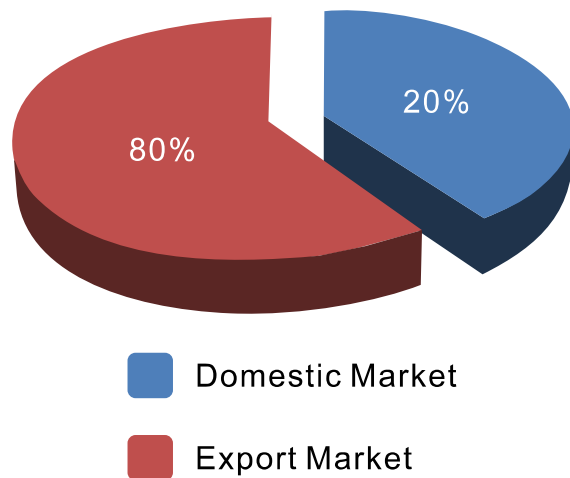


Market Structure

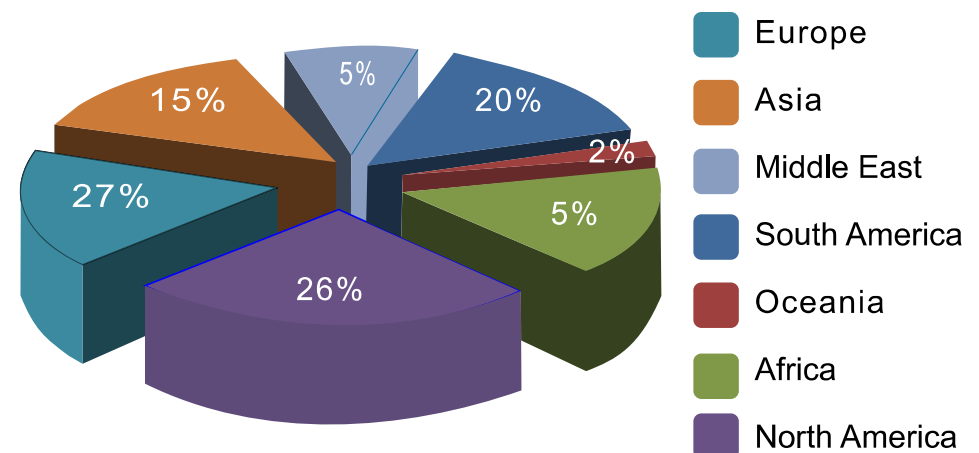
We believe that not only good quality but also excellent service is of great help to win the trust of our customers. With years' careful operating and system building, our sales and service net have covered more than 50 countries and districts, especially the North America, South America, Europe, Asia and Middle East area.



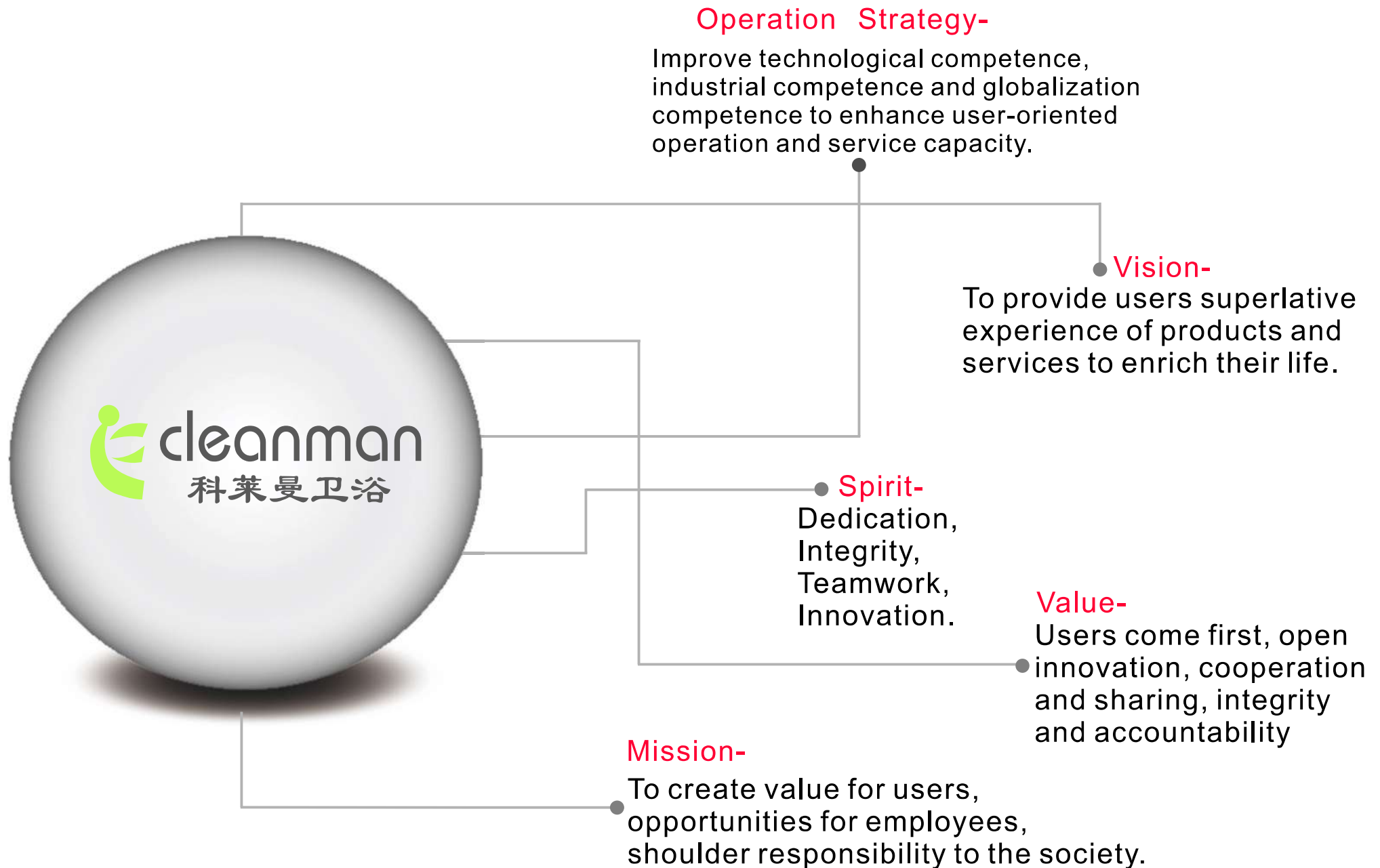
Percentage between domestic & export market:



Percentage to worldwide market:



Corporation PHILOSOPHY



Technics CHARACTERISTIC

360-degree Rotating Siphonic

Increasing pressure, flushing effects of the rapid clean



High quality mechanism

Max.4.8L as an alternative as well 3/6L dual flush to achieve a super water-saving



Integrated molding technics

Use integrated molds, no any trace between tank and pan, with perfect glaze and surface.



Optimization of pipe interior space

Special designed 'S' structure, optimize interior space to prevent dirt hidden in the pipes



Style designs

Based on human engineering, for smooth lines, latest styles, broad applicability



High quality seat cover

Toilet seat material PP with soft-closing hinges, UF as an alternative option.

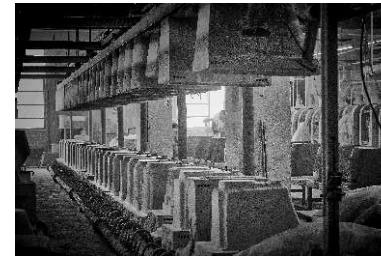
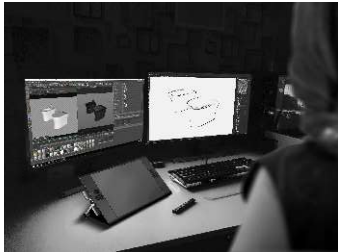


FACTORY GENERAL

STATE- OF- THE -ART plants at Chaozhou produce around 1 million pieces per annum.

The salient features of the plants are :

- LATEST TECHNOLOGY for production, including AUTO CASTING LINES for Toilet & Basin production .
- HIGHEST QUALITY RAW MATERIALS
- IN HOUSE QUALITY CONTROL AND TESTING
a laboratory of the highest standards
- Products conform to American, European Standards, as well as the testing standards of many other countries.
- DESIGNER FOR ITALIAN LATEST STYLE DESIGNS



- ◆ Location: Chaozhou, 100,000 sq.m.
- ◆ Employee: 350
- ◆ Turnover: 27million USD(2022)
- ◆ Production Capacity:
 - Toilet: 90, 000 PCS PER MONTH
 - Basin: 45, 000 PCS PER MONTH

Tunnel Kiln: 2 kilns x 100m

Shuttle Kiln: 4 kilns (mainly for basin & matt colors)

Quality INSPECTION

① IN-PROCESS INSPECTION

Prior to glazing and firing, inspection is necessary to ensure that the ware is well finished and free from cracks and pinholes. If passed, dry-fettled, de-dusted and sponged smooth.



② APPEARANCE & DEFORMATION INSPECTION

1. Appearance Inspection

Classify inspection according to the standard of appearance checking, with all-sides.

2. Deformation Inspection

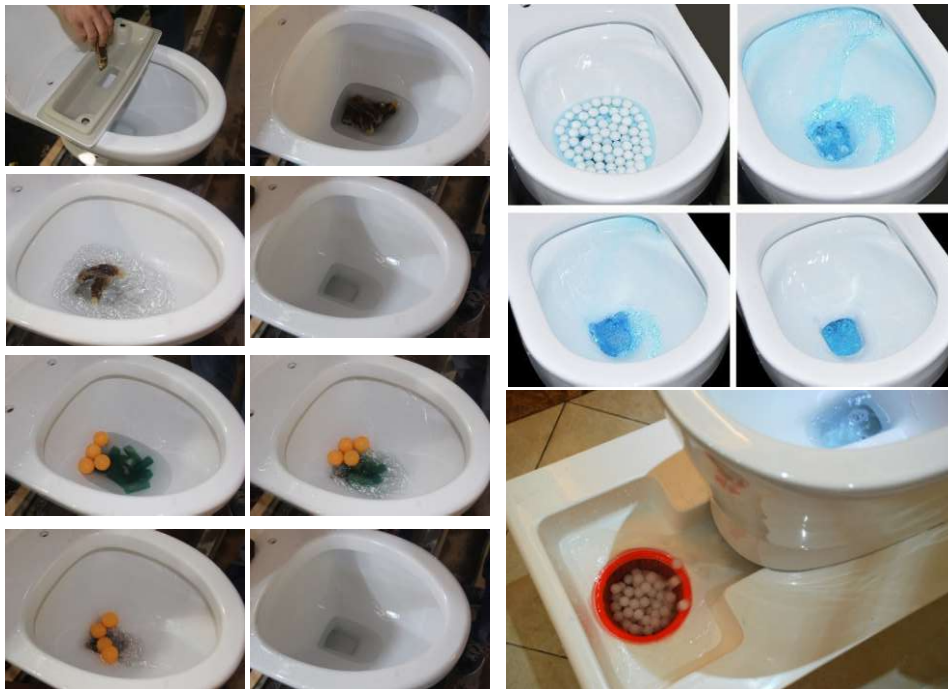
Inspecting by flatness, balance degree and levelness



③ FUNCTION INSPECTION

Flushing Function Inspection:

Inspection of passing object through toilet in standard unit time.



Seal area and seal depth Inspection:

To prevent dirt adhesion, to effectively prevent splashing of water, easy to clean; to prevent the odor distributed more capable.



③ FUNCTION INSPECTION

Leakage Inspection:

Under the unit stress, inspection the bottom of toilet and trap.

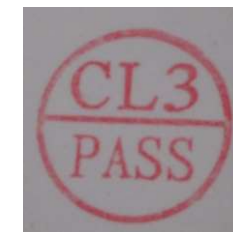


④ Packaging INSPECTION

New Products appraisal, including dimension, flush function, and packing,

Spot test for all products,

Classification products spot test(before entering into warehouse).



QC Stamp marked on the goods



Charm has come from the flawless quality.
Cleanman products have achieved the following certificates:



- * ISO 9001
- * CUPC
- * WaterSense
- * WaterMark
- * CE
- * CIDB
- * TISI
- * NOM
- * MAP



CHAOZHOU CLEANMAN TECHNOLOGY CO.,LTD.

GuWu Industrial Zone, Guxiang Town, Chaozhou City, 515647

P.R.CHINA

T: +86-768-6939 500 F: +86-768-6935 351

www.cleanman-cn.com

sales@cleanman-cn.com